

County Community Risk Profile (2018): Pierce

		Risk Ranking		Risk Category Rank		Contextual Indicators	
School District	Population: 10-17	ATOD Risk Percentile	Indicators with Data	Consumption (ATOD)	Consequence	Economic Deprivation	Troubled Family
Eatonville	1,385	76	21	High	Average	Average	Average
Clover Park	6,769	72	21	Average	High	High	High
Bethel	13,302	68	21	Average	High	Average	Average
Franklin Pierce	4,997	62	21	Average	Average	Very High	No Data
Puyallup	14,521	38	21	Average	Average	Average	Average
Fife	2,221	38	21	Average	Average	Average	Average
Sumner	5,496	37	21	Average	Average	Average	Average
Orting	1,698	25	21	Low	Average	Low	Average
Steilacoom Historical	2,118	24	21	Average	Average	Very Low	Low
Peninsula	6,855	15	21	Low	Low	Low	Low
White River	2,698	15	21	Low	Low	Low	Low
University Place	3,183	9	21	Low	Low	Average	Average

NOTES:

This risk profile reflects the risk levels of this county as of February 2018. School districts with no high schools are not included in this summary. Please note risk levels and risk rankings may change over time.

The ATOD consumption risk score is calculated from prevalence of alcohol, tobacco, and other drug use. The consequence risk score is calculated from school performance, youth delinquency, and mental health indicators. The overall risk ranking is not computed if either consumption or consequence score is missing.

A Risk Category Rank of "Very High" indicates the referenced School District Risk Score was in the top 10% of School Districts in the risk Category.

A Risk Category Rank of "High" indicates the referenced School District Risk Score was in the top 25% of School Districts in the risk Category.

A Risk Category Rank of "Average" indicates the referenced School District Risk Score was between 25% and 75% of School Districts in the risk Category.

A Risk Category Rank of "Low" indicates the referenced School District Risk Score was in the bottom 25% of School Districts in the risk Category.

A Risk Category Rank of "Very Low" indicates the referenced School District Risk Score was in the bottom 10% of School Districts in the risk Category.

Review Considerations

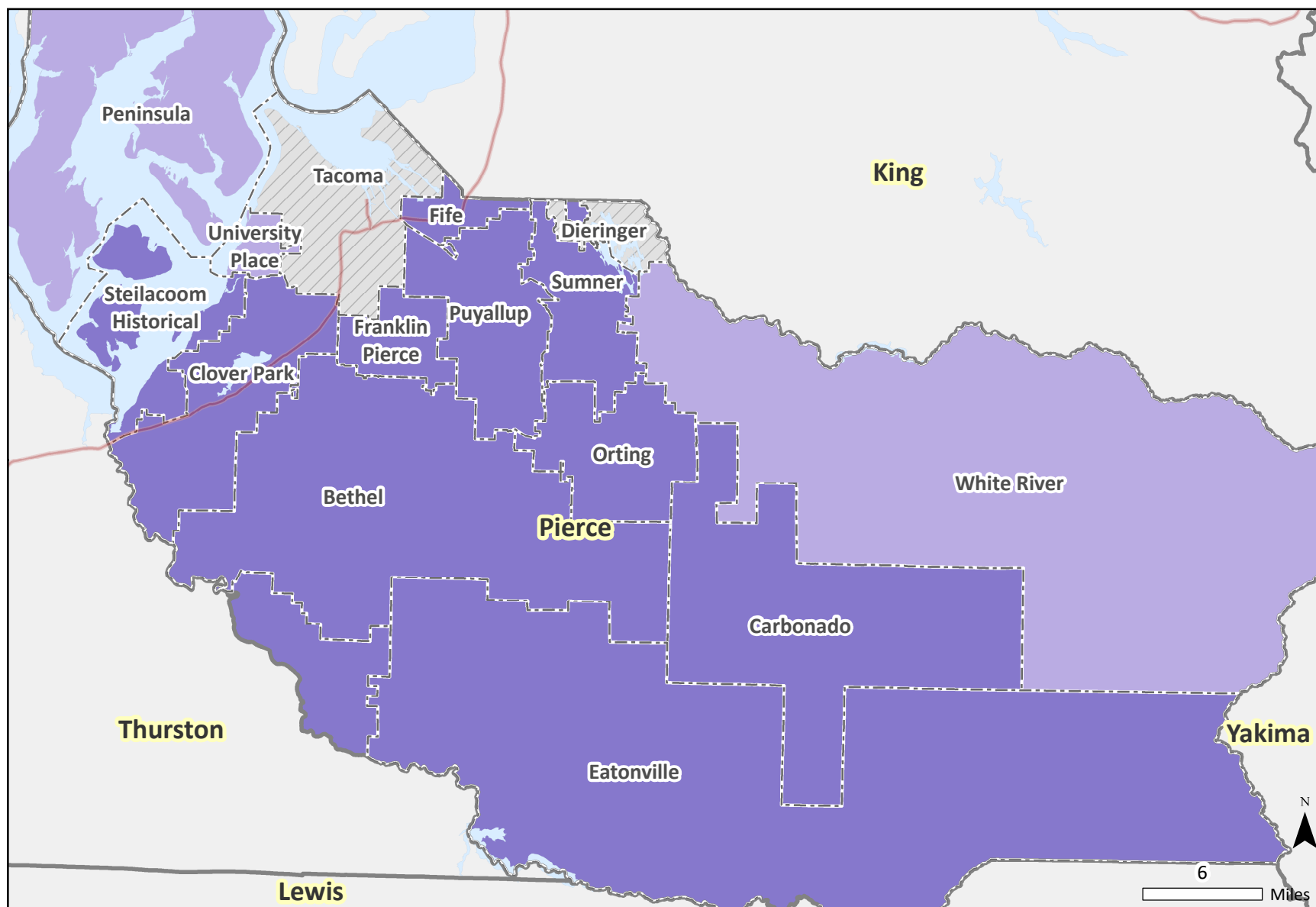
1) To get an overall sense of risk severity for both consumption and consequence, examine the "Risk Percentile". It reflects what % of School District had a Risk Score LOWER than the referenced School District.

2) To ensure that the risk score is meaningful, examine the "Indicators with data" column. Risk scores based on few indicators should be interpreted with caution. In total, 26 indicators were used.

3) To consider other contextual information, examine the "Population: Age 0-17", "economic deprivation" indicator, and the "troubled family" indicator. Note the "Population 0-17 year olds" value will be greater than district enrollment as it accounts for kids not in school as well as those in private schools.

Marijuana Composite Ranking

by School District, Pierce County, 2018



Composite Risk Ranking

- Very High 90 - 99
- High 75 - 89

Average 25 - 74

Low 10 - 24

No data

School Districts

Counties

Highways and Major Roads

Water Bodies

DATA NOTES: The percentile of the composite risk scores. The composite risk scores were calculated using standardized indicators in marijuana consumption and consequence. Cartography: Irina Sharkova.

SOURCE: DSHS Research and Data Analysis, Community Outcome and Risk Evaluation Information System (CORE).

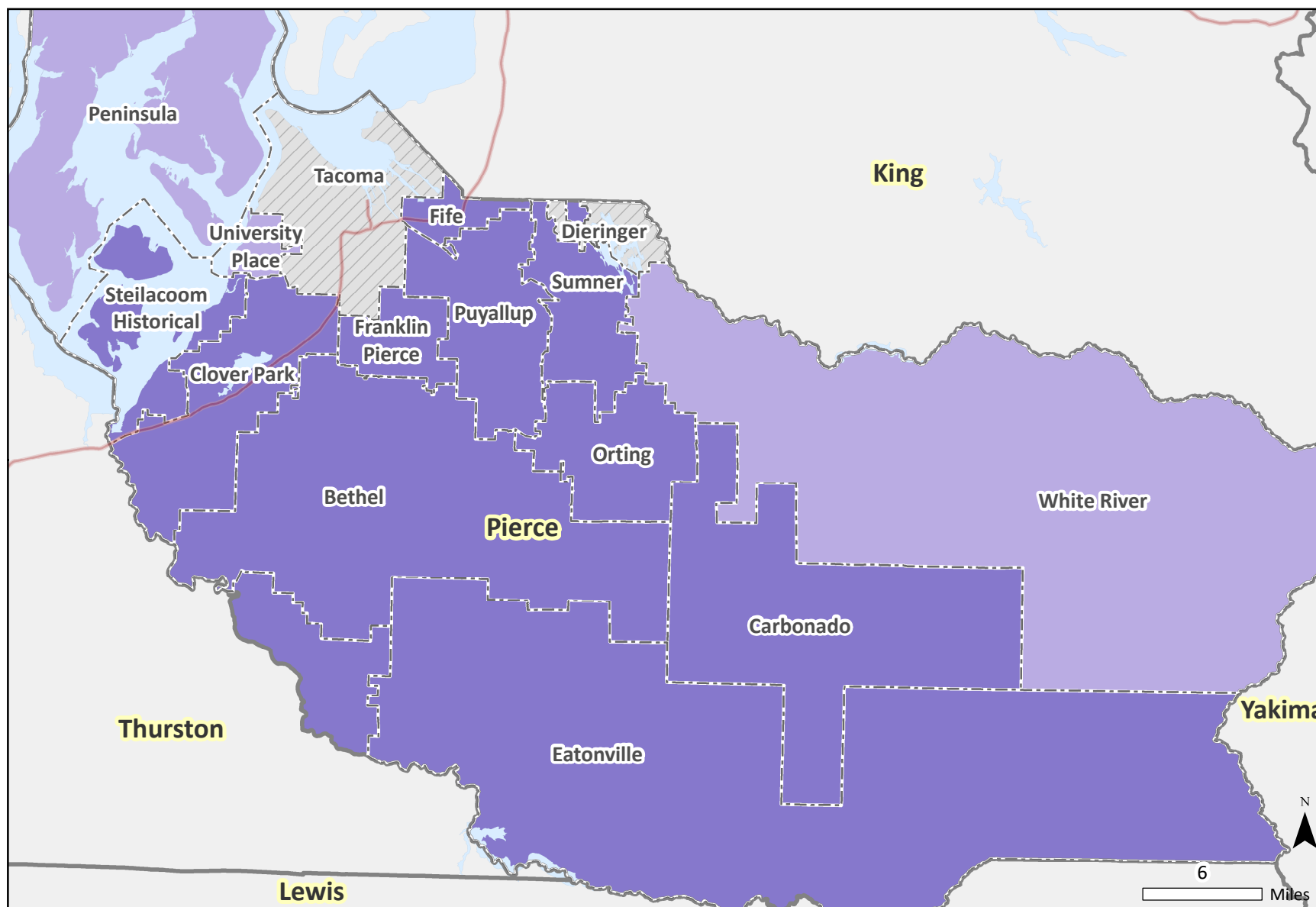


Transforming lives

March 20, 2018

Marijuana Consumption Ranking

by School District, Pierce County, 2018



Consumption Risk Ranking

Very High 90 - 99	Average 25 - 74	Very Low 1 - 9	School Districts	Highways and Major Roads
High 75 - 89	Low 10 - 24	No data	Counties	Water Bodies

DATA NOTES: The percentile of the consumption risk scores. The consumption risk scores were calculated using standardized indicators in marijuana consumption. Cartography: Irina Sharkova.

SOURCE: DSHS Research and Data Analysis, Community Outcome and Risk Evaluation Information System (CORE).

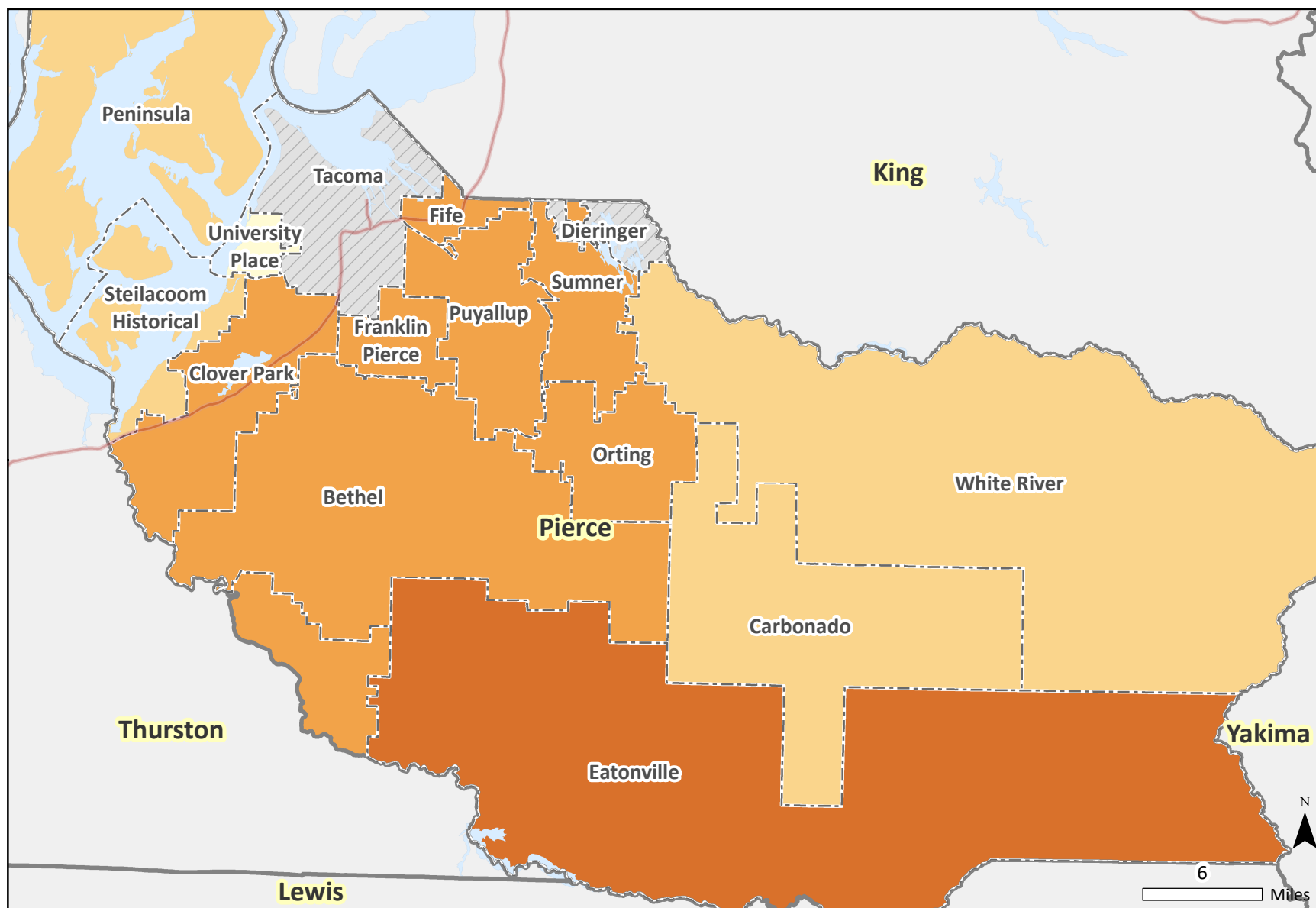


Transforming lives

March 20, 2018

Alcohol, Tobacco and Other Drugs Composite Ranking

by School District, Pierce County, 2018



Composite Risk Ranking

- Very High 90 - 99
- High 75 - 89

Average 25 - 74

Low 10 - 24

Very Low 1 - 9

No data

School Districts

Counties

Highways and Major Roads

Water Bodies

DATA NOTES: The percentile of the composite risk scores. The composite risk scores were calculated using standardized indicators in the alcohol, tobacco and other drugs (ATOD) consumption and consequence. Cartography: Irina Sharkova.

SOURCE: DSHS Research and Data Analysis, Community Outcome and Risk Evaluation Information System (CORE).

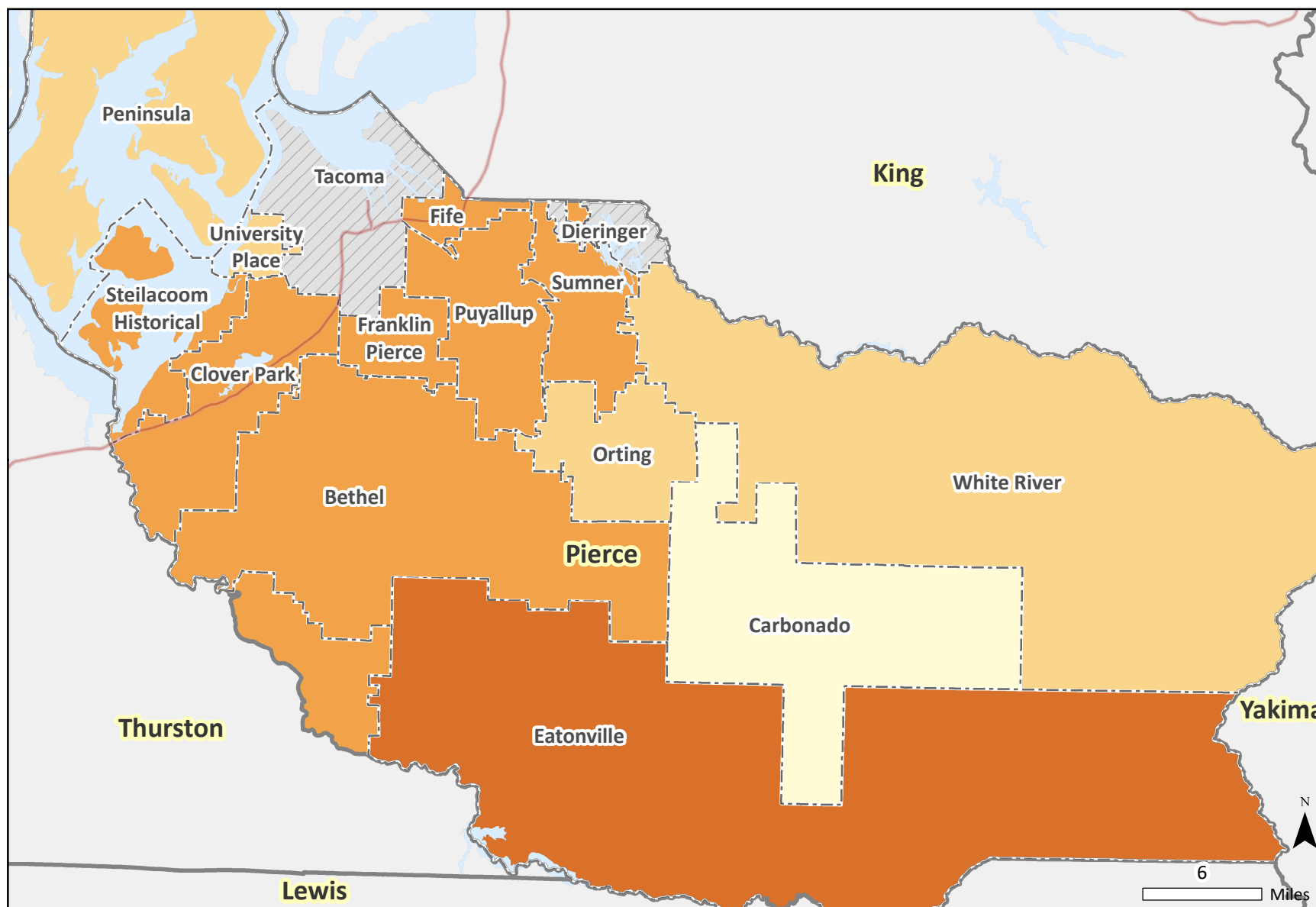


Transforming lives

March 20, 2018

Alcohol, Tobacco and Other Drugs Consumption Ranking

by School District, Pierce County, 2018



Consumption Risk Ranking

- Very High 90 - 99
- High 76 - 89

Average 25 - 75

Low 10 - 24

Very Low 1 - 9

No data

School Districts

Counties

Highways and Major Roads

Water Bodies

DATA NOTES: The percentile of the consumption risk scores. The consumption risk scores were calculated using standardized indicators in the alcohol, tobacco and other drugs (ATOD) consumption. Cartography: Irina Sharkova.

SOURCE: DSHS Research and Data Analysis, Community Outcome and Risk Evaluation Information System (CORE).

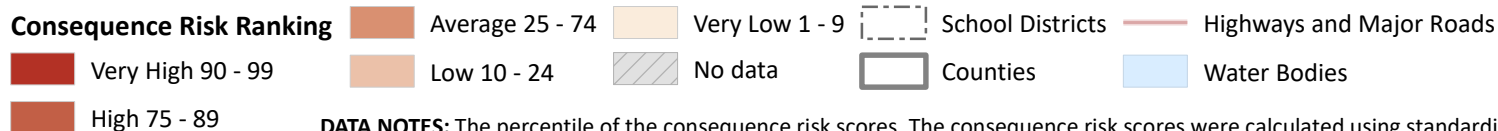
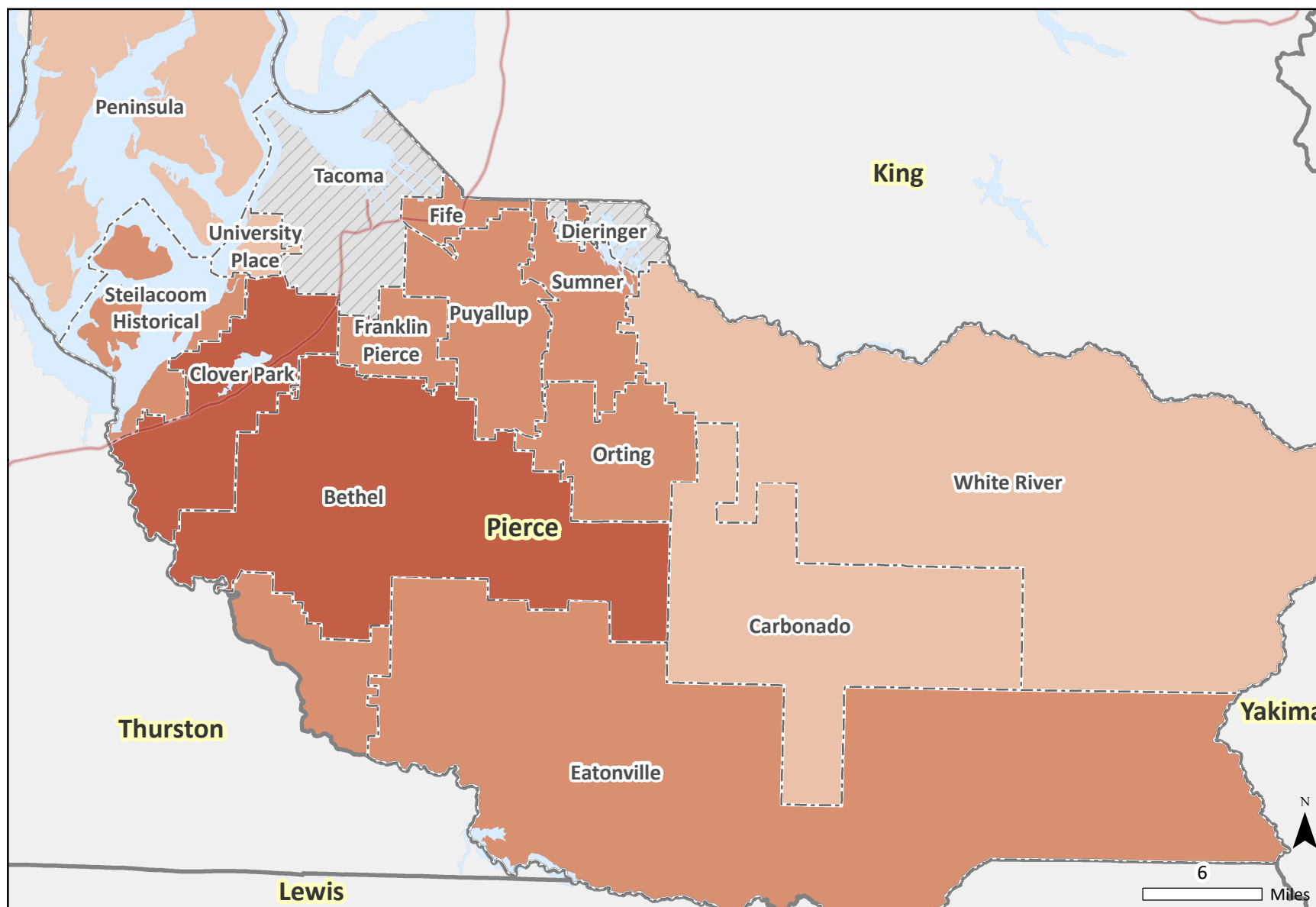


Transforming lives

March 20, 2018

Consequence Risk Ranking

by School District, Pierce County, 2018



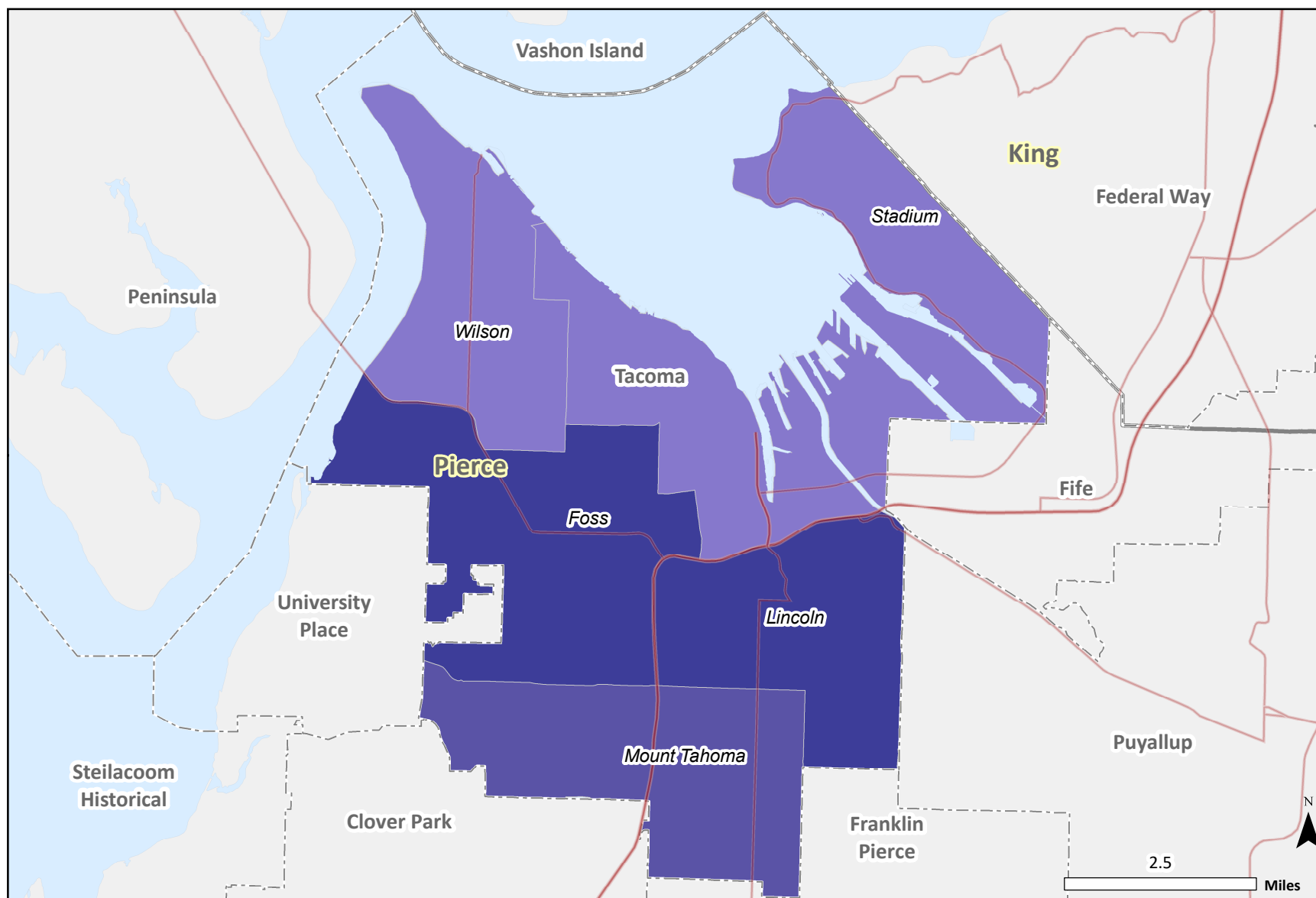
DATA NOTES: The percentile of the consequence risk scores. The consequence risk scores were calculated using standardized indicators in three sub-domains: school performance, youth delinquency, and mental health. Cartography: Irina Sharkova.
SOURCE: DSHS Research and Data Analysis, Community Outcome and Risk Evaluation Information System (CORE).

Risk Profile by High School Attendance Area (2018): Tacoma

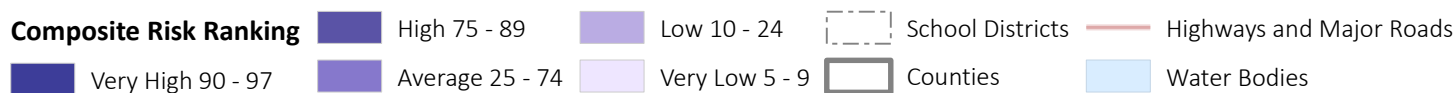
		Risk Ranking		Risk Category Rank		Contextual Indicators	
High School	Population: 10-17	ATOD Risk Percentile	Indicators with Data	Consumption (ATOD)	Consequence	Economic Deprivation	Troubled Family
Foss H.S.	4,159	97	13	High	Very High	Very High	High
Mount Tahoma H.S.	5,190	91	21	High	High	Very High	Very High
Lincoln H.S.	4,963	82	21	High	High	Very High	High
Wilson H.S.	2,440	71	21	Average	Average	Average	Average
Stadium H.S.	4,820	51	21	Average	Average	High	Very High

Marijuana Composite Ranking

by High School Attendance Area, Tacoma School District, 2018



Composite Risk Ranking

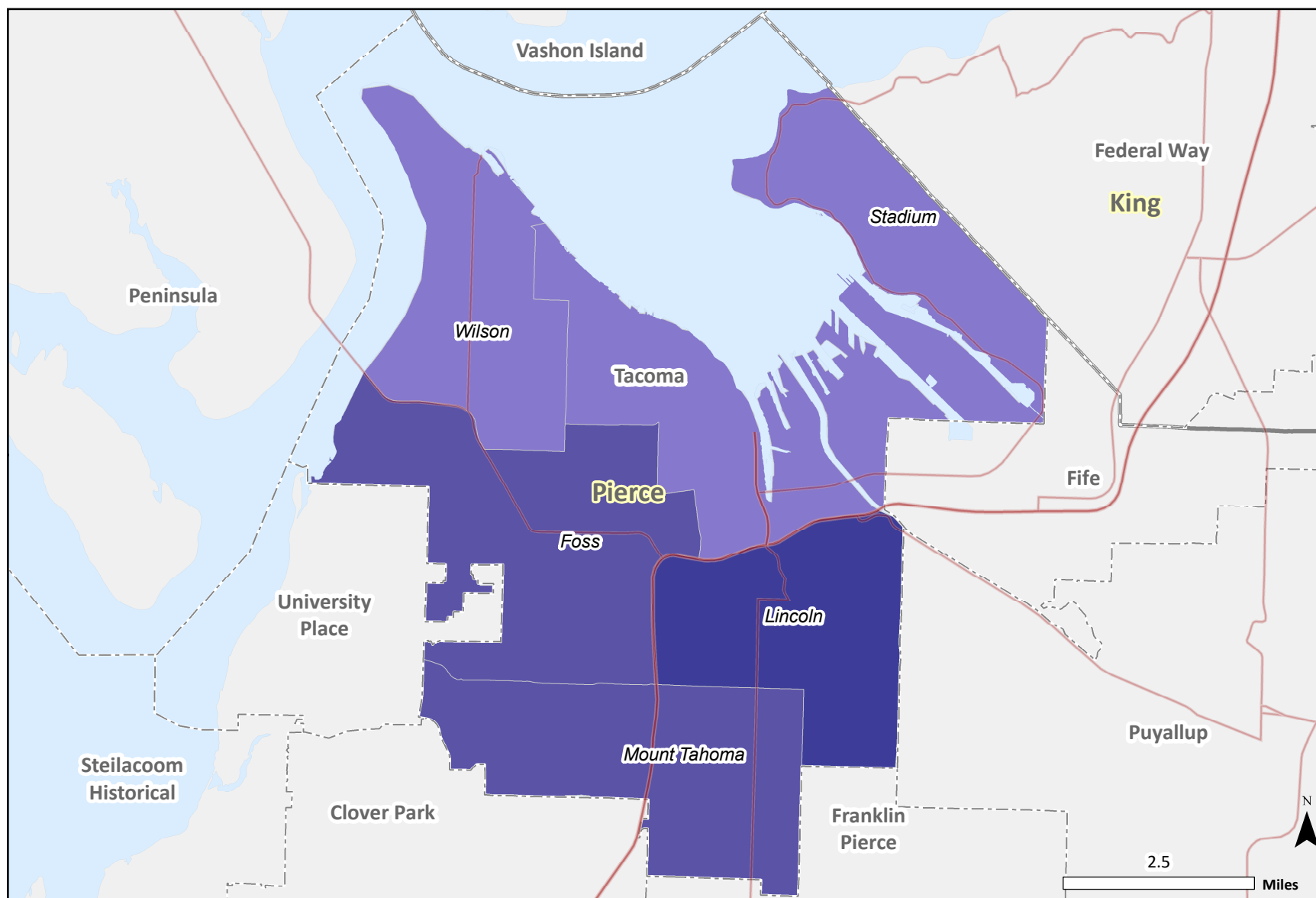


DATA NOTES: The percentile of the composite risk scores. The composite risk scores were calculated using standardized indicators in marijuana consumption and consequence. Cartography: Irina Sharkova.

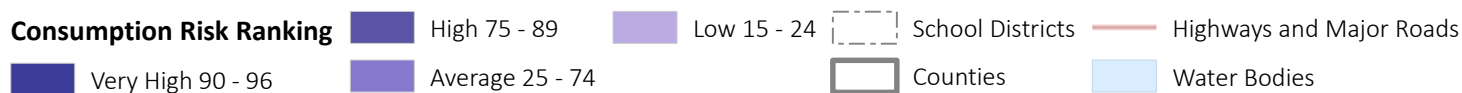
SOURCE: DSHS Research and Data Analysis, Community Outcome and Risk Evaluation Information System (CORE).

Marijuana Consumption Ranking

by High School Attendance Area, Tacoma School District, 2018



Consumption Risk Ranking



DATA NOTES: The percentile of the consumption risk scores. The consumption risk scores were calculated using standardized indicators in marijuana consumption. Cartography: Irina Sharkova.

SOURCE: DSHS Research and Data Analysis, Community Outcome and Risk Evaluation Information System (CORE).

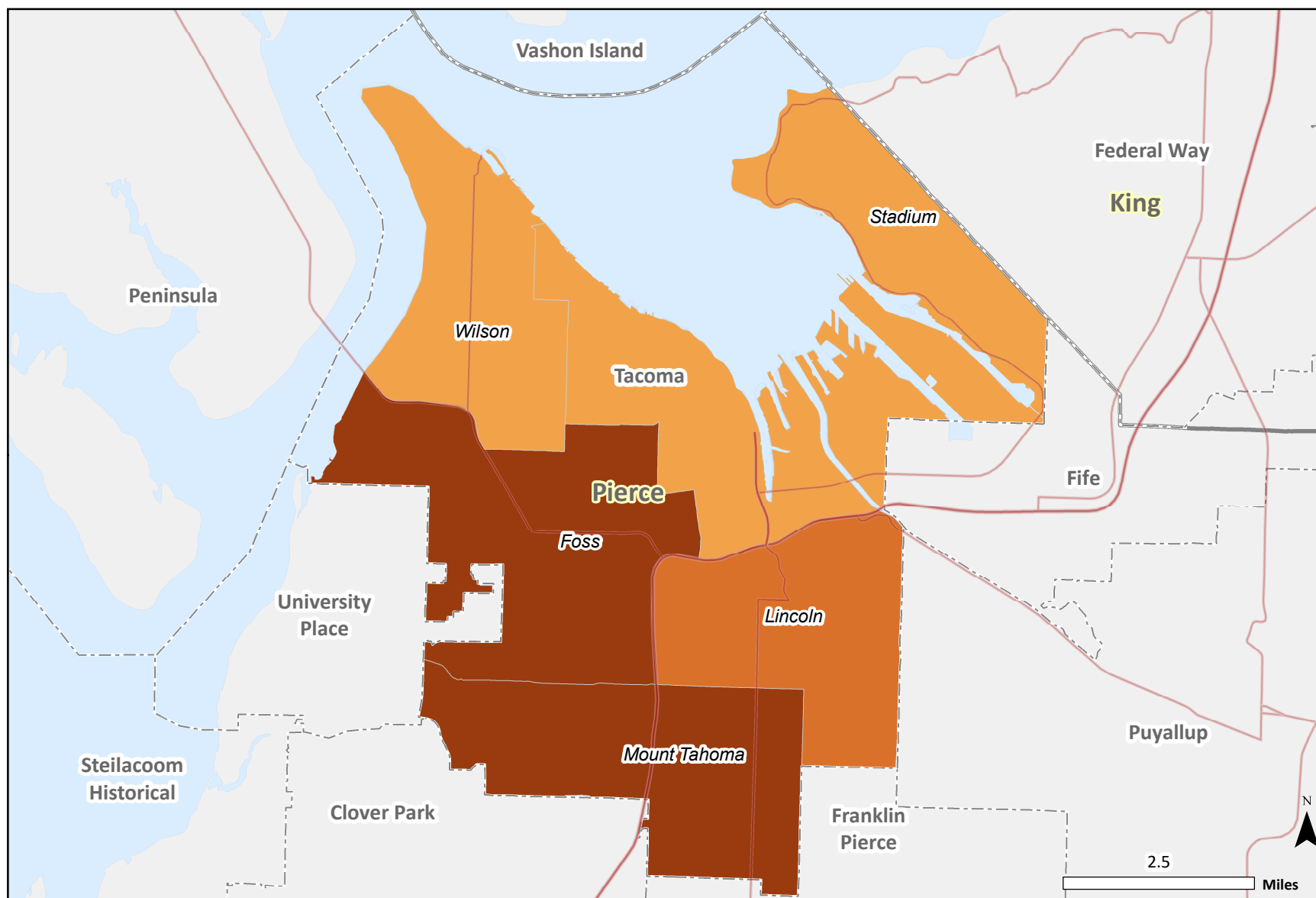


Transforming lives

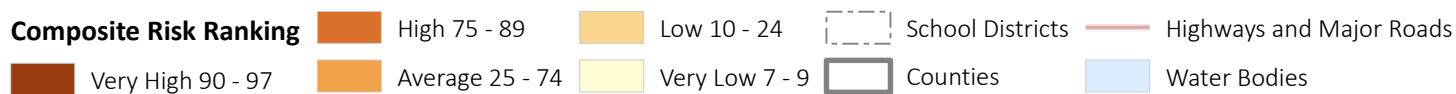
March 20, 2018

Alcohol, Tobacco and Other Drugs Composite Ranking

by High School Attendance Area, Tacoma School District, 2018



Composite Risk Ranking



DATA NOTES: The percentile of the composite risk scores. The composite risk scores were calculated using standardized indicators in the alcohol, tobacco and other drugs (ATOD) consumption and consequence. Cartography: Irina Sharkova.

SOURCE: DSHS Research and Data Analysis, Community Outcome and Risk Evaluation Information System (CORE).

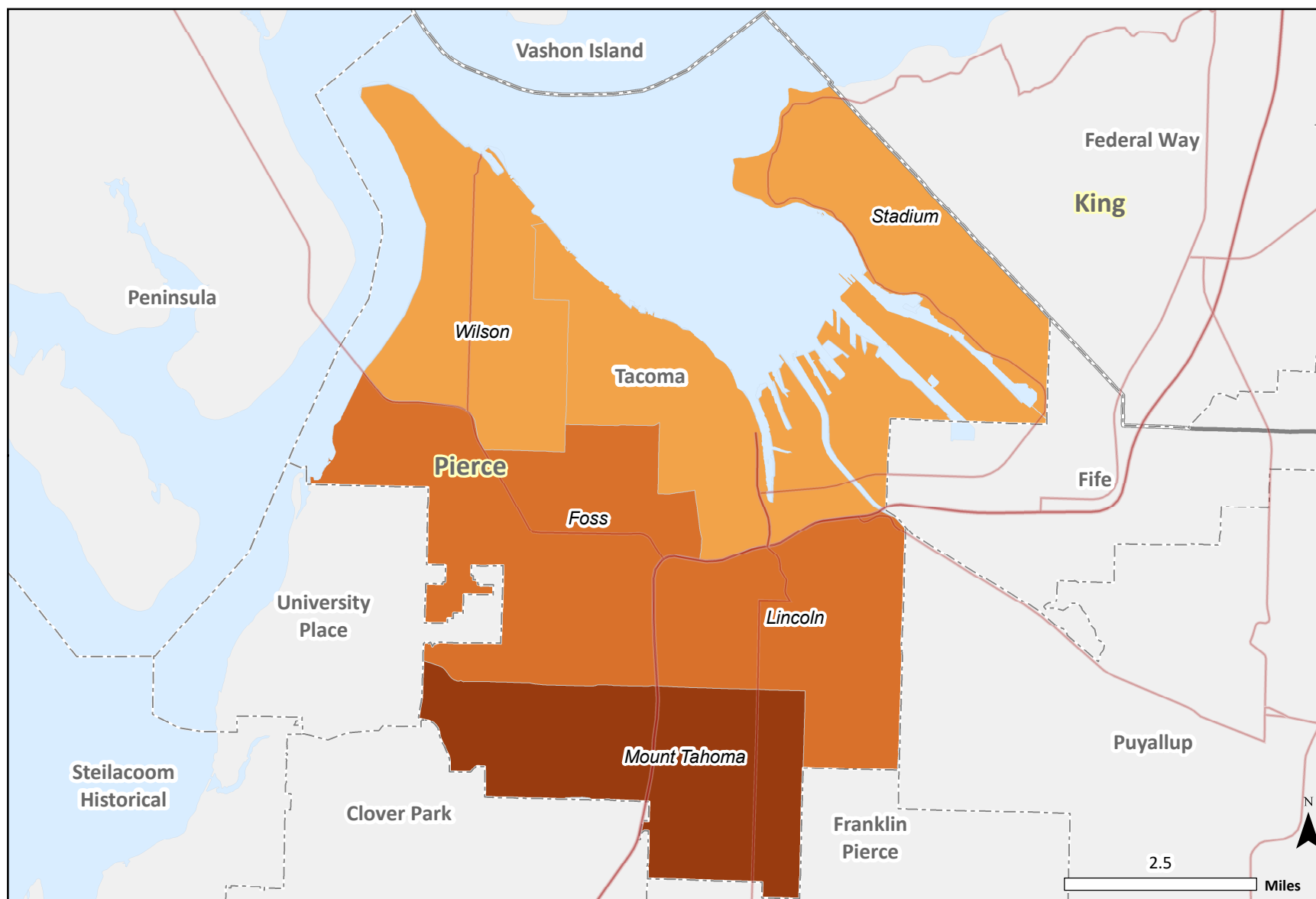


Transforming lives

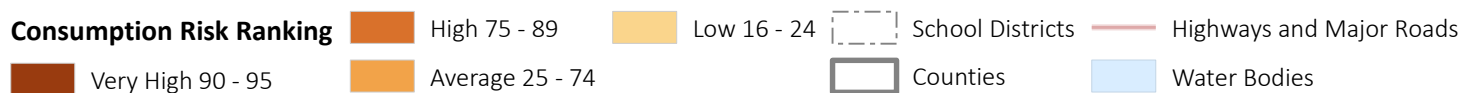
March 20, 2018

Alcohol, Tobacco and Other Drugs Consumption Ranking

by High School Attendance Area, Tacoma School District, 2018



Consumption Risk Ranking

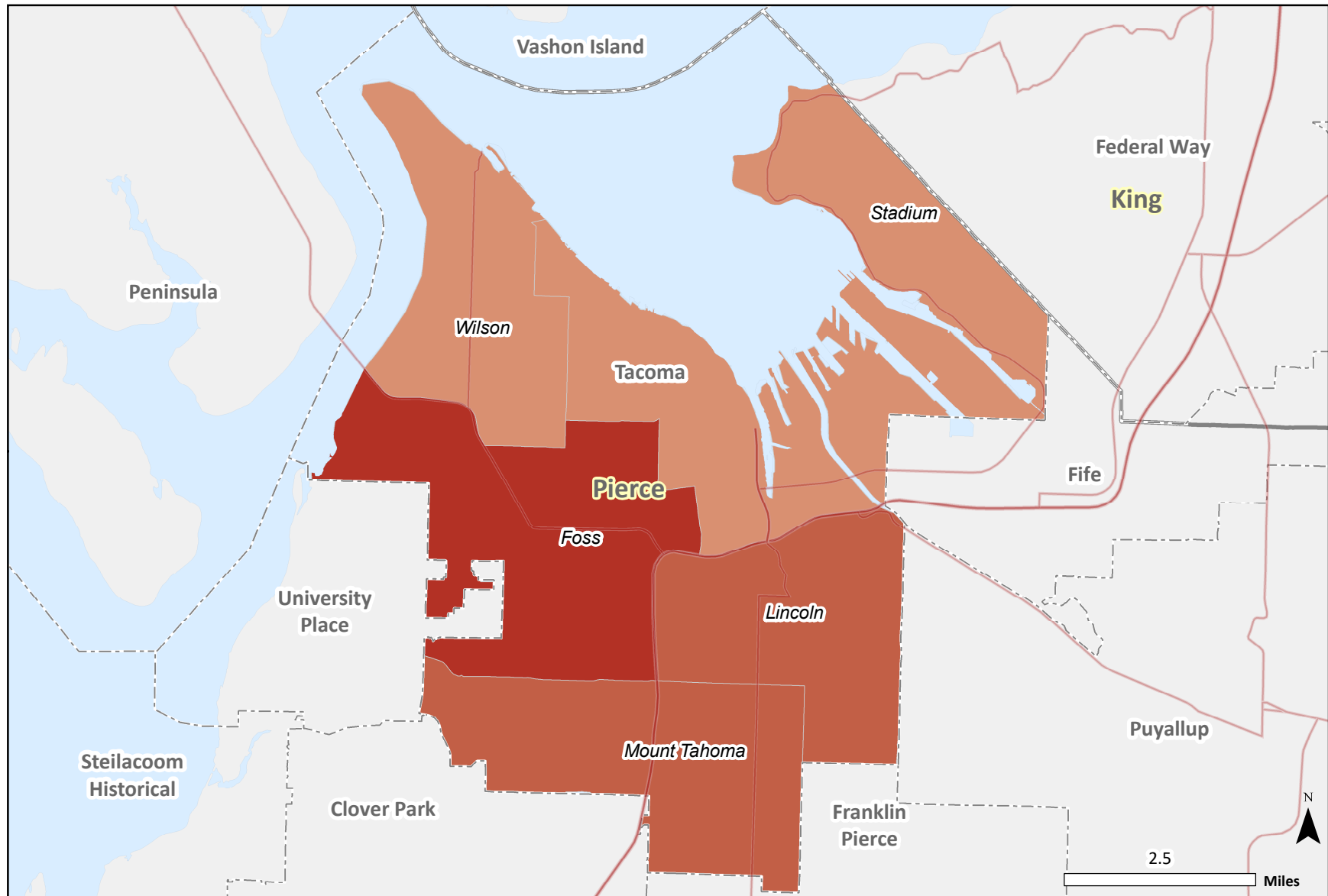


DATA NOTES: The percentile of the consumption risk scores. The consumption risk scores were calculated using standardized indicators in the alcohol, tobacco and other drugs (ATOD) consumption. Cartography: Irina Sharkova.

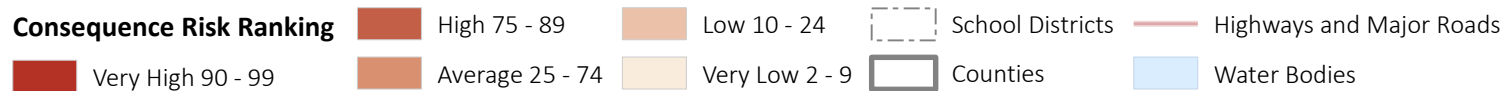
SOURCE: DSHS Research and Data Analysis, Community Outcome and Risk Evaluation Information System (CORE).

Consequence Risk Ranking

by High School Attendance Area, Tacoma School District, 2018



Consequence Risk Ranking



DATA NOTES: The percentile of the consequence risk scores. The consequence risk scores were calculated using standardized indicators in three sub-domains: school performance, youth delinquency, and mental health. Cartography: Irina Sharkova.

SOURCE: DSHS Research and Data Analysis, Community Outcome and Risk Evaluation Information System (CORE).