

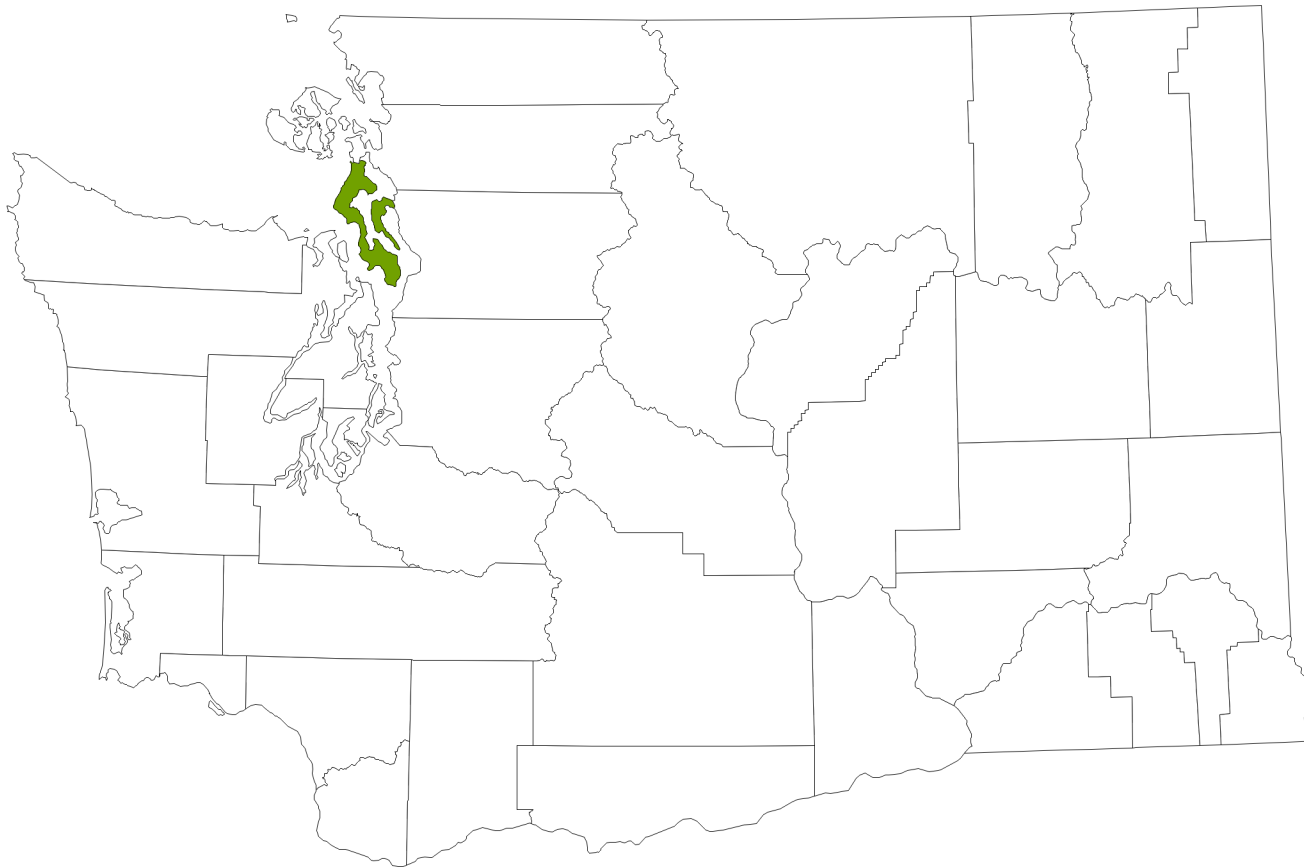
# 2020 Community Risk Profile Summary

## Island County

February 2020

### Indicators associated with substance use prevention and mental health promotion.

Presented at the State, County, and School District level for use by communities in directing their resources and in seeking additional funding.



### CONTRIBUTORS

DSHS Research and Data Analysis Division: Aaron Starks, MA | Grace Hong, PhD | Irina Sharkova, PhD

In collaboration with the HCA Division of Behavioral Health and Recovery, Substance Use Disorder Prevention and Mental Health Promotion Section:

Kasey Kates, MSW, Policy and Program Supervisor | Sandy Salivaras, MSc, MPH, Epidemiological Prevention Research and Evaluation Manager | Sarah Mariani, CPP, Section Manager

## **ABOUT THIS REPORT**

This summary report has been developed for the Community Prevention and Wellness Initiative (CPWI) to assist coalitions in their prevention strategic planning. We have included data from your county, presented by school district, for the assessment of problems associated with substance use. This report is intended to serve as a starting point for your planning and assessment work. Additional data that can only be collected locally will help with the interpretation of the data and in other ways enhance this assessment process.

The Community Prevention and Wellness Initiative is a project of the Health Care Authority's Division of Behavioral Health and Recovery (DBHR) in collaboration with the Office of the Superintendent of Schools (OSPI). The Department of Social and Health Services' Division of Research and Data Analysis is a key partner that leads the publication of this report and the associated data.

## **ABOUT THE DATA**

The CORE contains archival indicators (or social indicators) that are highly correlated with adolescent substance use, and the risk factors that predict substance use. There are currently 47 indicators, most of which originate from the Department of Health, Department of Social and Health Services, Uniform Crime Report/National Incident-Based Reporting System, and the Office of the Superintendent of Public Instruction. The data are published twice a year on a public website, and reported at the lowest feasible geography level: state, county, school district/community, and locale (a geography that incorporates more than one school district when the base population of the school district is too low for reliable reporting). See <https://www.dshs.wa.gov/ffa/research-and-data-analysis/community-risk-profiles>.

The Risk Rankings table(s) and maps have been developed using the data from CORE and Healthy Youth Survey (HYS). School district-level and more detailed HYS data are password protected and require a data sharing agreement with the Department of Health. State and county reports are available to the public at AskHYS.net.

## **FOR MORE INFORMATION**

Questions about this report or the Community Prevention and Wellness Initiative may be directed to the DBHR Training team at [PxTraining@hca.wa.gov](mailto:PxTraining@hca.wa.gov).

| ISLAND COUNTY   |                        | RISK RANKING      |                      | RISK CATEGORY RANK |             | CONTEXTUAL INDICATORS |                 |
|-----------------|------------------------|-------------------|----------------------|--------------------|-------------|-----------------------|-----------------|
| School District | Population: Age 10-17* | Rank for Variable | Indicators with Data | ATMO Consumption   | Consequence | Economic Deprivation  | Troubled Family |
| Coupeville      | 630                    | 8                 | 22                   | Very Low           | Low         | Low                   | Average         |
| Oak Harbor      | 3,153                  | 45                | 22                   | Average            | Average     | Average               | Average         |
| South Whidbey   | 1,170                  | 42                | 22                   | Average            | Average     | Very Low              | Average         |

**NOTES:**

**This risk profile reflects the risk levels of this county as of February 2020. School districts with no high schools are not included in this summary. Please note risk levels and risk rankings may change over time.**

The ATMO consumption risk score is calculated from prevalence of alcohol, tobacco, marijuana, and prescription opioids use. The consequence risk score is calculated from school performance, youth delinquency, and mental health indicators. The overall risk ranking is not computed if either consumption or consequence score is missing.

A Risk Category Rank of "Very High" indicates the referenced School District Risk Score was in the top 10% of School Districts in the risk category.

A Risk Category Rank of "High" indicates the referenced School District Risk Score was in the top 25% of School Districts in the risk category.

A Risk Category Rank of "Average" indicates the referenced School District Risk Score was between 25% and 75% of School Districts in the risk category.

A Risk Category Rank of "Low" indicates the referenced School District Risk Score was in the bottom 25% of School Districts in the risk category.

A Risk Category Rank of "Very Low" indicates the referenced School District Risk Score was in the bottom 10% of School Districts in the risk category.

**Review Considerations**

1) To get an overall sense of risk severity for both consumption and consequence, examine the "Risk Percentile". It reflects what % of School District had a Risk Score LOWER than the referenced School District.

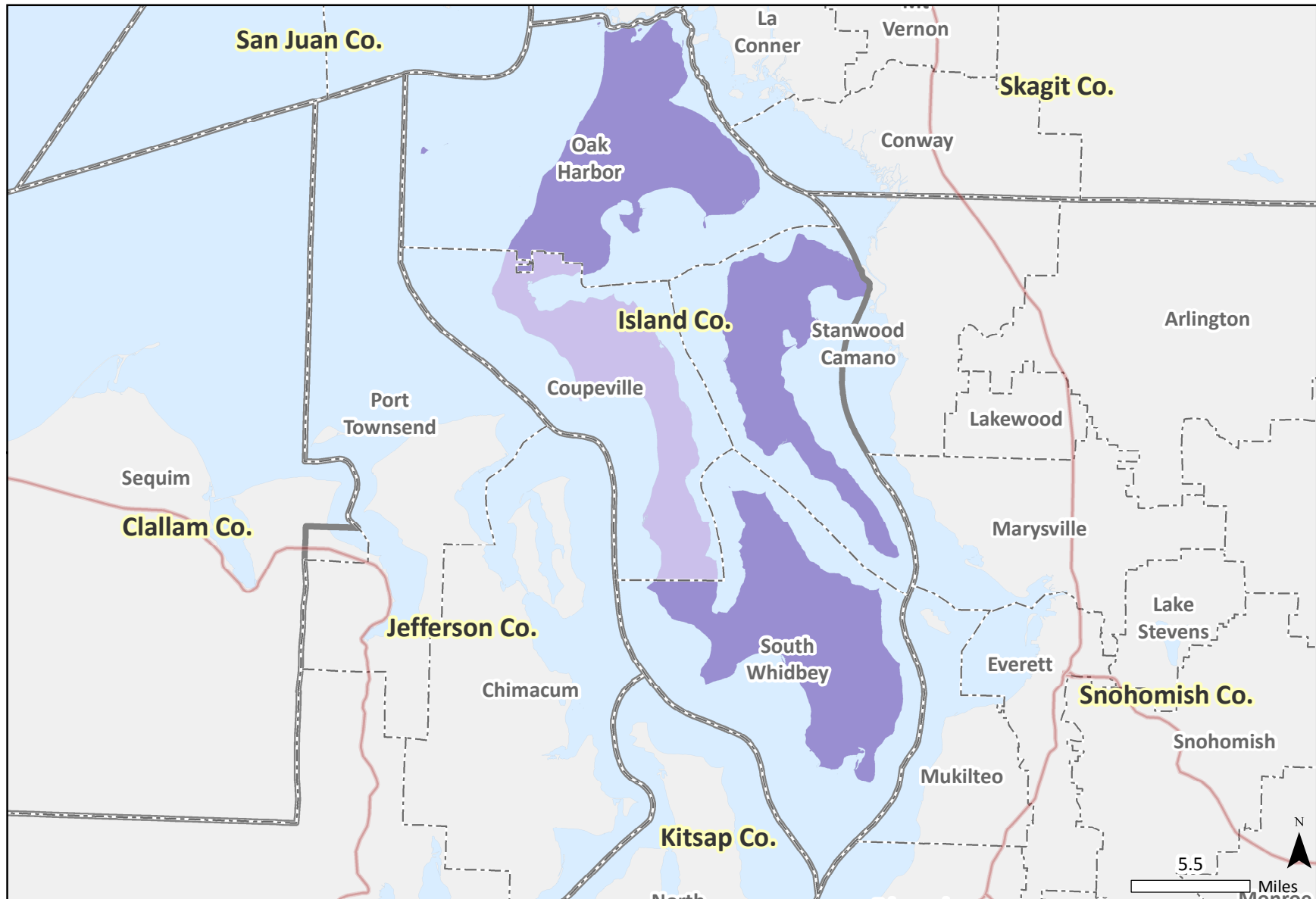
2) To ensure that the risk score is meaningful, examine the "Indicators with data" column. Risk scores based on few indicators should be interpreted with caution. In total, 21 indicators were used.

3) To consider other contextual information, examine the "Population: Age 10-17", "economic deprivation" indicator, and the "troubled family" indicator. Note the "Population 10-17 year olds" value may be greater than district enrollment as it accounts for kids not in school as well as those in private schools.

\* This is a 5-year average value.

# Marijuana Composite Ranking

by School District, Island County



**Composite Risk Ranking**

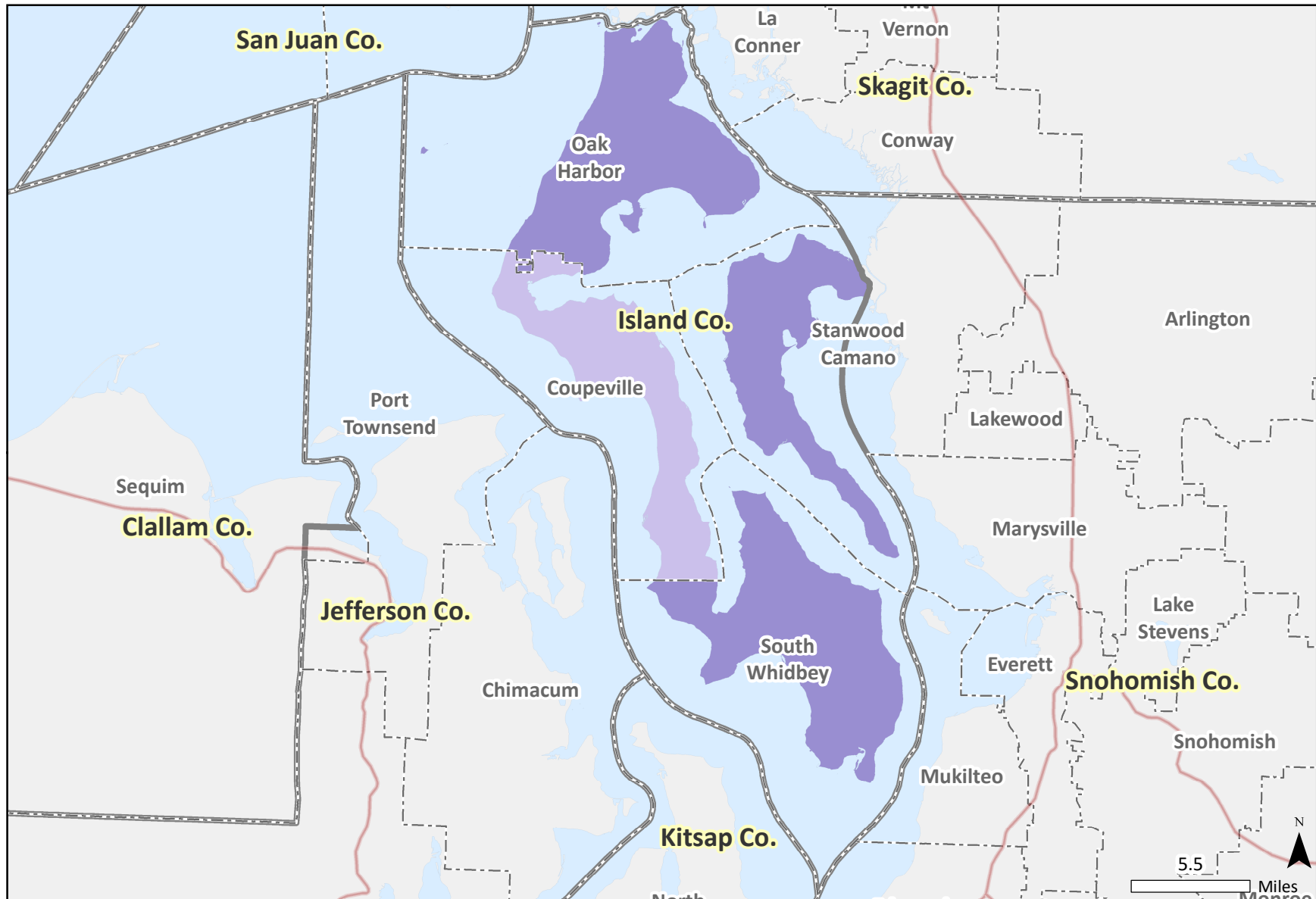
|                   |                |             |          |                  |                          |
|-------------------|----------------|-------------|----------|------------------|--------------------------|
| Very High 90 - 99 | High 75 - 89   | Low 10 - 24 | No data  | School Districts | Highways and Major Roads |
| Average 25 - 74   | Very Low 0 - 9 |             | Counties | Water Bodies     |                          |

**DATA NOTES:** The percentile of the composite risk scores. The composite risk scores were calculated using standardized indicators in marijuana consumption and consequence. Cartography: Irina Sharkova.

**SOURCE:** DSHS Research and Data Analysis, Community Outcome and Risk Evaluation Geographic Information System (CORE GIS).

# Marijuana Consumption Ranking

by School District, Island County

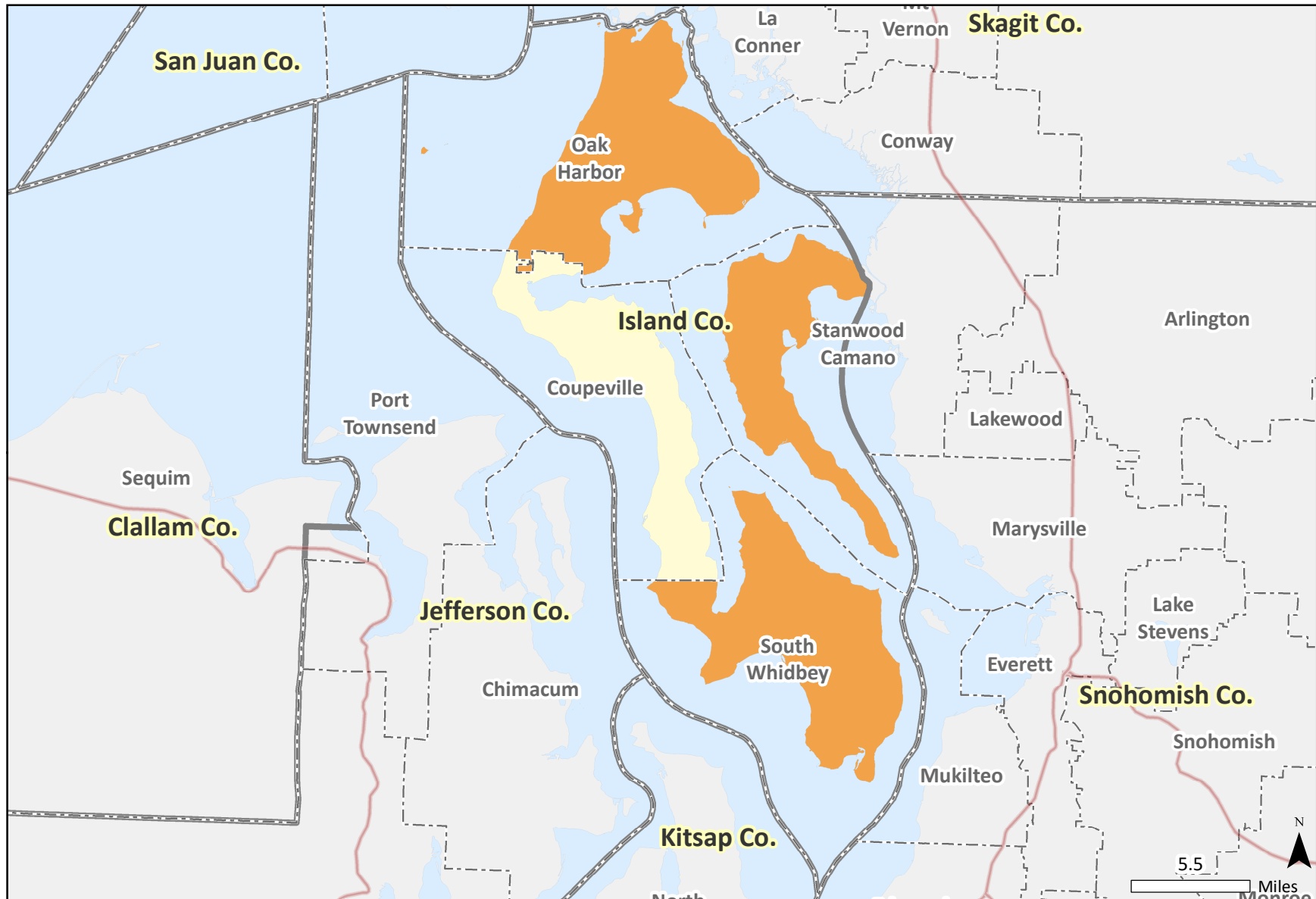


**Consumption Risk Ranking**

|   |   |  |   |  |  |   |  |   |
|---|---|--|---|--|--|---|--|---|
| <span style="display:inline-block; width:15px; height:15px; background-color:darkblue;"></span> Very High 90 - 99 | <span style="display:inline-block; width:15px; height:15px; background-color:mediumslateblue;"></span> High 75 - 89 | <span style="display:inline-block; width:15px; height:15px; background-color:lightblue;"></span> Average 25 - 74 | <span style="display:inline-block; width:15px; height:15px; background-color:lightcyan;"></span> Very Low 0 - 9 | <span style="display:inline-block; width:15px; height:15px; background: repeating-linear-gradient(45deg, transparent, transparent 2px, gray 2px, gray 4px);"></span> No data | <span style="border: 1px dashed gray; display:inline-block; width:15px; height:15px;"></span> School Districts | <span style="border: 1px solid gray; display:inline-block; width:15px; height:15px;"></span> Counties | <span style="border-bottom: 2px solid red; display:inline-block; width:15px;"></span> Highways and Major Roads | <span style="display:inline-block; width:15px; height:15px; background-color:lightblue;"></span> Water Bodies |
|---|---|--|---|--|--|---|--|---|

# Alcohol, Tobacco, Marijuana and Prescription Opioids Composite Ranking

by School District, Island County



**Composite Risk Ranking**

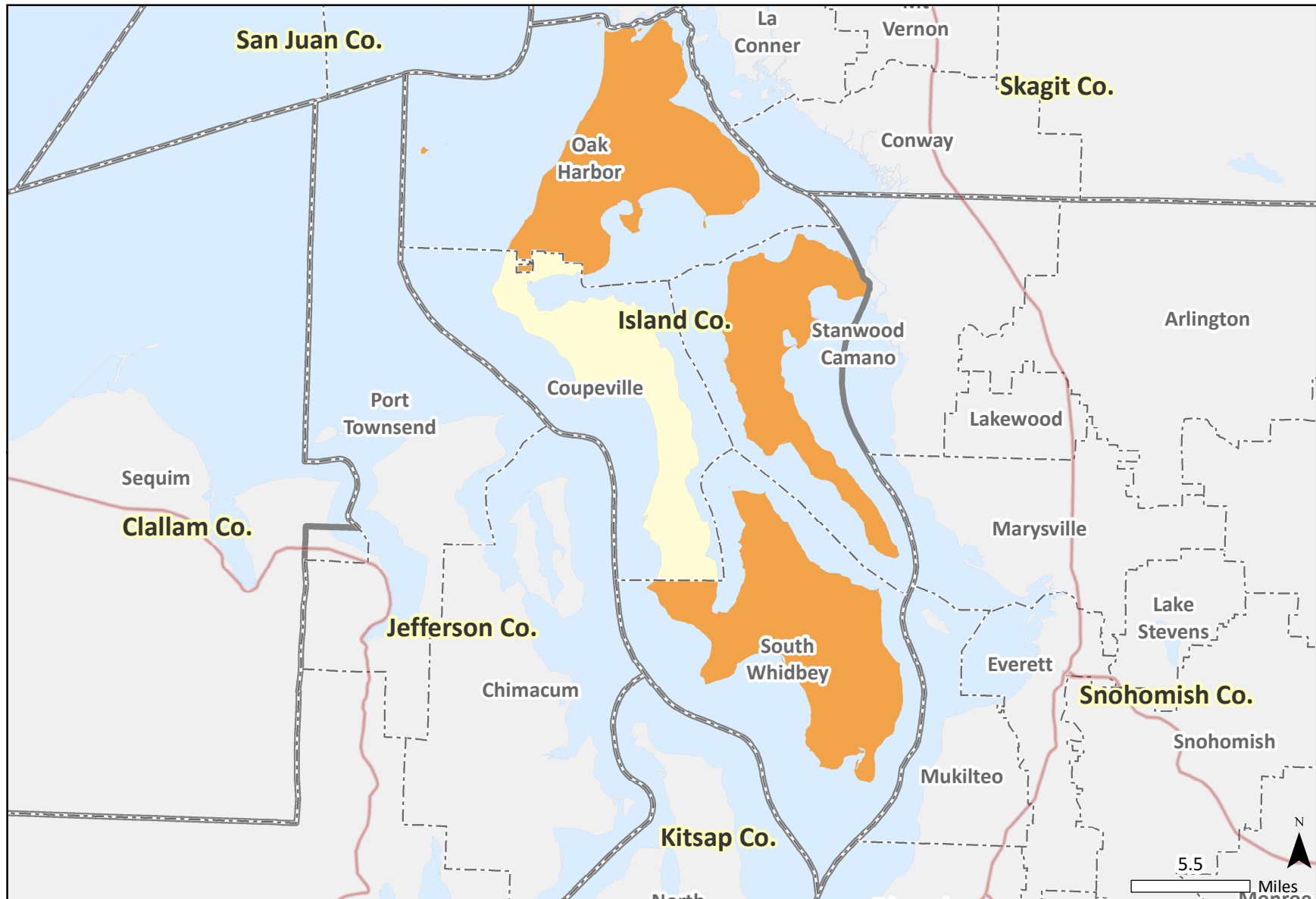
|   |   |  |   |  |
|---|---|--|---|--|
| <span style="display:inline-block; width:15px; height:15px; background-color:orange;"></span> High 75 - 89          | <span style="display:inline-block; width:15px; height:15px; background-color:yellow;"></span> Low 10 - 24     | <span style="display:inline-block; width:15px; height:15px; border:1px dashed gray;"></span> No data         | <span style="display:inline-block; width:15px; height:15px; border:1px dashed gray;"></span> School Districts | <span style="display:inline-block; width:15px; height:15px; border-bottom:2px solid red;"></span> Highways and Major Roads |
| <span style="display:inline-block; width:15px; height:15px; background-color:darkorange;"></span> Very High 90 - 99 | <span style="display:inline-block; width:15px; height:15px; background-color:orange;"></span> Average 25 - 74 | <span style="display:inline-block; width:15px; height:15px; background-color:yellow;"></span> Very Low 0 - 9 | <span style="display:inline-block; width:15px; height:15px; border:2px solid gray;"></span> Counties          | <span style="display:inline-block; width:15px; height:15px; background-color:lightblue;"></span> Water Bodies              |

**DATA NOTES:** The percentile of the consumption risk scores. The consumption risk scores were calculated using standardized indicators in the alcohol, tobacco, marijuana and prescription opioids (ATMO) consumption and consequence. Cartography: Irina Sharkova.

**SOURCE:** DSHS Research and Data Analysis, Community Outcome and Risk Evaluation Geographic Information System (CORE GIS).

# Alcohol, Tobacco, Marijuana and Prescription Opioids Consumption Ranking

by School District, Island County

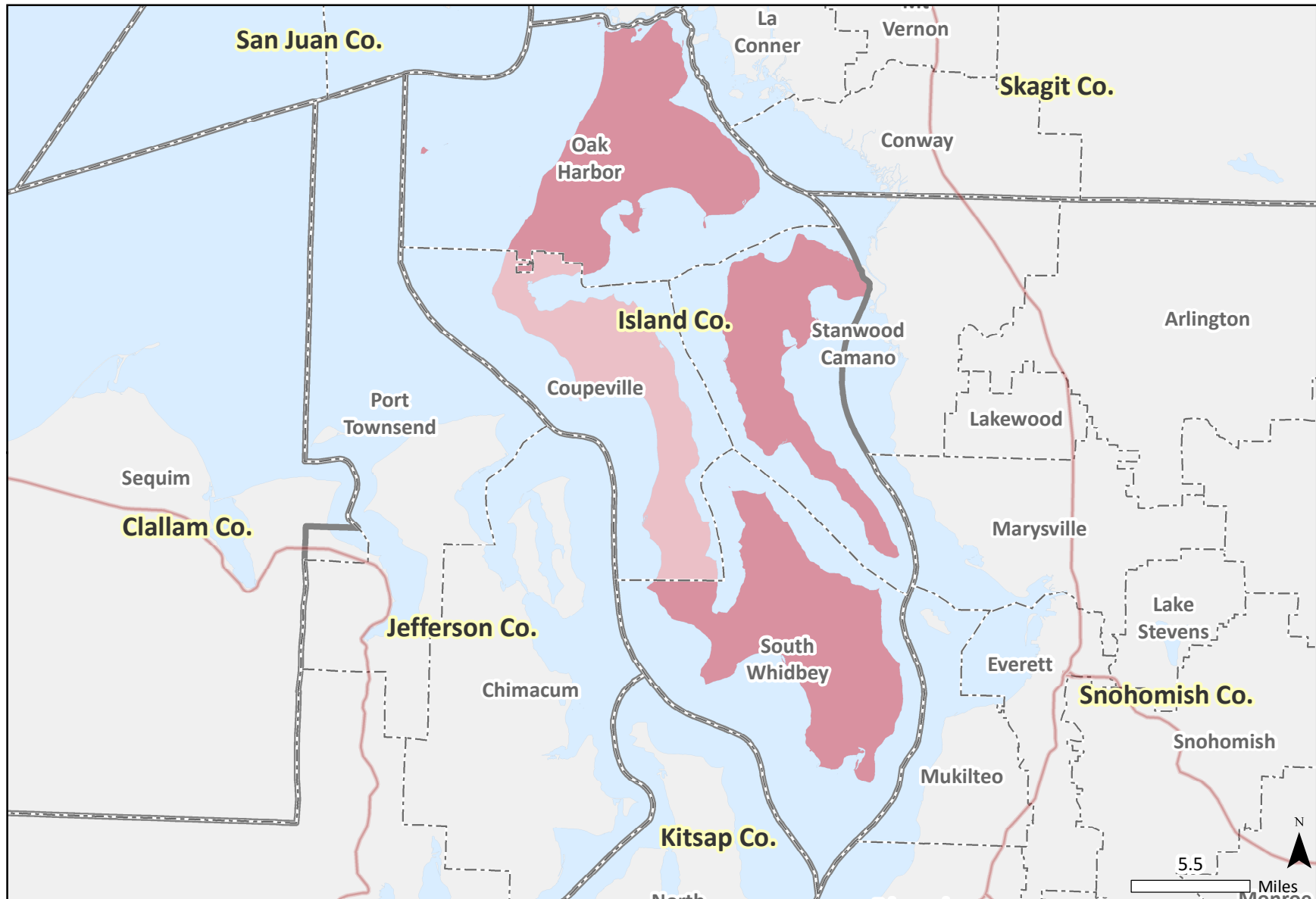


**Consumption Risk Ranking**

|   |  |  |   |   |   |  |   |   |   |
|---|--|--|---|---|---|--|---|---|---|
| <span style="display:inline-block; width:15px; height:15px; background-color:darkorange;"></span> Very High 90 - 99 | <span style="display:inline-block; width:15px; height:15px; background-color:orange;"></span> High 75 - 89 | <span style="display:inline-block; width:15px; height:15px; background-color:lightorange;"></span> Average 25 - 74 | <span style="display:inline-block; width:15px; height:15px; background-color:yellow;"></span> Low 10 - 24 | <span style="display:inline-block; width:15px; height:15px; background-color:lightgrey;"></span> Very Low 0 - 9 | <span style="display:inline-block; width:15px; height:15px; border:1px dashed black;"></span> No data | <span style="display:inline-block; width:15px; height:15px; border:1px dashed black;"></span> School Districts | <span style="display:inline-block; width:15px; height:15px; border:1px solid red;"></span> Counties | <span style="display:inline-block; width:15px; height:15px; background-color:lightblue;"></span> Highways and Major Roads | <span style="display:inline-block; width:15px; height:15px; background-color:lightblue;"></span> Water Bodies |
|---|--|--|---|---|---|--|---|---|---|

# Consequence Risk Ranking

by School District, Island County



**Consequence Risk Ranking**

|  |   |  |  |  |  |   |
|--|---|--|--|--|--|---|
| <span style="display:inline-block; width:15px; height:15px; background-color:#800000;"></span> Very High 90 - 99 | <span style="display:inline-block; width:15px; height:15px; background-color:#C00000;"></span> High 75 - 89 | <span style="display:inline-block; width:15px; height:15px; background-color:#E06666;"></span> Average 25 - 74 | <span style="display:inline-block; width:15px; height:15px; background-color:#F0C0C0;"></span> Low 10 - 24 | <span style="display:inline-block; width:15px; height:15px; background-color:#D3D3D3; border:1px solid black;"></span> No data | <span style="border:1px dashed black; display:inline-block; width:15px; height:15px;"></span> School Districts | <span style="border-bottom:2px solid red; display:inline-block; width:15px;"></span> Highways and Major Roads |
|  |   |  |  | <span style="border:2px solid black; display:inline-block; width:15px; height:15px;"></span> Counties                          | <span style="display:inline-block; width:15px; height:15px; background-color:#ADD8E6;"></span> Water Bodies    |   |

**DATA NOTES:** The percentile of the consequence risk scores. The consequence risk scores were calculated using standardized indicators in three sub-domains: school performance, youth delinquency, and mental health. Cartography: Irina Sharkova.

**SOURCE:** DSHS Research and Data Analysis, Community Outcome and Risk Evaluation Geographic Information System (CORE GIS).