

# March Prevention Provider Meeting

Hosted by: Division of Behavior Health and Recovery

Wednesday, March 25, 2026

9:05-11 a.m. --- Prevention Provider Meeting

11 a.m.-noon --- Third Hour

# As we get started..

---



*Type into chat:*

- ▶ What is a form of self-care or support that you find most helpful?



# Prevention Provider Meetings

Month	Date	Platform	Athena Forum Calendar Link
April	April 22	MS Teams	<a href="#">Training and events calendar   The Athena Forum</a>
May	May 27	MS Teams	<a href="#">Training and events calendar   The Athena Forum</a>
August	August 26	MS Teams	<a href="#">Training and events calendar   The Athena Forum</a>
September	September 23	MS Teams	<a href="#">Training and events calendar   The Athena Forum</a> (Annual Contractor Meeting)

# Today's Agenda

Time	Topic
9:05-9:15 a.m.   10 minutes	Welcome   Introduce New Prevention Providers to the Call   Share Microsoft Teams Webinar features – <i>Codie Garza</i>
9:15-9:25 a.m.   10 minutes	Prevention Budget Updates – <i>Sarah Mariani</i>
9:25-9:45 a.m.   20 minutes	Legislative Session Updates – <i>Billy Reamer</i>
9:45-10:10 a.m.   25 minutes	Statewide Updates – <i>DBHR Prevention Section</i>
10:10-10:35 a.m.   25 minutes	Workforce Development Updates – <i>Codie Garza</i>
10:35-10:50 a.m.   15 minutes	School-Based Services through the Community Prevention and Wellness Initiative – <i>Carola Brenes and Christopher Belisle</i>
10:50-11 a.m.   10 minutes	Break
11-11:10 a.m.   10 minutes	April is Child Abuse Prevention Month – <i>Isaac Wulff</i>
11:10-11:50 a.m.   40 minutes	Don't Sleep on Teen Gambling: An Essential Part of the New Prevention Landscape – <i>Jeremy Whitaker, EdD, MPH</i>
11:50 a.m.-noon   10 minutes	Closing – <i>Codie Garza</i>

# Prevention and Promotion Section Budget Update

---

Sarah Mariani | Section Manager | HCA/DBHR

# 2026 Community Behavioral Health Supplemental Budget

▶ [ESSB 5998 \(2026\)](#); *Section 214: Community Behavioral Health*

## Reductions to existing programs

- Health Engagement Hubs
- Alternative Response Teams
- Alternatives to Arrest and Jail
- Law Enforcement Assisted Diversion grants
- Recovery Navigator Program services
- Clubhouse services
- Oxford House expansion
- University of Washington's Evidence-Based Practice Institute

## Eliminations

- The Bridge Coalition technical support
- Recovery Residence technical support
- MOUD in Jails technical support
- Prescription Opioid Education
- Peer Emotional Support Network
- Statewide recovery organization and mental health education and support contracts

## Transfers

- DBHR's Suicide Prevention and Mental Health Promotion funding transferred to the Department of Health

# 2026 Community Behavioral Health Supplemental Budget (cont.)

---

## Funding swaps

- Behavioral health housing fund switch to from General Fund-State (GF-S) to the Criminal Justice Treatment Account
- Streed Medicine pilot funding switched from GF-S to Federal Medicaid appropriation equivalent to the match amount

## Investments

- Funding for Parent Child Assistance Program enrollment
- Certified Community Behavioral Health Clinic (CCBHC) demonstration funding
- Crisis facilities roadmap
- Kitsap County Recovery Café

# 2026 Legislative Session

---

Billy Reamer | Prevention System Manager | HCA/DBHR

# Legislative Session Overview

---

- ▶ Review of Bills
- ▶ Policy areas to watch for
- ▶ Rule Making
- ▶ Budget impacts

# 2026 Session: Signed by Governor - Alcohol

---

## **ESHB 2476: Alcohol Theater Licenses (Gov. signed 3/11)**

- ▶ Expands alcohol services to restaurant-style theaters from a maximum capacity of 120 to 200 seats
- ▶ Requires an alcohol safety plan to be in place if minors frequent the establishment

# 2026 Session: Signed by Governor - Cannabis

---

## **SHB 2152: Permitting the medical use of cannabis by qualifying patients in specified health care facilities (Gov. signed 3/11)**

- ▶ Establishes standards for policies for the medical use of cannabis at palliative (end of life) care facilities to address the method of use, inclusion in medical records, the presentation of authorizations, responsibility for acquisition and administration, secure storage, prohibitions on health care provider administration, prohibitions on sharing, and disposal requirements.

# 2026 Session: Governor Desk - Education

---

## **SHB 2594: Ensuring that unhoused children and youths in Washington have equal access to free, appropriate public education. (With Gov. for signature)**

- ▶ Codifies provisions and requirements in state law that align with the federal McKinney-Vento Homeless Assistance Act that are ensuring that homeless children and youths have equal access to the same free, appropriate public education as is provided to other children and youths.
- ▶ Provides that the actions of the Office of the Superintendent of Public Instruction, school districts, charter schools, and state-tribal education compact schools that meet requirements of the federal act also satisfy equivalent requirements established in state law.

# 2026 Session: Governors Desk – Education

---

## **E3SHB 1634: Providing school districts and public schools with assistance to coordinate comprehensive behavioral health supports for students. (With Gov. for signature)**

- ▶ Requires the Office of the Superintendent of Public Instruction (OSPI) and the educational service districts (ESDs) to collaborate and coordinate with state, regional, and local agencies and community partners involved in behavioral health services for children and youth to develop a technical assistance and training framework (framework) to provide school districts and public schools with assistance in supporting student behavioral health.
- ▶ Requires the OSPI and the ESDs to use the framework to optimize delivery and coordination of behavioral health technical assistance and supports, once it is developed.

# 2026 Session: Dead Bills- Tobacco

---

## **ESSB 6129: Concerning the taxation of cigarettes, vapor products, and other products containing tobacco or nicotine.**

- ▶ Codifies Replaces the various tax rates imposed on tobacco products with a single rate of 95 percent of the taxable sales price for all products containing nicotine except for cigarettes.
- ▶ Repeals the tax on vapor products.
- ▶ Increases the cigarette tax to \$5 per package of 20 cigarettes.
- ▶ Reinstates and modifies vapor product tax revenue distributions to the Andy Hill Cancer Research Endowment Fund Match Transfer Account and the Foundational Public Health Services Account.
- ▶ Dedicates the first \$10 million collected on the additional cigarette tax each fiscal year to the Youth Tobacco and Vapor Products Prevention Account.
- ▶ Authorizes the Governor to renegotiate tribal tax compacts for cigarettes and vapor products.

# LCB Rulemaking and Engagement

---

## ▶ Alcohol

- ▶ Alcohol product placement – Informal comment period

## ▶ Cannabis

- ▶ Cannabis Advertising - ESB 5206
- ▶ Cannabis Batch tracking – WAC 314-55-083 to track plants in batches rather than individually

For more information on currently open rule projects through LCB, you can check their dashboard:

<https://lcb.wa.gov/research/dashboards/rules-tracker>

# Policy Issues that may Return

---

- ▶ **Alcohol:** BAC limit
- ▶ **Cannabis:** Home Grow, Move some regulation to Department of Agriculture, Ongoing issues related to Hemp-based Cannabinoids, Consumption sites
- ▶ **Tobacco/Vape:** Continued efforts to address taxation, Tobacco Flavor ban, Vape Product Directory
- ▶ **Opioids:** Kratom, Nitrous Oxide, non-opioid pain management
- ▶ **Early Learning and Intervention:** Funding for statewide behavioral health services, various tax modifications for funding for education, AI issues related to education.

# Educational Resources

---

## ▶ Research Briefs:

▶ <https://theathenaforum.org/prevention-101/research-briefs-substance-use-prevention-and-mental-health-promotion>

- ▶ The power of prevention across domains
- ▶ Negative health impacts of high-THC products
- ▶ Vaping nicotine: high risk for adolescents
- ▶ Protecting youth from the harmful effects of alcohol, cannabis, and commercial tobacco (nicotine) marketing and promotion

## ▶ CPWI Outcomes Summary:

▶ Can be found on the CPWI Athena page: <https://theathenaforum.org/cpwi>

## ▶ Prevention Voices (outside resource):

- ▶ Legislative Session Debrief on April 16th from 2-3pm. Register here: <https://us06web.zoom.us/meeting/register/CXMqrQqKSbCf12kcbJjXgA>
- ▶ Prevention Voices website: <https://www.wasavp.org/prevention-voices-wa>

# Statewide Updates

---

SUD Prevention and MH Promotion Section  
HCA/DBHR

# SAMSHA Site Visit

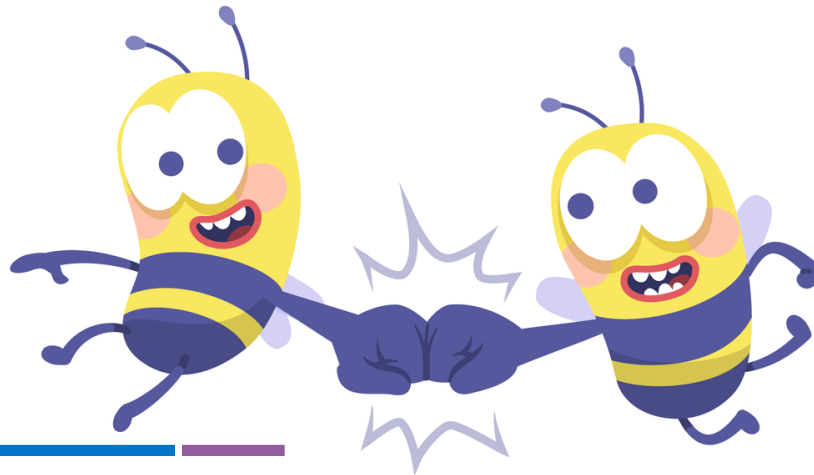
---

**When:** April 20-23, 2026

**Where:** Olympia, WA and virtual

**Who:** HCA Team, Subrecipients (*have been notified*)

**What:** Review the incredible work happening in our state!



# SAMSHA Site Visit

---

## ▶ **Advisory Workgroup**, April 20

- ▶ There will be time for two-directional Q&A

## ▶ **Prevention Provider Meeting**, April 22

- ▶ We would like to have YOU share success stories!
  - ▶ Send your success stories to your Prevention System Manager by April 8
    - If selected, prepare 1-2 slides by April 15
    - Other success stories will be provided to SAMSHA
- ▶ There will be time for Q&A
  - ▶ Send your questions for consideration to your Prevention System Manager by April 10.

# Healthy Youth Survey

---

- ▶ 2025 quality assurance underway!
- ▶ Preparing for April 2026 press release + results
  - ▶ Some delays: might be closer to late than mid April
  - ▶ Recorded webinars and other results presentations to begin late April through June 2026
- ▶ Reminder – 2027 Revision process paused.
  - ▶ Thank you for thoughtful feedback submitted through AskHYS.net  
[https://lgan.qualtrics.com/jfe/form/SV\\_5dUI6jnnaNgM30a](https://lgan.qualtrics.com/jfe/form/SV_5dUI6jnnaNgM30a)

***Thank you for your partnership and commitment: we could not do this without you!***

# Minerva

---

## ▶ **Updated** Survey Selection Guide (version 8)

- ▶ Published on 03/17/2026
- ▶ Corrects an oversight; instrument SFWSU\_AXs has been added to the logic model Family Mngmt Problems, Use of family management skills.
- ▶ On [The Athena Forum](#) on the [Minerva page](#) under [Surveys/Tests](#), and in [Minerva 2.0](#) under [Resources](#) on the [State Resources page](#).

# Minerva

---

- ▶ **Updated** New User Training Slides (Days 1 and 2)
  - ▶ New for state fiscal year 2026
  - ▶ Updated to include more visuals from Minerva 2.0, and clearer reporting guidance including reporting rules and requirements by sub-channel
  - ▶ Broken into two resources: Day 1 and Day 2.
  - ▶ In [Minerva 2.0](#) under [Resources on the State Resources page](#).

# Minerva

---

- ▶ **Updated** Welcome to Minerva 2.0 (version 2) + New User Quiz
  - ▶ New for state fiscal year 2026
  - ▶ Updated with new AI text to speech technology for a friendlier, easy to follow automated voice. Added clear information on system navigation and how to use Minerva 2.0 resources.
  - ▶ In [Minerva 2.0](#) under [Help on the Training page](#).

# Minerva

---

## ▶ **NEW** Query Builder templates and export automation

### Query Builder

The screenshot displays the 'Query Builder' interface. At the top, there is a section for 'Query Templates' with a green checkmark icon. Below this, the text 'Load Saved Template' is followed by a dropdown menu containing the text 'Select a template...'. To the right of the dropdown are three buttons: 'Load Template' (orange), 'Save Current as Template' (green), and 'Delete Template' (red). Below the template management section is a section for 'Query Automation' with a green right-pointing chevron icon. At the bottom of the interface, there are four tabs: 'Data Source' (highlighted in light blue), 'Date Range', 'Filters', and 'Columns'. Below the tabs, the text 'Identify the root source of data used in the data export.' is displayed.

*Follow the data confidentiality and suppression rules in your contract.*

# Minerva

---

- ▶ **Cancelled** External technical support call
  - ▶ ~~Wednesday, April 8 from 9 a.m. – 10 a.m.~~
- ▶ **Reminder** Quarterly New User Training series
  - ▶ **Through Microsoft Teams**
  - ▶ **Quarter 4**
    - ▶ Day 1, May 12, 2026, 9 a.m. to 4:30 p.m. AND
    - ▶ Day 2, May 14, 2026, 9 a.m. to 4:30 p.m.
  - ▶ **NEW registration link** available on The Athena Forum Training & Event calendar: [Register here](#)

# Expenditure Request

---

- ▶ A&R / FSI Documents are in the works for both CPWI and CBO providers!
- ▶ The addition and removal of funding is being completed now.
- ▶ Expect A&R / FSI Documents in the next 1-2 weeks with an active date of April 1.
- ▶ This will include any SFY 2026 & 2027 requests.
- ▶ *Up next: SFY 2027 allocations for CPWI. Anticipate more information in next 2-3 weeks.*

# Community Survey – *Provider Spotlight*

---

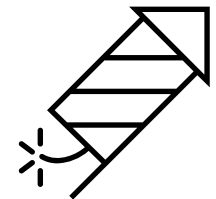
## ▶ **Congratulations** to Sedro-Woolley RISE!

- ▶ As of yesterday, 249 responses... *and still climbing!*
- ▶ That's 180% of 2026 target!



## ▶ **Coalition Coordinator:** *Samantha Stormont*

- ▶ *How did you do it, Sam?*



▶ **Distribution:** Coalition partners, district messaging app

▶ **Framing:** RISE branding, survey questions as "headlines"

▶ **Balancing:** Shifting focus now to underrepresented responders through community events, key partners, etc.

# Workforce Development

---

SUD Prevention and MH Promotion Section

HCA/DBHR

# welcome

*Please raise your hand or type into the question pane if you are new to the Prevention community and we would love to welcome you!*



*Congrats to everyone who has recently obtained or renewed their CPP!*

# Strategic Planning Training Series

---

## Basic Knowledge & Capacity

3/5/26: Introduction to Prevention Science: Risk & Protective Factor Theory – recording available on [Athena](#)

4/2/26: Building Culture of Participation – [registration open](#)

5/4/26: Processing Skills and Effective Meetings

---

## Assessment

6/1/26: Needs Assessment and How to Use Data

6/22/26-6/24/26 (CLI): Resource Assessment / Gap Analysis – previous training available on [Athena](#)

9/14/26: Planning and Program Selection

9/23/26: Developing a Monitoring Plan for your Strategic Plan

10/8/26: Data Book Training – previous materials available on [Athena](#)

---

## Planning

6/22/26-6/24/26 (CLI): Coalition Development Series: Logic Model Clinic

6/22/26-6/24/26 (CLI): Community Planning – previous training available on [Athena](#)

---

## Implementation

10/27/26-10/29/26 (Prevention Summit): Effective Implementation

---

## Evaluation

12/26 or 1/27: Reporting and Evaluation – previous training available on [Athena](#)

# Other Training Opportunities

---

## Training

4/6/26-4/8/26: New Coordinator Basic Training ToT – information on [Athena](#)

4/13/26-4/24/26: Ethics in Prevention – information on [Athena](#)

5/8/26-5/29/26: New Coordinator Basic Training – information coming soon

7/20/26-7/23/26: SPF Application for Prevention Success Training – register on [Athena](#)

7/26-9/26: Environmental Strategies Series (SPTAC) - information coming soon

## Conferences

5/8/26: CCSAP annual conference – information on [Athena](#)

5/19/26: Spring Youth Forum

6/22/26-6/24/26: Coalition Leadership Institute

10/2026: Prevention Summit

## Technical Assistance

May 2026 – December 2026: Community of Practice (Provider Meeting 3<sup>rd</sup> Hour)

PTTC offers intensive TA at no cost! Take advantage of this phenomenal resource. Talk to your PSM to determine if you will benefit from this TA.

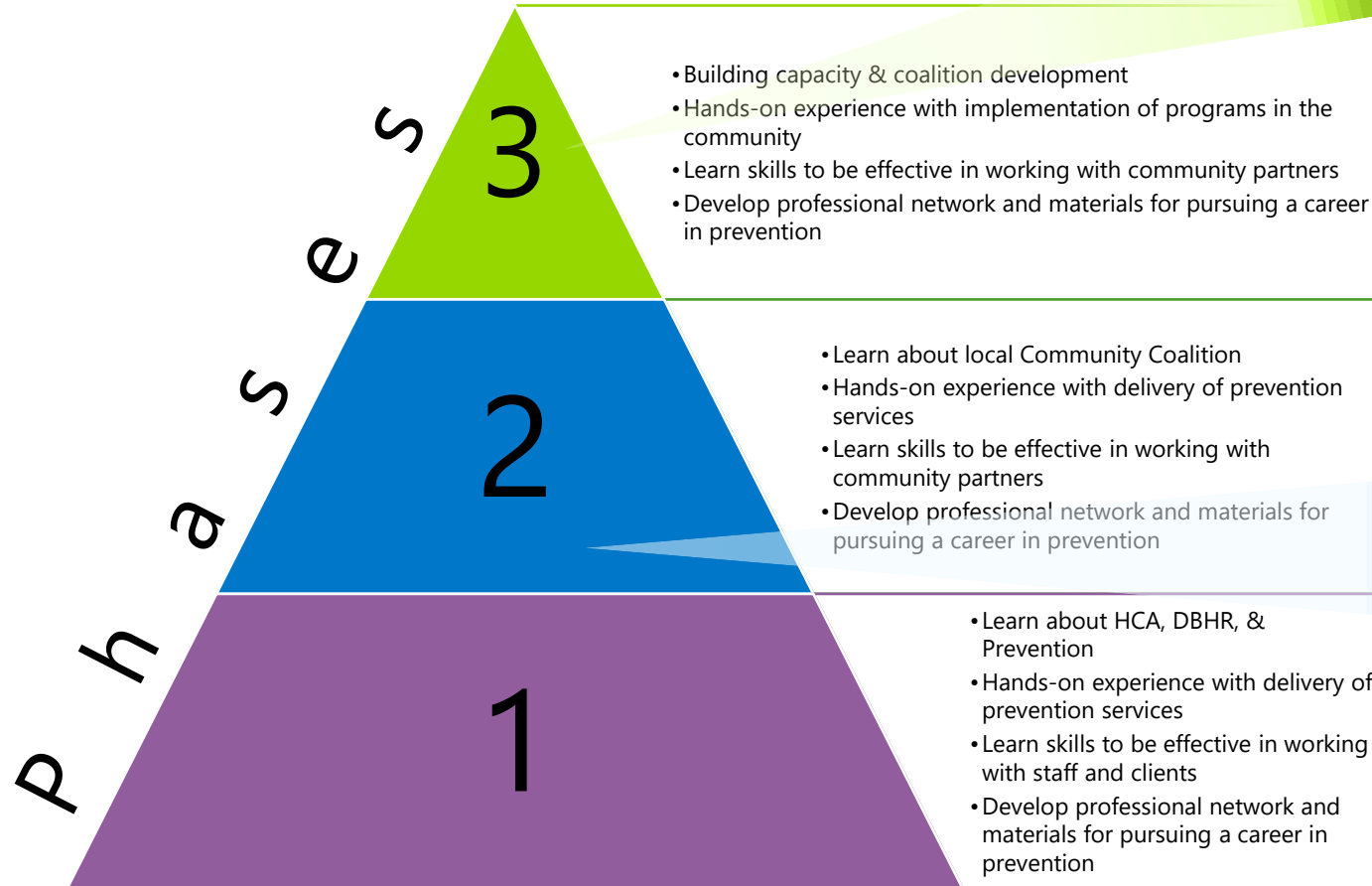
# Fellowship Updates

---

- ▶ Cohort 13 has been **BUSY**
  - ▶ Athena
  - ▶ Grants
  - ▶ Healthy Youth Survey
  - ▶ Evidence-Based Program Support
  - ▶ Policy
  - ▶ Invoice
  - ▶ Events
- ▶ Recruiting for Cohort 14 & 15 to begin soon! (*summer 2026*)



# Interested in hosting a fellow?



- ✓ Offer ongoing but more limited mentorship
- ✓ Continue to provide expertise and advise as needed
- ✓ Offer periodic check-ins and be a ready-resource to the Fellow

- ✓ Provide comprehensive mentorship and support
- ✓ Educate the Fellow on the mission, vision, and operational methods of the local coalition
- ✓ Guide the Fellow through hands-on learning experiences regarding prevention service delivery
- ✓ Introduce the Fellow to key community members and stakeholders to build their professional network
- ✓ Suggest relevant training and development opportunities

# Spring Youth Forum Update

---

- ▶ Save the Date: May 18-19, 2026, at the Great Wolf Lodge
- ▶ Scholarship Application Launched March 16, 2026
  - ▶ Team Adult Advisors must complete the application by **April 3, 2026**
  - ▶ Scholarship applications review begins **March 30, 2026**
  - ▶ Once accepted, registration due by **April 17, 2026**
- ▶ Conference website has been updated:
  - ▶ More information available at:  
[www.SpringYouthForum.org](http://www.SpringYouthForum.org)
  - ▶ Join our List Serv for updates by emailing us at: [SYF@enroutenw.com](mailto:SYF@enroutenw.com)



# 2026 Coalition Leadership Institute (Part 1)

---

## *Mark your calendars!*

- ▶ **Where:** In-person at *Evergreen State College – Evans Hall*
- ▶ **When:** June 22-June 24, 2026
- ▶ **Who:** Attendance is required for CPWI Coalition Coordinators; Day 1 is required for representatives from the Educational Service Districts for school-based services
- ▶ **What will be covered:** Resources assessment/gap analysis, developing a logic model & building coalition capacity to select evidence-based programs that meet community needs



*Finalized agenda & registration coming soon!*

# 2026 Coalition Leadership Institute (Part 2)

---

## Things to note for travel planning:

- ▶ We will not be holding lodging blocks in nearby hotels.
  - ▶ It is the responsibility of each site to call nearby hotels and inquire about per-diem room availability.
  - ▶ Most hotels in the area are about 12-15 minutes away from the venue – Tumwater and Lacey area.
- ▶ Breakfast & lunch will be on your own for each day.
  - ▶ Morning & afternoon beverage service (coffee, tea & hot water) will be provided on Day 2 and Day 3.
  - ▶ Evergreen State College has an on-campus cafeteria, The Greenery, and café, The Drop, that will be open for attendees to purchase food and drinks. *Credit/Debit card transactions only, no cash.*
- ▶ Paid parking available on campus, \$6/day.
  - ▶ HCA will be paying up to 200 parking passes per day.
  - ▶ Parking will be paid on-site through a QR code via phone.



# Prevention Summit Updates (Part 1)

---

- ▶ *En Route Network* is the new vendor – listserv communications will be coming through their team!
- ▶ Save-the-date coming soon – October 27-29, 2026, at the *Hotel Murano* in Tacoma, WA
  - ▶ October 27 will be the Annual Prevention Provider Meeting & Summit pre-registration day
  - ▶ October 28-29 will be Prevention Summit Day 1 and Day 2



# Prevention Summit Updates (Part 2)

---

- ▶ Registration
  - ▶ Hoping to launch by late summer/early fall
- ▶ Call for Presentations/Speakers
  - ▶ Hoping to launch late spring/early summer
- ▶ Coming soon! 2026 graphic web banner & virtual meeting backgrounds will be uploaded to the Summit website.
  - ▶ Email announcement sent through listserv when it's live.
- ▶ Reach out to [contactus@preventionsummit.org](mailto:contactus@preventionsummit.org) for any questions/concerns!

# Prevention Summit Updates (Part 3)

---

- ▶ The Prevention Awards of Excellence nomination form to recognize outstanding prevention professionals/organizations from the past year is in the process of being finalized!
- ▶ We are working with our vendor to create an online survey (similar to last year) and hope to have this complete within the next 1-2 months.
- ▶ When it is live, it will be sent out over the Prevention Summit Listserv and shared on Athena.

# School-Based Services through the Community Prevention and Wellness Initiative (CPWI)

---

Carola Brenes | School-Based Services Policy and Program Manager

Christopher Belisle | Prevention System Manager

HCA/DBHR

# School Based Services through CPWI

---



- ▶ Is a comprehensive and integrated model of school-based services that focuses on substance use prevention and other non-academic student supports in secondary schools.
- ▶ NEW this year: Based on the [SAHMSA model](#).
- ▶ Places trained Student Assistance Professionals in CPWI sites that provide multi-tiered services.

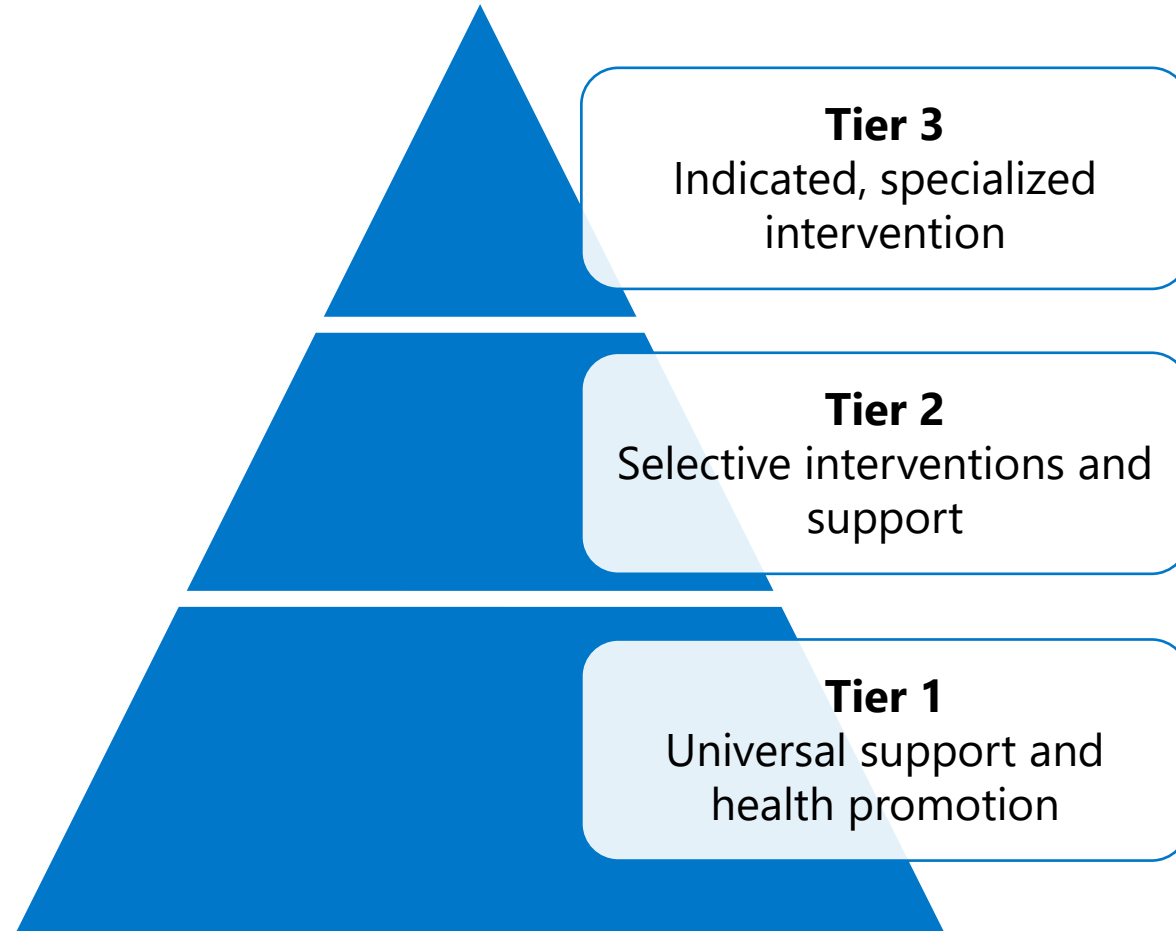
# HCA's partnership with the ESDs

---

- ▶ Contractual relationship with the 9 ESDs for the implementation of school-based services.
- ▶ Partnership through collaboration with the Association for the Educational Service Districts (AESD) and collaboration with the ESD Directors.
- ▶ Day-to-day contract management and TA with the Directors and SAP Coordinators / Supervisors.
- ▶ Additionally, as part of MIST, there is an ESD workgroup that includes ESD representatives from each of the 9 ESDs.

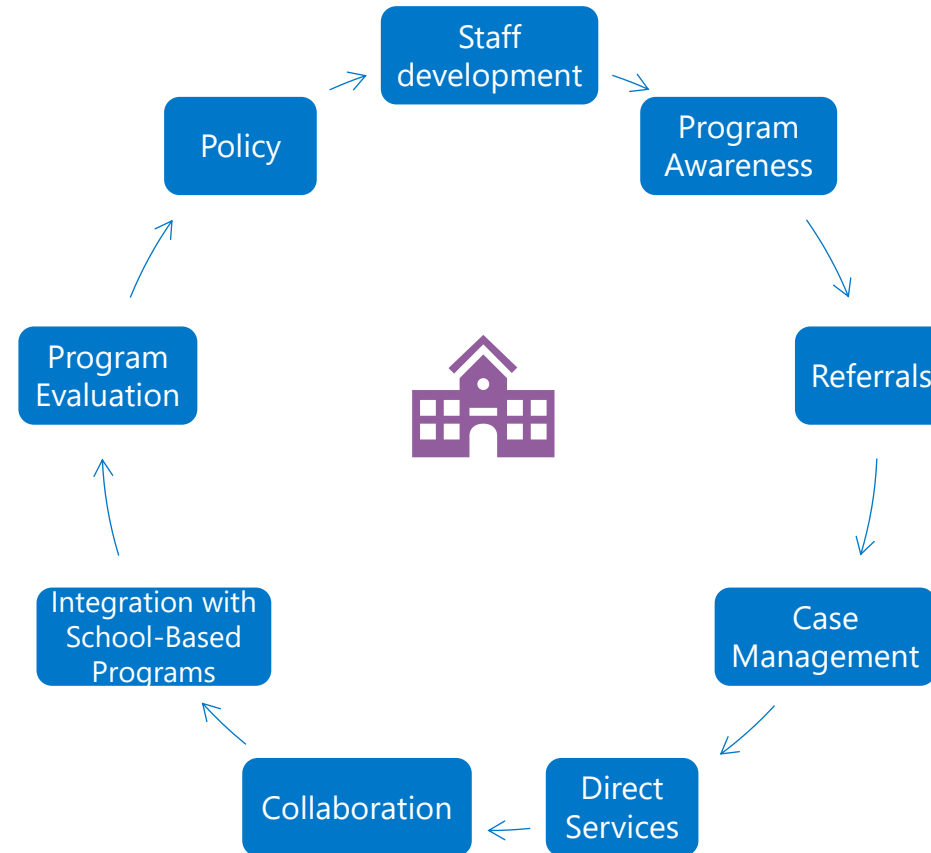
# Tiered Approach

---



# Core Components

---



# Site Overview

---

▶ 95 SAPs in 2024-25

School Level	Grades Levels	Number
Elementary schools	K – 6	1
Middle schools	5, 6, or 7 – 8	54
K-8 schools	K – 8	1
Junior high/senior high schools	6 or 7 – 12	12
K-12 schools	K – 12	3
High schools	9 – 12	61
Alternative schools	9 – 12	5
<b>Total</b>		<b>137</b>

# Key Deliverables

---

- ▶ Participate in creation of CPWI Strategic Plan and create a Service and Staffing Plan + Budget for school-based services.
  - ▶ The Budget is NEW this year after many years of negotiation.
- ▶ Attend Coalition meetings.
- ▶ Follow the CPWI Guide.
- ▶ Provide training / supervision to Student Assistance Professionals.
- ▶ Ensure SAPs obtain and maintain SUDP or CPP unless granted waiver.
- ▶ Secure local match.

# Budget

Select ESD/Contractor Name		YEAR ONE:					July 1, 2025 - June 30, 2026
		Date Budget Last Revised:					
Category & Line Item	Unspecified Fund Allocation (if funding sources not yet identified)	Select your funding source	Select your funding source	Select your funding source	Select your funding source	Select your funding source	SUBTOTAL (from HCA sources)
<b>Admin/Indirect</b>							
Allowable Admin Maximum Allocation (May be divided between contractor and subcontractors.	\$ -	\$ -	\$ -	\$ -	\$ -	\$ -	\$ -
<b>ESD Staff Salary &amp; Benefits (combined)</b>							
Student Assistance Professionals [List # of SAPs: _]	\$ -	\$ -	\$ -	\$ -	\$ -	\$ -	\$ -
SAP Supervisor(s)	\$ -	\$ -	\$ -	\$ -	\$ -	\$ -	\$ -
Director/Coordinating Staff	\$ -	\$ -	\$ -	\$ -	\$ -	\$ -	\$ -
<b>Subtotal</b>	\$ -	\$ -	\$ -	\$ -	\$ -	\$ -	\$ -
<b>Program Expenses</b>							
School-Based Prevention and Intervention Services							
Program Supplies (i.e. pens, notepads)	\$ -	\$ -	\$ -	\$ -	\$ -	\$ -	\$ -
Curriculum (i.e. Life Skills)	\$ -	\$ -	\$ -	\$ -	\$ -	\$ -	\$ -
Printing Costs	\$ -	\$ -	\$ -	\$ -	\$ -	\$ -	\$ -
Technology / Software	\$ -	\$ -	\$ -	\$ -	\$ -	\$ -	\$ -
Occupancy	\$ -	\$ -	\$ -	\$ -	\$ -	\$ -	\$ -
Training/Conference [insert name] (i.e. registration, travel)	\$ -	\$ -	\$ -	\$ -	\$ -	\$ -	\$ -
<b>Subtotal</b>	\$ -	\$ -	\$ -	\$ -	\$ -	\$ -	\$ -
<b>Other Staff/Program Needs</b>							
Sub-Contract with [insert name]	\$ -	\$ -	\$ -	\$ -	\$ -	\$ -	\$ -
Sub-Contract with [insert name]	\$ -	\$ -	\$ -	\$ -	\$ -	\$ -	\$ -
<b>Subtotal</b>	\$ -	\$ -	\$ -	\$ -	\$ -	\$ -	\$ -
<b>Travel</b>							
Assorted Travel (not accounted for above)							
Local mileage	\$ -	\$ -	\$ -	\$ -	\$ -	\$ -	\$ -
Overnight travel (mileage, per diem, lodging, etc.)	\$ -	\$ -	\$ -	\$ -	\$ -	\$ -	\$ -
Required: Day 1 of Coalition Leadership Institute (mileage,	\$ -	\$ -	\$ -	\$ -	\$ -	\$ -	\$ -
Required: Provider Meeting (mileage, per diem, lodging, et	\$ -	\$ -	\$ -	\$ -	\$ -	\$ -	\$ -
Optional placeholder: Other expense	\$ -	\$ -	\$ -	\$ -	\$ -	\$ -	\$ -
<b>Subtotal</b>	\$ -	\$ -	\$ -	\$ -	\$ -	\$ -	\$ -
<b>CATEGORY</b>	<b>Unspecified Fund Allocation</b>						<b>SUBTOTAL (from HCA sources)</b>
Admin/Indirect	\$ -	\$ -	\$ -	\$ -	\$ -	\$ -	\$ -
Salary & Benefits	\$ -	\$ -	\$ -	\$ -	\$ -	\$ -	\$ -
Program Expenses	\$ -	\$ -	\$ -	\$ -	\$ -	\$ -	\$ -
Travel	\$ -	\$ -	\$ -	\$ -	\$ -	\$ -	\$ -
<b>TOTALS</b>	\$ -	\$ -	\$ -	\$ -	\$ -	\$ -	\$ -
Type your allocated budget amount by funding source in these cells	\$ -	\$ -	\$ -	\$ -	\$ -	\$ -	\$ -
							\$ -



# Service & Staffing Plan

SAP Name, Credentials	CPWI Site	School(s) & Grades Served	Hours Worked Per Day	Working Days Per Year	Prevention Education Curriculum	Amount of match secured	Was match collected?	Performance Measure C
<i>If vacant, leave blank. Add additional rows as needed.</i>	<i>Which district or community does the SAP serve?</i>	<ul style="list-style-type: none"> <li>List each school served.</li> <li>If multiple, <b>bold</b> the main location(s). "Main" means they serve on a regular, scheduled basis (1 day a week is a "main" site).</li> <li>List grades served at each.</li> </ul>	<i>Hours the SAP works an average day.</i>	<i>How many working days a year are in "base pay?"</i>	<i>What is the classroom curriculum used at each site? Refer to the <a href="#">Excellence in Prevention</a> page. If not on the registry, <u>indicate an exception is requested.</u></i>	<i>Match amount planned. A minimum of \$17,100 <u>required per site.</u></i>	<i>Click yes or no. "Yes" also applies to an agreement in place to receive match at a later date.</i>	<b>For DBHR Use Only</b> <i>This section is to be completed by DBHR after submission.</i>
<i>Example: Abby Apple, CPP</i>	<i>MyTown</i>	<b>MyTown MS (6-8)</b> <i>MyTown HS (9-12)</i>	<i>8 hours</i>	<i>180 days</i>	<i>Life Skills Training: Botniv Middle School</i>	<i>\$17,100</i>	<input checked="" type="checkbox"/> Yes <input type="checkbox"/> No	<i>Enrollment:</i> <i>Measure:</i> <i>50 <u>Fulls</u> or 15% = __.</i>
1.					Choose an item.	\$	<input type="checkbox"/> Yes <input type="checkbox"/> No	<i>Enrollment:</i> <i>Measure:</i> <i>50 <u>Fulls</u> or 15% = __.</i>
2.					Choose an item.	\$	<input type="checkbox"/> Yes <input type="checkbox"/> No	<i>Enrollment:</i> <i>Measure:</i> <i>50 <u>Fulls</u> or 15% = __.</i>

# Service & Staffing Plan

Coordinating Staff Name, Credentials	Title/Role	Coordination Strategies/Activities	Other (optional)	Working Days Per Year	FTE Billed to SAPISP
<i>If vacant, leave blank. Add additional rows as needed. Include all coordinating staff that bill for services.</i>	<i>What is their job title or SAPISP role?</i>	<ul style="list-style-type: none"> <li>• Use the dropdown to indicate <u>which</u> are conducted by each <u>staff</u>.</li> <li>• For staff conducting multiple activities, copy and paste the dropdown.</li> <li>• If "other," please describe in the optional column to the right.</li> </ul>	<i>Additional information relevant to the service and staffing plan, as needed.</i>	<i>How many working days a year are in "base pay?"</i>	<i>Provide the percentage of this staff's FTE that is billed to SAPISP.</i>
<i>Example: Opal Orange, CPP</i>	<i>Prevention Manager (SAP Supervisor)</i>	<i>New Staff Orientation Staff Start-Up Daily Operations and Supervision LGAN Data Pull Professional Development for Staff Other:</i>	<i>This staff is a new Supervisor and is still going through onboarding.</i>	<i>220 days</i>	<i>1 FTE</i>
1.		Choose an item.			
2.		Choose an item.			

# Key Deliverables

---

- ▶ Ensure implementation of the Healthy Youth Survey (HYS).
- ▶ Complete site visits at each school receiving SAP services.
- ▶ Provide classroom education through a minimum of one (1) implementation of an approved Evidence Based Program (EBP).
  - ▶ Note: This is currently the only EBP requirement. Prior to this school year, Project SUCCESS as a whole was considered an EBP. As we moved to the SAMHSA model, we no longer consider the whole “model” or “framework” an EBP and instead treat EBP status more similar to what you see with CPWI Coalitions
- ▶ Meet data reporting requirements.

# Future Goals

---

A few things we're working on now and over the next few years.

- ▶ Refining EBP requirements and identifying additional EBP options.
- ▶ Reviewing and updating the Logic Model.
- ▶ Transitioning reporting to Minerva (from the LGAN system) + Training/TA.
- ▶ Reviewing pre and post test questions.
- ▶ Discussing evaluation goals.
- ▶ Further integration of TO1 and TO2.
- ▶ Developing policies and procedures regarding contract deliverables.
- ▶ And more!

# Outcomes

---

As a result of participating in the program, students have:

- ▶ Strengthened social skills
- ▶ Abstained from antisocial behaviors
- ▶ Abstained from using alcohol and other drugs
- ▶ Reduced the severity of their substance use



# 2024-25 school year: Service delivery

Category	Total activities
Universal Services (Tier 1)	3,612
• Awareness	2,003
• Education	445
• Curriculum	122
• Peer (youth leadership)	383
• Planning	659

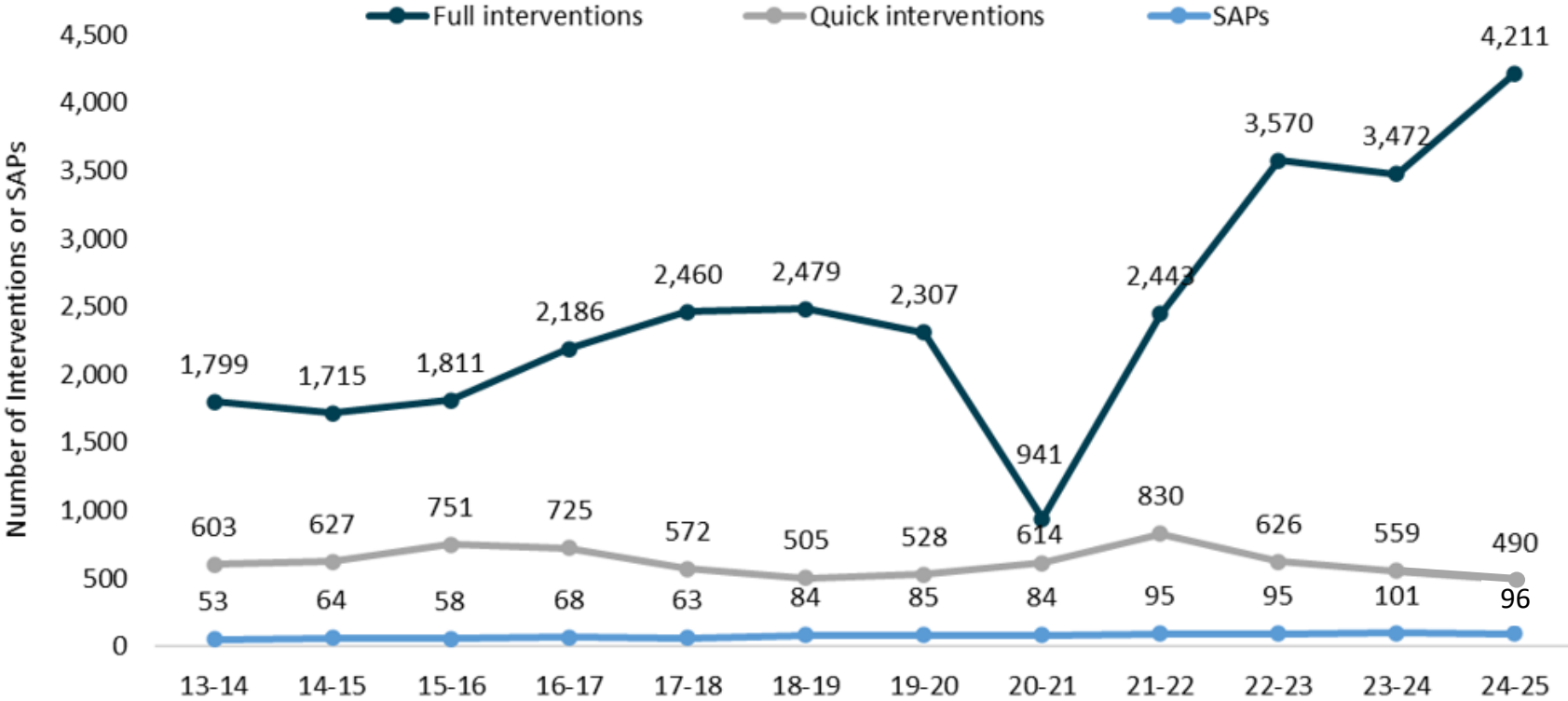
# 2024-25 school year: Service delivery

---

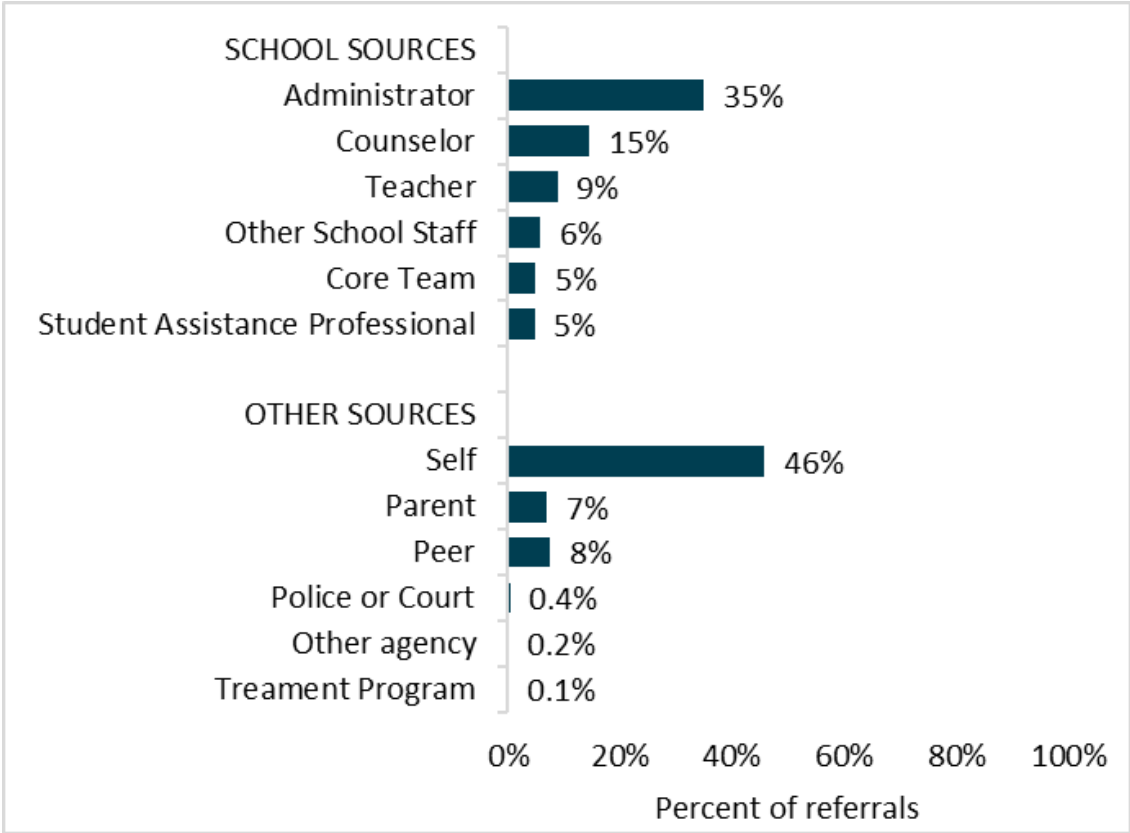
Category	Total activities
Selective/Indicated Services (Tier 2 or 3)	4,701
• Quick interventions*	490
• Full interventions	4,211
• Full interventions + substance use reduction goal	2,165

*\*Quick interventions are not always entered into the system*

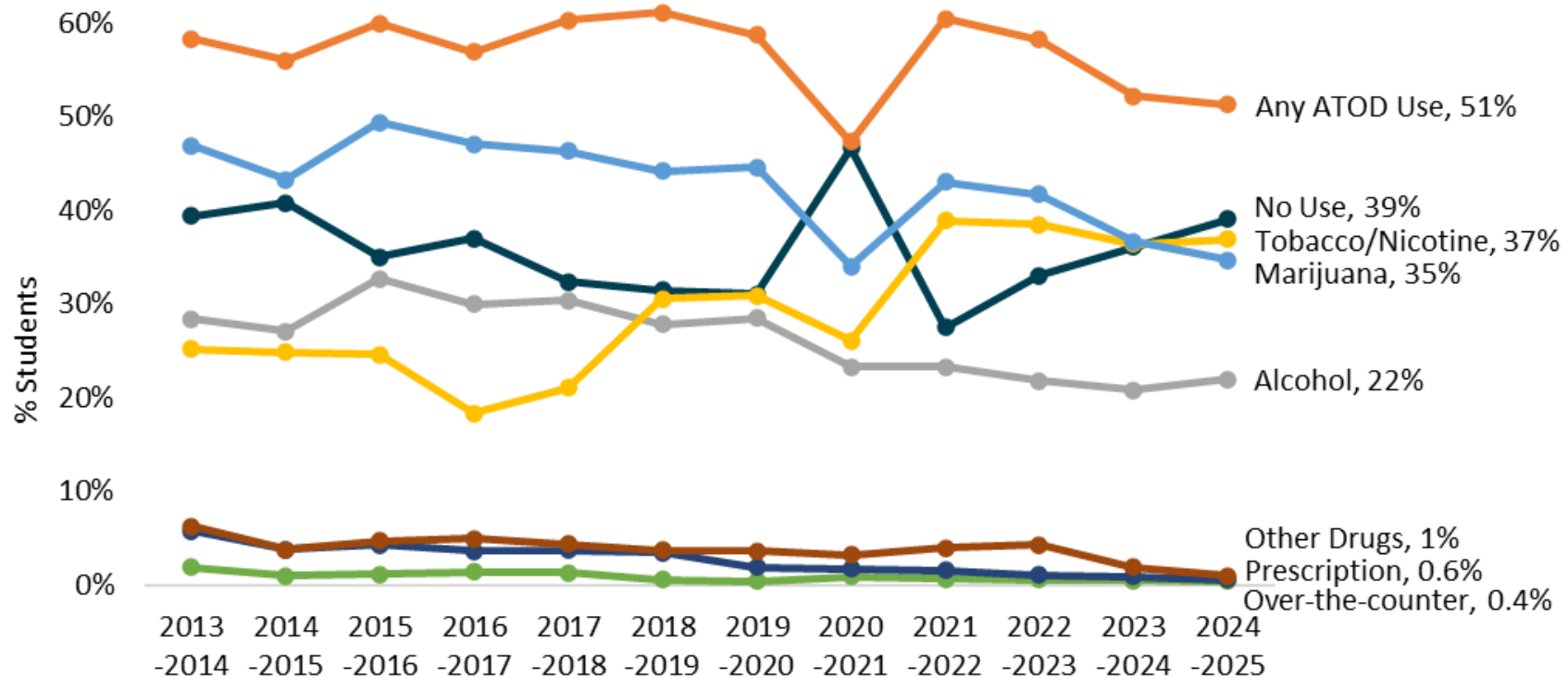
# 2024-25 school year: Students served



# 2024-25 school year: Referral sources

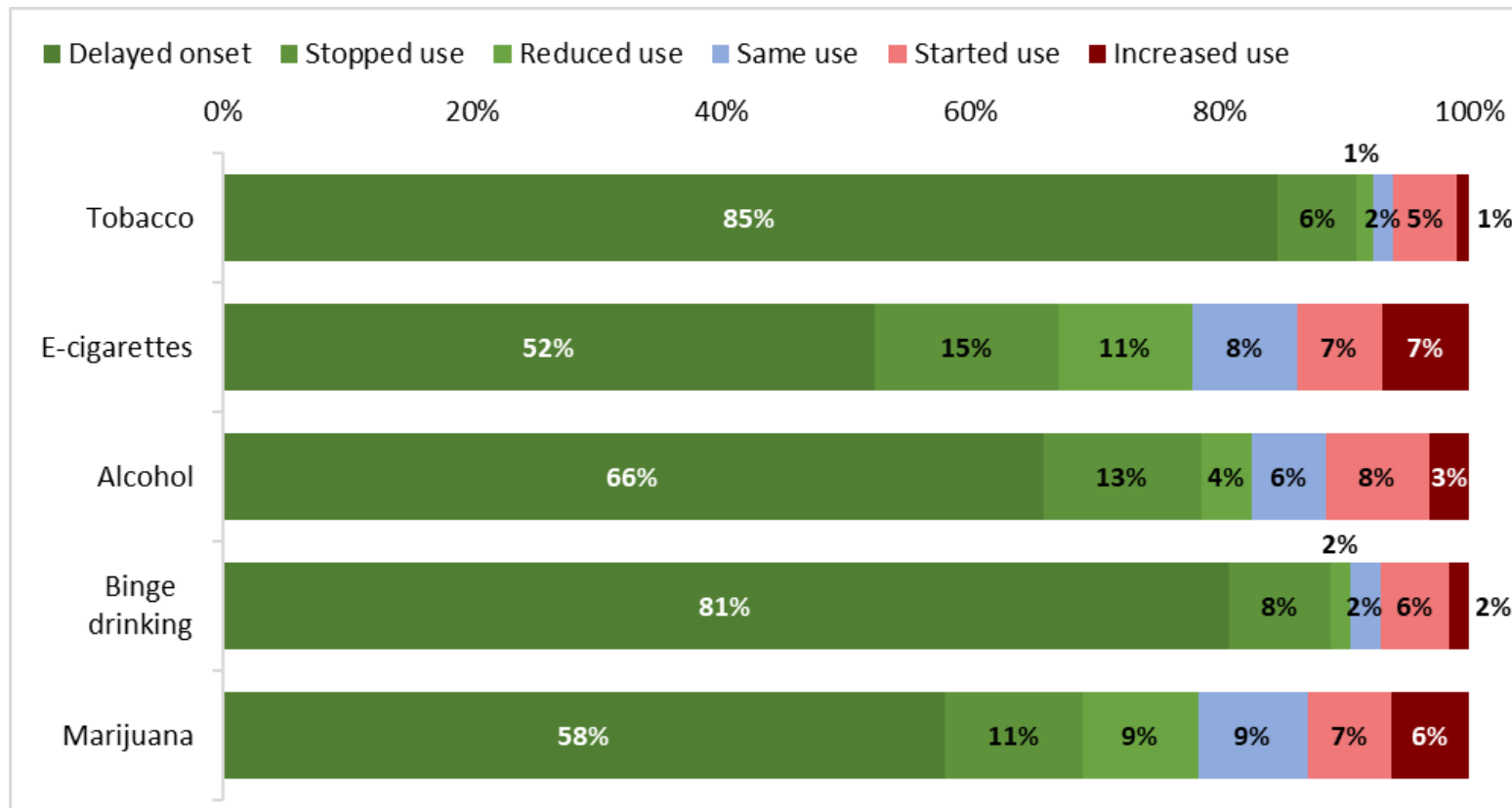


# Substance use reported at intake



# 2024-25 school year: Substance use

Percent of Students by Substance Use Categories Change in 2024-2025



# 2024-25 school year: Other outcomes

---

Topic	Pretest	Post-test
Hope Scale: I am doing pretty well	32%	45%
Hope Scale: When I have a problem, I can come up with lots of ways to solve it.	25%	34%
Think it's harmful to vape daily or nearly every day	74%	81%
Think it's harmful to try marijuana once or twice	38%	50%
Think it's harmful to take 1-2 drinks nearly every day	68%	75%

# Performance Measure A

---

- ▶ A minimum of 60% of the students who participate in the program (selected/indicated) must complete both a pre-test and a post-test.
- ▶ **82%** of participants received a paired pre-test and post-test



# Performance Measure B

- ▶ A minimum of 85% of the students with a pre-test and post-test who participated in the program must have the following outcomes on each of the following 3 indicators:
  - ▶ i) Overall, how important has this program been to you? Very important or pretty important.
  - ▶ ii) Are you glad you participated in this program? Yes, or YES!
  - ▶ iii) Are you more likely to attend school because of this program? Yes, or does not apply to me
- ▶ **96%** of participants said they were glad they participated in the program.
- ▶ **93%** of participants said the program was important or very important to them.
- ▶ **90%** of participants said they were more likely to attend school because of the program.

# Performance Measure C

---

- ▶ A minimum of 50 students or 15% of the student population served with full interventions.
- ▶ Last year, **61** sites met/exceeded the performance measure. We are excited to see this improvement from past years and continue working with ESD's around this measure.

# Questions?

# April is Child Abuse Prevention Month

---

Isaac Wulff | Prevention System Manager | HCA/DBHR



# April: Child Abuse Prevention Month



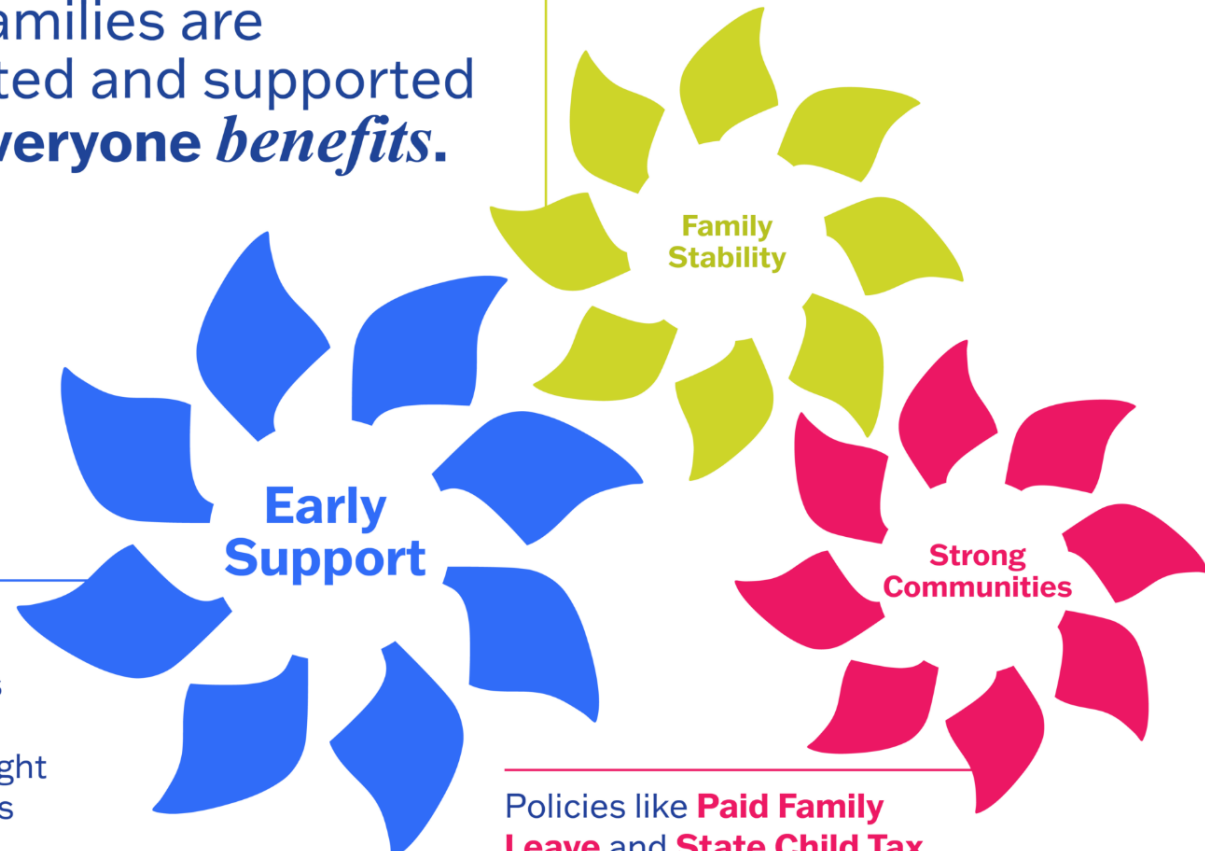
Washington State Department of  
**CHILDREN, YOUTH & FAMILIES**

# Pinwheels of **POSSIBILITY**

CAP MONTH 2026

When families are connected and supported early, *everyone benefits.*

Families with young children are **27% less likely** to experience homelessness when they participate in home visiting support.



**48%** fewer infants are born at low birth weight when families receive early home visiting support.

Policies like **Paid Family Leave** and **State Child Tax Credits** reduce reports of neglect and abuse.



Washington State Department of  
**CHILDREN, YOUTH & FAMILIES**

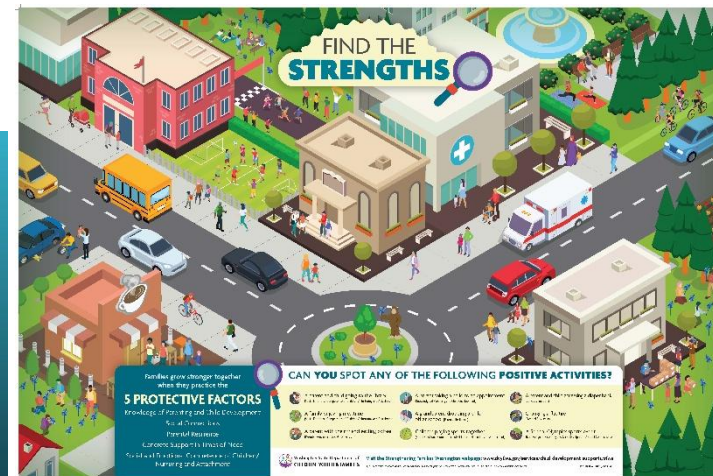
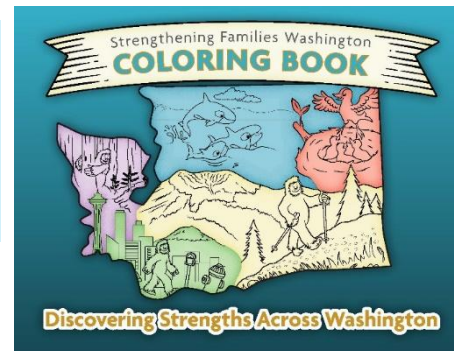
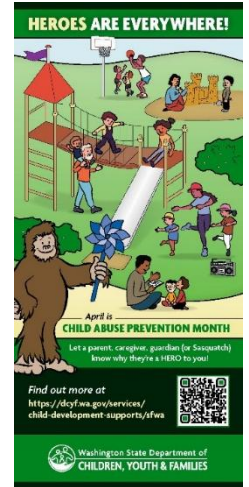
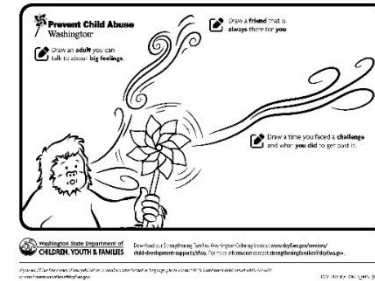


**Prevent Child Abuse  
Washington**  
Centering families through every turn.

# CAP Month Activities & Resources



- [Pinwheels & Coloring Books Ordering through DES](#)
- Email: [Strengtheningfamilies@dcyf.wa.gov](mailto:Strengtheningfamilies@dcyf.wa.gov) for the following materials:
  - Stickers
  - Yard Signs
  - Posters
  - Activity Packets
- April 10 is Wear Blue Day



Washington State Department of  
**CHILDREN, YOUTH & FAMILIES**

Please email: [Strengtheningfamilies@dcyf.wa.gov](mailto:Strengtheningfamilies@dcyf.wa.gov) to order materials!

# Child Abuse Prevention Month – Ordering Info

- **A few things to note:**
  - You will need to create a MyPrint account to purchase the pinwheels.
  - If your organization is tax exempt, there is a tax-exempt button on the website as well.
  - If you are placing an order larger than 960 (four cases) please email us so we can support you in receiving the lowest cost possible.
  - You are able to place multiple orders at once as well and send to multiple recipients if needed.
  - Please reach out to [strengtheningfamilies@dcyf.wa.gov](mailto:strengtheningfamilies@dcyf.wa.gov) if you have any questions or need help navigating the system.
- **The pricing this year will go as follows (excludes tax):**
  - 60 to 119 pinwheels - \$1.40 a piece
  - 120 to 179 pinwheels - \$1.22 a piece
  - 180 to 239 - \$1.16 - \$1.16 a piece
  - 240 or more - \$1.13 a piece
- **The proceeds from the pinwheels pay in part, for the publication and distribution of our many free materials.** This includes:
  - Many of the materials in our [Child Abuse Prevention Month Digital Media Kit](#)
  - [Have a Plan](#)
  - [Safe Sleep](#)



# Don't Sleep on Teen Gambling: An Essential Part of the New Prevention Landscape

---

Jeremy Whitaker, EdD, MPH | Problem Gambling Prevention Coordinator  
HCA/DBHR



# Problem Gambling for Youth and Young Adults

**Washington State Problem  
Gambling Program**

*Jeremy Whitaker, Ed.D, MPH  
Prevention Coordinator*

*Prevention Provider Meeting  
March 2026*

# Gambling is everywhere on sports

*This page may contain affiliate links. If you click and sign up, make a deposit, or place a wager, we may earn a commission at no additional cost to you.*

## Seahawks vs. Rams odds, prediction, spread, time: 2026 NFC Championship Game picks from proven computer model

SportsLine's model has revealed its Los Angeles vs. Seattle picks for their NFC Championship Game 2026 matchup in the 2026 NFL playoffs



By [Ross Kelly](#) Jan 25, 2026 at 5:22 pm ET • 3 min read



<https://www.cbssports.com/nfl/news/seahawks-rams-odds-prediction-time-spread-2026-nfc-championship-game-picks-nfl-lines-best-bets/>

# And in the News...



WASHINGTON STATE

## Hit 5 lottery ticket wins jackpot in Western Washington. Here's where it was sold


January 26, 2026 at 10:36 AM

WASHINGTON STATE

## Gambler scores 'huge win' at Western Washington casino. Here's how much

By Julia Hawkins

Updated January 28, 2026 3:37 PM |  Gift Article

 Read today's Edition



Log In | [Subscribe](#)



[NEWS](#) [SPORTS](#) [GOVERNMENT](#) [RESTAURANTS](#) [OPINION](#) [GAMES](#) [OBITUARIES](#) [FINANCE](#) [CLASSIFIEDS](#) [BEST OF SOUTH SOUND](#)

49°F

WELCOME OFFER **\$1.99 FOR 1 MONTH** Unlimited local reporting, when you need it.

[SUBSCRIBE NOW](#)

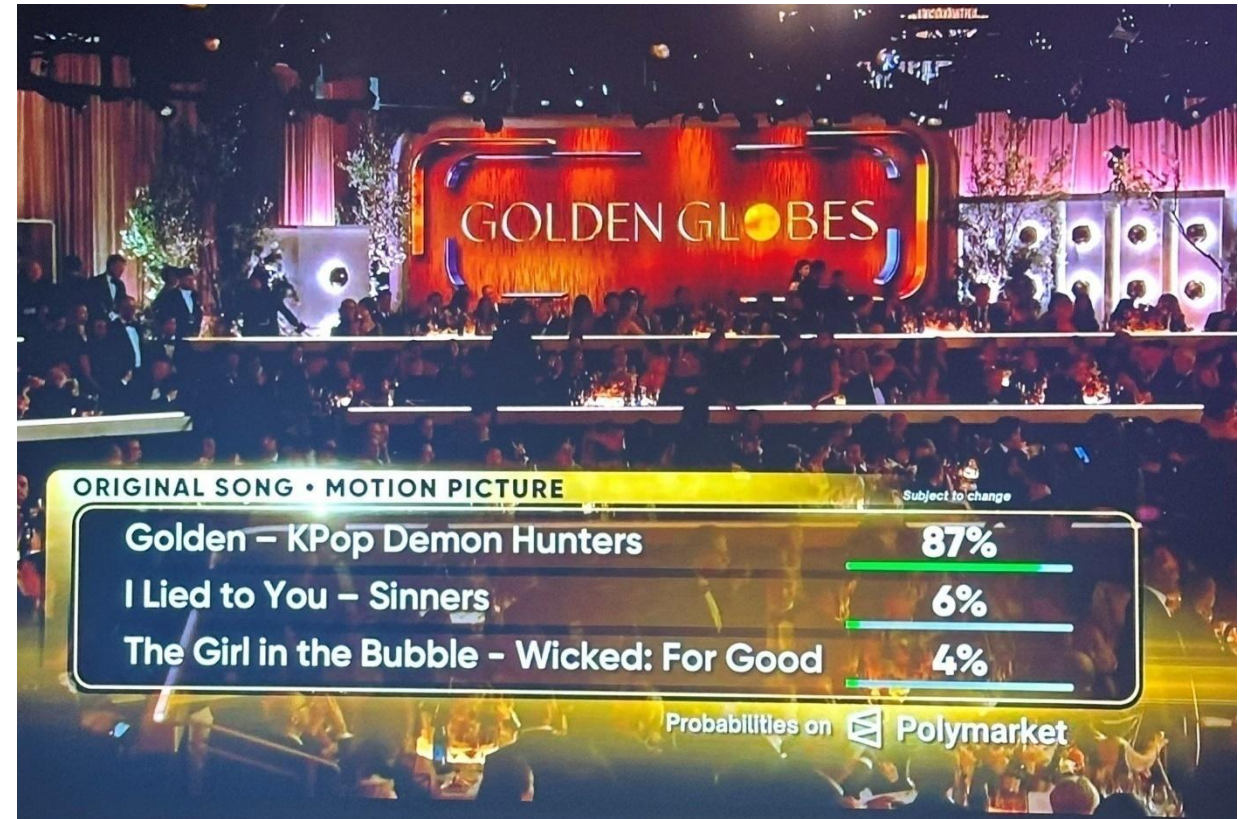
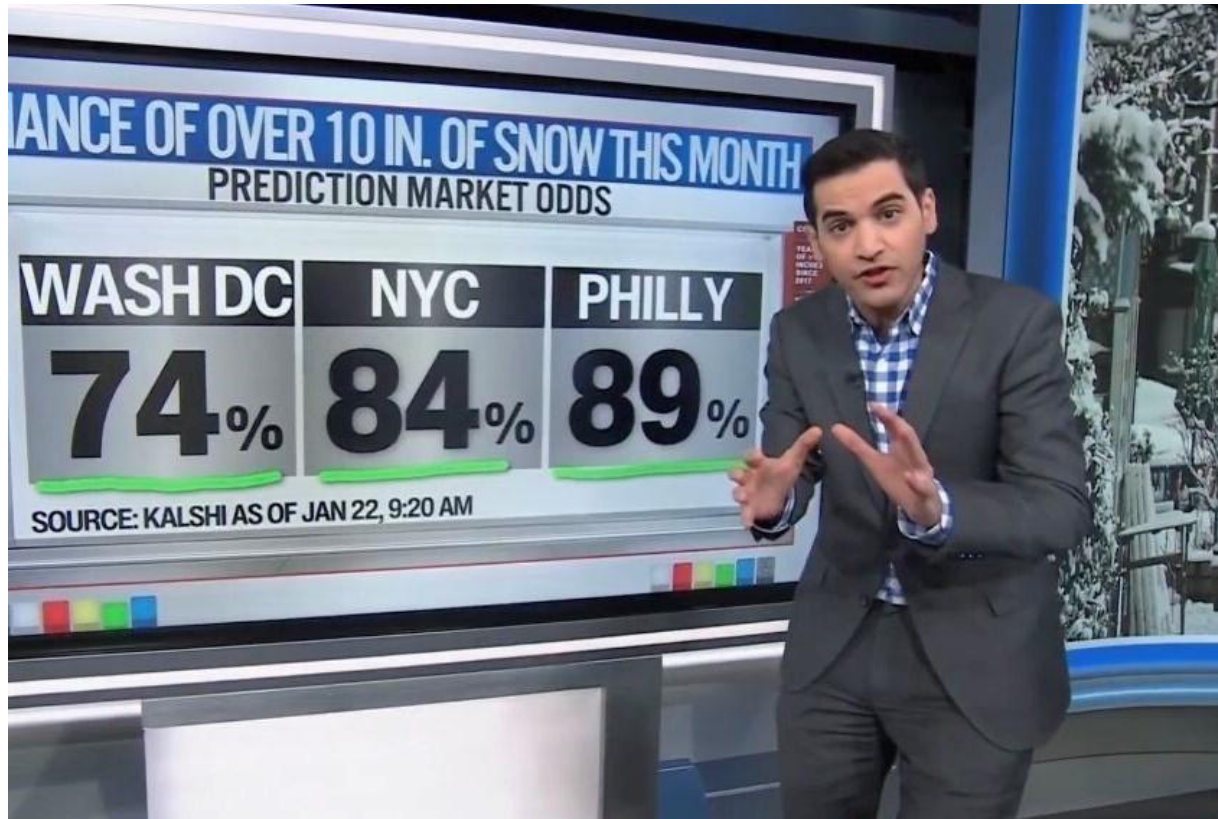
LOCAL

## Gambler turns \$19.80 into big jackpot win in Washington. 'These games are hot!'

By Sara Schilling

Updated December 15, 2025 8:44 AM |  Gift Article

# And Regular Programs



# Our Conversation

---

## ▶ **The Problem**

- ▶ Gambling in Washington
- ▶ Co-Occurring Disorders

## ▶ **Assessment, Treatment, and Recovery**

- ▶ Screening & assessment tools
- ▶ Treatment options in WA State

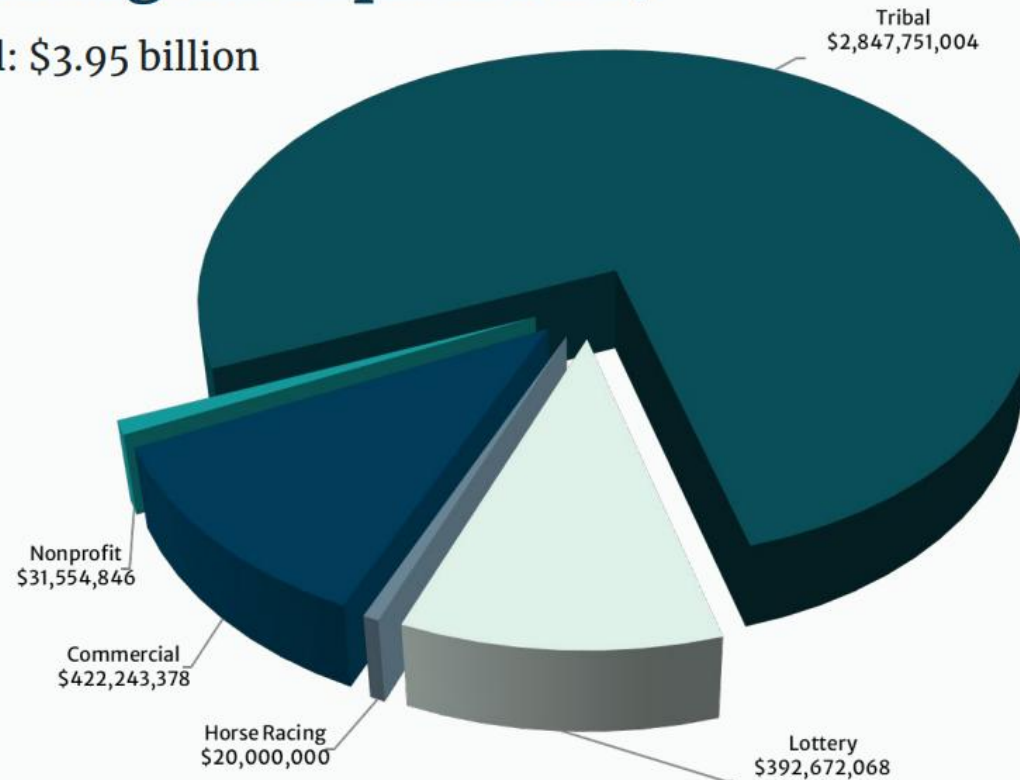
## ▶ **Prevention**

## ▶ **Q/A**

# SFY 2024 – Net gambling receipts (legal)

## Net Gambling Receipts: FY24

Total: \$3.95 billion



Data Sources: Mandatory Quarterly Filings (Nonprofit, Commercial), Horse Racing Commission, Washington's Lottery, Tribal net receipts (estimated, class III only, as authorized in Tribal Compacts)

# Gambling in Washington

---

- ▶ Four-fifths (**80%**) of adults who gambled were not at risk for problem gambling
- ▶ Among the one-fifth of adults who gambled (**20%**)
  - ▶ **16.5% were at an increased risk (risk not zero)** for problem gambling (estimated 420,000 adults)
  - ▶ **3.5% were at a moderate-to-severe risk** for problem gambling/Gambling Disorder (estimated 90,000 adults)
- ▶ 10.9% of 8<sup>th</sup> graders reported gambling (2023)
- ▶ Youth & young adults at twice the risk for problem gambling (6-8%)



# What do we know about Problem Gambling?

---

- ▶ Addiction with the highest suicide risk
  - ▶ Suicidal ideation (30-33%)
  - ▶ Suicide attempts (10.4%)
- ▶ One person with gambling addiction impacts ~6 others
- ▶ Populations at higher-risk: Youth, Young Adults, College Students (especially athletes) Older Adults, Veterans, Black, Latino, Indigenous, and Asian communities
- ▶ 18% of college students report gambling within the past 7 days

# Problem Gambling & Co-Occurring Disorders

---

- ▶ Studies show that Individuals diagnosed with a gambling disorder are also likely to have other behavioral health issues:
  - ▶ Studies show 90-94% of problem gamblers have a co-occurring disorder
  - ▶ Substance Use
  - ▶ Mental health
- ▶ Important to treat all co-occurring disorders (also – gambling sometimes becomes the 'new' addiction)
- ▶ Important to **Screen for** Problem Gambling

# Screen & Refer

---

- ▶ All students should be screened at intake
  - ▶ Testing leads to treatment!
- ▶ There are several brief screening tools (2-4 questions)
  - ▶ Lie-Bet, SOGS, SBIRT for gambling
  - ▶ Brief Biosocial Gambling Screen (BBGS)
  - ▶ NODS/NODS-Clip/NODS-Perc
- ▶ Penn State CCAPS-Screen added gambling question in 2025
  - ▶ <https://ccmh.psu.edu/ccaps-screen>

# Washington Treatment Options

---

- ▶ Private insurance
- ▶ Apple Health
- ▶ State program at HCA
- ▶ Find Providers with Evergreen Council on Problem Gambling
  - ▶ [evergreencpg.org](http://evergreencpg.org)
- ▶ GamFin - financial counseling



Prevention

# Problem Gambling Awareness Month

Washington's Lottery  
2h · 🌐  
Someone is available 24/7. Call, text or chat any time.

**IT'S YOUR LIFE**

**IT'S YOUR TIME**

Connect With the Help You Need  
To Live the Life You Want

Help Starts Here.  
24/7 Problem Gambling Helpline:  
• Call or Text **1-800-547-6133**  
• Chat at [evergreencpg.org](https://evergreencpg.org)



EVERGREEN  
council on problem gambling

HCA Washington State Health Care Authority  
March 6 at 12:00 PM · 🌐

We talk to our kids about drugs and alcohol — but what about gambling? Research shows that early exposure to gambling is linked to higher rates of anxiety, depression, and addiction later in life. This March, the Evergreen Council on Problem Gambling and WA State Health Care Authority are teaming up to change that. <https://loom.ly/fJnoXic>

Did you know teens and young adults under 25 who gamble are twice as likely as adults to develop a gambling addiction? And the exposure often starts way earlier than you'd think — through video game loot boxes, sports betting ads, and apps that make wagering feel normal. March is Problem Gambling Awareness Month. Let's start the conversation.

**Have you talked to your kids about gambling?**



HCA


HCA Washington State Health Care Authority  
March 17 at 12:00 PM · 🌐

🏀 Bracket busted by halftime? Same, bestie. Same. 🤔

Fun fact: Most people who fill out brackets lose — and that's totally okay! The real prize is the trash talk with your friends.

But if the losses are starting to sting more than they should, or you're chasing that money back, that's worth paying attention to. 🙄

Need to talk? Call or text the Problem Gambling Helpline: 1-800-547-6133. It's free, confidential, and judgment-free. ❤️



**Losing your bracket is normal.  
Losing the fun isn't.**

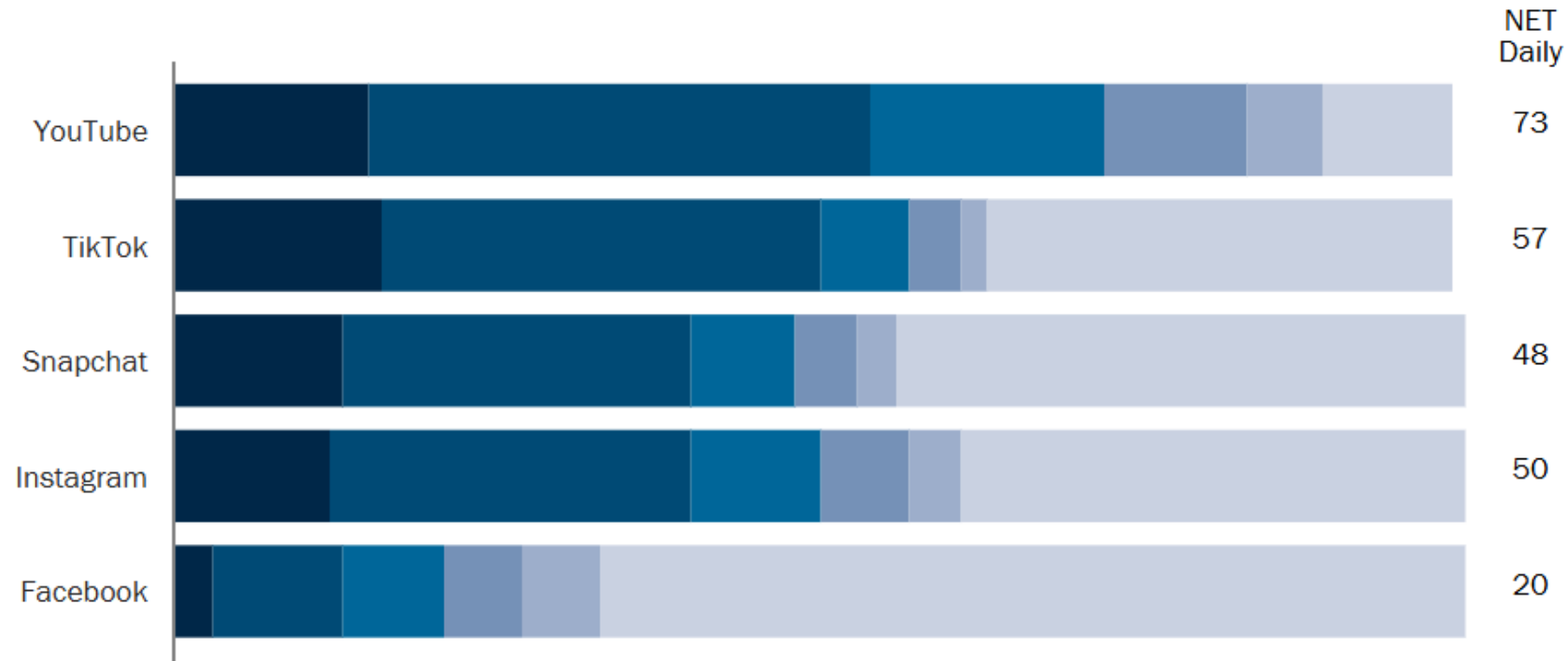
# Youth and Screen Time

---

- ▶ From 2015-2021, teens averaged 8 hours and 39 of media use per day (boys higher)
- ▶ Teens receive 237 phone notifications per day (2023)
- ▶ Most used social media are YouTube and TikTok
  - ▶ Teens with TikTok spend 1 hour 45 minutes per day
- ▶ 85% of teens report playing video games (boys higher)
  - ▶ 72% report it as a way to spend time with others
- ▶ sadf

*% of U.S. teens ages 13 to 17 who say they visit or use the following apps or sites ...*

■ Almost constantly ■ Several times a day ■ About once a day ■ Several times a week ■ Less often ■ Do not use



Note: Figures may not add up to NET values due to rounding. Those who did not give an answer are not shown.

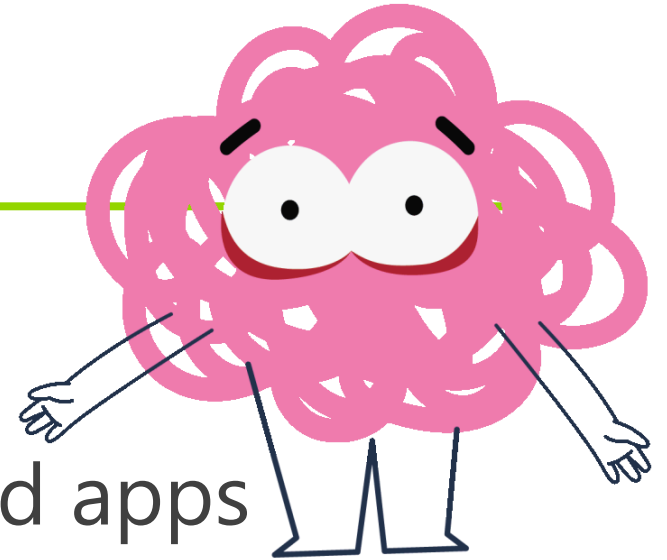
Source: Survey of U.S. teens conducted Sept. 18-Oct. 10, 2024.

**PEW RESEARCH CENTER**

# Take Back Control

---

- ▶ New campaign aimed at teens (13-17)
  - ▶ Secondary audience of 18-24
- ▶ Focus on gambling elements in games and apps
- ▶ Paid media, influencer, and user generated content
- ▶ Website is [www.dont-get-played.com](http://www.dont-get-played.com)
- ▶ Next campaign will be college-focused
  - ▶ Will build on this campaign



# Local Gambling Prevention Grants

---

- ▶ \$225,000 for local gambling prevention
  - ▶ Maximum \$50,000 per site
- ▶ Goal is integration of problem gambling prevention into existing prevention efforts
  - ▶ Must be an existing substance use prevention or tobacco/cannabis prevention grantee
- ▶ Selection completed March 6
  - ▶ Unite! Washougal; Skagit Hospital District #304; Grant County Fire District #7; ESD 101 (Spokane); Prosser Thrive

# Curriculum – In Progress

---

- ▶ Development of curriculum for middle and high school for gambling
  - ▶ Three modules of 45 minutes each
- ▶ Focus on mental health and social-emotional learning objectives
- ▶ Collaboration with Evergreen Council on Problem Gambling
  - ▶ Youth Have the Power (<https://youthhavethepower.org/>)
- ▶ Roll out Summer/Fall 2026
  - ▶ SAP, OSPI, ESD 101

# What Can Your Organization Do?

---

- ▶ Follow trends on gambling and gaming – Prediction markets, social casinos, gacha systems in games
  - ▶ Avoid demonizing video games, particularly team/social games
- ▶ Educate parents – Screen time, apps, microtransactions, and websites
- ▶ Screening for gambling in all behavioral health settings
- ▶ Encourage schools and colleges to promote gambling prevention campaigns
- ▶ Add gambling as an agenda item at your coalition meetings
- ▶ Despite seeming shy, the gambling prevention coordinator is happy to provide technical assistance



## Contact Me!

---

**Jeremy Whitaker, Problem Gambling  
Prevention Coordinator**

[jeremy.whitaker@hca.wa.gov](mailto:jeremy.whitaker@hca.wa.gov)

**Training, presentations, technical assistance, and  
inclusion for both prevention and mental health  
treatment**

# Q&A

# Prevention Promotion Section Budget

Question	Answer
Did we get any understanding of why the MPH dollars were transferred to DOH?	Not really- we have heard there were some interests having DOH responsible for suicide prevention but there's no clear clarification on that
When will the funding transfer?	July 1, 2026 – It's encouraged for all to stay in contact with your Contract managers
What was the "All provider meetings" and how do we get added to that or find out about it?	The reference was these Prevention Provider Meetings which include the pre-conference Provider Meeting as part of Prevention Summit.
Is DBHR aware that other states use federal prevention dollars, including SOR, to fund upstream mental health and suicide prevention like Sources of Strength?	Yes, we know that other states may use their federal funding in different ways. We have a state opioid and overdose response plan in our state where may key partners come together to guide how our state allocates / implements opioid dollars and we also have our current system infrastructure for CPWI / CBO grantees. Exploring more flexibility, continuing our emphasis on dual outcomes, etc. is all items we are continuing to put energy and effort into AND we continue to have focus on simply ensuring we are able to maintain funding at this time for what we currently offer.

# Prevention Promotion Section Budget

---

Question	Answer
Did we get any understanding of why the MPH dollars were transferred to DOH?	There is not a deep understanding of the transfer of MHPP funds to DOH but we continue to work with leadership across both agencies to partner / collab and limit impact as much as possible.
Will the MPH transfer impact current or future CPWI awards?	This remains unknown but currently, CPWI does not receive direct MHPP funds.
Do you have suggestions on how best to follow the investments? Specifically curious about the crisis facilities roadmap and what entity is responsible for that project.	To follow the investments, subscribing to the Gov's website / updates is helpful as well as following OFM's information shared on their page at Budget - Office of Financial Management <a href="https://ofm.wa.gov/budget/">https://ofm.wa.gov/budget/</a>
What is the timeline of the MPH transfer to DOH?	We don't quite fully know the timeline of the MHPP transfer yet. Please stay in touch with your contract manager. Officially the funds transfer SFY 2027 (July 1, 2026) but there are conversations happening about what the shift looks like / timeline looks like for transfer of services, etc.

# Legislative Session

Question	Answer
Any new rules on retail alcohol placement?	<p>Current rule making around alcohol placement is lead by LCB. More information about this process can be found at <a href="https://lcb.wa.gov/laws/current-rulemaking-activity#:~:text=Retail%20Alcohol%20Product%20Placement">https://lcb.wa.gov/laws/current-rulemaking-activity#:~:text=Retail%20Alcohol%20Product%20Placement</a>.</p> <p>For specific questions, please reach out to the LCB public health education liaison, Kristen Haley at <a href="mailto:kristen.haley@lcb.wa.gov">kristen.haley@lcb.wa.gov</a></p>

# Statewide Updates

Question	Answer
HYS 2027 and beyond- Do you anticipate any additional questions related to social media and or isolation?	<p>For HYS27 we are not anticipating major edits to questions, like adding new ones. However, for future cycles, we'll continue to monitor trends on the existing internet and social media use questions to assess need.</p> <p>If you have particular content needs in mind (like aspects of isolation to focus on or examples from other states), please feel free to send to the HYS Planning Committee at our feedback survey link: <a href="https://lgan.qualtrics.com/jfe/form/SV_5dUI6jnnaNgM30a">https://lgan.qualtrics.com/jfe/form/SV_5dUI6jnnaNgM30a</a></p>
Are all the additional funding requests that were granted available on April 1?	April 1 is the start date for Exp. Request A&R / FSI Docs but you may receive them in the week after. We wanted you to be aware of start date so you can get started

# Workforce Development

Question	Answer
Is a similar strategic planning training series going to be required every 2 years? It would be so appreciated if there were two training paths. One for newer prevention professionals or folks who are interested in refreshers, and for more experienced providers.	Yes! Every other year there will be the training series. We have been exploring what you suggest (for all of the training offerings we provide including those at Summit) and are trying to build that in more and more. That being said, we are offering flexibility for you to work with your manager to request excusal from a training as appropriate. For example, if you have CPP, are experienced manager, have successfully written a Plan, etc. you may not be required to attend the basic risk and protective factors training every other year. That being said, we've heard from some experienced coordinators they like the refresher and like having a free training to support their CPP renewal.
Did you say if/when the recording will be available for the early March training that occurred?	The March training materials should be live end of this week / early next week!
Is there an age minimum for the adult advisor? (SYF)	Adult advisor must be 19 years of age or older and at least 3 years older than the youth being advised/chaperoned (whichever is greater)

# Workforce Development

Question	Answer
Is there a location set for CLI yet?	Yes! Evergreen State College – Evans Hall
Just state government vehicles?	I do believe it is just state vehicles BUT we will get more clarity as we get close on the parking, which would include parking map and other items
Do we know Prevention Summit dates yet?	Yes! October 27-29, 2026. <ul style="list-style-type: none"><li>• October 27 : Annual Prevention Provider Meeting &amp; Summit pre-registration day</li><li>• October 28-29 : Prevention Summit Day 1 and Day 2</li></ul> Mark your calendar and we look forward to seeing you there!

# School-Based Services Through the CPWI

Question	Answer
<p>Did I hear you say there is an alternative to schools' budgets providing matching funds for the SAPs?</p>	<p>Match funds at the 20% per the TO 02 Contract terms must follow the RCW which states it must be local funds. To clarify, that CAN be local funds other than from school districts</p>
<p>Will new SAP run school based EPB programs be chosen by SAP? Coalition? ESD? Based on HYS? Will results and implementation be tracked by SAP or coalition?</p>	<p>We anticipate that sites are working across both prongs to create the Strategic Plan and to then align efforts with the SAP Service and Staffing Plan while also understanding that each prong has different deliverables / requirements (and fiscal agent needs) but yes, we seek a dual pronged approach working in collab across programs and strategies for the FULL site. This does also include talking about results, outcomes, etc.</p>
<p>Are DCYF supplies mentioned approved expense with CPWI funds?</p>	<p>The supplies may not be a place CPWI funds can support but a good place to leverage existing relationships in coalition. If you have a specific request though, please route to your manager for consideration but this most likely would not be allowable.</p>
<p>Can the school in conjunction with the Coalition, direct which curriculum the SAP teaches, or does the ESD decide independently?</p>	<p>We anticipate that sites are working across both prongs to create the Strategic Plan and to then align efforts with the SAP Service and Staffing Plan while also understanding that each prong has different deliverables / requirements (and fiscal agent needs) but yes, we seek a dual pronged approach working in collab across programs and strategies for the FULL site</p>

# School-Based Services Through the CPWI

Question	Answer
Can CPWI Coalitions get a copy of these SAP results?	PPT will be posted on Athena!
Do the school-based services have a strategic plan of their own? And is reaching out to the ESD the best way to find out what EBP's they are doing?	<p>School based services is a prong of CPWI and thus are engaged in the creation of the CPWI Strategic Plan. Additionally, the school-based service prong has the Service and Program Staffing Plan, which further details the responsibilities of the SAPs and ESD staff partners and the EBPs implemented at each school. You can see an example copy of this plan once posted to Athena but you / the Coalition can also request a copy as part of your engagement with your specific site.</p> <p>Keep in mind that each task order has different deliverables per our contract as well as the fiscal agent or supervising organization for each task order often has an influence on program and strategy implementation. We expect coordination across prongs so that programs and efforts compliment each other and so the programs chosen meet the needs of the school and local community in a data-informed approach. If you have questions about this, want to know more about what your local SAP is implementing, we encourage you to reach out to them directly and establish regular open communication. We are also happy to put you in touch with the ESD representative if you want to learn more about how the ESDs along with SAPs help determine which programs get implemented at each site.</p>

# Don't Sleep on Teen Gambling – Jeremy Whitaker

Question	Answer
<p>How do all the money incentive game play factor into gambling? We are seeing an increase in commercials to use these game-play apps to earn money to pay for regular expenses.</p>	<p>Things have certainly been gamified. Data is still very new. Some of these services are an attempt to gather data to narrow advertising.</p>
<p>How does WA state to compare to other states? Are there any states trending in a good direction, or nationwide are we all trending in a not great direction?</p>	<p>The data is very limited. Federal funding does not currently support problem gambling, so most states are on their own gathering data. Some states are doing great with state dollars (CA &amp; MA). However, most states are just getting things off the ground.</p>

# Additional Information

Topic	Additional Links and Information
Conferences	Don't forget about the " <a href="#">Small Towns, Big Impact 2026 Rural Prevention Conference</a> " which will be in Wenatchee, WA. It is currently scheduled for <u>Wednesday, September 30</u> - <u>Thursday, October 1st</u> , but may change to October 1st-2nd to not conflict with the NPN Conference which is Sept 29-30th! If you would like to provide input on if you would like the date to change, please complete this poll: <a href="https://www.surveymonkey.com/r/KYJFSRR">https://www.surveymonkey.com/r/KYJFSRR</a>
DBHR All Provider Calls	If you are interested in getting the notices for the DBHR All Provider Calls please sign up here: <a href="#">Washington State Health Care Authority</a>
April is Child Abuse Prevention Month	DCYF Prevention Information: <a href="https://dcyf.wa.gov/services/child-development-supports/sfwa">https://dcyf.wa.gov/services/child-development-supports/sfwa</a>
April is Child Abuse Prevention Month	Child Advocacy Centers List: <a href="https://cacwa.org/washington-cacs/">https://cacwa.org/washington-cacs/</a>

# Take Care

---

