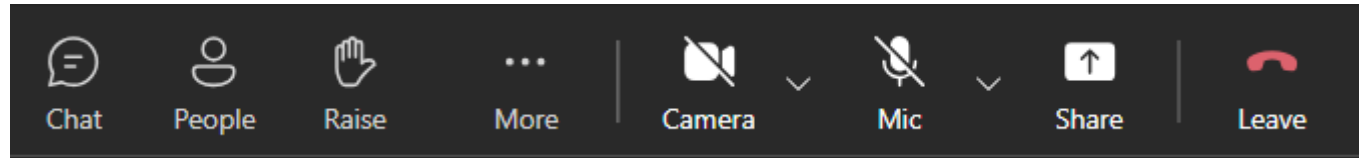


# Microsoft Teams webinar tools



Microsoft Teams

- ▶ Available tools are in the right-hand corner of your meeting window.



## ▶ Webcam / Camera

- ▶ Off → 
- ▶ On → 

## ▶ Mute / Unmute

- ▶ Muted → 
- ▶ Unmuted → 

## ▶ Chat



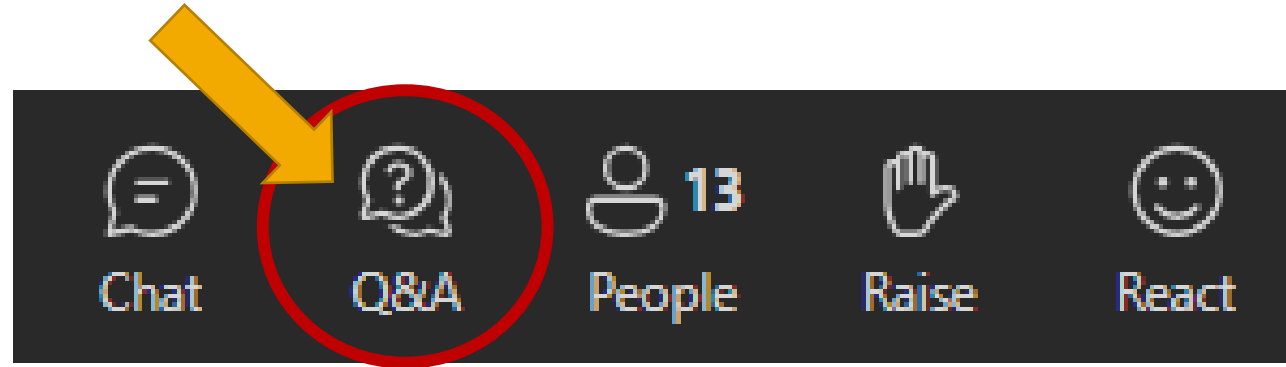
- ▶ If enabled, click the chat icon and type in your message.

## ▶ Raise hand

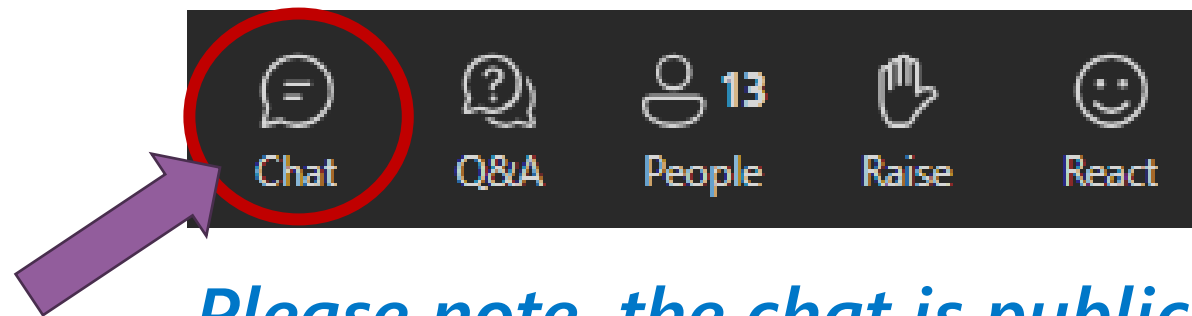
- ▶ Lowered → 
- ▶ Raised → 

**Note:** You will be highlighted for the host when hand is raised.

# Questions? Please use the Q&A Feature!



# Comments? Add them into the chat!

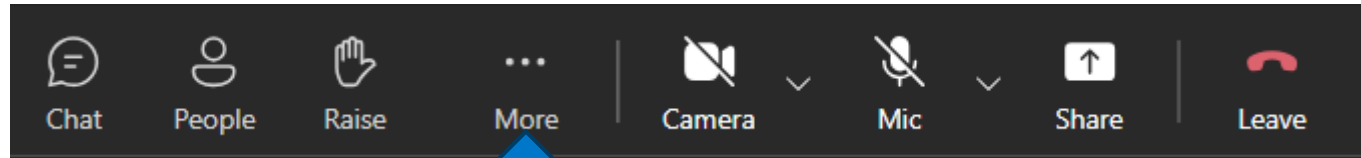


*Please note, the chat is public.*

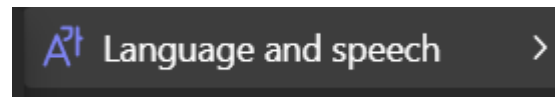
# Live captions

---

- ▶ In the toolbar, choose the **More** (3 dots) option.



- ▶ Select **Language and Speech**

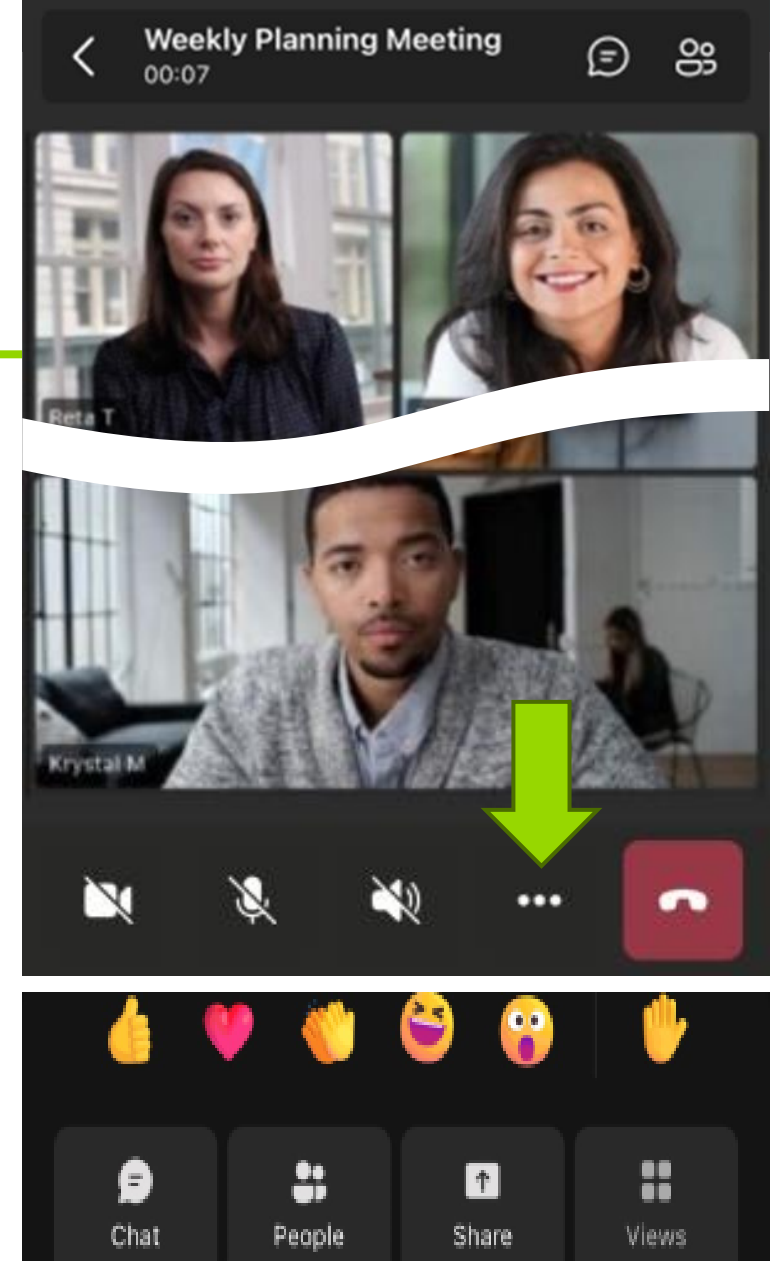


- ▶ Then choose **Show live captions**



# Mobile view

- ▶ If you're in a meeting on your mobile device, you can access different meeting controls from the top and bottom of your screen.
- ▶ To react and engage in the event, tap the ellipsis “...” for more options at the bottom-right area of your screen to open a menu and access:
  - ▶ Emoji reactions
  - ▶ Raise your hand
  - ▶ Chat
  - ▶ People (show participants)
  - ▶ Share your screen
  - ▶ Views



# March Prevention Provider Meeting

Hosted by: Division of Behavior Health and Recovery

Wednesday, March 25, 2026

9:05-11 a.m. --- Prevention Provider Meeting

11 a.m.-noon --- Third Hour

# As we get started..

---



*Type into chat:*

- ▶ What is a form of self-care or support that you find most helpful?



# Prevention Provider Meetings

Month	Date	Platform	Athena Forum Calendar Link
April	April 22	MS Teams	<a href="#">Training and events calendar   The Athena Forum</a>
May	May 27	MS Teams	<a href="#">Training and events calendar   The Athena Forum</a>
August	August 26	MS Teams	<a href="#">Training and events calendar   The Athena Forum</a>
September	September 23	MS Teams	<a href="#">Training and events calendar   The Athena Forum</a> (Annual Contractor Meeting)

# Today's Agenda

Time	Topic
9:05-9:15 a.m.   10 minutes	Welcome   Introduce New Prevention Providers to the Call   Share Microsoft Teams Webinar features – <i>Codie Garza</i>
9:15-9:25 a.m.   10 minutes	Prevention Budget Updates – <i>Sarah Mariani</i>
9:25-9:45 a.m.   20 minutes	Legislative Session Updates – <i>Billy Reamer</i>
9:45-10:10 a.m.   25 minutes	Statewide Updates – <i>DBHR Prevention Section</i>
10:10-10:35 a.m.   25 minutes	Workforce Development Updates – <i>Codie Garza</i>
10:35-10:50 a.m.   15 minutes	School-Based Services through the Community Prevention and Wellness Initiative – <i>Carola Brenes and Christopher Belisle</i>
10:50-11 a.m.   10 minutes	Break
11-11:10 a.m.   10 minutes	April is Child Abuse Prevention Month – <i>Isaac Wulff</i>
11:10-11:50 a.m.   40 minutes	Don't Sleep on Teen Gambling: An Essential Part of the New Prevention Landscape – <i>Jeremy Whitaker, EdD, MPH</i>
11:50 a.m.-noon   10 minutes	Closing – <i>Codie Garza</i>

# Prevention and Promotion Section Budget Update

---

Sarah Mariani | Section Manager | HCA/DBHR

# 2026 Community Behavioral Health Supplemental Budget

▶ [ESSB 5998 \(2026\)](#); Section 214: Community Behavioral Health

## Reductions to existing programs

- Health Engagement Hubs
- Alternative Response Teams
- Alternatives to Arrest and Jail
- Law Enforcement Assisted Diversion grants
- Recovery Navigator Program services
- Clubhouse services
- Oxford House expansion
- University of Washington's Evidence-Based Practice Institute

## Eliminations

- The Bridge Coalition technical support
- Recovery Residence technical support
- MOUD in Jails technical support
- Prescription Opioid Education
- Peer Emotional Support Network
- Statewide recovery organization and mental health education and support contracts

## Transfers

- DBHR's Suicide Prevention and Mental Health Promotion funding transferred to the Department of Health

# 2026 Community Behavioral Health Supplemental Budget (cont.)

---

## Funding swaps

- Behavioral health housing fund switch to from General Fund-State (GF-S) to the Criminal Justice Treatment Account
- Streed Medicine pilot funding switched from GF-S to Federal Medicaid appropriation equivalent to the match amount

## Investments

- Funding for Parent Child Assistance Program enrollment
- Certified Community Behavioral Health Clinic (CCBHC) demonstration funding
- Crisis facilities roadmap
- Kitsap County Recovery Café

# 2026 Legislative Session

---

Billy Reamer | Prevention System Manager | HCA/DBHR

# Legislative Session Overview

---

- ▶ Review of Bills
- ▶ Policy areas to watch for
- ▶ Rule Making
- ▶ Budget impacts

# 2026 Session: Signed by Governor - Alcohol

---

## **ESHB 2476: Alcohol Theater Licenses (Gov. signed 3/11)**

- ▶ Expands alcohol services to restaurant-style theaters from a maximum capacity of 120 to 200 seats
- ▶ Requires an alcohol safety plan to be in place if minors frequent the establishment

# 2026 Session: Signed by Governor - Cannabis

---

## **SHB 2152: Permitting the medical use of cannabis by qualifying patients in specified health care facilities (Gov. signed 3/11)**

- ▶ Establishes standards for policies for the medical use of cannabis at facilities to address the method of use, inclusion in medical records, the presentation of authorizations, responsibility for acquisition and administration, secure storage, prohibitions on health care provider administration, prohibitions on sharing, and disposal requirements.

# 2026 Session: Governor Desk - Education

---

## **SHB 2594: Ensuring that unhoused children and youths in Washington have equal access to free, appropriate public education. (With Gov. for signature)**

- ▶ Codifies provisions and requirements in state law that align with the federal McKinney-Vento Homeless Assistance Act that are ensuring that homeless children and youths have equal access to the same free, appropriate public education as is provided to other children and youths.
- ▶ Provides that the actions of the Office of the Superintendent of Public Instruction, school districts, charter schools, and state-tribal education compact schools that meet requirements of the federal act also satisfy equivalent requirements established in state law.

# 2026 Session: Governors Desk – Education

---

**E3SHB 1634: Providing school districts and public schools with assistance to coordinate comprehensive behavioral health supports for students. (With Gov. for signature)**

- ▶ Requires the Office of the Superintendent of Public Instruction (OSPI) and the educational service districts (ESDs) to develop a technical assistance and training framework (framework) to provide school districts and public schools with assistance in supporting student behavioral health.
- ▶ Requires the OSPI and the ESDs to use the framework to optimize delivery and coordination of behavioral health technical assistance and supports, once it is developed.

# 2026 Session: Dead Bills- Tobacco

---

## **SB 6129: Concerning the taxation of cigarettes, vapor products, and other products containing tobacco or nicotine.**

- ▶ Codifies Replaces the various tax rates imposed on tobacco products with a single rate of 95 percent of the taxable sales price for all products containing nicotine except for cigarettes.
- ▶ Repeals the tax on vapor products.
- ▶ Increases the cigarette tax to \$5 per package of 20 cigarettes.
- ▶ Reinstates and modifies vapor product tax revenue distributions to the Andy Hill Cancer Research Endowment Fund Match Transfer Account and the Foundational Public Health Services Account.
- ▶ Dedicates the first \$10 million collected on the additional cigarette tax each fiscal year to the Youth Tobacco and Vapor Products Prevention Account.
- ▶ Authorizes the Governor to renegotiate tribal tax compacts for cigarettes and vapor products.

# LCB Rulemaking and Engagement

---

## ▶ Alcohol

- ▶ Alcohol product placement – Informal comment period

## ▶ Cannabis

- ▶ Cannabis Advertising - ESB 5206
- ▶ Cannabis Batch tracking – WAC 314-55-083 to track plants in batches rather than individually

For more information on currently open rule projects through LCB, you can check their dashboard:

<https://lcb.wa.gov/research/dashboards/rules-tracker>

# Policy Issues that may Return

---

- ▶ **Alcohol:** BAC limit
- ▶ **Cannabis:** Home Grow, Move some regulation to Department of Agriculture, Ongoing issues related to Hemp-based Cannabinoids, Consumption sites
- ▶ **Tobacco/Vape:** Continued efforts to address taxation, Tobacco Flavor ban, Vape Product Directory
- ▶ **Opioids:** Kratom, Nitrous Oxide, non-opioid pain management
- ▶ **Early Learning and Intervention:** Funding for statewide behavioral health services, various tax modifications for funding for education, AI issues related to education.

# Educational Resources

---

## ▶ Research Briefs:

- ▶ <https://theathenaforum.org/prevention-101/research-briefs-substance-use-prevention-and-mental-health-promotion>
  - ▶ The power of prevention across domains
  - ▶ Negative health impacts of high-THC products
  - ▶ Vaping nicotine: high risk for adolescents
  - ▶ Protecting youth from the harmful effects of alcohol, cannabis, and commercial tobacco (nicotine) marketing and promotion

## ▶ CPWI Outcomes Summary:

- ▶ Can be found on the CPWI Athena page: <https://theathenaforum.org/cpwi>

## ▶ Prevention Voices (outside resource):

- ▶ [Please register here for our weekly legislative updates](#)

# Statewide Updates

---

SUD Prevention and MH Promotion Section  
HCA/DBHR

# SAMSHA Site Visit

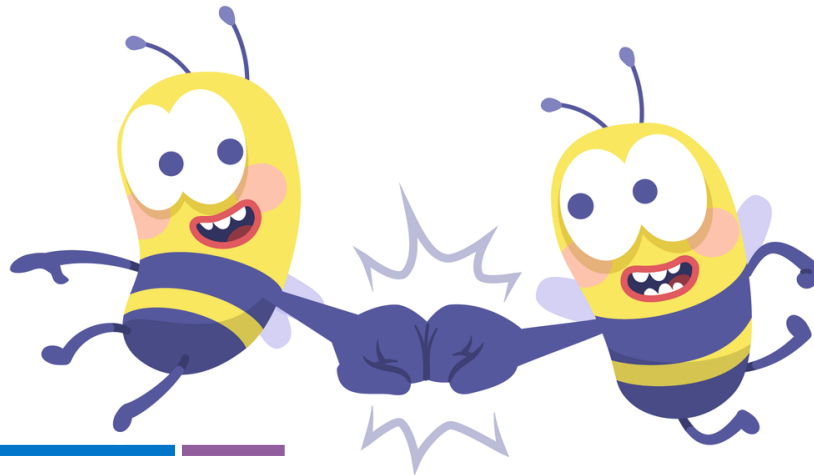
---

**When:** April 20-23, 2026

**Where:** Olympia, WA and virtual

**Who:** HCA Team, Subrecipients (*have been notified*)

**What:** Review the incredible work happening in our state!



# SAMSHA Site Visit

---

## ▶ **Advisory Workgroup**, April 20

- ▶ There will be time for two-directional Q&A

## ▶ **Prevention Provider Meeting**, April 22

- ▶ We would like to have YOU share success stories!
  - ▶ Send your success stories to your Prevention System Manager by April 8
    - If selected, prepare 1-2 slides by April 15
    - Other success stories will be provided to SAMSHA
- ▶ There will be time for Q&A
  - ▶ Send your questions for consideration to your Prevention System Manager by April 10.

# Healthy Youth Survey

---

- ▶ 2025 quality assurance underway!
- ▶ Preparing for April 2026 press release + results
  - ▶ Some delays: might be closer to late than mid April
  - ▶ Recorded webinars and other results presentations to begin late April through June 2026
- ▶ Reminder – 2027 Revision process paused.
  - ▶ Thank you for thoughtful feedback submitted through AskHYS.net  
[https://lgan.qualtrics.com/jfe/form/SV\\_5dUI6jnnaNgM30a](https://lgan.qualtrics.com/jfe/form/SV_5dUI6jnnaNgM30a)

***Thank you for your partnership and commitment: we could not do this without you!***

# Minerva

---

## ▶ **Updated** Survey Selection Guide (version 8)

- ▶ Published on 03/17/2026
- ▶ Corrects an oversight; instrument SFWSU\_AXs has been added to the logic model Family Mngmt Problems, Use of family management skills.
- ▶ On [The Athena Forum](#) on the [Minerva page](#) under [Surveys/Tests](#), and in [Minerva 2.0](#) under [Resources](#) on the [State Resources page](#).

# Minerva

---

- ▶ **Updated** New User Training Slides (Days 1 and 2)
  - ▶ New for state fiscal year 2026
  - ▶ Updated to include more visuals from Minerva 2.0, and clearer reporting guidance including reporting rules and requirements by sub-channel
  - ▶ Broken into two resources: Day 1 and Day 2.
  - ▶ In [Minerva 2.0](#) under [Resources on the State Resources page](#).

# Minerva

---

- ▶ **Updated** Welcome to Minerva 2.0 (version 2) + New User Quiz
  - ▶ New for state fiscal year 2026
  - ▶ Updated with new AI text to speech technology for a friendlier, easy to follow automated voice. Added clear information on system navigation and how to use Minerva 2.0 resources.
  - ▶ In [Minerva 2.0](#) under [Help on the Training page](#).

# Minerva

---

## ▶ **NEW** Query Builder templates and export automation

### Query Builder

The screenshot displays the 'Query Builder' interface. At the top, there is a section for 'Query Templates' with a green checkmark icon. Below this, there is a 'Load Saved Template' dropdown menu with the text 'Select a template...' and a downward arrow. To the right of the dropdown are three buttons: 'Load Template' (orange), 'Save Current as Template' (green), and 'Delete Template' (red). Below the template section is a section for 'Query Automation' with a green right-pointing arrow icon. At the bottom, there are four tabs: 'Data Source' (active), 'Date Range', 'Filters', and 'Columns'. Below the tabs is a text prompt: 'Identify the root source of data used in the data export.'

*Follow the data confidentiality and suppression rules in your contract.*

# Minerva

---

- ▶ **Cancelled** External technical support call
  - ▶ ~~Wednesday, April 8 from 9 a.m. – 10 a.m.~~
- ▶ **Reminder** Quarterly New User Training series
  - ▶ **Through Microsoft Teams**
  - ▶ **Quarter 4**
    - ▶ Day 1, May 12, 2026, 9 a.m. to 4:30 p.m. AND
    - ▶ Day 2, May 14, 2026, 9 a.m. to 4:30 p.m.
  - ▶ **NEW registration link** available on The Athena Forum Training & Event calendar: [Register here](#)

# Expenditure Request

---

- ▶ A&R / FSI Documents are in the works for both CPWI and CBO providers!
- ▶ The addition and removal of funding is being completed now.
- ▶ Expect A&R / FSI Documents in the next 1-2 weeks with an active date of April 1.
- ▶ This will include any SFY 2026 & 2027 requests.
- ▶ *Up next: SFY 2027 allocations for CPWI. Anticipate more information in next 2-3 weeks.*

# Community Survey – *Provider Spotlight*

---

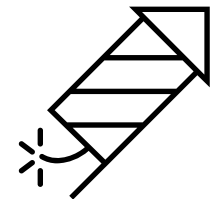
## ▶ **Congratulations** to Sedro-Woolley RISE!

- ▶ As of yesterday, 249 responses... *and still climbing!*
- ▶ That's 180% of 2026 target!



## ▶ **Coalition Coordinator:** *Samantha Stormont*

- ▶ *How did you do it, Sam?*



## ▶ **Distribution:** Coalition partners, district messaging app

## ▶ **Framing:** RISE branding, survey questions as "headlines"

## ▶ **Balancing:** Shifting focus now to underrepresented responders through community events, key partners, etc.

# Workforce Development

---

SUD Prevention and MH Promotion Section

HCA/DBHR

# welcome

*Please raise your hand or type into the question pane if you are new to the Prevention community and we would love to welcome you!*



*Congrats to everyone who has recently obtained or renewed their CPP!*

# Strategic Planning Training Series

---

## Basic Knowledge & Capacity

3/5/26: Introduction to Prevention Science: Risk & Protective Factor Theory – recording available on [Athena](#)

4/2/26: Building Culture of Participation – [registration open](#)

5/4/26: Processing Skills and Effective Meetings

---

## Assessment

6/1/26: Needs Assessment and How to Use Data

6/22/26-6/24/26 (CLI): Resource Assessment / Gap Analysis – previous training available on [Athena](#)

9/14/26: Planning and Program Selection

9/23/26: Developing a Monitoring Plan for your Strategic Plan

10/8/26: Data Book Training – previous materials available on [Athena](#)

---

## Planning

6/22/26-6/24/26 (CLI): Coalition Development Series: Logic Model Clinic

6/22/26-6/24/26 (CLI): Community Planning – previous training available on [Athena](#)

---

## Implementation

10/27/26-10/29/26 (Prevention Summit): Effective Implementation

---

## Evaluation

12/26 or 1/27: Reporting and Evaluation – previous training available on [Athena](#)

# Other Training Opportunities

---

## Training

4/6/26-4/8/26: New Coordinator Basic Training ToT – information on [Athena](#)

4/13/26-4/24/26: Ethics in Prevention – information on [Athena](#)

5/8/26-5/29/26: New Coordinator Basic Training – information coming soon

7/20/26-7/23/26: SPF Application for Prevention Success Training – register on [Athena](#)

7/26-9/26: Environmental Strategies Series (SPTAC) - information coming soon

## Conferences

5/6/26: CCSAP annual conference – information on [Athena](#)

5/19/26: Spring Youth Forum

6/22/26-6/24/26: Coalition Leadership Institute

10/2026: Prevention Summit

## Technical Assistance

May 2026 – December 2026: Community of Practice (Provider Meeting 3<sup>rd</sup> Hour)

PTTC offers intensive TA at no cost! Take advantage of this phenomenal resource. Talk to your PSM to determine if you will benefit from this TA.

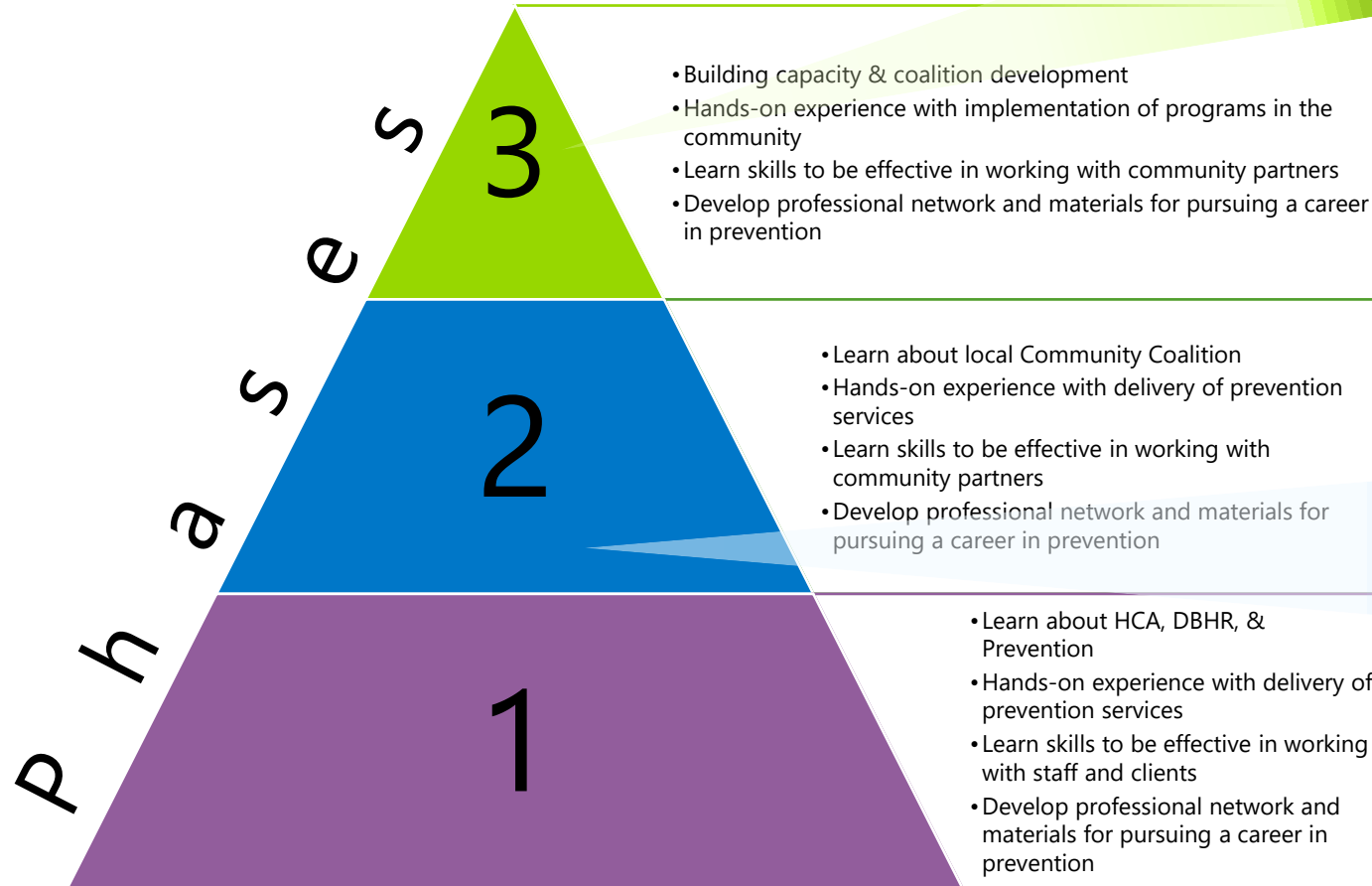
# Fellowship Updates

---

- ▶ Cohort 13 has been **BUSY**
  - ▶ Athena
  - ▶ Grants
  - ▶ Healthy Youth Survey
  - ▶ Evidence-Based Program Support
  - ▶ Policy
  - ▶ Invoice
  - ▶ Events
- ▶ Recruiting for Cohort 14 & 15 to begin soon! (*summer 2026*)



# Interested in hosting a fellow?



- ✓ Offer ongoing but more limited mentorship
- ✓ Continue to provide expertise and advise as needed
- ✓ Offer periodic check-ins and be a ready-resource to the Fellow

- ✓ Provide comprehensive mentorship and support
- ✓ Educate the Fellow on the mission, vision, and operational methods of the local coalition
- ✓ Guide the Fellow through hands-on learning experiences regarding prevention service delivery
- ✓ Introduce the Fellow to key community members and stakeholders to build their professional network
- ✓ Suggest relevant training and development opportunities

# Spring Youth Forum Update

---

- ▶ Save the Date: May 18-19, 2026, at the Great Wolf Lodge
- ▶ Scholarship Application Launched March 16, 2026
  - ▶ Team Adult Advisors must complete the application by **April 3, 2026**
  - ▶ Scholarship applications review begins **March 30, 2026**
  - ▶ Once accepted, registration due by **April 17, 2026**
- ▶ Conference website has been updated:
  - ▶ More information available at:  
[www.SpringYouthForum.org](http://www.SpringYouthForum.org)
  - ▶ Join our List Serv for updates by emailing us at: [SYF@enroutenw.com](mailto:SYF@enroutenw.com)



# 2026 Coalition Leadership Institute (Part 1)

---

## *Mark your calendars!*

- ▶ **Where:** In-person at *Evergreen State College – Evans Hall*
- ▶ **When:** June 22-June 24, 2026
- ▶ **Who:** Attendance is required for CPWI Coalition Coordinators; Day 1 is required for representatives from the Educational Service Districts for school-based services
- ▶ **What will be covered:** Resources assessment/gap analysis, developing a logic model & building coalition capacity to select evidence-based programs that meet community needs



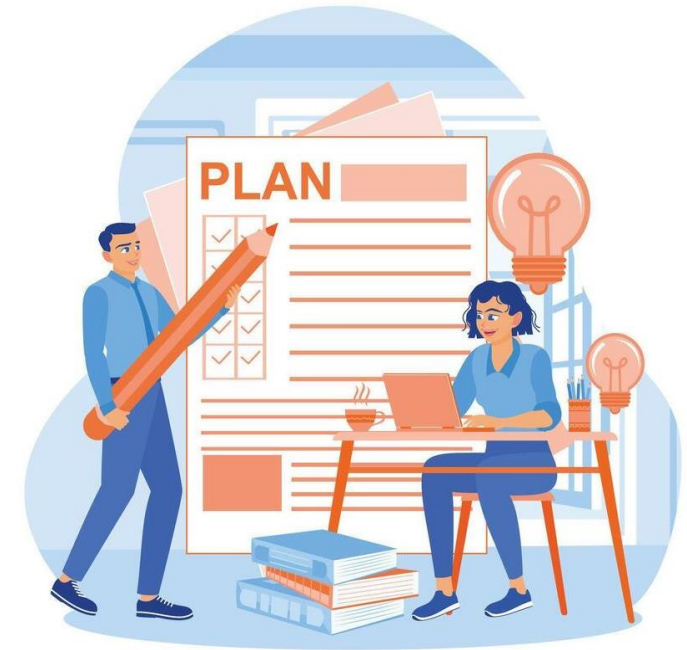
*Finalized agenda & registration coming soon!*

# 2026 Coalition Leadership Institute (Part 2)

---

## Things to note for travel planning:

- ▶ We will not be holding lodging blocks in nearby hotels.
  - ▶ It is the responsibility of each site to call nearby hotels and inquire about per-diem room availability.
  - ▶ Most hotels in the area are about 12-15 minutes away from the venue – Tumwater and Lacey area.
- ▶ Breakfast & lunch will be on your own for each day.
  - ▶ Morning & afternoon beverage service (coffee, tea & hot water) will be provided on Day 2 and Day 3.
  - ▶ Evergreen State College has an on-campus cafeteria, The Greenery, and café, The Drop, that will be open for attendees to purchase food and drinks. *Credit/Debit card transactions only, no cash.*
- ▶ Paid parking available on campus, \$6/day.
  - ▶ HCA will be paying up to 200 parking passes per day.
  - ▶ Parking will be paid on-site through a QR code via phone.



# Prevention Summit Updates (Part 1)

---

- ▶ *En Route Network* is the new vendor – listserv communications will be coming through their team!
- ▶ Save-the-date coming soon – October 27-29, 2026, at the *Hotel Murano* in Tacoma, WA
  - ▶ October 27 will be the Annual Prevention Provider Meeting & Summit pre-registration day
  - ▶ October 28-29 will be Prevention Summit Day 1 and Day 2



# Prevention Summit Updates (Part 2)

---

- ▶ Registration
  - ▶ Hoping to launch by late summer/early fall
- ▶ Call for Presentations/Speakers
  - ▶ Hoping to launch late spring/early summer
- ▶ Coming soon! 2026 graphic web banner & virtual meeting backgrounds will be uploaded to the Summit website.
  - ▶ Email announcement sent through listserv when it's live.
- ▶ Reach out to [contactus@preventionsummit.org](mailto:contactus@preventionsummit.org) for any questions/concerns!

# School-Based Services through the Community Prevention and Wellness Initiative (CPWI)

---

Carola Brenes | School-Based Services Policy and Program Manager

Christopher Belisle | Prevention System Manager

HCA/DBHR

# School Based Services through CPWI

---



- ▶ Is a comprehensive and integrated model of school-based services that focuses on substance use prevention and other non-academic student supports in secondary schools.
- ▶ NEW this year: Based on the [SAHMSA model](#).
- ▶ Places trained Student Assistance Professionals in CPWI sites that provide multi-tiered services.

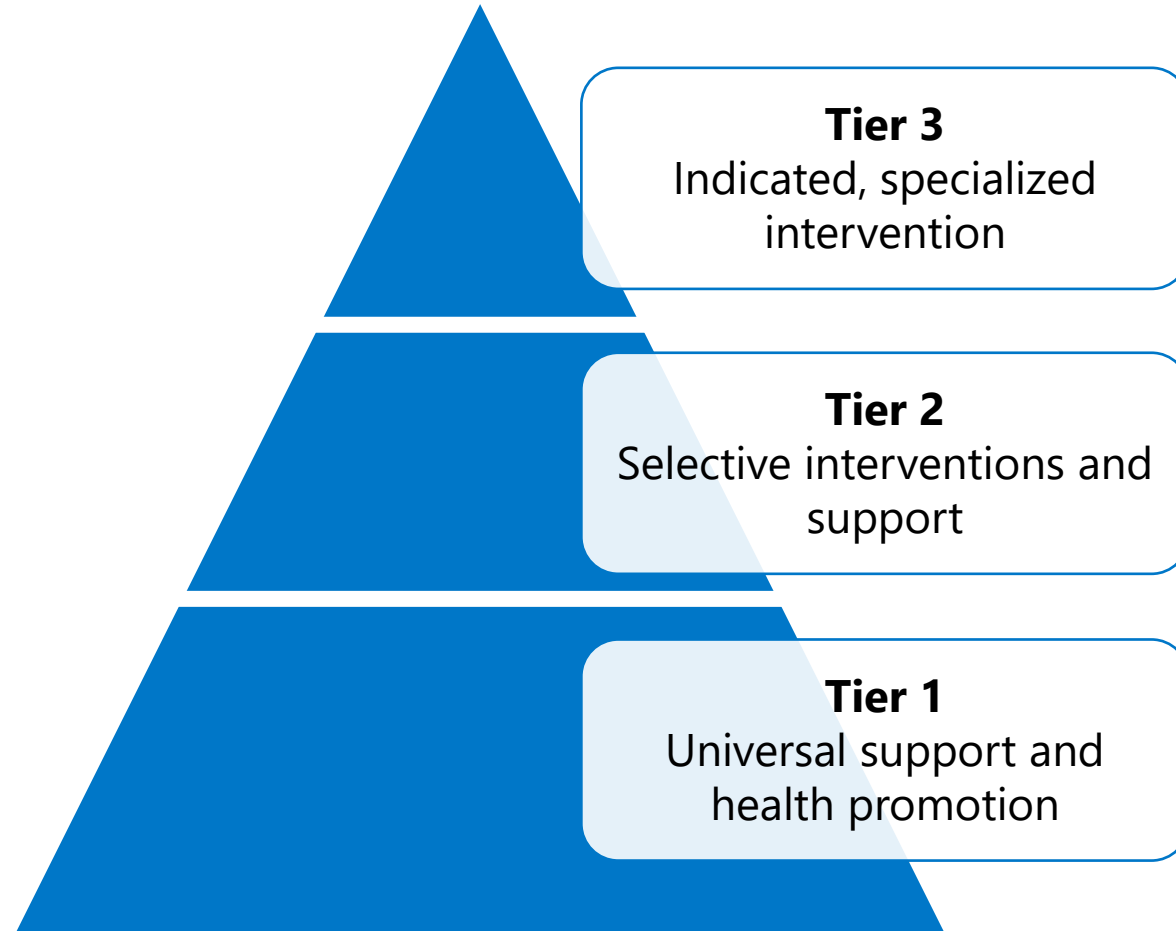
# HCA's partnership with the ESDs

---

- ▶ Contractual relationship with the 9 ESDs for the implementation of school-based services.
- ▶ Partnership through collaboration with the Association for the Educational Service Districts (AESD) and collaboration with the ESD Directors.
- ▶ Day-to-day contract management and TA with the Directors and SAP Coordinators / Supervisors.
- ▶ Additionally, as part of MIST, there is an ESD workgroup that includes ESD representatives from each of the 9 ESDs.

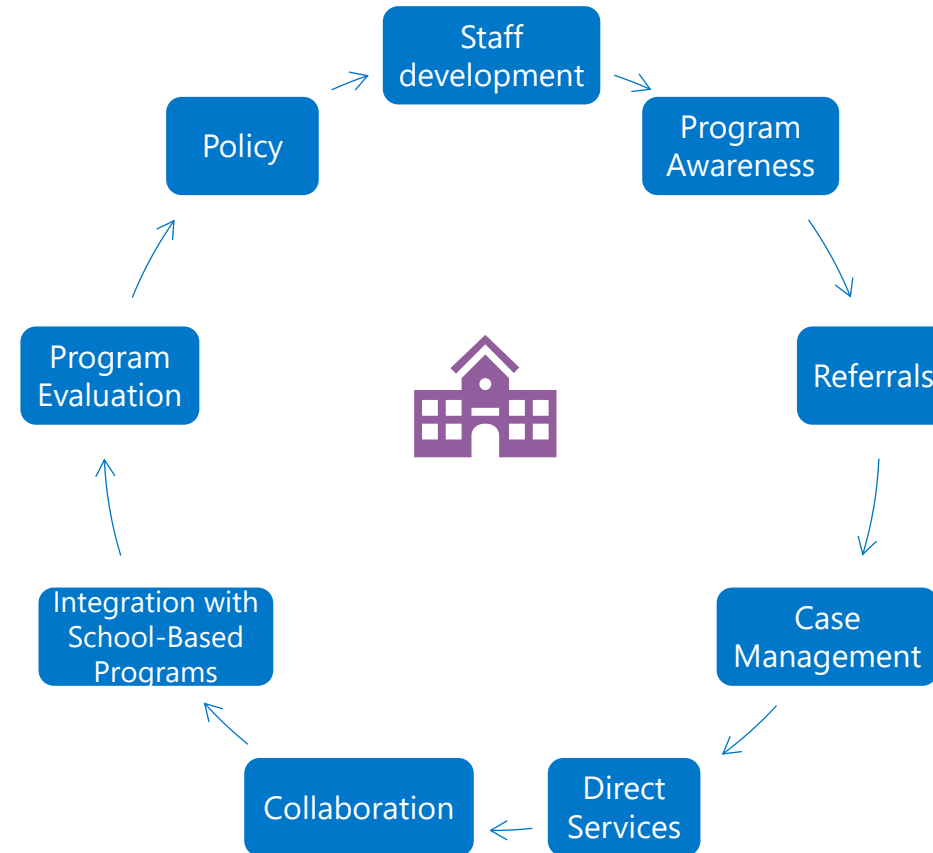
# Tiered Approach

---



# Core Components

---



# Site Overview

---

▶ 95 SAPs in 2024-25

School Level	Grades Levels	Number
Elementary schools	K – 6	1
Middle schools	5, 6, or 7 – 8	54
K-8 schools	K – 8	1
Junior high/senior high schools	6 or 7 – 12	12
K-12 schools	K – 12	3
High schools	9 – 12	61
Alternative schools	9 – 12	5
Total		<b>137</b>

# Key Deliverables

---

- ▶ Participate in creation of CPWI Strategic Plan and create a Service and Staffing Plan + Budget for school-based services.
  - ▶ The Budget is NEW this year after many years of negotiation.
- ▶ Attend Coalition meetings.
- ▶ Follow the CPWI Guide.
- ▶ Provide training / supervision to Student Assistance Professionals.
- ▶ Ensure SAPs obtain and maintain SUDP or CPP unless granted waiver.
- ▶ Secure local match.

# Budget

Select ESD/Contractor Name		YEAR ONE:					July 1, 2025 - June 30, 2026
		Date Budget Last Revised:					
Category & Line Item	Unspecified Fund Allocation (if funding sources not yet identified)	Select your funding source	Select your funding source	Select your funding source	Select your funding source	Select your funding source	SUBTOTAL (from HCA sources)
<b>Admin/Indirect</b>							
Allowable Admin Maximum Allocation (May be divided between contractor and subcontractors.	\$ -	\$ -	\$ -	\$ -	\$ -	\$ -	\$ -
<b>ESD Staff Salary &amp; Benefits (combined)</b>							
Student Assistance Professionals [List # of SAPs: _]	\$ -	\$ -	\$ -	\$ -	\$ -	\$ -	\$ -
SAP Supervisor(s)	\$ -	\$ -	\$ -	\$ -	\$ -	\$ -	\$ -
Director/Coordinating Staff	\$ -	\$ -	\$ -	\$ -	\$ -	\$ -	\$ -
<b>Subtotal</b>	\$ -	\$ -	\$ -	\$ -	\$ -	\$ -	\$ -
<b>Program Expenses</b>							
School-Based Prevention and Intervention Services							
Program Supplies (i.e. pens, notepads)	\$ -	\$ -	\$ -	\$ -	\$ -	\$ -	\$ -
Curriculum (i.e. Life Skills)	\$ -	\$ -	\$ -	\$ -	\$ -	\$ -	\$ -
Printing Costs	\$ -	\$ -	\$ -	\$ -	\$ -	\$ -	\$ -
Technology / Software	\$ -	\$ -	\$ -	\$ -	\$ -	\$ -	\$ -
Occupancy	\$ -	\$ -	\$ -	\$ -	\$ -	\$ -	\$ -
Training/Conference [insert name] (i.e. registration, travel)	\$ -	\$ -	\$ -	\$ -	\$ -	\$ -	\$ -
<b>Subtotal</b>	\$ -	\$ -	\$ -	\$ -	\$ -	\$ -	\$ -
<b>Other Staff/Program Needs</b>							
Sub-Contract with [insert name]	\$ -	\$ -	\$ -	\$ -	\$ -	\$ -	\$ -
Sub-Contract with [insert name]	\$ -	\$ -	\$ -	\$ -	\$ -	\$ -	\$ -
<b>Subtotal</b>	\$ -	\$ -	\$ -	\$ -	\$ -	\$ -	\$ -
<b>Travel</b>							
Assorted Travel (not accounted for above)							
Local mileage	\$ -	\$ -	\$ -	\$ -	\$ -	\$ -	\$ -
Overnight travel (mileage, per diem, lodging, etc.)	\$ -	\$ -	\$ -	\$ -	\$ -	\$ -	\$ -
Required: Day 1 of Coalition Leadership Institute (mileage,	\$ -	\$ -	\$ -	\$ -	\$ -	\$ -	\$ -
Required: Provider Meeting (mileage, per diem, lodging, et	\$ -	\$ -	\$ -	\$ -	\$ -	\$ -	\$ -
Optional placeholder: Other expense	\$ -	\$ -	\$ -	\$ -	\$ -	\$ -	\$ -
<b>Subtotal</b>	\$ -	\$ -	\$ -	\$ -	\$ -	\$ -	\$ -
<b>CATEGORY</b>	<b>Unspecified Fund Allocation</b>						<b>SUBTOTAL (from HCA sources)</b>
Admin/Indirect	\$ -	\$ -	\$ -	\$ -	\$ -	\$ -	\$ -
Salary & Benefits	\$ -	\$ -	\$ -	\$ -	\$ -	\$ -	\$ -
Program Expenses	\$ -	\$ -	\$ -	\$ -	\$ -	\$ -	\$ -
Travel	\$ -	\$ -	\$ -	\$ -	\$ -	\$ -	\$ -
<b>TOTALS</b>	\$ -	\$ -	\$ -	\$ -	\$ -	\$ -	\$ -
Type your allocated budget amount by funding source in these cells	\$ -	\$ -	\$ -	\$ -	\$ -	\$ -	\$ -
							\$ -



# Service & Staffing Plan

SAP Name, Credentials	CPWI Site	School(s) & Grades Served	Hours Worked Per Day	Working Days Per Year	Prevention Education Curriculum	Amount of match secured	Was match collected?	Performance Measure C
<i>If vacant, leave blank. Add additional rows as needed.</i>	<i>Which district or community does the SAP serve?</i>	<ul style="list-style-type: none"> <li>List each school served.</li> <li>If multiple, <b>bold</b> the main location(s). "Main" means they serve on a regular, scheduled basis (1 day a week is a "main" site).</li> <li>List grades served at each.</li> </ul>	<i>Hours the SAP works an average day.</i>	<i>How many working days a year are in "base pay?"</i>	<i>What is the classroom curriculum used at each site? Refer to the <a href="#">Excellence in Prevention</a> page. If not on the registry, <u>indicate an exception is requested.</u></i>	<i>Match amount planned. A minimum of \$17,100 <u>required per site.</u></i>	<i>Click yes or no. "Yes" also applies to an agreement in place to receive match at a later date.</i>	<b>For DBHR Use Only</b> <i>This section is to be completed by DBHR after submission.</i>
<i>Example: Abby Apple, CPP</i>	<i>MyTown</i>	<b>MyTown MS (6-8)</b> <i>MyTown HS (9-12)</i>	<i>8 hours</i>	<i>180 days</i>	<i>Life Skills Training: Botniv Middle School</i>	<i>\$17,100</i>	<input checked="" type="checkbox"/> Yes <input type="checkbox"/> No	<i>Enrollment:</i> <i>Measure:</i> <i>50 <u>Fulls</u> or 15% = __.</i>
1.					Choose an item.	\$	<input type="checkbox"/> Yes <input type="checkbox"/> No	<i>Enrollment:</i> <i>Measure:</i> <i>50 <u>Fulls</u> or 15% = __.</i>
2.					Choose an item.	\$	<input type="checkbox"/> Yes <input type="checkbox"/> No	<i>Enrollment:</i> <i>Measure:</i> <i>50 <u>Fulls</u> or 15% = __.</i>

# Service & Staffing Plan

Coordinating Staff Name, Credentials	Title/Role	Coordination Strategies/Activities	Other (optional)	Working Days Per Year	FTE Billed to SAPISP
<i>If vacant, leave blank. Add additional rows as needed. Include all coordinating staff that bill for services.</i>	<i>What is their job title or SAPISP role?</i>	<ul style="list-style-type: none"> <li>• Use the dropdown to indicate <u>which</u> are conducted by each <u>staff</u>.</li> <li>• For staff conducting multiple activities, copy and paste the dropdown.</li> <li>• If "other," please describe in the optional column to the right.</li> </ul>	<i>Additional information relevant to the service and staffing plan, as needed.</i>	<i>How many working days a year are in "base pay?"</i>	<i>Provide the percentage of this staff's FTE that is billed to SAPISP.</i>
<i>Example: Opal Orange, CPP</i>	<i>Prevention Manager (SAP Supervisor)</i>	<i>New Staff Orientation Staff Start-Up Daily Operations and Supervision LGAN Data Pull Professional Development for Staff Other:</i>	<i>This staff is a new Supervisor and is still going through onboarding.</i>	<i>220 days</i>	<i>1 FTE</i>
1.		Choose an item.			
2.		Choose an item.			

# Key Deliverables

---

- ▶ Ensure implementation of the Healthy Youth Survey (HYS).
- ▶ Complete site visits at each school receiving SAP services.
- ▶ Provide classroom education through a minimum of one (1) implementation of an approved Evidence Based Program (EBP).
  - ▶ Note: This is currently the only EBP requirement. Prior to this school year, Project SUCCESS as a whole was considered an EBP. As we moved to the SAMHSA model, we no longer consider the whole “model” or “framework” an EBP and instead treat EBP status more similar to what you see with CPWI Coalitions
- ▶ Meet data reporting requirements.

# Future Goals

---

A few things we're working on now and over the next few years.

- ▶ Refining EBP requirements and identifying additional EBP options.
- ▶ Reviewing and updating the Logic Model.
- ▶ Transitioning reporting to Minerva (from the LGAN system) + Training/TA.
- ▶ Reviewing pre and post test questions.
- ▶ Discussing evaluation goals.
- ▶ Further integration of TO1 and TO2.
- ▶ Developing policies and procedures regarding contract deliverables.
- ▶ And more!

# Outcomes

---

As a result of participating in the program, students have:

- ▶ Strengthened social skills
- ▶ Abstained from antisocial behaviors
- ▶ Abstained from using alcohol and other drugs
- ▶ Reduced the severity of their substance use



# 2024-25 school year: Service delivery

Category	Total activities
Universal Services (Tier 1)	3,612
• Awareness	2,003
• Education	445
• Curriculum	122
• Peer (youth leadership)	383
• Planning	659

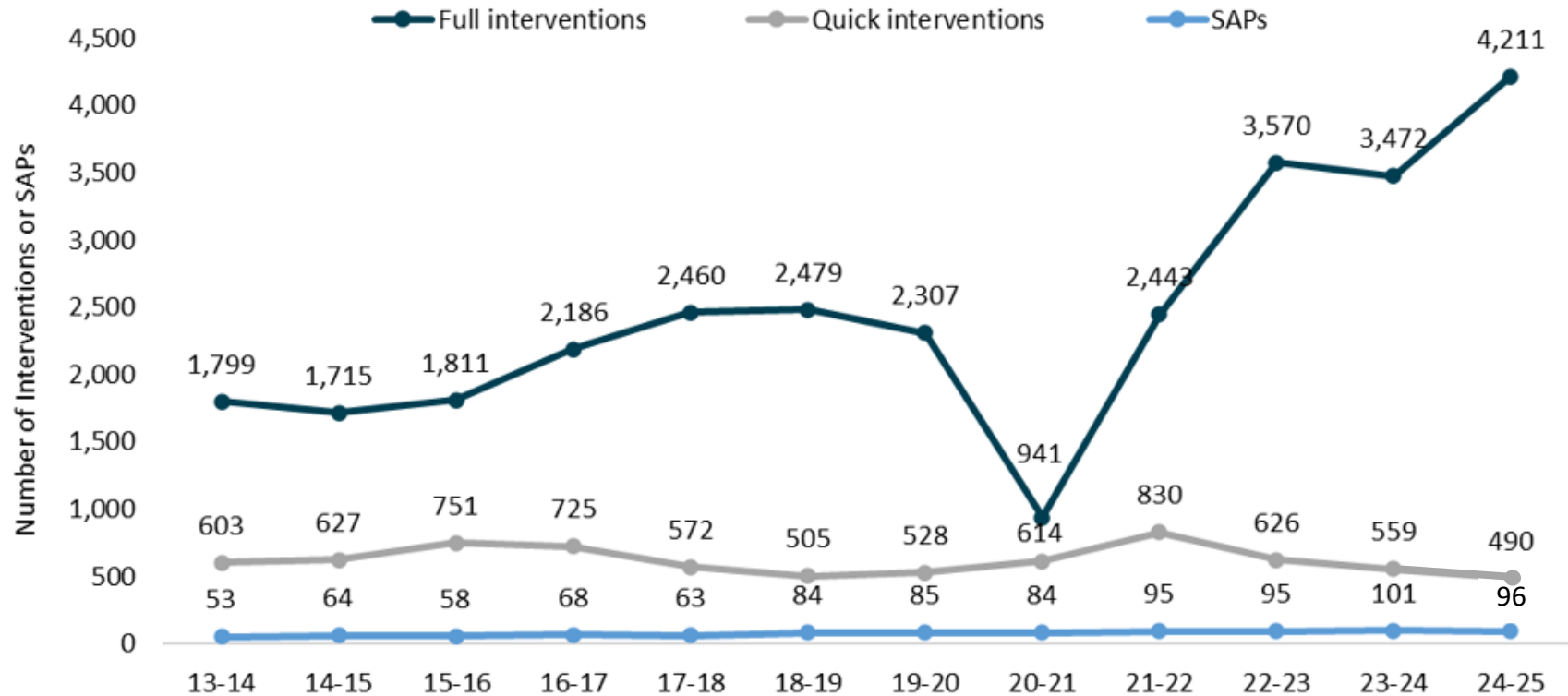
# 2024-25 school year: Service delivery

---

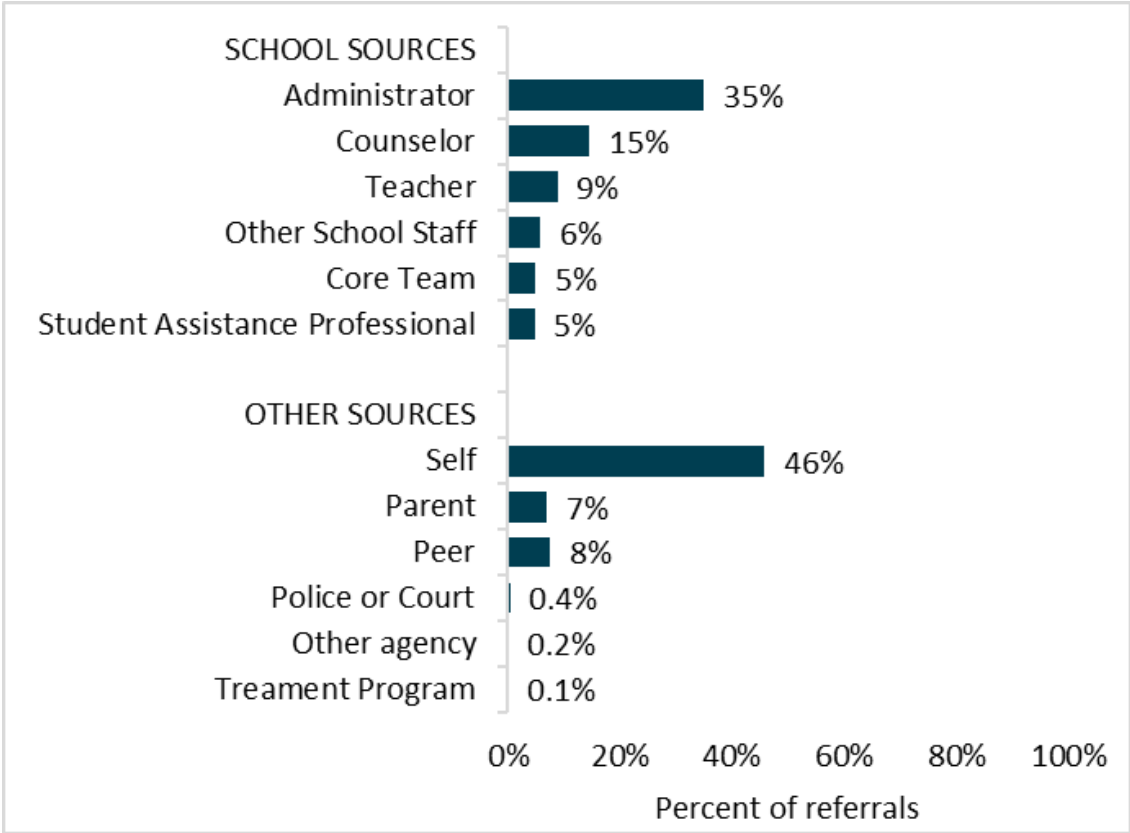
Category	Total activities
Selective/Indicated Services (Tier 2 or 3)	4,701
• Quick interventions*	490
• Full interventions	4,211
• Full interventions + substance use reduction goal	2,165

*\*Quick interventions are not always entered into the system*

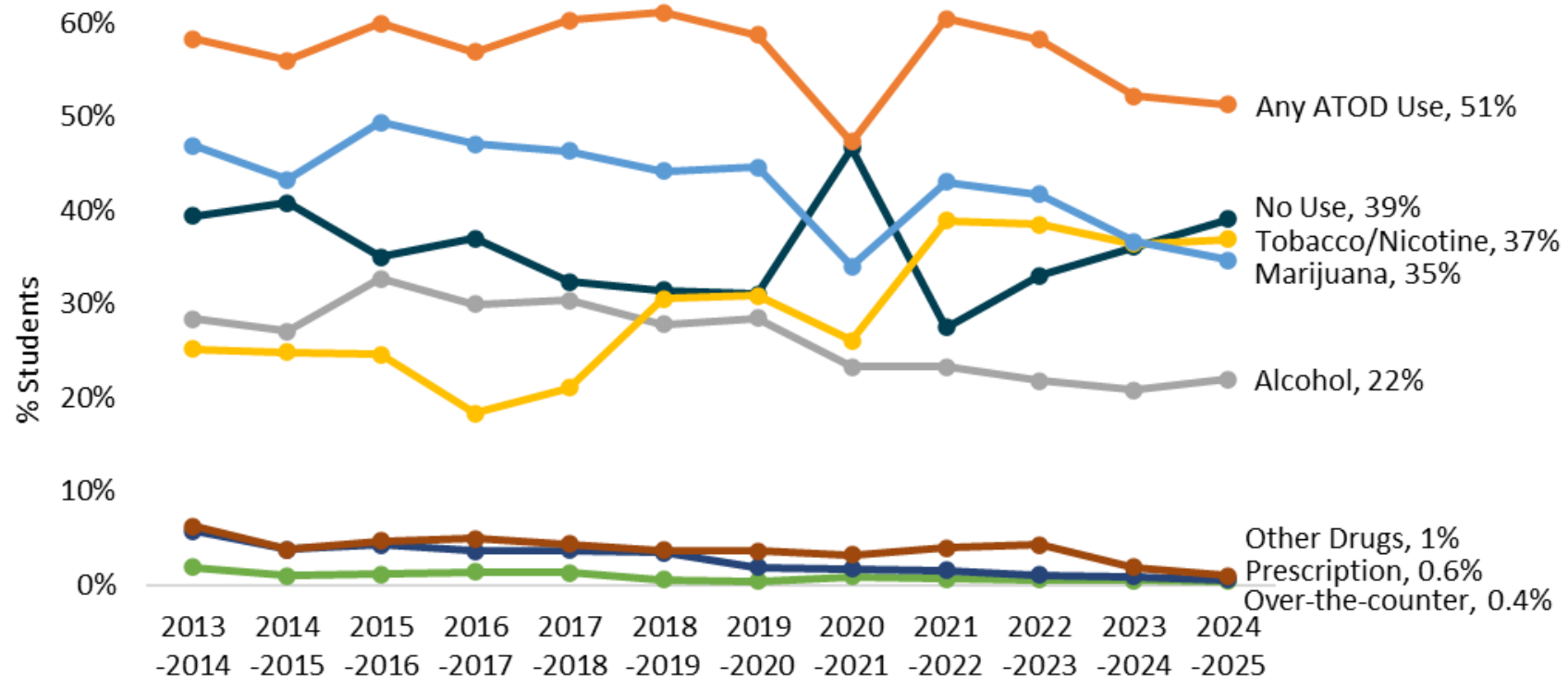
# 2024-25 school year: Students served



# 2024-25 school year: Referral sources

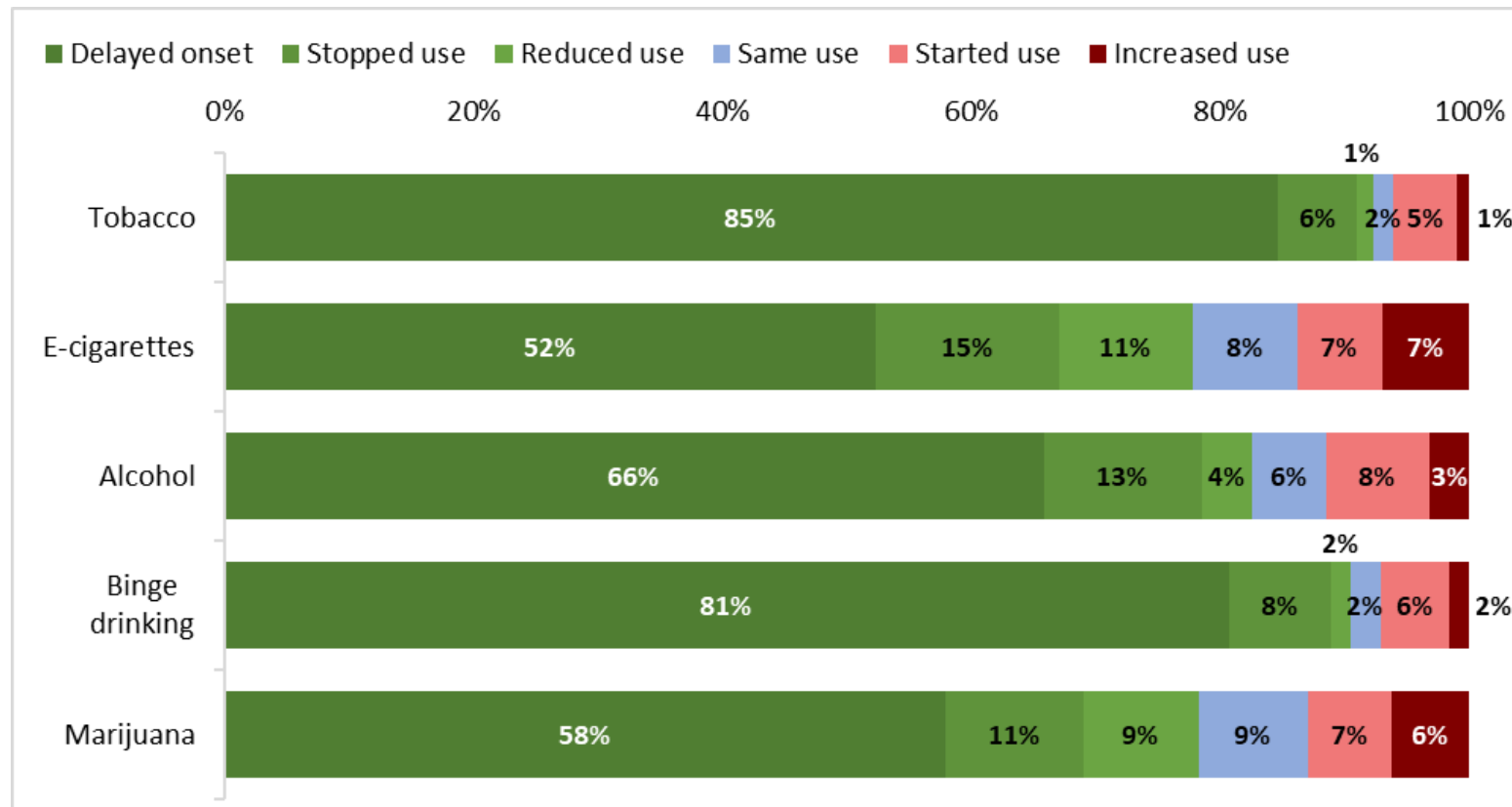


# Substance use reported at intake



# 2024-25 school year: Substance use

Percent of Students by Substance Use Categories Change in 2024-2025



# 2024-25 school year: Other outcomes

---

Topic	Pretest	Post-test
Hope Scale: I am doing pretty well	32%	45%
Hope Scale: When I have a problem, I can come up with lots of ways to solve it.	25%	34%
Think it's harmful to vape daily or nearly every day	74%	81%
Think it's harmful to try marijuana once or twice	38%	50%
Think it's harmful to take 1-2 drinks nearly every day	68%	75%

# Performance Measure A

---

- ▶ A minimum of 60% of the students who participate in the program (selected/indicated) must complete both a pre-test and a post-test.
- ▶ **82%** of participants received a paired pre-test and post-test



# Performance Measure B

- ▶ A minimum of 85% of the students with a pre-test and post-test who participated in the program must have the following outcomes on each of the following 3 indicators:
  - ▶ i) Overall, how important has this program been to you? Very important or pretty important.
  - ▶ ii) Are you glad you participated in this program? Yes, or YES!
  - ▶ iii) Are you more likely to attend school because of this program? Yes, or does not apply to me
- ▶ **96%** of participants said they were glad they participated in the program.
- ▶ **93%** of participants said the program was important or very important to them.
- ▶ **90%** of participants said they were more likely to attend school because of the program.

# Performance Measure C

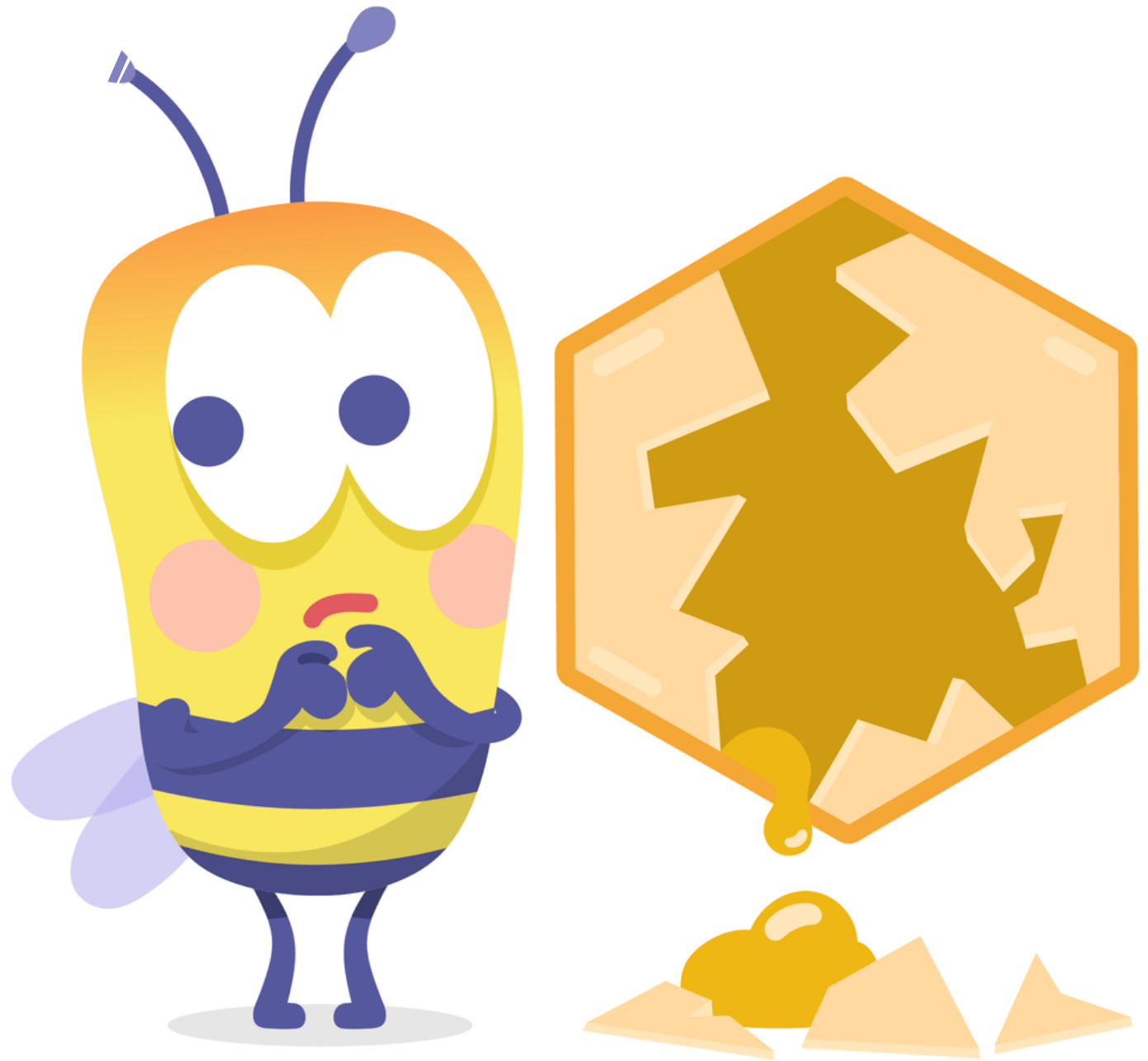
---

- ▶ A minimum of 50 students or 15% of the student population served with full interventions.
- ▶ Last year, **61** sites met/exceeded the performance measure. We are excited to see this improvement from past years and continue working with ESD's around this measure.

# Questions?

Break

---



# April is Child Abuse Prevention Month

---

Isaac Wulff | Prevention System Manager | HCA/DBHR



# April: Child Abuse Prevention Month



Washington State Department of  
**CHILDREN, YOUTH & FAMILIES**

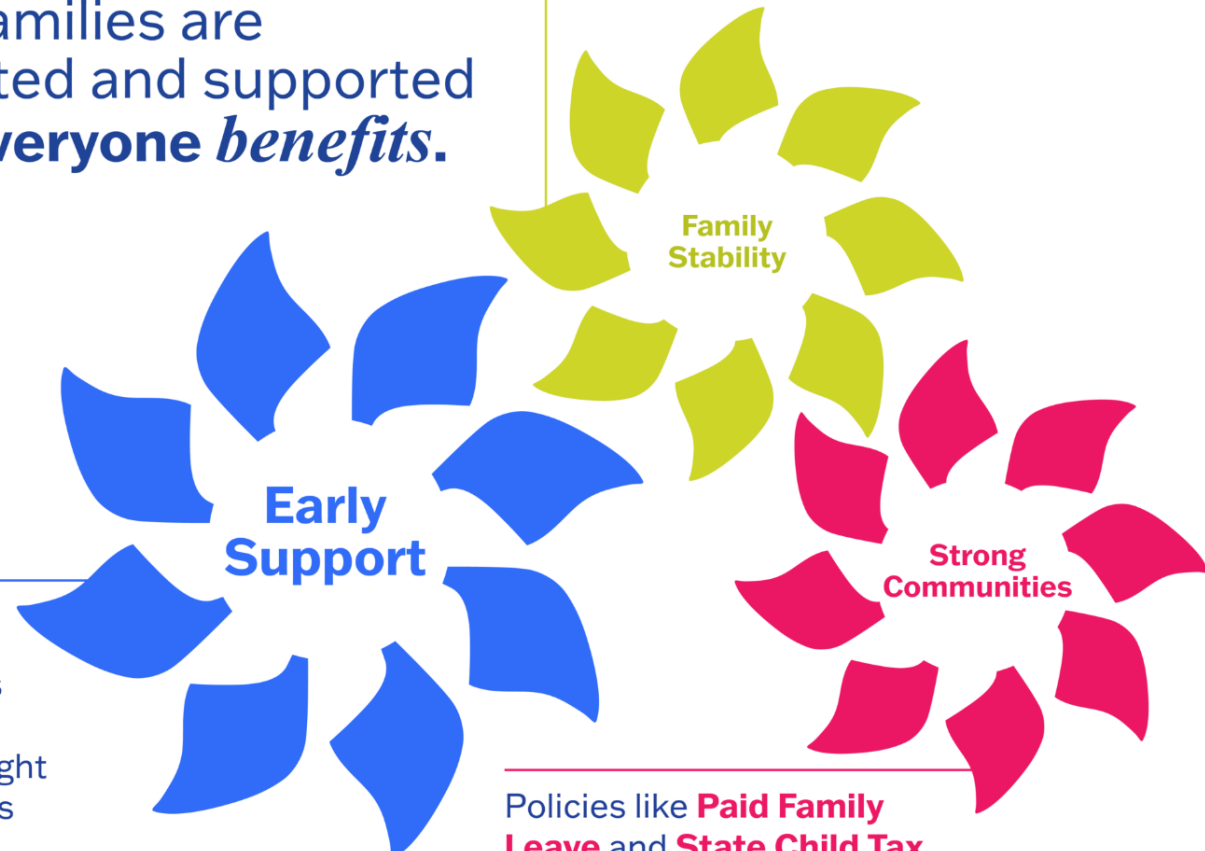
# Pinwheels of **POSSIBILITY**

CAP MONTH 2026

When families are connected and supported early, *everyone benefits.*

Families with young children are **27% less likely**

to experience homelessness when they participate in home visiting support.



**48%**

fewer infants are born at low birth weight when families receive early home visiting support.

Policies like **Paid Family Leave** and **State Child Tax Credits** reduce reports of neglect and abuse.

 **Prevent Child Abuse Washington**  
Centering families through every turn.

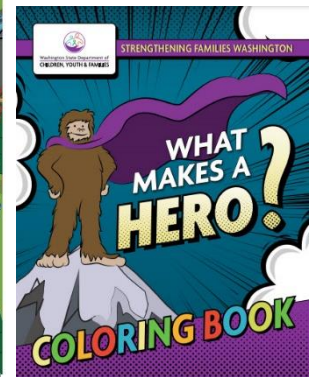
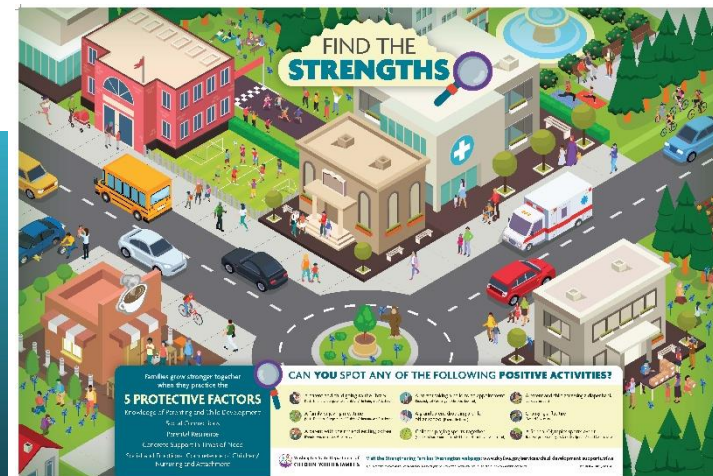
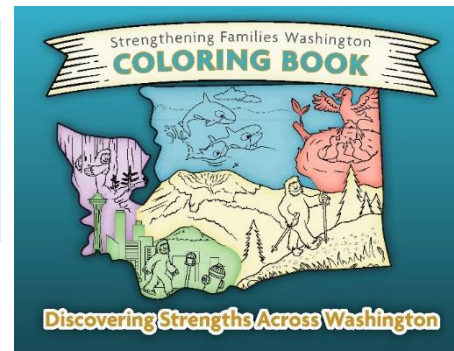
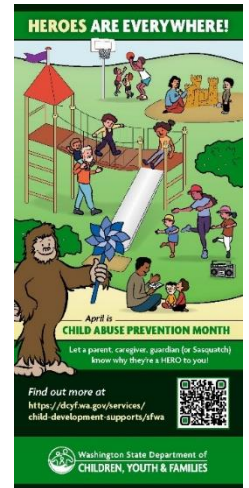
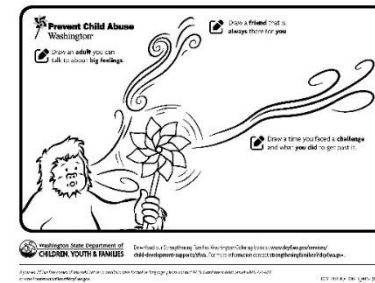


Washington State Department of  
**CHILDREN, YOUTH & FAMILIES**

# CAP Month Activities & Resources



- [Pinwheels & Coloring Books Ordering through DES](#)
- Email: [Strengtheningfamilies@dcyf.wa.gov](mailto:Strengtheningfamilies@dcyf.wa.gov) for the following materials:
  - Stickers
  - Yard Signs
  - Posters
  - Activity Packets
- April 10 is Wear Blue Day



Washington State Department of  
**CHILDREN, YOUTH & FAMILIES**

Please email: [Strengtheningfamilies@dcyf.wa.gov](mailto:Strengtheningfamilies@dcyf.wa.gov) to order materials!

# Child Abuse Prevention Month – Ordering Info

- **A few things to note:**
  - You will need to create a MyPrint account to purchase the pinwheels.
  - If your organization is tax exempt, there is a tax-exempt button on the website as well.
  - If you are placing an order larger than 960 (four cases) please email us so we can support you in receiving the lowest cost possible.
  - You are able to place multiple orders at once as well and send to multiple recipients if needed.
  - Please reach out to [strengtheningfamilies@dcyf.wa.gov](mailto:strengtheningfamilies@dcyf.wa.gov) if you have any questions or need help navigating the system.
- **The pricing this year will go as follows (excludes tax):**
  - 60 to 119 pinwheels - \$1.40 a piece
  - 120 to 179 pinwheels - \$1.22 a piece
  - 180 to 239 - \$1.16 - \$1.16 a piece
  - 240 or more - \$1.13 a piece
- **The proceeds from the pinwheels pay in part, for the publication and distribution of our many free materials.** This includes:
  - Many of the materials in our [Child Abuse Prevention Month Digital Media Kit](#)
  - [Have a Plan](#)
  - [Safe Sleep](#)



# Don't Sleep on Teen Gambling: An Essential Part of the New Prevention Landscape

---

Jeremy Whitaker, EdD, MPH | Problem Gambling Prevention Coordinator  
HCA/DBHR

# Take Care

---

