

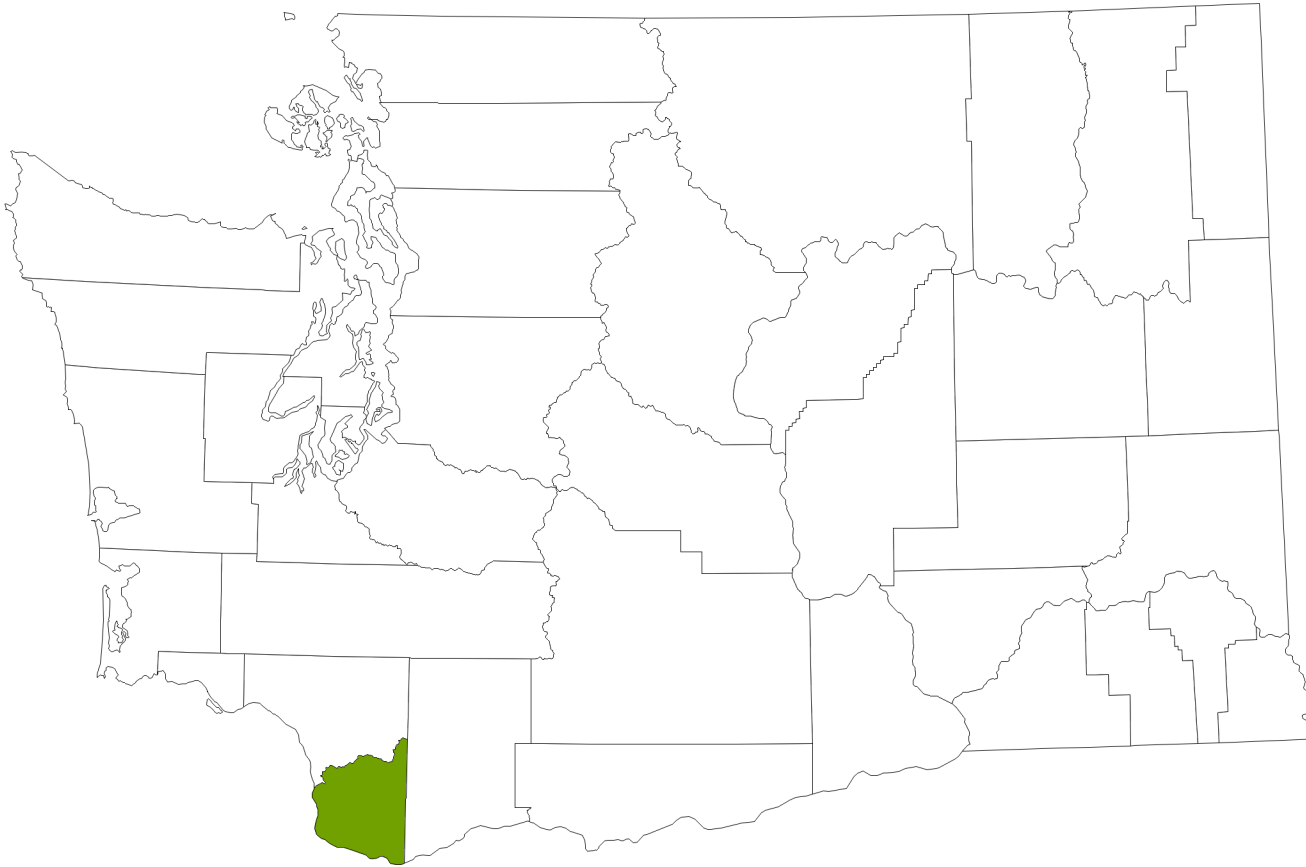
# 2024 Community Risk Profile Summary

## Clark County

May 2024

### Indicators associated with substance use prevention and mental health promotion.

Presented at the State, County, and School District level for use by communities in directing their resources and in seeking additional funding.



### CONTRIBUTORS

DSHS Research and Data Analysis Division: Aaron Starks, MA | Grace Hong, PhD | Irina Sharkova, PhD | Stephen Leibenguth

In collaboration with the HCA Division of Behavioral Health and Recovery, Substance Use Disorder Prevention and Mental Health Promotion Section:

Kasey Kates, MSW, Policy and Program Supervisor | Sandy Salivaras, MSc, MPH, Epidemiological Prevention Research and Evaluation Manager | Sarah Mariani, CPP, Section Manager

## **ABOUT THIS REPORT**

This summary report has been developed for the Community Prevention and Wellness Initiative (CPWI) to assist coalitions in their prevention strategic planning. We have included data from your county, presented by school district, for the assessment of problems associated with substance use. This report is intended to serve as a starting point for your planning and assessment work. Additional data that can only be collected locally will help with the interpretation of the data and in other ways enhance this assessment process.

The Community Prevention and Wellness Initiative is a project of the Health Care Authority's Division of Behavioral Health and Recovery (DBHR) in collaboration with the Office of the Superintendent of Schools (OSPI). The Department of Social and Health Services' Division of Research and Data Analysis is a key partner that leads the publication of this report and the associated data.

## **ABOUT THE DATA**

The CORE contains archival indicators (or social indicators) that are highly correlated with adolescent substance use, and the risk factors that predict substance use. There are currently 47 indicators, most of which originate from the Department of Health, Department of Social and Health Services, Uniform Crime Report/National Incident-Based Reporting System, and the Office of the Superintendent of Public Instruction. The data are published twice a year on a public website, and reported at the lowest feasible geography level: state, county, school district/community, and locale (a geography that incorporates more than one school district when the base population of the school district is too low for reliable reporting). See <https://www.dshs.wa.gov/ffa/research-and-data-analysis/community-risk-profiles>.

The Risk Rankings table(s) and maps have been developed using the data from CORE and Healthy Youth Survey (HYS). School district-level and more detailed HYS data are password protected and require a data sharing agreement with the Department of Health. State and county reports are available to the public at AskHYS.net.

**ATTENTION! HYS 2023 and 2021 were different** from past surveys in several ways, so caution should be used when examining the long-term trends before and after the 2021 HYS:

- The pandemic likely influenced student behaviors and responses to the survey.
- There was a three-year gap (2018 to 2021) instead of the usual two-year gap - delaying the survey by a year changed the group/cohort of students being surveyed.
- The 2021 and 2023 HYS were conducted electronically while previous surveys were conducted using paper and pencil.
- Results from the 2021 HYS showed dramatic changes compared to prepandemic trends, calling for cautious interpretation. The 2023 data are beginning to provide a more complete understanding of adolescent health during and after the height of the pandemic. The 2025 survey may further clarify the impact of 2021 on students both that year and going forward.

## **FOR MORE INFORMATION**

Questions about this report or the Community Prevention and Wellness Initiative may be directed to the DBHR Training team at [PxTraining@hca.wa.gov](mailto:PxTraining@hca.wa.gov).

| CLARK COUNTY      |                        | RISK RANKING      |                      | RISK CATEGORY RANK |             | CONTEXTUAL INDICATORS |                 |
|-------------------|------------------------|-------------------|----------------------|--------------------|-------------|-----------------------|-----------------|
| School District   | Population: Age 10-17* | Rank for Variable | Indicators with Data | ATMO Consumption   | Consequence | Economic Deprivation  | Troubled Family |
| Battle Ground     | 10,290                 | 71                | 13                   | High               | Average     | Low                   | Low             |
| Camas             | 4,555                  | 8                 | 22                   | Low                | Low         | Very Low              | Very Low        |
| Evergreen (Clark) | 17,876                 | 50                | 22                   | Average            | Average     | Average               | Average         |
| Hockinson         | 1,542                  | 24                | 22                   | Average            | Low         | Very Low              | Very Low        |
| Lacenter          | 1,144                  | 30                | 22                   | Low                | Average     | Low                   | Low             |
| Ridgefield        | 2,196                  | 27                | 22                   | Low                | Average     | Low                   | Low             |
| Washougal         | 2,383                  | 51                | 22                   | Average            | Average     | Average               | Average         |

**NOTES:**

\* This is a 5-year average value.

**This risk profile reflects the risk levels of this county as of May 2024. School districts with no high schools are not included in this summary. Please note risk levels and risk rankings may change over time.**

The ATMO consumption risk score is calculated from prevalence of alcohol, tobacco, marijuana, and prescription opioids use. The consequence risk score is calculated from school performance, youth delinquency, and mental health indicators. The overall risk ranking is not computed if either consumption or consequence score is missing.

A Risk Category Rank of "Very High" indicates the referenced School District Risk Score was in the top 10% of School Districts in the risk category.

A Risk Category Rank of "High" indicates the referenced School District Risk Score was in the top 25% of School Districts in the risk category.

A Risk Category Rank of "Average" indicates the referenced School District Risk Score was between 25% and 75% of School Districts in the risk category.

A Risk Category Rank of "Low" indicates the referenced School District Risk Score was in the bottom 25% of School Districts in the risk category.

A Risk Category Rank of "Very Low" indicates the referenced School District Risk Score was in the bottom 10% of School Districts in the risk category.

**Review Considerations**

1) To get an overall sense of risk severity for both consumption and consequence, examine the "Risk Percentile". It reflects what % of School District had a Risk Score LOWER than the referenced School District.

2) To ensure that the risk score is meaningful, examine the "Indicators with data" column. Risk scores based on few indicators should be interpreted with caution. In total, 22 indicators were used.

3) To consider other contextual information, examine the "Population: Age 10-17", "economic deprivation" indicator, and the "troubled family" indicator. Note the "Population 10-17 year olds" value may be greater than district enrollment as it accounts for kids not in school as well as those in private schools.

**ATTENTION! HYS 2023 and 2021 were different** from past surveys in several ways, so caution should be used when examining the long-term trends before and after the 2021 HYS:

- The pandemic has likely influenced student behaviors and responses to the survey.
- There was a three-year gap (2018 to 2021) instead of the usual two-year gap - delaying the survey by a year changed the group/cohort of students being surveyed.
- The 2021 and 2023 HYS were conducted electronically while previous surveys were conducted using paper and pencil.
- Results from the 2021 HYS showed dramatic changes compared to prepandemic trends, calling for cautious interpretation. The 2023 data are beginning to provide a more complete understanding of adolescent health during and after the height of the pandemic. The 2025 survey may further clarify the impact of 2021 on students both that year and going forward.

| VANCOUVER PUBLIC SCHOOLS |                        | RISK RANKING      |                      | RISK CATEGORY RANK |             | CONTEXTUAL INDICATORS |                 |
|--------------------------|------------------------|-------------------|----------------------|--------------------|-------------|-----------------------|-----------------|
| School District          | Population: Age 10-17* | Rank for Variable | Indicators with Data | ATMO Consumption   | Consequence | Economic Deprivation  | Troubled Family |
| Columbia River HS        | 2,677                  | 23                | 22                   | Average            | Low         | Average               | Low             |
| Fort Vancouver HS        | 6,465                  | 57                | 13                   | Average            | Average     | Very High             | High            |
| Hudson's Bay HS          | 5,337                  | 79                | 22                   | High               | Average     | High                  | High            |
| Skyview HS               | 6,864                  | 11                | 22                   | Low                | Very Low    | Average               | Low             |

**NOTES:**

\* This is a 5-year average value.

**This risk profile reflects the risk levels of this county as of May 2024. Please note risk levels and risk rankings may change over time.**

The ATMO consumption risk score is calculated from prevalence of alcohol, tobacco, marijuana, and prescription opioids use. The consequence risk score is calculated from school performance, youth delinquency, and mental health indicators. The overall risk ranking is not computed if either consumption or consequence score is missing.

A Risk Category Rank of "Very High" indicates the referenced High School Risk Score was in the top 10% of High Schools in the risk Category.

A Risk Category Rank of "High" indicates the referenced High School Risk Score was in the top 25% of High Schools in the risk Category.

A Risk Category Rank of "Average" indicates the referenced High School Risk Score was between 25% and 75% of High Schools in the risk Category.

A Risk Category Rank of "Low" indicates the referenced High School Risk Score was in the bottom 25% of High Schools in the risk Category.

A Risk Category Rank of "Very Low" indicates the referenced High School Risk Score was in the bottom 10% of High Schools in the risk Category.

**Review Considerations**

1) To get an overall sense of risk severity for both consumption and consequence, examine the "Risk Percentile". It reflects what % of High Schools had a Risk Score LOWER than the referenced High School.

2) To ensure that the risk score is meaningful, examine the "Indicators with data" column. Risk scores based on few indicators should be interpreted with caution. In total, 22 indicators were used.

3) To consider other contextual information, examine the "Population: Age 10-17", "economic deprivation" indicator, and the "troubled family" indicator. Note the "Population 10-17 year olds" value may be greater than district enrollment as it accounts for kids not in school as well as those in private schools.

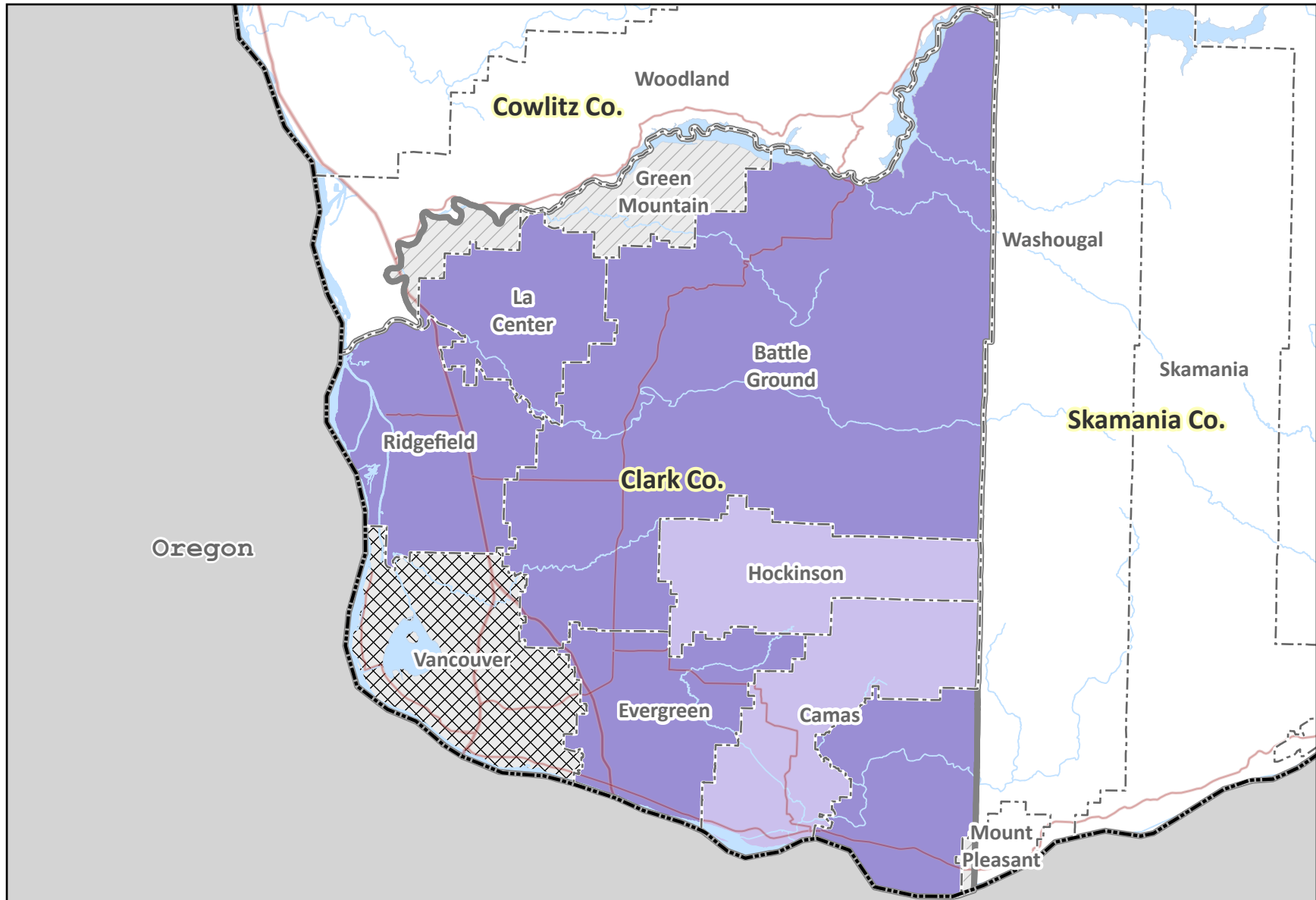
**ATTENTION! HYS 2023 and 2021 were different** from past surveys in several ways, so caution should be used when examining the long-term trends before and after the 2021 HYS:

- The pandemic has likely influenced student behaviors and responses to the survey.
- There was a three-year gap (2018 to 2021) instead of the usual two-year gap - delaying the survey by a year changed the group/cohort of students being surveyed.
- The 2021 and 2023 HYS were conducted electronically while previous surveys were conducted using paper and pencil.
- Results from the 2021 HYS showed dramatic changes compared to prepandemic trends, calling for cautious interpretation. The 2023 data are beginning to provide a more complete understanding of adolescent health during and after the height of the pandemic. The 2025 survey may further clarify the impact of 2021 on students both that year and going forward.



# Marijuana Composite Ranking

by School District, Clark County



**Composite Risk Ranking**

|                   |                 |                 |               |          |                  |                          |
|-------------------|-----------------|-----------------|---------------|----------|------------------|--------------------------|
| Very High 90 - 99 | High 75 - 89    | Average 25 - 74 | Low 10 - 24   | No data  | School Districts | Highways and Major Roads |
| Very High 90 - 99 | Average 25 - 74 | Very Low 0 - 9  | See HSAA maps | Counties | Water Bodies     |                          |



Transforming lives

**DATA NOTES:** The percentile of the composite risk scores. The composite risk scores were calculated using standardized indicators in marijuana consumption and consequence. Based on 2023 HYS data. CARTOGRAPHY: Irina Sharkova and Steve Leibenguth.

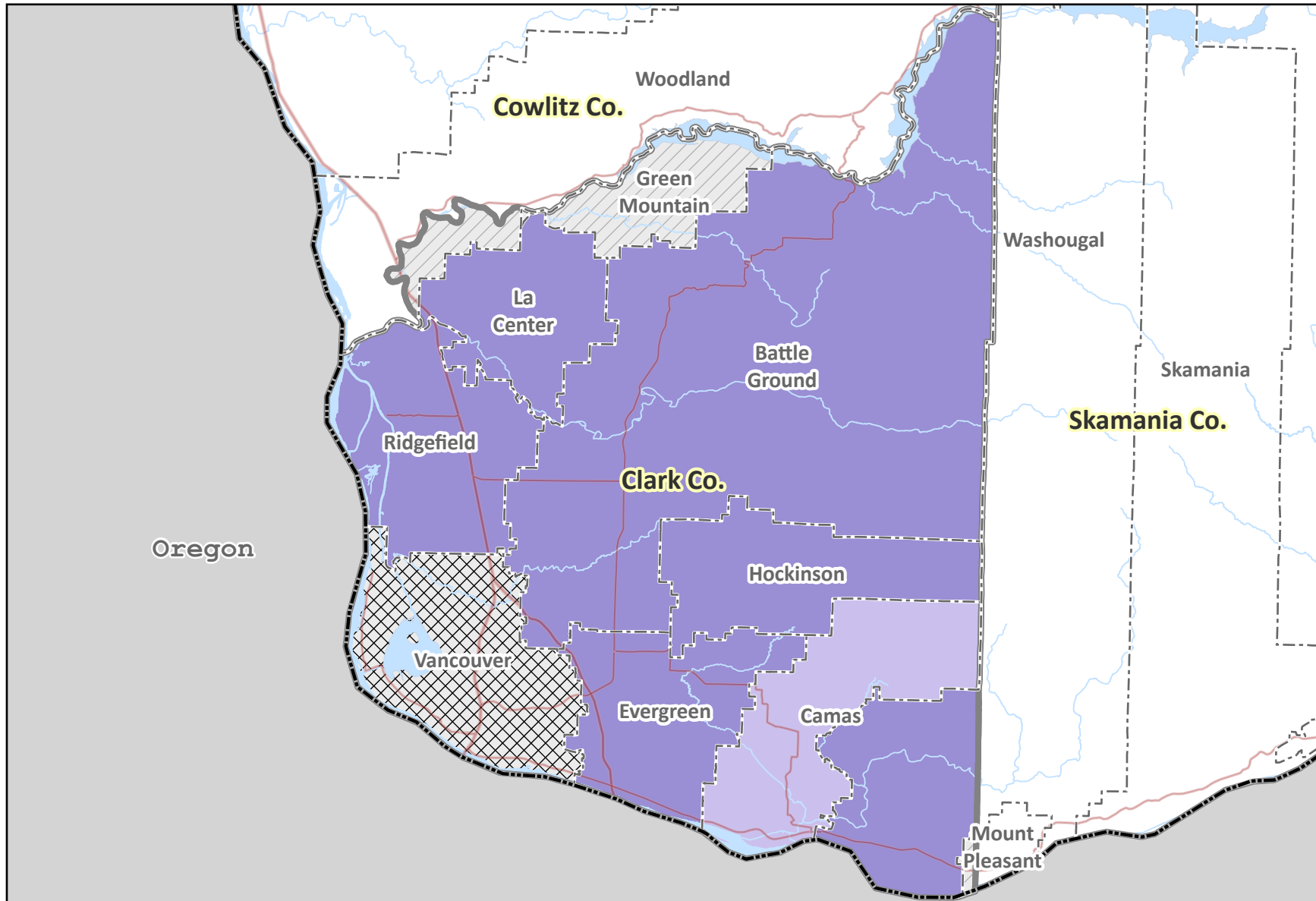
**SOURCE:** DSHS Research and Data Analysis, Community Outcome and Risk Evaluation Geographic Information System (COREGIS).



May 2024

# Marijuana Consumption Ranking

by School District, Clark County



**Consumption Risk Ranking**

|   |  |  |  |   |   |   |   |  |   |
|---|--|--|--|---|---|---|---|--|---|
| <span style="display:inline-block; width:15px; height:15px; background-color:darkblue;"></span> Very High 90 - 99 | <span style="display:inline-block; width:15px; height:15px; background-color:blue;"></span> High 75 - 89 | <span style="display:inline-block; width:15px; height:15px; background-color:lightblue;"></span> Average 25 - 74 | <span style="display:inline-block; width:15px; height:15px; background-color:lightpurple;"></span> Low 10 - 24 | <span style="display:inline-block; width:15px; height:15px; border:1px dashed black;"></span> No data | <span style="display:inline-block; width:15px; height:15px; border:1px dashed black;"></span> See HSAA maps | <span style="display:inline-block; width:15px; height:15px; border:1px solid black;"></span> School Districts | <span style="display:inline-block; width:15px; height:15px; border:1px solid black;"></span> Counties | <span style="display:inline-block; width:15px; height:15px; border-bottom:1px solid red;"></span> Highways and Major Roads | <span style="display:inline-block; width:15px; height:15px; background-color:lightblue;"></span> Water Bodies |
|---|--|--|--|---|---|---|---|--|---|



Transforming lives

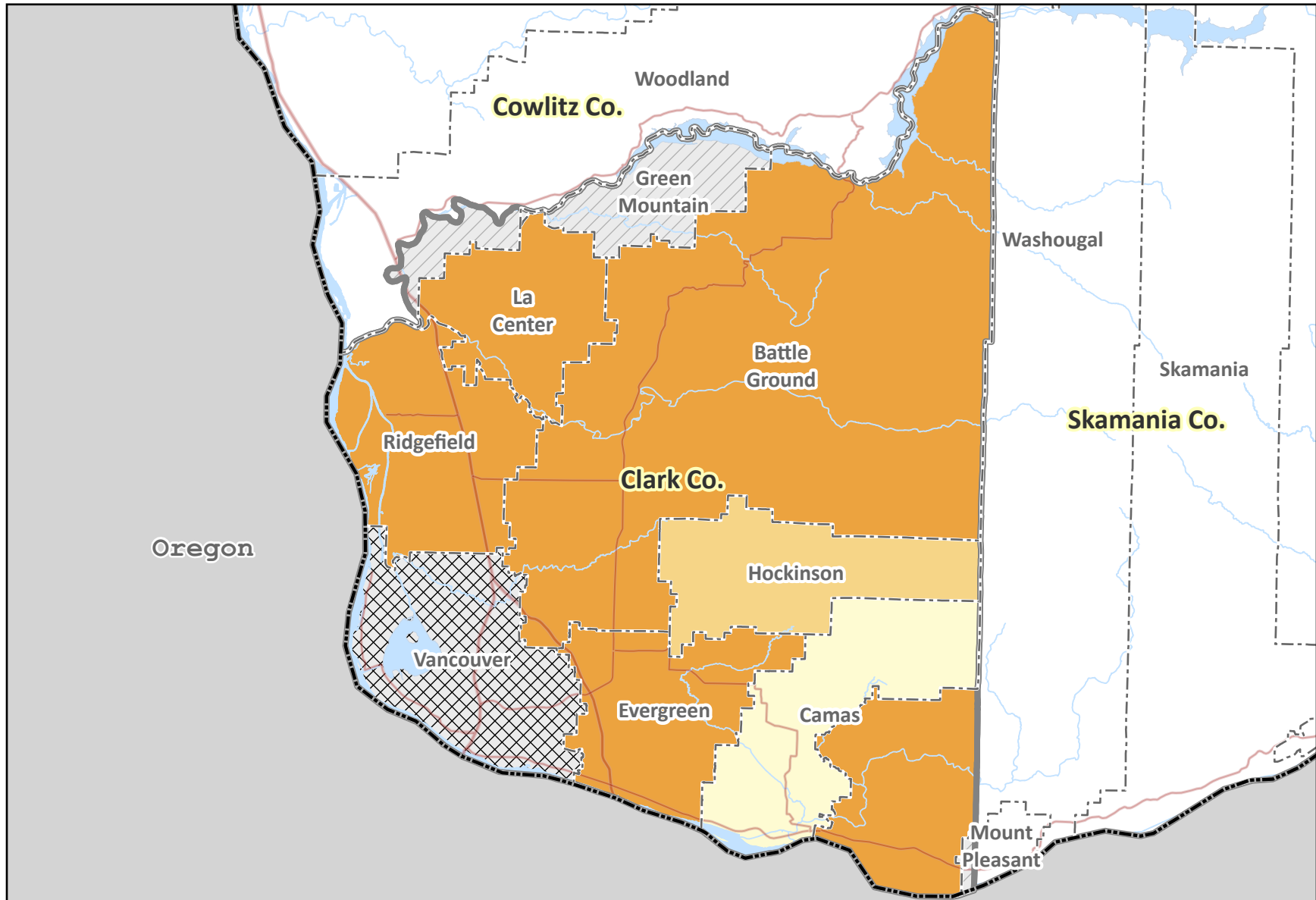
**DATA NOTES:** The percentile of the consumption risk scores. The composite risk scores were calculated using standardized indicators in marijuana consumption. Based on 2023 HYS data. CARTOGRAPHY: Irina Sharkova and Steve Leibenguth.

**SOURCE:** DSHS Research and Data Analysis, Community Outcome and Risk Evaluation Geographic Information System (COREGIS).



May 2024

# Alcohol, Tobacco, Marijuana and Prescription Opioids Composite Ranking by School District, Clark County



**Composite Risk Ranking**

|   |  |  |   |  |  |  |  |  |  |   |
|---|--|--|---|--|--|--|--|--|--|---|
| <span style="display:inline-block; width:15px; height:15px; background-color:darkorange;"></span> Very High 90 - 99 | <span style="display:inline-block; width:15px; height:15px; background-color:orange;"></span> High 75 - 89 | <span style="display:inline-block; width:15px; height:15px; background-color:lightorange;"></span> Average 25 - 74 | <span style="display:inline-block; width:15px; height:15px; background-color:yellow;"></span> Low 10 - 24 | <span style="display:inline-block; width:15px; height:15px; background-color:paleyellow;"></span> Very Low 0 - 9 | <span style="display:inline-block; width:15px; height:15px; border:1px dashed gray;"></span> No data | <span style="display:inline-block; width:15px; height:15px; border:1px dashed gray;"></span> See HSAA maps | <span style="display:inline-block; width:15px; height:15px; border:1px solid gray;"></span> School Districts | <span style="display:inline-block; width:15px; height:15px; border:1px solid gray;"></span> Counties | <span style="display:inline-block; width:15px; height:15px; border-bottom:1px solid red;"></span> Highways and Major Roads | <span style="display:inline-block; width:15px; height:15px; background-color:lightblue;"></span> Water Bodies |
|---|--|--|---|--|--|--|--|--|--|---|

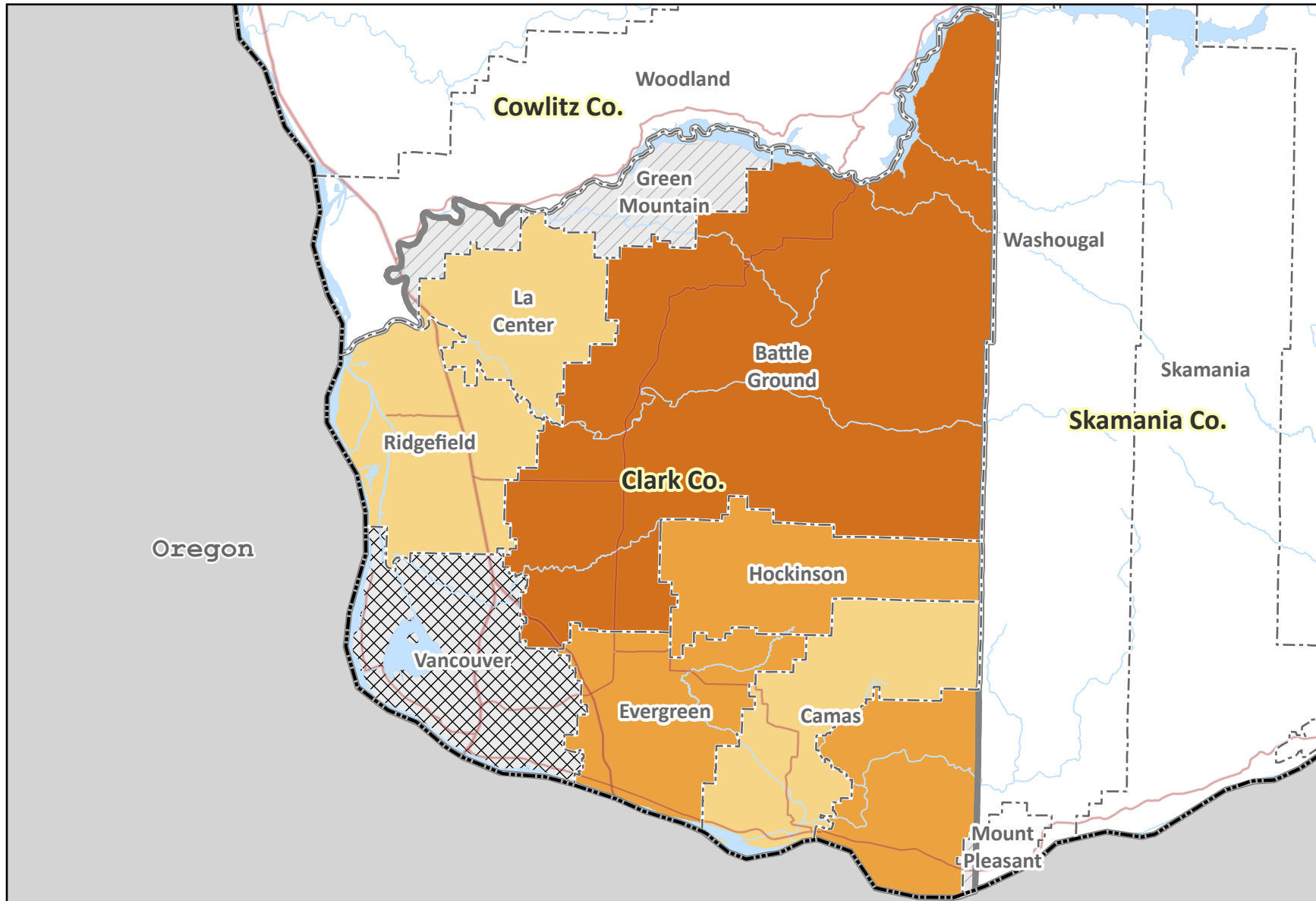


**DATA NOTES:** The percentile of the composite risk scores. The composite risk scores were calculated using standardized indicators in the alcohol, tobacco, marijuana and prescription opioids (ATMO) consumption and consequence. Based on 2023 HYS data. CARTOGRAPHY: Irina Sharkova and Steve Leibenguth.



**SOURCE:** DSHS Research and Data Analysis, Community Outcome and Risk Evaluation Geographic Information System (COREGIS).

# Alcohol, Tobacco, Marijuana and Prescription Opioids Consumption Ranking by School District, Clark County



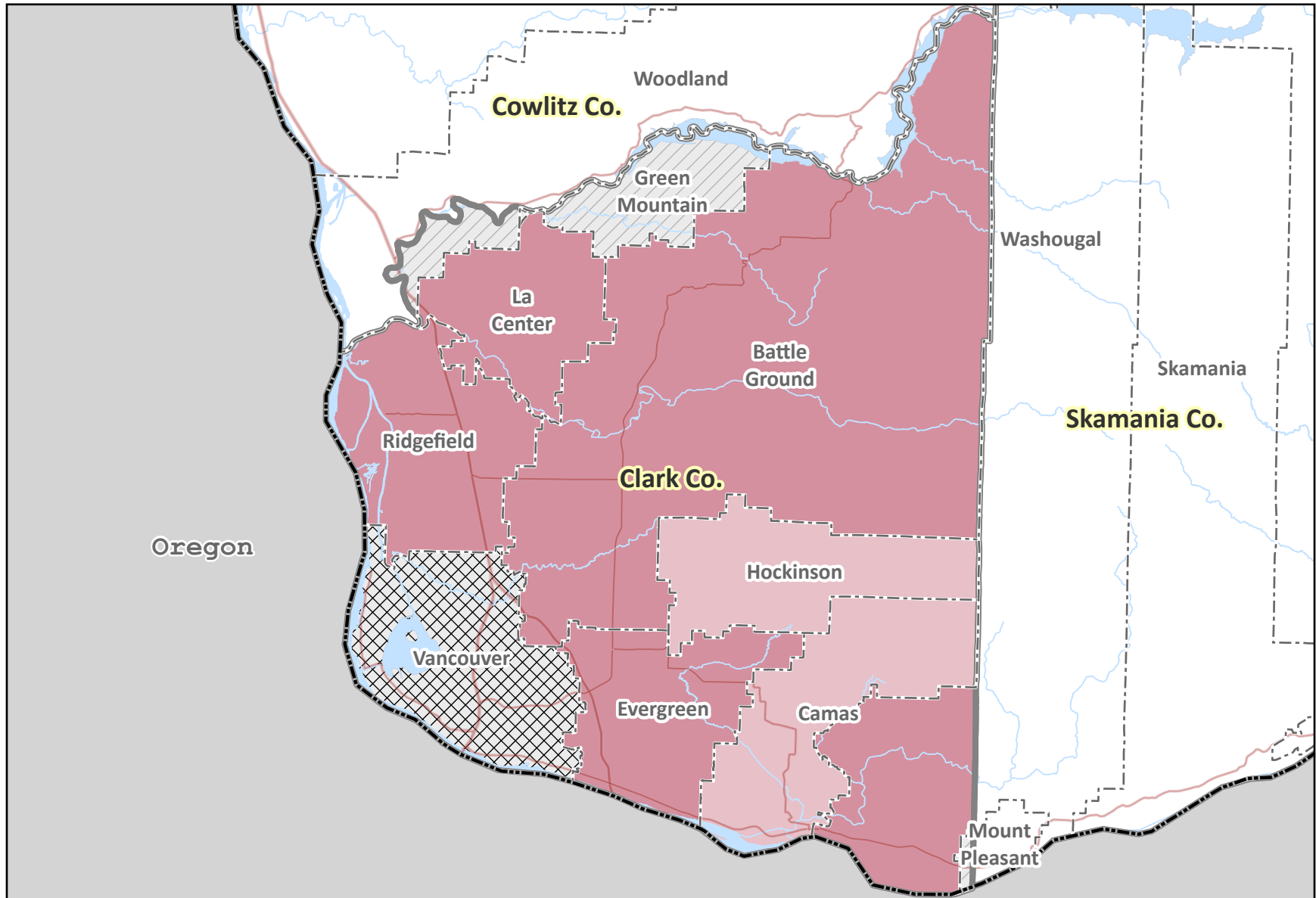
**Consumption Risk Ranking**

|   |  |  |   |  |  |   |  |  |  |   |
|---|--|--|---|--|--|---|--|--|--|---|
| <span style="display:inline-block; width:15px; height:15px; background-color:darkorange;"></span> Very High 90 - 99 | <span style="display:inline-block; width:15px; height:15px; background-color:orange;"></span> High 75 - 89 | <span style="display:inline-block; width:15px; height:15px; background-color:lightorange;"></span> Average 25 - 74 | <span style="display:inline-block; width:15px; height:15px; background-color:yellow;"></span> Low 10 - 24 | <span style="display:inline-block; width:15px; height:15px; background-color:paleyellow;"></span> Very Low 0 - 9 | <span style="display:inline-block; width:15px; height:15px; border:1px dashed gray;"></span> No Data | <span style="display:inline-block; width:15px; height:15px; border:1px dashed gray;"></span> See HSA maps | <span style="display:inline-block; width:15px; height:15px; border:1px solid gray;"></span> School Districts | <span style="display:inline-block; width:15px; height:15px; border:1px solid gray;"></span> Counties | <span style="display:inline-block; width:15px; height:15px; border-bottom:1px solid red;"></span> Highways and Major Roads | <span style="display:inline-block; width:15px; height:15px; background-color:lightblue;"></span> Water Bodies |
|---|--|--|---|--|--|---|--|--|--|---|

**DATA NOTES:** The percentile of the consumption risk scores. The consumption risk scores were calculated using standardized indicators in the alcohol, tobacco, marijuana and prescription opioids (ATMO) consumption. Based on 2024 HYS data. CARTOGRAPHY: Irina Sharkova and Steve Leibenguth.

**SOURCE:** DSHS Research and Data Analysis, Community Outcome and Risk Evaluation Geographic Information System (COREGIS).

# Consequence Risk Ranking by School District, Clark County

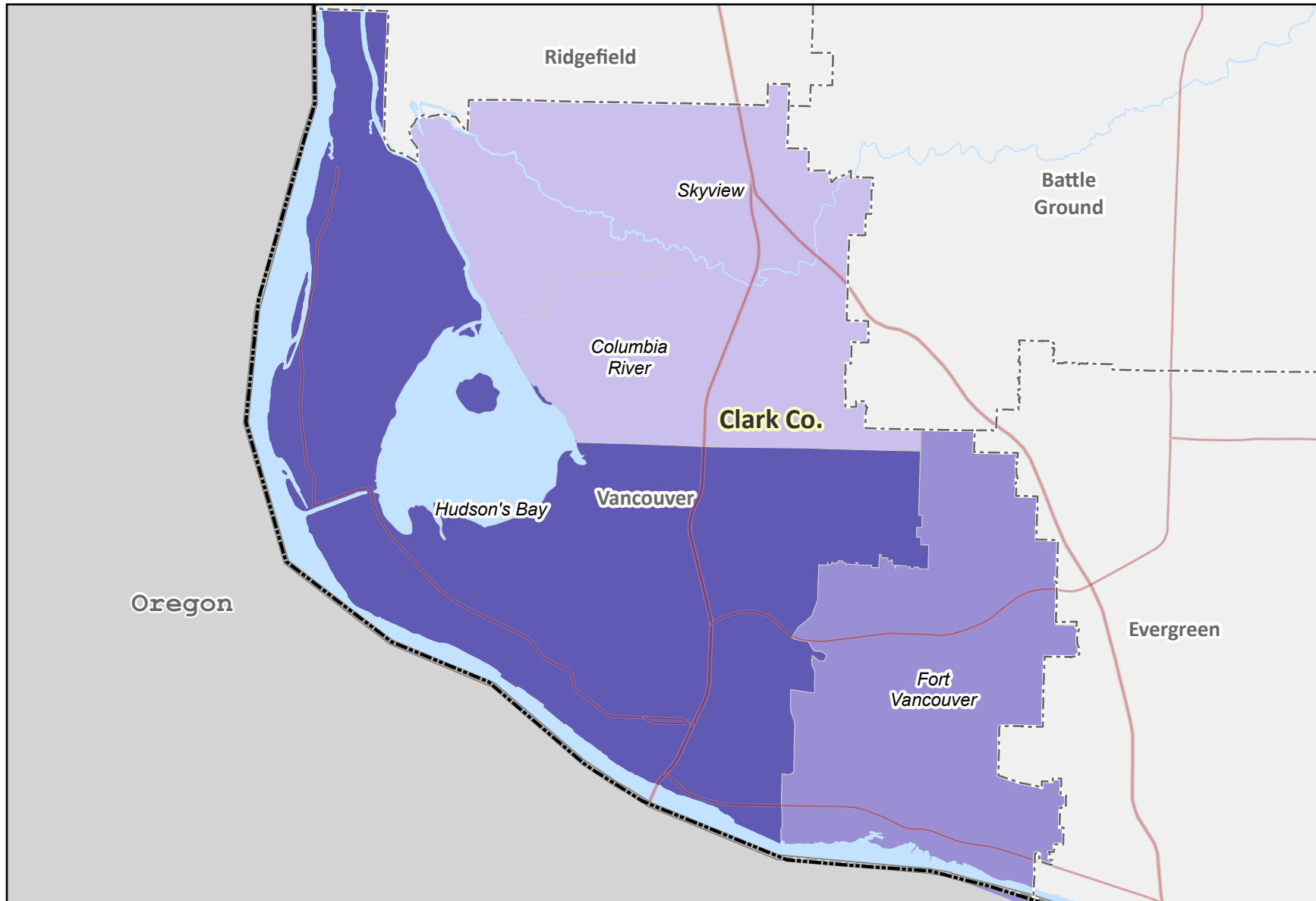


**Consequence Risk Ranking**

|   |   |  |  |   |  |   |  |   |
|---|---|--|--|---|--|---|--|---|
| <span style="display:inline-block; width:15px; height:15px; background-color:#800000;"></span> Very High 90 - 99  | <span style="display:inline-block; width:15px; height:15px; background-color:#C00000;"></span> High 75 - 89 | <span style="display:inline-block; width:15px; height:15px; background-color:#E06666;"></span> Average 25 - 74 | <span style="display:inline-block; width:15px; height:15px; background-color:#F0C0C0;"></span> Low 10 - 24 | <span style="display:inline-block; width:15px; height:15px; border:1px dashed black;"></span> No Data | <span style="display:inline-block; width:15px; height:15px; border:1px dashed black;"></span> School Districts | <span style="display:inline-block; width:15px; height:15px; border:2px solid black;"></span> Counties | <span style="display:inline-block; width:15px; height:15px; border-bottom:2px solid red;"></span> Highways and Major Roads | <span style="display:inline-block; width:15px; height:15px; background-color:lightblue;"></span> Water Bodies |
| <span style="display:inline-block; width:15px; height:15px; background-image: repeating-linear-gradient(45deg, transparent, transparent 2px, black 2px, black 4px);"></span> See HSA maps |   |  |  |   |  |   |  |   |

# Marijuana Composite Ranking

## by High School Attendance Area, Vancouver Public Schools



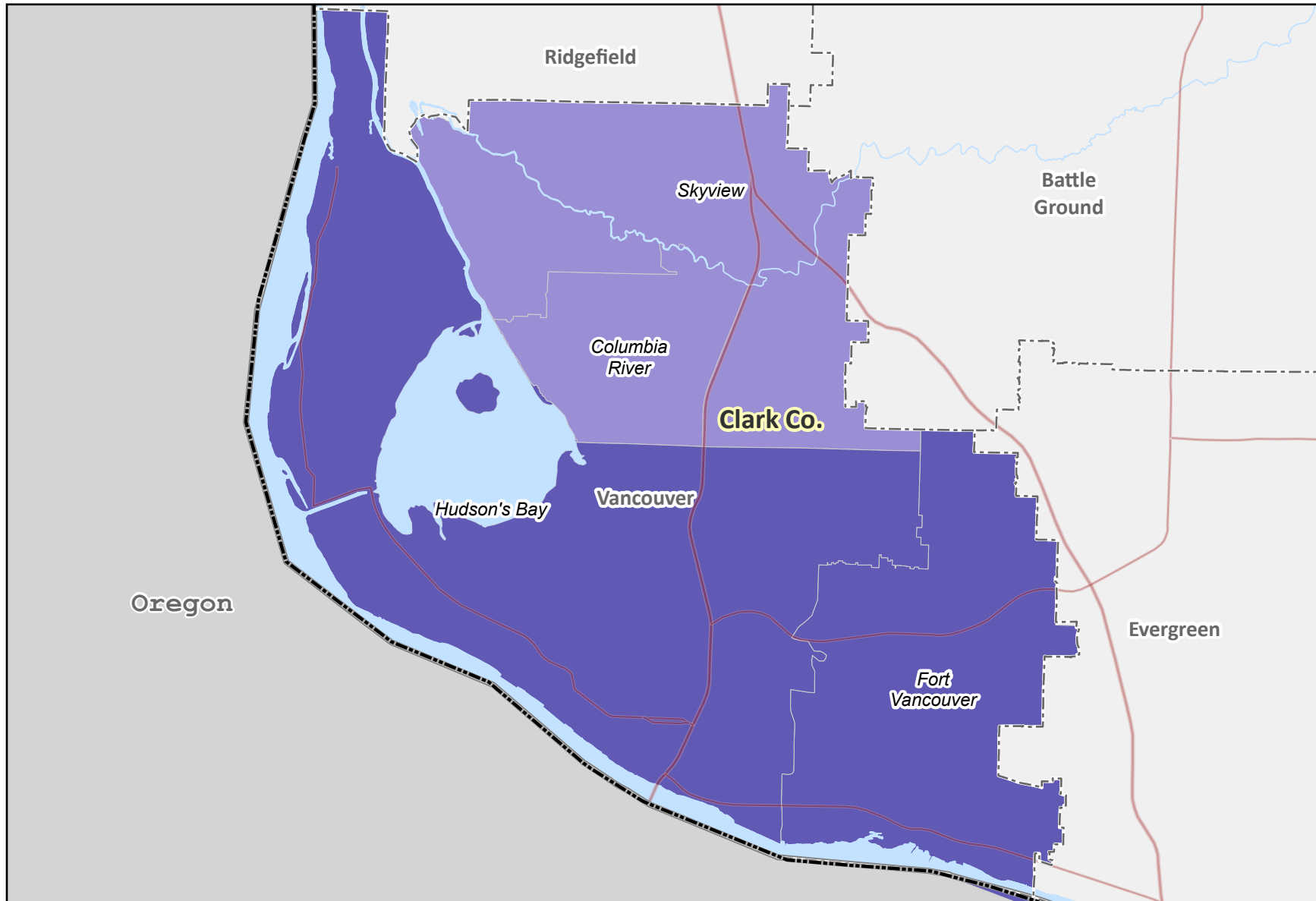
**Composite Risk Ranking**

|                   |              |                 |             |                |          |                  |                          |
|-------------------|--------------|-----------------|-------------|----------------|----------|------------------|--------------------------|
| Very High 90 - 99 | High 75 - 89 | Average 25 - 74 | Low 10 - 24 | Very Low 0 - 9 | No data  | School Districts | Highways and Major Roads |
|                   |              |                 |             |                | Counties | Water Bodies     |                          |



# Marijuana Consumption Ranking

## by High School Attendance Area, Vancouver Public Schools

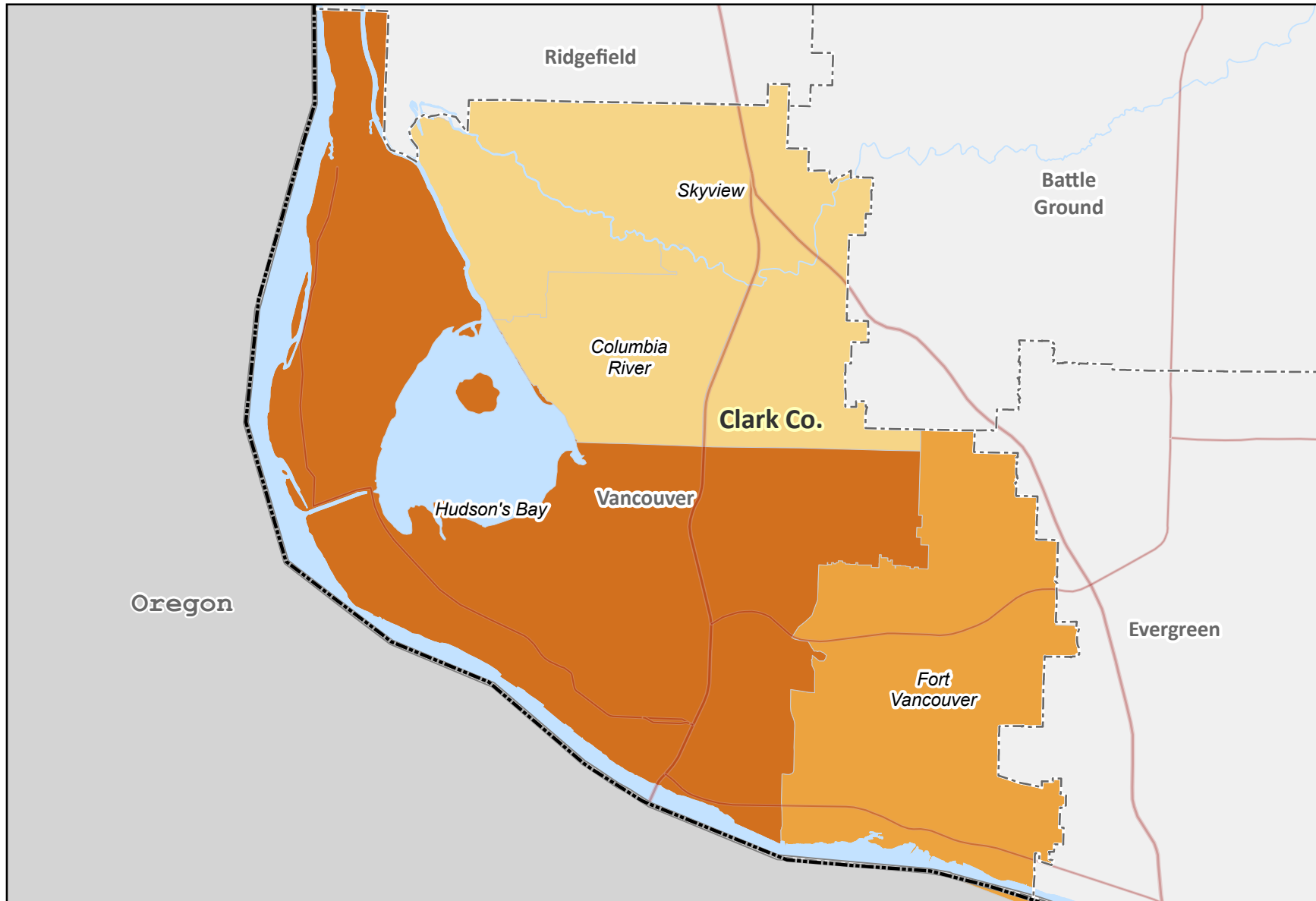


**Consumption Risk Ranking**

|                   |              |                 |                |          |                  |                          |
|-------------------|--------------|-----------------|----------------|----------|------------------|--------------------------|
| Very High 90 - 99 | High 75 - 89 | Average 25 - 74 | Low 10 - 24    | No data  | School Districts | Highways and Major Roads |
|                   |              |                 | Very Low 0 - 9 | Counties | Water Bodies     |                          |

# Alcohol, Tobacco, Marijuana and Prescription Opioids Composite Ranking

## by High School Attendance Area, Vancouver Public Schools



**Composite Risk Ranking**

|                   |              |                 |             |                |          |                  |                          |
|-------------------|--------------|-----------------|-------------|----------------|----------|------------------|--------------------------|
| Very High 90 - 99 | High 75 - 89 | Average 25 - 74 | Low 10 - 24 | Very Low 0 - 9 | No data  | School Districts | Highways and Major Roads |
|                   |              |                 |             |                | Counties | Water Bodies     |                          |



Transforming lives

**DATA NOTES:** The percentile of the composite risk scores. The composite risk scores were calculated using standardized indicators in the alcohol, tobacco, marijuana and prescription opioids (ATMO) consumption and consequence. Based on 2023 HYS data. CARTOGRAPHY: Irina Sharkova and Steve Leibenguth.

**SOURCE:** DSHS Research and Data Analysis, Community Outcome and Risk Evaluation Geographic Information System (COREGIS).

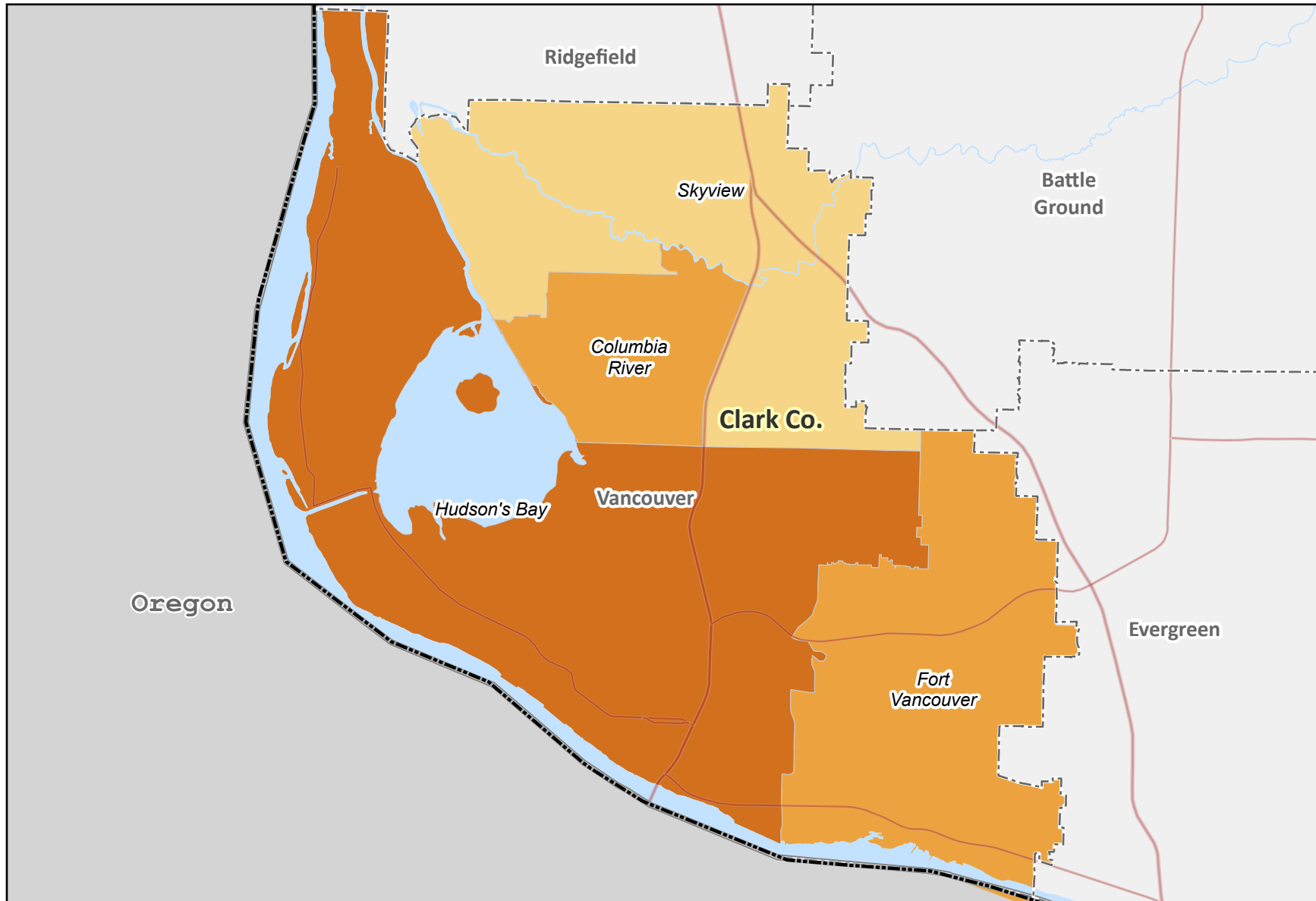


May 2024



# Alcohol, Tobacco, Marijuana and Prescription Opioids Consumption Ranking

by High School Attendance Area, Vancouver Public Schools

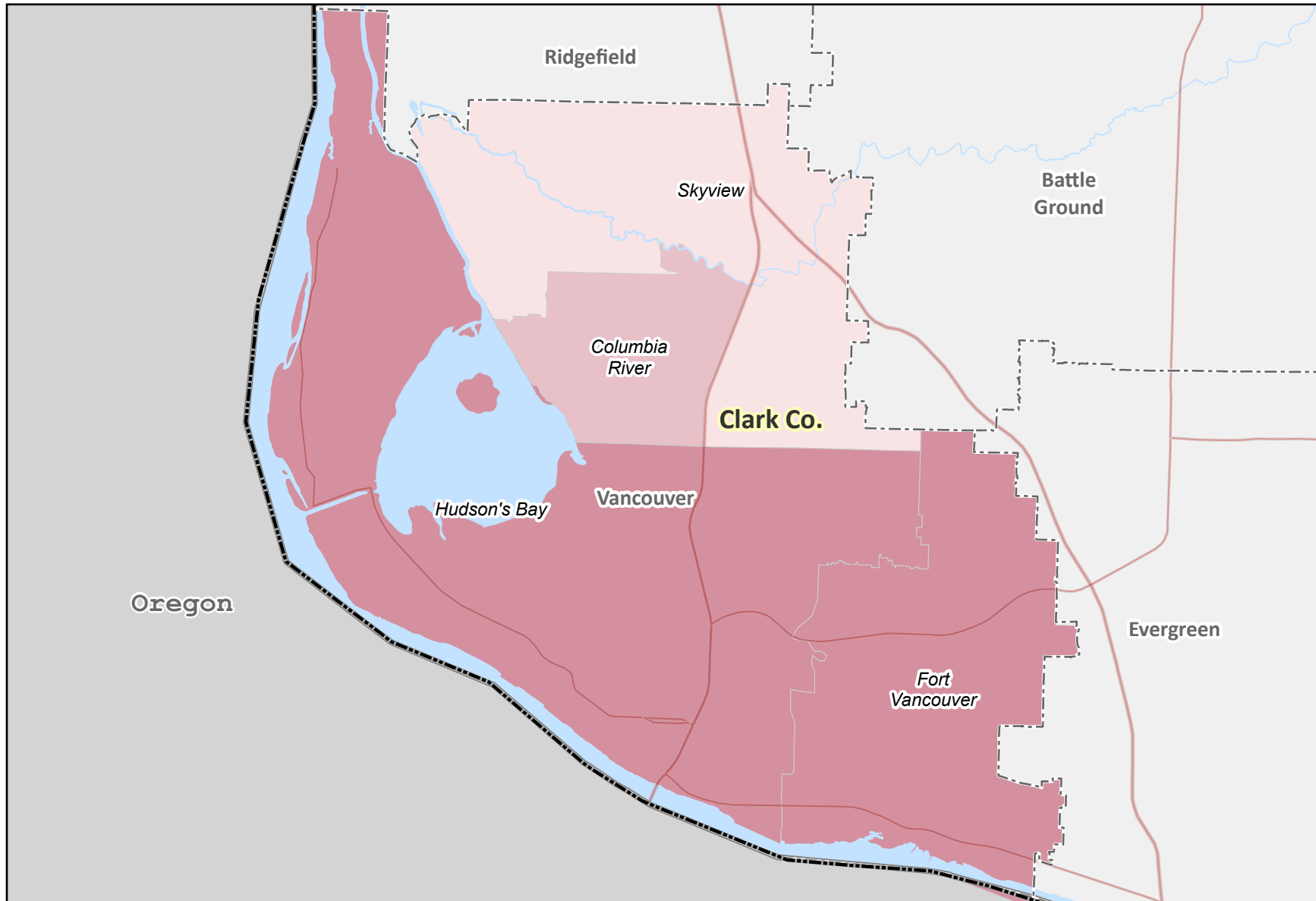


**Consumption Risk Ranking**

|                   |              |                 |                |          |                  |                          |
|-------------------|--------------|-----------------|----------------|----------|------------------|--------------------------|
| Very High 90 - 99 | High 75 - 89 | Average 25 - 74 | Low 10 - 24    | No Data  | School Districts | Highways and Major Roads |
|                   |              |                 | Very Low 0 - 9 | Counties | Water Bodies     |                          |

# Consequence Risk Ranking

## by High School Attendance Area, Vancouver Public Schools



**Consequence Risk Ranking**

|  |   |  |  |   |  |   |   |   |
|--|---|--|--|---|--|---|---|---|
| <span style="display:inline-block; width:15px; height:15px; background-color:#800000;"></span> Very High 90 - 99 | <span style="display:inline-block; width:15px; height:15px; background-color:#C00000;"></span> High 75 - 89 | <span style="display:inline-block; width:15px; height:15px; background-color:#E06666;"></span> Average 25 - 74 | <span style="display:inline-block; width:15px; height:15px; background-color:#F0C0C0;"></span> Low 10 - 24 | <span style="display:inline-block; width:15px; height:15px; border:1px dashed black;"></span> No Data | <span style="display:inline-block; width:15px; height:15px; border:1px dashed black;"></span> School Districts | <span style="display:inline-block; width:15px; height:15px; border:1px solid black;"></span> Counties | <span style="display:inline-block; width:15px; height:15px; border:1px solid black;"></span> Highways and Major Roads | <span style="display:inline-block; width:15px; height:15px; background-color:#ADD8E6;"></span> Water Bodies |
|--|---|--|--|---|--|---|---|---|

**DATA NOTES:** The percentile of the consequence risk scores. The consequence risk scores were calculated using standardized indicators in three sub-domains: school performance, youth delinquency, and mental health. Based on 2023 HYS data. CARTOGRAPHY: Irina Sharkova and Steve Leibenguth.

**SOURCE:** DSHS Research and Data Analysis, Community Outcome and Risk Evaluation Geographic Information System (COREGIS).