

COMMUNITY COALITION GUIDE

formerly Task Categories and Strategic Plan Requirements Guides

Building a Culturally Competent and Sustainable Substance Abuse Prevention Coalition in Your Community



Division of Behavioral Health and Recovery Community Prevention & Wellness Initiative (CPWI)



Transforming lives

Updated September 2014

Last revised: 9.9.14

**DBHR Community Prevention & Wellness Initiative (CPWI)
Community Coalition Guide**

Table of Contents

Chapter 1: CPWI General Information 3

Chapter 2: CPWI Key Objectives 9

Chapter 3: Implementing CPWI in Your Community 14

Chapter 4: General Information for Writing Coalition's Strategic Plan..... 26

Chapter 5: Appendix..... 40



CHAPTER 1: CPWI GENERAL INFORMATION

Section Contents

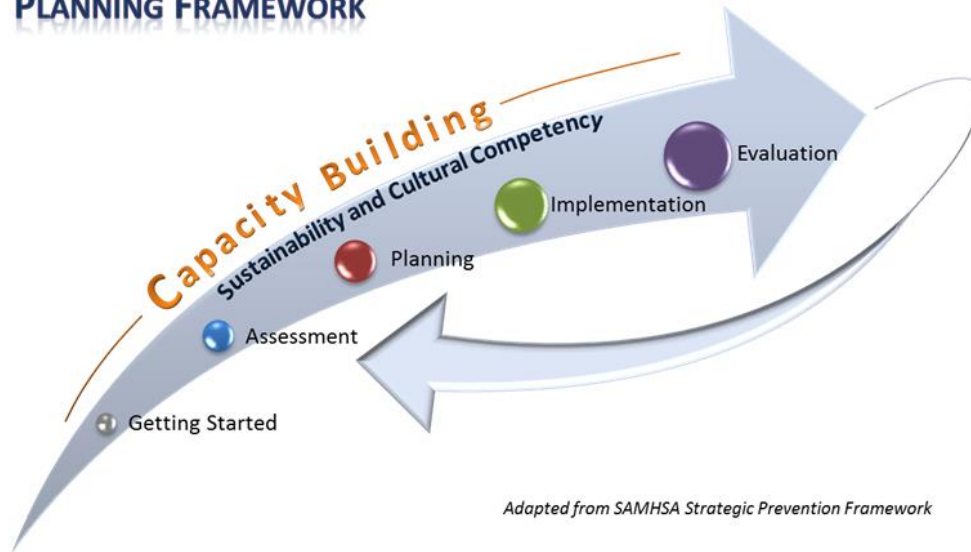
CPWI General Information	4
<i>Using this Guide.....</i>	<i>4</i>
<i>Resources for Implementing CPWI</i>	<i>4</i>
<i>Technical Assistance</i>	<i>5</i>
<i>What is a Coalition?.....</i>	<i>6</i>

DBHR Community Prevention & Wellness Initiative (CPWI) Community Coalition Guide

CPWI General Information

The Community Prevention & Wellness Initiative (CPWI) uses the Strategic Prevention Framework (SPF) for planning, with two enhancements. Based on our learning from the Strategic Prevention Framework State Incentive Grant (SPF-SIG) process, we have added a “Getting Started” section and expect “Capacity Building” to be ongoing throughout the process. All tasks associated with CPWI planning must be conducted in a culturally competent manner, and include sustainability planning and implementation.

DBHR COMMUNITY PREVENTION AND WELLNESS INITIATIVE PLANNING FRAMEWORK



Using this Guide

The purpose of this guide is to provide guidance for CPWI coalitions in planning and implementing CPWI required tasks. This guide includes the following five main sections:

- **Chapter 1: General Information** – provides general information about the CPWI planning framework.
- **Chapter 2: Key Objectives** – provides an overview of the intent of CPWI and the established milestones and benchmarks.
- **Chapter 3: Implementing CPWI** – identifies the required tasks and provides guidance, definition, and clarification on each task category grouped by the CPWI Planning Framework steps.
- **Chapter 4: Strategic Plan Requirements** - provides the CPWI requirements for completing the coalition’s Strategic Plan.
- **Appendix** – provides templates and samples for use in writing your Strategic Plan and implementing CPWI.

Please note: This guide is not intended to be a comprehensive handbook for community organizing. Furthermore, as additional funding is made available to support CPWI efforts, this guide may be updated to include additional requirements and information.

Resources for Implementing CPWI

DBHR has created the following primary guidance documents and templates referenced in this Community Coalition Guide:

- **Community Coalition Guide** – includes requirements for tasks to be completed as part of CPWI. Available on Athena Forum.
- **County Risk Profile** – full reports are sent to each county to be used to identify and select high-risk communities within each county. Summary reports by county are available on Athena Forum.

DBHR Community Prevention & Wellness Initiative (CPWI) Community Coalition Guide

- **Community Selection Packet** – this set of forms is to be submitted to DBHR with information pertaining to the selection of the CPWI community. County specific forms are sent to each county by DBHR.
- **CPWI News/Media Release Template** – this template includes the general information and layout for the required press release. Included within this Guide and available on Athena Forum.
- **Coalition Assessment Tool** – this annual survey is to gather information from the coalition members about the organization and functioning of the coalition. Available in PBPS.
- **Community Survey** – this survey includes the required questions to gather local data from the community to be used as part of the needs assessment. Community specific surveys are sent to each coalition by DBHR.
- **Strategic Plan Requirements and related templates** – includes guidance on requirements, formatted outline with section headings document, budget, List of Coalition Members table, ‘Community Survey’ Results, Action Plan, and Plan-on-a-Page. Included within this Guide and available on Athena Forum.
- **Community Profile Brochure** – this template provides the layout of the brochure. Each community can add local information. Included within this Guide and available on Athena Forum.

These documents can be found at www.theAthenaForum.org; from the homepage, click on the link in the bottom right corner under “CPWI Guide.”

Many other helpful resources can also be found at www.theAthenaForum.org. We encourage you to review the information available in the CPWI Training section found under the “training tab” link from the top menu (www.theathenaforum.org/training/cpwi_trainings). We have developed resources to guide you through the steps and provide samples for coalition discussions and workgroups.

Technical Assistance

We are here to help!

We encourage you to actively engage your CPWI Prevention System Manager and the CPWI training team for assistance as the coalition is working through each step of the Community Coalition Guide as well as the Strategic Plan Requirements.

DBHR will provide guidance to assist the Community Coalition Coordinator in working with the coalition for completion of the Task Categories and each section of the Strategic Plan. We encourage you to use the training materials developed to assist the coalition in completing each step and building a Strategic Plan. For technical assistance, please contact your Prevention System Manager.

Sources:

Primary sources of information used in developing Task Categories: Communities That Care, CADCA, DFC grantee workshop. Coalitions and Partnerships in Community Health (Frances Dunn Butterfoss), DBHR, preliminary evaluation information from Washington and national SPF-SIG project, SAMSHA/CSA.

DBHR Community Prevention & Wellness Initiative (CPWI)

Community Coalition Guide

What is a Coalition?

A coalition is a formal arrangement for cooperation and collaboration between groups or sectors of a community. Each group retains its identity, but all agree to work together toward a common goal of building a safe, healthy, and drug-free community.

Who is a Coalition?

- Members bring the perspective of the group of people/sector they represent to the coalition and function on behalf of those they represent to carry out strategies for the local community.
- Members act within their own sphere of influence, thus enlarging the coalition's ability to create needed change and implement multiple strategies. Members act as leaders to promote and gather support for the coalition's information, strategies, and activities from the sector they represent.
- New members are invited to join to expand the coalition's sphere of influence and increase capacity to address additional root causes.

Members Represent Community Sectors

Required 8 of the following 12 sectors:

1. Youth
2. Parent
3. Law Enforcement
4. Civic/Volunteer Groups
5. Business
6. Healthcare Professionals
7. Media
8. School
9. Youth-serving Organizations
10. Religious/Fraternal Organizations
11. State/Local/Tribal Governments
12. Other Substance Abuse Organizations

Suggested Optional participation:

- Chemical Dependency Treatment*
- Mental Health Services Representative*

*Sector is recommended for participation in CPWI, but is not a required sector for Drug Free Communities grantees.

Role of the Coalition Members

The role of the coalition members is to engage in the planning and implementation of the coalition's Strategic Plan by participating in workgroups, reviewing plan drafts, developing strategies, and leading/facilitating the implementation of strategies and activities in the Plan. In addition, the coalition members determine the functioning of the coalition, priority problems, goals and objectives, strategies and activities, and evaluation measures and reporting.

Coalition member tasks include:

- Participate in coalition workgroups and meetings.
- Participate in Community Coalition Orientation.
- Organize and participate in an annual Key Leader Event.
- Recruit and retain membership.
- Confirm partnerships to get the work done.
- Create/update and submit the coalition's Strategic Plan which includes the coalition's process, decisions, and plan for each of the following steps:
 - Conduct needs and resource assessments.
 - Set goals, objectives, and strategies.
 - Establish implementation steps and timelines.
 - Plan for reporting and evaluating progress on outcomes.

DBHR Community Prevention & Wellness Initiative (CPWI)

Community Coalition Guide

- Lead and oversee the implementation of direct services, environmental strategies, and media campaigns.
- Report coalition outputs and outcomes to DBHR.
- Implement and support evaluation designed by DBHR. This includes:
 - Support the Healthy Youth Survey (HYS).
 - PBPS reporting.
 - Participate in the annual Coalition Assessment Tool survey.
 - Conduct the annual ‘Community Survey.’

Role of the Community Coalition Coordinator

The Community Coalition Coordinator’s role is to provide staff support to the coalition. As staff, the Coordinator manages the processes of strategic planning and implementation. Community Coalition Coordinator and other coalition staff are not members of the coalition and should not serve as elected officers. Community Coalition Coordinator and other coalition staff assist with support for planning, problem solving, and information management (evaluation, deadlines, reporting, etc.). The job of the Community Coalition Coordinator is to understand the framework, process, and requirements; keep track of the overall process to guide the coalition through the process and ensure the coalition is moving forward; keep records of the work and decisions of the coalition; ensure reporting is completed; and distribute meeting information prior to meetings (agendas, decisions to be made, and minutes). (See page 16 for a detailed task list.)

Role of Prevention-Intervention Specialist

The role of the Prevention-Intervention Specialist (also known as the Student Assistance Specialist) is to work in partnership with the coalition to implement the school-based strategy and activity of the Student Assistance Prevention-Intervention Service Program (SAPISP).

Prevention-Intervention Specialist (P-I) tasks include:

- Provide screening and referral information to students (parents) involved in the SAPISP.
- Conduct early intervention educational support groups for selected and indicated students.
- Attend and participate in local community coalition meetings.
- Provide Prevention Education Series to one grade level per year.
- Provide information and increase awareness of available prevention, intervention, and treatment services to school staff, parents, and students.
- Participate as integral member of the multi-disciplinary team at assigned school(s).
- Assist in developing alcohol, tobacco, and other drug related policies at school(s) when needed.
- Implement and maintain methods of program evaluation.

Role of County (or when applicable, Designated Contractor)

The role of the county is to work with the Educational Service District (ESD) to review the ‘County Risk Profile’ provided by DBHR, jointly agree on the community selected, submit community selection packet to DBHR, establish or identify coalition, and then continue working with the community coalition while allowing the local community coalition to make decisions and fulfill CPWI requirements. County staff are not members of the coalition and should not serve as elected officers.

County tasks include:

- Ensure that all provisions of CPWI are met in a timely manner.
- Participate in monthly CPWI Learning Community Meetings.
- Work with their ESD partner in the community selection process.

Note: Other roles and responsibilities may be negotiated with DBHR.

DBHR Community Prevention & Wellness Initiative (CPWI) Community Coalition Guide

Role of Educational Service District (ESD)

The role of the ESD is to work with the county to review the ‘County Risk Profile’ provided by DBHR, jointly agree on the community selected, provide community selection paperwork to county, and establish and/or identify the school contacts and their roles with the coalition; and then continue working with the P-I and community coalition while allowing the local community coalition to make decisions and fulfill CPWI requirements. ESD Staff are not members of the coalition and should not serve as elected officers.

ESD tasks include:

- Supervise Prevention-Intervention Specialist.
- Participate in monthly CPWI Learning Community Meetings.
- Work with their county partner in the community selection process.

Note: Other roles and responsibilities may be negotiated with DBHR.

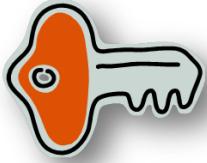
Coalition Meetings

Successful coalitions have action-driven meetings which focus on decision-making, strategic planning, and action steps. Coalition meetings are typically 1½ to 2 hours. The meetings include items related to the priorities and outcomes of the coalition and focus on the action to be taken to achieve those priorities or outcomes. Coalitions often use workgroups to support detailed work and then engage the full coalition in key decisions and action to facilitate broader reach for implementation action.

Hosting effective meetings requires coalitions to make strategic transitions in how they manage time together.

From less effective coalition meeting agendas	To engaged action-focused coalition meeting agendas
Agenda items are committee or agency updates	Agenda items are related to the priorities and outcomes of the coalition
Agenda items are introduced by the chair and discussed by the paid staff	Agenda items list the person who will be leading the discussion, the time allotted and the action to be taken
Agenda items are stagnant or cut and pasted from month to month	Coalition progress is evident by new and emerging items on the agenda
Members advise staff on action to be taken before the next meeting	Action planning and delegation happens in the meeting
The same five or six people at the meeting every month	New members and partners are recruited to the meeting based on the agenda items
New members attend only one or two meetings and then never come back	Adults as partners in completing the work

For additional information about coalition building please see training materials “Enhancing Coalition Impact” at http://www.theathenaforum.org/training/cpwi_trainings.



CHAPTER 2: CPWI KEY OBJECTIVES

Section Contents

CPWI Key Objectives	10
<i>Establishment of a community coalition (community)</i>	<i>10</i>
<i>Identification of a community coordinator (community)</i>	<i>10</i>
<i>Define and select communities (community)</i>	<i>10</i>
<i>Implementation of environmental, public awareness, direct service, and capacity building strategies (community).....</i>	<i>11</i>
<i>School-based prevention specialist (community)</i>	<i>11</i>
<i>Participating communities are distributed statewide (community)</i>	<i>11</i>
<i>Resources match outcomes (community/state).....</i>	<i>12</i>
<i>DBHR technical assistance/support (state).....</i>	<i>12</i>
<i>Evaluating program and community-level change (community).....</i>	<i>12</i>
<i>Workforce development (community/state).....</i>	<i>12</i>
<i>Compliance with Synar (community/state).....</i>	<i>13</i>
<i>Other.....</i>	<i>13</i>

DBHR Community Prevention & Wellness Initiative (CPWI) Community Coalition Guide

CPWI Key Objectives

The following Division of Behavioral Health and Recovery (DBHR) Community Prevention and Wellness Initiative (CPWI) (formerly called the Prevention Redesign Initiative) objectives were developed through discussions and meetings with county, OSPI, educational service districts and community stakeholders. They are identified as primarily a “community” or “state” related responsibility. The bullets under each objective outline the minimal standard to participate in the CPWI. The benchmark under each objective is the recommended as ideal in the CPWI as we move forward. It is recognized that many communities will not be able to meet all the benchmarks for all objectives immediately due to financial limitations. **Key themes received (highlighted below) are general comments received by DBHR during CPWI planning sessions in the fall of 2009.**

Establishment of a community coalition (community)

- Specific substance abuse prevention focus.
- Minimum: Eight out of 12 Drug-Free Community sectors represented, including a chemical dependency treatment provider. Sectors include law enforcement, religious/fraternal organizations, civic/volunteer groups, healthcare professionals, state/local/tribal government, substance abuse organizations, youth under the age of 18, parents, businesses, media, schools, and youth-serving organizations.
- **Benchmark:** All 12 sectors must be represented with different people for each sector, and will include chemical dependency treatment, mental health, and primary health care providers.

Key Themes Received

- Challenging for some communities to identify and engage all of the sectors required by the Drug-Free Community Grant application.
- Training needed to support coalition development.
- Need clear roles for coalition membership and leadership.
- Encourage broad representation and participation.

Identification of a community coordinator (community)

- Coordinator must be identified for each community selected.
- Minimum .5 FTE community coordinator.
- **Benchmark:** 1.0 FTE community coordinator.

Key Themes Received

- Need to allow for leveraged funds to support coordinator position.
- Resources not adequate to support 1.0 FTE for each community.
- Job descriptions need to be clear and reasonable.

Define and select communities (community)

- Communities must be described in geographic terms or at-risk populations which can be described demographically.
- Communities must have baseline data describing the extent of the substance abuse problem that places their residents at risk for substance abuse issues. The identified communities must also have the ability to measure change in risk/protection as well as prevalence of substance abuse.
- Communities are not expected to be county-wide as they need to be small enough to measure community-wide change with limited resources. Examples include: towns, small cities, communities surrounding a rural school district or urban school building.
- Schools within the community will participate in the Washington State Health Youth Survey on a biennial basis.

DBHR Community Prevention & Wellness Initiative (CPWI)

Community Coalition Guide

- **Benchmark:** Community risk and protective factors, as well as substance abuse prevalence rates can be measured with existing databases; including Washington State Healthy Youth Survey, and archival data collected in the CORE GIS.

Key Themes Received

- Need to consider allowing for defined communities that are not geographic in nature.
- The defined community needs to have access to baseline and on-going measurements.
- May need to consider neighborhoods in large urban settings.
- Schools, law enforcement, and places of worship are all considered important elements of a community.
- Need to find ways of identifying traditionally underserved communities.

Implementation of environmental, public awareness, direct service, and capacity building strategies (community)

- Each community will have some level of capacity building with an environmental strategy, as well as a public awareness and direct service evidence-based approaches.
- **Benchmark:** Identified communities will invest in capacity building activities, a minimum of two environmental strategies per year, one public awareness campaign relating to a priority drug issue in their community, and multiple direct service evidence-based approaches.

Key Themes Received

- Need a balance between community capacity building, environmental strategies, and direct service work.
- Evidence-based programs do not meet the needs of all populations.
- Need to leverage resources within the community in order to have a comprehensive plan – DBHR resources are limited.

School-based prevention specialist (community)

- A minimum of 1.0 FTE school-based Prevention-Intervention (P-I) specialist is employed in the identified community.
- Student Assistance Prevention-Intervention Service Program (SAPISP) model developed by OSPI will be followed.
- P-I specialist will be actively involved in the community coalition.
- **Benchmark:** A minimum of 1.0 FTE P-I specialist is employed for every 1,000 middle and high school students in the identified community.

Key Themes Received

- DBHR funds do not need to pay for the entire FTE, leveraged funds by local schools and the ESDs are critical. What is important is the FTE is located in the defined community.
- It is important to have the ESDs supervise the assigned P-I specialists.
- P-I specialist need to be active members of the community coalitions.

Participating communities are distributed statewide (community)

- Each county will identify a minimum of one community. In counties with larger populations, more than one community is expected to be identified.
 - Counties under 195,000 people = 1 community
 - Counties between 195,000 and 700,000 people = 2 communities
 - Counties between 700,000 and 1,500,000 people = 3 communities
 - Counties over 1,500,000 people = 4 communities
- Counties/ESDs was phased into the CPWI in three cohorts. The first cohort began on July 1, 2011. DBHR is targeting 12 counties and no more than 18 communities in Cohort 1. Cohort 2 began on July 1, 2012 and Cohort 3 began July 1, 2013.
- **Benchmark:** All counties/ESDs will be actively participating by the beginning of FY2013.

DBHR Community Prevention & Wellness Initiative (CPWI)

Community Coalition Guide

Key Themes Received

- Flexibility is needed to continue some countywide environmental and capacity building efforts.
- Need to leverage other state and local resources in defined communities.
- Important to reach as many communities as possible, and still maintain sufficient programming and policy work to realize community-level change.

Resources match outcomes (community/state)

- Performance-based contracts will be tied to community prevention planning and program implementation outputs.
- *Benchmark:* Performance-based contracts will be tied to community substance abuse outcomes.

Key Themes Received

- Limiting the number of communities funded by fully resourced comprehensive plans with DBHR funds is not necessary, leverage funds need to be counted on more.

DBHR technical assistance/support (state)

- Community coalition development.
- Strategic planning, evaluation, and reporting.
- Social marketing/public awareness.
- Substance abuse prevention/mental health promotion.
- *Benchmark:* DBHR staff will have the technical expertise to support providers in their efforts to organize communities, develop strategic plans, select programs/practices/policy development work, and report/market their progress and incorporate mental health promotion strategies where appropriate.

Key Themes Received

- Access to community technical assistance was a key element in the SPF/SIG Project.

Evaluating program and community-level change (community)

- All programs will need to report into the Performance-Based Prevention System (PBPS); those serving individuals age 10 and older will report into the PBPS using assigned measures tied to their program/practice objectives.
- Environmental strategies will be reported in the PBPS.
- Community level change will be tracked using HYS and Core GIS Data.
- HYS will be implemented in all schools within the identified community.
- *Benchmark:* All program/practice/policy efforts supported by DBHR funds will be reported in the PBPS, which will generate real-time reports.

Key Themes Received

- Measuring progress and success is important.

Workforce development (community/state)

- Prevention certification offered in Washington State.
- Substance abuse prevention specialists training offered in Washington State.
- Annual Prevention Summit.
- Athena website for prevention professionals in Washington State.
- *Benchmark:* Direct-service providers are trained in the programs they are offering. Each agency receiving DBHR prevention funds will have at least one Certified Prevention Professional (CPP) on staff.

DBHR Community Prevention & Wellness Initiative (CPWI)

Community Coalition Guide

Key Themes Received

- Training and workforce development is important.

“What Works” (community/state)

- A minimum percentage of programs/practices/policies must be evidence-based per the contract requirements.
- Principles of prevention for all programs.
- *Benchmark:* 75% of program groups of programs/practices/policies must be evidence-based, based on the Washington State specific list.

Key Themes Received

- It is important to keep some flexibility for innovation and adaptation.
- Field needs to continue to follow research and principles being adopted nationally and learn from our work in Washington State.

Compliance with Synar (community/state)

- Communities will support Synar compliance activities locally.
- *Benchmark:* All counties will support their local health departments in Synar compliance activities, such as; retail compliance checks and retailer education.

Key Themes Received

- If counties are expected to continue to support the local Synar work, they will need some flexibility to maintain level of work at a countywide level.

Other

*Seek opportunities in Healthcare Reform (community/state)

- DBHR staff and providers will establish a workgroup, or use the Cohort 1 learning community to study potential collaborative opportunities between substance abuse prevention, mental health promotion, and primary health care.
- *Benchmark:* At least one co-developed/selected and co-funded substance abuse prevention/mental health promotion project in each community on an annual basis will be implemented.

*Healthcare reform was passed by Congress since the CPWI stakeholder workgroup met in the fall of 2009. It is essential that the CPWI follow the direction currently being formulated at the state and federal level.

Key Themes Received

- This is a new item and will be discussed at future meetings.



CHAPTER 3: IMPLEMENTING CPWI IN YOUR COMMUNITY

Section Contents

Implementing CPWI in Your Community	15
Quick Reference Timeline Overview	16
GETTING STARTED	17
A. <i>Register and participate in The Athena Forum.....</i>	<i>17</i>
B. <i>Select CPWI community.....</i>	<i>17</i>
C. <i>Community Coalition Coordinator (.5 FTE) for each CPWI community.....</i>	<i>17</i>
D. <i>Confirm SAPISP and Prevention-Intervention Specialist services (P-I services).....</i>	<i>18</i>
CAPACITY BUILDING.....	19
A. <i>Recruit and retain membership.....</i>	<i>19</i>
B. <i>Community coalition member orientation.....</i>	<i>19</i>
C. <i>Establish and maintain coalition structure.....</i>	<i>19</i>
D. <i>Engage key leaders in coalition's CPWI efforts.....</i>	<i>19</i>
E. <i>Gather community information and feedback.....</i>	<i>20</i>
E. <i>Participate in training and technical assistance.....</i>	<i>20</i>
ASSESSMENT.....	21
A. <i>Conduct Needs Assessment.....</i>	<i>21</i>
B. <i>Conduct Resources Assessment.....</i>	<i>21</i>
PLANNING	23
A. <i>Select and update goals, objectives, strategies, and programs/activities.....</i>	<i>23</i>
B. <i>Develop and update Prevention Strategic Plan.....</i>	<i>23</i>
C. <i>Confirm partnerships for implementation of strategies and programs/activities.....</i>	<i>23</i>
IMPLEMENTATION	24
A. <i>Maintain active community coalition.....</i>	<i>24</i>
B. <i>Participate in monthly meetings with DBHR.....</i>	<i>24</i>
C. <i>Implement media strategies.....</i>	<i>24</i>
D. <i>Implement strategy(ies) and programs/activities according to Strategic Plan.....</i>	<i>24</i>
REPORTING AND EVALUATION.....	25
A. <i>Develop reporting and evaluation strategies.....</i>	<i>25</i>
B. <i>Complete PBPS reporting.....</i>	<i>25</i>
C. <i>Review and analyze output and outcome information with coalition according to Strategic Plan.....</i>	<i>25</i>
D. <i>Participate in statewide evaluation.....</i>	<i>25</i>

DBHR Community Prevention & Wellness Initiative (CPWI) Community Coalition Guide

Implementing CPWI in Your Community

Purpose of this Section of the Community Coalition Guide

The purpose of this section is to identify the required tasks and provide guidance, definition, and clarification on each task category grouped by the CPWI Planning Framework steps. Please note: this Guide is not intended to be a comprehensive handbook for community organizing.

Task items marked “**required**” are due according to the Task Category Timeline Overview. As indicated in the following pages, some items will be submitted to DBHR via electronic files or reported into the Performance Based Prevention System (PBPS), while other items will be documented during site visits. Please note, as additional funding is made available to support CPWI efforts, this Guide may be updated to include additional requirements and information.

Quick Reference Timeline Overview display on the following page is categorized by Tasks and does not indicate sequence to follow. This is not expected to be linear process. The timeline is based on annual schedule starting at the beginning of the fiscal year. Complete timeline will be negotiated with DBHR based on individual coalition readiness. Non-Cohort 1, 2 or 3 coalitions that need to start on an alternate timeline will be reviewed on a case-by-case basis to establish starting time and timeline to follow will be negotiated with DBHR. A Microsoft Excel template of the Timeline Overview has been prepared for your use; templates can be found at www.theAthenaForum.org. (See page 5 for download instructions.)

DBHR Community Prevention & Wellness Initiative (CPWI) Community Coalition Guide

Quick Reference Timeline Overview

Tasks	Frequency	Due Date
<i>Start date: July 1, 2014</i>		
<small>Complete timeline will be negotiated with DBHR based on individual coalition readiness.</small>		
Getting Started		
1. Register and participate in The Athena Forum	Ongoing	within 2 weeks of start
2. Select CPWI Community	---	---
a. Submit selection packet	First Year only	by March 31
b. Issue media release	First Year only	within 60 days from DBHR approval
3. Community Coalition Coordinator (.5 FTE) for each CPWI community	---	---
a. Review job description with DBHR	First Year & As needed	Prior to posting
b. Ensure Coordinator is working with coalition	Ongoing	Starting July 1
4. Confirm SAPISP and P-I services	Annually	Within 30 days prior to start of school
Capacity		
1. Recruit and retain membership	---	---
a. 8 of 12 sectors	Ongoing	Starting July 1
b. Membership section in Strategic Plan	Ongoing & Update 2015	[enter date]
c. Conduct 'Coalition Assessment Tool' (CAT)	Annually	October
d. Complete 'Community Profile'	First Year & Update 2015	Within 45 days from approval of Plan
2. Community coalition orientation	First Year & As needed	[enter date]
3. Establish and maintain coalition structure	Ongoing & Update 2015	[enter date]
4. Engage key leaders in coalition's CPWI efforts	Annually	[enter date]
5. Gather community information and feedback	Ongoing	[enter date]
6. Participate in training and technical assistance	Ongoing	---
Assessment		
1. Conduct Needs Assessment	---	---
a. Establish process for assessment	First Year & Update 2015	[enter date]
b. Conduct Assessment	First Year & Update 2015	[enter date]
c. Conduct 'Community Survey'	First Year & Annually	September-December
d. Prioritize outcomes and write into Strategic Plan	First Year & Update 2015	[enter date]
2. Conduct Resources Assessment	---	---
a. Establish process for assessment	First Year & Update 2015	[enter date]
b. Conduct Assessment	First Year & Update 2015	[enter date]
c. Prioritize outcomes and write into Strategic Plan	First Year & Update 2015	[enter date]
Planning		
1. Select goals, objectives, strategies, & programs/activities	---	---
a. Coalition determines goals and objectives	First Year & Update 2015	Update June 15, 2015
b. Coalition determines strategies, and programs/activities	First Year & Update annually	June 15
2. Develop Prevention Strategic Plan	First Year & Update 2015	Update June 15, 2015
3. Confirm partnerships for implementation of strategies and programs/ activities	First Year & Annually	[enter date]
Implementation		
1. Maintain active community coalition	Ongoing	Starting July 1
a. Coordinator support Coalition	Ongoing	Starting July 1
b. Monthly full Coalition meetings	Ongoing	Starting July 1
c. Review and revised as needed Coalition structure	Annually	[enter date]
d. Complete task in Community Coalition Guide	Ongoing	Starting July 1
2. Participate in monthly meetings with DBHR	Ongoing	Within 30 days
a. Participate in monthly Learning community Meetings	Ongoing	Starting July 1
b. Participate in monthly site check-in meetings	Ongoing	[enter date]
3. Implement media strategies	Ongoing	[enter date]
4. Implement strategies and programs/activities according to Strategic Plan	---	---
a. Organize and implement P-I services	Ongoing	September - June
b. Implement capacity building strategies & activities	Ongoing	[enter date]
c. Implement cultural competency strategies & activities	Ongoing	[enter date]
d. Implement sustainability strategies & activities	Ongoing	[enter date]
e. Implement public awareness campaign(s)	Ongoing	[enter date]
f. Implement environmental strategy(ies)	Ongoing	[enter date]
g. Implement selected direct prevention strategy(ies)	Ongoing	[enter date]
Reporting and Evaluation		
1. Develop reporting and evaluation strategies	---	---
a. Determine coalition's intended major outcomes, impacts	First Year & Update 2015	[enter date]
b. Determine how evaluation information will be shared	First Year & Update 2015	[enter date]
2. Complete PBPS reporting	---	---
a. Coalition & community organization functioning	Ongoing	[enter date]
b. 'Coalition Assessment Tool' (survey)	Annually	October
c. Report public awareness & environmental strategy(ies)	Ongoing	[enter date]
d. Report direct prevention strategy(ies)	Ongoing	[enter date]
3. Review and analyze output and outcome information with coalition according to Strategic Plan.	---	---
a. Use the 'Coalition Assessment Tool' report to evaluate coalition capacity building efforts.	Annually	October
b. Review effectiveness of message dissemination	Annually	[enter date]
c. Will use the PBPS reports, state data, & other local reports to monitor & evaluate progress	Annually	[enter date]
4. Participate in statewide evaluation	---	---
a. Ensure participation in the Healthy Youth Survey	Every 2 years	In even years (2014, 2016, etc.)
b. Annual 'Coalition Assessment Tool' (survey)	Annually	October
c. Response rates for the 'Community Survey'	Annually	September-December

DBHR Community Prevention & Wellness Initiative (CPWI) Community Coalition Guide

GETTING STARTED

A. Register and participate in The Athena Forum.

- ❑ *(Required - Ongoing)* County, ESD, and Community Coalition Coordinators register and actively participate in The Athena Forum. **Definitions:** “Register” means to become a member of the www.theAthenaForum.org within two weeks of staff participation in CPWI. “Actively participate” means to go to site to access materials posted by DBHR.

B. Select CPWI community.

- ❑ *(Required - New only)* Select community(ies) to participate in CPWI. Submit ‘Community Selection Packet’ to DBHR CPWI Prevention System Manager by March 31.
 - County and ESD will work together to review DBHR provided ‘County Risk Profile’ of high need communities in county.
 - Determine willingness of highest need communities to participate and engage in CPWI.
 - Review community and school readiness of potential communities identified in ‘County Risk Profile.’
 - Assess community readiness stages for communities listed as highest risk in the ‘County Risk Profile.’ *Note: Lower stages of community readiness may help indicate communities that are of higher-need for services, therefore being an optimal CPWI community choice.*
 - Identify resources available to address readiness challenges.
- ❑ *(Required -New only)* County and/or coalition will issue media release, within 60 days following approval of community selection, to outlets serving the CPWI community using ‘CPWI News/Media Release Template’ provided by DBHR. Send a copy of local release and notification of any media coverage to DBHR.
- If needed, sign a Memorandum of Understanding (MOU) between county and coalition.

C. Community Coalition Coordinator (.5 FTE) for each CPWI community.

- ❑ *(Required - New and As needed)* County reviews Community Coalition Coordinator job description and hiring/designation process with DBHR for initial hire and as needed to fill vacancies.
- ❑ *(Required - Ongoing)* County will ensure qualified Community Coalition Coordinator is working with coalition to help organize and maintain the community substance abuse prevention coalition, provide assistance to the community coalition, and to help guide the continuous development and implementation of a community substance abuse prevention strategic plan, by July of starting year and ongoing for the duration of the project.
- Community Coalition Coordinator will:
 - Work in community to fulfill requirement of minimum .5 FTE time dedicated to each CPWI community.
 - Serve as staff for the coalition to plan, implement, and report on task categories.
 - Serve as a liaison between CPWI coalition and DBHR.
 - Participate in CPWI learning community meetings, monthly DBHR check-in meetings, and required training.
 - Help recruit and retain membership on the coalition and support from local key stakeholders/leaders.
 - Provide staff support to the coalition; coordinate regular meetings to ensure implementation on the strategic plan and work plan.
 - Coordinate the regular review of coalition budget by the coalition.
 - Assist coalition members in navigating CPWI Prevention Planning Framework and guide coalition to develop a comprehensive Action Plan based on needs assessment and strategic planning.
 - Work with individual coalition member organizations to help them align and integrate their work with the goals and strategies of the coalition and CPWI Prevention Planning Framework-focused work.

DBHR Community Prevention & Wellness Initiative (CPWI) Community Coalition Guide

- Report to the coalition on progress toward the goals and objectives of the strategic plan and work plans.
 - Provide or coordinate services, implement activities and manage coalition trainings with the guidance of the coalition members.
 - Work with the coalition and projects to develop and monitor outcomes.
 - Coordinate community outreach efforts (presentations, newsletter, volunteer recruitment, etc.).
 - Function as the liaison among the coalition members and with the community.
- Strongly recommended Community Coalition Coordinator qualifications:
 - B.A. Degree in Education, Health Education, Communications, Social Sciences, or closely related field.
 - Certified Prevention Professional.
 - Two years of work experience in community organizing, program coordination, or community-based programs involving youth, drug/alcohol/tobacco abuse, or other related community health prevention or counseling.
 - Working knowledge of substance abuse prevention and prevention science, community development and mobilization, youth development principles, and community organizing approaches.
 - Ability to create and sustain effective relationships with community partners, foster and share leadership among individuals in the community, and build bridges among diverse community members and organizations.
 - Work skills: Organized; excellent oral and written communication; public speaking and training; group and meeting facilitation; word processor, spreadsheet, and internet skills; good sense of humor; ability to learn new concepts quickly; and self-motivated with ability to work independently.
 - Knowledge of local organizations, services, the community to be served, and prevention.

D. Confirm Student Assistance Prevention-Intervention Service Program (SAPISP) and Prevention-Intervention Specialist services (P-I services).

- *(Required – Annually)* County will coordinate with ESD to confirm school district and school building participation in CPWI and implementation of SAPISP and P-I services within 30 days prior to start of school each year.

Note: A SAMPLE Timeline to Prepare for Implementing CPWI is attached for your reference in the Appendix 1.

DBHR Community Prevention & Wellness Initiative (CPWI) Community Coalition Guide

CAPACITY BUILDING

- A. Recruit and retain membership.** Coalition will recruit and maintain membership and participation consistent with CPWI requirements, strategic plan, demographics, and culture of the community.
- ❑ *(Required - Ongoing)* Maintain 8 of the 12 required sectors actively participating in the coalition. **Definition:** “Active participation” means a locally developed standard that is followed by coalition.
 - ❑ *(Required – Ongoing and Update every 2 years)* Develop and implement membership recruitment and retention strategies including minimum participation rules. Include plan for ‘membership recruitment and retention’ in Strategic Plan, update as needed but at a minimum every two years. Recruitment and retention must include elements of cultural competency.
 - ❑ *(Required - Annually)* Implement ‘Coalition Assessment Tool’ (survey) annually in October, analyze results and discuss at coalition meeting(s).
 - ❑ *(Required – New and Update Annually)* Coalition will complete ‘Community Profile’ brochure with DBHR within 45 days following approval of Strategic Plan. Update ‘Community Profile’ as needed but at a minimum every year within 45 days following approval of annual Action Plan updates.
- B. Community coalition member orientation.** Coalition will ensure that coalition members have clear understanding of CPWI goals and objectives, CPWI/Strategic Prevention Framework planning model, and coalition structure and capacity building plan.
- ❑ *(Required – New and As needed)* Coalition will conduct a training/meeting to meet the following goals:
 - Review CPWI goals.
 - Providing necessary training to increase the understanding for the coalition members in the CPWI/Strategic Prevention Framework planning model, related local data, goals, and activities of coalition.
 - Develop coalition structure.
 - Develop capacity building plan.
- C. Establish and maintain coalition structure.**
- ❑ *(Required - Ongoing and Update every 2 years)* Coalition will establish and maintain, at a minimum, the following:
 - A meeting schedule and structure to achieve components required for strategic planning and implementation.
 - A mission statement. Include ‘mission statement’ in Strategic Plan.
 - A decision-making model to be used. Include ‘decision-making process’ in Strategic Plan.
 - Procedures for communication. Include ‘communication procedures’ in Strategic Plan.
 - Coalition will review mission, goals, activities, and strategies annually to decide if revisions are needed.
 - Develop job descriptions for coalition members (including school representatives), “leadership team,” and staff.
 - Establish work groups as necessary.
- D. Engage key leaders in coalition’s CPWI efforts.** Any community key leader who is not already participating as a member of the coalition will be invited to participate in an annual event to discuss coalition. **Definition:** “Key leader” means local influential people who can influence decisions, funding, and resources for the local community

DBHR Community Prevention & Wellness Initiative (CPWI)

Community Coalition Guide

(i.e., Mayor, Superintendent, County Executive, County/City council members, Business Owners, PTS President, Sheriff, Police Chief, etc.).

- *(Required - Annually)* Coalition will host Key Leader event annually that will meet the following goals:
 - Bring selected key leaders and coalition members together.
 - Provide necessary training to increase the understanding for the key leaders in the CPWI/Strategic Prevention Framework planning model, related local data, goals, and activities of coalition.
 - Celebrate successes to date.
 - Develop 'buy-in' for coalition by key leaders.
 - Provide opportunity to hear perspective of key leaders on the goals, activities, and efforts of the coalition.
 - Commitment/re-commitment from key leaders to support the goals, activities, and efforts of the coalition.
 - (Re)energize coalition members.

Note: Key Leader event may be integrated with other local currently established annual event.

- Set up and maintain communication updates with key leaders.

E. Gather community information and feedback.

- *(Required - Ongoing)* Coalition will gather information and feedback about the work and strategies of the coalition from the community. Coalition will incorporate the community feedback into its decision-making processes. **Definition:** "Community" means those individuals who are part of the community but are not coalition members.

E. Participate in training and technical assistance.

- *(Required)* Participate in the following trainings:
 - Participants: ESD staff/county staff/ community coalition coordinator or designees.
 - *(Annually)* Training in coordination with All Provider Meeting.
 - *(Annually)* Prevention Summit.
 - *(Annually)* 1 additional DBHR training.
 - Participants: Community coalition coordinator.
 - *(New and as needed)* Community Coalition Coordinator Orientation.
 - *(New only)* SAPST within six months (if not previously completed).
 - Participants: Coalition members and community coalition coordinator.
 - *(New and as needed)* Community Coalition Orientation
 - Participants: Key leaders, coalition members and community coalition coordinator.
 - *(Annually)* Key Leader Event

DBHR Community Prevention & Wellness Initiative (CPWI) Community Coalition Guide

ASSESSMENT

Note: Priorities determined through the needs and resources assessment should not be limited to the funding resources currently available. Plan should consider strategies for generating resources to support the unmet needs of the community.

A. Conduct Needs Assessment. The coalition will make data-informed decisions and define problem statements using archival, Healthy Youth Survey, and local indicator data. The needs assessment is completed by the coalition, with support from the community coalition coordinator, using workgroups as needed to review and discuss data in detail. The coalition will regularly update the needs assessment to make adjustments based on progress towards meeting goals and objectives and to meet the needs of the community. Assessment will be updated as needed but at a minimum every two years.

- ❑ *(Required – New and Updated every 2 years)* Coalition will establish a process to compile data, review the information, and ensure data is reflective of community demographics. Include ‘explanation of process’ in Strategic Plan.
- ❑ *(Required – New and Updated every 2 years)* Coalition (or workgroup) will collect, compile, and review data.
 - Review data provided in ‘Community Needs Assessment Data Book’ provided by DBHR. Discuss implications for the community and the work of the coalition.
 - Identify gaps in the data, and possible sources of more precise local data to fill those gaps.
 - Collect those local data and add to assessment.
 - Identify important and/or significant data that demonstrates areas to focus substance abuse efforts to include in Strategic Plan. Include ‘significant data’ in Strategic Plan.

Note: The coalition may choose to use a workgroup for this part of the needs assessment. It is recommended to have 3-5 people for the workgroup. There should be some members from the coalition to help guide the work of the workgroup but not all members need to be coalition members. Invite people in the community who have expertise and/or interest in data relating to youth risk and protective factors, substance use, and related community indicators of problem behaviors to join workgroups.

- ❑ *(Required– New and Annually)* Conduct ‘Community Survey’ provided by DBHR with community annually between September and December. Definition: “Community” means individuals from within the community who are not already participating as members of the coalition. Coalition will review results of the survey.
- ❑ *(Required – New and Updated every 2 years)* Coalition will prioritize outcome for long-term consequences, behavioral health problems, intervening variables/risk and protective factors, and contributing factors to include in Strategic Plan. Include ‘priorities’ in Strategic Plan.

B. Conduct Resources Assessment. Following the Needs Assessment, the resources assessment is completed by the coalition, with support from the Community Coalition Coordinator, using workgroups as needed to review and discuss information in detail. The coalition will regularly update the resources assessment to make adjustments based on progress towards meeting goals and objectives and to meet the needs of the community. Assessment will be updated as needed but at a minimum of every two-years.

- ❑ *(Required – New and Updated every 2 years)* Coalition will establish a process to collect, compile, and review resource data. Include ‘explanation of process’ in Strategic Plan.

DBHR Community Prevention & Wellness Initiative (CPWI) Community Coalition Guide

- *(Required – New and Updated every 2 years)* Coalition (or workgroup) will collect, compile, and review resource data.
 - Collect and compile information about the providers and prevention-related services in the community related to the prioritized outcomes for long-term consequences, behavioral health problems, intervening variables/risk and protective factors, and contributing factors.
 - Identify important and/or significant information that demonstrates areas to focus substance abuse efforts to include in Strategic Plan. Include 'significant information' in Strategic Plan.

Note: The coalition may choose to use a workgroup for this part of the resources assessment. It is recommended to have 3-5 people for the workgroup. There should be some members from the coalition to help guide the work of the workgroup but not all members need to be coalition members. Invite members of the coalition who have knowledge of a wide range of providers of prevention related services to participate.

- *(Required – New and Updated every 2 years)* Coalition will review results of the resources information and integrate results into strategies and activities. Include 'results' in Strategic Plan.

DBHR Community Prevention & Wellness Initiative (CPWI) Community Coalition Guide

PLANNING

A. Select and update goals, objectives, strategies, and programs/activities.

- ❑ *(Required – New and Updated every 2 years)* Coalition determines goals, and objectives. Include ‘goals and objectives’ in Strategic Plan.
- ❑ *(Required – New and Updated annually)* Coalition determines ‘strategies, and programs/activities’ and identifies who will receive services and what services they will receive. Include ‘Action Plan’ in Strategic Plan.

B. Develop and update Prevention Strategic Plan.

- ❑ *(Required – New and Updated every 2 years)* Coalition will develop, write, and submit a strategic plan, including a logic model, to DBHR for approval according to the schedule below, using the Strategic Plan Requirements. The coalition will regularly update strategic plan to make adjustments based on progress towards meeting goals and objectives and to meet the needs of the community. Plan will be updated as needed but at a minimum according to the schedule below. The Strategic Plan includes the coalition’s process, decisions, and plan for each of the following steps:
 - Organization development and building capacity.
 - Conduct needs and resource assessments.
 - Set goals, objectives, and strategies.
 - Establish implementation steps and timelines.
 - Plan for reporting and evaluating progress on outcomes.

Timeline for Strategic Plan due dates

- Action Plans are required to be updated **annually by June 15th** (see Appendix 12: beginning on page 54)
- 2015 Update of Strategic Plan for all CPWI coalitions is **due June 15, 2015.**
- Comprehensive Update of Strategic Plan for all CPWI coalitions is **due June 15, 2017.**

C. Confirm partnerships for implementation of strategies and programs/activities.

Coalition will ensure that necessary relationships are established and permissions obtained so that strategies can be implemented effectively. Coalition identifies partnership gaps and plans outreach and recruitment strategies to fulfill needs.

- ❑ *(Required – New and Updated annually)* Coalition will confirm lead organization/responsible party for implementation of activities/programs in Strategic Plan. Include ‘Action Plan’ in Strategic Plan.

If needed, MOU is signed to ensure partnerships for implementation of services.

DBHR Community Prevention & Wellness Initiative (CPWI) Community Coalition Guide

IMPLEMENTATION

A. Maintain active community coalition.

- ❑ *(Required – Ongoing)* Community coalition coordinator (.5 FTE) supports and maintains the community substance abuse prevention coalition, provides assistance to the community coalition, and helps guide the continuous development and implementation of a community substance abuse prevention plan. Beginning July of starting year and ongoing for the duration of the project.
- ❑ *(Required – Ongoing)* Coalition will regularly conduct monthly full coalition meetings, workgroup/sub-committee meetings as needed, and maintain a structure to achieve components required for strategic planning and implementation.
- ❑ *(Required – Annually)* Coalition will review coalition structure at least annually and revise if needed, to ensure it still represents coalition's actions and intentions.
- ❑ *(Required – Ongoing)* Coalition will complete tasks included in 'Community Coalition Guide.'

B. Participate in monthly meetings with DBHR.

- ❑ *(Required – Ongoing)* ESD staff/county staff/community coalition coordinator attends monthly CPWI Learning Community meetings by phone, GoTo® meeting, K20, or in-person and document attendance in PBPS.
- ❑ *(Required – Ongoing)* DBHR and community coalition coordinator meet for check-in meetings at least once per month, or more frequently as needed, to discuss:
 - Timeline and upcoming due dates.
 - Progress on Strategic Plan.
 - Contract compliance.
 - TA/training needs.
 - Next steps.
- County and ESD staff are invited to participate in monthly check-in meetings.

C. Implement media strategies.

- ❑ *(Required – Ongoing)* Coalition will promote statewide media campaign messages to the local news media and through social media, publications, and donated advertising using materials developed by DBHR.
- Coalition will encourage news media to announce coalition events, activities, and successes.

D. Implement strategy(ies) and programs/activities according to Strategic Plan.

- ❑ *(Required – Ongoing)* Organize and implement 1.0 FTE P-I services. ESDs in coordination with coalition will work with selected schools to implement SAPISP and P-I services. Annually September -June.
- ❑ *(Required – Ongoing)* Coalition will implement capacity building strategies and activities according to approved Strategic Plan, including coalition meetings and training and technical assistance.
- ❑ *(Required – Ongoing)* Coalition will implement cultural competency strategies and activities according to approved Strategic Plan.
- ❑ *(Required – Ongoing)* Coalition will implement sustainability strategies and activities according to approved Strategic Plan.
- ❑ *(Required – Ongoing)* Coalition will implement public awareness campaign(s) according to approved Strategic Plan. Minimum of one required.
- ❑ *(Required – Ongoing)* Coalition will implement environmental strategy(ies) according to approved Strategic Plan. Minimum of one required.
- ❑ *(Required – Ongoing)* Coalition will implement selected direct prevention strategy(ies) according to approved Strategic Plan. Minimum of one required. Must meet contractual requirements for evidence-based programs.

DBHR Community Prevention & Wellness Initiative (CPWI) Community Coalition Guide

REPORTING AND EVALUATION

- A. Develop reporting and evaluation strategies.** Include 'evaluation strategies' in Strategic Plan.
- ❑ *(Required – New and Updated every 2 years)* Determine coalition's intended major outcomes, impacts, and changes expected for goals and objectives.
 - ❑ *(Required – New and Updated every 2 years)* Determine how evaluation information will be shared within the coalition and used by the coalition to make adjustments as well as communicated with the community and key leaders.
- B. Complete PBPS reporting.** Coalition will report outputs and outcomes to DBHR in the PBPS.
- ❑ *(Required – Ongoing)* Report coalition and community organization functioning including:
 - All coalition, community coordination, and training services according to guidance in beginning on page 62.
 - 'Coalition Assessment Tool' (survey) completed by coalition members, using the instrument provided by DBHR. *(Conducted annually in October.)*
 - ❑ *(Required – Ongoing)* Report public awareness and environmental strategy(ies) including:
 - All public awareness and environmental services.
 - Pre- and post-test assessments per contractual requirements.
 - ❑ *(Required – Ongoing)* Report direct prevention strategy(ies) including:
 - All direct services.
 - Pre- and post-test assessments per contractual requirements.

Note: SAPISP and P-I services will continue to be reported through the OSPI MIS and uploaded to PBPS monthly.
 - ❑ **NEW** *(Required – Bi-annually)* Community Level Instrument-Revised (CLI-R). Applies to all PFS sub-recipients.
- C. Review and analyze output and outcome information with coalition according to Strategic Plan.** Coalition will make necessary changes based on data and performance.
- ❑ *(Required - Annually)* Coalition will use the 'Coalition Assessment Tool' report to evaluate coalition capacity building efforts.
 - ❑ *(Required - Annually)* Coalition will review effectiveness of message dissemination into community.
 - ❑ *(Required - Annually)* Coalition will use the PBPS reports, state data, and other local reports to monitor and evaluate progress towards goals and objectives.
- D. Participate in statewide evaluation.** Coalition will implement evaluation designed by DBHR. Coalition will:
- ❑ *(Required - Every 2 years)* Support the local school district to ensure participation in the Healthy Youth Survey.
 - Target is 80% participation in survey.
 - ❑ *(Required - Annually)* Work to achieve response rates for the annual 'Coalition Assessment Tool' (survey) *(conducted annually in October)*. Work with coalition leadership to use survey results in the on-going formative evaluation work.
 - Target is 80% participation in survey.
 - ❑ *(Required - Annually)* Work to achieve response rates for the 'Community Survey' *(conducted annually between September-December)*. Work with coalition leadership to use survey results in the on-going formative evaluation work.
 - Target is 250-350 individuals' participation in survey.



CHAPTER 4: STRATEGIC PLAN REQUIREMENTS

Section Contents

General Information for Writing Coalition’s Strategic Plan	27
<i>Purpose of this Section of the Guide:</i>	27
<i>What is a Strategic Plan?</i>	27
<i>Timeline for Strategic Plan due dates</i>	28
<i>Writing the Coalition’s Strategic Plan</i>	28
<i>Steps for the Coalition in developing the Plan</i>	29
<i>Review Process</i>	30
<i>Resources for Writing Strategic Plan</i>	30
EXECUTIVE SUMMARY/INTRODUCTION	31
Organizational Development (Getting Started)	32
<i>Mission Statement and Key Values</i>	32
<i>Coalition Structure and Organization</i>	32
<i>Membership Recruitment and Retention</i>	32
<i>Cultural Competency in Organizational Development</i>	32
<i>Sustainability in Organizational Development</i>	32
CAPACITY BUILDING	33
<i>Outreach</i>	33
<i>Training/Technical Assistance (TA)</i>	33
<i>Cultural Competency in Capacity Building</i>	33
<i>Sustainability in Capacity Building</i>	33
ASSESSMENT	34
<i>Needs Assessment</i>	34
<i>Resources Assessment</i>	35
<i>Cultural Competency in Assessment</i>	35
<i>Sustainability in Assessment</i>	35
PLAN	36
<i>Process for Planning</i>	36
<i>Goals, Objectives and Strategies</i>	36
<i>Action Plan</i>	36
<i>Cultural Competency in Plan</i>	36
<i>Sustainability in Plan</i>	36
IMPLEMENTATION	37
<i>Structural Support for Implementation</i>	37
<i>Budget</i>	37
<i>Cultural Competency in Implementation</i>	37
<i>Sustainability in Implementation</i>	37
REPORTING AND EVALUATION	38
<i>Expected Outcomes (Baseline and Target Data)</i>	38
<i>Plan for Tracking and Reviewing Evaluation Information</i>	38
<i>Cultural Competency in Reporting and Evaluation</i>	39
<i>Sustainability in Reporting and Evaluation</i>	39

DBHR Community Prevention & Wellness Initiative (CPWI) Community Coalition Guide

General Information for Writing Coalition's Strategic Plan

Purpose of this Section of the Guide:

The purpose of the CPWI Strategic Plan Requirements chapter is to provide the CPWI requirements for completing the coalition's Strategic Plan. It is meant to be helpful for communities and coalitions in developing a strategic plan. This first part is general information that applies to the overall development of your plan. Beginning on page 31, are specific instructions for each section of the coalition's Strategic Plan.

What is a Strategic Plan?

The coalition's Strategic Plan brings together in one place the process, findings, decisions, and plan for the future for each step of the planning framework. Strategic Plans create, confirm and provide documentation of the intended vision and goals of a coalition. A Strategic Plan should set the course for the work of the coalition with a long-term focus while also maintaining the immediate work that needs to be completed. Strategic Plans should be 'living documents' that provide direction but also are updated regularly to account for assessment and evaluation information.

CPWI Strategic Plan

Coalition should follow the guidance set forth in this document to develop and write their Strategic Plan.

The coalition's Strategic Plan should be for your community. We encourage coalitions to consider including all of the coalition efforts in the Plan; however, the coalition is only required to submit a Plan for the coalition's CPWI activities. The coalition may choose to do it either way, but you should note your choice in the beginning of the Plan and follow that choice consistently for each section throughout the entire Plan. If non-CPWI efforts are included in the Plan, the CPWI-specific (DBHR-funded) activities must be indicated throughout the Plan.

The Strategic Plan is intended to be a long-term document with frequent updates as new data and evaluation information are available. The coalition's Strategic Plan should be a vision for at least four years into the future and will include annual Action Plan updates and a two-year update as new HYS data is available. The coalition may choose to have the Strategic Plan vision extend beyond four years, however regular updates will be required as a course of doing good coalition work.

Annual Action Plan Updates

Each year by June 15th, coalitions will need to submit an updated Action Plan for review and approval to their DBHR Prevention System Manager. This update should include changes needed to strategies, programs, and/or activities based on coalition's review and discussion of evaluation information or enhanced/decreased capacity.

2015 Update of Strategic Plan

By June 15, 2015, coalitions will need to submit an update of their Strategic Plan. This update should include changes to goals, objectives, strategies, programs, and/or activities based on the coalition's review and discussion of evaluation information, new assessment information, or enhanced/decreased capacity. Coalitions will need to do an update to their needs and resources assessment based on new HYS and other assessment data available. Coalitions will need to determine what other updates/revisions are needed in each section of their Plan to reflect changes made to coalition functioning, goals, objectives, strategies, programs, and/or activities. Coalitions are not expected to re-write their Plans at this time. They are simply to review new information and update the Plan as needed. See Appendix 5 for sample planning steps.

Comprehensive Update of Strategic Plan

By June 15, 2017, coalitions will need to submit a new Strategic Plan. Coalitions will need to review and update each section of their Plan using the guidance provided by DBHR. This comprehensive update should be based on the coalition's review and discussion of progress, coalition functioning, renewed assessment, evaluation, and

DBHR Community Prevention & Wellness Initiative (CPWI) Community Coalition Guide

enhanced/decreased capacity. It is expected that the Strategic Plan will include information about achievements toward original goals and objectives and updates based on the progress to date toward those goals and objectives.

Timeline for Strategic Plan Due Dates

- Non-Cohort 1, 2 or 3 coalitions that need to start on an alternate timeline will be reviewed on a case-by-case basis to establish starting time and timeline to follow will be negotiated with DBHR.
- Action Plans are required to be updated **annually by June 15th**. (see Appendix 12: beginning on page 54)
- 2015 Update of Strategic Plan for all CPWI coalitions is **due June 15, 2015**.
- Comprehensive Update of Strategic Plan for all CPWI coalitions is **due June 15, 2017**.

Writing the Coalition's Strategic Plan

Each section of the Plan should present a clear picture of:

1. The coalition's process for completing the step. (For example: the coalition formed a workgroup, which met weekly to review data presented in the data book and additional locally gathered data...)
2. The results of the work. (For example: the Data Workgroup found that the following three intervening variables are most present in our community...)
3. The plan for the future based on the results of the work. (For example: the coalition reviewed the workgroup's recommendations and decided to prioritize two of the three identified intervening variables. The coalition then developed strategies to address these behavioral health problems...)

Each section should be developed based on the information presented in the previous section and provide a logical link to the next section. (For example, the data highlighted as priorities in the assessment should be the data that is used to write the goals and objectives.) Similarly each strategy the coalition chooses should be directly linked to the goal and objective that the strategy is aimed at achieving.

The sections in this chapter of the Guide provide detailed requirements for each section of the coalition's Plan. The Strategic Plan must include the following sections:

- I. Executive Summary
- II. Strategic Plan
 - A. [Organizational Development](#) (*Getting Started*)
 - B. [Capacity Building](#)
 - C. [Assessment](#)
 - D. [Plan for Action](#)
 - E. [Implementation](#)
 - F. [Reporting and Evaluation](#)
- III. Appendix
 1. Logic Model
 2. List of Coalition Members
 3. Needs Assessment
 4. Community Survey Results
 5. Resources Assessment
 6. Action Plan
- IV. Attachment
 1. Budget

DBHR Community Prevention & Wellness Initiative (CPWI)

Community Coalition Guide

Steps for the Coalition in Developing the Plan

Below is a **suggested sequence** and steps for the coalition in developing the Plan. See page 44 for a suggested timeline overview.

- Step 1. Start early! The #1 suggestion from Cohort 1 participants was, “Start earlier!” Develop a timeline for drafting, reviewing, and revising the coalition’s Plan. We suggest that as each step of the planning framework is completed, that section should be written. Developing and writing a good Strategic Plan will take, at minimum, six months. Work with your Prevention System Manager to establish a drafting schedule. Allow enough time to draft sections, submit them to the coalition for review, and incorporate multiple revisions as the coalition’s Plan is being developed. Do not wait until March to start drafting the coalition’s Plan.
- Step 2. Review this Strategic Plan Requirements chapter. In the main body of the chapter are descriptions of the content required for the Strategic Plan. The appendices provide other helpful information. Note: In addition to this guide, you will need to access the templates listed in the appendix. Templates are provided as separate editable documents so that you can use them for inclusion in the coalition’s Plan. Templates can be found at www.theAthenaForum.org. (See page 5 for instructions.)
- Step 3. Get the coalition organized (Getting Started and Capacity Building).
- Step 4. Document key decisions about how the coalition is organized.
- Step 5. Begin building the coalition’s Cultural Competency and Sustainability. Cultural Competency and Sustainability are included in each section and are an essential part of the process; therefore, it is important to start discussing and developing these from the beginning.
- Step 6. The coalition completes the Needs and Resource Assessments (Assessment).
- Step 7. Begin writing summary reports from each of the Assessments.
- Step 8. Write a first draft of the Plan with Introduction, Getting Started, Capacity, Assessments, Sustainability and Cultural Competency sections. Develop and fill in the first four columns of the coalition’s Logic Model. We encourage the coalition to establish a writing team and designate a lead writer. It is important that the writing and reviewing is not completed by only one person or in isolation from the coalition.
- Step 9. The coalition reviews the first draft of Plan that includes Introduction, Getting Started, Capacity, Assessments, Sustainability, and Cultural Competency sections.
- Step 10. Send first draft of the Plan to your Prevention System Manager for feedback and guidance.
- Step 11. Revise the draft based on feedback from your coalition and Prevention System Manager.
- Step 12. The coalition develops strategies, activities, and action steps for implementation (Planning and Implementation).
- Step 13. Write the coalition’s Plan for Action and Implementation sections of the Plan. Update the coalition’s Logic Model to include new information from these sections. Develop and fill in the top two sections of the coalition’s Action Plan.
- Step 14. The coalition reviews the revised draft of the Strategic Plan which now includes Plan and Implementation sections.

DBHR Community Prevention & Wellness Initiative (CPWI) Community Coalition Guide

- Step 15. Send updated draft of the Plan to your Prevention System Manager for feedback and guidance.
- Step 16. Revise the updated draft based on feedback from your coalition and Prevention System Manager.
- Step 17. The coalition develops an evaluation plan.
- Step 18. Write the Evaluation section, finish the Logic Model, finish the Action Plan and write the Executive Summary of the Strategic Plan.
- Step 19. The coalition reviews revised draft of Strategic Plan which should now include all sections.
- Step 20. Send updated draft of the Plan to your Prevention System Manager for feedback and guidance.
- Step 21. Make final revisions based on feedback from your coalition and Prevention System Manager.
- Step 22. Submit the completed plan to the coalition for final approval.
- Step 23. **Submit final Plan to DBHR for review.** The Plan must be submitted electronically via email to your Prevention System Manager. The Plan should be accompanied by a cover letter signed by the coalition chair.
- Step 24. Once approved, disseminate Plan to coalition, partners, and community.
- Step 25. Celebrate!

Review Process

The coalition submits the final Strategic Plan to DBHR for review and approval. DBHR will review each section of the Plan for clear and complete responses to each of the required items in each section listed in this Strategic Plan Requirements chapter. Your Prevention System Manager will provide feedback and discuss revisions needed. Please note, in an effort to have complete and working plans, multiple revisions may be required. Once all revisions have been submitted, reviewed, and approved, the coalition will receive approval for the Strategic Plan.

Resources for Writing Strategic Plan

DBHR has created the following three documents which contain the templates referenced throughout this chapter for your use:

- Strategic Plan Template (Microsoft Word) - includes formatted document outline with section headings, List of Coalition Members table, Community Survey Results, Action Plan, and Plan-on-a-Page.
- Coalition Budget (Microsoft Excel) – includes instructions and template of budget.
- Logic Model (Microsoft PowerPoint) – includes template and sample.
- Suggested Timeline to Prepare and Write Coalition Strategic Plan (Microsoft Excel) – includes template of timeline.

These templates as well as this Plan Guide can be found at www.theAthenaForum.org (from the homepage click on “CPWI Guides”).

Many other helpful resources can also be found at www.theAthenaForum.org. We encourage you to review the information available in the CPWI Training section found under the “training tab” link from the top menu (http://www.theathenaforum.org/training/cpwi_trainings). We have developed resources to guide you through the steps and provide samples for coalition discussions and workgroups.

DBHR Community Prevention & Wellness Initiative (CPWI) Community Coalition Guide

EXECUTIVE SUMMARY/INTRODUCTION

For the coalition's Strategic Plan the following is required:

Overview of Plan

The executive summary provides readers with a brief description of the community, the coalition, and the underlying rationale or model for the coalition's approach, as well as highlights of the most pertinent parts of the coalition's Plan.

Be sure to include the following:

- Introductory paragraph that describes the coalition
- Mission
- Geographic area to be served (definition of community)
- Brief explanation of priorities identified
- Brief description of the strategies and activities
- Plan to implement and evaluate the strategies and activities

Provide a brief paragraph of what is included in this document.

DBHR Community Prevention & Wellness Initiative (CPWI) Community Coalition Guide

ORGANIZATIONAL DEVELOPMENT (*GETTING STARTED*)

For the coalition's Strategic Plan the following is required:

Mission Statement and Key Values

- Provide the coalition's mission statement.
- Briefly describe the risk and protective factor research framework and any other research frameworks which support the coalition's goals.
- Briefly describe the CPWI Planning Framework (SPF), which supports the coalition's planning process.

Coalition Structure and Organization

- Explain the coalition's organizational structure and how it supports coalition members as they accomplish the work of the coalition, including workgroups, subcommittees, and fiscal agency relationships.
- Describe the coalition's decision-making processes including financial decisions.
- Describe the procedures in place to ensure effective communication and coordination among coalition members, workgroups, staff, and administration.
- Describe the procedures in place to ensure effective communication and coordination among partners, the media, policymakers, and others.
- Include an organizational chart illustrating the relationship between the coalition, workgroups, fiscal agent, and staff. In the organizational chart, identify the individuals associated with the coalition's leadership, workgroups, and subcommittees.

Membership Recruitment and Retention

- Explain the "rules" for membership, including who is considered a member, what constitutes membership, who gets to vote, and (if applicable) bylaws related to membership.
- Describe the coalition strategies for maintaining involvement and how the coalition will monitor membership participation and involvement in meetings, strategies, and activities.
- Describe the coalition's plan for ensuring participation of at least 8 of the 12 required community sectors identified in the Key Objectives, see page 10.
- Explain how the coalition includes the Prevention-Intervention Specialist (P/I) in the coalition.
- Explain how the coalition will ensure participation of grassroots/non-fiduciary/volunteer citizens (people who are not there in relation to their job) in the coalition.
- Explain how the coalition will recruit and provide orientation for new members, partners, agencies, and stakeholders to support the coalition's efforts.
- Include a list of Coalition Members in the appendix of the Plan using the template provided in Appendix 10: – page 52, of this Plan Guide.

Cultural Competency in Organizational Development

- Describe the demographic diversity of the community the coalition serves.
- Describe the norms, values, beliefs, practices, socioeconomic characteristics, risk and resiliency factors, cultural considerations, unique or special needs of your community.
- Explain the coalition's understanding of what it means to be a culturally competent coalition.
- Explain how the coalition will ensure cultural competency in your efforts.
- Describe the strategies the coalition uses to recruit and retain membership that significantly involves groups of individuals representative of your community.

Sustainability in Organizational Development

- Describe the coalition's policies and procedures that support the coalition efforts for the long-term.

DBHR Community Prevention & Wellness Initiative (CPWI) Community Coalition Guide

CAPACITY BUILDING

For the coalition's Strategic Plan the following is required:

Outreach

- Describe how the coalition shares goals with other substance abuse prevention programs or established alcohol and drug related policies in the community. Include how the coalition supports and makes use of collaboration and linkages with these other efforts (Public Health, DFC grantees, Community Networks, Community Mobilization, etc.). Include information on agency/coalition involvement with the community's other local substance abuse prevention coalition(s) if such an entity exists.
- Describe the coalition's plans for seeking input from and involving the community in coalition efforts and initiatives.
- Explain how the coalition will involve Key Leaders who are not coalition members in planning and implementation.

Training/Technical Assistance (TA)

- For each of the following, coalition staff, coalition members, and the community identify:
 - The training/TA completed to date related to the coalition's Plan.
 - Future training/TA planned.
 - How the coalition will determine the need for future trainings.

Cultural Competency in Capacity Building

- Describe the strategies and tools that the coalition will use to ensure that the outreach efforts to the community are inclusive. Include what is currently needed in your community to reach out to under-served populations and how the coalition will address those needs.
- Based on current level of cultural competence, describe the specific aspects/focus of Cultural Competency training or technical assistance that the coalition staff and members will participate in and/or conduct to ensure cultural competence.

Sustainability in Capacity Building

- Explain how the coalition will involve the key leaders and community members in promoting and continuing coalition efforts.

DBHR Community Prevention & Wellness Initiative (CPWI)

Community Coalition Guide

ASSESSMENT

*Note: CPWI is a community and state partnership and therefore, the **coalition's Assessment** includes information from the state assessment and the local assessment. The DBHR's priority is underage drinking, based on multiple and ongoing state-level needs assessments and alignment with the State Inter-agency Prevention Strategic Plan. For CPWI, consequence data and socio-demographic factors that are empirically related to the state's priority of underage drinking were incorporated to develop the **long-term consequences**, **behavioral health problems**, and **intervening variables**. These indicators were identified based on data quality, availability of data, and input from stakeholders as to relevance and interpretability. From these, a composite score was calculated. All of the school districts in each county were ranked according to level of risk based on the composite score. Selection of each community/school district is based on the highest need areas. The coalition should determine their priorities (behavioral health problems, intervening variables, and contributing factors) based on local assessment in congruence with the state's priorities.*

For the coalition's Strategic Plan the following is required:

Needs Assessment

Process:

- Provide a summary of the process used for collecting, compiling, and reviewing data including:
 - Describe who (coalition/workgroup) was involved in this review process, how they were involved, and how they were trained to do the work.
 - Describe what data was used in your Assessment and how it was collected and compiled. (For example, the epidemiological data, local community data, community survey and/or other information.)

Summary of Key Data:

- Provide a summary of the results of the coalition's review of the data including:
 - Provide a brief summary of key data (prevalence, trends, and contributing factors) from the Data Book, Community Survey, and other local sources that led to the coalition's priorities. Include charts and graphs of most important data to highlight in this section of the Plan.
 - Describe what helped the coalition understand the data and how the data was interpreted. (For example: reason for a 'spike' in data, change in the way data is reported into a system, focus groups, key informant interviews, etc.)
- Include detailed related data and Community Survey Results in the Appendix section of the Plan. Note: It is not necessary to include all data provided in the Data Book, just the pieces of data that the coalition used to determine priorities.

Needs Assessment Conclusions:

- Briefly describe the overall process used to determine/identify the coalition's conclusions and priorities. (i.e., what does the coalition care about and why? How did you decide this?) For example: prevalence rate, trends, economic impact, social impact, health disparities based on demographics, etc.)
- Explain how the identified priority **long-term consequences** impact your local community. If additional consequences are added, provide the specific data and other information that supports your choice for this priority.
- Explain how the identified priority **behavioral health problems** impact your local community. If additional behavioral health problems are added, provide the specific data and other information that supports your choice for this priority.
- Identify the coalition's prioritized **intervening variables/risk and protective factors** for each category (box) and provide the specific data and other information that supports your choice. The coalition must select at least one variable from the options provided per box. The coalition may add intervening variables.

DBHR Community Prevention & Wellness Initiative (CPWI)

Community Coalition Guide

- Identify the coalition’s prioritized **contributing factors** and provide data and other information that supports your choice for these priorities. Based on the intervening variables and community survey results, the coalition will determine the local conditions and contributing factors.

Note: Logic Model

The Needs Assessment section identifies the information to complete the first four columns of the coalition’s Logic Model: **red – consequences**; **purple – behavioral health problems**; **blue – intervening variables**; **orange – contributing factors**. Update the Logic Model to include the Assessment information using the instructions and template provided in beginning on page 49, of this Guide.

Resources Assessment

Process:

- Provide a summary of the process used for collecting, compiling, and reviewing community resources (programs, policies, strategies, or initiatives) focused on the coalition’s priority behavioral health problems and intervening variables including:
 - Describe who (coalition/workgroup) was involved in this review process and how they were involved.
 - Describe what information was collected, how it was compiled, and the criteria used to review the available local resources. (For example, service location, age of participants, costs, etc.)

Summary of Key Information:

- Provide a summary of the results of the coalition’s review of the resources information including:
 - What are the significant community partnerships in-place or that need to be developed to support the coalition’s priorities and efforts?
 - An overview of resources identified in your community that impact your prioritized intervening variables and/or contributing factors. Include the detailed information collected in the Appendix section of the Plan.
 - An overview of the gaps identified that demonstrate areas to focus substance abuse efforts (for example, not enough classes provided to meet outcome; lack of fidelity of programs being implemented to address a specific local condition; lack of services being provided for a local condition).

Resources Assessment Conclusions:

- Describe the coalition’s conclusions based on the key information and briefly how these conclusions connect to the strategies described in the next section. (For example, “*After reviewing information collected from our needs and resources assessment we determined that we have significant and effective resources available for children ages 5-12 to address youth that think they would be ‘viewed as cool if they drink’; however there are limited programs for youth ages 13-15, so we have decided that we need an evidence-based school curriculum at SuperStar Middle School...*”.)

Cultural Competency in Assessment

- Describe how the coalition worked with diverse and/or underserved populations in your community in developing and conducting the assessments.

Sustainability in Assessment

- Describe the coalition’s process for involvement and collaboration that was initiated through the assessment process that resulted in opportunities to strengthen or build partnerships for the future.

DBHR Community Prevention & Wellness Initiative (CPWI)

Community Coalition Guide

PLAN

For the coalition's Strategic Plan the following is required:

Process for Planning

- Provide a summary of how the coalition completed the entire planning process (i.e., who did what, when).
- Explain the process (who/how) for determining the coalition's goals, objectives, and strategies including who (coalition/workgroup) was involved and in what ways they were involved.

Goals, Objectives and Strategies

- Provide a summary of the goals, objectives and strategies chosen related to the priorities identified in your Assessment.
 - Be sure to include the coalition meetings, sustainability, cultural competence, renewal of assessments, and review of evaluation information as part of the coalition's strategies and activities.
 - *Note: A goal is a statement that explains what the community wishes to accomplish or change about the intervening variable. It sets the direction for the intermediate-outcome (2-5 years) to be achieved. Provide at least one objective for each goal. (For example, "Reduce family management problems.")*
 - *Note: An objective should address the local condition and break down the goal into smaller parts that provide specific, measurable actions through which the goal will be accomplished. Objectives define what the coalition expects to achieve through the coalition's efforts. Objectives are meant to set direction for the short-term (6 months-2 years) outcomes with realistic targets. (For example, "Improve family management skills in at least half of the middle school parents attending the classes.")*

Action Plan

- Provide a summary of programs and activities planned.
- Describe the amount of service being provided in relationship to the intended impact and available resources. If adequate resources are not available, describe what the coalition will do to seek additional resources.
- Complete and include in the Appendix to the Plan, the Action Plan using the instructions and template provided in Appendix 12: - beginning on page 54, of this Guide.

Cultural Competency in Plan

- Describe how the coalition worked with diverse and/or underserved populations in your community in the development of the goals and objectives and strategies selection.
- Briefly describe how the coalition's Plan addresses behavioral health disparities and the following: Demographics – race, ethnicity, religion, gender, age, geography, and socioeconomic status; Language and literacy; Sexual identity – sexual orientation and gender identity; disability; and the needs of veterans and military families, if applicable.

Sustainability in Plan

- Describe how the coalition will use the Strategic Plan in ongoing discussions to guide the work and efforts of the coalition.

Note: Logic Model

The Planning section identifies the information that allows you to complete the fifth column of the coalition's Logic Model: **green - Strategies & Local Implementation**. Update the Logic Model to include the Implementation information using the instructions and template provided in beginning on page 49, of this Guide.

DBHR Community Prevention & Wellness Initiative (CPWI) Community Coalition Guide

IMPLEMENTATION

For the coalition's Strategic Plan the following is required:

Structural Support for Implementation

- Describe the key structures needed to support implementation of this Plan's strategies, programs, and activities including, the coalition's role, what will help the coalition succeed, and what needs to be in place for that to happen (i.e., training, partnerships, communication, data systems, reporting systems).
- Provide a summary of how the activities/programs operate and identify features critical to implementation.
- Describe the role of coalition staff, members, volunteers, and partnering agencies in implementing the coalition's plan as described in the previous section.
- Explain the coalition's process for recruiting and confirming the partnerships needed to carry out these strategies and activities/programs.
- Explain how the coalition will actively engage media in the coalition's efforts.

Budget

- Provide a brief narrative summary of the resources allocated including DBHR funding and any other funding or in-kind resources that will support the coalition's implementation plan as described in the previous sections (Planning and Implementation). We encourage the coalition to think about the coalition's Plan as a document that encompasses all of the coalition work; however, the coalition is only required to submit a Plan for CPWI. Indicate if this is an overall coalition budget with all funding sources noted or if it only includes DBHR funding.
- Attach the coalition's budget detail using the template provided in Appendix 13: page 57, of this Guide. *Note: The budget detail should be submitted as a separate excel document with your Plan and does not need to be included in the required Appendix of the Plan.*

Cultural Competency in Implementation

- Explain how the coalition will ensure initiatives, activities, and programs will appropriately meet the cultural needs of the diverse residents of the community.

Sustainability in Implementation

- Describe what needs to be sustained and what human, material, and social resources are required to support those needs. This should include (but not limited to) funding, staffing, physical space, and use of office supplies that are available to the coalition and how the coalition plans to maximize resources available.

DBHR Community Prevention & Wellness Initiative (CPWI) Community Coalition Guide

REPORTING AND EVALUATION

For the coalition’s Strategic Plan the following is required:

Expected Outcomes (Baseline and Target Data)

- Describe the coalition’s intended long-term outcomes(impacts/changes) expected for goals and objectives and how those outcomes relate to the coalition’s Plan including the prioritized intervening variables, local conditions, and strategies. (i.e., what will be different in your community in four years as a result of the coalition’s efforts? why do you believe that this will work?)
- Process and Outcome Measures – For each strategy/program/activity, provide the process and outcome measures that are being tracked to ensure that the coalition is having an impact? *(See optional table below.)*
- Tools/Instruments used to collect information - for the strategy/program/activity, provide the tools/instruments the coalition will use to collect information on the process and outcome measures? *(See optional table below.)*

Below is an optional table for your use in answering the last two bullets above.

Program/Activity Name:

Measures	Tool/Instrument
Process Measures:	
Outcome Measures:	

Plan for Tracking and Reviewing Evaluation Information

Use of Evaluation information

- Describe how evaluation information will be shared and used by the coalition including the following:
 - What evaluation information will be shared within the coalition?
 - How often will the coalition be updated on strategies/activities progress toward outcomes, and what is the process that will be used to approve revisions if needed?
 - How it will be used by the coalition to update and improve the overall Plan.
- Describe how evaluation information will be shared with the community and key leaders including the following:

Who	What	Why	How
<i>Who will want to know about the coalition’s evaluations results?</i>	<i>What will they want to know about the coalition’s evaluation?</i>	<i>What will the coalition want them to know about the evaluation results?</i>	<i>How will the coalition provide them with this information?</i>
For example: coalition, city council, and/or DBHR.	For example: updated data on long-term outcomes, process information on programs, etc.	For example: for funding, support, and/or membership.	For example: PBPS coalition survey report to be discussed with coalition at November meeting.

DBHR Community Prevention & Wellness Initiative (CPWI) Community Coalition Guide

PBPS

- Provide a summary of how the coalition will ensure proper reporting to DBHR including the method that will be used for collecting information and how often the coalition will collect it.
- Describe how the coalition is ensuring strong implementation so that the coalition will meet performance-based contracting requirements based on the program(s) chosen.

Local evaluation (optional)

- Include anything else that the coalition plans to do beyond what is required by DBHR for evaluation.

Cultural Competency in Reporting and Evaluation

It is expected that all tasks associated with CPWI are conducted in a culturally competent manner.

- Explain the considerations the coalition has made in preparing the evaluation plan, including survey content and methods for conducting surveys that reflect sensitivity to the needs of diverse community members in understanding and responding to surveys.

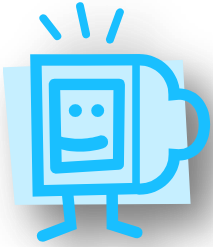
Sustainability in Reporting and Evaluation

It is expected that all tasks associated with CPWI include sustainability planning and implementation.

- Describe what relationships the coalition has developed that will ensure access to needed assessment and evaluation data (i.e., HYS, pre-/post-test, Coalition Assessment Tool, Community Survey, etc.).
- Explain what policies and procedures are in place to ensure ongoing evaluation efforts.

Note: Logic Model

The Reporting and Evaluation section identifies the information that allows you to complete the fifth column of the coalition's Logic Model: **gray - Evaluation Plan**. Update the Logic Model to include the Reporting and Evaluation information using the instructions and template provided in beginning on page 49, of this Guide.



APPENDIX

Section Contents

Appendix 1:	SAMPLE Timeline to Prepare for Implementing CPWI	41
Appendix 2:	SAMPLE County Risk Profile.....	42
Appendix 3:	SAMPLE Community Selection Packet	43
Appendix 4:	SAMPLE Timeline for Writing a <i>New Strategic Plan</i>	44
Appendix 5:	SAMPLE Timeline for <i>Updating your Strategic Plan 2015</i>	45
Appendix 6:	Strategic Plan Outline TEMPLATE	46
Appendix 7:	Cover Letter SAMPLE.....	47
Appendix 8:	SAMPLE Data Book.....	48
Appendix 9:	Logic Model.....	49
	<i>Completing the Coalition’s Logic Model:.....</i>	<i>49</i>
Appendix 10:	List of Coalition Members TEMPLATE	52
Appendix 11:	Community Survey Results	53
Appendix 12:	Action Plan.....	54
	<i>Completing the Coalition’s Action Plan:.....</i>	<i>54</i>
	<i>Action Plan TEMPLATE.....</i>	<i>55</i>
	<i>Action Plan SAMPLE.....</i>	<i>56</i>
Appendix 13:	Budget TEMPLATE	57
Appendix 14:	Plan-on-a-Page TEMPLATE.....	58
Appendix 15:	Plan-on-a-Page SAMPLE	59
Appendix 16:	New/Media Release TEMPLATE	60
Appendix 17:	Community Profile Brochure TEMPLATE.....	61
Appendix 18:	PBPS Coalition Program Entry Instructions.....	62
Appendix 19:	Commonly Used Prevention Resources	64

DBHR Community Prevention & Wellness Initiative (CPWI) Community Coalition Guide

Appendix 1: SAMPLE Timeline to Prepare for Implementing CPWI

Note - This timeline is a sample using the start month of July for a new CPWI community to reference in getting started and preparing to implement CPWI. Each county/coalition should work with your Prevention System Manager if assistance is needed to establish your timeline. Required deadlines have been noted below in orange.

Steps		By Nov	Dec	Jan	Feb	Mar	Apr	May	Jun	Jul	Aug	Sept
Step 1.	Participate in our monthly CPWI Learning Community Meetings.											
Step 2.	Register and participate in The Athena Forum.											
Step 3.	Review CPWI materials available. Start to learn about coalition development and strategic planning.											
Step 4.	County and ESD review 'County Risk Profile' report to begin community selection process.											
Step 5.	Develop a plan and timeline for completing selection packet. (Make sure timing is congruent with school district and county approvals needed.)											
Step 6.	Determine roles and responsibilities for county/ESD in approaching schools and coalitions/community members.											
Step 7.	Review community and school readiness of potential highest need communities identified in 'County Risk Profile.'											
Step 8.	Determine willingness of the highest need community/school district to participate and engage in CPWI.											
Step 9.	Collect Community Sector Letters of Support or signed Sector Support Statements and Coalition Commitment Packet, if applicable.											
Step 10.	Complete Community Selection Packet and submit to DBHR.											
Step 11.	County and/or coalition issue media release within 60 days following approval of community selection.											
Step 12.	Get signed MOU from school selected to participate (submit to DBHR) and if needed, get signed MOU between county and coalition.											
Step 13.	Build relationships in community and recruit coalition members including representatives who submitted letters of support.											
Step 14.	County reviews community coalition coordinator job description and hiring/designation process with DBHR.											
Step 15.	Post job description or identify community coalition coordinator.											
Step 16.	County hire/designate coordinator by July. Provide orientation and training as needed											
Step 17.	Set up work space for coordinator.											
Step 18.	County coordinate with ESD to confirm school participation in CPWI and implementation of SAPISP and P-I services within 30 days prior to start of school year.											
Step 19.	Set up check-in meeting schedule with Prevention System Manager.											
Step 20.	Recruit coalition members to CPWI Coalition meetings.											
Step 21.	Conduct monthly CPWI Coalition meetings, if not already established.											
Step 22.	Coalition begins to establish CPWI coalition structure.											
Step 23.	Begin and continue strategic planning process (see Strategic Planning Requirements for more information).											
Step 24.	Host Community Coalition Orientation.											

DBHR Community Prevention & Wellness Initiative (CPWI) Community Coalition Guide

Appendix 2: SAMPLE County Risk Profile

The picture below is for reference only. The County Risk Profiles are developed by DBHR and sent to counties. Risk Profile Summaries can be found at www.theAthenaForum.org. (See page 5 for download instructions.)

County Community Risk Profile (February 2013):				County			
Highest Risk Score		Risk Ranking		Risk Category Rank*		Contextual Indicators	
District	Population: Age 0-17	Risk Percentile	Risk Indicator with Data	Consumption (Alcohol)	Consequence	Economic Deprivation	Troubled Family
	3402	89	28	Very High	High	Average	Average
	18,225	79	28	Average	High	Average	Average
	3,498	74	28	Average	Average	Average	Average
	724	68	28	Average	High	Average	High
	3,299	65	28	Average	High	Average	Average
Other School Districts							
District	Population: Age 0-17	Risk Percentile	Risk Indicator with Data	Consumption (Alcohol)	Consequence	Economic Deprivation	Troubled Family
	22,936	60	28	Average	Average	Average	Average
	9,631	51	28	Average	Average	Low	Average
	11,753	43	28	Average	Average	Low	Average
	30,585	26	28	Low	Average	Average	Average
	13,710	34	28	Average	Average	Very Low	Low
	33,400	31	28	Low	Average	Low	Low
	6,994	30	28	Low	Average	Low	Average
	7,522	25	28	Low	Average	Average	Average
	-	-	-				
	-	-	-				
	-	-	-				

NOTE:

This risk profile reflects the risk levels of this county as of February 2013. School districts with no high schools are not included in this summary. Please note risk levels and risk rankings may change over time.

DBHR Community Prevention & Wellness Initiative (CPWI) Community Coalition Guide

Appendix 4: SAMPLE Timeline for Writing a New Strategic Plan

The chart below is for reference and is not required to be submitted with the Plan. Each coalition should work directly with their Prevention System Manager to establish your timeline. A Microsoft Excel template - has been prepared for your use and can be found at www.theAthenaForum.org. (See page 5 for download instructions.)

Suggested Timeline to Prepare and Write Coalition Strategic Plan

Steps		Jul	Aug	Sep	Oct	Nov	Dec	Jan	Feb	Mar	Apr	May
Step 1	Develop a timeline for drafting, reviewing, and revising the coalition's Plan.											
Step 2	Review this Guide, chapter 4.											
Step 3	Get the coalition organized (Getting Started and Capacity Building).											
Step 4	Document key decisions about how the coalition is organized.											
Step 5	Building the coalition's Cultural Competency and Sustainability.											
Step 6	The coalition completes the Needs and Resource Assessments (Assessment).											
Step 7	Begin writing summary reports from each of the Assessments.											
Step 8	Write a first draft of the Plan.											
Step 9	The coalition reviews the first draft of Plan.											
Step 10	Send a draft of the Plan to your Prevention System Manager.											
Step 11	Revise Plan based on the feedback.											
Step 12	The coalition develops strategies, activities and timelines for implementation (Planning).											
Step 13	Write the coalition's Plan for Action and Implementation sections of the Plan.											
Step 14	The coalition reviews the revised draft of the Strategic Plan.											
Step 15	Send a draft of the Plan to your Prevention System Manager.											
Step 16	Revise Plan based on the feedback.											
Step 17	The coalition develops an evaluation plan.											
Step 18	Write the Evaluation section, and Executive Summary of the coalition's Strategic Plan.											
Step 19	The coalition reviews revised draft of Strategic Plan.											
Step 20	Send a draft of the Plan to your Prevention System Manager.											
Step 21	Make final revisions to the Plan based on feedback.											
Step 22	Get coalition approval of final Plan.											
Step 23	Submit Plan to DBHR by March 31 for review.											
Step 24	Once approved, publicize Plan to coalition, partners, and community.											

DBHR Community Prevention & Wellness Initiative (CPWI) Community Coalition Guide

Appendix 5: SAMPLE Timeline for Updating your Strategic Plan 2015

The chart below is for reference and is not required to be submitted with the Plan. Each coalition should work directly with their Prevention System Manager to establish your timeline. A Microsoft Excel template - has been prepared for your use and can be found at www.theAthenaForum.org. (See page 5 for download instructions.)

Steps		Oct	Nov	Dec	Jan	Feb	Mar	Apr	May	June	July
Step 1	Develop a timeline for drafting, reviewing, and revising the coalition's Updated Plan.										
Step 2	Review this Guide, chapter 4 – Assessment Section.										
Step 6	The coalition completes the Needs and Resource Assessments (Assessment).										
Step 7	Begin writing summary reports from each of the Assessments.										
Step 12	The coalition reviews strategies, activities and timelines for implementation (Planning) based on updated assessment.										
Step 13	Update the coalition's Plan for Action and Implementation sections of the Plan, as needed.										
Step 14	The coalition updates evaluation plan, if needed.										
Step 16	The coalition reviews revised draft of updated Strategic Plan.										
Step 17	Send a draft of the updated Plan to your Prevention System Manager by June 15, 2015.										
Step 18	Make final revisions to the updated Plan based on feedback.										
Step 19	Get coalition approval of final updated Plan if feedback indicated need for revision.										
Step 21	Once approved, publicize with coalition, partners, and community.										
Step 22	Update Community Profile, as needed										
Step 23	Celebrate!										

DBHR Community Prevention & Wellness Initiative (CPWI) Community Coalition Guide

Appendix 6: Strategic Plan Outline TEMPLATE

The information on the following page is for reference. A Microsoft Word template has been prepared for your use and can be found at www.theAthenaForum.org. (See page 5 for download instructions.)

Executive Summary/Introduction

Organizational Development (Getting Started)

- *Mission Statement and Key Values*
- *Coalition Structure and Organization*
- *Membership Recruitment and Retention*
- *Cultural Competency in Organizational Development*
- *Sustainability in Organizational Development*

Capacity Building

- *Outreach*
- *Training/Technical Assistance (TA)*
- *Cultural Competency in Capacity Building*
- *Sustainability in Capacity Building*

Assessment

- *Needs Assessment*
 - *Process*
 - *Summary of Key Data*
 - *Needs Assessment Conclusions*
- *Resources Assessment*
 - *Process*
 - *Summary of Key Information*
 - *Resources Assessment Conclusions*
- *Cultural Competency in Assessment*
- *Sustainability in Assessment*

Plan

- *Process for Planning*
- *Goals, Objectives and Strategies*
- *Action Plan*
- *Cultural Competency in Plan*
- *Sustainability in Plan*

Implementation

- *Structural Support for Implementation*
- *Budget*
- *Cultural Competency in Implementation*
- *Sustainability in Implementation*

Reporting and Evaluation

- *Expected Outcomes (Baseline and Target Data)*
- *Plan for Tracking and Reviewing Evaluation Information*
 - *Use of Evaluation Information*
 - *PBPS*
 - *Local Evaluation*
- *Cultural Competency in Reporting and Evaluation*
- *Sustainability in Reporting and Evaluation*

Appendix to Coalition Strategic Plan

- Appendix 1. Logic Model
- Appendix 2. List of Coalition Members
- Appendix 3. Needs Assessment
- Appendix 4. Community Survey Results
- Appendix 5. Resources Assessment
- Appendix 6. Action Plan

Attachment 1: Budget

DBHR Community Prevention & Wellness Initiative (CPWI) Community Coalition Guide

Appendix 7: Cover Letter SAMPLE

[coalition letterhead]

[Date]

[Name], Prevention System Manager
Address block

Dear [name]:

On behalf of all of the partner agencies and organizations of the [coalition name], I am pleased to submit the [name of plan] to the Division of Behavioral Health and Recovery. Our coalition is excited to move forward on our [strategies of....] to address substance abuse prevention in our community.

If you have any questions, please contact me at [phone], or by e-mail at [email] or our Coalition Coordinator, [name] at [phone], or by email at [email].

We appreciate your consideration.

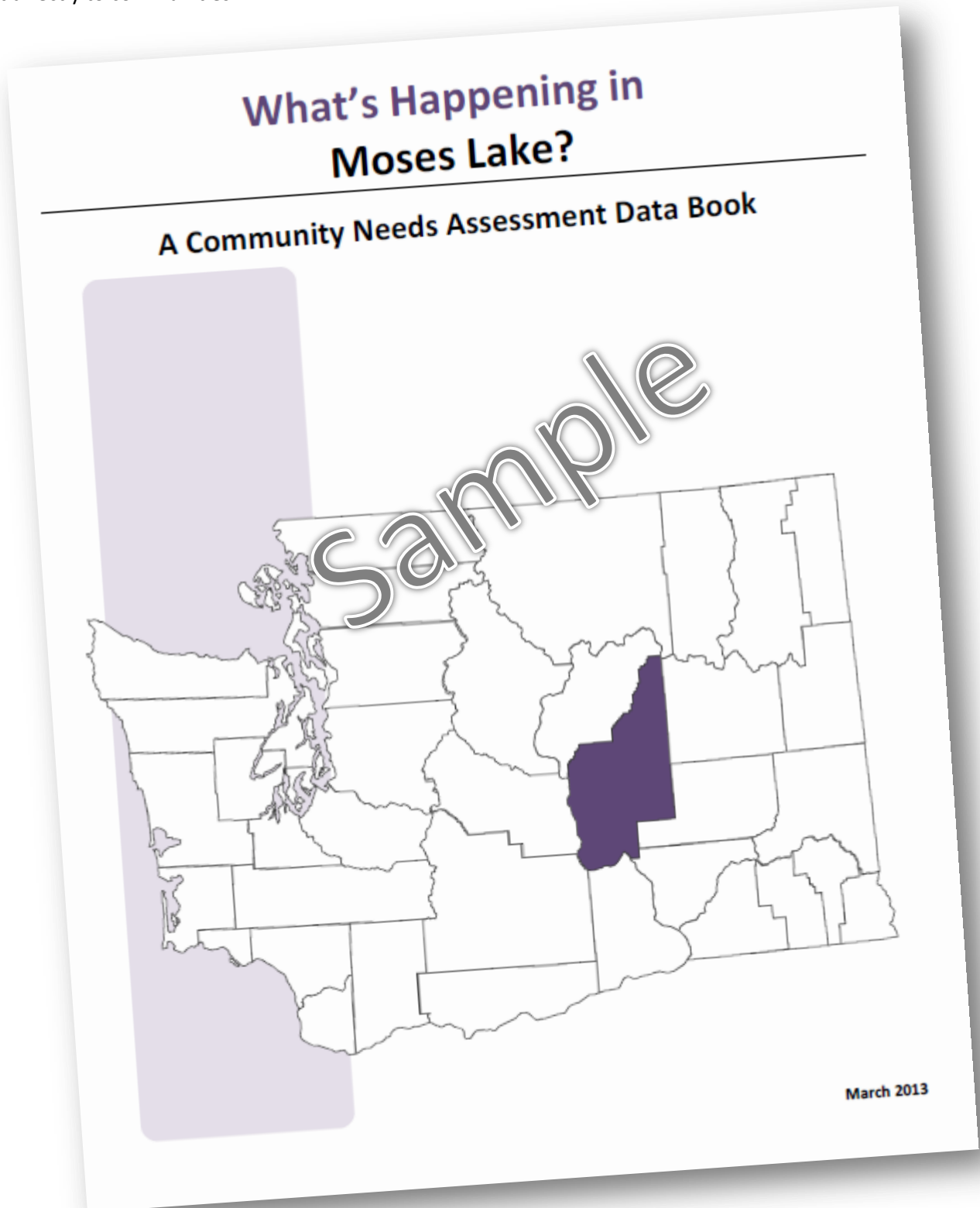
Sincerely,

[Name]
Coalition Chair

**DBHR Community Prevention & Wellness Initiative (CPWI)
Community Coalition Guide**

Appendix 8: SAMPLE Data Book

The picture of the cover of a Data Book below is for reference only. The Community Data Books are developed by DBHR and sent directly to communities.



DBHR Community Prevention & Wellness Initiative (CPWI)

Community Coalition Guide

Appendix 9: Logic Model

Note: CPWI is a community and state partnership and therefore, the **coalition's Assessment** includes information from the state assessment and the local assessment. The CPWI Logic Model is based on the state priority of reducing underage drinking. The long-term consequences, behavioral health problems, and intervening variables were established through the state assessment and selection of each community is based on the highest need areas. The coalition should determine priorities based on local assessment in congruence with the state priorities.

Completing the Coalition's Logic Model:

Part 1. Assessment: *(Columns 1-4 are completed as part of the coalition's Assessment.)*

- Column 1. **Long-Term Consequences:** The coalition must include the long-term consequences identified in the Logic Model. Based on the Assessment, the coalition will need to determine if any additional long-term consequences need to be added to the logic model. If needed, enter Long-Term Consequences into the boxes in the red column.
- Column 2. **Behavioral Health Problems:** The coalition must include the Behavioral Health Problems identified in the Logic Model. Based on the Assessment, the coalition will need to determine if any additional behavioral health problems need to be added to the logic model. If needed, enter Behavioral Health Problems into the boxes in the purple column.
- Column 3. **Intervening Variables:** The coalition must select at least one variable from the options provided. Based on the Assessment, the coalition will need to select the intervening variables that are most relevant locally from the options provided within each box. Enter intervening variables into the boxes in the blue column. The coalition may add intervening variables.
- Column 4. **Local Conditions and Contributing Factors:** Based on the intervening variables and community survey results, the coalition will determine the local conditions and contributing factors. Enter local conditions and contributing factors into the boxes in the orange column connected to the appropriate intervening variables. You may add additional boxes if needed.

Part 2. Plan: *(Column 5 is completed as part of the coalition's Plan.)*

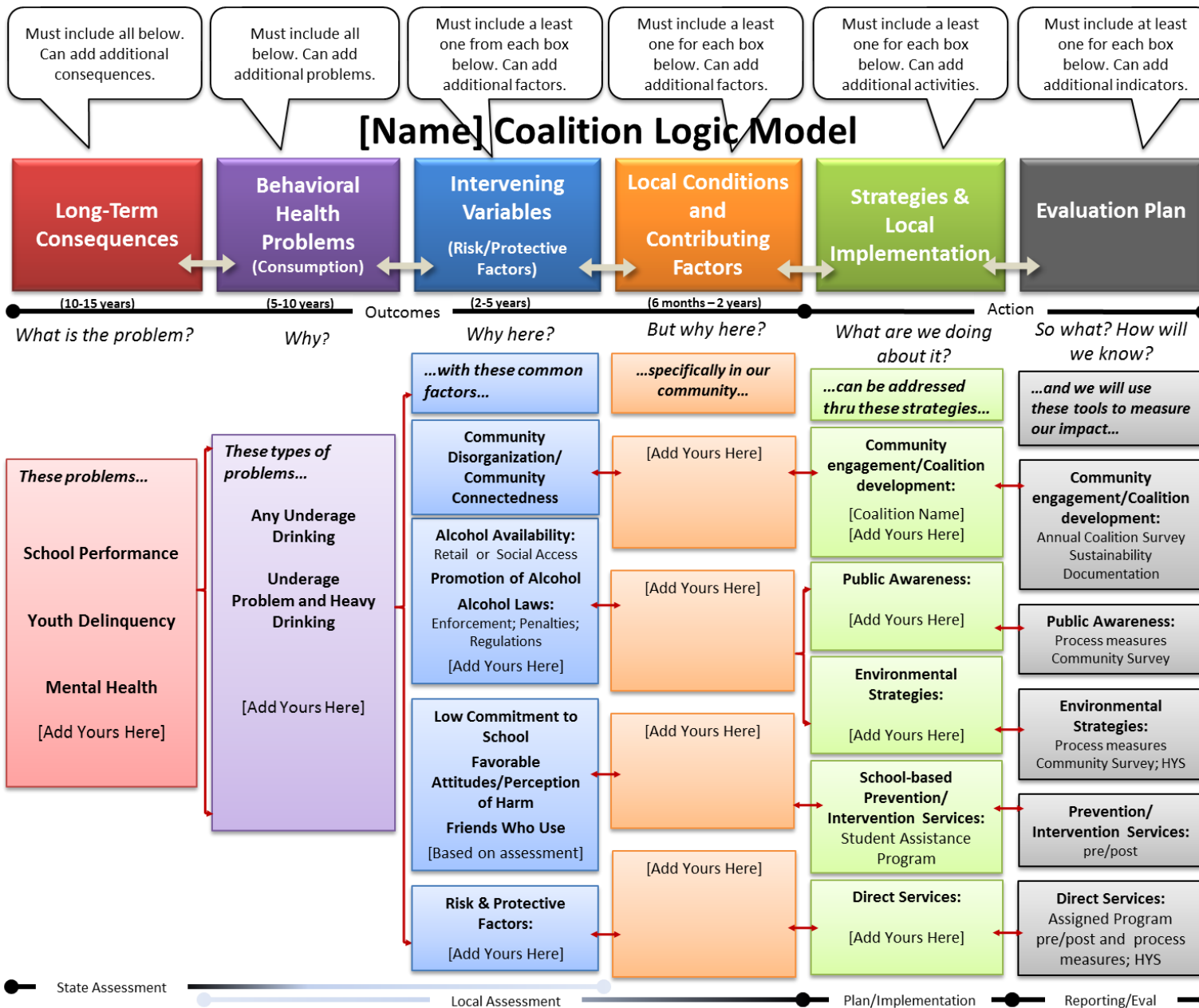
- Column 5. **Strategies and Local Implementation Activities:** The coalition will develop strategies and local implementation activities/programs to address the local conditions. Enter strategies and local implementation activities into the boxes provided in the green column. The coalition should include a minimum of one activity for each strategy area (box) listed. You may add additional boxes if needed.

Part 3. Reporting and Evaluation: *(Columns 6 is completed as part of the coalition's Reporting and Evaluation.)*

- Column 6. **Reporting and Evaluation:** The coalition decides the Reporting and Evaluation methods and tools that will be used for tracking outcomes for each strategy. Enter the method and tools to be used into the boxes in the gray column connected to each strategy/activity.

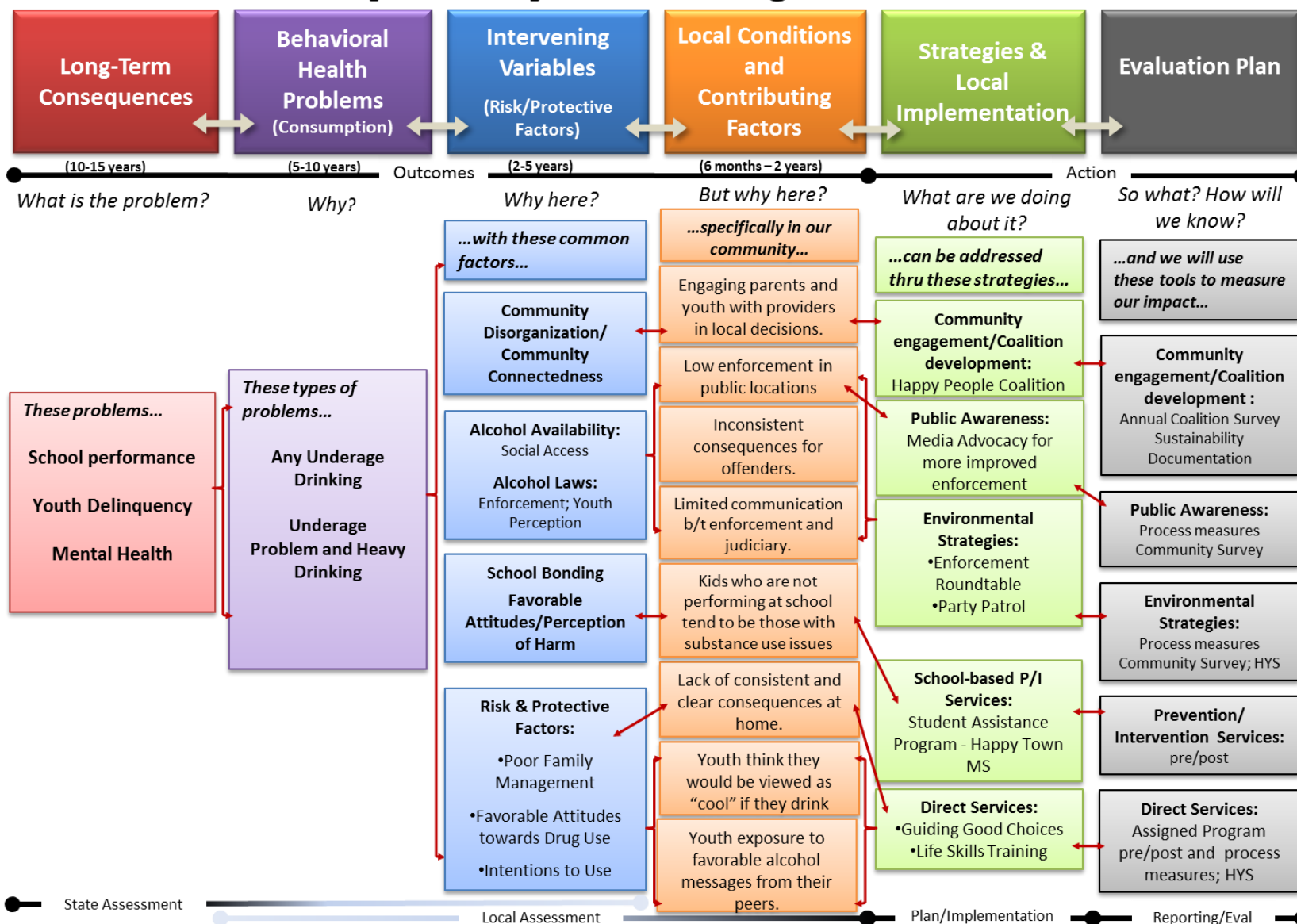
The pictures on the following pages are for reference. A Microsoft PowerPoint template has been prepared for your use and can be found at www.theAthenaForum.org. (See page 5 for download instructions.)

DBHR Community Prevention & Wellness Initiative (CPWI) Community Coalition Guide



DBHR Community Prevention & Wellness Initiative (CPWI) Community Coalition Guide

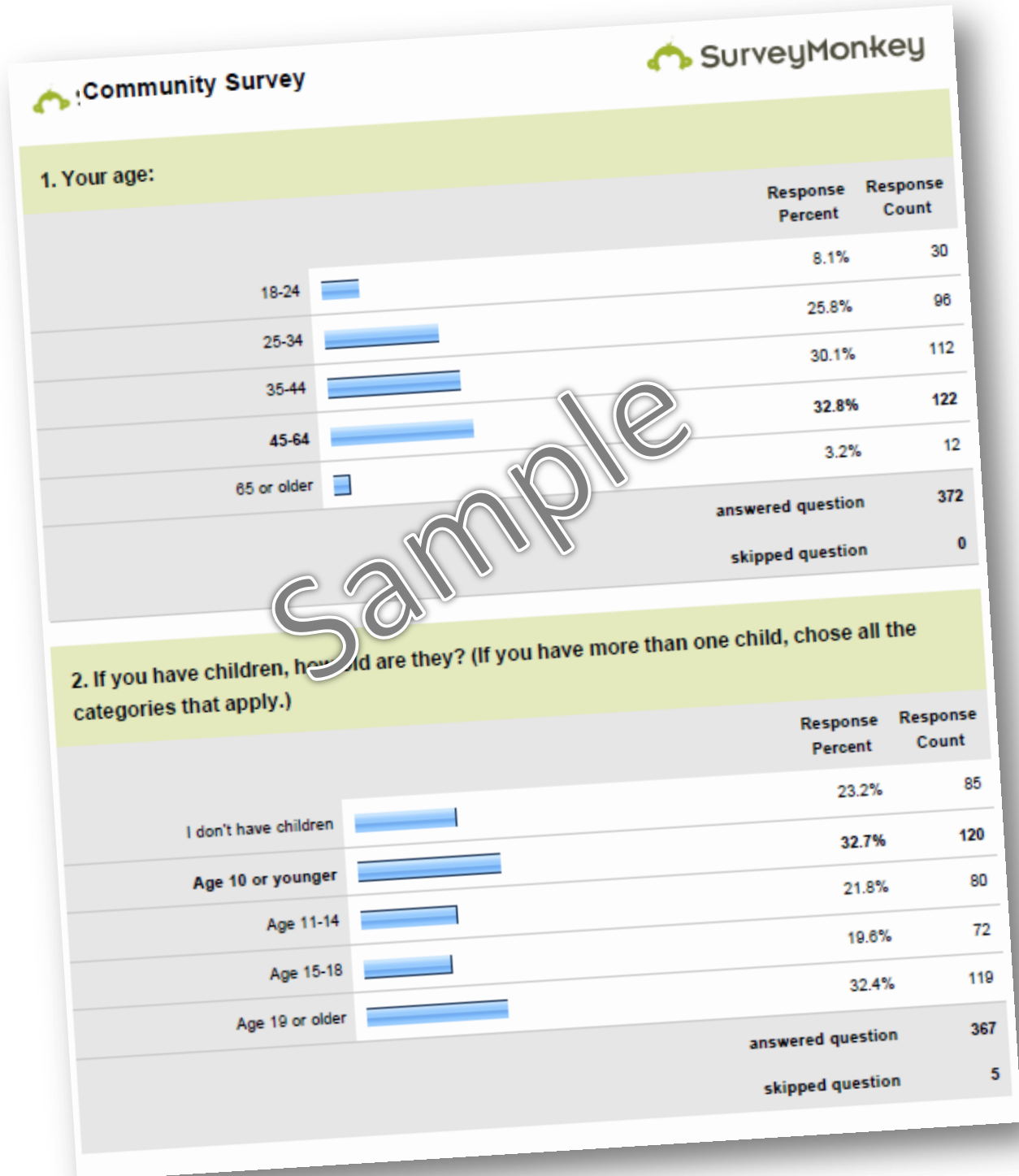
[SAMPLE] Coalition Logic Model



DBHR Community Prevention & Wellness Initiative (CPWI) Community Coalition Guide

Appendix 11: Community Survey Results

Include a copy of the Community Survey Results in the Attachments of the Plan using report provided by DBHR. The coalition will receive this report following the administration of the community survey.



DBHR Community Prevention & Wellness Initiative (CPWI) Community Coalition Guide

Appendix 12: Action Plan

Completing the Coalition's Action Plan:

Include an Action Plan in the appendix of the Plan using the template provided in Appendix 12: beginning on page 54, of this Guide.

The Action Plan should provide details for each goal, objective and strategy on the following:

- Activity/Program - Name of activity/program.
- Brief Description - Briefly state the main purpose of the activity.
- When - When will this take place? What is timeframe for this activity?
- How - How much? How often?
- Who - Target Population. Number of people impacted. Who is this service for?
- Lead Organization - Which organization is responsible to ensure this happens? Who is conducting?
- Lead Coalition Member/Responsible Party(ies)/ Change Agent - Who from the coalition is making sure this gets done?

Be sure to include, the coalition meetings, sustainability, cultural competence, renewal of assessments, and review of evaluation information as part of the coalition's strategies and activities.

Sixty percent of the programs implemented with DBHR funds must be evidence-based programs (EBP). The EBP list can be found in PBPS and the Athena Forum. Additionally, an online searchable database is available at http://docs.theathenaforum.org/learning_library/ebp.

DBHR Community Prevention & Wellness Initiative (CPWI) Community Coalition Guide

Action Plan TEMPLATE

The information on the following page is for reference. A Microsoft Word template has been prepared for your use and can be found at www.theAthenaForum.org. (See page 5 for download instructions.)

[Name] Coalition

Goal 1: *(Should be same as stated in the narrative in the ‘Plan’ section) Note: A goal is a statement that explains what the community wishes to accomplish or change about the intervening variable (Risk or Protective Factor). It sets the direction for the intermediate-outcome (2-5 years) to be achieved. (For example, “Reduce family management problems.”) **

Objective 1.1: *(Should be same as stated in the narrative in the ‘Plan’ section) Note: An objective should address the local condition and break down the goal into smaller parts that provide specific, measurable actions through which the goal will be accomplished. Objectives define what the coalition expects to achieve through the coalition’s efforts. Objectives are meant to set direction for the short-term (6 months-2 years) outcomes with realistic targets. (For example, “Improve family management skills in at least half of the middle school parents attending the classes.”) **

Strategy 1.1.1: *(Should be same as stated in the narrative in the ‘Plan’ section) Provide a summary of programs and/or activities planned.**

Activity/Program	Brief Description	When	How	Who	Lead Organization	Responsible Party (ies)
Name of activity/program	<i>Briefly state the main purpose of the activity</i>	<i>When will this take place? What is timeframe for this activity?</i>	<i>How much? How often?</i>	<i>Who is this service for? How many people impacted?</i>	<i>Who is conducting?</i>	<i>Who from the coalition is making sure this gets done?</i>

**Work with your Prevention System Manager if needed.*

DBHR Community Prevention & Wellness Initiative (CPWI) Community Coalition Guide

Action Plan SAMPLE

Happy People Coalition



Goal: Reduce family management problems

Objective: Improve family management skills in at least half of the middle school parents.

Strategy: Education

Activity/Program	Brief Description	When	How	Who	Lead Organization	Responsible Party (ies)
<i>Name of activity/program</i>	<i>Briefly state the main purpose of the activity</i>	<i>When will this take place? What is timeframe for this activity?</i>	<i>How much? How often?</i>	<i>Who is this service for? How many people impacted?</i>	<i>Who is conducting?</i>	<i>Who from the coalition is making sure this gets done?</i>
Strengthening Families Program	This class will teach family management skills	September 10– October 15, 2014 January 20-March 15, 2015 April-June 2015	3 groups - 2 hour sessions @ 1 per week for 7 weeks	25 local middle school parents. (Minimum of 10 immigrant families.)	Family Support Center	Jane Smith, Program Manager
Parent Tools Program	Distribution of interactive parenting tool kits at doctor's office with 1-1 education provided	September 2014 – March 2015	Minimum of 3 kits per day for 6 months	540 Families in Happy Town.	Better Health Clinic	Dr. Smith

DBHR Community Prevention & Wellness Initiative (CPWI) Community Coalition Guide

Appendix 13: Budget TEMPLATE

The budget detail should be submitted as a separate excel document with your Plan and does not need to be included in the required Appendix of the Plan. A Microsoft Excel template has been prepared for your use and can be found at www.theAthenaForum.org. (See page 5 for download instructions.) Picture below is for reference.

		[Name] Coalition																
		ONE YEAR BUDGET for July 1, 2014-June 30, 2015											Because this action plan only runs through June 30, 2015, and the PFS funding is anticipated to run through Sept 29, 2015. You may still plan to expend funds the last three months of FFY 2015 for PFS, but it will not be reflected on this budget.					
		<i>has retired (delete)</i>																
		SFY 2015 (July 1, 2014 - June 30, 2015)							July 1, 2014- Sept 29, 2014		September 30, 2014 - June 30, 2015							
		SAPT Block Grant - Prevention							PFS		Partnership for Success (PFS)							
Category	Line Item	Rate for Calculation	CSAP Strategy 1: Information Dissemination	CSAP Strategy 2: Education	CSAP Strategy 3: Alternatives	CSAP Strategy 4: Problem Identification & Community-Based Process	CSAP Strategy 5: Community-Based Process	CSAP Strategy 6: Environmental	CSAP Strategy 7: Other Training	PFS BALANCE REMAINING from previous budget July 1, 2014-September 29, 2014	CSAP Strategy 1: Information Dissemination	CSAP Strategy 2: Education	CSAP Strategy 3: Alternatives	CSAP Strategy 4: Problem Identification & Referral	CSAP Strategy 5: Community-Based Process	CSAP Strategy 6: Environmental	CSAP Strategy 7: Other Training	Subtotals
Admin	8% Administration allowed with PFS funding									[Enter Total Remaining								\$ -
Salary	Community Coalition Coordinator: (name)																	\$ -
	Community Coalition Coordinator: (name)																	\$ -
	Subtotal																	\$ -
Benefits	Community Coalition Coordinator: (name)																	\$ -
	Community Coalition Coordinator: (name)																	\$ -
	Subtotal																	\$ -
Coordinator Travel/ Professional Development	mileage																	\$ -
	air																	\$ -
	hotel																	\$ -
	lodging																	\$ -
	transportation																	\$ -
	registration fees																	\$ -
	per diem																	\$ -
	Subtotal																	\$ -
Programs/Strategies	Community Coalition: Universal Indirect																	\$ -
	Salary: (name)																	\$ -
	Benefits																	\$ -
	Travel																	\$ -
	Professional Services (name)																	\$ -
	Program Supplies																	\$ -
	Program Printing																	\$ -
	Subtotal																	\$ -
	Direct Service: (name of program) [IOM Type]																	\$ -
	Salary: (name)																	\$ -
	Benefits																	\$ -
	Travel																	\$ -
	Professional Services (name)																	\$ -
	Program Supplies																	\$ -
	Program Printing																	\$ -
	Subtotal		\$ -	\$ -	\$ -	\$ -	\$ -	\$ -	\$ -	\$ -	\$ -	\$ -	\$ -	\$ -	\$ -	\$ -	\$ -	\$ -
	Direct Service: (name of program) [IOM Type]																	\$ -
	Salary: (name)																	\$ -
	Benefits																	\$ -
	Travel																	\$ -
	Professional Services (name)																	\$ -
	Subtotal																	\$ -
	Public Awareness: (name of strategy) [IOM Type]																	\$ -
	Salary: (name)																	\$ -
	Benefits																	\$ -
	Travel																	\$ -
	Professional Services (name)																	\$ -
	Strategy Supplies																	\$ -
	Strategy Printing																	\$ -
	Subtotal		\$ -	\$ -	\$ -	\$ -	\$ -	\$ -	\$ -	\$ -	\$ -	\$ -	\$ -	\$ -	\$ -	\$ -	\$ -	\$ -
	Coalition / Community Training: Professional Services (name or training event)																	\$ -
	Registration Fees																	\$ -
	Supplies (if applicable)																	\$ -
	Printing (if applicable)																	\$ -
	Travel Costs																	\$ -
	Subtotal																	\$ -
	Coalition / Community Training: Professional Services (name or training event)																	\$ -
	Registration Fees																	\$ -
	Supplies (if applicable)																	\$ -
	Printing (if applicable)																	\$ -
	Travel Costs																	\$ -
	Subtotal																	\$ -
	Coalition / Community Training: Professional Services (name or training event)																	\$ -
	Registration Fees																	\$ -
	Supplies (if applicable)																	\$ -
	Printing (if applicable)																	\$ -
	Travel Costs																	\$ -
	Subtotal																	\$ -
Summary			SAPT Block Grant - Prevention SFY 2015							PFS July 1, 2014- Sept 29, 2014		Partnership for Success FFY 2015						
	Administration									\$ -								\$ -
	Salary and Benefits		\$ -	\$ -	\$ -	\$ -	\$ -	\$ -	\$ -	\$ -	\$ -	\$ -	\$ -	\$ -	\$ -	\$ -	\$ -	\$ -
	Coordinator Training/Travel Strategies and Programs		\$ -	\$ -	\$ -	\$ -	\$ -	\$ -	\$ -	\$ -	\$ -	\$ -	\$ -	\$ -	\$ -	\$ -	\$ -	\$ -
	Coalition/Community Training		\$ -	\$ -	\$ -	\$ -	\$ -	\$ -	\$ -	\$ -	\$ -	\$ -	\$ -	\$ -	\$ -	\$ -	\$ -	\$ -
	Subtotals		\$ -	\$ -	\$ -	\$ -	\$ -	\$ -	\$ -	\$ -	\$ -	\$ -	\$ -	\$ -	\$ -	\$ -	\$ -	\$ -

If this includes SAPT carry over 2014 please note that here and include in your budg: 20H Carry Over:

**DBHR Community Prevention & Wellness Initiative (CPWI)
Community Coalition Guide**

Appendix 14: Plan-on-a-Page TEMPLATE

This is an optional template for your use in working with the coalition. It is intended to be a one-page summary of the various decisions the coalition has made for the Plan. It can be helpful to use as a communication piece for the coalition and the broader community. The coalition may choose to use this as the Executive Summary. The information on the following page is for reference. A Microsoft Word template has been prepared for your use and can be found at www.theAthenaForum.org. (See page 5 for download instructions.)

**[Coalition Name & LOGO]
Summary Plan**

Approved at Coalition Meeting on [DATE].

What	Mission:	<i>What is the coalition mission or vision statement?</i>
	Theory of Change:	<i>What research framework is the coalition using and how does that framework support the coalition's expected change in the community?</i>
	Strategies:	<i>What strategies will the coalition use? (e.g. environmental, direct services, community organizing, etc.)</i>
	Operating Principles:	<i>What are key principles on which the coalition bases their decisions?</i>
How	Programs/ Projects/ Activities:	<i>What programs, projects and/or activities is the coalition doing?</i>
	Structure:	<i>What is the organizational structure of the coalition? (e.g. Full Coalition, Leadership committee, ad-hoc committees, youth councils, etc.)</i>
	Operational Functioning:	<i>What are key operating functions? (i.e., How are decisions made? What are rules for membership, etc.?)</i>
Resources	Funding:	<i>What major sources of funds does the coalition use?</i>
	Support:	<i>What non-monetary resources does the coalition have? (i.e., volunteers, staff, training, partnerships, etc.)</i>

**DBHR Community Prevention & Wellness Initiative (CPWI)
Community Coalition Guide**

Appendix 15: Plan-on-a-Page SAMPLE

This is a sample for your reference.



**Happy People Coalition
Summary Plan**

Approved at Coalition Meeting on March 15, 2014.

What	Mission:	The Coalition is working to prevent youth violence and substance abuse by working in and with communities to strengthen families and increase positive development.
	Theory of Change:	Use Risk and Protective Factor research framework to change community and family outcomes, which will contribute to the reduction and prevention of youth violence and youth substance abuse. Prioritized following risk factors: <ul style="list-style-type: none"> • Community Disorganization and Community connectedness. • Social Access to Alcohol • Alcohol law enforcement and youth perception. • School bonding, Social skills, and Friends who use. • Poor Family Management • Favorable attitudes towards drug use and intentions to use. And the protective factors of Bonding and Healthy Beliefs and Clear Standards
	Strategies:	Community engagement/coalition development, Media Advocacy, and Service Collaboration; and Parent and Youth Education.
	Operating Principles:	We believe in community involvement and inclusion in strategic planning and implementation. Our coalition includes a wide variety of community members and youth, local non-profit organizations, school representatives, law enforcement, service agencies, parents and faith-based and business leaders.
How	Programs/ Projects/ Activities:	<ul style="list-style-type: none"> • Coalition Meetings (<i>Monthly meetings of full Coalition and Leadership Committee; ad-hoc meetings as needed</i>) • Media advocacy for improved enforcement, Law Enforcement Roundtable and Party Patrol. • Student Assistance Program (<i>Prevention-Intervention Specialist in middle school</i>) • <i>Guiding Good Choices Parenting Program</i> • <i>Life Skills Training student program</i>
	Structure:	Local Community Coalition with Executive Leadership Committee and ad-hoc Planning Workgroups and Youth Council.
	Operational Functioning:	Membership: voting members are to attend ¾ of the meetings annually. All partners and supporters are encouraged to participate as available. Meetings are open to the public. Meeting Protocol: Coalition uses Roberts Rules as general guidelines for facilitation of meetings and works to build consensus whenever possible. Coalition votes on key decisions regarding policy, fiscal and strategy decisions. Must have quorum to validate vote.
Resources	Funding:	Public and private sources.
	Support:	Coalition volunteers. Staffing support (<i>.5 FTE Coalition Coordinator and 1.0 FTE P-I Specialist</i>) County/ESD/DBHR technical assistance.

DBHR Community Prevention & Wellness Initiative (CPWI) Community Coalition Guide

Appendix 16: New/Media Release TEMPLATE

The purpose of this news release template is to announce the funding your community is receiving to prevent youth substance use, and to encourage community members and leaders to get involved in your coalition's plans and strategies.

- Localize this template by adding a few sentences about your local data, planned strategies, prevention successes, and a quote. The DBHR director's quote must be used as is.
- Keep your final news release to one page, or as concise as possible.
- Email your news release to newspapers and TV and radio news reporters. You are more likely to get coverage if you follow up with a phone call to offer additional information.
- Please email a copy of your localized news release, and links to any news coverage, to your DBHR Prevention System Manager and to debschnellman@dshs.wa.gov.

=====

Your organization's logo

Date: *date*

Contact: *name, phone number, email*

***(Community name)* receives funding to reduce underage drinking**

(Your City)- *(Community name)* has been selected to receive *(amount of funding)* to reduce youth alcohol and other drug use, and create a healthier and safer community environment. The support includes funding for training, technical assistance, and community and school-based prevention services.

(Community name) is one of 52 communities statewide participating in a Community Prevention & Wellness Initiative (CPWI), funded by the state Department of Social and Health Services' Division of Behavioral Health and Recovery (DBHR). CPWI supports new or existing coalitions in partnering with parents, youth, educators, health professionals, law enforcement, faith leaders, and local government. Coalitions will identify their highest prevention needs, plan and implement evidence-based strategies, leverage local resources and evaluate the impact of selected programs.

"Our goal in redesigning and targeting our state prevention services is to leverage enough resources in high-need communities to achieve greater reductions in substance abuse and the harm it causes," said Chris Imhoff, DBHR's Director. "Community leaders are prepared to use these resources to help young people make healthy choices and succeed," added Imhoff.

CPWI's primary goals are to reduce underage drinking among 8th and 10th graders, improve academic performance, and reduce juvenile crime. Alcohol abuse injures and kills more young people than all other drugs combined. The 2012 Washington State Healthy Youth Survey found that prevention efforts are working to reduce teen drinking, however, more than 115,000 youth said they drank in past 30 days.

Because the teen brain is still developing, alcohol use during this time can permanently damage learning and memory, and impairs judgment and impulse control. This puts teens at greater risk for serious injuries and death.

"A number of factors were considered in selecting *(name of community)* for services", said *(county or school spokesperson)*. "These included *(list key risk factors)* as well as successes in *(provide examples)*. These factors show that *(community name)* is ready to benefit from prevention services.

The *(coalition name)* will begin planning services on *(date)*, and encourages community members to join the coalition to help plan and support programs.

State and county data from the Washington State Healthy Youth Survey is available at www.AskHYS.net. Information and tips for parents for preventing underage drinking can be found at www.StartTalkingNow.org.

For information about joining the *(coalition name)* coalition, contact *(name)*.

DBHR Community Prevention & Wellness Initiative (CPWI) Community Coalition Guide

Appendix 17: Community Profile Brochure TEMPLATE

The pictures below are for reference. A Microsoft Word template has been prepared for you and sent to Coalition Coordinator July 2014.



Appendix 18: PBPS Coalition Program Entry Instructions

For accurate and consistent community coalition reporting in PBPS, please use the following guidance:

Full Coalition Meetings

Meeting of the full membership of the designated CPWI Coalition.

Instructions

- Select 'name of coalition'
- Select 'full coalition'
- Select 'yes'
- Select appropriate answer
- Enter 'date of service'
- Select appropriate school district
- Enter the address of meeting location
- Select 'Community-Based Process'
- Select 'STC05R Community Team activities'
- Select 'SP02 Civic Groups/coalition'
- Enter session length
- Enter primary meeting topics especially those specific to accomplishing required tasks.

Leadership Committee Meetings

Meeting of the Elected officers of the Coalition. (i.e. Executive Committee, Steering committee, etc.)

Instructions

- Select 'name of coalition'
- Select 'Leadership Committee – [Name of committee]'
- Select 'yes'
- Select appropriate answer
- Enter 'date of service'
- Select appropriate school district
- Enter the address of meeting location
- Select 'Community-Based Process'
- Select 'STC05R Community Team activities'
- Select 'SP02 Civic Groups/coalition'
- Enter session length
- Enter primary meeting topics especially those specific to accomplishing required tasks.

Standing Committee Meetings

Long standing and ongoing meetings throughout the year of a group of people that have a specific focus. (i.e. Membership Committee)

Instructions

- Select 'name of coalition'
- Select 'Standing Committee – [Name of committee]'
- Select 'yes'
- Select appropriate answer
- Enter 'date of service'
- Select appropriate school district
- Enter the address of meeting location
- Select 'Community-Based Process'
- Select 'STC05R Community Team activities'
- Select 'SP02 Civic Groups/coalition'
- Enter session length
- Enter primary meeting topics especially those specific to accomplishing required tasks.

Ad-hoc Workgroup Meetings

Short-term meeting commitment of a group of people to accomplish a specific task. (i.e. Needs Assessment Workgroup)

Instructions

- Select 'name of coalition'
- Select 'Ad-hoc Workgroup – [Name of workgroup]'
- Select 'yes'
- Select appropriate answer
- Enter 'date of service'
- Select appropriate school district
- Enter the address of meeting location
- Select 'Community-Based Process'
- Select 'STC05R Community Team activities'
- Select 'SP02 Civic Groups/coalition'
- Enter session length
- Enter primary meeting topics especially those specific to accomplishing required tasks.

DBHR Community Prevention & Wellness Initiative (CPWI) Community Coalition Guide

Appendix 19: Commonly Used Prevention Resources

- Division of Behavioral Health and Recovery - DBHR (formerly DASA) websites: www.dshs.wa.gov/DBHR/
 - www.theAthenaForum.org - online resource for prevention professionals- managed by DBHR
 - www.starttalkingnow.org Washington State Reducing Underage Drinking (RUaD) website
 - CPWI training www.theathenaforum.org/training/cpwi_trainings
 - Community Coalition Orientation
 - Key Leader Event
 - Needs Assessment Clinic
 - Resources Assessment
 - For more information about programs that have shown outcomes in substance abuse prevention and mental health promotion. www.theathenaforum.org/learning_library/ebp
- The **PBPS – DBHR reporting system**: <https://waprev.kithost.net/waprevent2013/pEnter.aspx> , should be saved to your desktop or at least stored in your favorites.
- The **Healthy Youth Survey (HYS)** student survey is at www.askhys.net/ .
- **Archival data** is at dshs.wa.gov/rda/research/risk.shtm , and clicking on School District will provide a list to narrow down to community level.
 - The **Substance Abuse Professional Skills Training (SAPST)** is at www.pscbw.com/Pages/News.aspx.
- Information on how to obtain the **Certified Prevention Professional (CPP)** accreditation is at www.pscbw.com/Pages/CPApplicationProcess.aspx.
- The SAMHSA- Federal Substance Abuse and Mental Health Services Administration is at www.samhsa.gov/prevention/.
- The CSAP Principles of Effective Substance Abuse Prevention are important for program implementation and planning and are located at www.theathenaforum.org/sites/default/files/CSAP_Principles_of_SA_Prevention.pdf.
- The CADCA Primers Series is at www.cadca.org/resources/series/Primers.

DBHR Community Prevention & Wellness Initiative (CPWI) Community Coalition Guide

Community Prevention & Wellness Initiative



Community Prevention & Wellness Initiative (CPWI) is a partnership with Washington State DSHS Division of Behavioral Health and Recovery, Office of the Superintendent of Public Instruction, Local County Governments, Educational Service Districts, and Local Community Coalitions.

For more information about CPWI go to

www.theathenaforum.org/community_prevention_and_wellness_initiative_cpwi