

Coalition Leadership Institute

August 22, 2024



Washington
Thriving

Developing a strategic plan
for prenatal through age 25
behavioral health.

(Formerly known as the Strategic Plan Advisory Group)

**All Washington Thriving content in this presentation is a part of an ongoing feedback loop with the Advisory Group, discussion groups, and other communities engaged throughout the project. This presentation shares the most recent version of the project outputs and information.*

Children & Youth Behavioral Health Work Group (CYBHWG)



VISION

Each and every Washington child, youth and young adult – and their families and caregivers – are thriving.

ORIGINS

Established by legislation in 2016; recently extended through 2029.

MANDATE

To identify barriers to and opportunities for accessing behavioral health services for children and their families, and to advise the legislature on statewide behavioral health services for this population.

COMPOSITION

Approximately 40 members including young people and parents/caregivers with lived experience, legislators, agency representatives, advocates and other system actors.

- The CYBHWG has become a dynamic platform for a diverse range of stakeholders working to advance the behavioral health of children, youth, young adults, and their families and caregivers.
- Each year, five subgroups develop legislative recommendations for the CYBHWG to consider and carry forward:
 - Prenatal-Perinatal Relational Health
 - School-Based Support and Suicide Prevention
 - Youth and Young Adult Continuum of Care
 - Workforce & Rates
 - Behavioral Health Integration
- In 2022, the CYBHWG recommended the development of a statewide strategic plan for prenatal-through-age-25 behavioral health. The funding and mandate provided by the legislature has led to the process now known as [Washington Thriving](#).
- The CYBHWG is chaired by Representative Lisa Callan and Jason McGill from the Health Care Authority (HCA).

[Learn more and get involved in the CYBHWG and its subgroups](#)

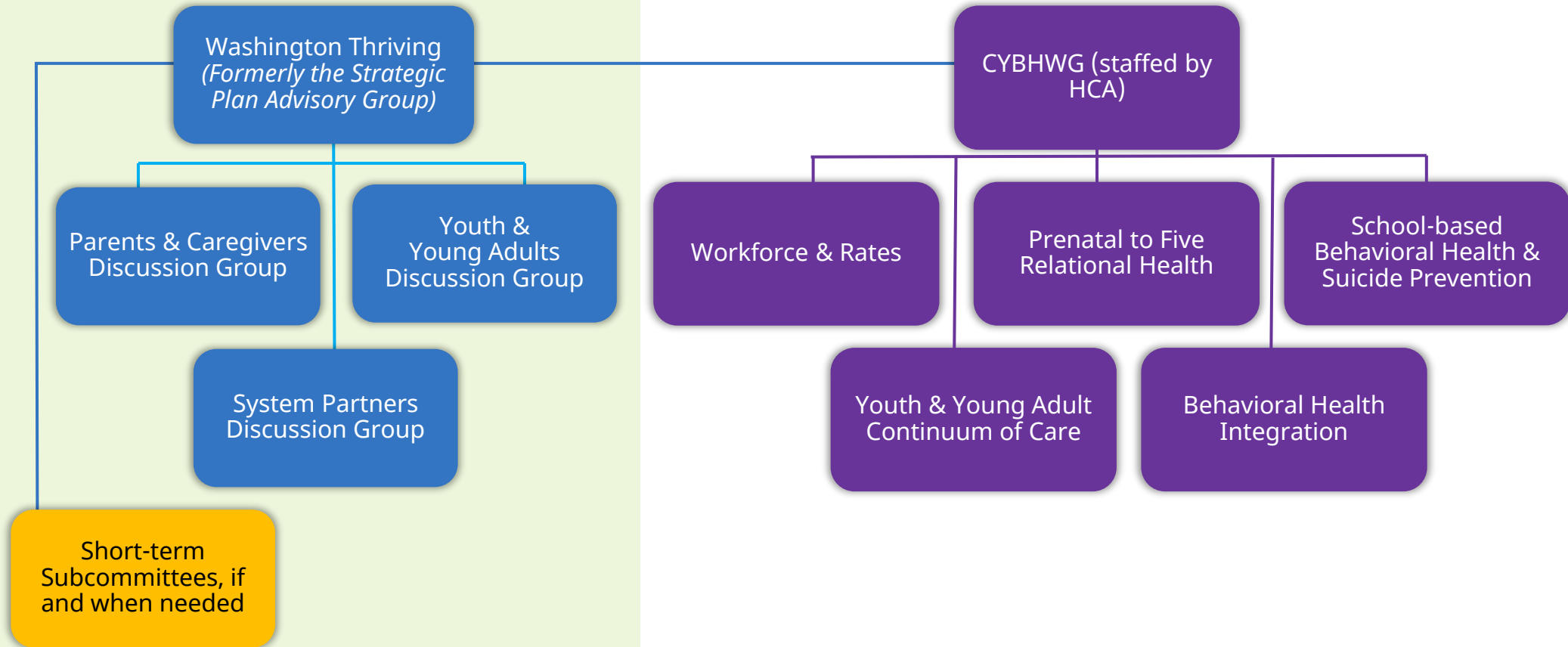
CYBHWG and Washington Thriving



Consult with:

Crisis Response Improvement Strategy (CRIS)

Joint Legislative Executive Committee on Behavioral Health (JLEC)



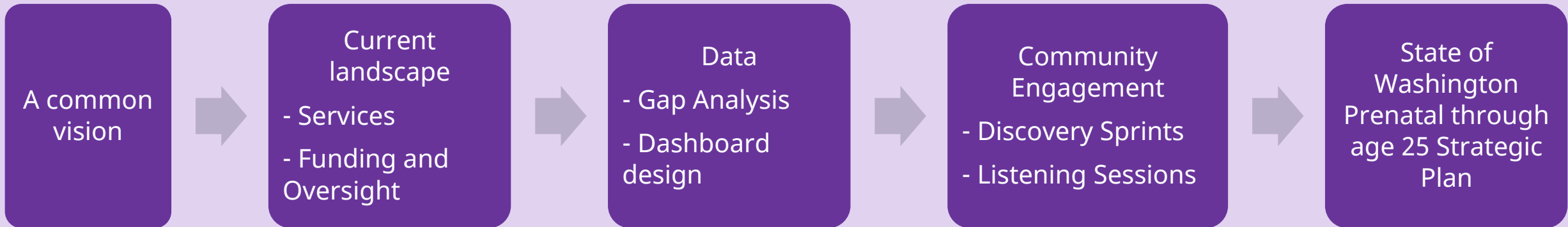
- Staff from Department of Health (DOH), Office of Superintendent of Public Instruction (OSPI), Department of Children, Youth and Families (DCYF), Department of Health and Social Services (DSHS), Office of the Insurance Commissioner (OIC), Governor's Office, Office of Homeless Youth within Department of Commerce participate in the Work Group, Subgroups and Advisory Group



CYBHWG policy achievements

Issue Area	Year	Legislation responding to CYBHWG recommendations
Strategic Plan	2022, 2024	<u>SSHB 1890, ESSB 5693 (2022): Mandates the CYBHWG to develop a statewide strategic plan for prenatal-through-age-25 (P-25) behavioral health</u> <u>ESHB 2256, ESSB 5950 (2024): Extends timeline and adds funds for development of P-25 strategic plan</u>
Infant and Early Childhood Supports	2023, 2024	<u>ESSB 5187 (2023): Provides \$1M to continue implementation of infant and early childhood mental health consultation to support tribal childcare and early learning programs</u> <u>ESSB 5187 (2023): Increases complex needs grant funds for childcare providers</u> <u>ESSB 5950 (2024): Provides \$1.75M from the general fund-federal appropriation for infant and early childhood mental health consultation (IECMH-C) and earmarks \$150k of this for rural communities</u>
Certified Community Behavioral Health Clinics	2022, 2023, 2024	<u>ESSB 5693 (2022): Provides funding to explore the development and implementation of a sustainable, alternative payment model for comprehensive community behavioral health services</u> <u>ESSB 5187 (2023): Provides funding to continue development and implementation of the CCBHC model for comprehensive behavioral health services</u> <u>ESSB 5950 (2024): Provides funding for bridge grants to federal Certified Community Behavioral Health Clinics (CCBHCs) during planning process for statewide adoption of the model</u>
School-Based Supports	2024	<u>SSB 5950: Provides funds to hire a mental health instruction implementation coordinator at OSPI</u>

Washington Thriving – from policy to practice



Ongoing input and planning with: Advisory Group, discussion groups, robust community engagement activities, and the Children and Youth Behavioral Health Work Group



Who is leading this work?

- Co-Chairs: Representative Lisa Callan and Diana Cockrell
- Children and Youth Behavioral Health Work Group
- Washington Thriving Advisory Group (*formerly known as the Strategic Plan Advisory Group*)
- Additional partners working to ensure community representation and include lived and living experience voices across the project



What is Washington Thriving?

(formerly known as the Strategic Plan Advisory Group)

- Centered on the lived and living experience of children, youth, young adults, caregivers, and families.
- Established in 2023 in response to the growing behavioral health crisis across the state
- Seeks to develop a behavioral health statewide strategic plan for Washingtonians from prenatal through age 25.
- Strategic plan to be shared with policymakers in August 2025.



What is behavioral health?

- The emotions and behaviors that affect our overall well-being, including mental health and substance use disorders, life stressors and crises, and stress-related physical symptoms.
- Includes upstream prevention and promoting well-being.

The Vision

All children and young people, as well as their caregivers and families, will be able to access high-quality, age-appropriate, culturally-attuned care when and where they look for it.

The Principles



Informed by, children, youth, caregivers and families



All doors lead to support



Offers services to meet everyone's needs



Equitable, anti-racist, and culturally and linguistically responsive



Changes in response to new information



Invests in prevention and well-being



Includes families and communities as key contributors to well-being



Opportunities

Level 1: [Join our mailing list](#)

Level 2: [Join in on discussion groups and other engagement opportunities](#)

Level 3: Invite us to an upcoming coalition meeting

Level 4: Invite us to partner with a workgroup/team within your coalition that focuses on issues across the behavioral health spectrum

We also welcome connection
to partners and colleagues!

Questions





Links and contact information

- [Children and Youth Behavioral Health Work Group Website](#)
- [Legislative report: CYBHWG 2024 Recommendations](#)
- [Legislative report: 2024 Prenatal-25 Strategic Plan Update](#)
- [Washington Thriving website](#) *(formerly the Strategic Plan Advisory Group)*
- [Upcoming Washington Thriving events](#)
- [Washington Thriving Mailing List](#)

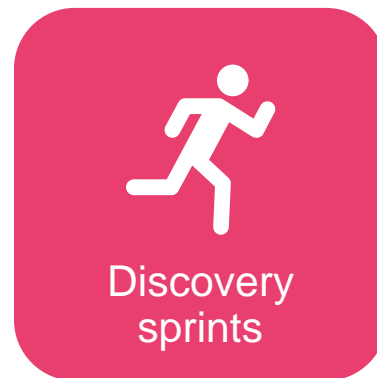
Contact:

- [Project team](#)
- [Hanna Traphagan](#)



Work stream updates

- Expanded Advisory Group launched in June
- Entering 4th month of discussion groups
- In person and virtual engagement with youth/young adults, parents/caregivers, and members of the workforce in August, September, and October
- Seeking opportunities to join events or partner with others to plan events



First two sprints wrapping up

- Support for behavioral health during pregnancy
- Connecting kids to services in schools

Preparing to launch next two sprints:

- Transitional age youth
- Discharge to community after hospitalization or crisis

Three components

1. Catalog of existing services
2. Oversight and funding of system(s)
3. Stakeholder views of current system

Sharing initial themes from landscape analysis with Advisory Group in September



Two Goals

- Understand gaps
- Develop dashboard

Completed series of scoping conversations with partner agencies to:

- Identify and categorize ideal service array
- Identify corresponding data sources