

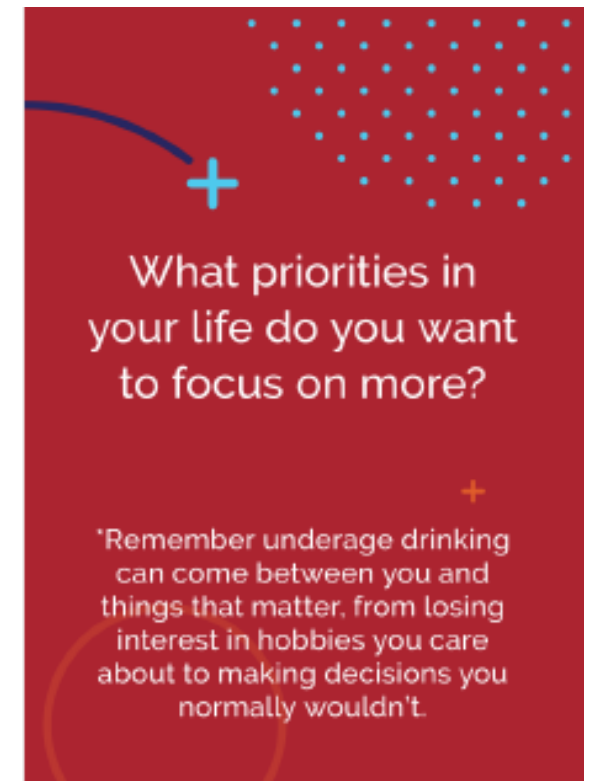
# State Prevention Enhancement (SPE) Policy Consortium

September 12, 2022

# Introductions

---

- ▶ Raise Hand
- ▶ Introduce self
  - ▶ Name, Organization
  - ▶ Icebreaker (Alicia)
- ▶ Call On Another Member
- ▶ Lower Hand



# Agenda

---

- ▶ Problem Gambling Presentation
- ▶ Recap of July SPE
- ▶ SPE 5-Year Strategic Plan
- ▶ Report Outs/Announcements
- ▶ Adjourn

# Problem Gambling Presentation

Roxane Waldron and Sandy Salivaras

# Washington Youth and Problem Gambling

---

The following question was asked in the 2021 Healthy Youth Survey (HYS):

“Gambling” means betting money or possessions either in person or online, including video poker, phone apps, e-sports, etc. In the past 12 months, has YOUR gambling ever caused you problems at home, school or with your friends?

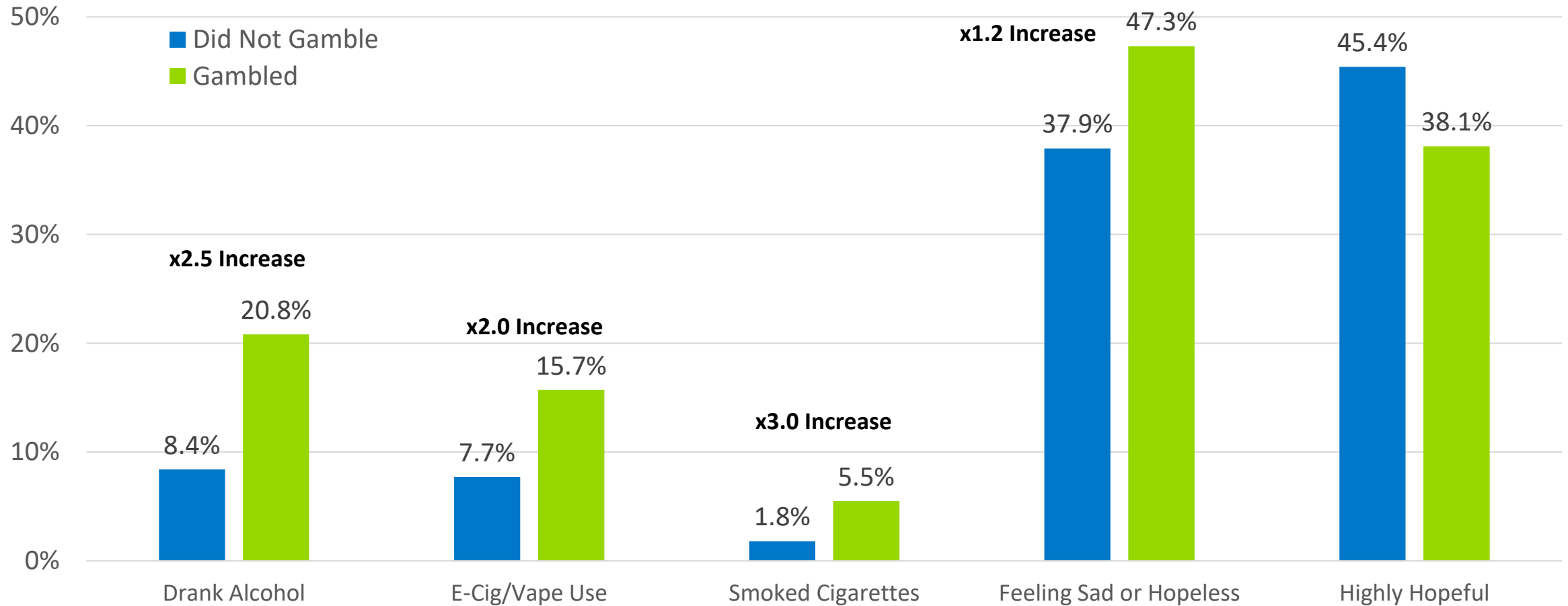
- a. No, I have not gambled.
- b. No, I have gambled but it has not caused problems.
- c. Yes, I have gambled and it has caused problems.

# What did Washington Youth tell us?

Response Frequency (8<sup>th</sup>, 10<sup>th</sup>, 12<sup>th</sup> graders, 2021 HYS)

	#	%	#	%
No, I have not gambled.	18,647	90.6%	18,647	90.6%
No, I have gambled but it has not caused problems.	1,807	8.8%	1928	9.4%
Yes, I have gambled, and it has caused problems.	121	0.6%		
Total	20,575	100%	20,575	100%

# Youth Who Gamble have Higher Rates of Substance Use and Poor Rates of Mental Health Outcomes



Washington State Healthy Youth Survey, 2021

# Questions & Feedback



# SPE Consortium 5 Year Strategic Plan

# Strategic Planning – July Recap

---

## ▶ Recap of July Meeting

- ▶ Needs Assessment for substance use and mental health
  - Impacts of covid-19 pandemic, lower use for youth
  - Focus more on young adults due to increased use, upstream prevention
  - Mental health issues did not increase from 2018
- ▶ Health Disparities/Equity
  - Increase focus on specific populations with higher risk (I.e., LGBTQ+ youth)
  - How do we describe how we are addressing health disparities and increasing equity?

# Strategic Planning – July Recap

---

## ▶ Recap of July Meeting

### ▶ Resource Assessment

#### ▶ Strengths include...

- *Information Dissemination Programs – nearly 40 of them!*
- *Broad Focus on General Substance Misuse and Mental Health Promotion*
- *Young Adults and Adolescents are most served age groups*

#### ▶ Opportunities to Expand

- *More programs which meet the needs of*
  - *Racial and ethnic minorities*
  - *LGBTQ+, all ages*
  - *People with disabilities*

# Strategic Planning – July Recap

---

## ▶ Recap of July Meeting & Follow Up

### ▶ Policy Design

- ▶ How to highlight SPE Policy recommendations more apparent in the 5-year Plan
  - Big P and little p of “policy”
- ▶ Where do we hope to be in five years
  - Examples: Funding, enforcement, decreasing access and availability to substances
    - However, organizational limitations to put in writing of plan as cabinet and non-cabinet representation in SPE
- ▶ Providing policy priorities that agencies are working to move things forward
  - Add in completed Research Briefs into Appendix
    - <https://theathenaforum.org/research-briefs-substance-use-prevention-and-mental-health-promotion>

# Current State of Strategic Plan Updates

---

## ▶ New Timeline

- ▶ Complete accomplishments and list of partners by 10/31
- ▶ Feedback on action plans sent to workgroups by 10/31
- ▶ Final provider feedback by 11/15
- ▶ Workgroups present 10-15 mins at Nov SPE (opportunity for additional feedback from consortium)
- ▶ Final edits completed by Dec 9<sup>th</sup> and sent to HCA Communications
- ▶ Communications to begin review
- ▶ Plan release date 3/9/2023

Please provide feedback on new SPE  
Strategic plan timeline

<https://www.menti.com/jzcggf66ve>

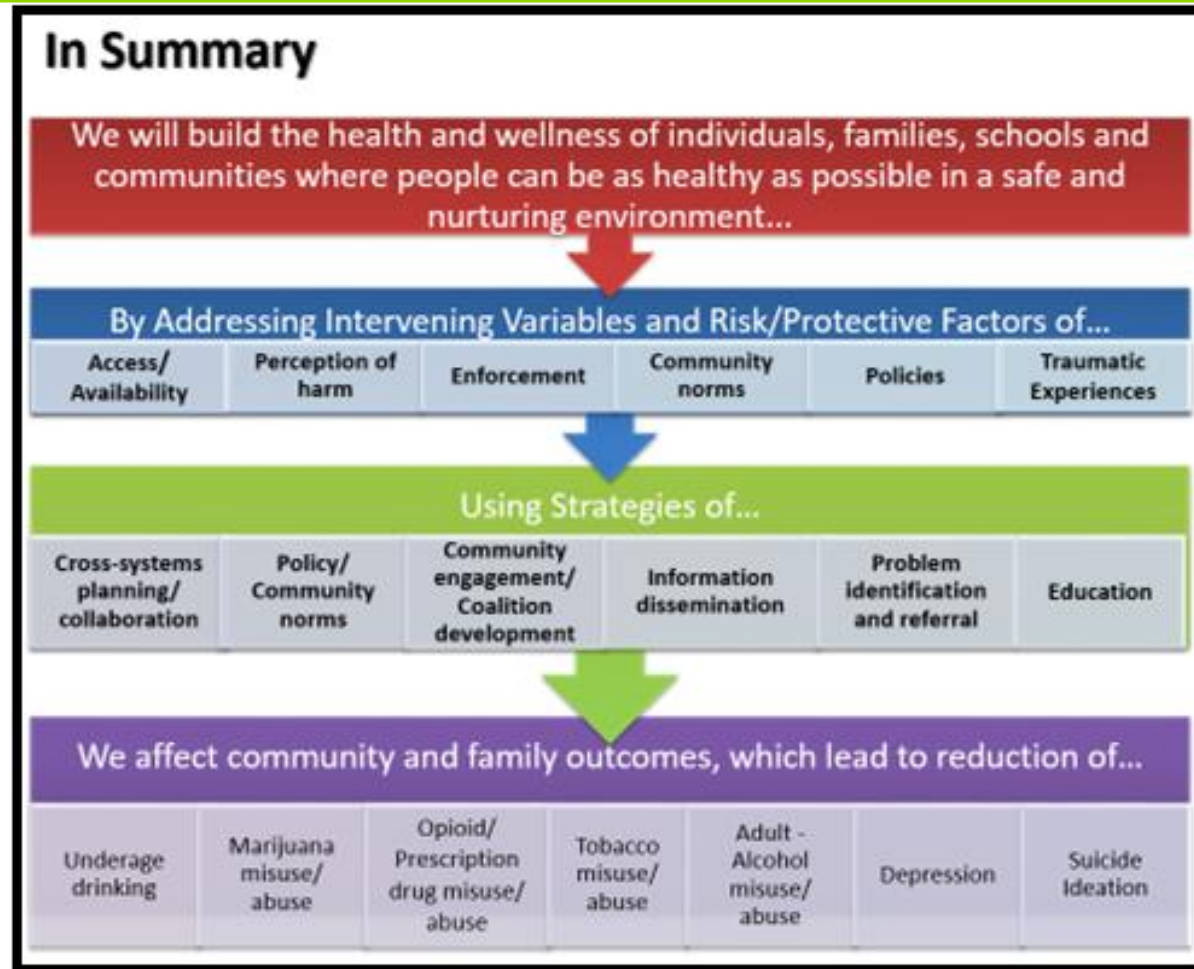
Questions 1 & 2

# 10 Min Break

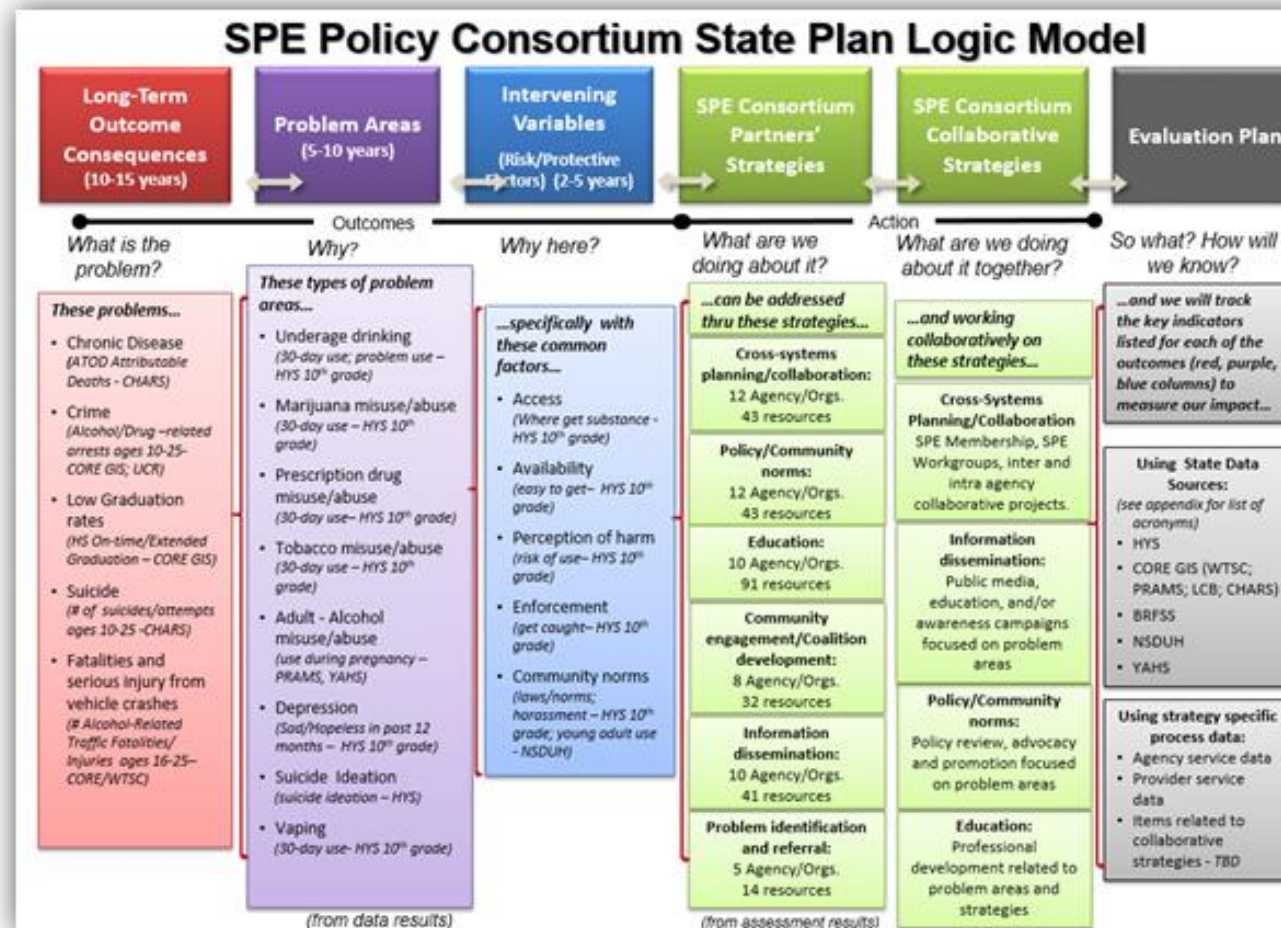
# Current State of Strategic Plan - Considerations



# SPE – Strategic Plan In Summary



# SPE Logic Model



# Needs Assessment Proposals

---

- ▶ **Background:** HYS 2021 represents a break in trends from pre-pandemic HYS data (i.e., 2018 and prior years). In addition to a change in the cohort of students being surveyed, the pandemic has influenced student behaviors and responses to the survey. Changes in trends that may have occurred without the pandemic are unable to be separated out from the many pandemic-related effects. We will better understand HYS 2021 and other pandemic-era data when we have additional data from HYS 2023 and beyond.

# Question for SPE:

---

- ▶ How do we approach setting objectives for HYS intermediate outcomes (substance use and mental health) given the break in trends from past HYS survey data? We considered three options briefly described below. Please note that each option would include the “disclaimer” language to explain the break in trends for HYS 2021, similar to what has been included in other HYS reporting.

# Option 1

---

- ▶ Keep the old HYS-based objectives for 2023 based on the last strategic plan, which were in the 5-10% range, and extend this out to 2025. This was the original approach at the July SPE meeting. We would still acknowledge HYS 2021, but we wouldn't use it for setting objectives.

# Option 2

---

- ▶ Remove the old HYS-based objectives for 2023 and create new, simple objectives based on HYS 2021 (e.g., limit the increase to below pre-pandemic levels). There was some discussion of this at SPE, and Patti mentioned that she was aware of some examples for this type of “limiting the negative” language.

# Option 3

---

- ▶ Remove the old HYS-based objectives for 2023 and postpone setting any new HYS-based objectives, and instead simply acknowledge the break in trends and that we need to wait to see what happens with HYS 2023.

# Recommendation

---

- ▶ After consulting with SEOW, we recommend that we combine **Option 1** (concrete future objectives based on pre-pandemic data) and **Option 2** (broad objectives based on pandemic data)
- ▶ Include explanatory statement that we are likely to revisit/revise these objectives in the future once we have more data/establish a new baseline



				2021 Target	2023 Target	5%	10%	Trend (APC)	HP 2030
<b>Alcohol Use (10<sup>th</sup> Grade)</b>	<b>HYS 2010</b>	<b>HYS 2018</b>	<b>HYS 2021</b>	<b>2021 Target</b>	<b>2023 Target</b>	<b>5%</b>	<b>10%</b>	<b>2010-18</b>	<b>HP 2030</b>
Drank Alcohol in Last 30 days	27.6%	18.5%	8.4%	16.0%	15.0%	17.6%	16.7%	D (4.7)	6.3%
Experimental Use of Alcohol	10.9%	8.6%	3.8%	8.0%	7.0%	8.2%	7.7%	NC	
Heavy Use of Alcohol	8.2%	5.2%	3.4%	5.0%	4.0%	4.9%	4.7%	D (5.0)	
Problem Drinking	10.4%	6.2%	3.2%	5.0%	4.5%	5.9%	5.6%	D (6.6)	
Binge Drinking in past 2 weeks	16.2%	9.6%	5.5%	7.5%	7.0%	9.1%	8.6%	D (6.4)	8.4%
<b>Young Adult Alcohol Use, past month use</b>	<b>YAHS 2014</b>	<b>YAHS 2020</b>	<b>YAHS 2021</b>	<b>2021 Target</b>	<b>2023 Target</b>	<b>5%</b>	<b>10%</b>	<b>2014-21</b>	<b>HP 2030</b>
Age 18-20 past month use	46.3%	33.5%	40.1%	40.3%	38.2%	38.1%	36.1%	NC	
Age 21-25 past month use	74.1%	70.0%	67.9%	68.5%	64.9%	64.5%	61.1%	I (1.4)	
Age 18-25 past month use	63.2%	56.3%	56.9%	58.0%	55.0%	54.1%	51.2%	I (2.2)	
<b>Pregnant Woman Alcohol Use</b>	<b>PRAMS 2012</b>	<b>PRAMS 2019</b>	<b>PRAMS 2020</b>	<b>2021 Target</b>	<b>2023 Target</b>	<b>5%</b>	<b>10%</b>	<b>2012-20</b>	<b>HP 2030</b>
Any alcohol use during last 3 months of pregnancy	12.1%	9.7%	6.6%	9.2%	8.7%	6.3	5.9	NC	
<b>Tobacco Use (10<sup>th</sup> Grade)</b>	<b>HYS 2010</b>	<b>HYS 2018</b>	<b>HYS 2021</b>	<b>2021 Target</b>	<b>2023 Target</b>	<b>5%</b>	<b>10%</b>	<b>2010-18</b>	<b>HP 2030</b>
Tobacco Use in past 30 days (all tobacco, excluding e-cigarettes) <sup>1</sup>	17.7%	7.9%	2.1%	7.7%	7.1%	7.5%	7.1%	D (9.2)	11.3%
Smoked cigarettes past 30 days	12.7%	5.0%	1.9%	4.9%	4.5%	4.8%	4.5%	D (10.7)	3.4%
<b>E-Cigarettes and/or vape products (10<sup>th</sup> Grade)</b>	<b>HYS 2010</b>	<b>HYS 2018</b>	<b>HYS 2021</b>	<b>2021 Target</b>	<b>2023 Target</b>	<b>5%</b>	<b>10%</b>	<b>2010-18</b>	<b>HP 2030</b>
E-cigarette and / or vape product use	12.7%	21.2%	7.6%	20.1%	19.1%	20.1%	19.1%	NA*	10.5%
Marijuana vaping (% of students who use marijuana who vape it)	5.1%	6.5%	3.5%	4.6%	4.3%	6.2%	5.9%	NA*	

# Example Statement:

## Drank alcohol in last 30 days (HYS Grade 10)

- ▶ Pandemic shift: 30-day alcohol use decreased from 18.5% in 2018 to 8.4% in 2021 (a ~55% decrease)
- ▶ Objective for 2023 and beyond: limit the increase or “bounce back” to below pre-pandemic levels (i.e., keep below 18.5%)
- ▶ Future HYS cycles (i.e., 2023 and 2025) will improve understanding of any changes/breaks in trends that occurred during the pandemic

# Questions & Feedback

Please provide feedback on this  
recommendation

<https://www.menti.com/jzcggf66ve>

Question 3

# Cover Design Proposals

# Option 1

2023-  
2027

Substance Use Disorder Prevention  
and Mental Health Promotion

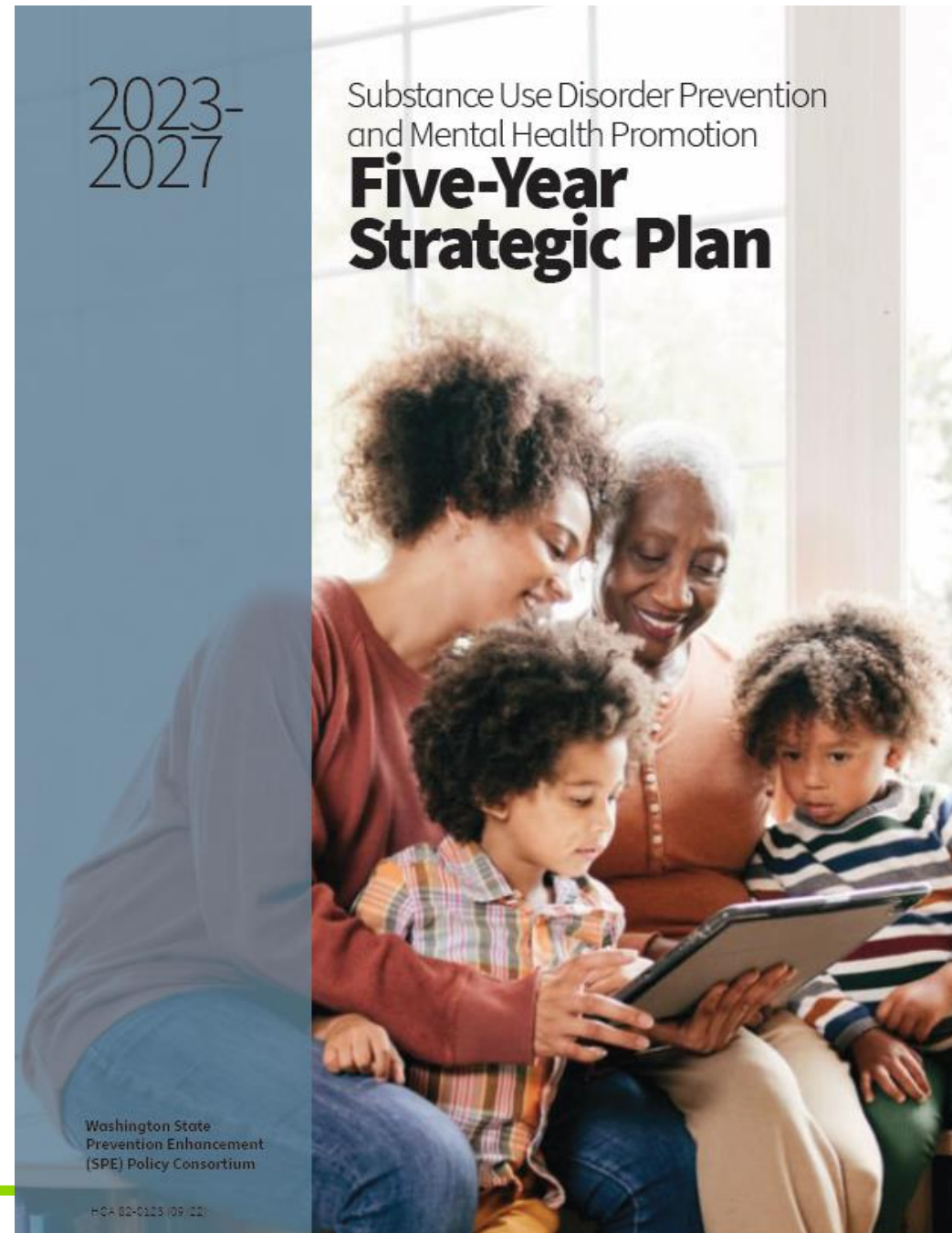
## Five-Year Strategic Plan



Washington State  
Prevention Enhancement  
(SPE) Policy Consortium

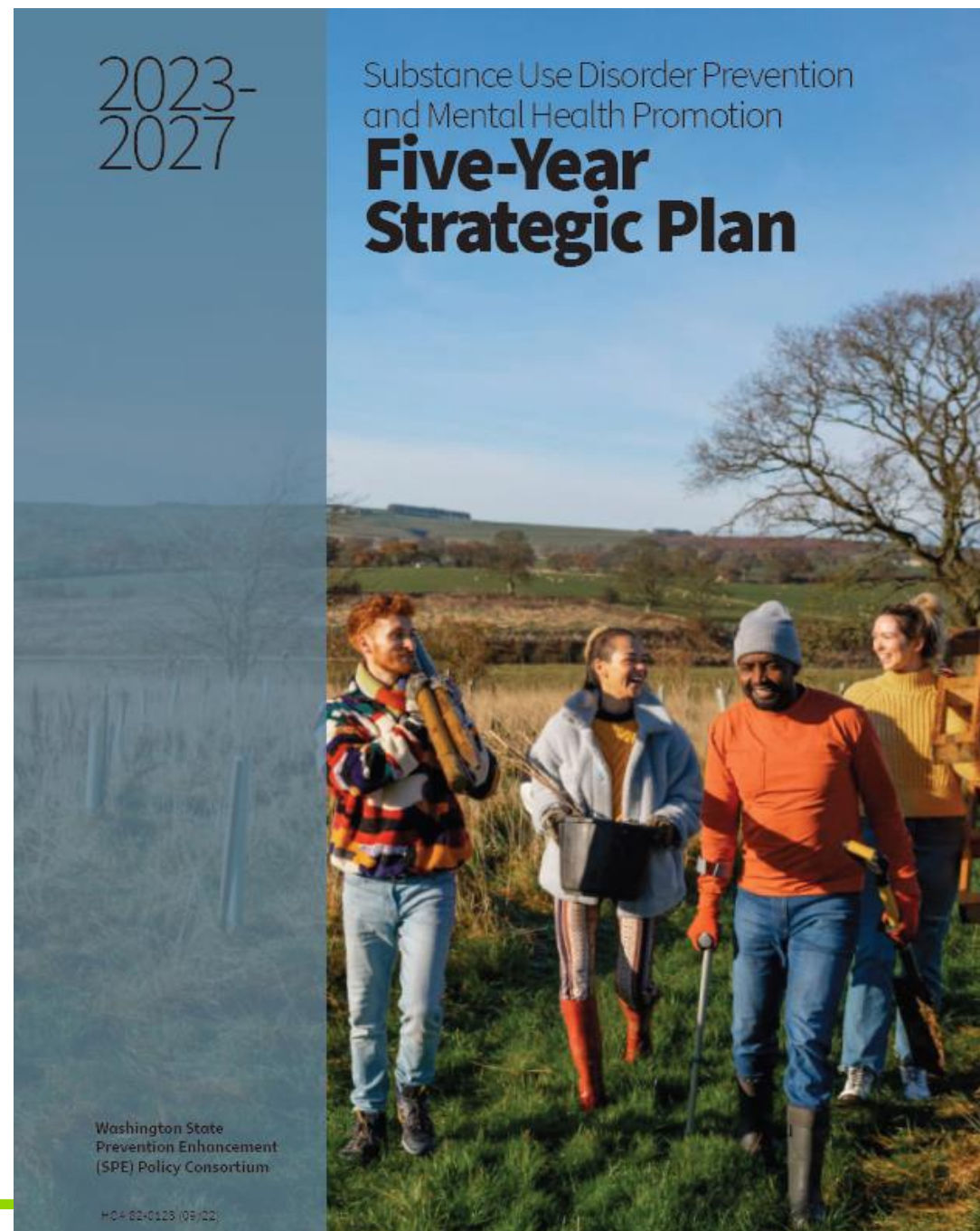
HCA 82-0123 (09/22)

# Option 2



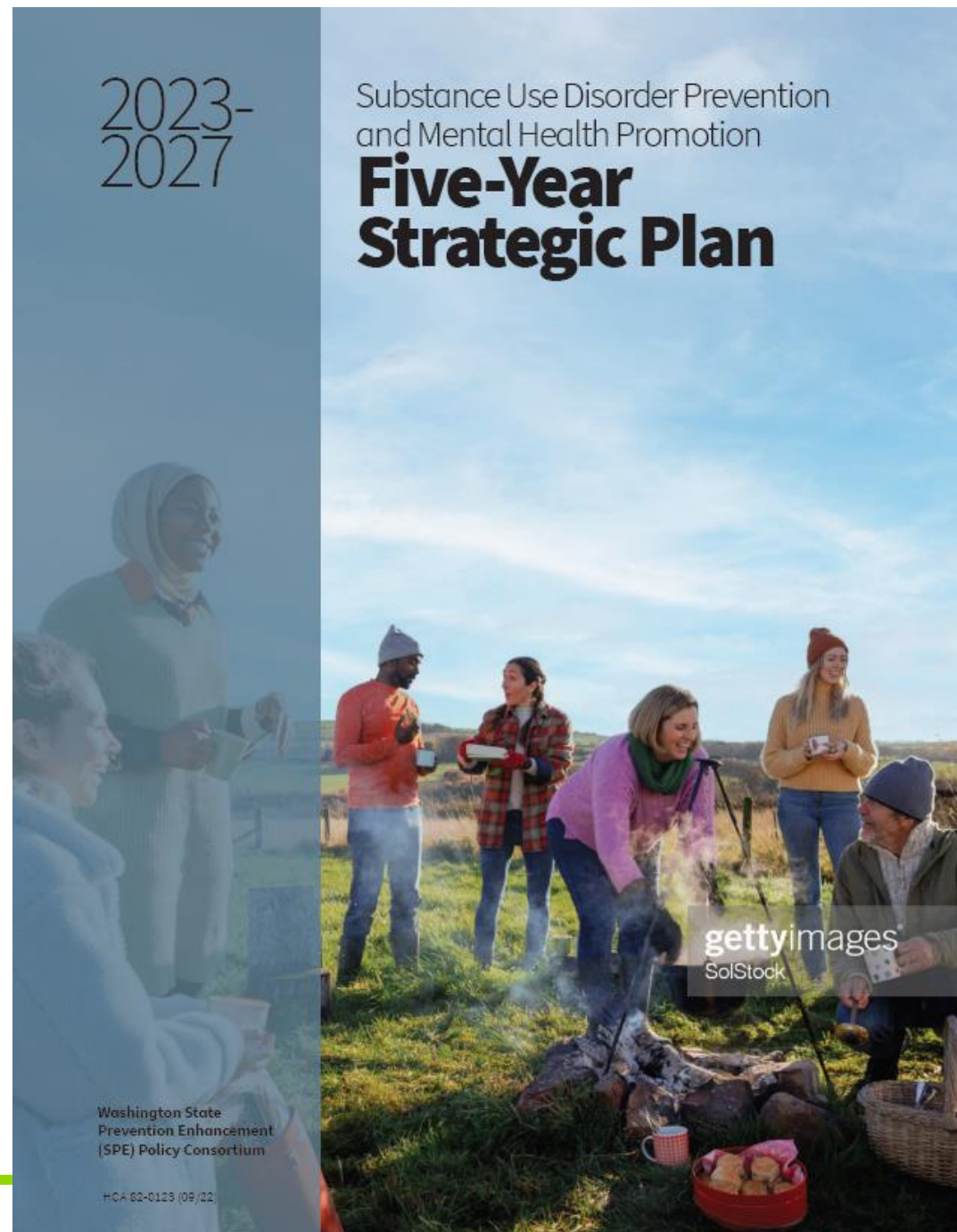


# Option 3





# Option 4



# Option 5



# Questions & Feedback

# Please rank the cover designs

<https://www.menti.com/jzcggf66ve>

## Question 4

# SPE – Announcements

---

- ▶ Community/Provider feedback that need SPE to present to:
  - ▶ Provider Meeting
  - ▶ Other venues?
- ▶ Agency reps that need to attend weekly (Wed) legislative meetings
- ▶ Workgroup Updates (round robin)
- ▶ Other Announcements?

Do you have an event/meeting  
where SPE should present the 5-Year  
Strategic Plan update?

<https://www.menti.com/jzcggf66ve>

Question 5

# Thank You!

If you have feedback or questions please email Isaac,  
Erika, and Alicia

[Isaac.Wulff@hca.wa.gov](mailto:Isaac.Wulff@hca.wa.gov), [Erika.Jenkins@hca.wa.gov](mailto:Erika.Jenkins@hca.wa.gov),  
[Alicia.Hughes@hca.wa.gov](mailto:Alicia.Hughes@hca.wa.gov)

## **Next meeting:**

November 14<sup>th</sup>, 1-4 p.m.

**\*\*Final Plan Reviews!**