

Welcome to the 2024 Coalition Leadership Institute, Day 2

SUD Prevention and MH Promotion Section
Division of Behavioral Health and Recovery
Washington Health Care Authority



Day 2 Agenda

- ▶ **DBHR State Prevention System Updates**
- ▶ **Engaging the Field: Review and Discuss Community Survey Questions**
- ▶ **Budget-Friendly Ideas: *Friends for Life* Campaign in Your Community**
- ▶ **Lunch (Activity: *Owl That You Want*)**
- ▶ **Data Driven Stories: A Needs Assessment Example from South Whidbey**
- ▶ **Washington Thriving: The Children's Behavioral Health Workgroup – Prevention Representation in the Continuum**
- ▶ **Closing Remarks**

Opening Remarks

Codie Garza

Development and Strategic Initiatives Supervisor

Welcome to Day 2

- ▶ **Good morning**, and welcome!
- ▶ Kudos to the **Advisory Workgroup**.
- ▶ Thank you to everyone involved in **CPWI and CBO Site Visits**.
- ▶ Great work on the **Minerva** Quality Control!
- ▶ State Prevention Enhancement (SPE) Consortium **Needs Assessment** update underway.
- ▶ **Healthy Youth Survey (HYS)** 2025 update.
- ▶ Awaiting notification of **State Opioid Response (SOR) IV**.
- ▶ Second year of **Partnerships for Success (PFS)** starting!
- ▶ **Block Grant** reporting starting soon.
- ▶ **Workforce development** highlights & the *Start Your Path* campaign.

THANK YOU!

Find which career fits your interests! [Take our quiz](#)

Washington needs behavioral health professionals more than ever.

- Mental Health Promotion and Substance Use Disorder Prevention
- Substance Use Disorder and Mental Health Treatment
- Recovery Support

Statewide Updates

Sonja Pipek

Tribal and CBO Services Supervisor

Statewide Updates

- ▶ Hello!
- ▶ Visit to **North Star Quarterly Partner Gathering** to discuss Tribal prevention services.
- ▶ Updated Lists on **Excellence in Prevention (EIP) Registry** to include Health Equity Consultations.
- ▶ **National Prevention Network (NPN)** presentation.
- ▶ Upcoming **988 Day**, get involved!
- ▶ Amazing **young adult** efforts translating materials into Spanish.
- ▶ Extending SOR III **Community-Based Organization (CBO) Contracts** for an additional 9 months.
- ▶ Preparing for the next **legislative session**.

Statewide Updates

Kasey Kates

CPWI and School-Based Services Supervisor

Statewide Updates

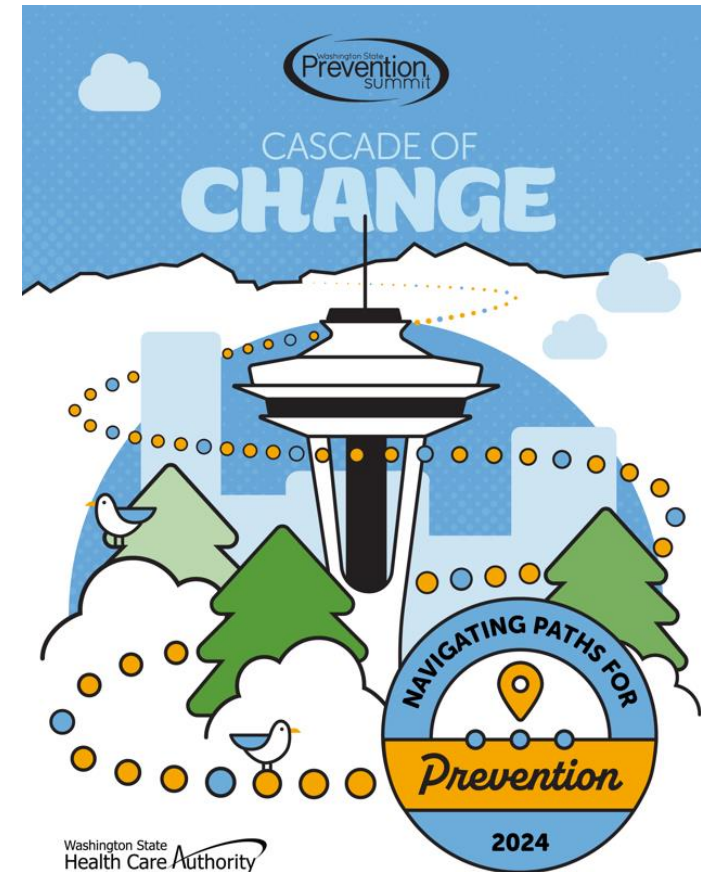
- ▶ Hi!
- ▶ Congrats on submitting **SFY 2025 Action Plans / Budgets and Service and Staffing Plans.**
- ▶ See you at the **Annual Contractor Training** on September 11, 2024.

Note: This is a draft agenda.

Time	Agenda
9:00 a.m.	Login
9:05-9:15 a.m.	Welcome & Introductions
9:15-9:45 a.m.	Overview of Funding Sources
9:45-10:15 a.m.	Overview of Umbrella Contract
10:15-10:30 a.m.	Break
10:30-11:00 a.m.	Overview of Invoicing/Billing
11:00-12:00 p.m.	Statewide Updates

Statewide Updates

- ▶ Get ready for the **2024 Annual Prevention Summit!** *Registration and scholarships available now*
- ▶ **CPWI Budget** updates:
 - ▶ New state funds to support stabilization - \$1.5 million starting January 1, 2025, then raises to \$3 million starting SFY 2026
 - ▶ ARPA ends September 29, 2025



CPWI Strategic Planning

Kasey Kates

CPWI and School-Based Services Supervisor

Strategic Planning: The Plan



Winter - Spring '24	Summer '24	Fall '24	Winter '25
<ul style="list-style-type: none">• HYS data available• Training begins• Early building capacity & planning efforts with coalition	<ul style="list-style-type: none">• CPWI Data Books available• <i>Action Plans and Budgets updated for SFY 2025!</i>• Coalition Leadership Institute with emphasis on assessment• CPWI Documents finalized	<ul style="list-style-type: none">• Early sections may be submitted for review• Focused writing of Plan• Planning continues until December	<ul style="list-style-type: none">• Full plan submitted to manager for review• Edits complete and Plan approved by early calendar year '25

Strategic Planning: Training Plan

Implementation:		
<p>Effective Program Implementation</p> <p><i>*Required unless Coordinator with more than 2 years of experience with CPWI and has demonstrated successful completion of a Strategic Plan through CPWI. Must have written approval from contract manager.</i></p> <p><i>Upon completion of the training, participants will be proficient in documenting the tasks essential for ensuring successful implementation, adept at delivering high-quality implementation to meet fidelity standards for evidence-based and innovative programs/strategies, skilled in adapting EBPs, knowledgeable about potential implementation pitfalls and strategies to navigate them, and equipped with the know-how to hire, train, and/or subcontract for a facilitator.</i></p>	<p>October 8th 10:00 – 2:00 PM</p>	<p>Virtual; registration to be posted via The Athena Forum.</p>
Reporting and Evaluation:		
<p>Reporting and Evaluation</p> <p><i>*Required unless Coordinator with more than 2 years of experience with CPWI and has demonstrated successful completion of a Strategic Plan through CPWI. Must have written approval from contract manager.</i></p> <p><i>This training covers the development of an evaluation plan. Training may include information on measurement of programs/practices/strategies, importance of measuring effectiveness, how evaluations inform strategic plan revisions or course corrections.</i></p>	<p>October 29th 1:00 – 5:00 PM</p>	<p>In-person as part of the Prevention Summit.</p>



Strategic Planning: Office Hours

During the 8/6 session we talked about strategies to lead the Coalition through the Needs Assessment process including prioritization of risk / protective factors!



University of Washinton Social Development Research Group (SDRG) Office Hours		
<p>Join the Community Prevention Strategists from UW SDRG during open virtual office hours, designed to support your CPWI strategic planning process. This is an opportunity to ask questions, seek guidance, and receive personalized support on your community prevention work. Whether you need clarification on specific steps or advice on best practices, our experts are here to assist you in enhancing your strategic planning efforts. Office hours will be available from August 2024 – September 2025.</p>	August 1 st	Virtual; registration to be posted via The Athena Forum .
	2:00 – 4:00 PM	
	August 6 th	
	9:00 – 11:00 AM	
	1 st Thursdays:	
	2:00 – 4:00 PM	
	3 rd Tuesdays	
	9:00 – 11:00 AM	

Strategic Planning: Intensive TA



- ▶ Opportunity to have additional **one-on-one technical assistance** directly from SDRG.
- ▶ **Referral required** from prevention manager.
- ▶ Reminder, SDRG and WSU are experts in the **why and how** to complete the planning process.
 - ▶ For example, have questions about how to support the Coalition in making decisions about program selection? This is perfect for them!
- ▶ DBHR responsible for training to any **DBHR provided documents** (i.e. Template, CPWI Guide), CPWI policy, or other requirements.
 - ▶ For example, have questions about how to use the Template? This is perfect for your manager!
- ▶ Process and timeline **TBD!**
 - ▶ This information will be shared via email / Athena newsletter.

Strategic Planning: What Comes Next?

- ▶ Finalizing Strategic Planning page on **Athena** to provide a one-stop shop for all resources!
 - ▶ Estimate to be complete in the coming weeks.
- ▶ Finalizing the updated **Resource Guide** to provide additional step-by-step instructions to aid you in completing and writing you Plan.
 - ▶ Estimate to be complete in the coming weeks building off of / incorporating what has been shared in the trainings thus far, however, please continue to use the most recent version in the interim.
 - ▶ Note: Name is subject to change!
- ▶ Finalizing “the **Checklist / Scoring Rubric**” that will inform the review and approval of your Strategic Plan.
 - ▶ Estimated to be completed by October 2025.
- ▶ Updating the **CPWI Guide**.
 - ▶ Estimated to be completed by early 2025 however please continue to use the most recent version in the interim.

Strategic Planning: What Comes Next?

► Finalizing **due dates!**

- ▶ Plan anticipated to be reviewed **in FULL** by prevention manager however can use Office Hours or Intensive TA to discuss topics from Template or use check-ins with manager to review draft sections.
 - Why? These Plans are for you and your community! Each community will navigate this process differently and on different timelines. We've sought to be cleared about minimum expectations without having drafts shuffled back-and-forth for months! We also hope that by providing additional training/technical assistance this may reduce the need for edits.
- ▶ **Initial draft** anticipated to be due to prevention manager in December/January of 2025 with one formal round of proposed edits.
- ▶ **Final draft** anticipated to be due to prevention manager by mid-February of 2025.
- ▶ Plans anticipated to be **reviewed by managers** (and CPWI Lead as needed) by April of 2025.
- ▶ **Contract negotiations** for next biennium to occur **around April of 2025.**
 - Anticipate some language changes related to Action Plans as this information is fully contained with the Plan itself.
- ▶ **Minerva** program editing/building to occur after Plans approved starting around May/June of 2025.
- ▶ Plans **posted to Athena** by June/July of 2025.

Strategic Planning: Looking Ahead!



- ▶ Plans **updated as needed** throughout the biennium (SFY 2026 & SFY 2027).
 - ▶ Your prevention manager MAY require an update if substantial information has changed.
 - ▶ Updating throughout the years will save you time down the road too!
 - ▶ Budgets retain the ability to have changes up to 10% with no required update.
- ▶ Healthy Youth Survey (HYS) implemented in **fall of 2025** and **new data available in early 2026**.
- ▶ Strategic Planning cycle begins again in late winter/early spring of 2026 through the end of the year with Plans formally due again in **late winter/early spring of 2027**.

Strategic Planning: Looking Ahead!



▶ Goals:

- ▶ Continue to **gather feedback**! While strategic planning itself is not new, the process and documents we are using are different and we will continue to re-evaluate.
- ▶ Communicate and **schedule in advanced** as possible! We know calendars are tough and as we get into this new groove, we are confident we can plan even further ahead.
- ▶ Increase **stability and service delivery**! Let's continue the great work for many more years to come.

Strategic Planning: The Template



- ▶ Key changes:
 - ▶ **Simplification** through word choice, format, and clarity of prompts however please note, this is still a technical document.
 - ▶ Emphasis on **health equity and sustainability**.
 - ▶ **Reducing redundancy** wherever possible to include trying to shorten length of document.
 - ▶ Building in more opportunities to highlight **collaborative efforts of CPWI** including as a two-pronged approach between the community and school-based efforts.
 - ▶ Removal of separate **Action Plan**.
 - ▶ **Two-year** Plan!
- ▶ An updated Logic Model and Budget document are under draft to be provided in coming weeks.
 - ▶ *Note: Some parts are influenced by funding awards / budget information that will be made available later this summer/early fall.*

Everyone Have a Template?

▶ Okay! Here we go...

- ▶ *NOTE: Paper copies of the CPWI Strategic Plan Template were distributed and discussed at CLI 2024. A Word version of the template should be available on the Athena Forum by early September 2024.*

Strategic Planning: In Closing...

- ▶ We expect that the Coalition is or should be starting to **dive into the Assessment process** heavily from now through October 2025 to include starting to draft previous portions of the Plan.
- ▶ In October and November, we'd anticipate the Coalition is working through the **Planning and Implementation phases** to include documenting in the Plan.
- ▶ In November through December, we'd anticipate the Coalition is working through **Reporting and Evaluation**.
- ▶ In December/January, we'd anticipate the Coalition putting the **final touches on the initial draft** for review.
- ▶ In January/February, final edits should be done, and **final draft** send to HCA for review.

Take a *Wellness* Break

See you in **15 minutes**



CPWI Community Survey - Listening Session

- ▶ Seeking feedback on the Community Survey, which is used to assess adult attitudes towards youth substance use and related issues.
- ▶ Led by DBHR Data and Evaluation Manger, **Sandy Salivaras** and DBHR Fellow, **Leah Marcotte**
- ▶ See additional presentation resources in 2024 CLI for details or reach out to DBHR for a copy of the presentation.

Admin Initials: _____ #: _____ Date: _____

These first questions ask about your perceptions of substance abuse and mental health concerns in your community.

1. How much of a problem do you think each of the following is among youth (6th-12th grade) in your community?

	Not a problem	A minor problem	A moderate problem	A serious problem	Don't know
Alcohol Use	<input type="radio"/>	<input type="radio"/>	<input type="radio"/>	<input type="radio"/>	<input type="radio"/>
Cannabis use	<input type="radio"/>	<input type="radio"/>	<input type="radio"/>	<input type="radio"/>	<input type="radio"/>
Prescription drug misuse (using medication without a prescription or in a way other than prescribed)	<input type="radio"/>	<input type="radio"/>	<input type="radio"/>	<input type="radio"/>	<input type="radio"/>
Other drugs (specify below*)	<input type="radio"/>	<input type="radio"/>	<input type="radio"/>	<input type="radio"/>	<input type="radio"/>
Tobacco use	<input type="radio"/>	<input type="radio"/>	<input type="radio"/>	<input type="radio"/>	<input type="radio"/>
E-cigarettes or other electronic vapor products	<input type="radio"/>	<input type="radio"/>	<input type="radio"/>	<input type="radio"/>	<input type="radio"/>
Driving under the influence of alcohol	<input type="radio"/>	<input type="radio"/>	<input type="radio"/>	<input type="radio"/>	<input type="radio"/>
Depression	<input type="radio"/>	<input type="radio"/>	<input type="radio"/>	<input type="radio"/>	<input type="radio"/>
Suicide	<input type="radio"/>	<input type="radio"/>	<input type="radio"/>	<input type="radio"/>	<input type="radio"/>
Bullying	<input type="radio"/>	<input type="radio"/>	<input type="radio"/>	<input type="radio"/>	<input type="radio"/>
Bullying on social media	<input type="radio"/>	<input type="radio"/>	<input type="radio"/>	<input type="radio"/>	<input type="radio"/>

*If you marked "Other Drugs" above, which drugs?

2. How much do you think people risk harming themselves when they drive...

	No risk	Slight risk	Moderate risk	High risk	Don't know
Under the influence of alcohol	<input type="radio"/>	<input type="radio"/>	<input type="radio"/>	<input type="radio"/>	<input type="radio"/>
Under the influence of cannabis	<input type="radio"/>	<input type="radio"/>	<input type="radio"/>	<input type="radio"/>	<input type="radio"/>

3a. If youth wanted to get some alcohol, how easy would it be for them to get some?

	Very easy	Sort of easy	Sort of hard	Very hard	Don't know
Middle School youth (6 th -8 th grade)	<input type="radio"/>	<input type="radio"/>	<input type="radio"/>	<input type="radio"/>	<input type="radio"/>
High School youth (9 th -12 th grade)	<input type="radio"/>	<input type="radio"/>	<input type="radio"/>	<input type="radio"/>	<input type="radio"/>

3b. If youth wanted to get some cannabis, how easy would it be for them to get some?

	Very easy	Sort of easy	Sort of hard	Very hard	Don't know
Middle School youth (6 th -8 th grade)	<input type="radio"/>	<input type="radio"/>	<input type="radio"/>	<input type="radio"/>	<input type="radio"/>
High School youth (9 th -12 th grade)	<input type="radio"/>	<input type="radio"/>	<input type="radio"/>	<input type="radio"/>	<input type="radio"/>

Friends for Life – Campaign Ideas for CPWI

- ▶ “Budget Friendly Ways to Use the **Friends for Life** Campaign in Your Community”
- ▶ Led by **Stacie Jones** from DH, and **Melissa Thoemke** from HCA/COMS
- ▶ See additional presentation resources in 2024 CLI for details or reach out to DBHR for a copy of the presentation.



Lunch

See you back at 1 p.m.



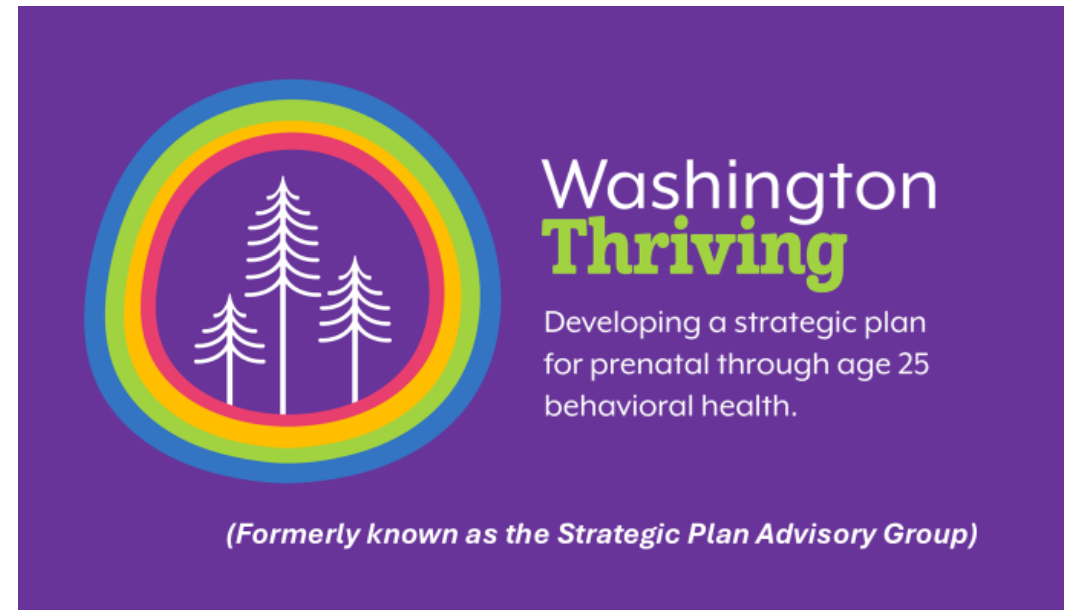
Data Driven Stories – A CPWI Needs Assessment Example from South Whidbey Island

- ▶ Community and coalition context, development process, and initial findings.
- ▶ Led by **Lauri Johnson**, South Whidbey CARES coordinator, and **Taylor Lawson**, Island County Public Health
- ▶ See additional presentation resources in 2024 CLI for details or reach out to DBHR for a copy of the presentation.



Washington Thrives – P/25 Section Plan

- ▶ Seeking feedback and engagement on the state strategic plan for improving youth behavioral health.
- ▶ Led by P-25 Strategic Plan Program Manager - **Hanna Traphagen**
- ▶ See additional presentation resources in 2024 CLI for details or reach out to DBHR for a copy of the presentation.



Closing Remarks

Codie Garza - Strategic Initiatives and Development Supervisor

- Reminder: Fill out evaluation link sent by email to receive certificate.
- Follow up with DBHR manager with any lingering questions.
- Thank you for your engagement and support!

