

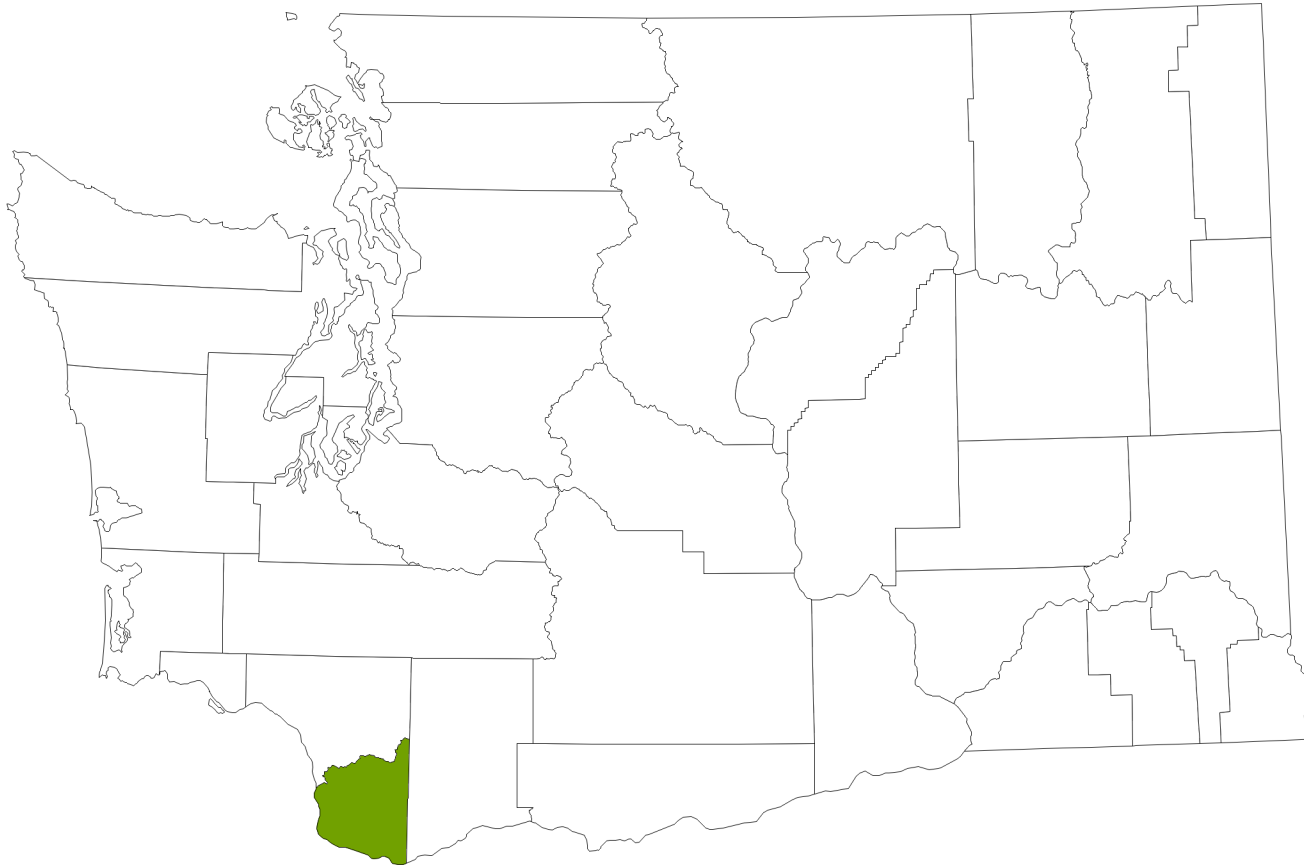
# 2023 Community Risk Profile Summary

## Clark County

March 2023

### Indicators associated with substance use prevention and mental health promotion.

Presented at the State, County, and School District level for use by communities in directing their resources and in seeking additional funding.



### CONTRIBUTORS

DSHS Research and Data Analysis Division: Aaron Starks, MA | Grace Hong, PhD | Irina Sharkova, PhD | Stephen Leibenguth

In collaboration with the HCA Division of Behavioral Health and Recovery, Substance Use Disorder Prevention and Mental Health Promotion Section:

Kasey Kates, MSW, Policy and Program Supervisor | Sandy Salivaras, MSc, MPH, Epidemiological Prevention Research and Evaluation Manager | Sarah Mariani, CPP, Section Manager

## **ABOUT THIS REPORT**

This summary report has been developed for the Community Prevention and Wellness Initiative (CPWI) to assist coalitions in their prevention strategic planning. We have included data from your county, presented by school district, for the assessment of problems associated with substance use. This report is intended to serve as a starting point for your planning and assessment work. Additional data that can only be collected locally will help with the interpretation of the data and in other ways enhance this assessment process.

The Community Prevention and Wellness Initiative is a project of the Health Care Authority's Division of Behavioral Health and Recovery (DBHR) in collaboration with the Office of the Superintendent of Schools (OSPI). The Department of Social and Health Services' Division of Research and Data Analysis is a key partner that leads the publication of this report and the associated data.

## **ABOUT THE DATA**

The CORE contains archival indicators (or social indicators) that are highly correlated with adolescent substance use, and the risk factors that predict substance use. There are currently 47 indicators, most of which originate from the Department of Health, Department of Social and Health Services, Uniform Crime Report/National Incident-Based Reporting System, and the Office of the Superintendent of Public Instruction. The data are published twice a year on a public website, and reported at the lowest feasible geography level: state, county, school district/community, and locale (a geography that incorporates more than one school district when the base population of the school district is too low for reliable reporting). See <https://www.dshs.wa.gov/ffa/research-and-data-analysis/community-risk-profiles>.

The Risk Rankings table(s) and maps have been developed using the data from CORE and Healthy Youth Survey (HYS). School district-level and more detailed HYS data are password protected and require a data sharing agreement with the Department of Health. State and county reports are available to the public at AskHYS.net.

**ATTENTION! HYS 2021 is different** from past surveys in several ways, so caution should be used when comparing HYS 2021 results to prior survey years/trends:

- The pandemic has likely influenced student behaviors and responses to the survey;
- There was a three-year gap (2018 to 2021) instead of the usual two-year gap - delaying the survey by a year changed the group/cohort of students being surveyed;
- This was the first time the survey was administered electronically; ~2% of students took a paper-and-pencil survey, and ~2% of students took the survey remotely (not on school property)
- Future HYS cycles will tell us more about which changes or trends will continue and which were unique to 2021.

## **FOR MORE INFORMATION**

Questions about this report or the Community Prevention and Wellness Initiative may be directed to the DBHR Training team at [PxTraining@hca.wa.gov](mailto:PxTraining@hca.wa.gov).

CLARK COUNTY		RISK RANKING		RISK CATEGORY RANK		CONTEXTUAL INDICATORS	
School District	Population: Age 10-17*	Rank for Variable	Indicators with Data	ATMO Consumption	Consequence	Economic Deprivation	Troubled Family
Battle Ground	10,083	70	22	Average	High	Low	Low
Camas	4,484	5	22	Very Low	Very Low	Very Low	Very Low
Evergreen (Clark)	17,651	58	22	Average	Average	Average	Average
Hockinson	1,492	80	22	Very High	Low	Very Low	Very Low
La Center	1,123	28	22	Average	Low	Low	Low
Ridgefield	2,127	71	22	Average	Average	Very Low	Low
Washougal	2,345	68	22	Average	Average	Average	Average

**NOTES:**

\* This is a 5-year average value.

**This risk profile reflects the risk levels of this county as of March 2023. School districts with no high schools are not included in this summary. Please note risk levels and risk rankings may change over time.**

The ATMO consumption risk score is calculated from prevalence of alcohol, tobacco, marijuana, and prescription opioids use. The consequence risk score is calculated from school performance, youth delinquency, and mental health indicators. The overall risk ranking is not computed if either consumption or consequence score is missing.

A Risk Category Rank of "Very High" indicates the referenced School District Risk Score was in the top 10% of School Districts in the risk category.

A Risk Category Rank of "High" indicates the referenced School District Risk Score was in the top 25% of School Districts in the risk category.

A Risk Category Rank of "Average" indicates the referenced School District Risk Score was between 25% and 75% of School Districts in the risk category.

A Risk Category Rank of "Low" indicates the referenced School District Risk Score was in the bottom 25% of School Districts in the risk category.

A Risk Category Rank of "Very Low" indicates the referenced School District Risk Score was in the bottom 10% of School Districts in the risk category.

**Review Considerations**

1) To get an overall sense of risk severity for both consumption and consequence, examine the "Risk Percentile". It reflects what % of School District had a Risk Score LOWER than the referenced School District.

2) To ensure that the risk score is meaningful, examine the "Indicators with data" column. Risk scores based on few indicators should be interpreted with caution. In total, 21 indicators were used.

3) To consider other contextual information, examine the "Population: Age 10-17", "economic deprivation" indicator, and the "troubled family" indicator. Note the "Population 10-17 year olds" value may be greater than district enrollment as it accounts for kids not in school as well as those in private schools.

**ATTENTION! HYS 2021 is different** from past surveys in several ways, so caution should be used when comparing HYS 2021 results to prior survey years/trends:

- The pandemic has likely influenced student behaviors and responses to the survey;
- There was a three-year gap (2018 to 2021) instead of the usual two-year gap - delaying the survey by a year changed the group/cohort of students being surveyed;
- This was the first time the survey was administered electronically; ~2% of students took a paper-and-pencil survey, and ~2% of students took the survey remotely (not on school property)
- Future HYS cycles will tell us more about which changes or trends will continue and which were unique to 2021.

VANCOUVER PUBLIC SCHOOLS		RISK RANKING		RISK CATEGORY RANK		CONTEXTUAL INDICATORS	
School District	Population: Age 10-17*	Rank for Variable	Indicators with Data	ATMO Consumption	Consequence	Economic Deprivation	Troubled Family
Columbia River HS	3,035	48	22	Average	Average	Average	No Data
Fort Vancouver HS	7,287	87	22	High	High	Very High	Average
Hudson's Bay HS	6,028	70	22	High	Average	High	High
Skyview HS	7,739	10	22	Low	Low	Average	Low

**NOTES:**

\* This is a 5-year average value.

**This risk profile reflects the risk levels of this county as of MArch 2023. Please note risk levels and risk rankings may change over time.**

The ATMO consumption risk score is calculated from prevalence of alcohol, tobacco, marijuana, and prescription opioids use. The consequence risk score is calculated from school performance, youth delinquency, and mental health indicators. The overall risk ranking is not computed if either consumption or consequence score is missing.

A Risk Category Rank of "Very High" indicates the referenced High School Risk Score was in the top 10% of High Schools in the risk Category.

A Risk Category Rank of "High" indicates the referenced High School Risk Score was in the top 25% of High Schools in the risk Category.

A Risk Category Rank of "Average" indicates the referenced High School Risk Score was between 25% and 75% of High Schools in the risk Category.

A Risk Category Rank of "Low" indicates the referenced High School Risk Score was in the bottom 25% of High Schools in the risk Category.

A Risk Category Rank of "Very Low" indicates the referenced High School Risk Score was in the bottom 10% of High Schools in the risk Category.

**Review Considerations**

- 1) To get an overall sense of risk severity for both consumption and consequence, examine the "Risk Percentile". It reflects what % of High Schools had a Risk Score LOWER than the referenced High School.
- 2) To ensure that the risk score is meaningful, examine the "Indicators with data" column. Risk scores based on few indicators should be interpreted with caution. In total, 21 indicators were used.
- 3) To consider other contextual information, examine the "Population: Age 10-17", "economic deprivation" indicator, and the "troubled family" indicator. Note the "Population 10-17 year olds" value may be greater than district enrollment as it accounts for kids not in school as well as those in private schools.

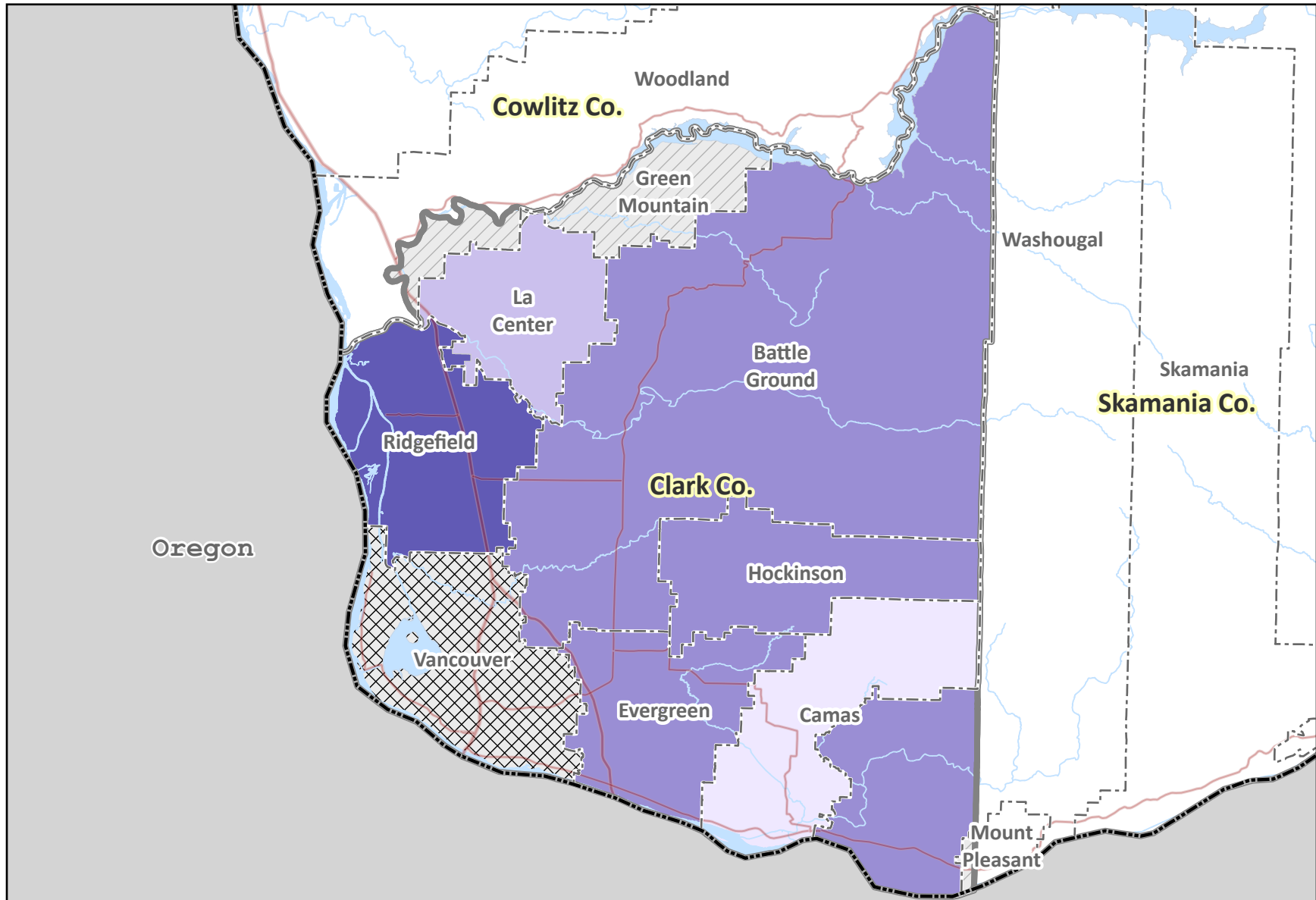
**ATTENTION! HYS 2021 is different** from past surveys in several ways, so caution should be used when comparing HYS 2021 results to prior survey years/trends:

- The pandemic has likely influenced student behaviors and responses to the survey;
- There was a three-year gap (2018 to 2021) instead of the usual two-year gap - delaying the survey by a year changed the group/cohort of students being surveyed;
- This was the first time the survey was administered electronically; ~2% of students took a paper-and-pencil survey, and ~2% of students took the survey remotely (not on school property)
- Future HYS cycles will tell us more about which changes or trends will continue and which were unique to 2021.



# Marijuana Composite Ranking

by School District, Clark County

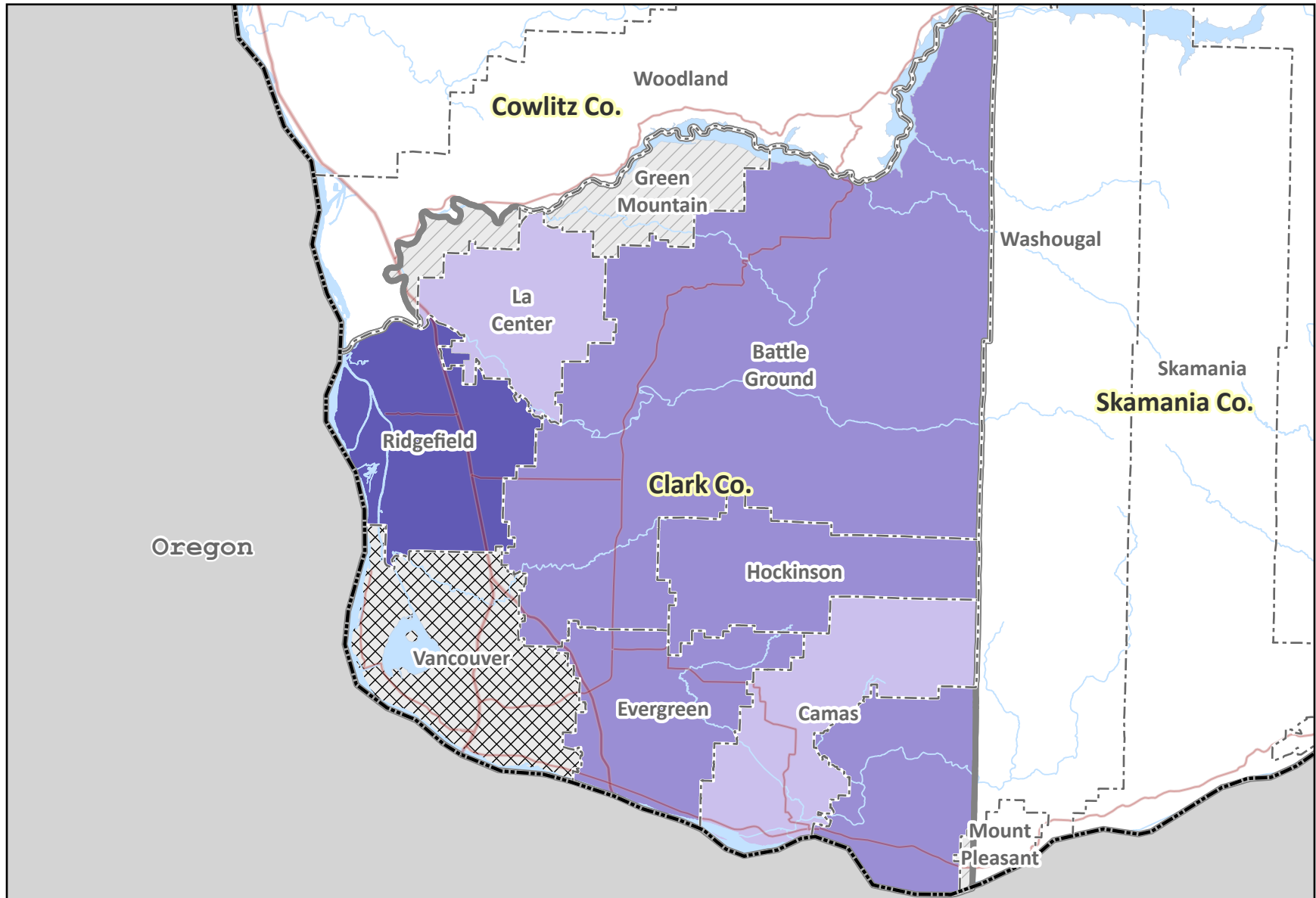


**Composite Risk Ranking**

Very High 90 - 99	High 75 - 89	Average 25 - 74	Low 10 - 24	No data	See HSAA maps	School Districts	Highways and Major Roads
		Very Low 0 - 9		Counties	Water Bodies		

# Marijuana Consumption Ranking

by School District, Clark County

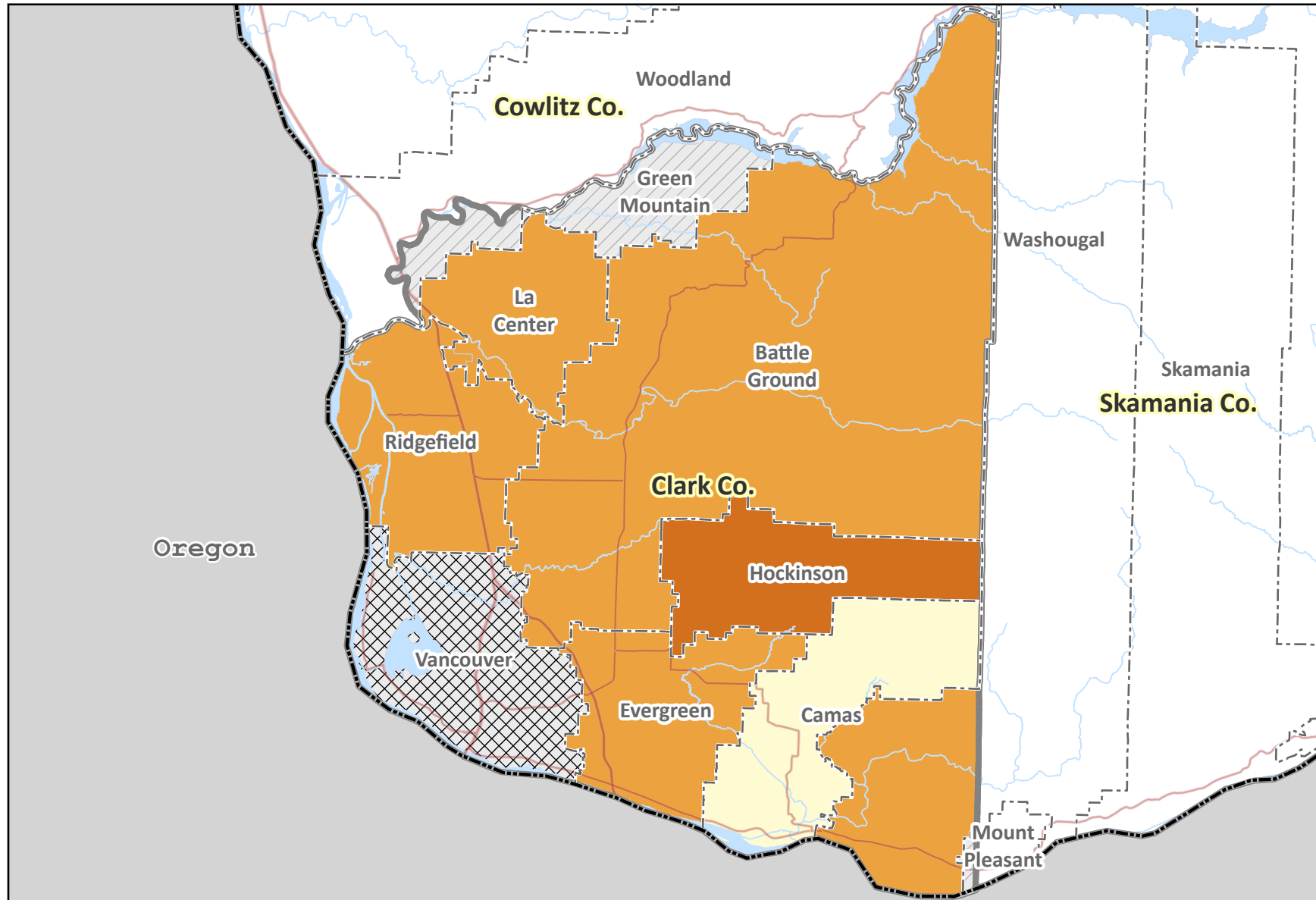


**Consumption Risk Ranking**

Very High 90 - 99	High 75 - 89	Average 25 - 74	Low 10 - 24	No data	See HSAA maps	School Districts	Counties	Highways and Major Roads	Water Bodies
-------------------	--------------	-----------------	-------------	---------	---------------	------------------	----------	--------------------------	--------------

# Alcohol, Tobacco, Marijuana and Prescription Opioids Composite Ranking

by School District, Clark County



**Composite Risk Ranking**

Very High 90 - 99	High 75 - 89	Average 25 - 74	Low 10 - 24	Very Low 0 - 9	No data	See HSAA maps	School Districts	Counties	Highways and Major Roads	Water Bodies
-------------------	--------------	-----------------	-------------	----------------	---------	---------------	------------------	----------	--------------------------	--------------



Transforming lives

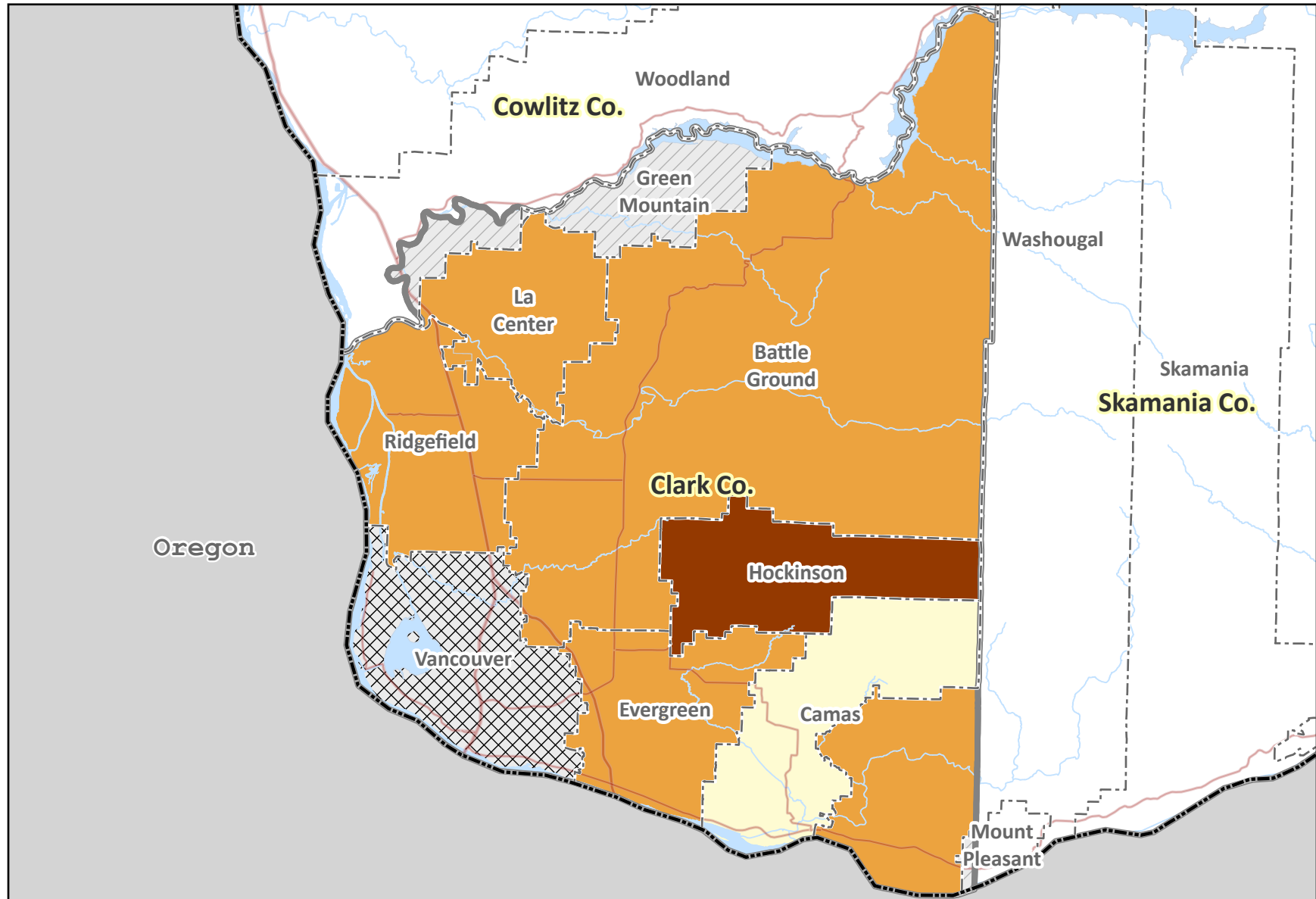
**DATA NOTES:** The percentile of the composite risk scores. The composite risk scores were calculated using standardized indicators in the alcohol, tobacco, marijuana and prescription opioids (ATMO) consumption and consequence. Based on 2021 HYS data. CARTOGRAPHY: Irina Sharkova and Steve Leibenguth. **Washington State Health Care Authority**

**SOURCE:** DSHS Research and Data Analysis, Community Outcome and Risk Evaluation Geographic Information System (COREGIS).

March 2023

# Alcohol, Tobacco, Marijuana and Prescription Opioids Consumption Ranking

by School District, Clark County



**Consumption Risk Ranking**

Very High 90 - 99	High 75 - 89	Average 25 - 74	Low 10 - 24	Very Low 0 - 9	No Data	See HSAA maps	School Districts	Highways and Major Roads	Water Bodies
							Counties		



Transforming lives

**DATA NOTES:** The percentile of the consumption risk scores. The consumption risk scores were calculated using standardized indicators in the alcohol, tobacco, marijuana and prescription opioids (ATMO) consumption. Based on 2021 HYS data. CARTOGRAPHY: Irina Sharkova and Steve Leibenguth.

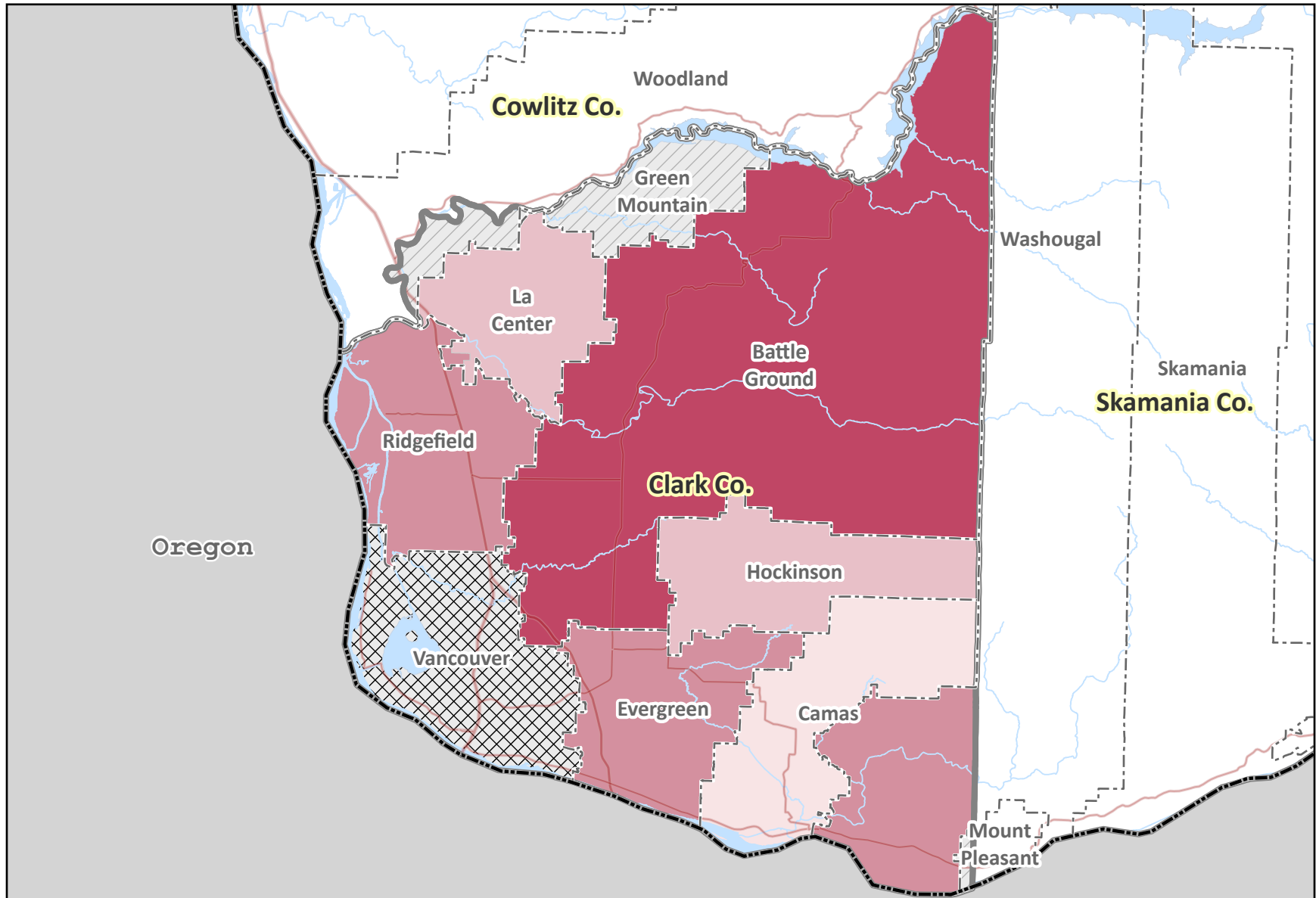
**SOURCE:** DSHS Research and Data Analysis, Community Outcome and Risk Evaluation Geographic Information System (COREGIS).



March 2023

# Consequence Risk Ranking

by School District, Clark County



**Consequence Risk Ranking**

<span style="display:inline-block; width:15px; height:15px; background-color:#800000;"></span> Very High 90 - 99	<span style="display:inline-block; width:15px; height:15px; background-color:#C00000;"></span> High 75 - 89	<span style="display:inline-block; width:15px; height:15px; background-color:#E06666;"></span> Average 25 - 74	<span style="display:inline-block; width:15px; height:15px; background-color:#F0C0C0;"></span> Low 10 - 24	<span style="display:inline-block; width:15px; height:15px; border:1px dashed black;"></span> No Data	<span style="display:inline-block; width:15px; height:15px; border:1px dashed black;"></span> See HSAA maps	<span style="display:inline-block; width:15px; height:15px; border:1px solid black;"></span> School Districts	<span style="display:inline-block; width:15px; height:15px; border:1px solid black;"></span> Counties	<span style="display:inline-block; width:15px; height:15px; border-bottom:1px solid black;"></span> Highways and Major Roads	<span style="display:inline-block; width:15px; height:15px; background-color:#ADD8E6;"></span> Water Bodies
--	---	--	--	---	---	---	---	--	---



Transforming lives

**DATA NOTES:** The percentile of the consequence risk scores. The consequence risk scores were calculated using standardized indicators in three sub-domains: school performance, youth delinquency, and mental health. Based on 2021 HYS data. CARTOGRAPHY: Irina Sharkova and Steve Leibenguth.

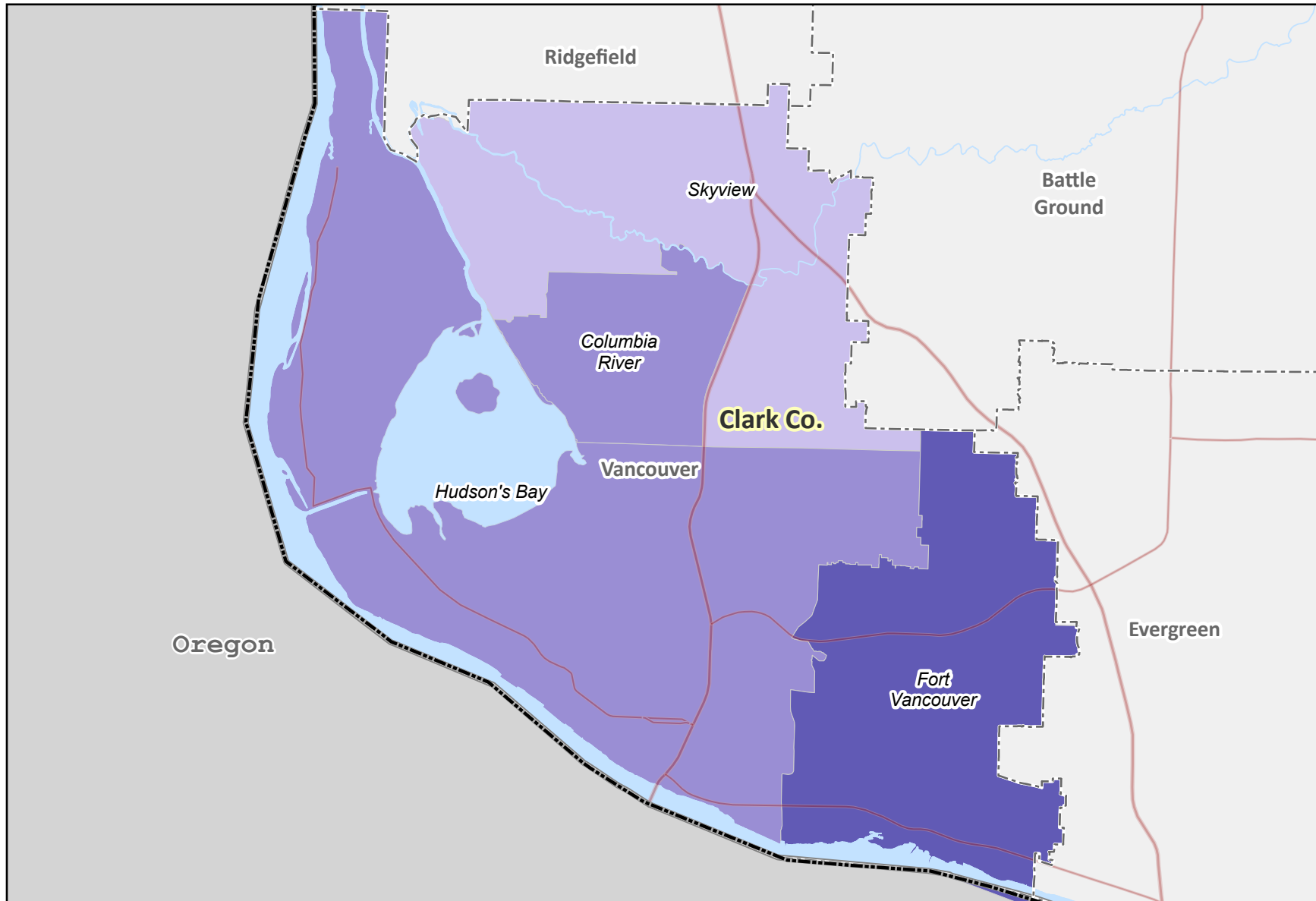
**SOURCE:** DSHS Research and Data Analysis, Community Outcome and Risk Evaluation Geographic Information System (COREGIS).



March 2023

# Marijuana Composite Ranking

## by High School Attendance Area, Vancouver Public Schools



**Composite Risk Ranking**

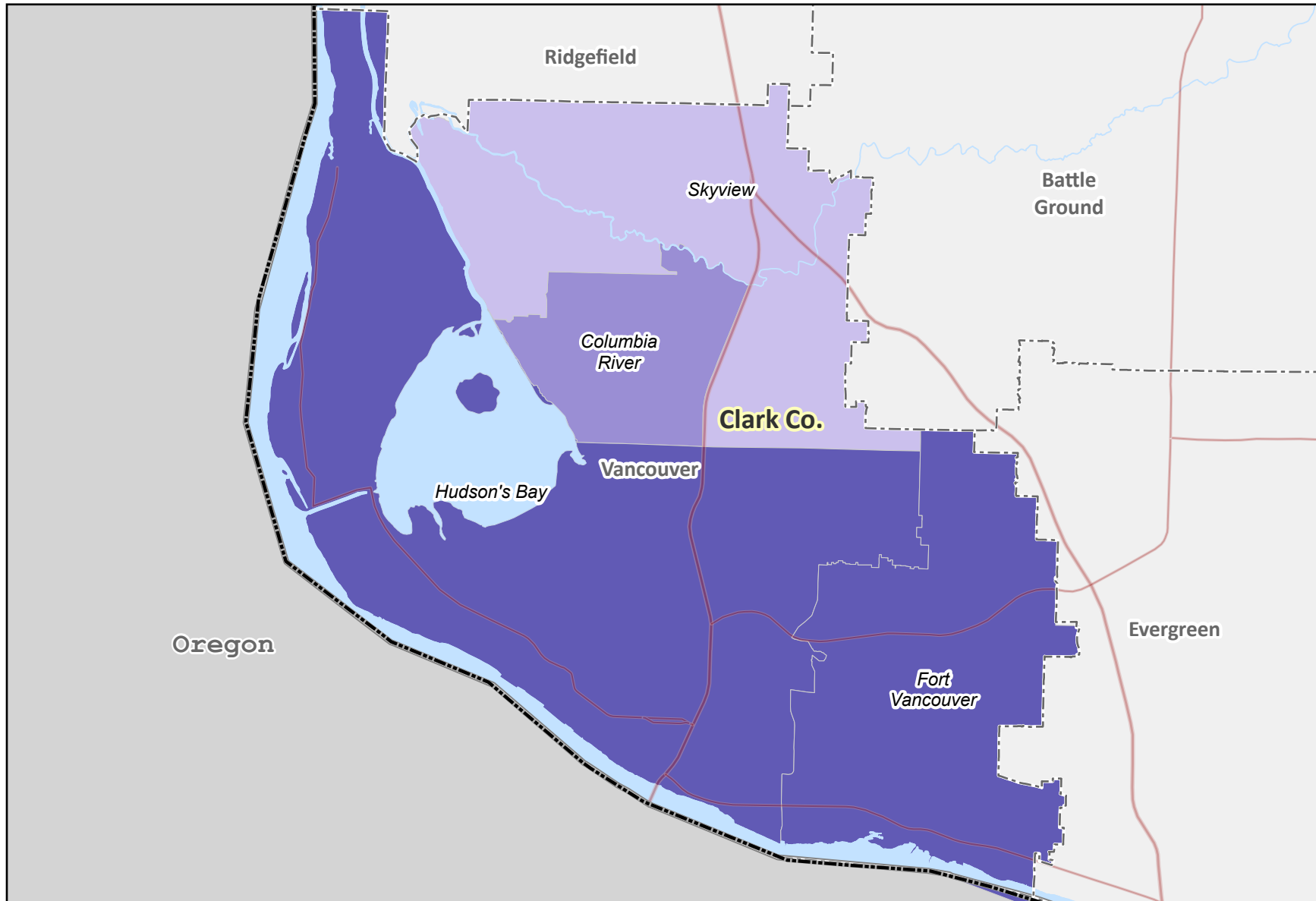
Very High 90 - 99	High 75 - 89	Average 25 - 74	Low 10 - 24	No data	School Districts	Highways and Major Roads
		Very Low 0 - 9		Counties	Water Bodies	

**DATA NOTES:** The percentile of the composite risk scores. The composite risk scores were calculated using standardized indicators in marijuana consumption and consequence. Based on 2021 HYS data. CARTOGRAPHY: Irina Sharkova and Steve Leibenguth.  
**SOURCE:** DSHS Research and Data Analysis, Community Outcome and Risk Evaluation Geographic Information System (COREGIS).



# Marijuana Consumption Ranking

## by High School Attendance Area, Vancouver Public Schools



**Consumption Risk Ranking**

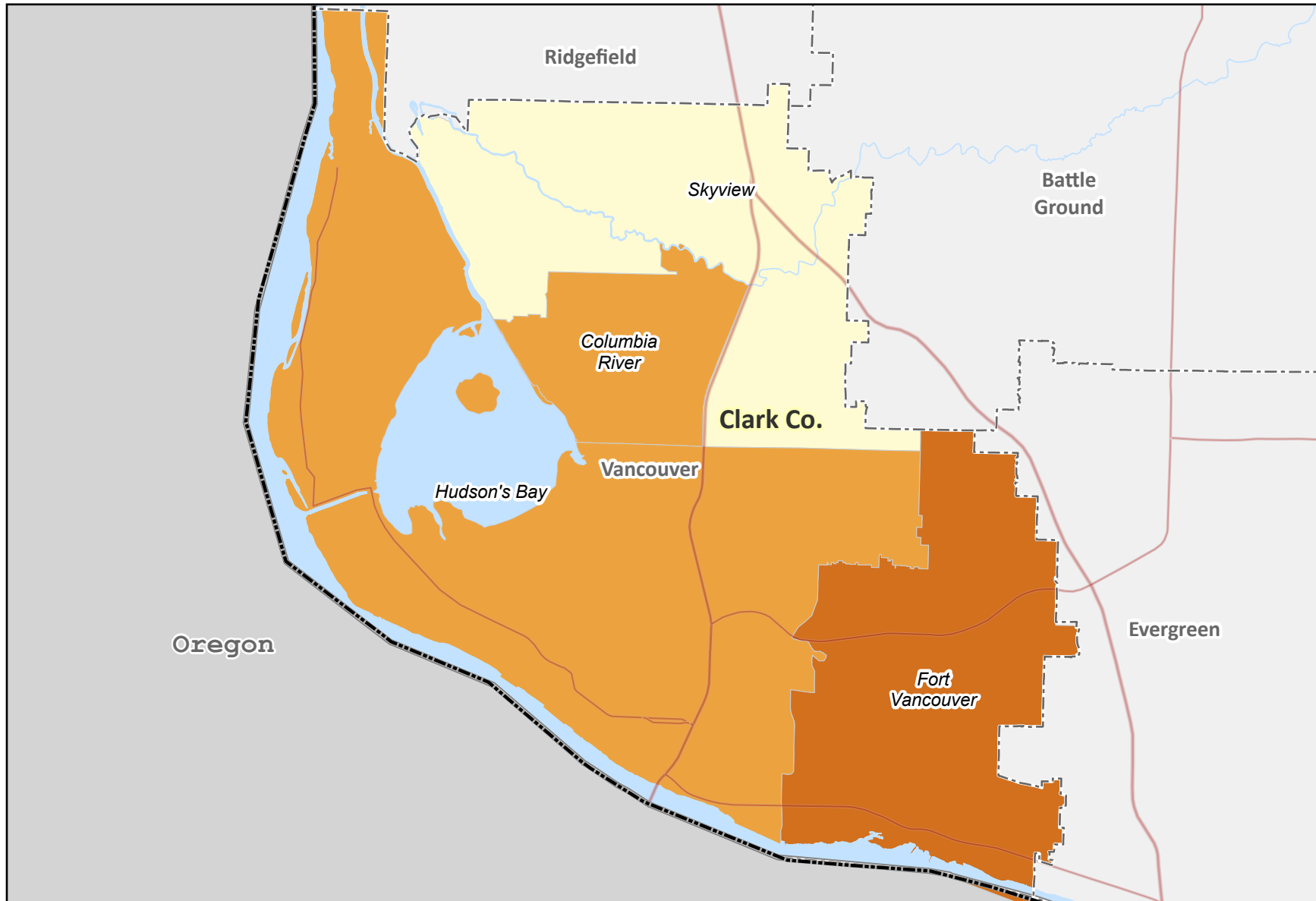
Very High 90 - 99	High 75 - 89	Average 25 - 74	Low 10 - 24	No data	School Districts	Highways and Major Roads
		Very Low 0 - 9		Counties	Water Bodies	

**DATA NOTES:** The percentile of the consumption risk scores. The composite risk scores were calculated using standardized indicators in marijuana consumption. Based on 2021 HYS data. CARTOGRAPHY: Irina Sharkova and Steve Leibenguth.

**SOURCE:** DSHS Research and Data Analysis, Community Outcome and Risk Evaluation Geographic Information System (COREGIS).

# Alcohol, Tobacco, Marijuana and Prescription Opioids Composite Ranking

by High School Attendance Area, Vancouver Public Schools



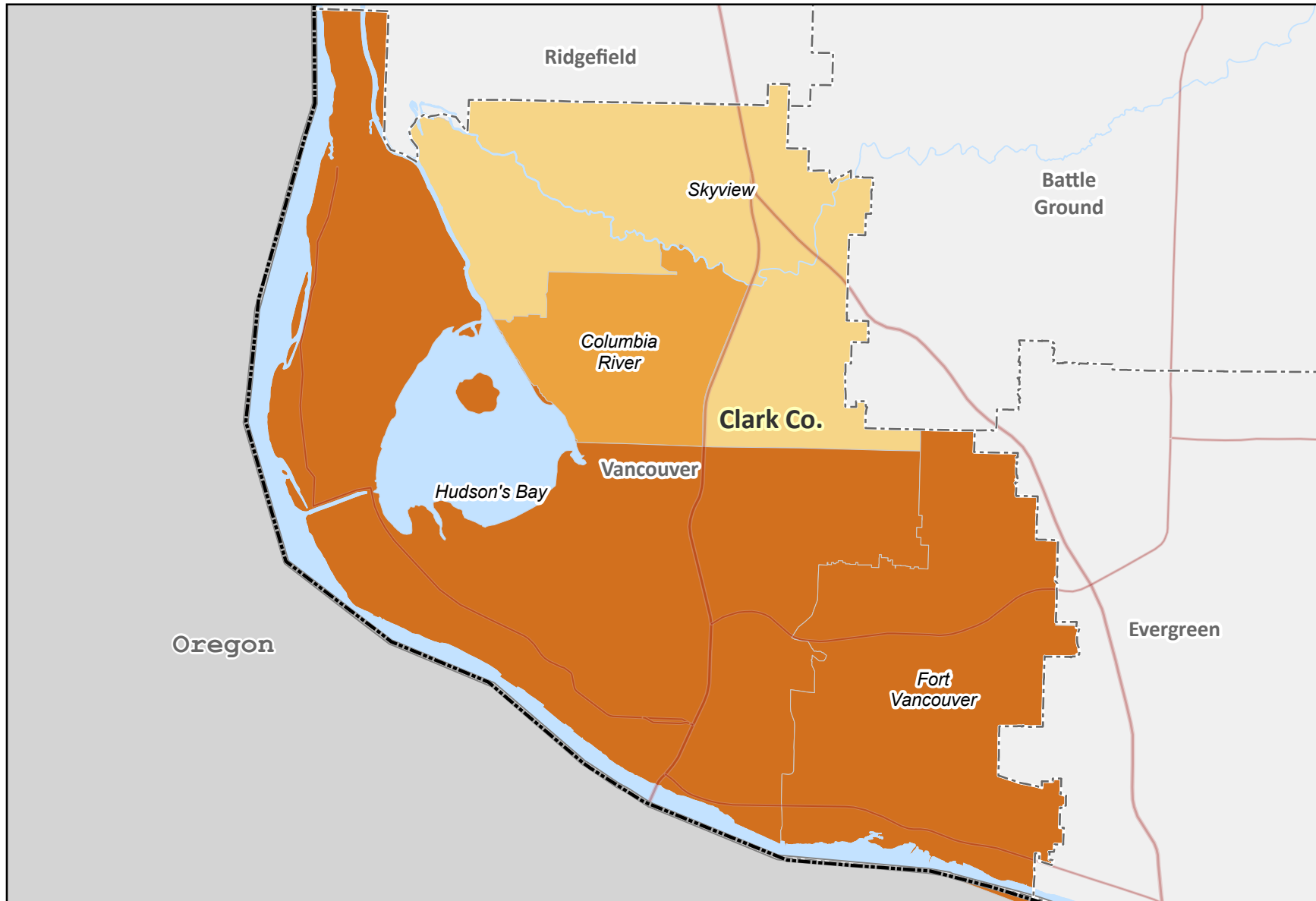
**Composite Risk Ranking**

Very High 90 - 99	High 75 - 89	Average 25 - 74	Low 10 - 24	Very Low 0 - 9	No data	School Districts	Highways and Major Roads
					Counties	Water Bodies	



# Alcohol, Tobacco, Marijuana and Prescription Opioids Consumption Ranking

by High School Attendance Area, Vancouver Public Schools

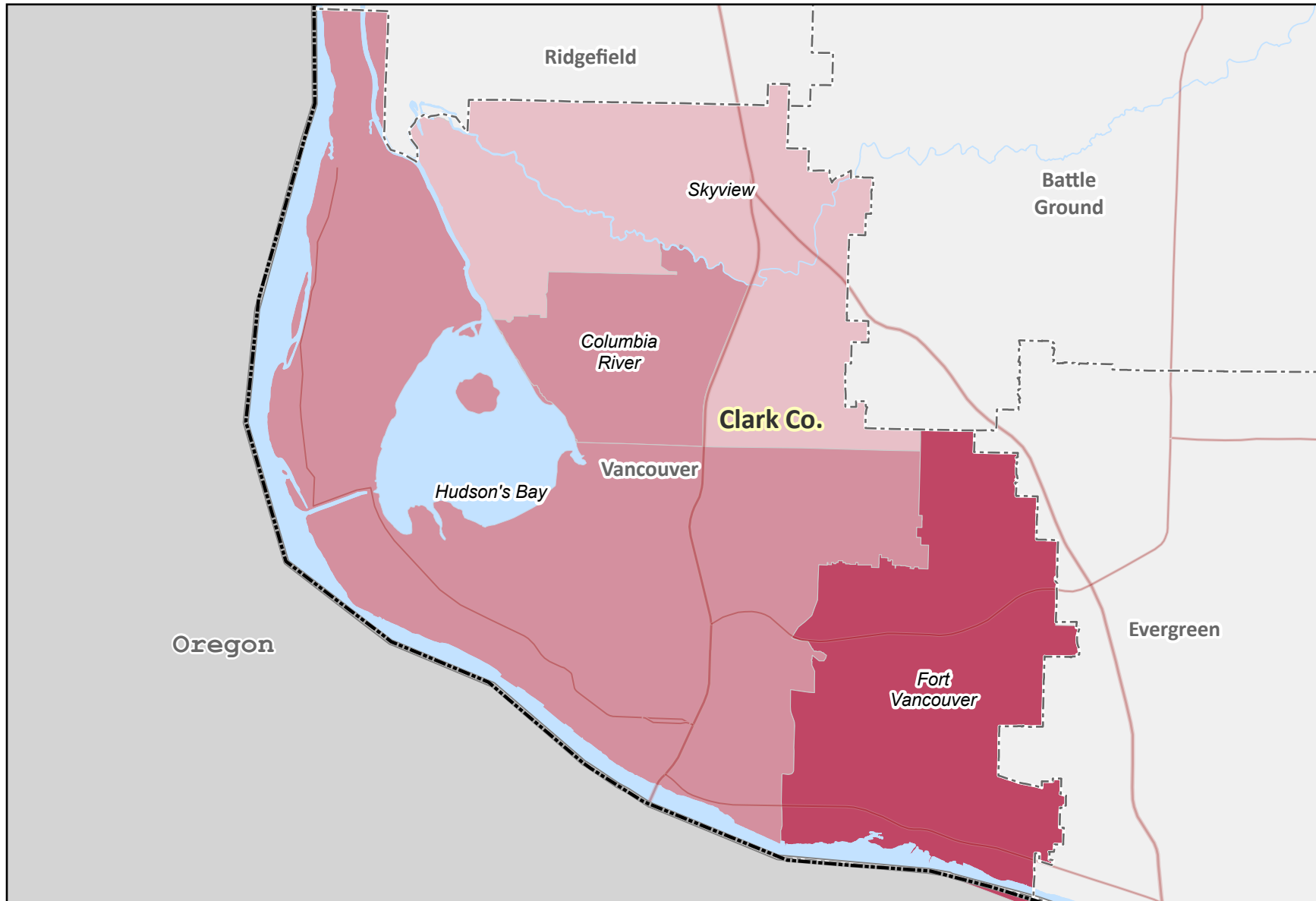


**Consumption Risk Ranking**

Very High 90 - 99	High 75 - 89	Average 25 - 74	Low 10 - 24	No Data	School Districts	Highways and Major Roads
			Very Low 0 - 9	Counties	Water Bodies	

# Consequence Risk Ranking

by High School Attendance Area, Vancouver Public Schools



**Consequence Risk Ranking**

<span style="display:inline-block; width:15px; height:15px; background-color:#800040;"></span> Very High 90 - 99	<span style="display:inline-block; width:15px; height:15px; background-color:#C0392B;"></span> High 75 - 89	<span style="display:inline-block; width:15px; height:15px; background-color:#E74C3C;"></span> Average 25 - 74	<span style="display:inline-block; width:15px; height:15px; background-color:#F08080;"></span> Low 10 - 24	<span style="display:inline-block; width:15px; height:15px; border:1px dashed black;"></span> No Data	<span style="display:inline-block; width:15px; height:15px; border:1px dashed black;"></span> School Districts	<span style="display:inline-block; width:15px; height:15px; border:1px solid black;"></span> Counties	<span style="display:inline-block; width:15px; height:15px; border:1px solid black;"></span> Highways and Major Roads	<span style="display:inline-block; width:15px; height:15px; background-color:#ADD8E6;"></span> Water Bodies
--	---	--	--	---	--	---	---	---