

# August Prevention Learning Community Meeting

Hosted by: Division of Behavioral Health and Recovery

Wednesday, August 17, 2022

9:00 a.m. – 11:00 a.m.

*Please note, there is no 3<sup>rd</sup> hour training*

Time	Agenda
9:00-9:20 a.m. 20 min	<b>Welcome / Introduce new prevention providers to the call</b>
9:20-9:30 a.m. 10 min	<b>Wilderness Therapy</b> <i>Julia Cramer – Washington State Institute for Public Policy</i>
9:30-9:35 a.m. 5 min	<b>Saying It Out Loud</b> <i>Amanda Lewis – DBHR</i>
9:35-10:35 a.m. 60 min	<b>Statewide Updates</b> <i>DBHR Prevention Section</i> <ul style="list-style-type: none"> <li>• SPE</li> <li>• Tribal &amp; CBO</li> <li>• CPWI</li> <li>• Contracts</li> <li>• Site Visits</li> <li>• Minerva</li> <li>• And other general updates.</li> </ul>
10:35-10:50 a.m. 15 min	<b>Prevention Summit</b> <i>Kersten Tano &amp; Isaac Derline – DBHR</i>
10:50-11:00 a.m. 10 min	<b>Community Survey Updates</b> <i>Sandy Salivaras-Bodner – DBHR</i>

# welcome

- ▶ Amber Brooks, CPWI Coordinator, Orting
- ▶ Jasmine Helm, CPWI Coordinator, Dayton
- ▶ Jessica Barber, CPWI Coordinator, Granite Falls
- ▶ Josh Hackney, CPWI Coordinator, Cle Elum/Roslyn
- ▶ Katie Houghton, Fiscal Agent Lead, Columbia County
- ▶ Kelley Groen-Sieckmann, CPWI Coordinator, Central Vancouver
- ▶ Marcos Sauri, CPWI Coordinator, Clover Park
- ▶ Stacy Everett, CPWI Coordinator, Tenino
- ▶ Cohort 9 Fellows – Gabe Evenson & Jennifer Wilkins
- ▶ Sonja Pipek – promoted to Tribal and CBO Services Supervisor

*Please raise your hand or type into the question pane if you are new to the Prevention community and we would love to welcome you!*

# 2022 Learning Community Meeting Remaining 2022 Schedule

---

Month	Date	Meeting Platform	Athena Forum Calendar Link
September	September 28	Zoom	<a href="https://theathenaforum.org/september-2022-learning-community-meeting">https://theathenaforum.org/september-2022-learning-community-meeting</a>
November	November 8 – All Provider Meeting – Hybrid		

# Training Announcements

---

Alicia Hughes | Prevention Supervisor |  
HCA/DBHR

Training	Date(s) and Location
<b>Overdose prevention, harm reduction, and treatment series by the WA Poison Center</b>	August 8-19 Virtual
<b>Cannabis: Moving Forward, Protecting Health</b>	August 15 Virtual
<b>Tribal Health Equity Summit</b>	August 16 Virtual
<b>Stimulants 101</b>	August 17 Virtual
<b>NPN Conference</b>	August 23-25 Virtual
<b>Advancing Applications of HOPE, the Science of the Positive, and Positive Community Norms</b>	August 29 Virtual
<b>Substance Abuse Prevention Skills Training (SAPST)</b>	<b>Session 1:</b> August 29 <sup>th</sup> , 2022 – 9 AM – 3:30 PM <b>Session 2:</b> August 30 <sup>th</sup> , 2022 – 9 AM – 3:30 PM <b>Session 3:</b> September 6, 2022 - 9 AM – 3:30 PM <b>Session 4:</b> September 7, 2022 – 9 AM – 3:30 PM
<b>CADCA Bootcamp</b>	September 12-15, 9:00AM-4:00PM PT Virtual
<b>Rural Prevention Conference</b>	Thursday September 22, 2022 from 12 – 4 p.m. and Friday September 23, 2022 from 8:30 a.m. – 1 p.m. Yakima Convention Center

For more info, visit <https://www.theathenaforum.org/event-calendar/month>.

# Fellowship Updates

---

- ▶ Cohort 10 Fellows joining team soon!
  - ▶ Applications closed on August 8<sup>th</sup>
- ▶ October 2022 through July 2023
- ▶ Visit these pages for more info:
  - ▶ [CPWI Fellowship Athena page](#)
  - ▶ [CPWI Fellowship IMPACT Lab page](#)



# Certified Prevention Professional (CPP) Recognition

---

Alicia Hughes | Prevention Supervisor |  
HCA/DBHR



# Congratulations

*Please raise your hand or type into the chat if you received your CPP and we will announce your success!*

# Wilderness Therapy

---

Julia Cramer | WSIPP

# WASHINGTON STATE INSTITUTE FOR PUBLIC POLICY

We do non-partisan research at legislative/board direction.

In 2021, we were assigned to study wilderness therapy programs.

- What do wilderness therapy programs look like? – report 1 [link](#)
- Are they effective? – report 1 [link](#)
- Is there interest among prevention and treatment coalitions and tribes in WA? (report 2 forthcoming)

## What is Wilderness Therapy?

*Programs combine therapeutic practices with outdoor activities like camping and backpacking to serve individuals needing behavioral health, mental health, and substance use support.*

# WASHINGTON STATE INSTITUTE FOR PUBLIC POLICY

Few programs exist in WA and there is no state funding.

Our assignment is exploratory and aims to help legislators understand the landscape of programs and interest among stakeholders in the state.

If wilderness therapy is relevant to your work and the individuals you serve, we'd like to hear from you.

Contact Julia Cramer at WSIPP to learn more:

[julia.cramer@wsipp.wa.gov](mailto:julia.cramer@wsipp.wa.gov) ; 360.664.9073

Thank you!

# Saying It Out Loud

---

Amanda Lewis | Co-occurring Treatment Lead  
| HCA/DBHR



Washington State

# Say It Out Loud Conference

- ▶ Provides training and education to service providers and parents, guardians to better serve and support individuals who identify as lesbian, gay, bisexual, transgender, queer, intersex, asexual (LGBTQIA+).
- ▶ We would like to invite youth coalitions to present and attend SIOL 2023 who are implementing LGBTQIA+ focused projects.
- ▶ Date and location to be determined.

Contact Amanda Lewis | HCA/DBHR  
amanda.lewis@hca.wa.gov | 360-628-1730

# Statewide Updates

---

Kasey Kates | Prevention Supervisor |  
HCA/DBHR

# Overdose Awareness Day

---

- ▶ Wednesday, August 31, 2022.
- ▶ Overdose Awareness Day materials shared:
  - ▶ Newsletter boiler plate, social media posts covering
  - ▶ Safe storage/safe disposal
  - ▶ Signs of an overdose post
  - ▶ Carrying naloxone
  - ▶ Supporting those grieving an overdose loss.



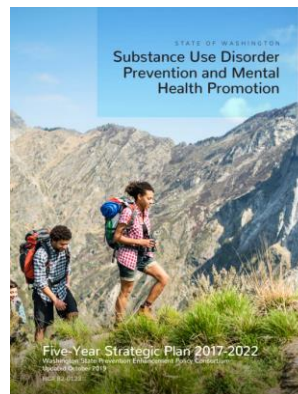


# State Prevention Enhancement (SPE) Updates

---

## ▶ What is the SPE?

- ▶ Comprised of representatives from 26 state and tribal agencies and organizations.
- ▶ Through partnerships we strengthen and support an integrated, statewide system of community-driven substance use disorder prevention, mental health promotion, and related issues.
- ▶ Responsible for the state-level planning and implementation of collaborative strategies to address substance use disorder prevention and mental health promotion.

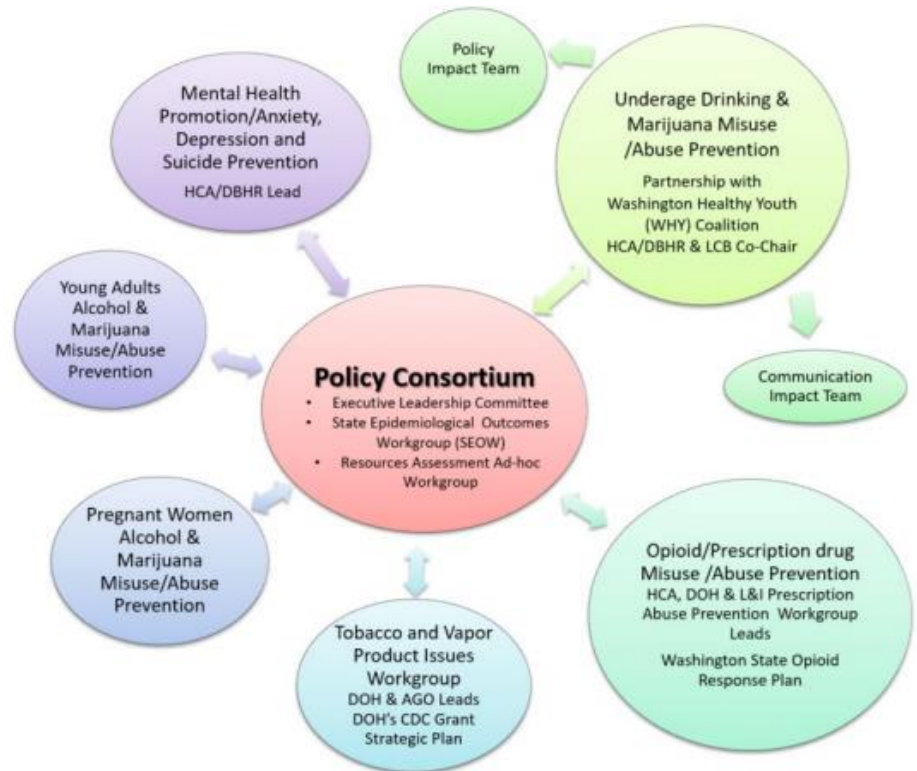


# State Prevention Enhancement (SPE) Updates

## ▶ SPE Workgroups:

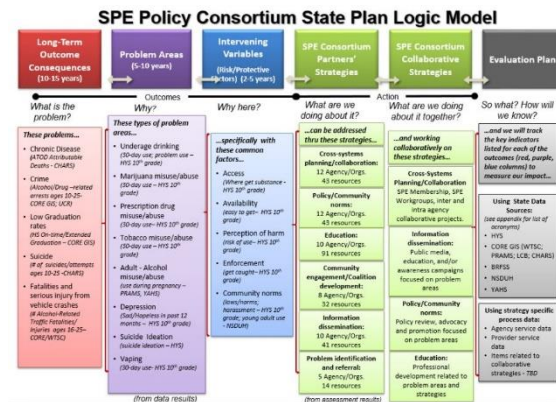
- ▶ Opioid Prevention Workgroup
- ▶ Young Adults Cannabis Prevention Workgroup
- ▶ WHY Coalition
- ▶ Mental Health Workgroup
- ▶ Commercial Tobacco and Vapor Products Workgroup

- ## ▶ More info:
- <https://theathenaforum.org/spe>



# State Prevention Enhancement (SPE) Updates

- ▶ What are we currently working on?
  - ▶ In the process of updating the 5-Year Strategic Plan
  - ▶ State Epidemiological Outcomes Workgroup is finalizing their needs assessment
  - ▶ Completing a resource assessment.
  - ▶ All workgroups are updating action plans.



# State Prevention Enhancement (SPE) Updates

---

- ▶ What can you do to help inform this work?
  - ▶ Identify gaps in prevention services. Is there something we need to enhance or grow?
  - ▶ Identify what is working well. How can we share this with other prevention providers and states?
  - ▶ How do we set indicators, considering the impacts of the COVID-19 pandemic?
  
- ▶ **Opportunity to provide feedback at the November 8<sup>th</sup> Provider Meeting**

# Tribal & CBO Updates

---

- ▶ Tribes have been submitting Tribal Plans to include prevention programs and strategies.



- ▶ SOR III CBO RFA is now CLOSED!
  - ▶ Reminder, all funding opportunities posted at <https://theathenaforum.org/grants>.



# CPWI Updates

---

## ▶ Action Plan & Budget updates

- ▶ Cohort 1-4 (Coalitions) were due June 15th, and most have been approved!
- ▶ Cohort 1-7 (SAPISP) were due July 5<sup>th</sup>, and all have been approved!



WOOHOO!

- ▶ Cohort 5-6 updates are due September 15<sup>th</sup>.
  - ▶ Reminder, these are from 9/30/2022 – 6/30/2023.

## ▶ Strategic Planning timeline is under construction!

- ▶ Consulting with SEOW & SPE on how to navigate the new HYS data.
- ▶ More information later this year/early next year!

# Contract Updates

---



- ▶ 45-day billing letter sent fall of 2021
  - ▶ Invoice due date of 90-days after service delivery is updated to 45-days after service delivery.
  - ▶ All local service contracts already had the invoice due date of 45-days after fund source end date.
- ▶ CPWI amendments later this summer/fall
  - ▶ Cohort 1-4 (Coalitions) to update contract language.
  - ▶ Cohort 5 & 6 (Coalitions & SAPISP) to add-in funding & update contract language.
  - ▶ Cohort 7 (Coalitions & SAPISP) working on plan to backfill SABG CE.



# Upcoming Billing Due Dates

---

- ▶ **Final invoice due date was 8/14/2022 for GFS, DMA, and MHPP funding that ended on 6/30/2022.**
  - ▶ If you are needing to submit an invoice with these funds, please submit a late invoice exception request outlining the request for an exception including why the invoice submittal is late as well as a plan to correct this moving forward.
- ▶ **Final invoice due date is 11/13/2022 for SOR II Y2 and PFS Y4 funding that ends on 9/29/2022.**
  - ▶ Due to this being federal funding, all late invoice exception requests must be additionally be routed by contract managers through agency leadership including to our CFO.
- ▶ As with any late invoice exception request, we cannot guarantee payment.
- ▶ Review your Awards & Revenue for more information!
- ▶ Have concerns about meeting upcoming billing due dates?
  - ▶ Connect proactively with your prevention manager and submit a formal request asap.



# CPWI & CBO Site Visits

---

- ▶ Each contract goes through a risk assessment process which dictates how the contract is managed and monitored.
- ▶ Local service contracts are managed and monitored through a variety of efforts:
  - ▶ Deliverables including those like prevention services data being due the 15<sup>th</sup> of each month for the month prior.
  - ▶ Invoice submittal.
  - ▶ Operated in good faith.
  - ▶ And through Site Visits!
- ▶ September – November 2022.
  - ▶ Virtually or in-person.
- ▶ Based upon feedback:
  - ▶ Updated Checklist.
  - ▶ Ability to submit backup documentation virtually even if in-person.
  - ▶ 1 week notice of invoices selected.



# Minerva 2.0 Updates

---

Lauren Bendall | Prevention Systems Project Manager  
| HCA/DBHR

# Minerva 2.0 Updates: Surveys

---

## ▶ Surveys

- ▶ Survey Functionality has been released to the field:
  - ▶ Survey Functionality is similar to that of Minerva 1.0.
    - ➔ Surveys must be mapped with the proper Intervening Variable (risk and Protective Factor) and a Local Condition (Contributing Factor) for survey option to display.
  - ▶ Survey mapping with Intervening Variable (risk and Protective Factor) and a Local Condition (Contributing Factor) is available in the updated Survey Selection Guide

# Minerva 2.0 Updates: Surveys

## ▶ Surveys

- ▶ The Minerva Survey Selection Guide has been updated:
  - ▶ This guide is posted to the Minerva Knowledge Base and the documents section in Minerva 2.0:

### Minerva 2.0 reference documents

The following documents provide some quick reference guides as you get started and use the system. Please note you must complete your training and set up your account in order to gain access to Minerva 2.0. These documents are for your reference once you have access.

- **Welcome document:** Use this document to follow the first steps for action once you are into Minerva 2.0.
- **Cohort/campaign decision tree:** This document provides a helpful decision-making tool when deciding where to report activities in the systems.
- **Program strategy/program type categories definitions:** These definitions are useful when identifying your program strategy type.
- **Build capacity Channel reporting guidance:** These definitions are useful when identifying reporting in the Build Capacity channel.
- **Community Mentoring reporting guidance:** This document outlines key changes, key definitions, community mentoring hours reporting, and offers a sample for calculating community mentoring hours.
- **To add a new staff member** to your account, Complete the [User Access Form](#) and submit it to [PrevMIS@hca.wa.gov](mailto:PrevMIS@hca.wa.gov).

### Additional resources:

- **Survey selection guide:** Use the Survey selection guide to identify surveys. The first column includes risk and protective factors, and the second column lists measurable objectives. [Don't see an expected survey? Contact your System Manager.](#) [August 4, 2022]
- **Need to see a survey?** Open a zip folder of PDFs of all available surveys. [November 22, 2017]

- ▶ Surveys can be added to Minerva 2.0 based on a request made by the Px Manager working with the community:
  - ▶ This request will be reviewed internally to determine survey addition to Minerva 2.0.

# Minerva 2.0 Updates: Surveys

---

## ▶ Surveys

- ▶ Multiple trainings and Minerva 2.0 TA Calls have been hosted to facilitate learning around surveys.
  - ▶ Additional Minerva 2.0 TA Calls will be posted to the Athena Forum Calendar shortly.

# Minerva 2.0 Updates: Surveys and Site Visits

---

## ▶ Surveys and Site Visits

- ▶ An additional tool has been created to aid Px Managers in reviewing survey data submission through Minerva 2.0.
  - ▶ This is an internal tool only.
- ▶ This tool relies on data entered in Minerva 2.0.
- ▶ Using this tool, Px Managers can see how many surveys have been submitted for a cohort and compare to the number of expected surveys to be submitted.
- ▶ Future Minerva 2.0 Considerations:
  - ▶ HCA is working to make this data more readily available to be pulled by Providers/Contractors as well.

# Minerva 2.0 Updates: System Updates

---

## ▶ System Updates

- ▶ Key Performance Indicators (KPIs) are no longer available for viewing and have been removed from the dashboard.
- ▶ Current System Development:
  - ▶ Reports:
    - HCA is currently working through building reports with vendor that will be accessible through the Evaluate Channel.
  - ▶ Functionality and Ease of Use:
    - HCA is routinely reviewing aspects of the system to update and enhance user accessibility. These items are being documented and will be addressed near the end of the system development.
- ▶ HCA is in the process of updating Minerva 1.0 Guidance documents in the Minerva Knowledge Base

# Minerva 2.0 Updates: Provider Success

---

## ▶ Provider Success

- ▶ Minerva 2.0 has been live for over **SIX** months now!
  - ▶ HCA has hosted over 20 trainings which include the following:
    - Minerva 2.0 General TA Calls
    - Minerva 2.0 Survey Functionality Trainings
    - Minerva 2.0 Provider/Contractor Trainings
- ▶ Providers have been able to enter survey data into the Minerva 2.0 for **OVER** a month now!
  - ▶ As additional surveys are identified as being needed, those surveys are added through a process that requires a request facilitated by the Px Manager.



# Prevention Summit

---

Kersten Tano & Isaac Derline |  
Prevention System Managers |  
HCA/DBHR

# 2022 Prevention Summit

---

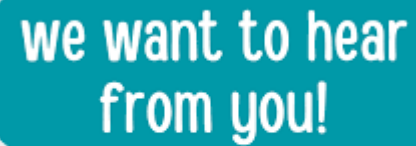
- ▶ November 8 – 9, 2022
  - ▶ Provider Meeting the morning of the 8<sup>th</sup>
- ▶ Yakima, WA
- ▶ Registration to be launched late August!
  - ▶ In-person:
    - ▶ Adult = \$200
    - ▶ Youth = \$50
    - ▶ TAA/Chaperone: \$150
  - ▶ Virtual:
    - ▶ Adult = \$100
    - ▶ Youth = \$50
    - ▶ TAA/Chaperone = \$75



# 2022 Prevention Summit

---

- ▶ After reviewing & consulting the Governor's Roadmap to Recovery, our state and agency's HR division and Planning Committee, the following are *tentative* protocols, we are exploring for in-person Summit attendees:
  - ▶ Verification of full COVID-19 Vaccination or proof of negative COVID-19 test up to 72 hours.
    - ▶ Testing will not be available on site.
  - ▶ All in-person attendees to wear masks unless actively eating or drinking.
    - ▶ We will have extra masks on site.
  - ▶ Completion of health screening upon registration.



we want to hear  
from you!

# Poll Questions

---

- ▶ After hearing the *tentative* protocols, which format are you looking to attend at this year's summit?
  - ▶ In-person
  - ▶ Virtual
  - ▶ Unsure yet, still have to think about it or my agency's guidance on travel
  
- ▶ For those looking to bring youth, which format will your youth be looking to attend?
  - ▶ In-person
  - ▶ Virtual due to potential difficulty meeting COVID protocols
  - ▶ Virtual due to school travel or other restrictions
  - ▶ Virtual because this is what my youth prefer
  - ▶ Unsure yet

# Prevention Awards

---



- ▶ Received 14 nominations
- ▶ Review of nominations taking place!
  - ▶ Sub-teams will return their scores by August 23
- ▶ Final approval to Summit Committee by September 1
- ▶ Physical award designs will be chosen by review team by mid-September

**Congratulations and thank you** to Awards chair, Martha Williams, and all members of the Review team!

# Community Survey 2022

---

Sandy Salivaras | Research and  
Evaluation Manager | HCA/DBHR

# Outline

---

- ▶ Explore what's new in the 2022 Community Survey
  - ▶ Shorter survey
  - ▶ Revised timeline
- ▶ Review the Community Survey Requirements
- ▶ Review the Community Survey Timeline
- ▶ Q&A

# 2022 CPWI Community Survey Requirements

---

- ▶ 100-250 surveys per coalition – based on population of coalition community
  - ▶ Sample size for a diverse representative sample
  - ▶ Community population estimates and survey targets can be found on the Athena Forum

Total Population	Minimum Survey Targets
0 - 3,999	100 surveys
4,000 – 10,999	140 surveys
11,000 – 29,999	180 surveys
30,000 -49,000	215 surveys
50,000 +	250 surveys



# 2022 CPWI Community Survey Timeline

---

- ▶ July 15-November 15
  - ▶ Survey data collection by coalitions
  - ▶ Updates / Results link
    - ▶ UPDATES: We get the data around the 1<sup>st</sup> and the 15<sup>th</sup> of the month. We aim to process and get demographics out to you within 2 days after
    - ▶ RESULTS LINK: We will send the results link by request when at least 50 surveys are completed on the English link (Spanish link is NOT distributed)
- ▶ December 2022-January 2023
  - ▶ Data verification, coding, analysis, report creation
- ▶ February 2023
  - ▶ Reports & data to coalitions
- ▶ March – May 2023: Revisions and Planning
  - ▶ Feedback from stakeholders

# Community Survey Updates

---

- ▶ Updates of counts and key demographics will be sent out periodically. We aim for the beginning and middle of the month
  - ▶ August 15<sup>th</sup>
  - ▶ September 15<sup>th</sup>
  - ▶ October 14<sup>th</sup>
  - ▶ November 1<sup>st</sup>, 15<sup>th</sup>, 30<sup>th</sup>
  - ▶ Final Update: by mid December
- ▶ Monitoring representativeness of community sample and alter strategies as needed
  - ▶ Strive for a representative sample of community members
    - Missing key demographic / geographic groups limits utility of data
  - ▶ Review Data Book demographics page to identify target population
  - ▶ Revise strategy based on current tallies

# Survey Monkey Results Link

---

- ▶ We will send the results link by request when at least 50 surveys are completed on the English link
  - ▶ Spanish link is not distributed
- ▶ Though the survey is anonymous, individuals are potentially identifiable
- ▶ As more responses are collected, the chance of identification is reduced



# Questions? More info?

---

**Sandy Salivaras**

Prevention Research and  
Evaluation Manager

E-mail: [sandy.salivaras-  
bodner@hca.wa.gov](mailto:sandy.salivaras-bodner@hca.wa.gov)

Phone: 360-725-5277

It is absolutely okay  
to take time for self care.



you can't do things well  
if you don't feel well.