

State Prevention Enhancement (SPE) Policy Consortium

State Strategic Plan Overview

Version 7.27.12

Additional SPE information can be found at www.theAthenaForum.org/SPE



One

Department

Vision

Mission

Core set of Values

SPE Policy Consortium

Policy Consortium

- Department of Commerce, Community Mobilization
- Department of Early Learning
- Department of Health, Prevention and Community Health
- Department of Social and Health Services (DSHS), Division of Behavioral Health and Recovery (*Chemical Dependency and Mental Health*)
- DSHS, Office of Indian Policy
- DSHS, Office of Juvenile Justice
- Health Care Authority
- Liquor Control Board
- Office of Superintendent of Public Instruction
- Office of the Attorney General
- Office of the Lieutenant Governor
- Traffic Safety Commission
- Washington State Patrol

Advising Groups



One

Department
Vision
Mission
Core set of Values

Strategic Planning Process

- Notified of grant award (Sept. 2011)
- First Consortium meeting (Oct. 2011)
- General Framework (Nov. 2011-Jan. 2012)
- Needs Data Assessment (Mar.- Apr. 2012)
- Resources Assessment (Apr. – May 2012)
- Planning (Jun.-Jul. 2012)
- Review of Plan with stakeholders including local providers and Tribes(Jun.-Jul. 2012)
- Final Plan (July 27, 2012)



One

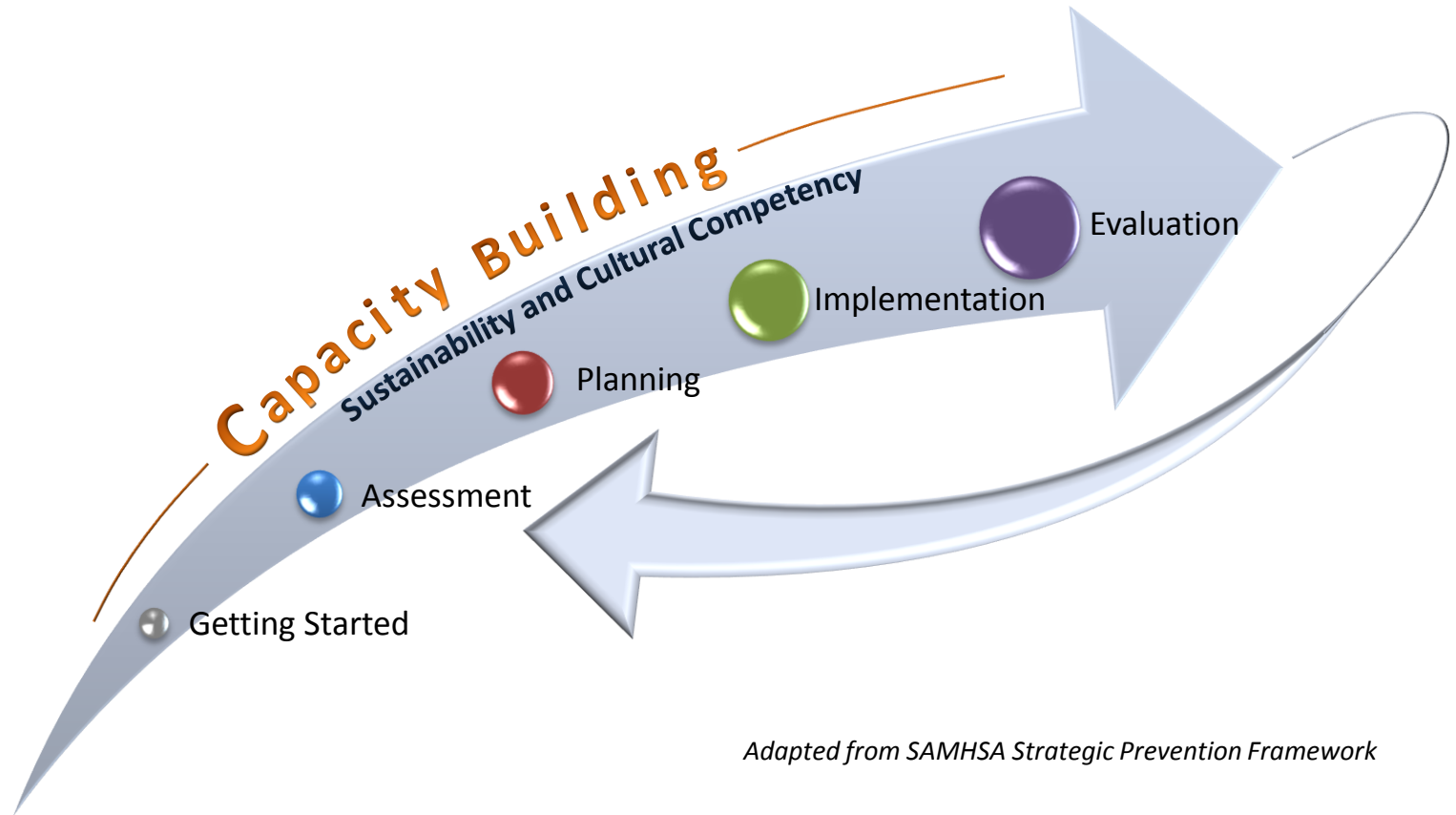
Department

Vision

Mission

Core set of Values

WASHINGTON STATE PREVENTION PLANNING FRAMEWORK



Adapted from SAMHSA Strategic Prevention Framework



One

Department
Vision
Mission
Core set of Values

Strategic Plan Outline

- ✓ Mission and Statement of Purpose
- ✓ Building Capacity
- ✓ Assessment of State
- ✓ Plan for Action (Goals and Objectives)
- ✓ Implementation
- ✓ Evaluation



One

Department

Vision

Mission

Core set of Values

SPE Mission Statement

- **Mission Statement:** Through partnerships, strengthen and support an integrated statewide system of community-driven substance abuse prevention, mental health promotion and related issues.
- **Tag Line:** *Integrating community substance abuse prevention and mental health promotion across WA.*



One

Department

Vision

Mission

Core set of Values

Results of Needs Assessment

Problem areas:

- Substance Use: Overall rankings of based on socioeconomic indicators show:
 - 1st - alcohol
 - 2nd - marijuana
 - 3rd - tobacco
 - 4th - prescription drugs (*note: watch trend related to heroine*)
 - 5th – meth
- Mental Health: key areas based on data available:
 - Depression
 - Serious Psychological Distress
 - Suicide



One

Department

Vision

Mission

Core set of Values

Results of Needs Assessment

Conclusions:

- Underage drinking remains the number one priority for prevention.
- Substance Use: Focus on 4 highest-ranked substances use problem areas.
- Mental Health: Focus on problem areas of depression and suicidal ideation.
- Both substance use and mental illness are more prevalent among youth and young adults and therefore our efforts should be focused on that age range.



One

Department

Vision

Mission

Core set of Values

Results of Resource Assessment

Summary:

- Over 50 WA state and tribal resources directly or indirectly address Substance Abuse Prevention/Mental Health Promotion (SAP/MHP)
- While we have broad coverage on all ages, these resources most often focus on age ranges of 15-17 years and 18-24 years.
- Resources are addressing*:
 - General Substance abuse (54%)
 - Education (48%)
 - Drinking and Driving (46%)
 - Family/relationships (46%)
 - ACEs (44%)
 - General Mental Health (42%)
- Most common strategies*:
 - Policy/community norms (52%)
 - Cross-system planning/collaboration (52%)
 - Community engagement/coalition (40%)

*Note: Resources may be duplicated as agencies were allowed to select more than one area, therefore category totals will equal more than 100 percent if combined.



One

Department

Vision

Mission

Core set of Values

Results of Resource Assessment

Conclusions:

- Continue to support what we have in place with state and tribal programs.
- Build on current partnerships.
- Establish new collaborative strategies/activities to work on together as SPE Consortium.



One

Department

Vision

Mission

Core set of Values

SPE Consortium Key Values

- We will build community wellness through substance abuse prevention and mental health promotion.
- Make data-informed decisions.
- Consider the entire lifespan of the individual.
- Support community-level initiatives.
- Ensure cultural competence, including honoring the Centennial Accord between the Federally Recognized Indian Tribes in Washington State and the State of Washington.

(continued on next slide)



One

Department

Vision

Mission

Core set of Values

SPE Consortium Key Values

(continued from previous slide)

- Address health disparities.
- We will work collaboratively to produce a collective-impact.
- Consider impacts of Health Care Reform and Indian Health Care Improvement Act.
- Honor current state and tribal resources that support substance abuse prevention/mental health promotion.



One

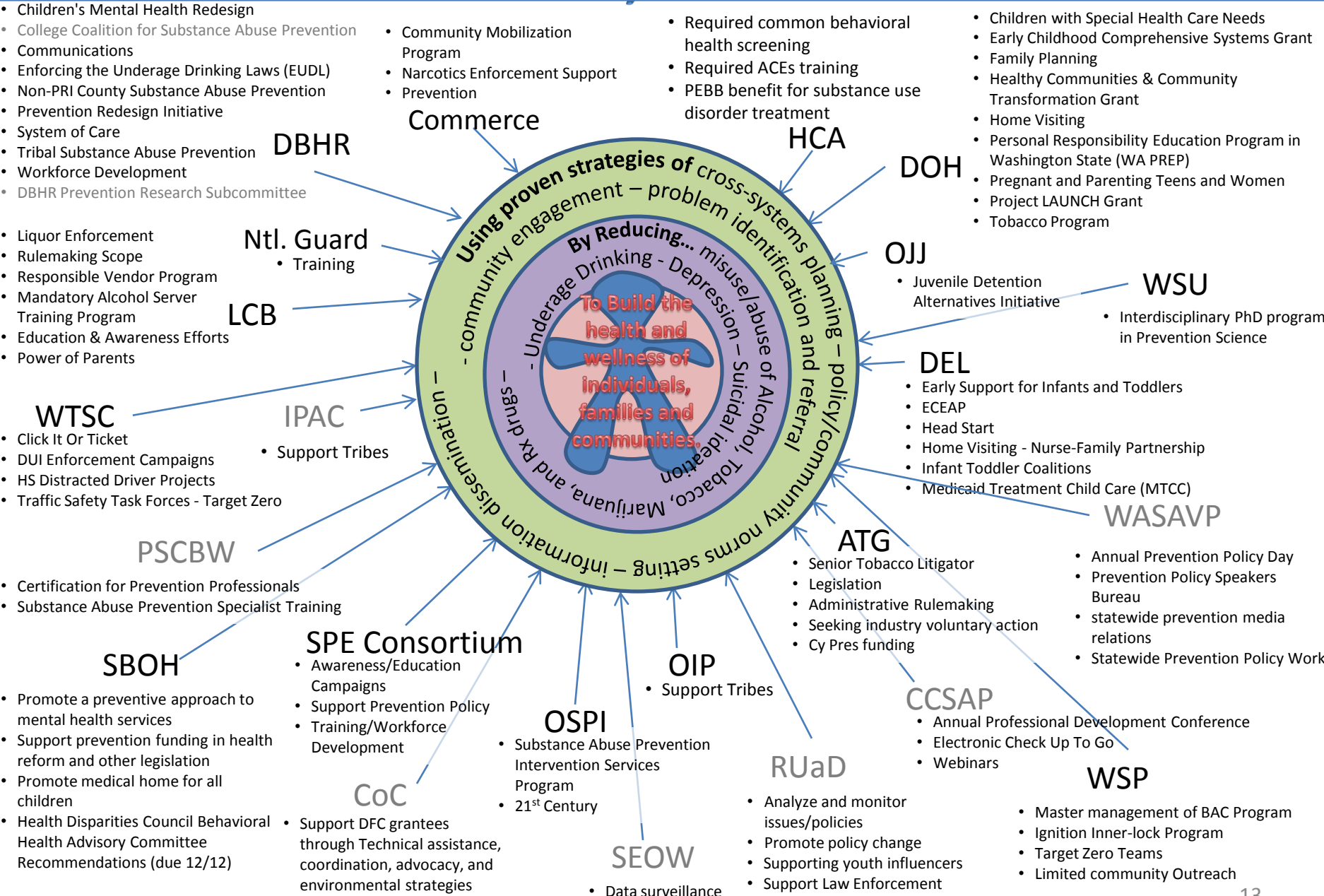
Department

Vision

Mission

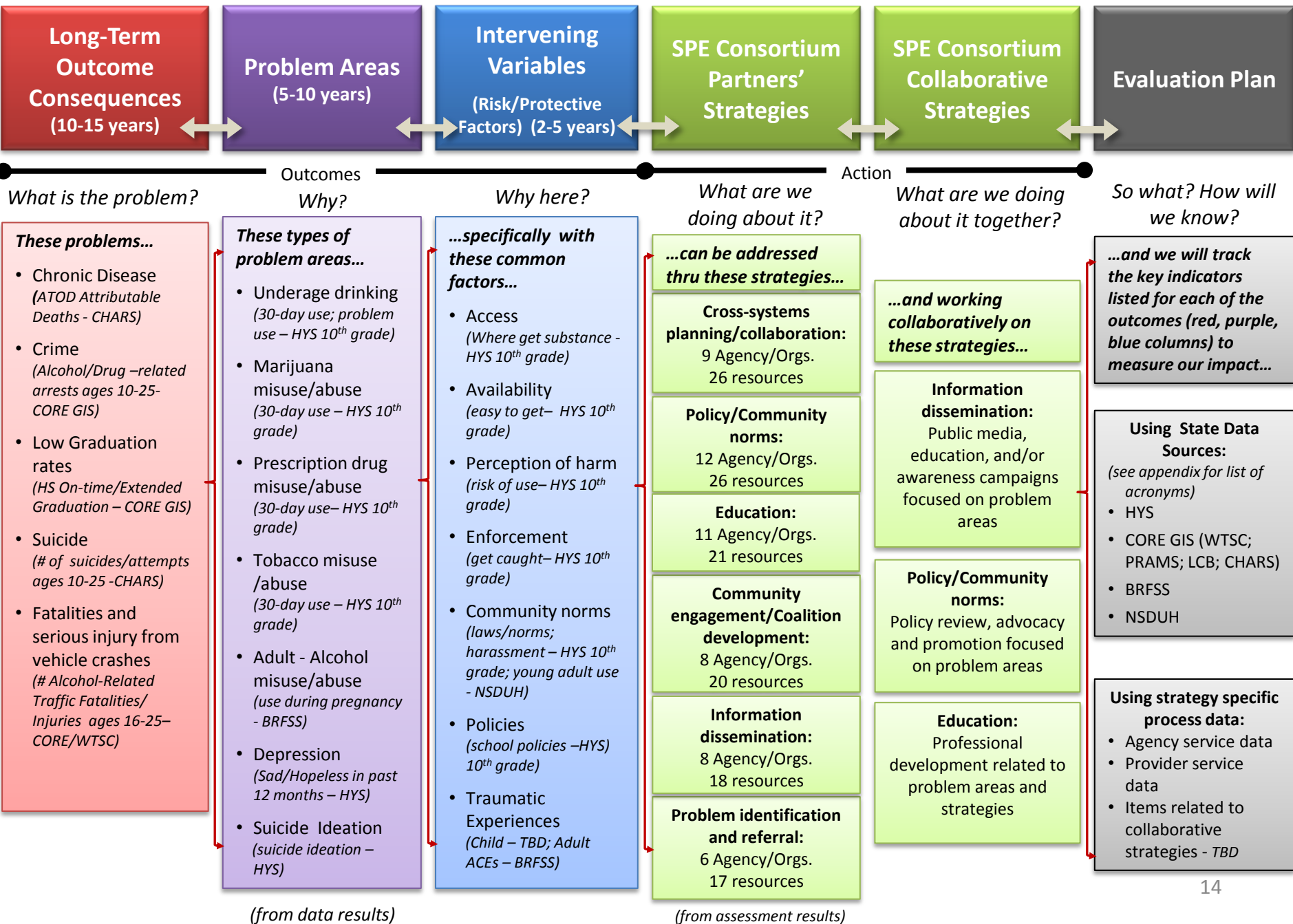
Core set of Values

WORKING TOGETHER; EACH DOING OUR PART

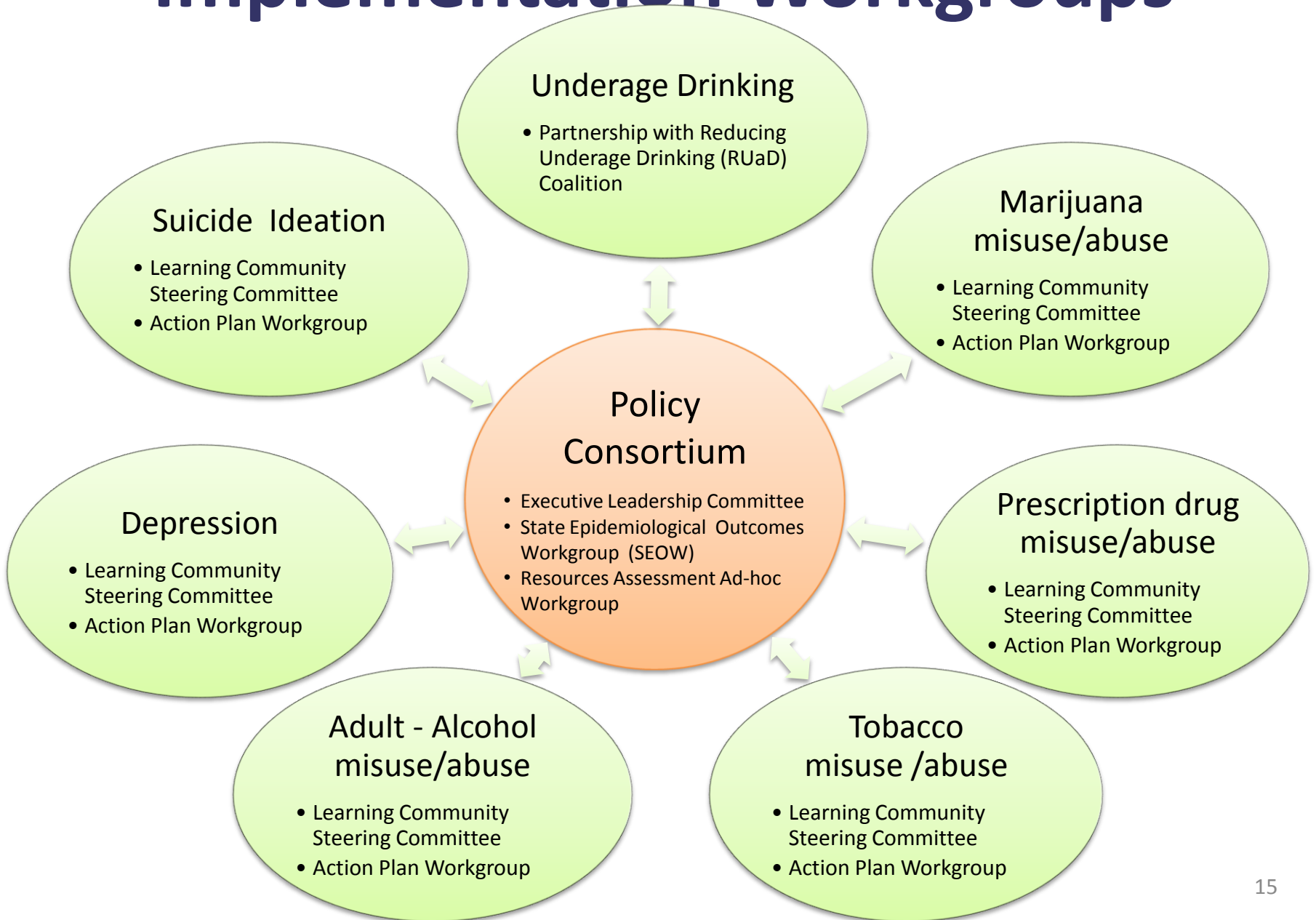


This diagram shows the state-level agencies/organizations and their specific programs that focus on substance abuse prevention and mental health promotion. As of July 2012

SPE Policy Consortium State Plan Logic Model



Implementation Workgroups



In Summary...

We will build the health and wellness of individuals, families, schools and communities where people can be as healthy as possible in a safe and nurturing environment...

By Addressing Intervening Variables and Risk/Protective Factors of...

Access/
Availability

Perception
of harm

Enforcement

Community
norms

Policies

Traumatic
Experiences

Using Strategies of...

Cross-systems
planning/
collaboration

Policy/
Community
norms

Community
engagement/
Coalition
development

Information
dissemination

Problem
identification
and referral

Education

We affect community and family outcomes, which lead to reduction of...

Underage
drinking

Marijuana
misuse/
abuse

Prescription
drug
misuse/
abuse

Tobacco
misuse/
abuse

Adult -
Alcohol
misuse/
abuse

Depression

Suicide
Ideation