



## County Community Risk Profile: Spokane County

\* The alcohol consumption risk score was calculated from prevalence and frequency of underage drinking. The consequence risk score is calculated from school performance, youth delinquency, and mental health indicators.

A Risk Category Rank of "Very High" indicates the referenced School District Risk Score was in the top 10% of School Districts in the risk Category.

A Risk Category Rank of "High" indicates the referenced School District Risk Score was in the top 25% of School Districts in the risk Category.

A Risk Category Rank of "Average" indicates the referenced School District Risk Score was between 25% and 75% of School Districts in the risk Category.

A Risk Category Rank of "Low" indicates the referenced School District Risk Score was in the bottom 25% of School Districts in the risk Category.

A Risk Category Rank of "Very Low" indicates the referenced School District Risk Score was in the bottom 10% of School Districts in the risk Category.

### **Review Considerations**

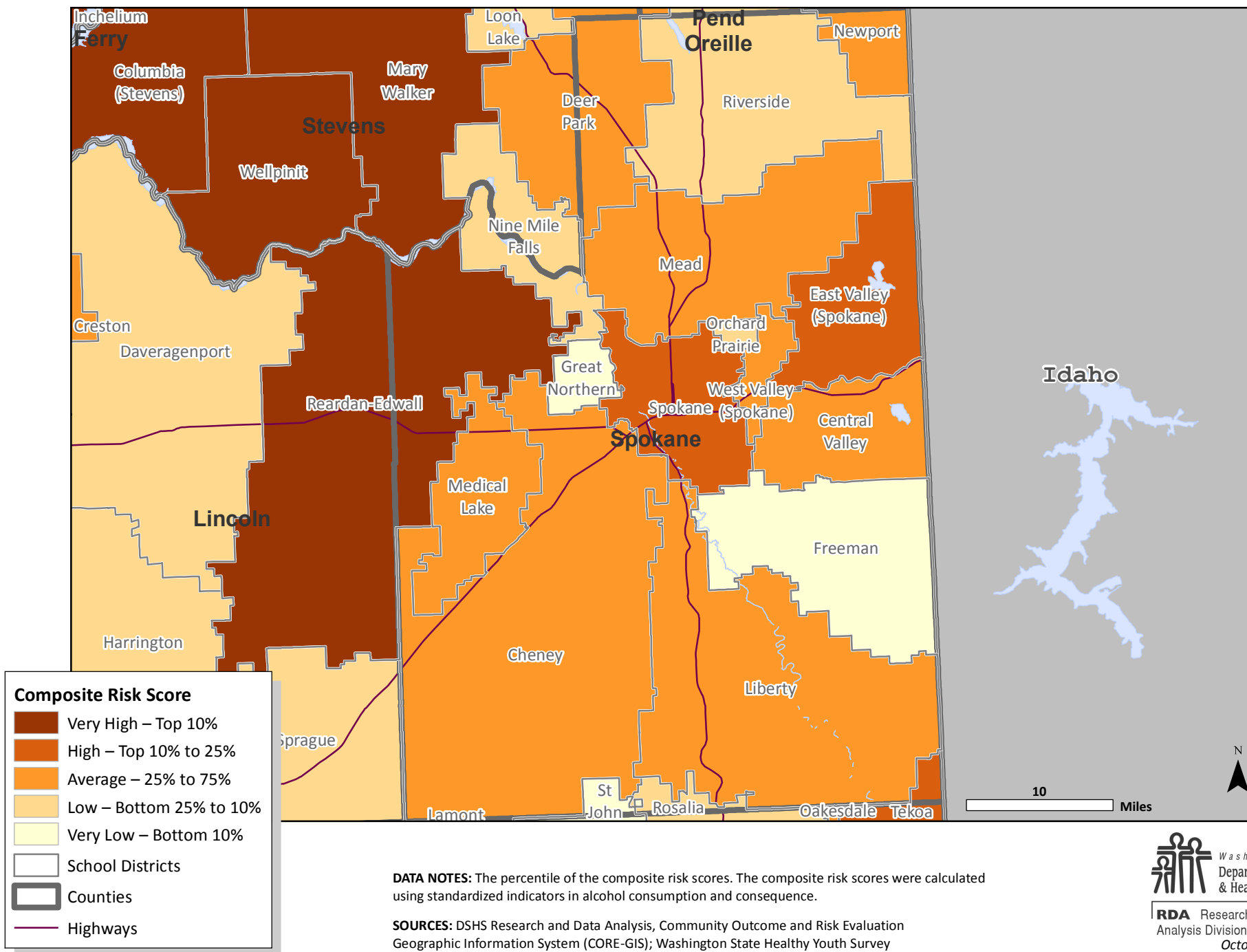
1) To get a overall sense of risk severity for both consumption and consequence, examine the 'Risk Percentile'. It reflects what % of School District had a Risk Score LOWER than the referenced School District.

2) To ensure that the risk score is meaningful, examine the 'Indicators with data' column. Risk scores based on few indicators should be interpreted with caution. In total, 26 indicators were used.

3) To consider other contextual information, examine the 'Population: Age 0-17', "economic deprivation" indicator, and the "troubled family" indicator. Note the "Population 0-17 year olds" value will be greater than district enrollment as it accounts for kids not in school as well as those in private schools.

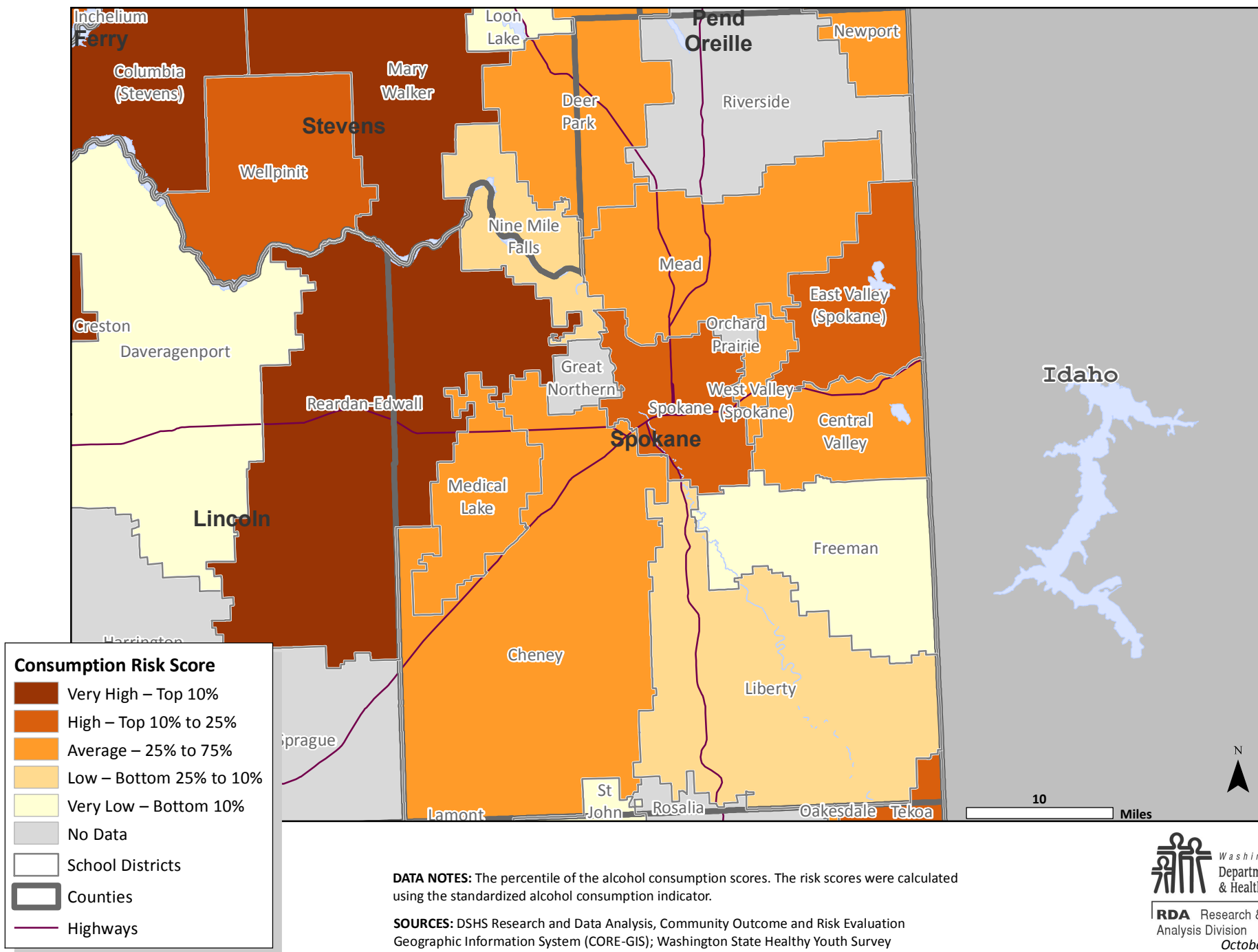
# Composite Risk Score

## by School District, Spokane County, 2010



# Consumption Risk Score

## by School District, Spokane County, 2010



# Consequence Risk Score

## by School District, Spokane County, 2010

