

Data and Assessment for State Prevention Enhancement Policy Consortium

Prepared by
SEOW/SPE Data Workgroup
March/April 2012



One

Department

Vision

Mission

Core set of Values

Data Workgroup Process

- Workgroup partners:
 - DOH; WSTSC; HCA; OSPI; DEL; DBHR
- Initial criteria identified and data gathered
- Reviewed and refined data
 - Indicators/data from partners;
 - Patterns of use
 - Not just targeting substances (age group, race/ethnicity)
- Current presentation



One

Department

Vision

Mission

Core set of Values

Needs Assessment Matrix

	Alcohol	Tobacco	Marijuana	Meth	Prescription Drug
Rates					
Trends					
Economic Impacts					
Social Impact					
Other criteria?					
OVERALL					



One

Department
Vision
Mission
Core set of Values

Rates

- Survey-based rates (not population-based rates) for self-reported substance use
 - HYS
 - NSDUH
 - BRFSS



One

Department

Vision

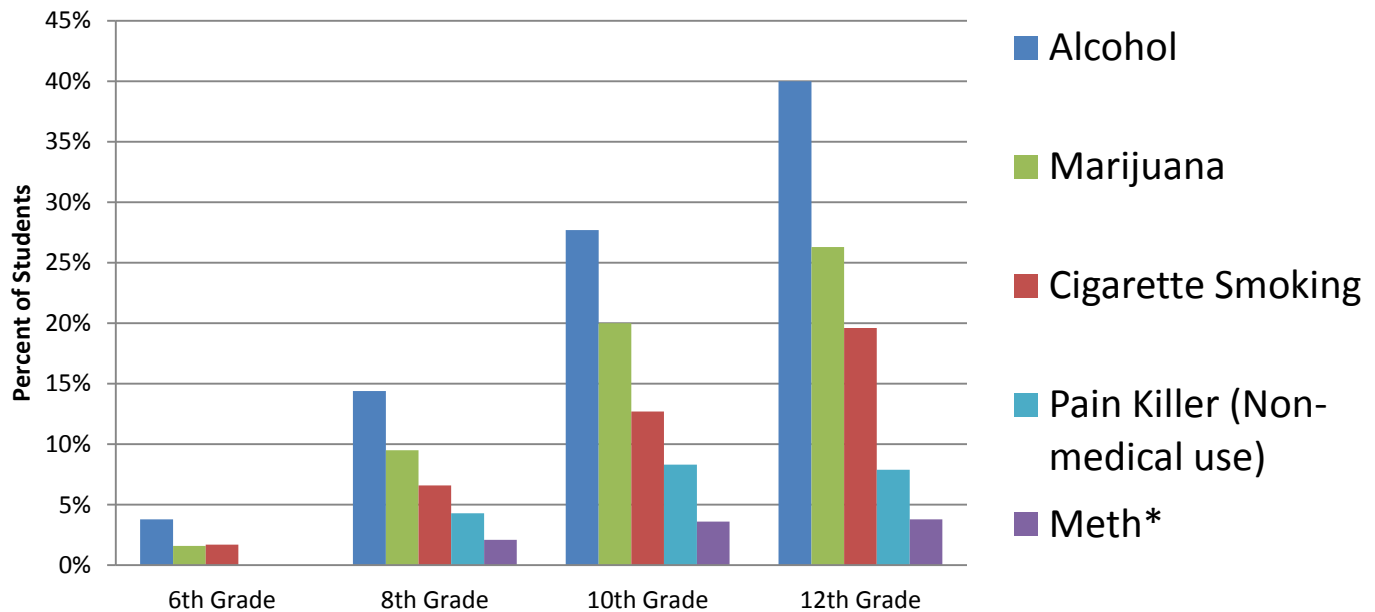
Mission

Core set of Values

Rates: By Youth Age Groups

2010 Rates

Youth substance use (in past 30 days)



Source: Healthy Youth Survey 2010/2008

*2008 rates. Data not available for 6 graders.



One

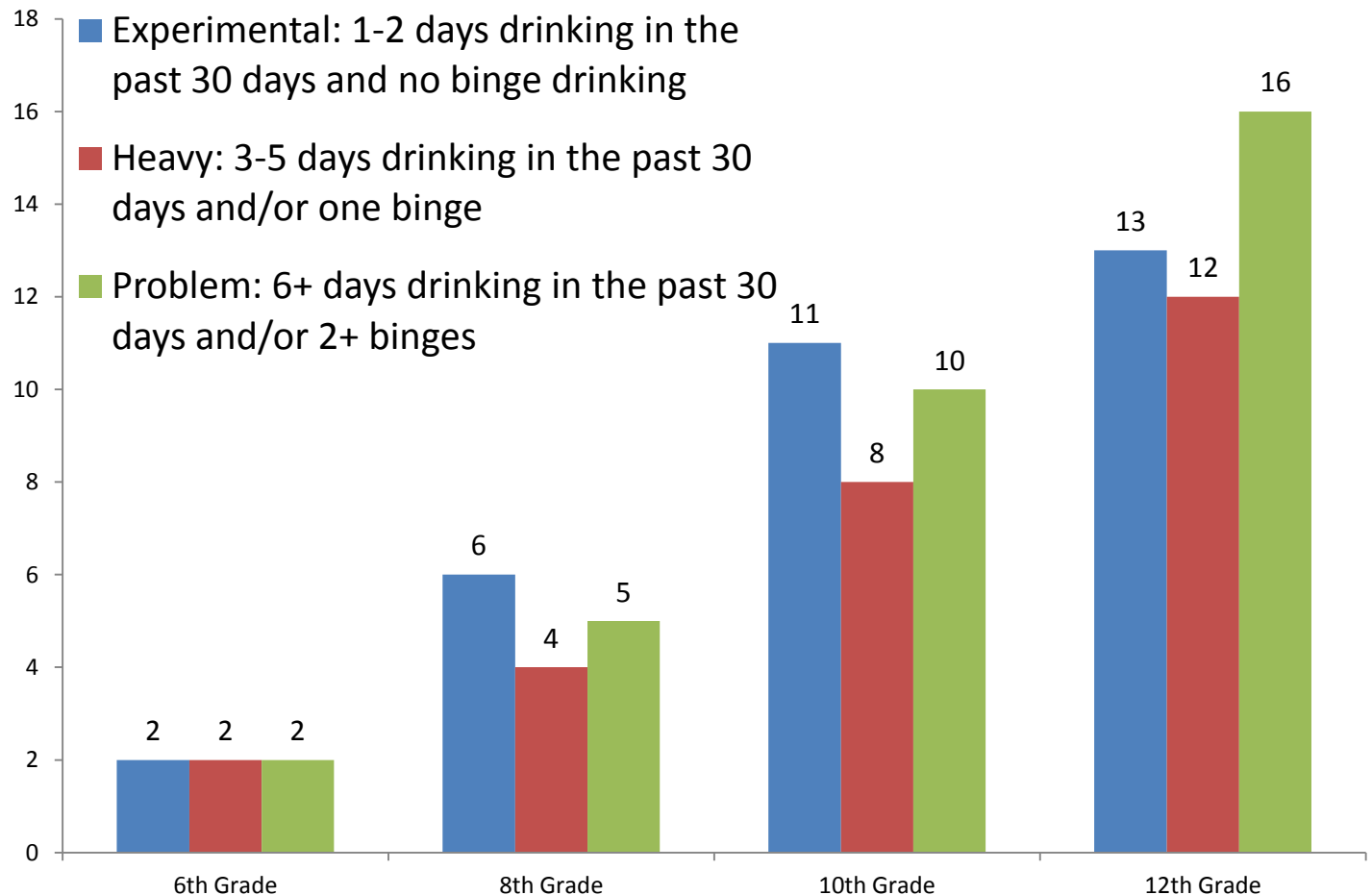
Department

Vision

Mission

Core set of Values

Alcohol Rates: By Youth Age Groups



One

Department

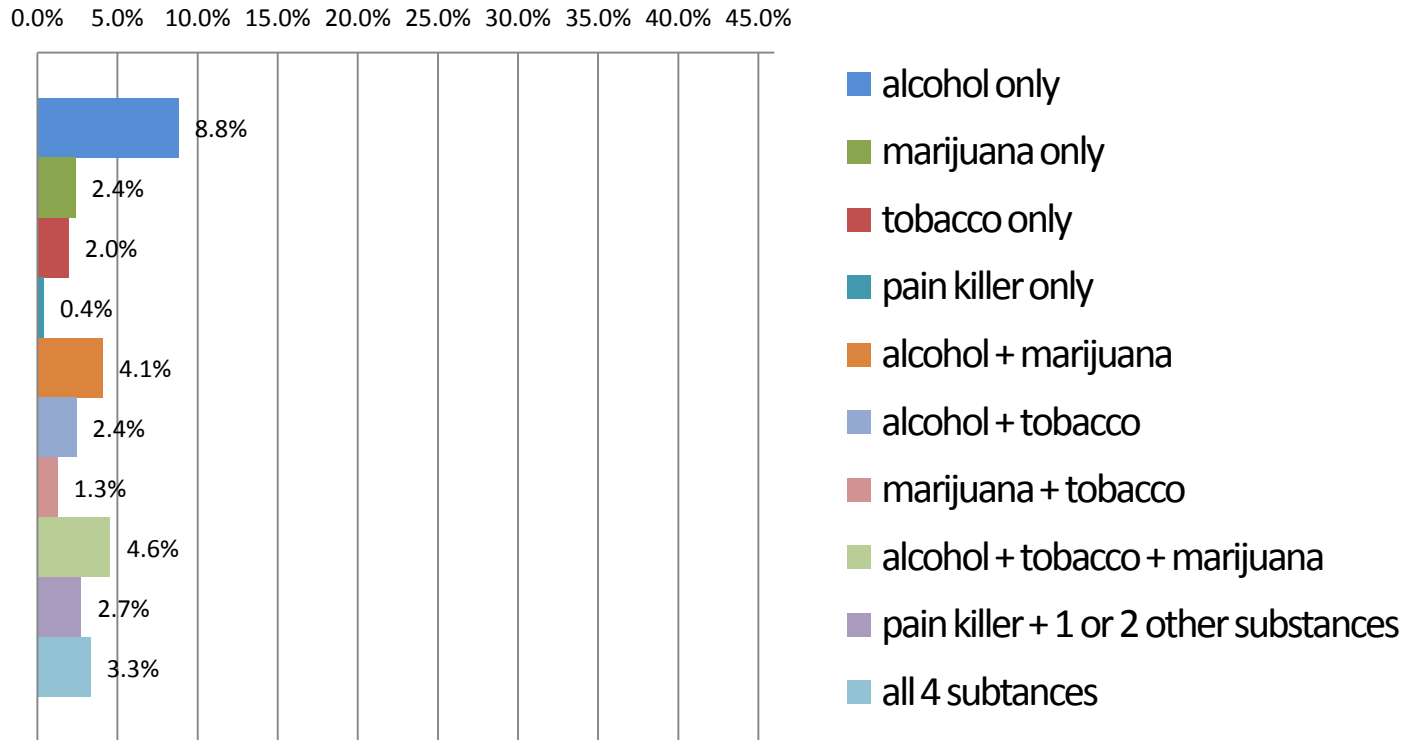
Vision

Mission

Core set of Values

Rates: Youth

Patterns of Substance Use (Youth)



Source: Healthy Youth Survey 2010

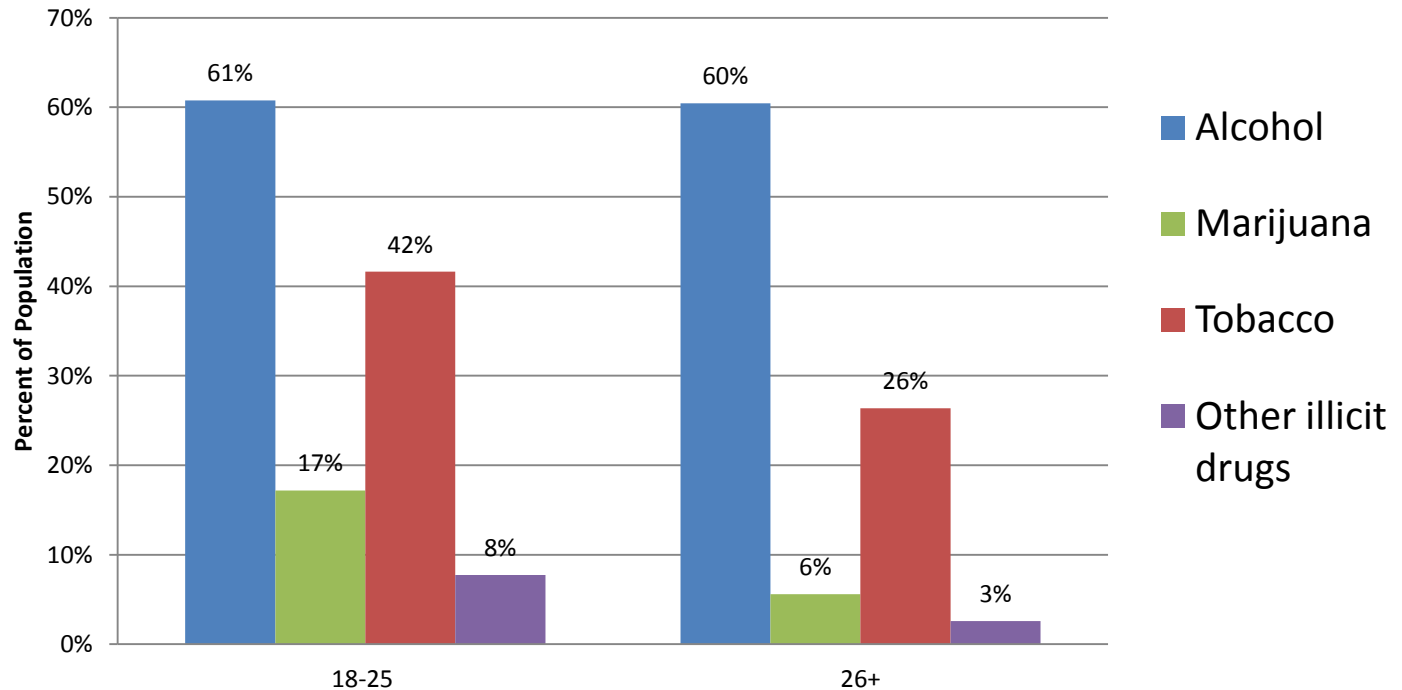


One

Department
Vision
Mission
Core set of Values

Rates: By Adult Age Groups

2008-2009 Substance use during past 30 days



Source: National Survey on Drug Use and Health

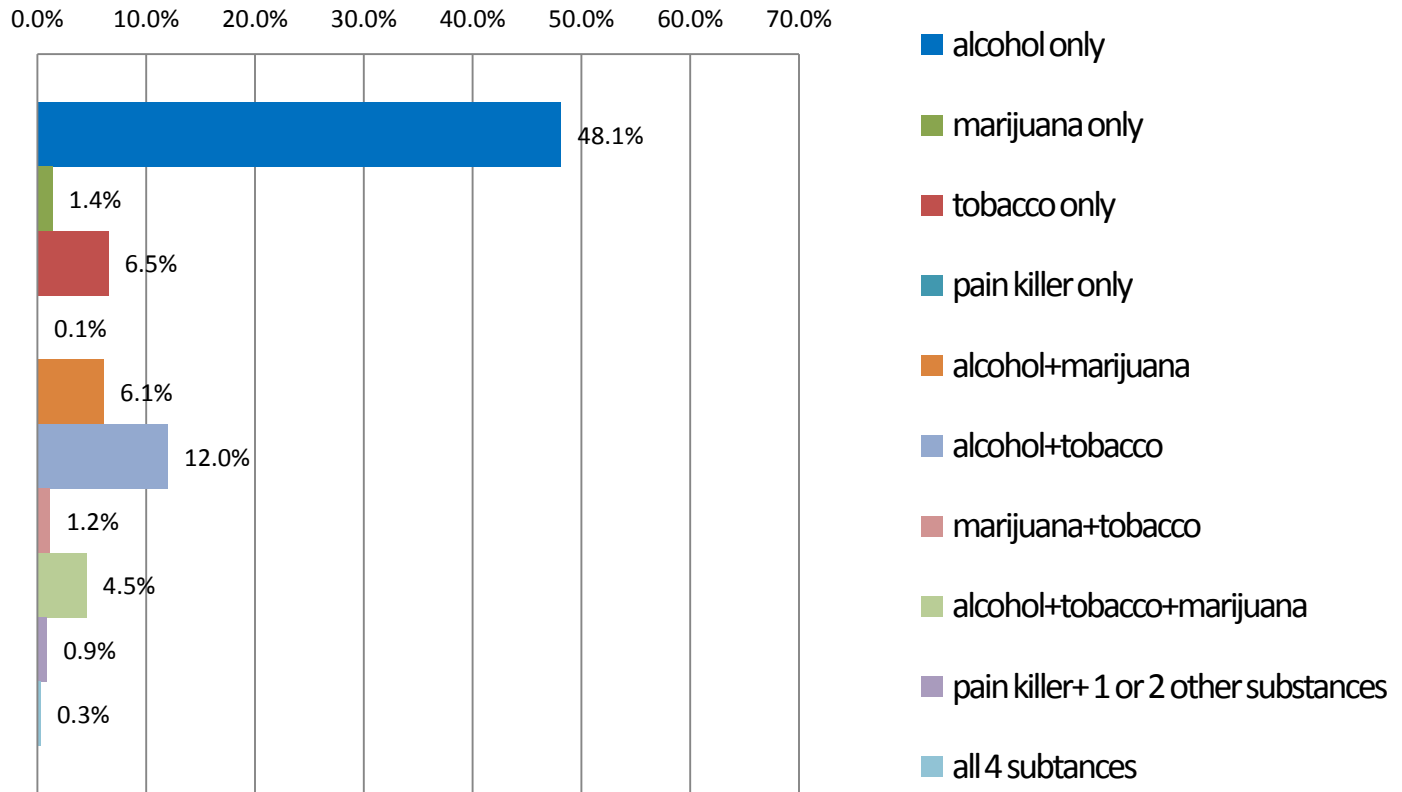


One

Department
Vision
Mission
Core set of Values

Rates: Adults

Patterns of Substance Use (Adult)



Source: Behavioral Risk Factors Surveillance System (BRFSS). Only respondents who answered questions regarding all four types of substances are included.

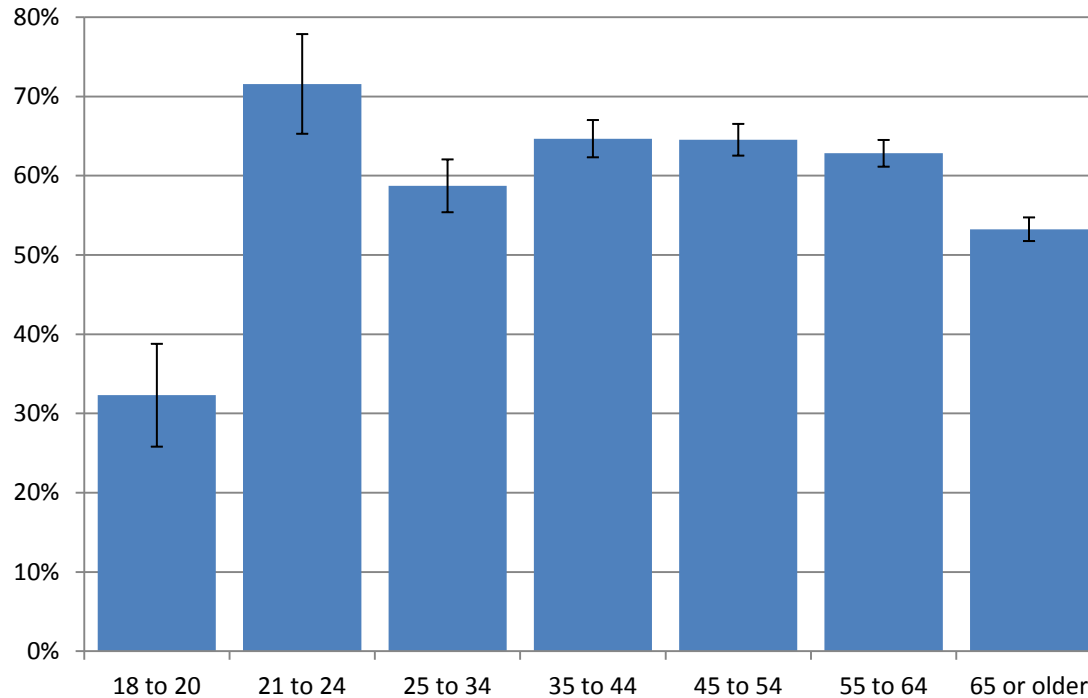


One

Department
Vision
Mission
Core set of Values

Alcohol Rates: By Adult Age Group

Had alcohol in past 30 days by age group



Source: Behavioral Risk Factors Surveillance System (BRFSS), 2010

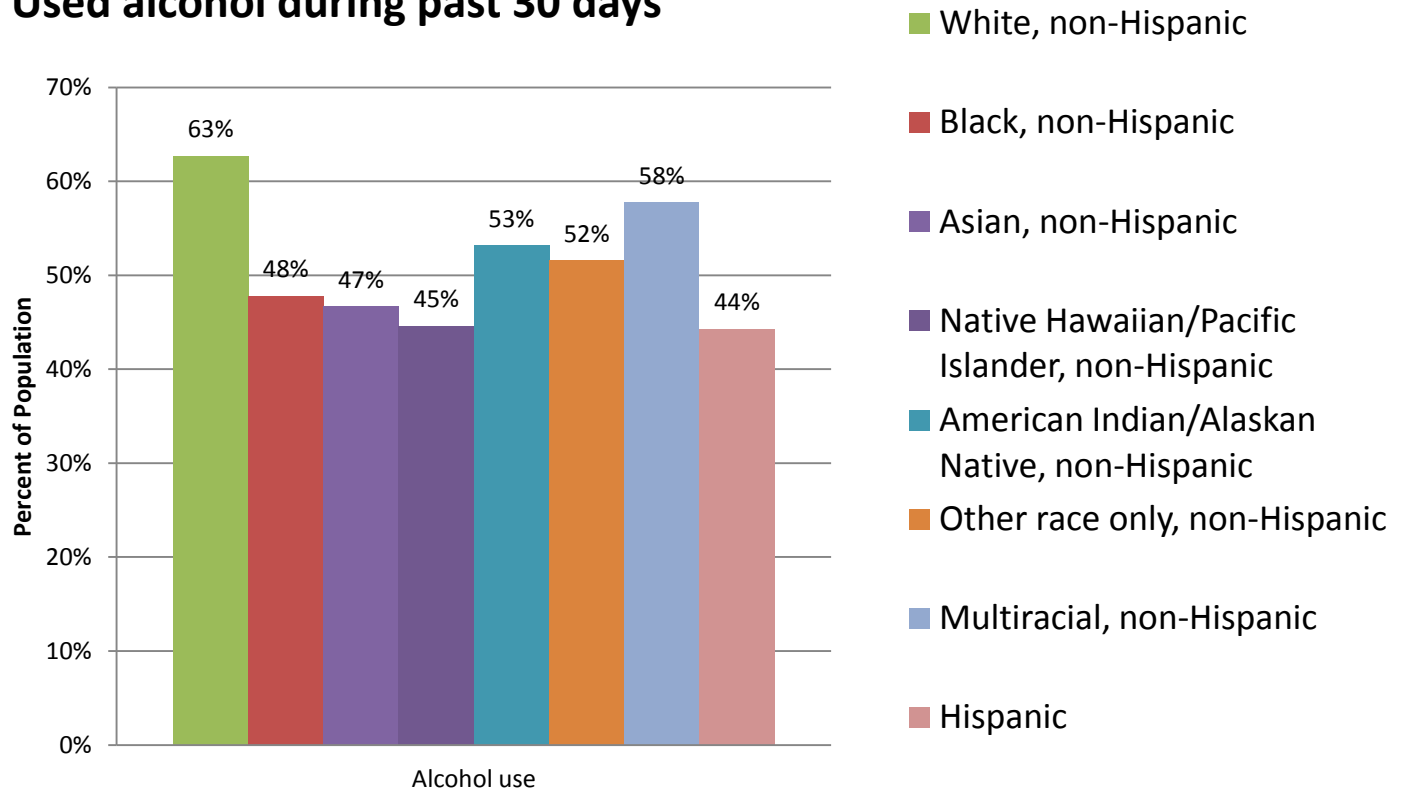


One

Department
Vision
Mission
Core set of Values

Alcohol Rates: By Race/Ethnicity

Used alcohol during past 30 days



Source: Behavioral Risk Factors Surveillance System (BRFSS)

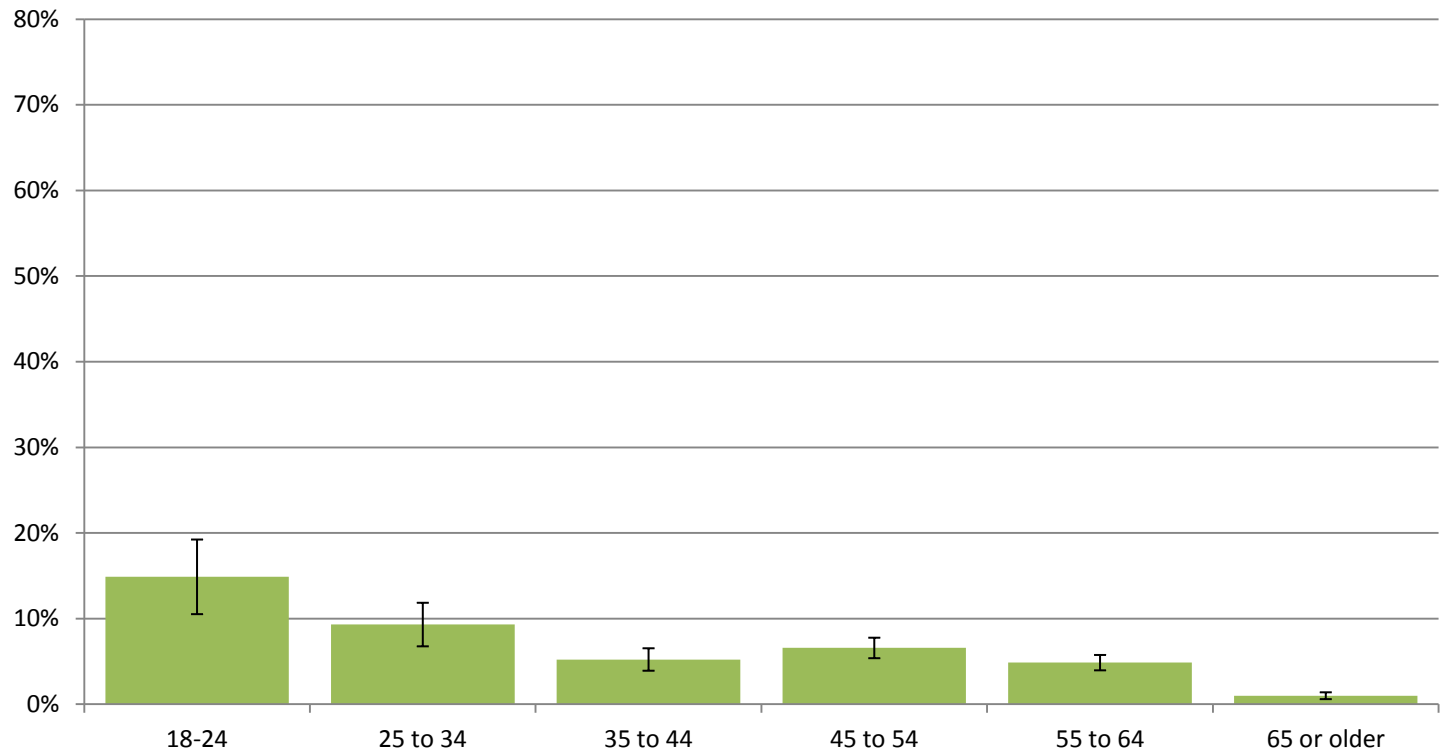


One

Department
Vision
Mission
Core set of Values

Marijuana Rates: By Adult Age Group

Used marijuana in past 30 days, by adult age group



Source: Behavioral Risk Factors Surveillance System (BRFSS), 2010.

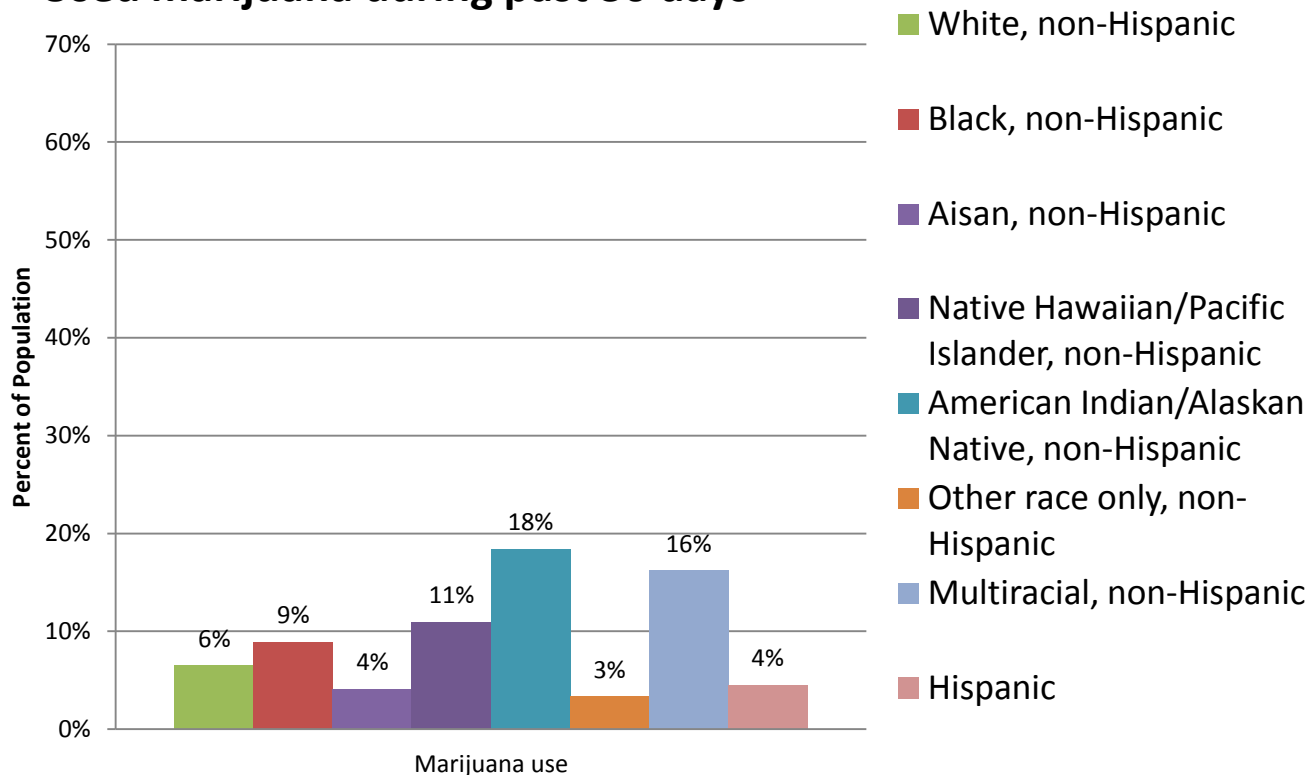


One

Department
Vision
Mission
Core set of Values

Marijuana Rates: By Race/Ethnicity

Used marijuana during past 30 days



Source: Behavioral Risk Factors Surveillance System (BRFSS)

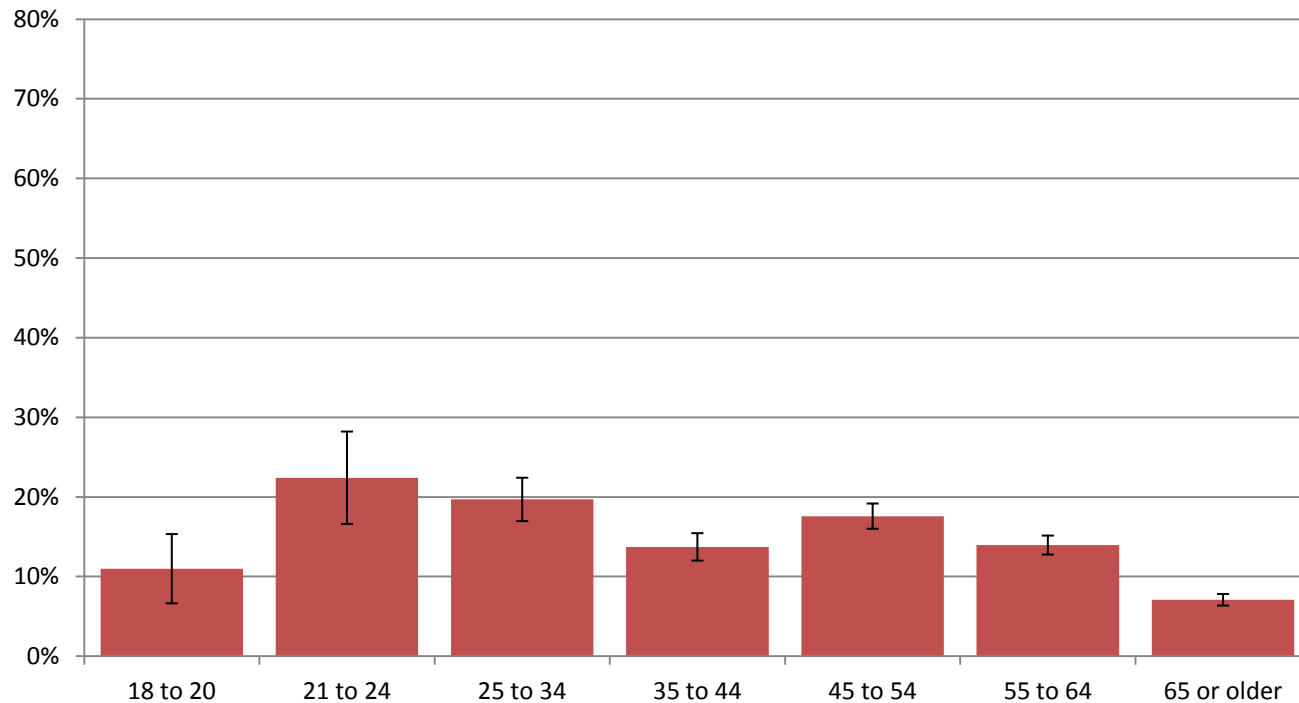


One

Department
Vision
Mission
Core set of Values

Cigarette Smoking Rates: By Adult Age Group

Current Smoker By Age Group



Source: Behavioral Risk Factors Surveillance System (BRFSS), 2010

Note: BRFSS defines current smoker as someone who has smoked at least 100 cigarettes lifetime and who is currently smoking.



One

Department

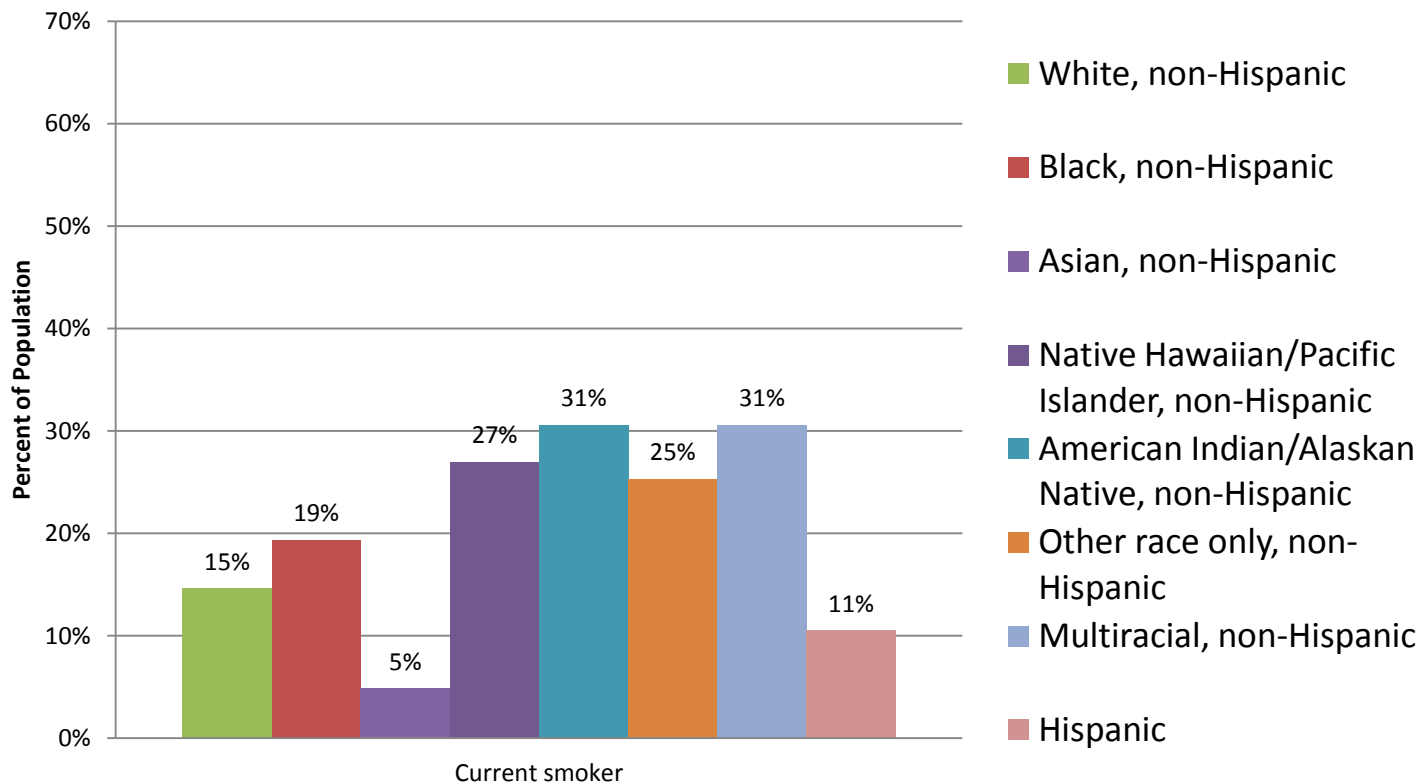
Vision

Mission

Core set of Values

Cigarette Smoking Rates: By Race/Ethnicity

Currently smoking cigarettes some days or everyday



Source: Behavioral Risk Factors Surveillance System (BRFSS)

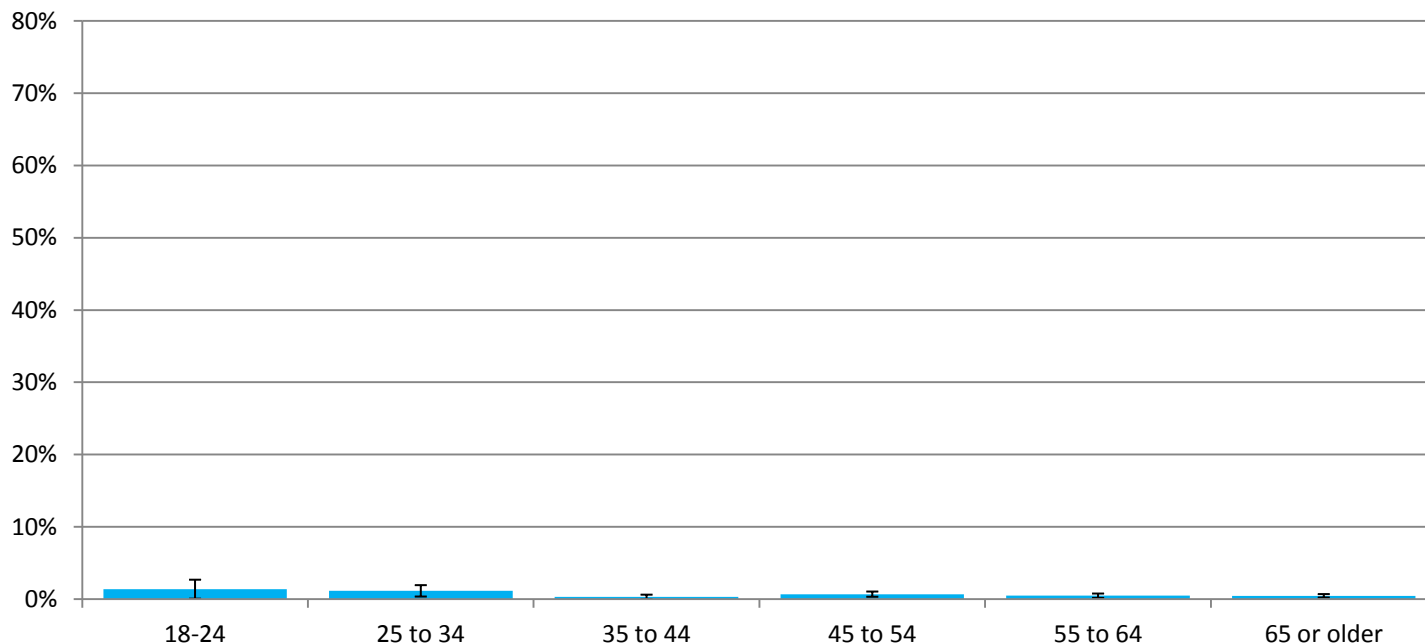


One

Department
Vision
Mission
Core set of Values

Non-medical Use of Pain Killer: By Adult Age Group

Used pain killers to get high in past 30 days, by adult age group



Source: Behavioral Risk Factors Surveillance System (BRFSS), 2010.

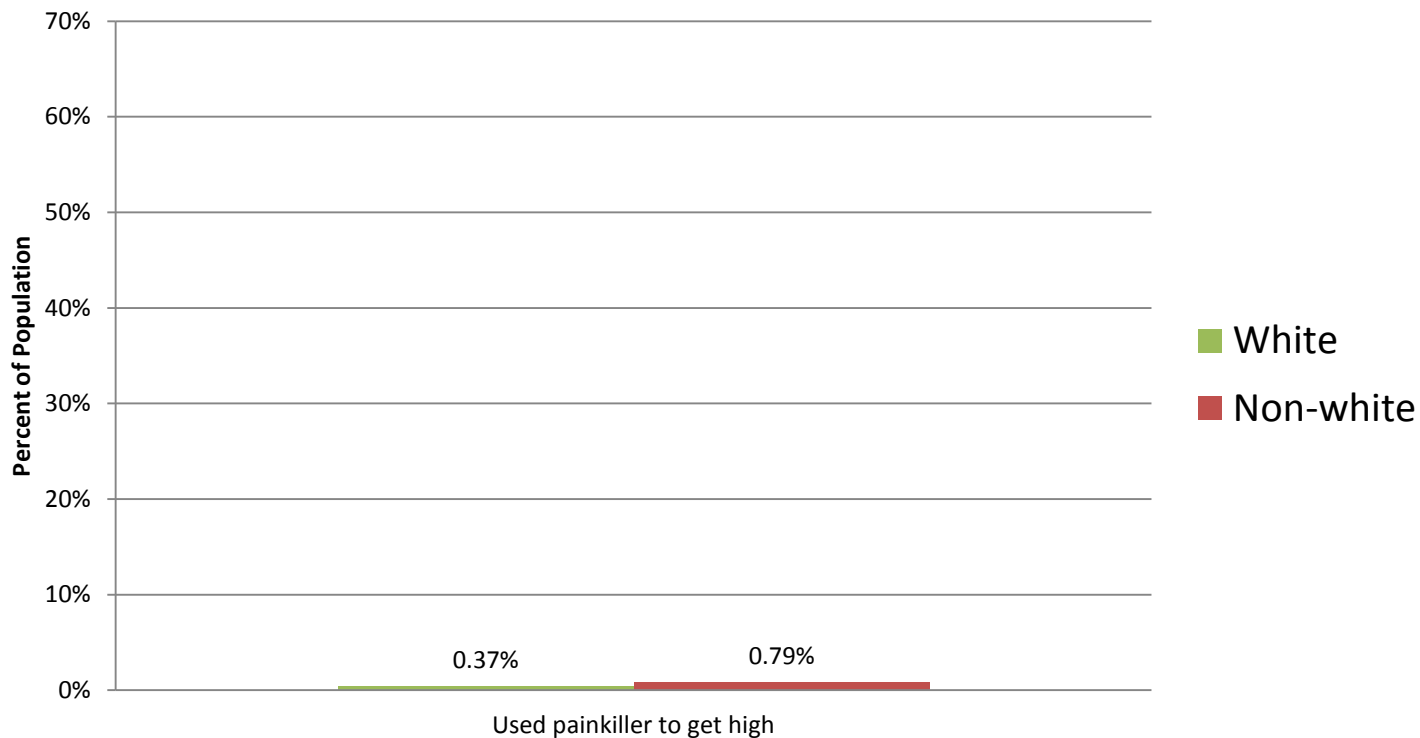


One

Department
Vision
Mission
Core set of Values

Pain Killer Rates: By Race/Ethnicity

Used pain killer to get high in past 30 days



Source: Behavioral Risk Factors Surveillance System (BRFSS)

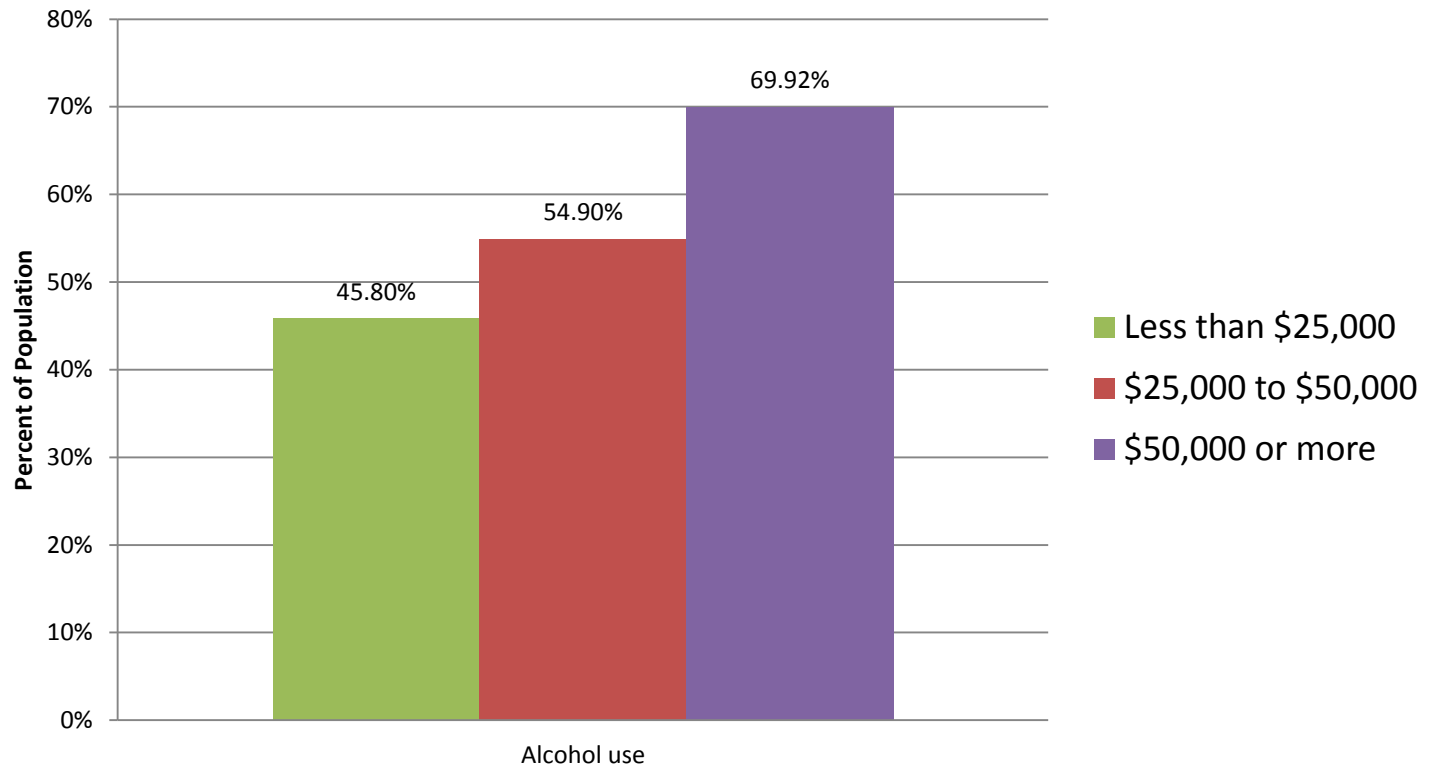


One

Department
Vision
Mission
Core set of Values

Alcohol Rates: By Income Group

Used alcohol during past 30 days



Source: Behavioral Risk Factors Surveillance System (BRFSS)



One

Department

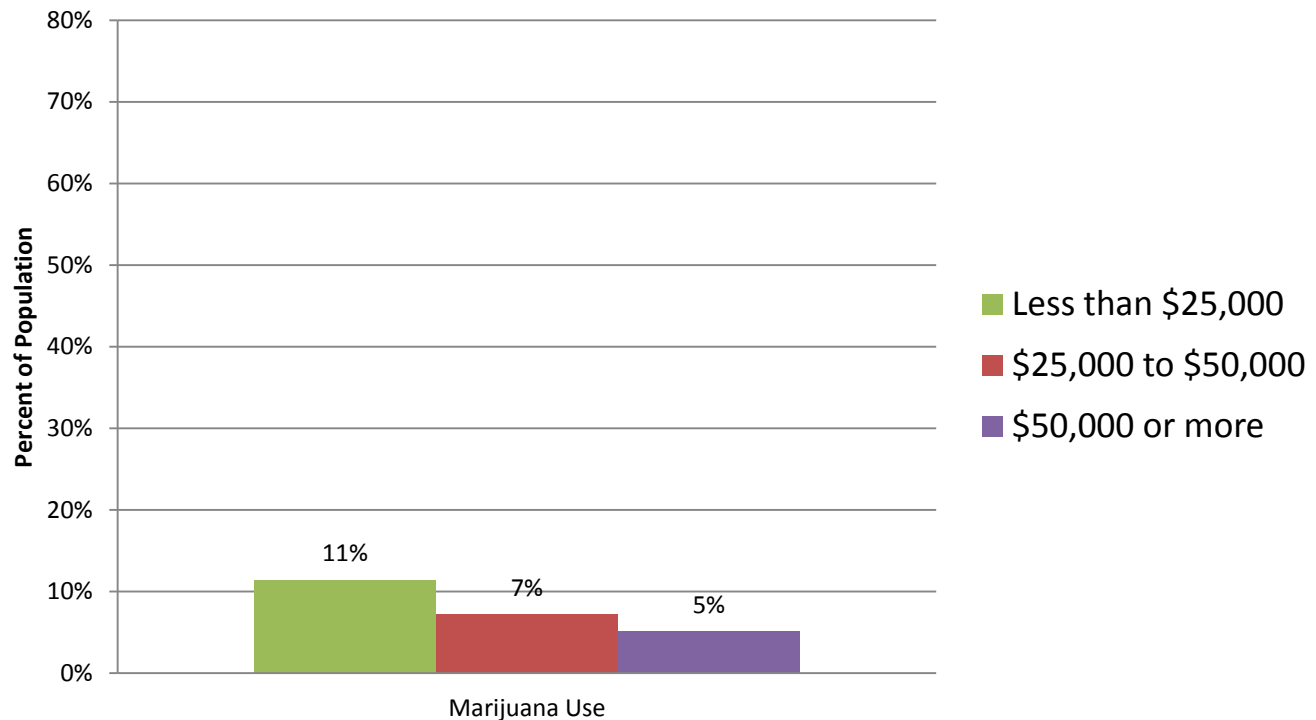
Vision

Mission

Core set of Values

Marijuana Rates: By Income Group

Used marijuana during past 30 days



Source: Behavioral Risk Factors Surveillance System (BRFSS)



One

Department

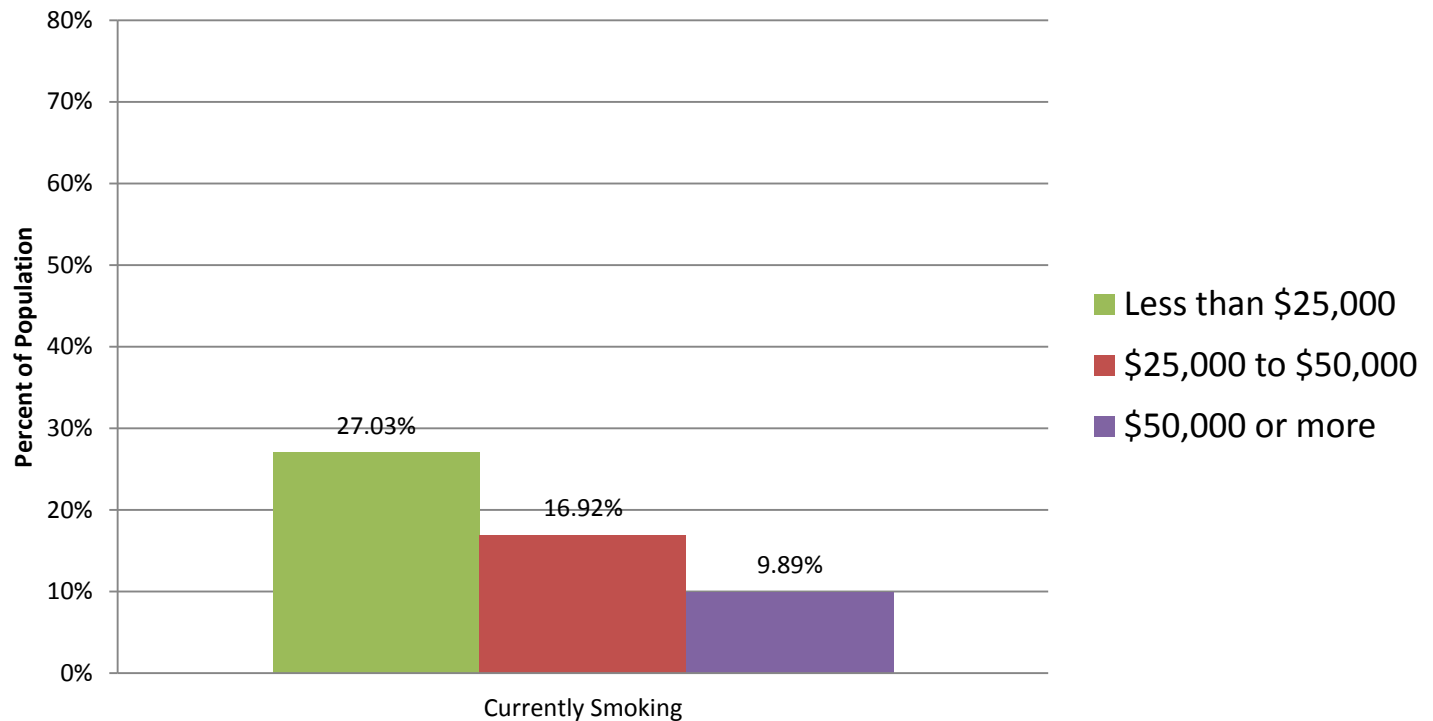
Vision

Mission

Core set of Values

Cigarette Rates: By Income Group

Currently smoking cigarettes some days or everyday



Source: Behavioral Risk Factors Surveillance System (BRFSS)



One

Department

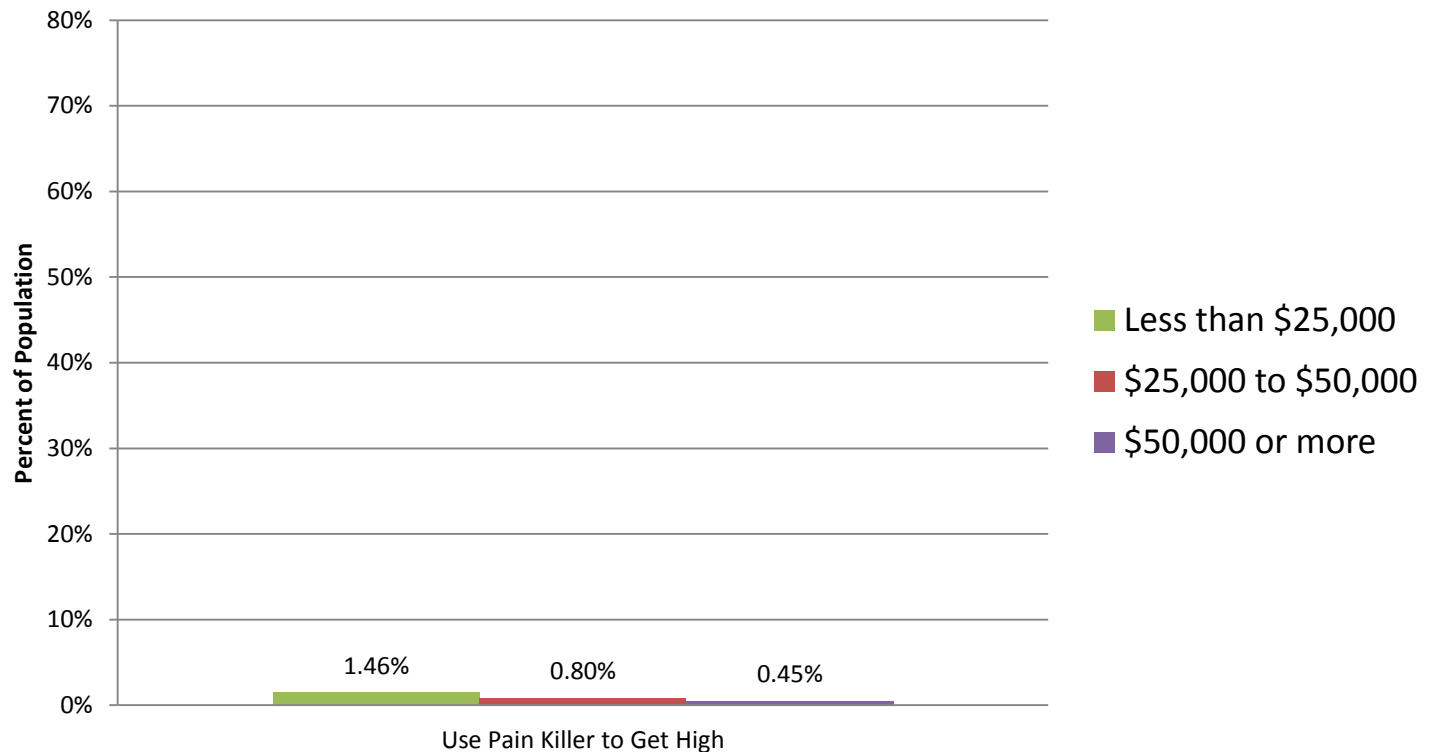
Vision

Mission

Core set of Values

Pain Killer Rates: By Income Group

Used pain killer to get high in past 30 days



Source: Behavioral Risk Factors Surveillance System (BRFSS)



One

Department

Vision

Mission

Core set of Values

Trends

Recent trend lines

Also see historical trends (handout)



One

Department

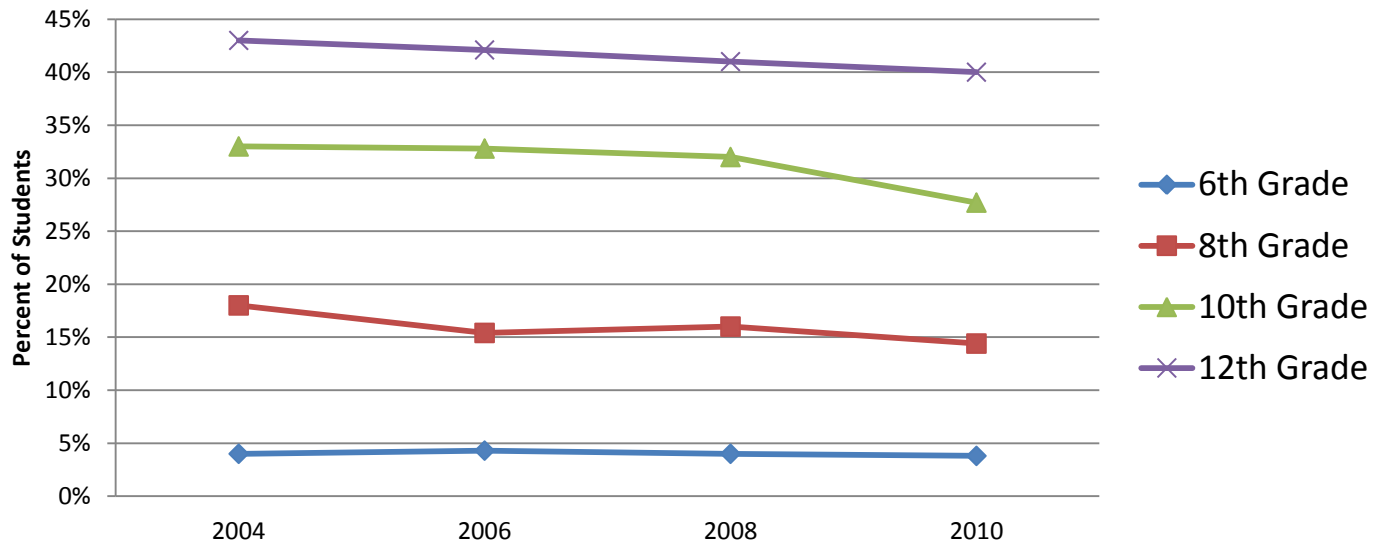
Vision

Mission

Core set of Values

Alcohol Trends: By Youth Age Groups

Had alcohol during past 30 days (Youth)



	2004	2006	2008	2010
6th Grade	4%+/-1	4%+/-1	4%+/-1	4%+/-0
8th Grade	18%+/-2	15%+/-2	16%+/-2	14%+/-1
10th Grade	33%+/-2	33%+/-2	32%+/-2	28%+/-2
12th Grade	43%+/-2	42%+/-2	41%+/-3	40%+/-2

Source: Healthy Youth Survey

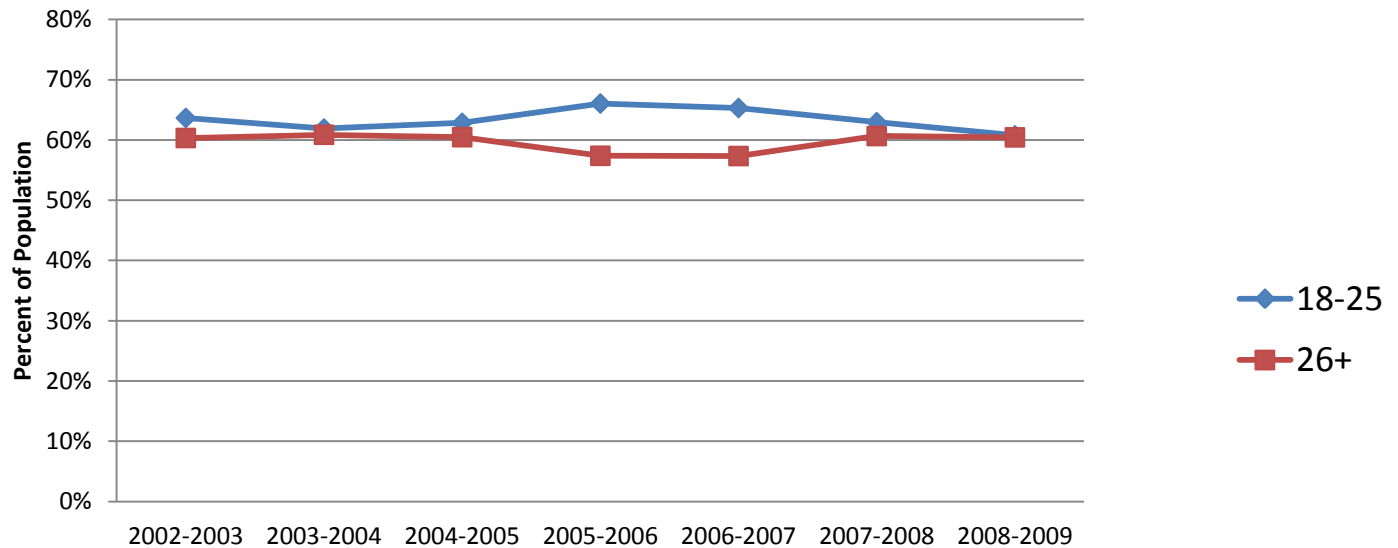


One

Department
Vision
Mission
Core set of Values

Alcohol Trends: By Adult Age Group

Had alcohol in the past month (Adults)



Source: National Survey on Drug Use and Health



One

Department

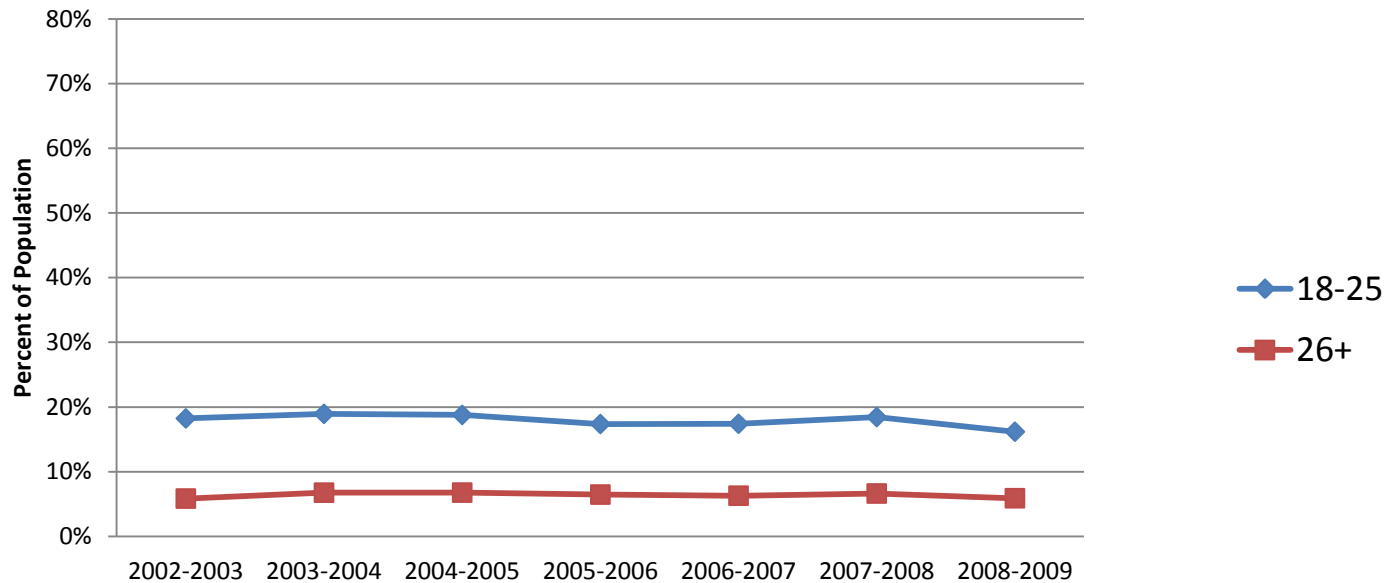
Vision

Mission

Core set of Values

Alcohol Dependence or Abuse Trends: By Adult Age Group

Alcohol dependence or abuse during past year (Adults)



Source: National Survey on Drug Use and Health



One

Department

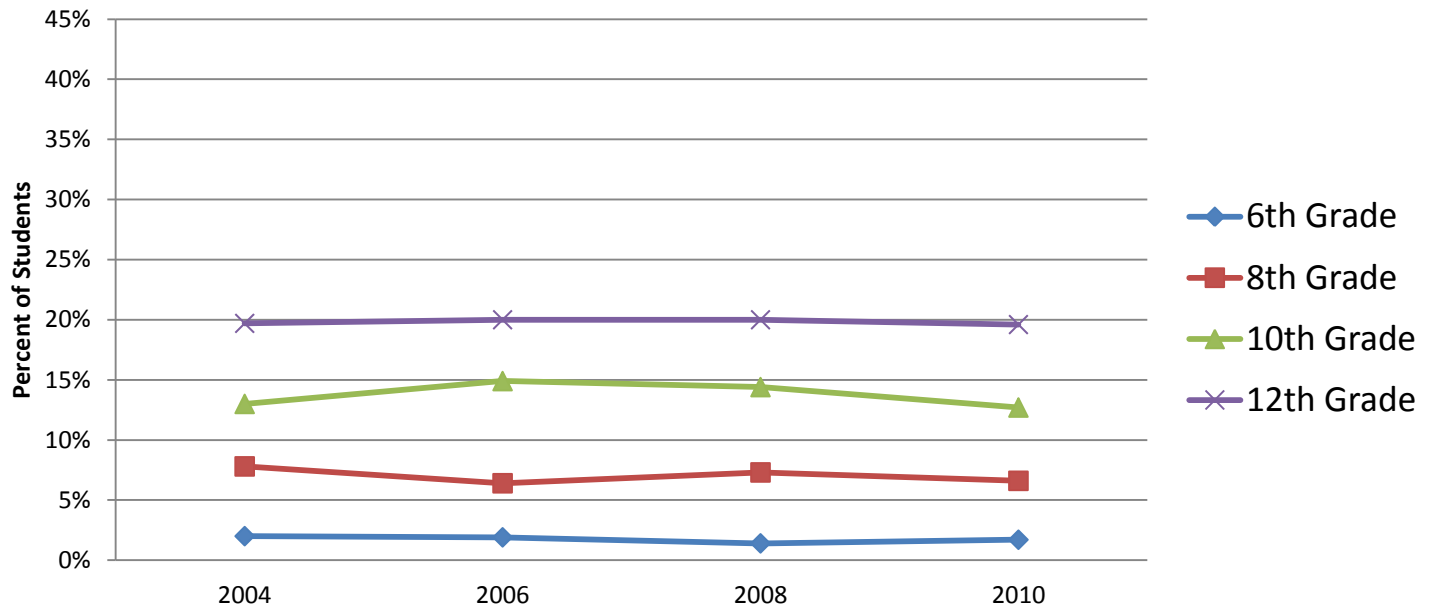
Vision

Mission

Core set of Values

Tobacco Trends: By Youth Age Groups

Smoked cigarettes during past 30 days (Youth)



	2004	2006	2008	2010
6th Grade	2.0%+/-0.4	1.9%+/-0.4	1.4%+/-0.3	1.7%+/-0.4
8th Grade	7.8%+/-1.0	6.4%+/-1.2	7.3%+/-1.0	6.6%+/-0.9
10th Grade	13.0%+/-1.4	14.9%+/-1.4	14.4%+/-1.6	12.7%+/-1.7
12th Grade	19.7%+/-2.2	20.0%+/-1.8	20.0%+/-2.7	19.6%+/-2.4

Source: Healthy Youth Survey

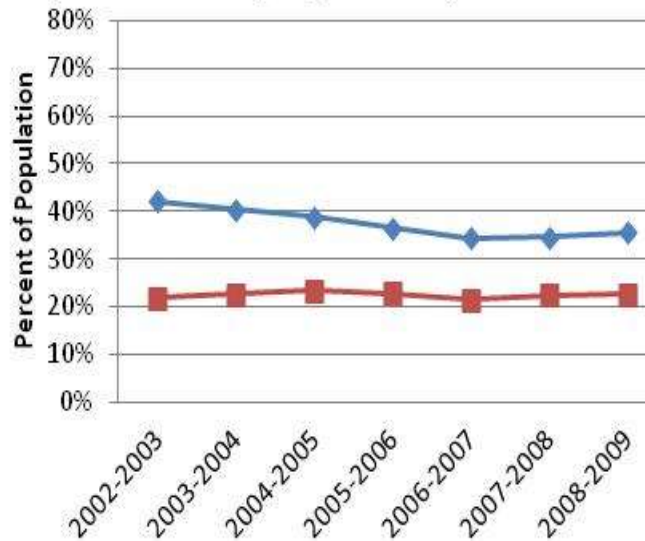


One

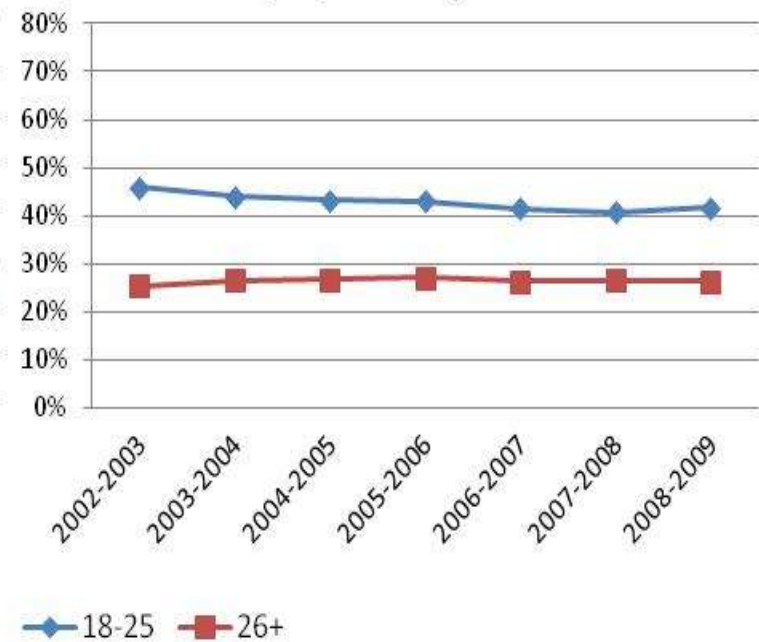
Department
Vision
Mission
Core set of Values

Tobacco Trends: By Adult Age Group

Smoked cigarettes during
past 30 days (Adults) *



Used tobacco products during
past 30 days (Adults)



Source: National Survey on Drug Use and Health

Notes: * Difference in cigarette smoking between 2002/2003 and 2008/2009 statistically significant for the 18-25 age group.

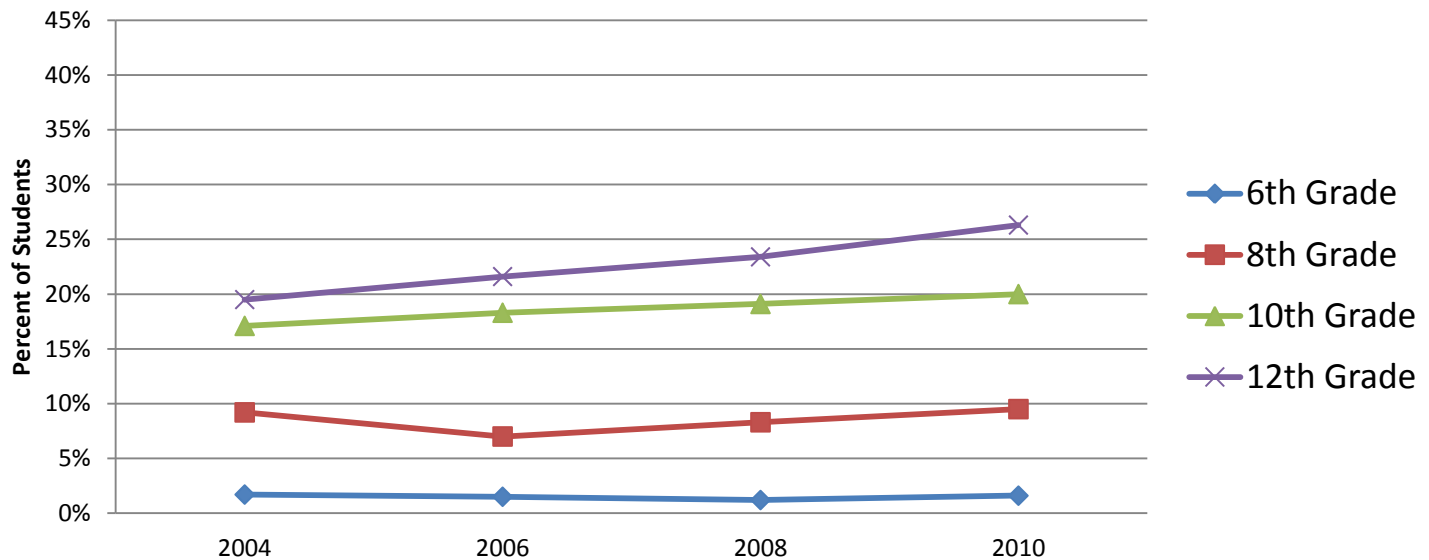


One

Department
Vision
Mission
Core set of Values

Marijuana Trends: By Youth Age Groups

Used marijuana during past 30 days (Youth)



	2004	2006	2008	2010
6th Grade	1.7%+/-0.4	1.5%+/-0.4	1.2%+/-0.3	1.6%+/-0.4
8th Grade	9.2%+/-1.2	7.0%+/-1.2	8.3%+/-1.1	9.5%+/-1.1
10th Grade	17.1%+/-1.4	18.3%+/-1.4	19.1%+/-1.2	20.0%+/-1.8
12th Grade	19.5%+/-2.2	21.6%+/-2.0	23.4%+/-2.3	26.3%+/-2.0

Source: Healthy Youth Survey

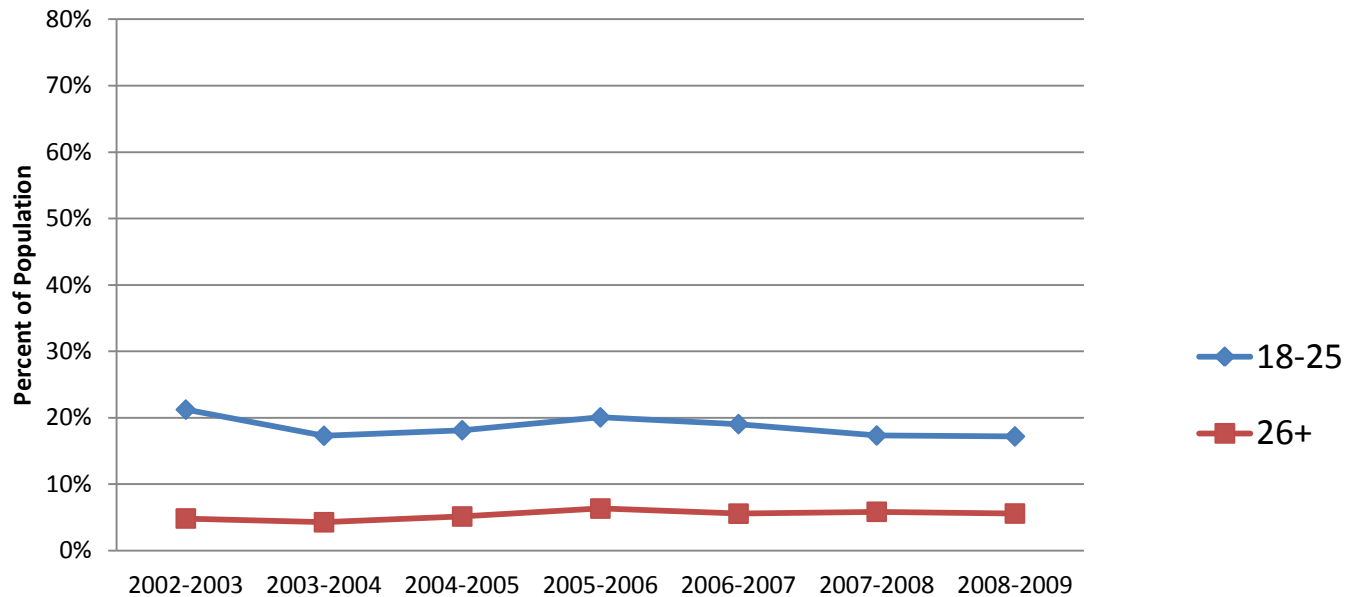


One

Department
Vision
Mission
Core set of Values

Marijuana Trends: By Adult Age Group

Used marijuana in the past month (Adults)



Source: National Survey on Drug Use and Health



One

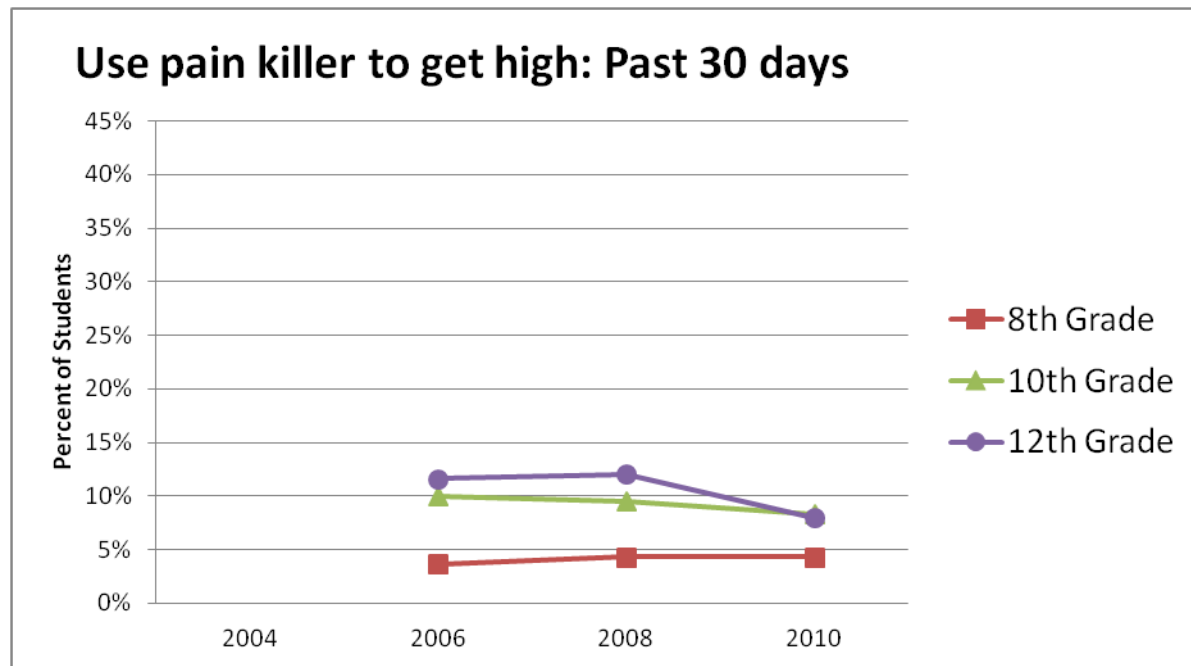
Department

Vision

Mission

Core set of Values

Non-medical Use of Pain Killer Trends: By Youth Age Group



	2004	2006	2008	2010
8th Grade		3.6% \pm 0.8	4.3% \pm 0.9	4.3% \pm 0.5
10th Grade		10.0% \pm 1.2	9.5% \pm 1.2	8.3% \pm 1.3
12th Grade		11.6% \pm 2.0	12% \pm 1.6	7.9% \pm 1.2

Source: Healthy Youth Survey

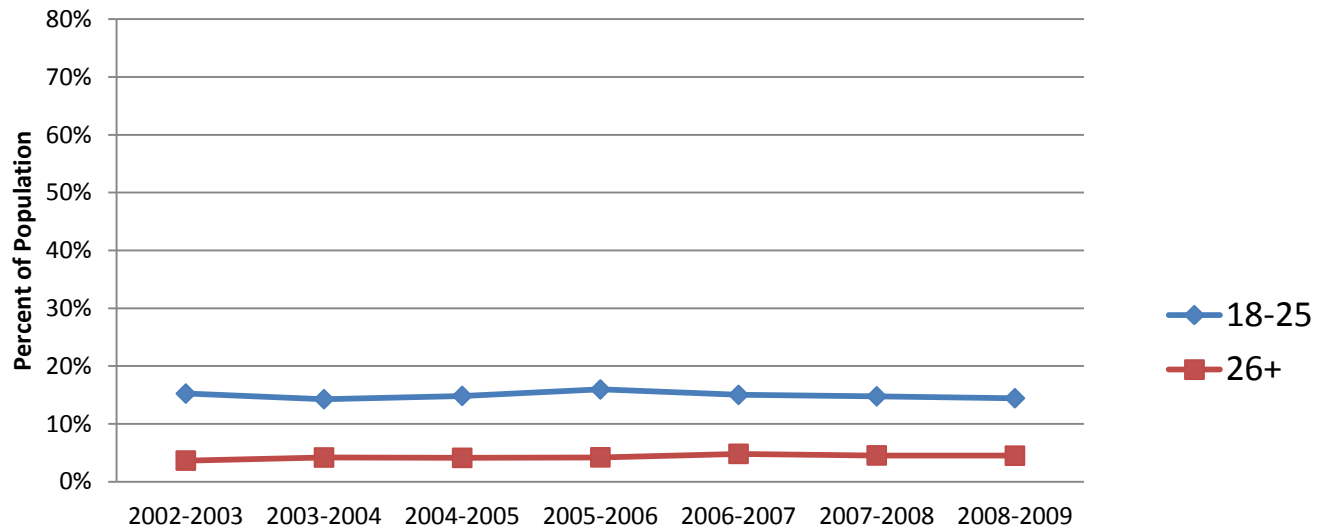


One

Department
Vision
Mission
Core set of Values

Non-Medical Use Of Pain Reliever Trends: By Adult Age Group

Nonmedical use of pain relievers in the past year (Adults)



Source: National Survey on Drug Use and Health



One

Department

Vision

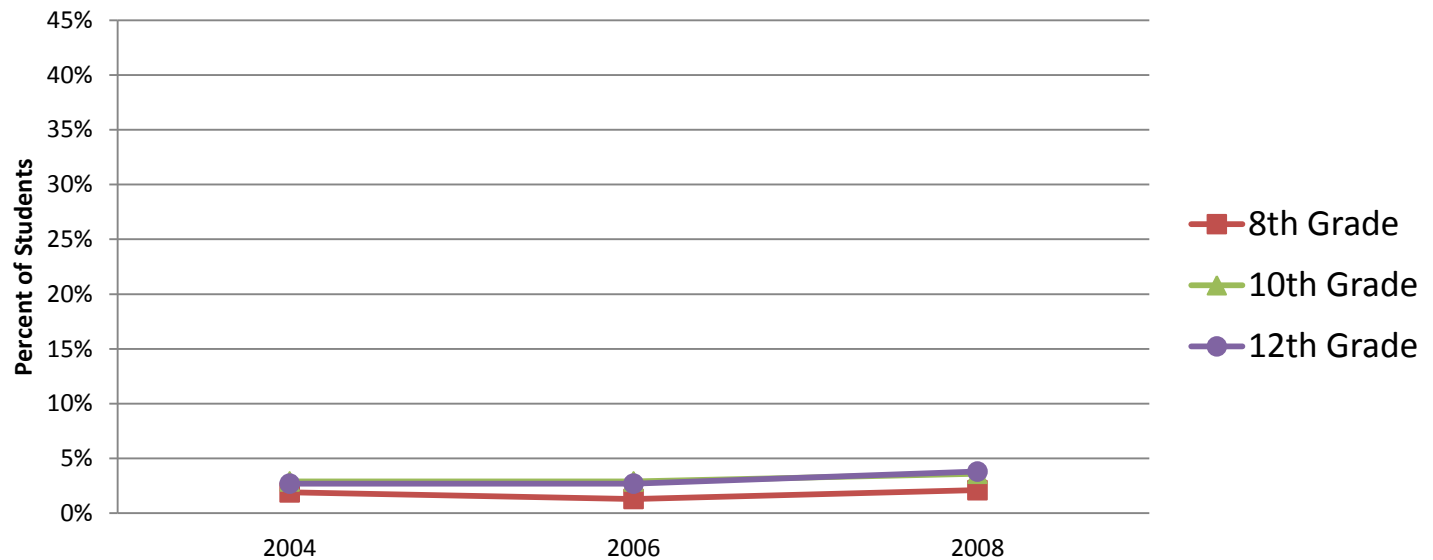
Mission

Core set of Values

Methamphetamines

Use Trends: By Youth Age Group

Used methamphetamines* in past 30 days (Youth)



	2004	2006	2008
8th Grade	1.9% +/- 0.2	1.3% +/- 0.2	2.1% +/- 0.5
10th Grade	2.9% +/- 0.6	2.9% +/- 0.4	3.6% +/- 0.7
12th Grade	2.7% +/- 0.6	2.7% +/- 0.6	3.8% +/- 1.1

Source: Healthy Youth Survey

*Meth, crystal meth, ice, crank. Not including other types of amphetamines.



One

Department

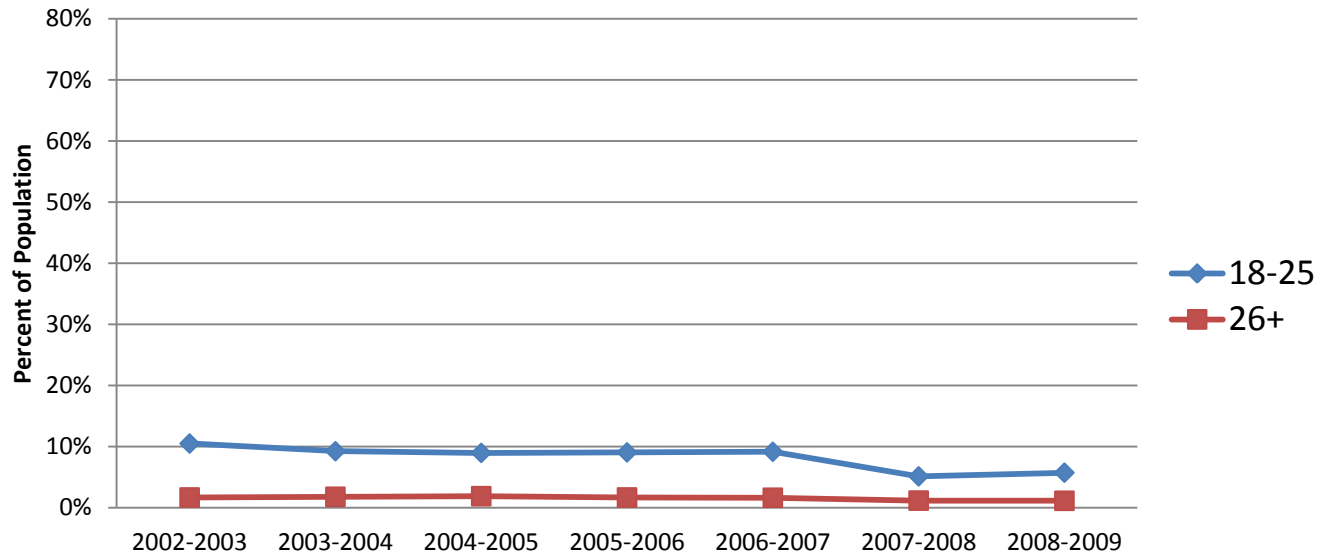
Vision

Mission

Core set of Values

Illicit Drug Dependence or Abuse Trends: By Adult Age Group

Any illicit drug dependence or abuse during the past year
(Adults)*



Source: National Survey on Drug Use and Health

Notes: Illicit drugs include marijuana/hashish, cocaine (including crack), heroin, hallucinogens, inhalants, or prescription-type psychotherapeutics used non-medically.

* Difference between 2002/2003 and 2008/2009 statistically significant for the 18-25 age group.



One

Department
Vision
Mission
Core set of Values

Mental Health Indicators

- Serious mental illness
- Serious psychological distress
- Major depressive episodes and symptoms of depression
- Suicidal ideation



One

Department

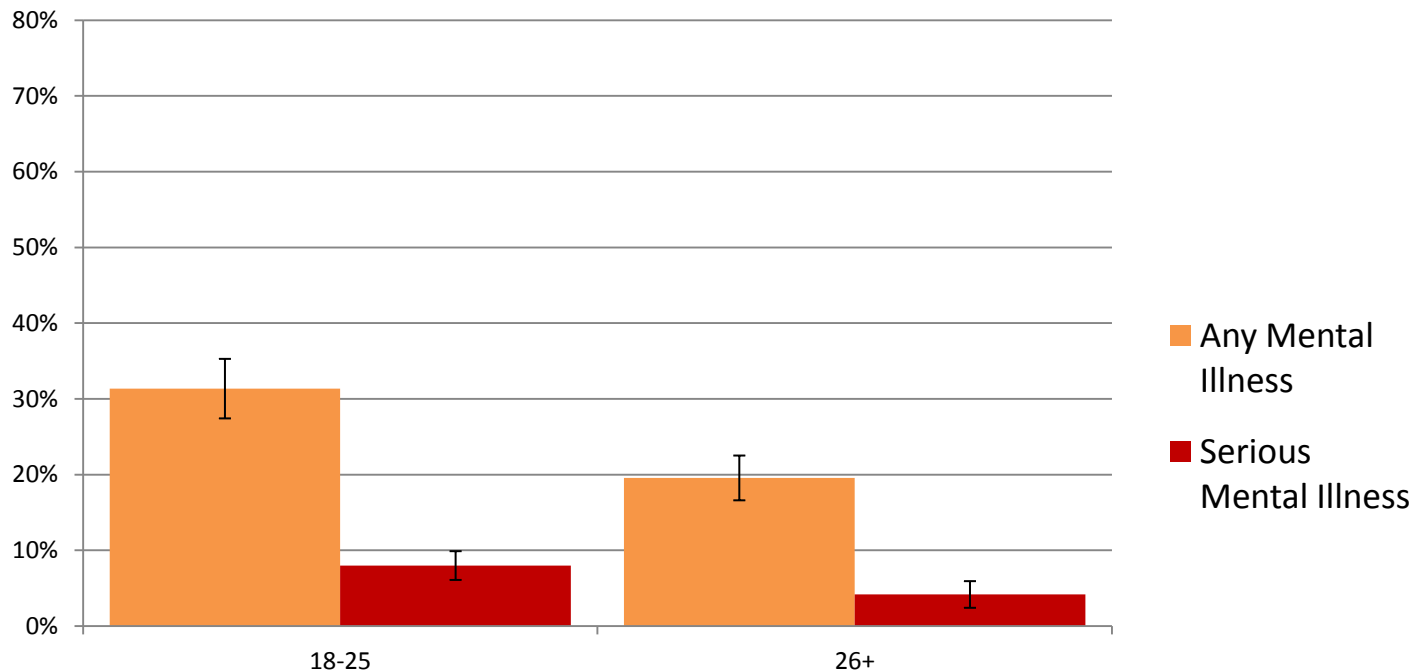
Vision

Mission

Core set of Values

Mental Illness Rates: by Adult Age Group

Mental mental illness in past year, by adult Age Group



Source: National Survey on Drug Use and Health, 2008/2009

Notes: Any mental illness is defined as having a diagnosable mental, behavioral, or emotional disorder, other than a substance use disorder, that met the criteria found in DSM-IV. Serious mental illness is defined as having a diagnosable mental, behavioral, or emotional disorder that resulted in functional impairment.



One

Department

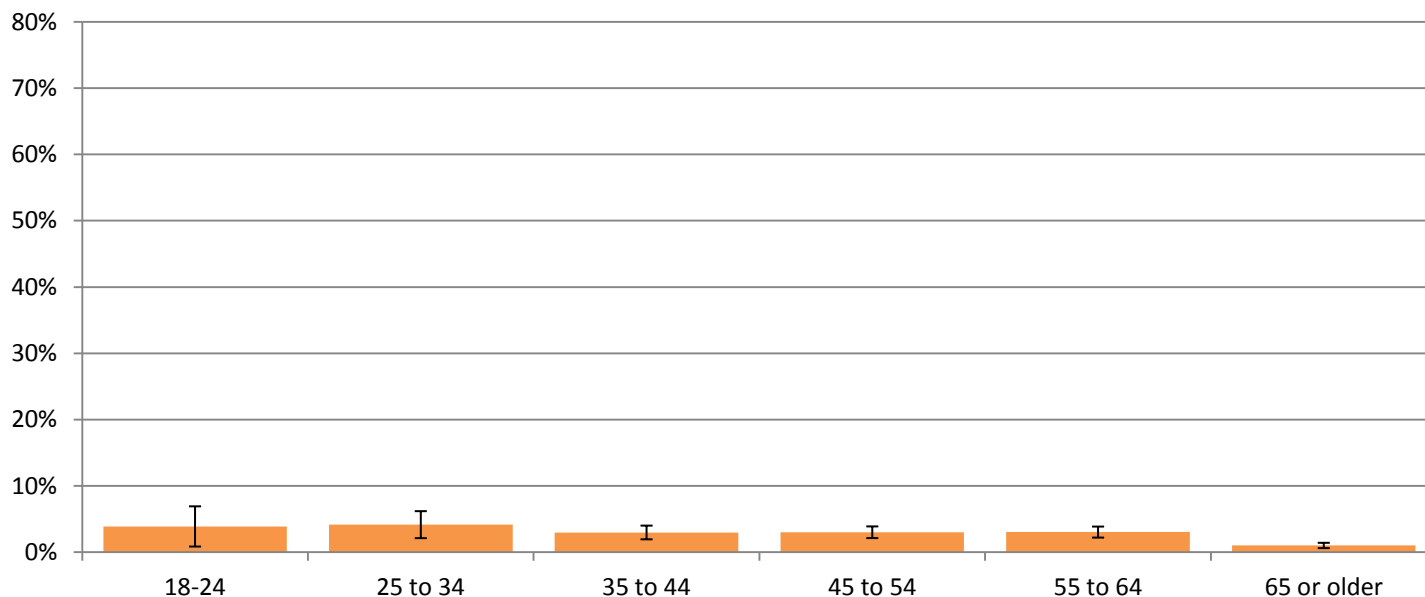
Vision

Mission

Core set of Values

Serious Psychological Distress Rates: by Adult Age Group

Serious Psychological Distress in Past Month, by Adult Age Group



Source: Behavioral Risk Factors Surveillance System (BRFSS), 2010. SPD is defined as a score ≥ 13 on Kessler-6 distress scale.



One

Department

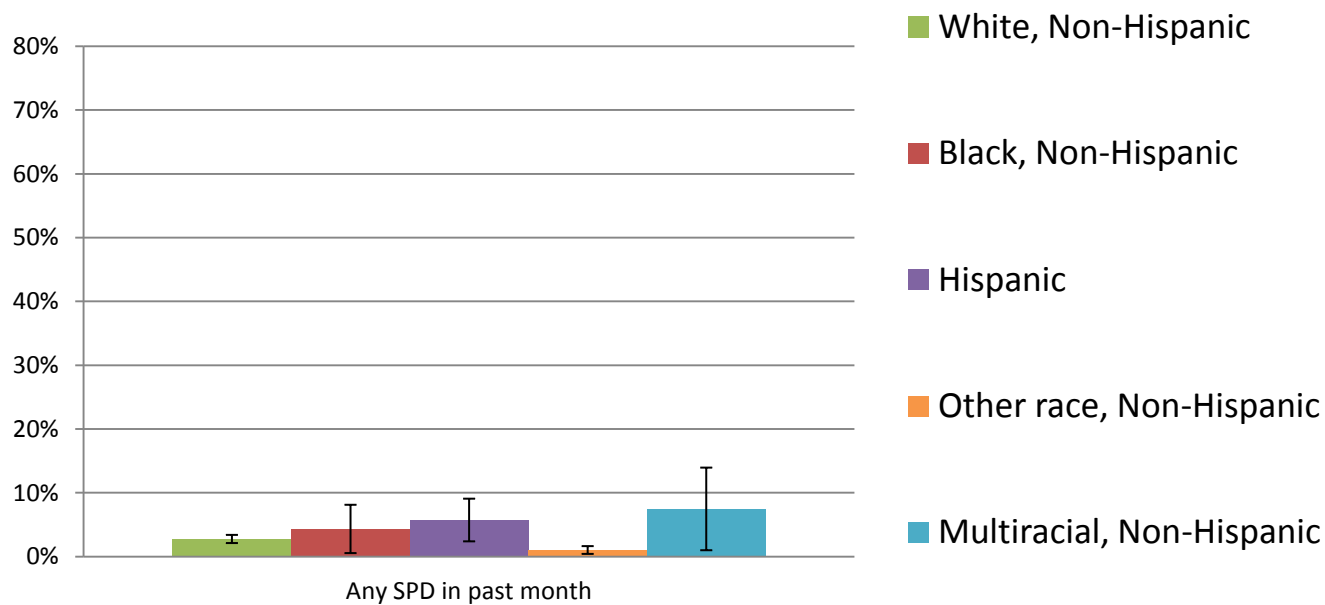
Vision

Mission

Core set of Values

Serious Psychological Distress Rates: by Race & Ethnicity

Any Serious Psychological Distress in Past 30 Days, by Race and Ethnicity



Source: Behavioral Risk Factors Surveillance System (BRFSS), 2010. SPD is defined as a score ≥ 13 on Kessler-6 distress scale.

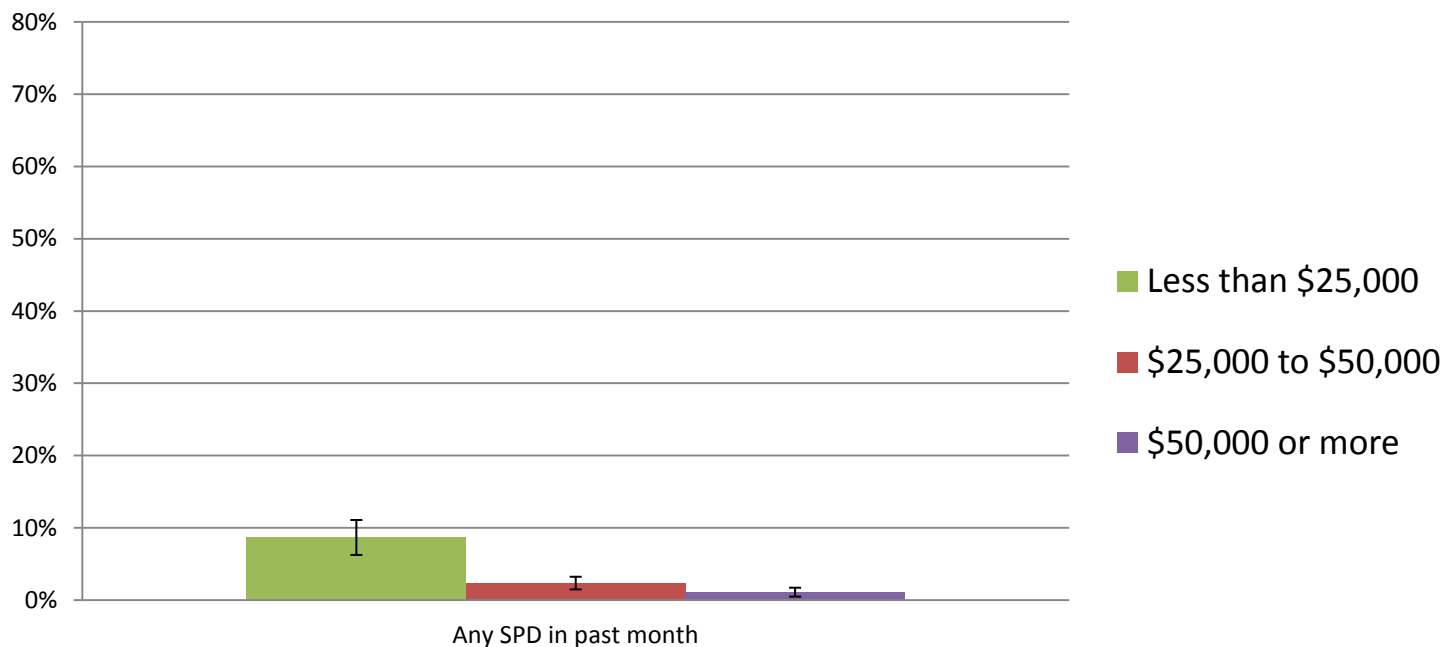


One

Department
Vision
Mission
Core set of Values

Serious Psychological Distress Rates: by Income Group

Any Serious Psychological Distress in Past 30 Days, by Income



Source: Behavioral Risk Factors Surveillance System (BRFSS), 2010. SPD is defined as a score ≥ 13 on Kessler-6 distress scale.

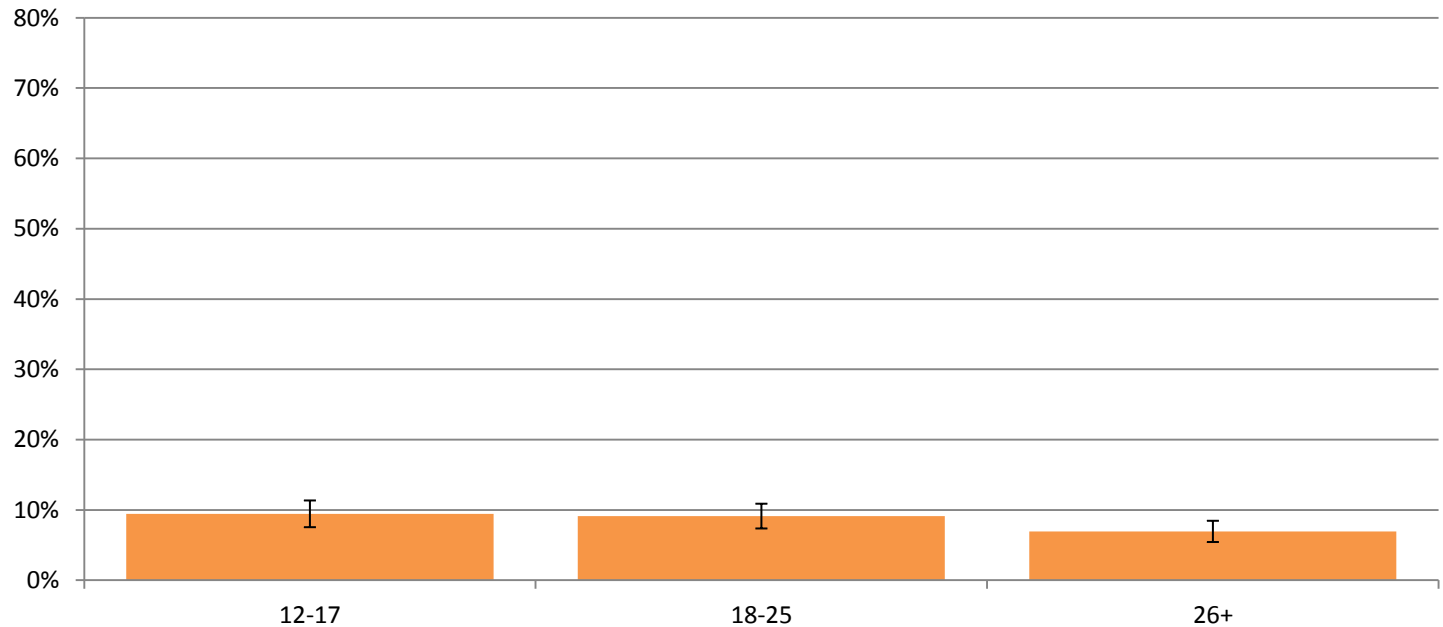


One

Department
Vision
Mission
Core set of Values

Major Depressive Episode Rates: by Age Group

Had at least one major depressive episode in the past year, by age group



Source: National Survey on Drug Use and Health, 2008/2009

Note: Major depressive episode is defined as in DSM-IV, which specifies a period of at least 2 weeks when a person experienced a depressed mood or loss of interest or pleasure in daily activities and had a majority of specified depression symptoms.

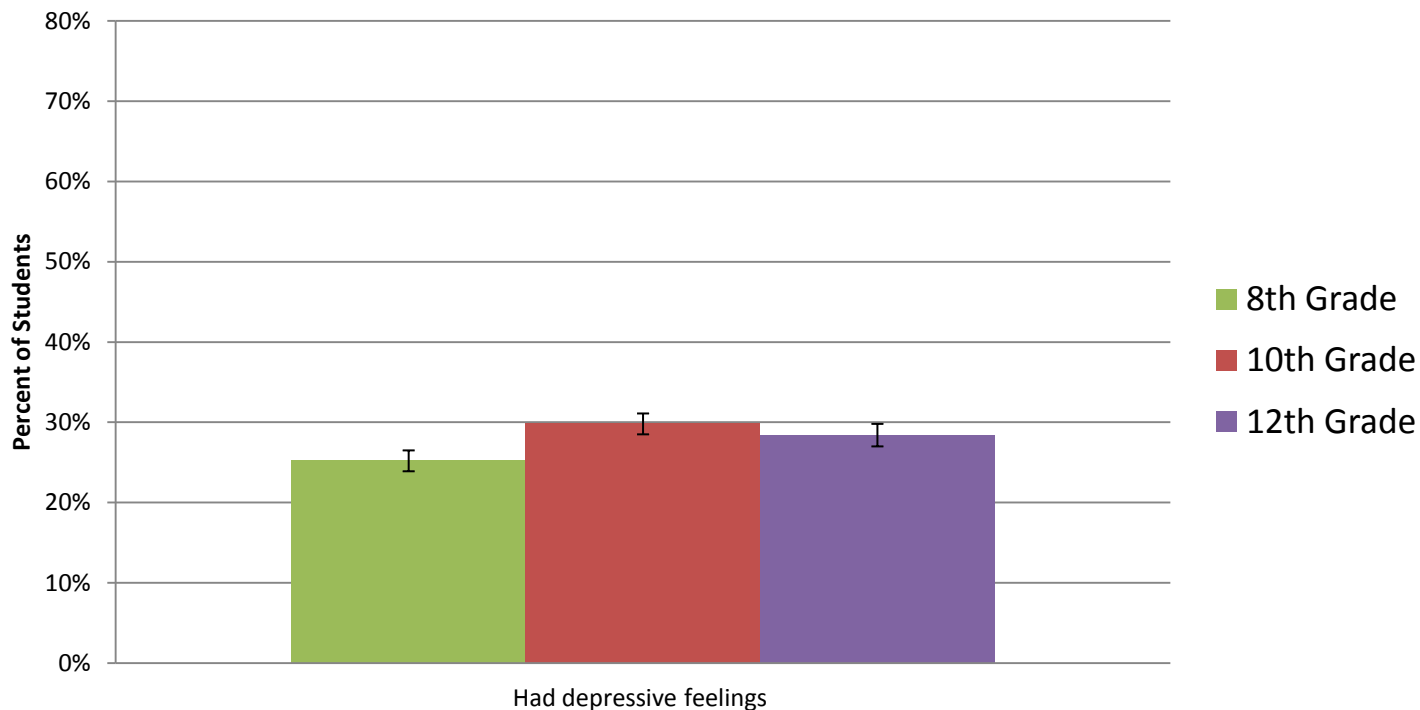


One

Department
Vision
Mission
Core set of Values

Depressive Symptom Rates: by Youth Age Group

Had symptoms of depression during past 12 months, by youth age group



Source: Washington Healthy Youth Survey, 2010

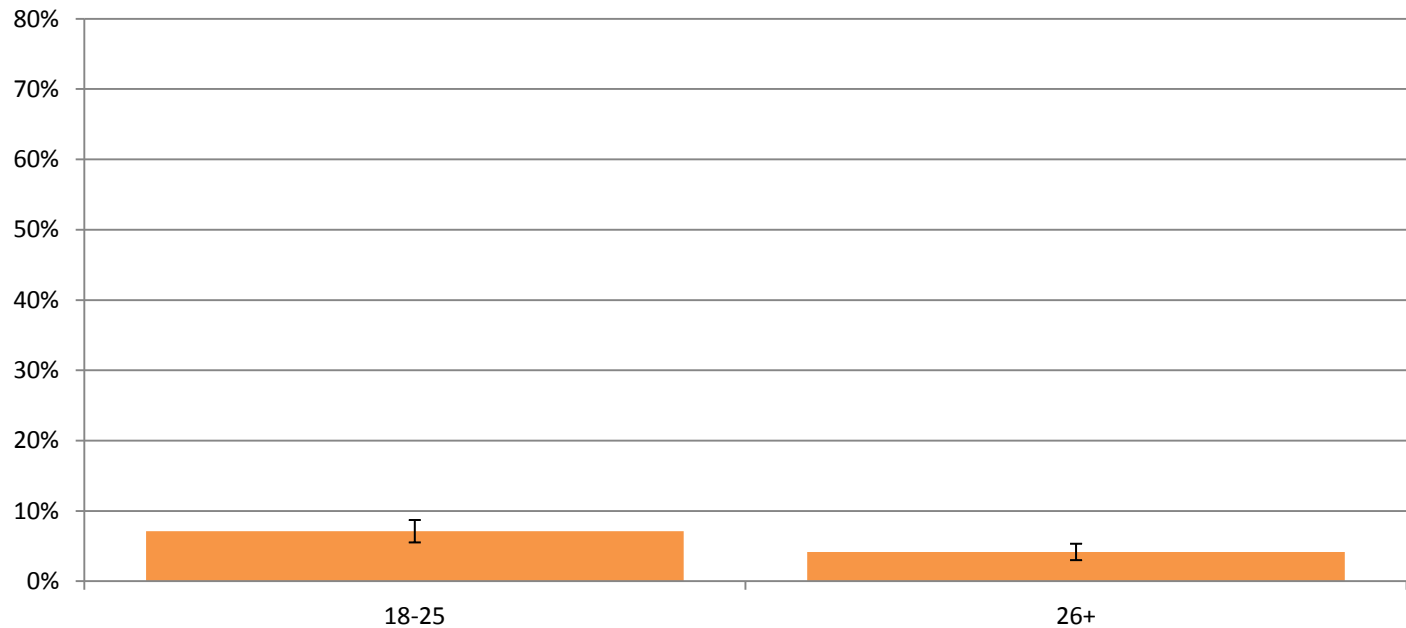


One

Department
Vision
Mission
Core set of Values

Suicidal Ideation Rates: by Adult Age Group

Had serious thoughts of suicide in past year, by adult age group



Source: National Survey on Drug Use and Health, 2008/2009



One

Department

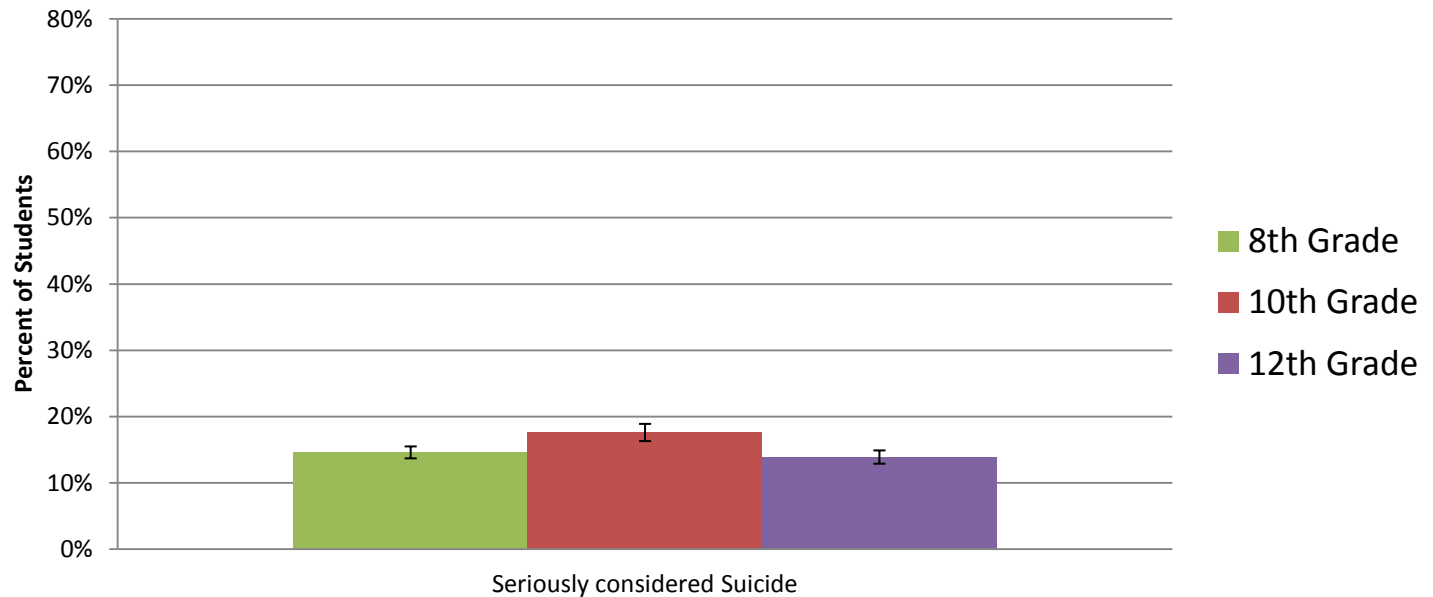
Vision

Mission

Core set of Values

Suicidal Ideation Rates: by Youth Age Group

Seriously considered suicide in past 12 months, by youth age group



Source: Washington Healthy Youth Survey, 2010



One

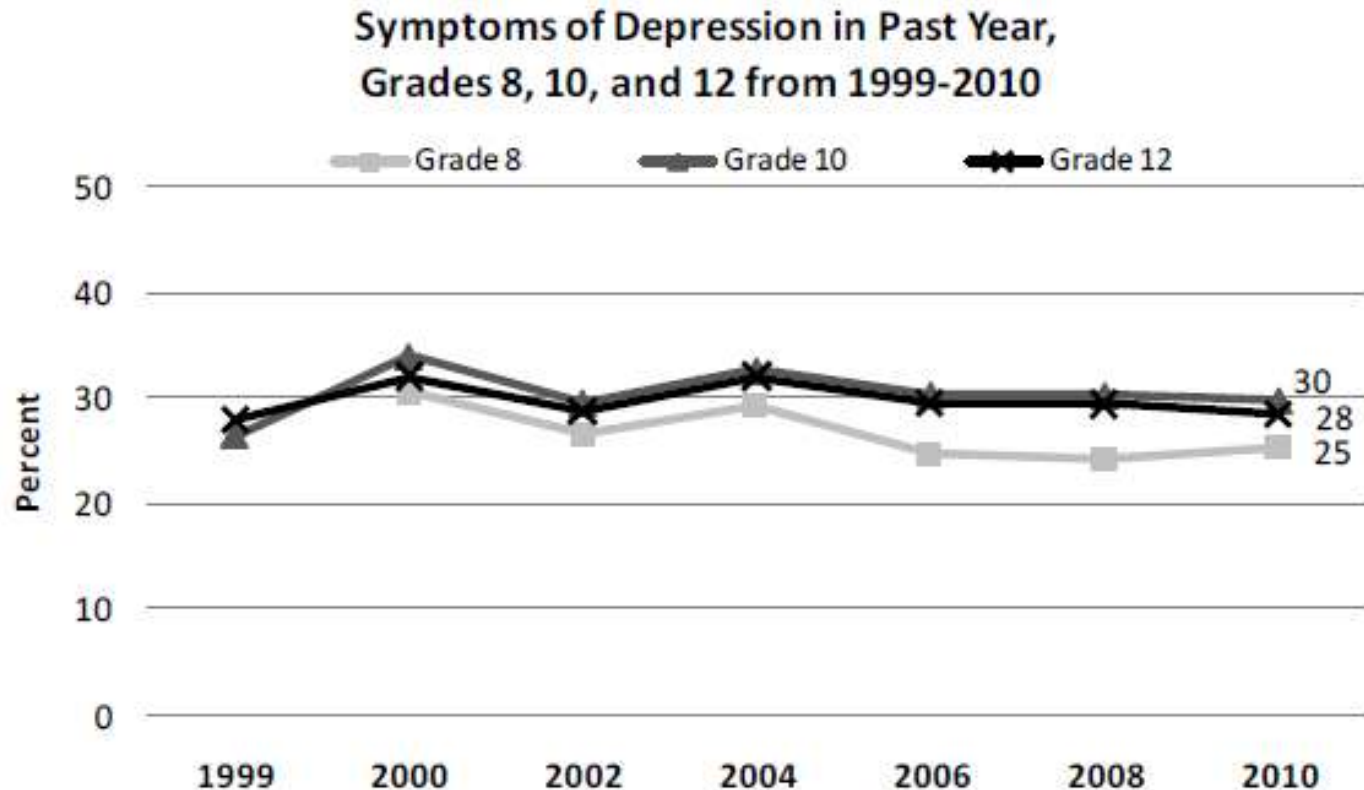
Department

Vision

Mission

Core set of Values

Symptoms of Depression Trends: by Youth Age Group



Source: YRBS, 1999, WASSAHB, 2000, HYS, 2002, 2004, 2006, 2008, 2010



One

Department
Vision
Mission
Core set of Values

Economic Impacts

- Economic costs are varied:
 - Treatment
 - Medical consequences
 - Lost earnings
 - Accidents
 - Criminal justice



One

Department

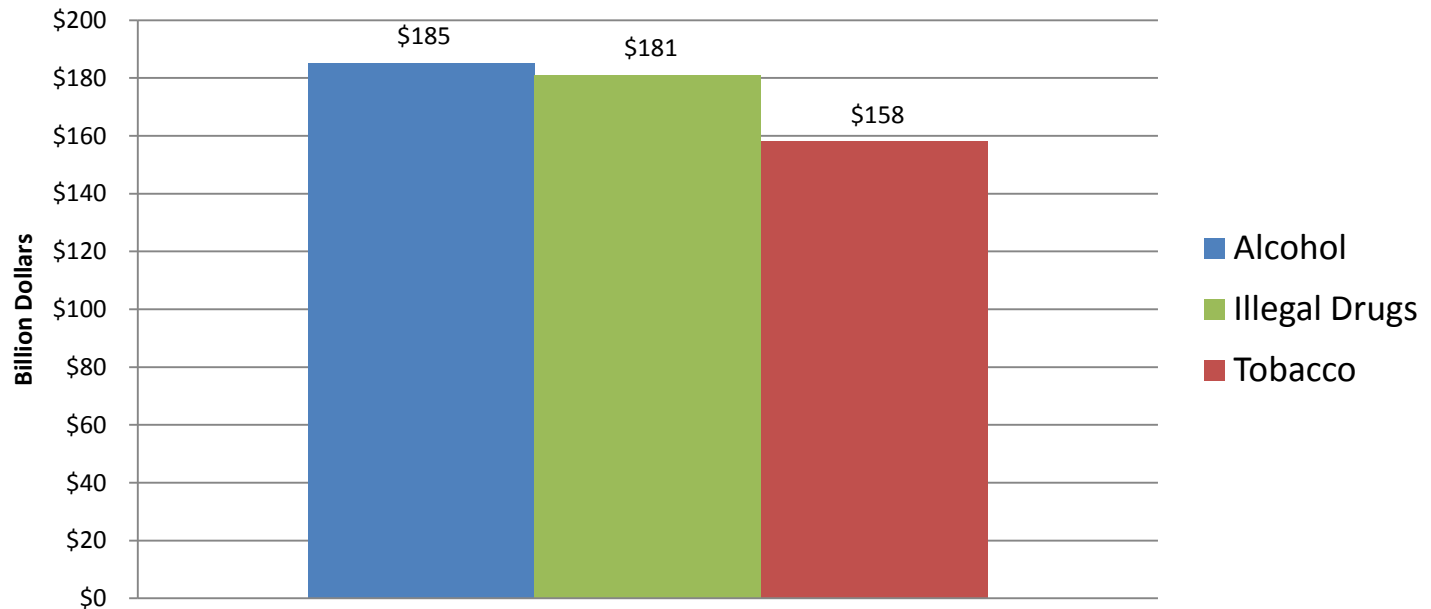
Vision

Mission

Core set of Values

Economic Impacts: National Estimates

Estimated Annual Economic Cost to Society: United States



Source: Surgeon General's Report, 2004; ONDCP, 2004; Harwood, 2000, quoted in NIDA (2008). Addition Science: From Molecules to Managed Care. <http://www.drugabuse.gov/publications/addiction-science>

Note: Economic costs include specialty treatment, medical consequences, lost earnings, and other costs such as accidents and criminal justice.



One

Department

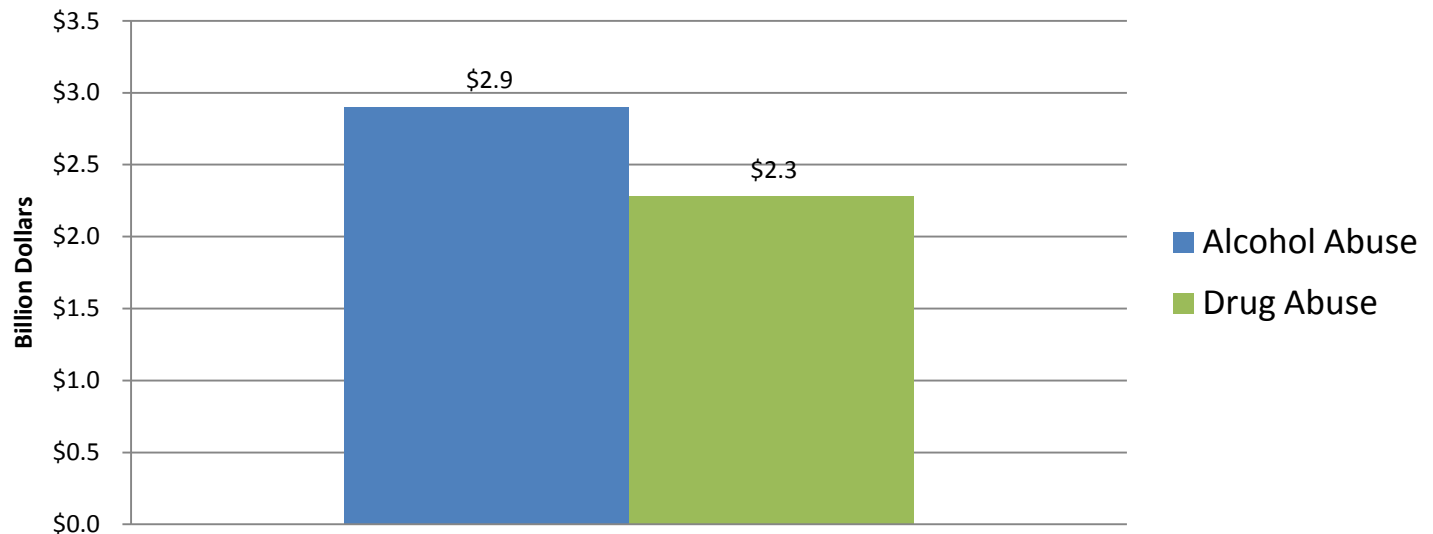
Vision

Mission

Core set of Values

Economic Impacts: State Estimates

Economic Cost of Drug and Alcohol Abuse in Washington State, 2005



Source: Computed from Wickizer, T. The Economic Costs of Drug and Alcohol Abuse in Washington State, 2005. Olympia, WA: Washington State Department of Social and Health Services, Division of Alcohol and Substance Abuse, 2007.



One

Department

Vision

Mission

Core set of Values

Social Impact

- Broad social impacts
 - School achievement
 - School-related consequences
 - Drinking and driving
 - Substance use during pregnancy
 - Adverse Childhood Experiences
 - Deaths
- Other impacts, without available data



One

Department

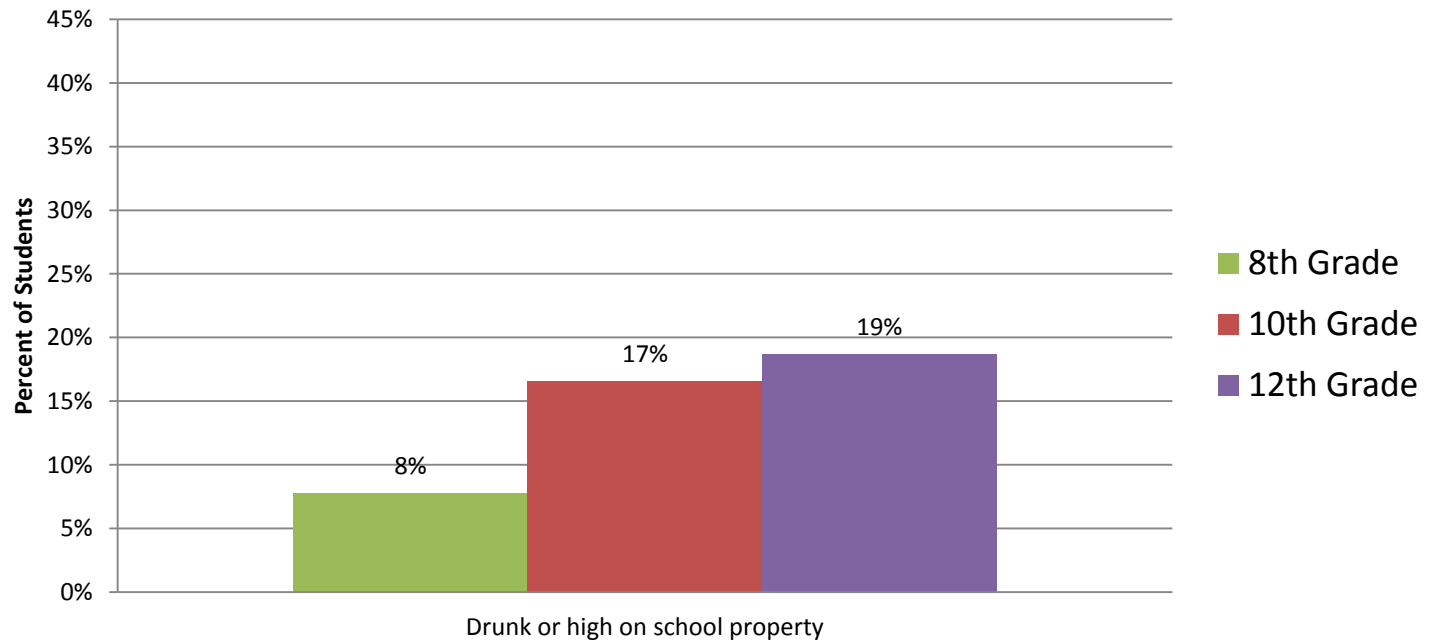
Vision

Mission

Core set of Values

Drunk or High in School

Showing up drunk or high to school in the past year



Source: 2010 Healthy Youth Survey



One

Department

Vision

Mission

Core set of Values

School Related Consequences

Correlation between substance use and negative consequences (Odds Ratio)

	Alcohol	Marijuana	Pain Killer*	Tobacco
Depressive Feelings	2.3	2.0	3.1	2.3
Drunk or high at school	12.6	24.7	22.3	14.0
Riding with driver who had alcohol	6.0	4.8	7.3	4.9
Skipping school	3.5	4.1	5.0	4.1

Source: 2010 HYS.

* Used pain killers to get high



One

Department

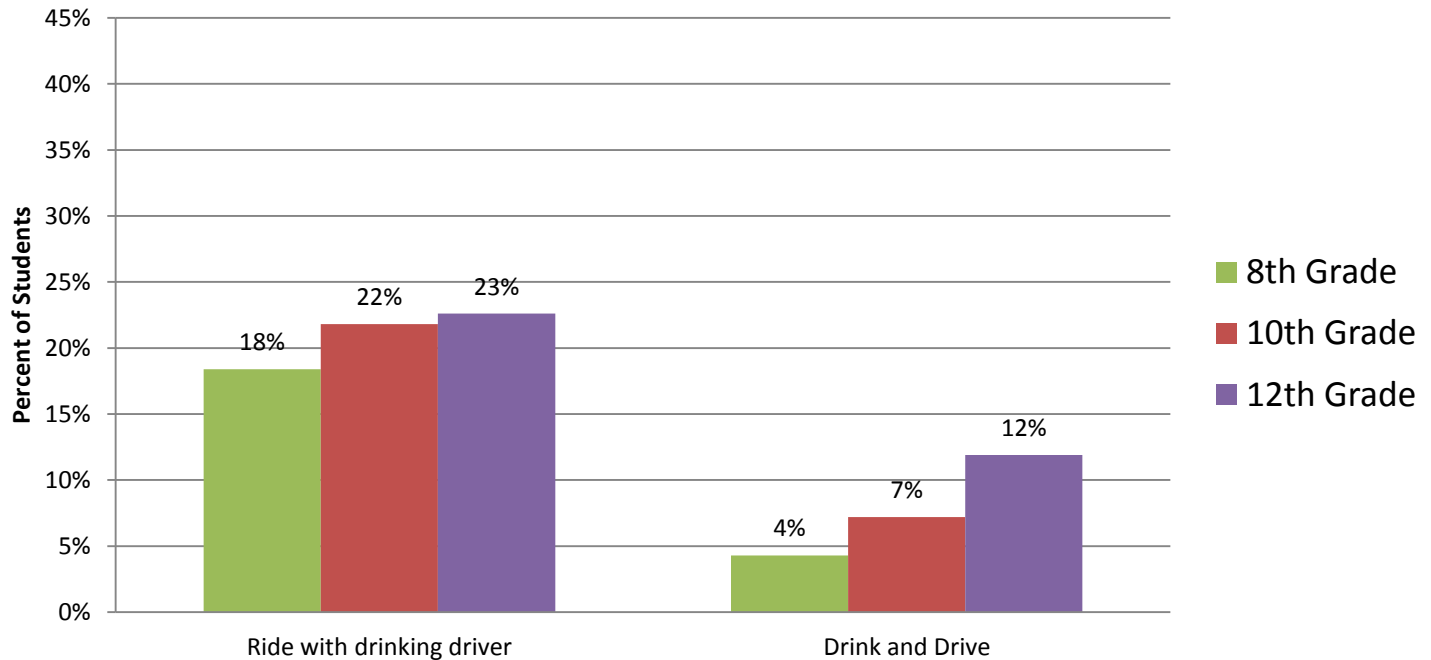
Vision

Mission

Core set of Values

Drinking and Driving: Youth

Rode in a car driven by someone who have been drinking Drinking and driving during past 30 days (Youth)



Source: 2010 Healthy Youth Survey

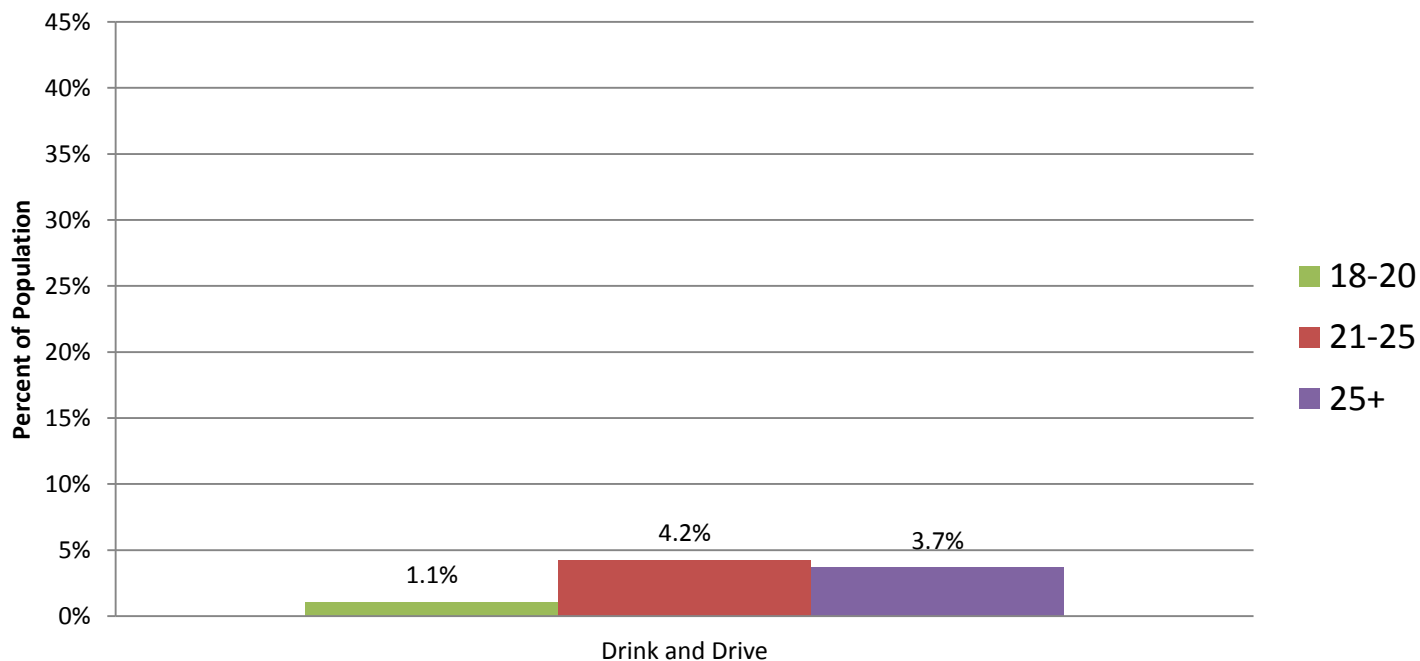


One

Department
Vision
Mission
Core set of Values

Drinking and Driving: Adults

Driving after having too much to drink during past 30 days (Adults)



Source: 2010 BRFSS



One

Department

Vision

Mission

Core set of Values

Traffic Fatalities

	2003-2005		2006-2008		2006-2008 vs. 2003-2005	
	Deaths	% of Total Deaths	Deaths	% of Total Deaths	Percent Change in Number of Deaths	
	1,816	100.0%	1,725	100.0%		-5.0%
Priority One¹						
Alcohol/Drug Impaired Driver-Involved	794	43.7%	828	48.0%		4.3%
Drinking Driver-Involved	706	38.9%	712	41.3%		0.8%
Alcohol Impaired Driver-Involved	557	30.7%	544	31.5%		-2.3%
Drug Impaired Driver-Involved	412	22.7%	474	27.5%		15.0%
Run off the Road*	771	42.5%	722	41.9%		-6.4%
Speeding Involved	707	38.9%	693	40.2%		-2.0%

Source: WSDOT, Target Zero, Young Drivers Presentation.

Note: 1. Target Zero Priorities



One

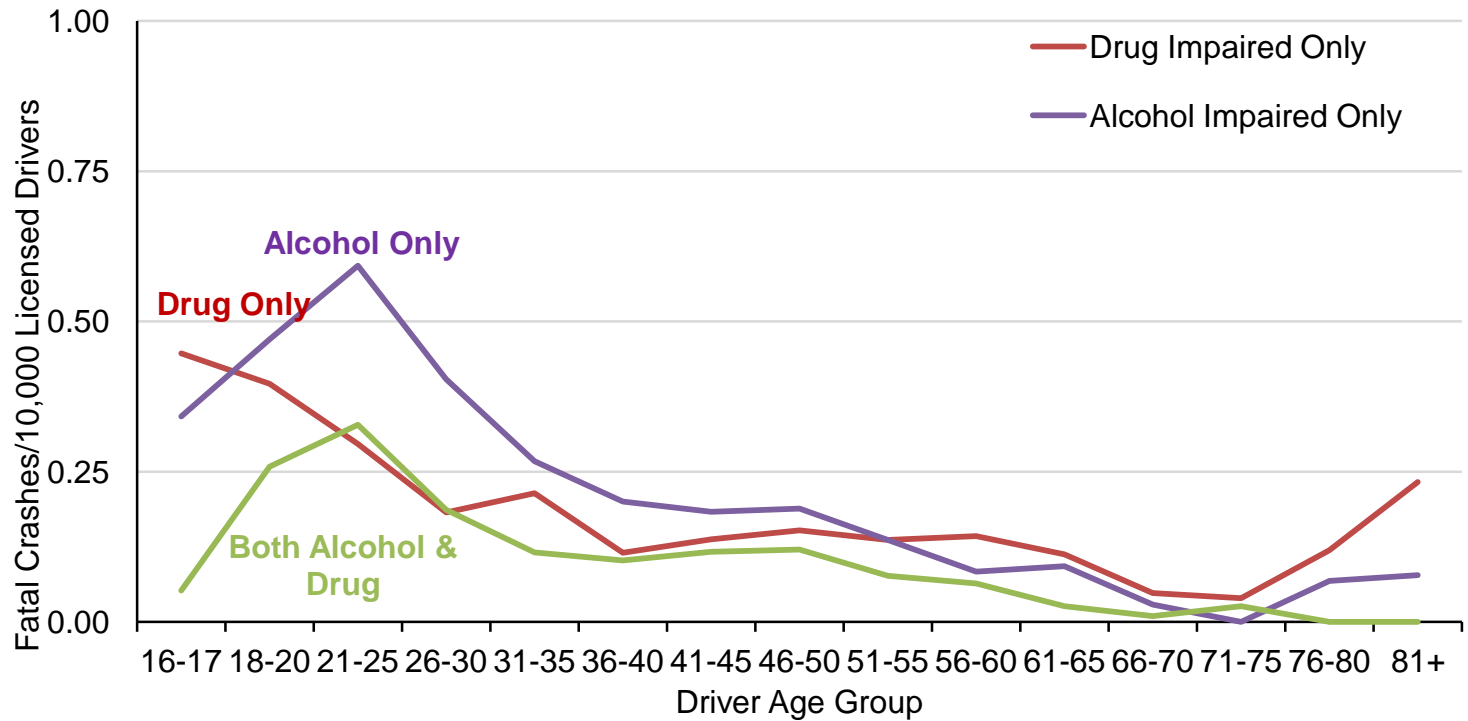
Department

Vision

Mission

Core set of Values

Fatal Crashes



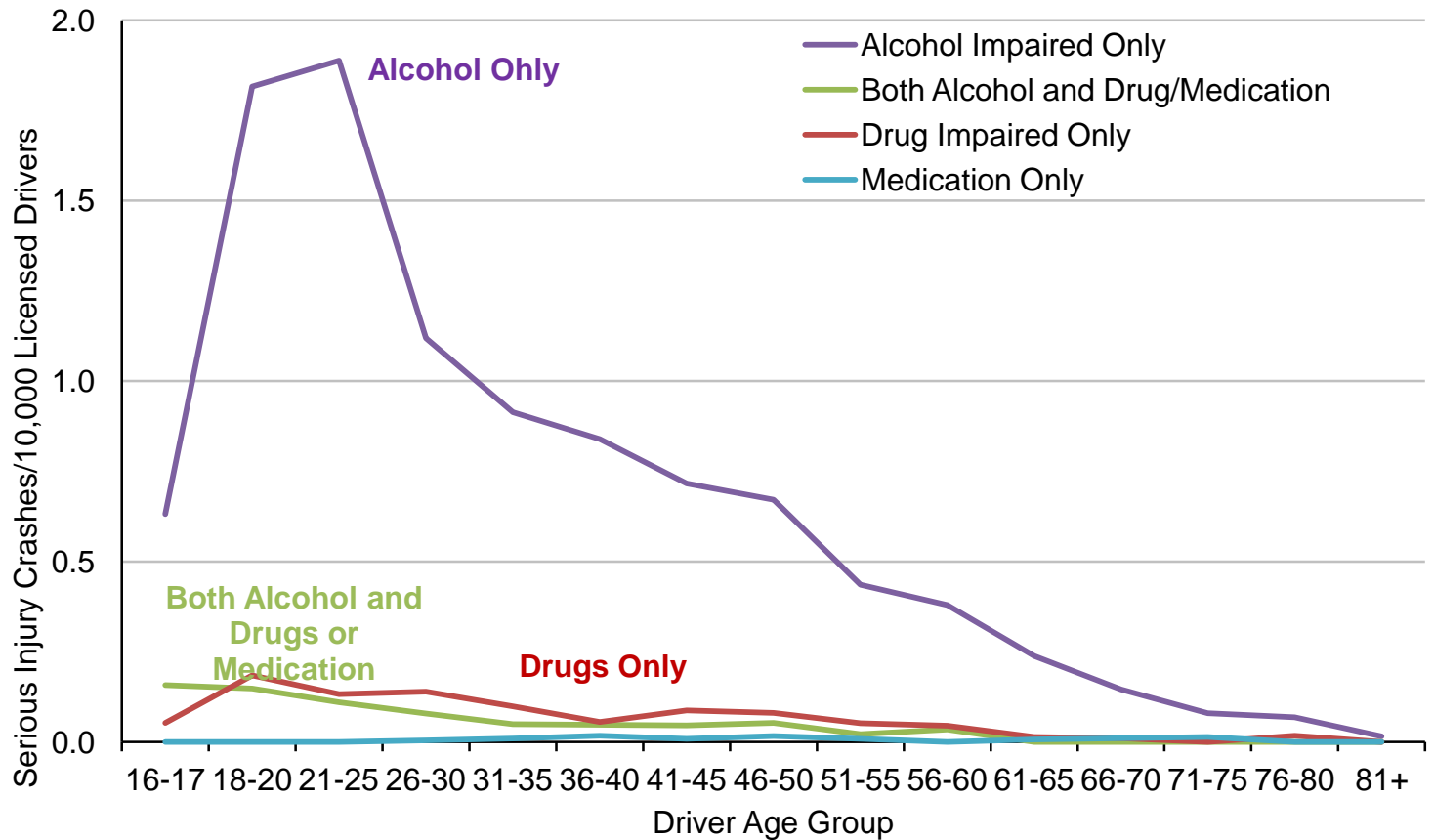
Data source: Fatality Analysis Reporting System (FARS) (1/12/2011)



One

Department
Vision
Mission
Core set of Values

Serious Injury Crashes



Data source: WSDOT (12/15/2010)

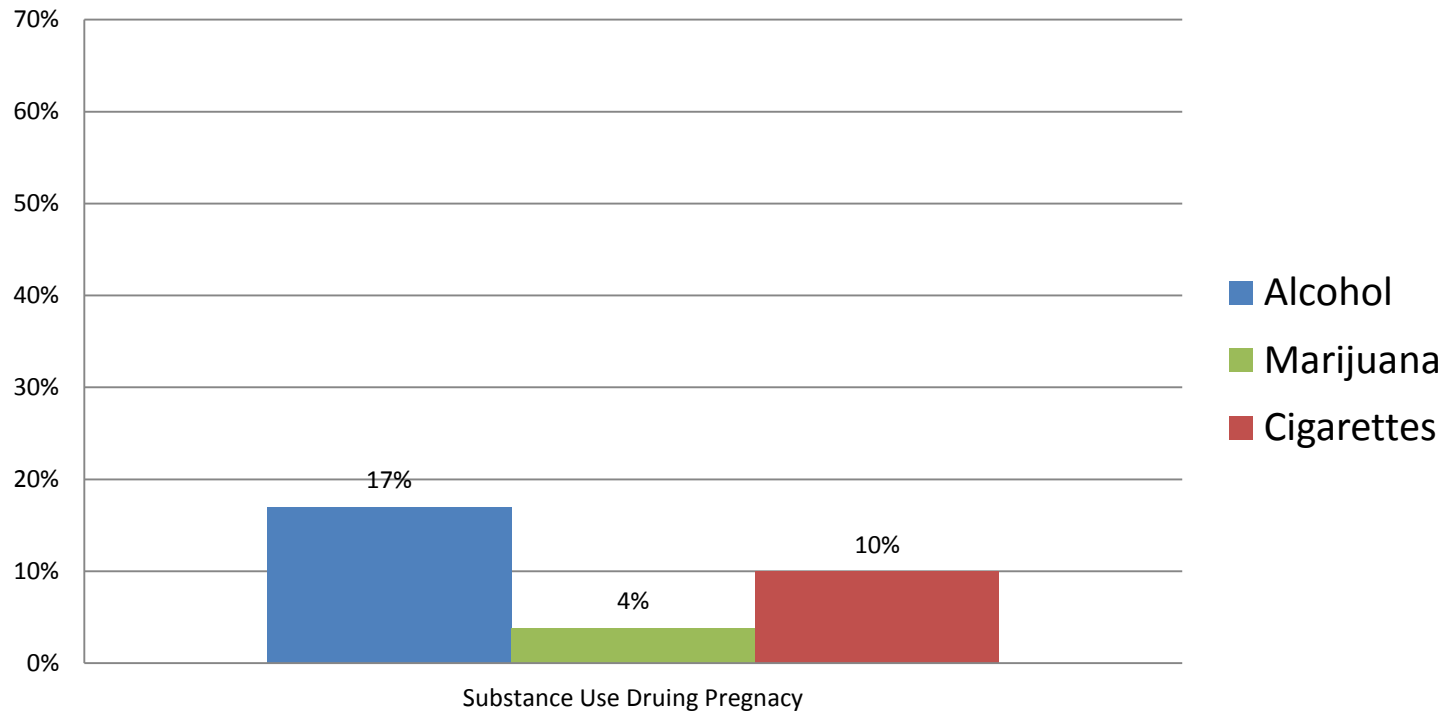


One

Department
Vision
Mission
Core set of Values

Substance Use During Pregnancy

Percentage of Pregnant Women who Reported Substance Use



Source: Behavioral Risk Factors Surveillance System (BRFSS), 2010

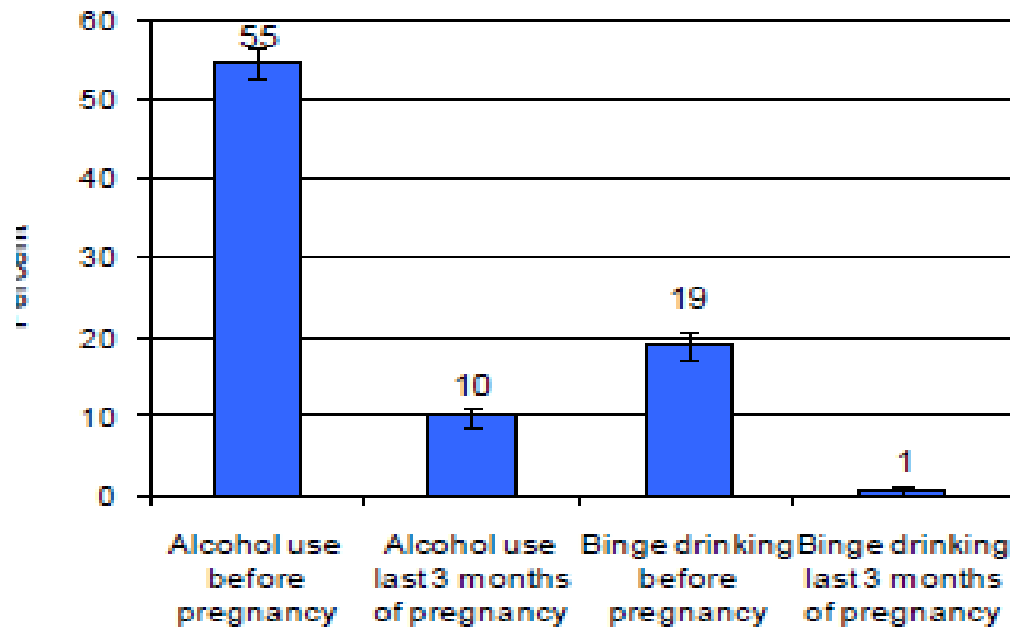


One

Department
Vision
Mission
Core set of Values

Alcohol Use During Pregnancy

Alcohol Use Before and During Pregnancy
WA PRAMS, 2006-2008



Source: Pregnancy Risk Assessment Monitoring System (PRAMS). Alcohol Use Before and During Pregnancy.
<http://www.doh.wa.gov/cfh/assessment/docs/datareport/alcusepreg.pdf>

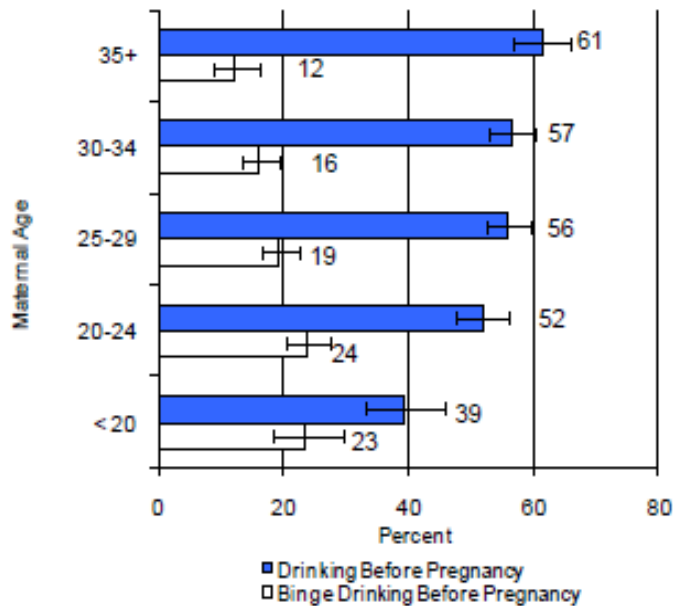


One

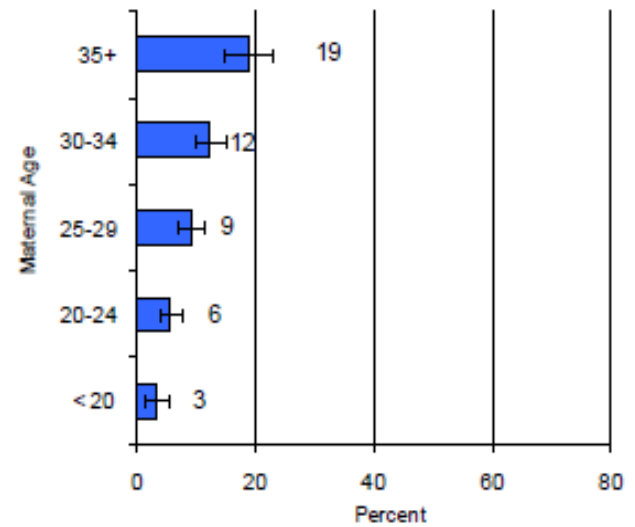
Department
Vision
Mission
Core set of Values

Alcohol Use During Pregnancy: By Age Group

Drinking and Binge Drinking Before Pregnancy by Maternal Age, 2006-2008



Drinking In Third Trimester by Maternal Age, 2006-2008



Source: Pregnancy Risk Assessment Monitoring System (PRAMS). Alcohol Use Before and During Pregnancy. <http://www.doh.wa.gov/cfh/assessment/docs/datareport/alcusepreg.pdf>

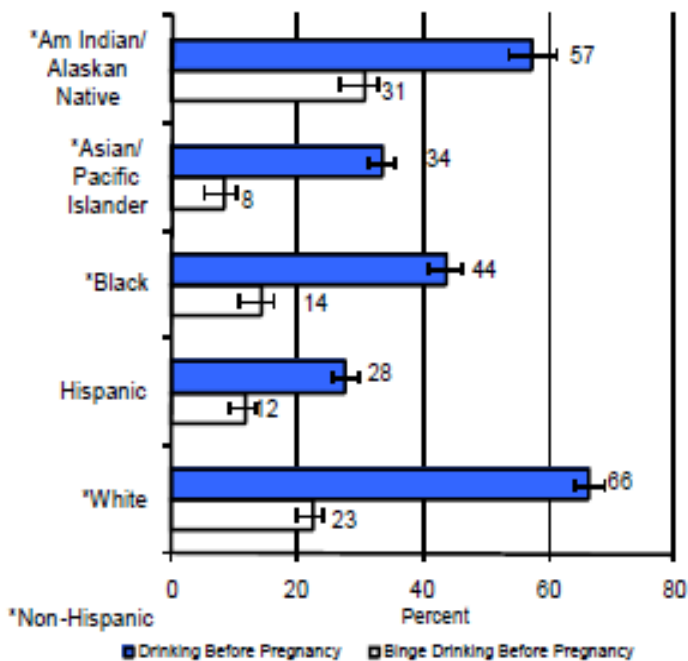


One

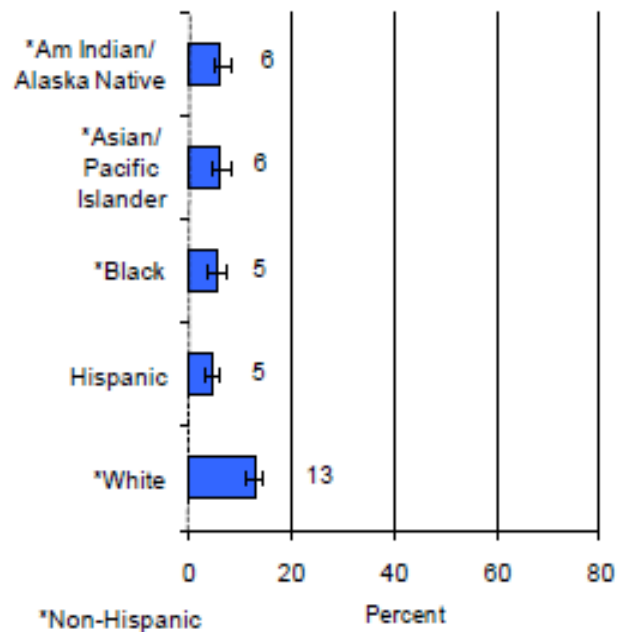
Department
Vision
Mission
Core set of Values

Alcohol Use During Pregnancy: By Race & Ethnicity

Drinking and Binge Drinking Before Pregnancy by Maternal Race/Ethnicity, 2006-2008



Drinking In Third Trimester by Maternal Race/Ethnicity, 2006-2008



Source: Pregnancy Risk Assessment Monitoring System (PRAMS). Alcohol Use Before and During Pregnancy. <http://www.doh.wa.gov/cfh/assessment/docs/datareport/alcusepreg.pdf>

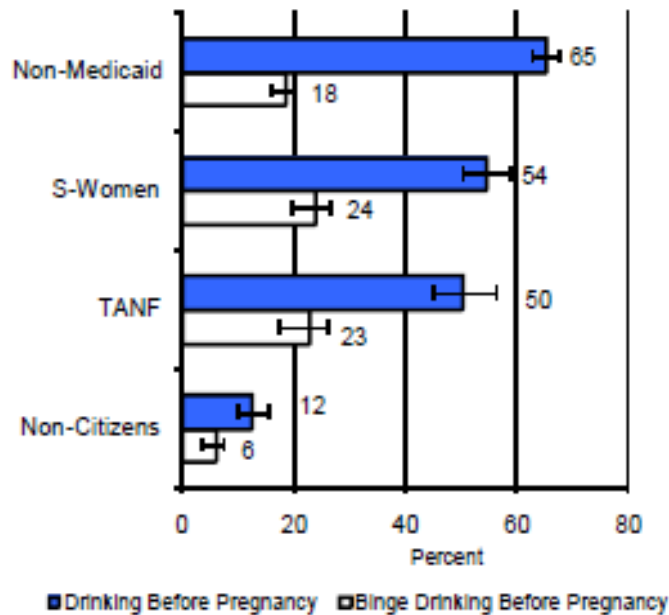


One

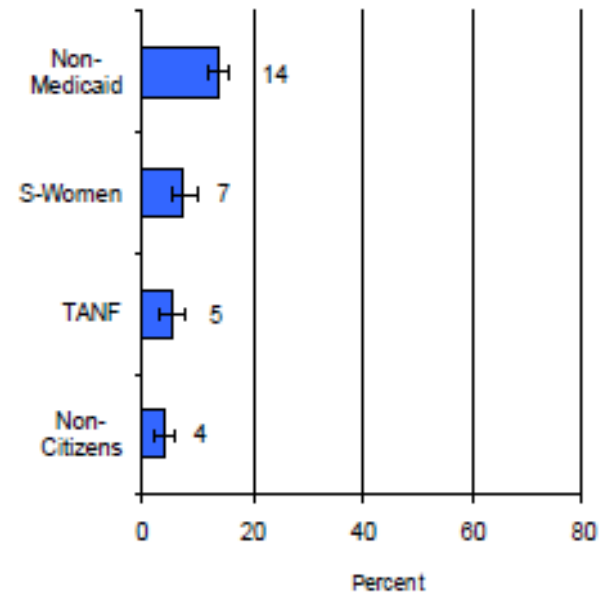
Department
Vision
Mission
Core set of Values

Alcohol Use During Pregnancy: By Medicaid Status

Drinking and Binge Drinking Before Pregnancy by Medicaid Program, 2006-2008



Drinking In Third Trimester by Medicaid Program, 2006-2008



Source: Pregnancy Risk Assessment Monitoring System (PRAMS). Alcohol Use Before and During Pregnancy. <http://www.doh.wa.gov/cfh/assessment/docs/datareport/alcusepreg.pdf>

Notes: S-women are citizens who are eligible to receive Medicaid because they are pregnant and have income at or below 185% federal poverty line.

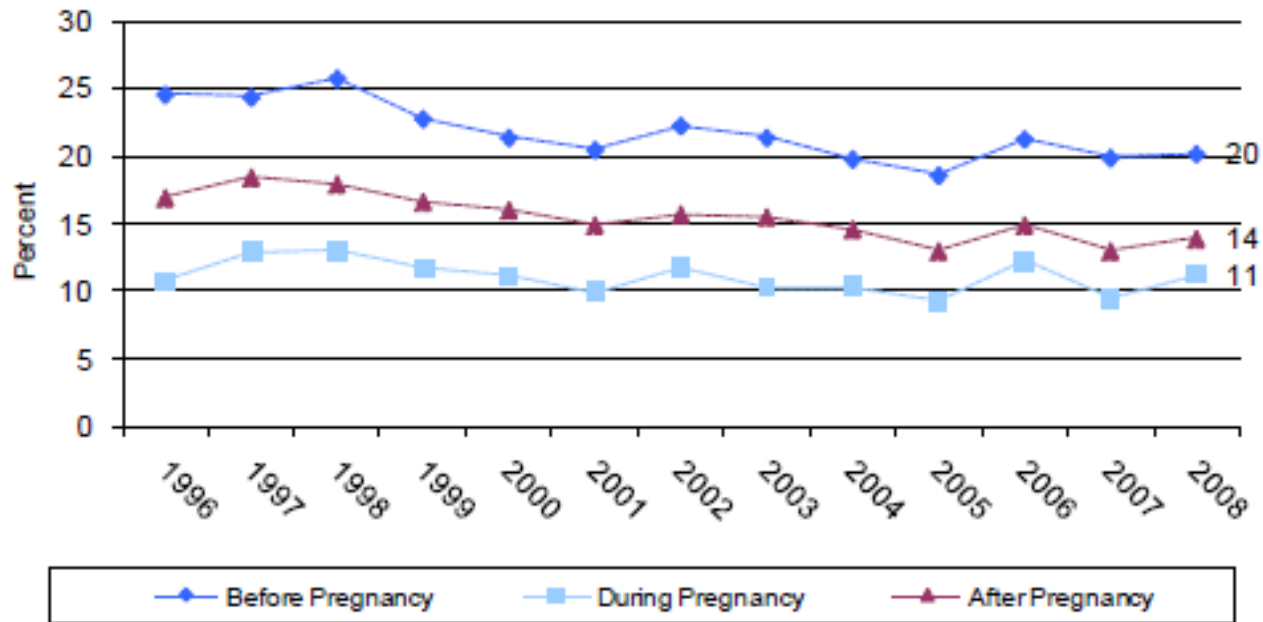


One

Department
Vision
Mission
Core set of Values

Smoking Cigarettes During Pregnancy

Smoking Before, During and After Pregnancy
WA PRAMS, 1996-2008



Source: Pregnancy Risk Assessment Monitoring System (PRAMS). Smoking Before, During and After Pregnancy.
<http://www.doh.wa.gov/cfh/assessment/docs/datareport/smokingpreg.pdf>



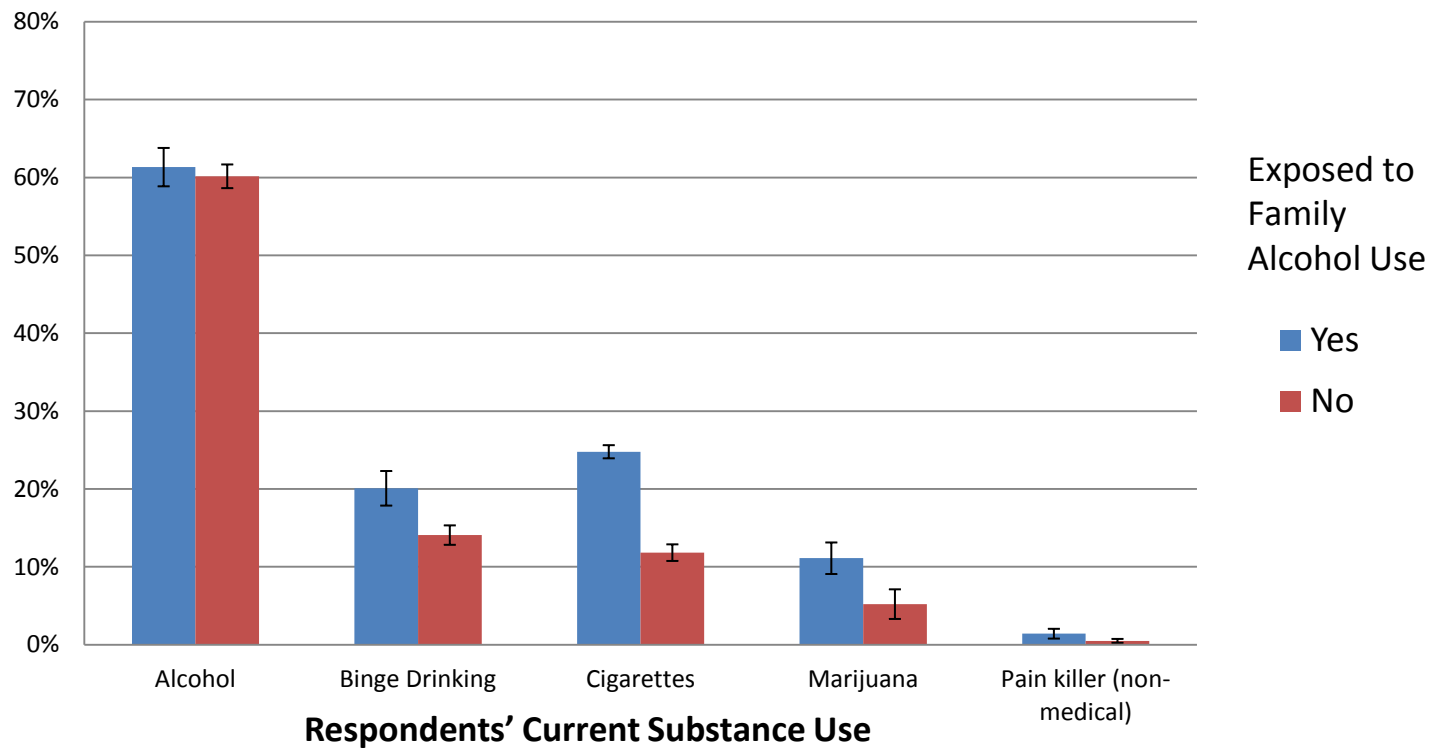
One

Department
Vision
Mission
Core set of Values

Adverse Childhood Experiences

Family Alcohol Use:

Did you live with anyone who was a problem drinker/alcoholic



Source: Behavioral Risk Factors Surveillance System (BRFSS), 2010



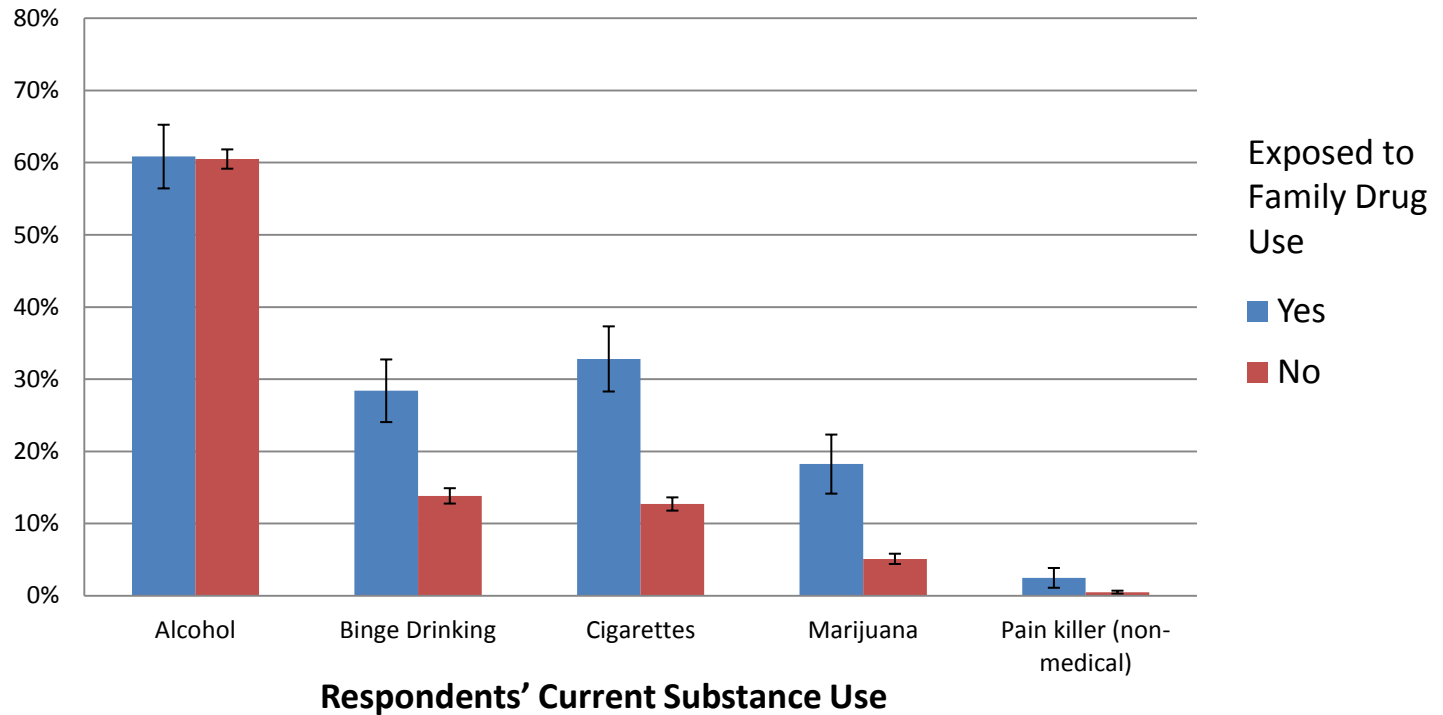
One

Department
Vision
Mission
Core set of Values

Adverse Childhood Experiences

Family Drug Use

Did you live with anyone who used illegal street drugs or who abused prescription medications



Source: Behavioral Risk Factors Surveillance System (BRFSS), 2010



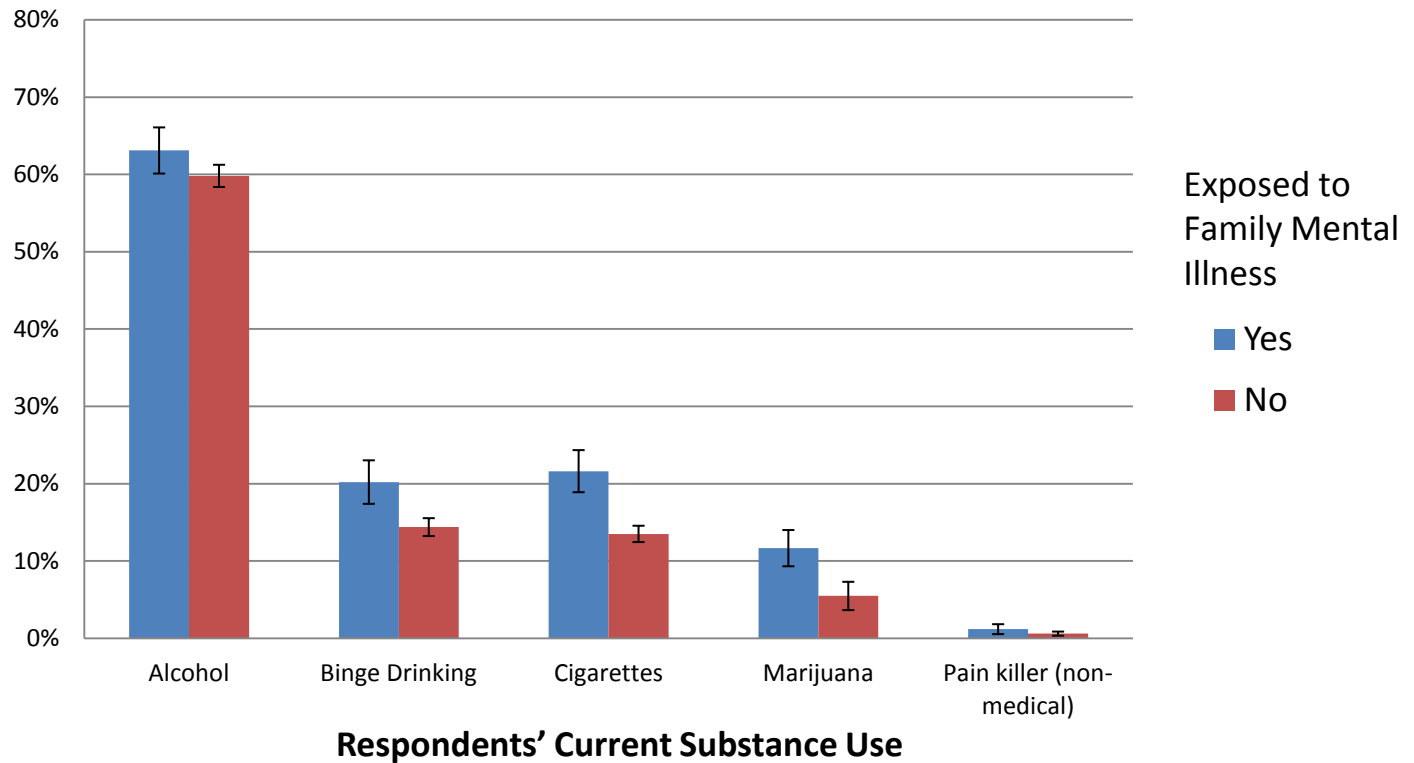
One

Department
Vision
Mission
Core set of Values

Adverse Childhood Experiences

Family Mental Illness:

Did you live with anyone who was depressed, mentally ill, or suicidal?



Source: Behavioral Risk Factors Surveillance System (BRFSS), 2010



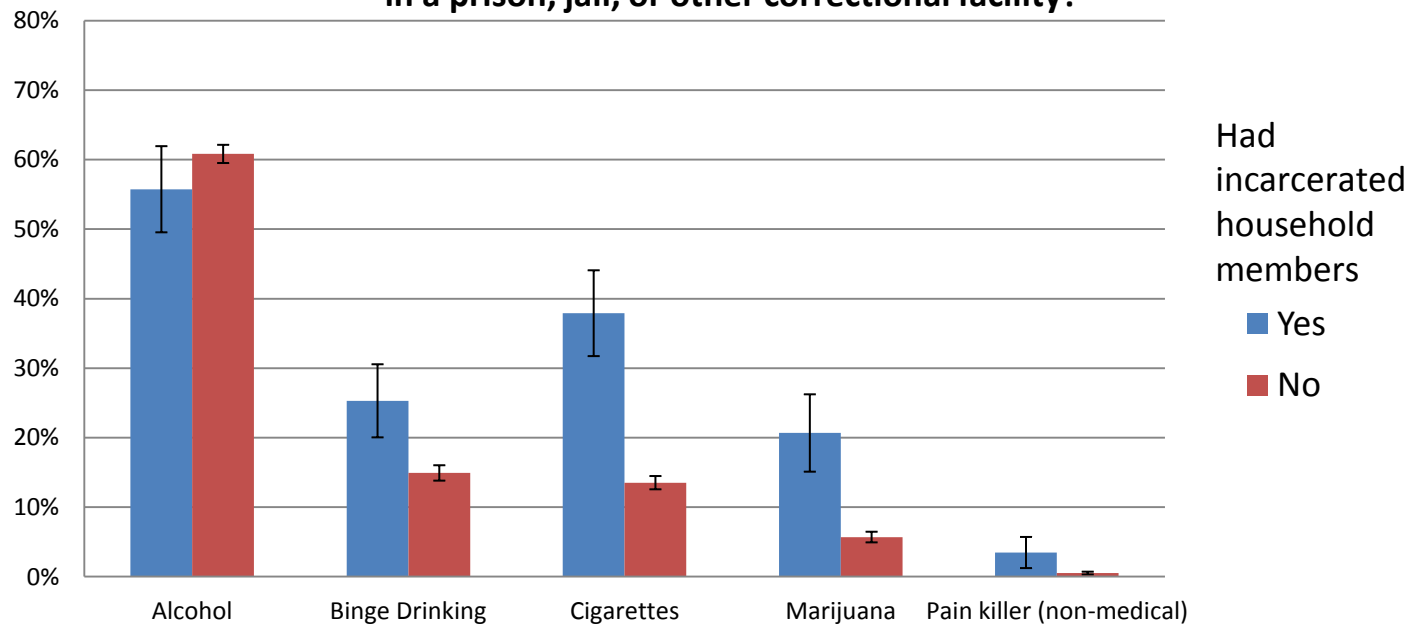
One

Department
Vision
Mission
Core set of Values

Adverse Childhood Experiences

Incarcerated Household Member:

Did you live with anyone who served time or was sentenced to serve time in a prison, jail, or other correctional facility?



Respondents' Current Substance Use

Source: Behavioral Risk Factors Surveillance System (BRFSS), 2010

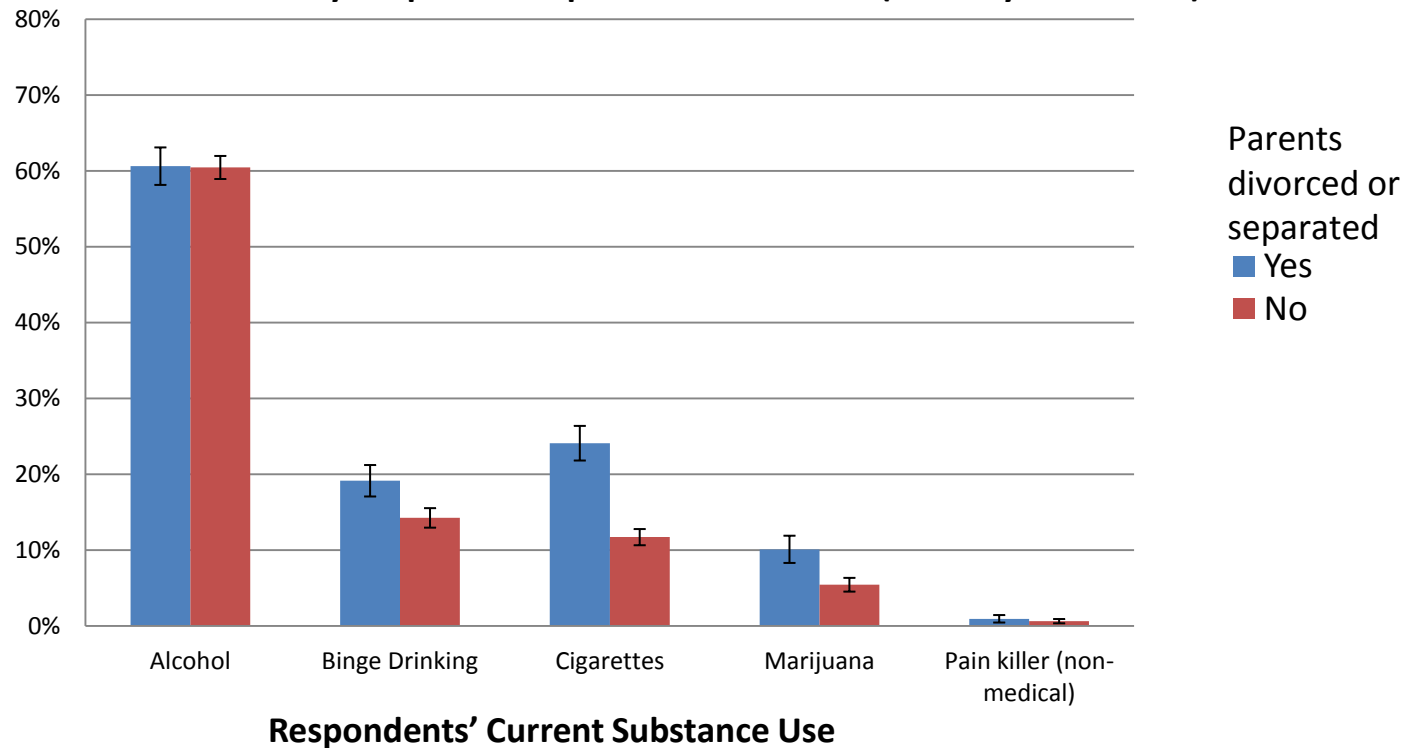


One

Department
Vision
Mission
Core set of Values

Adverse Childhood Experiences

Parental Separation or Divorce: Were your parents separated or divorced (before you were 18)?



Source: Behavioral Risk Factors Surveillance System (BRFSS), 2010



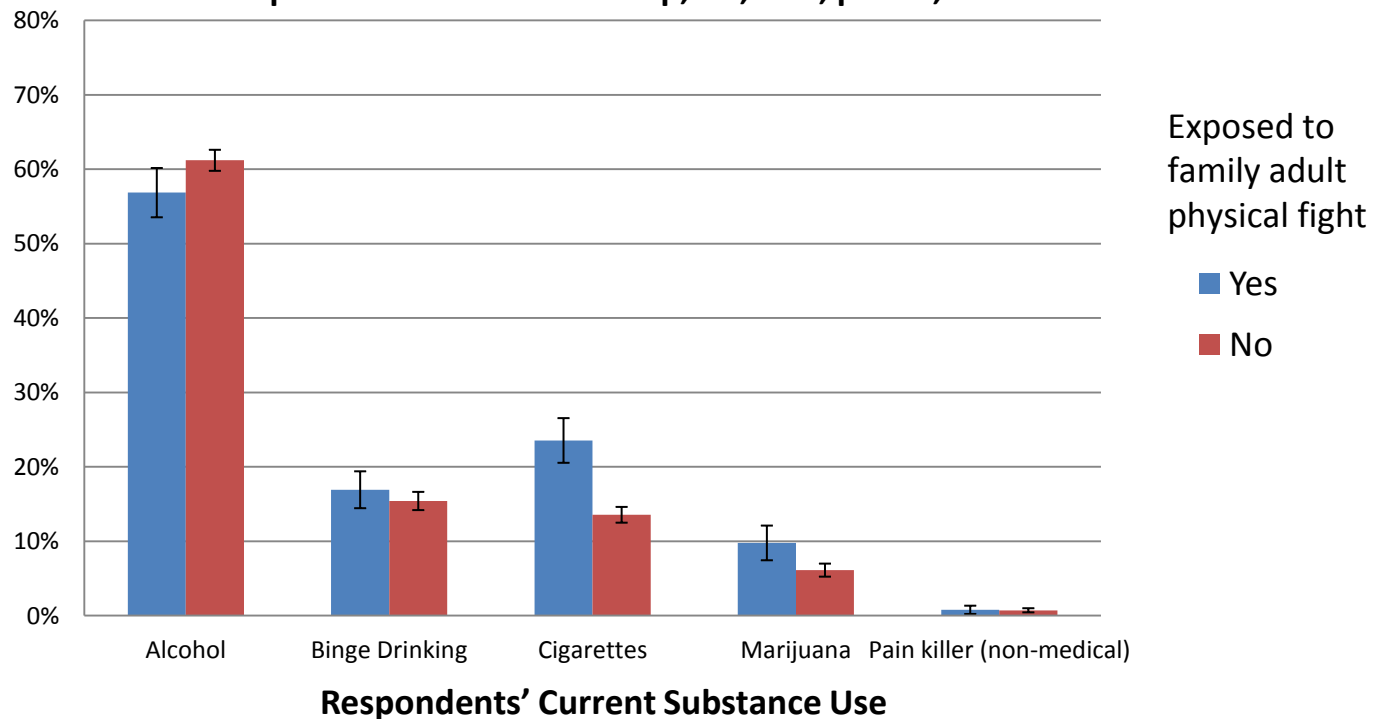
One

Department
Vision
Mission
Core set of Values

Adverse Childhood Experiences

Family Adult Physical Fight:

Did parents or adults ever slap, hit, kick, punch, or beat each other?



Source: Behavioral Risk Factors Surveillance System (BRFSS), 2010



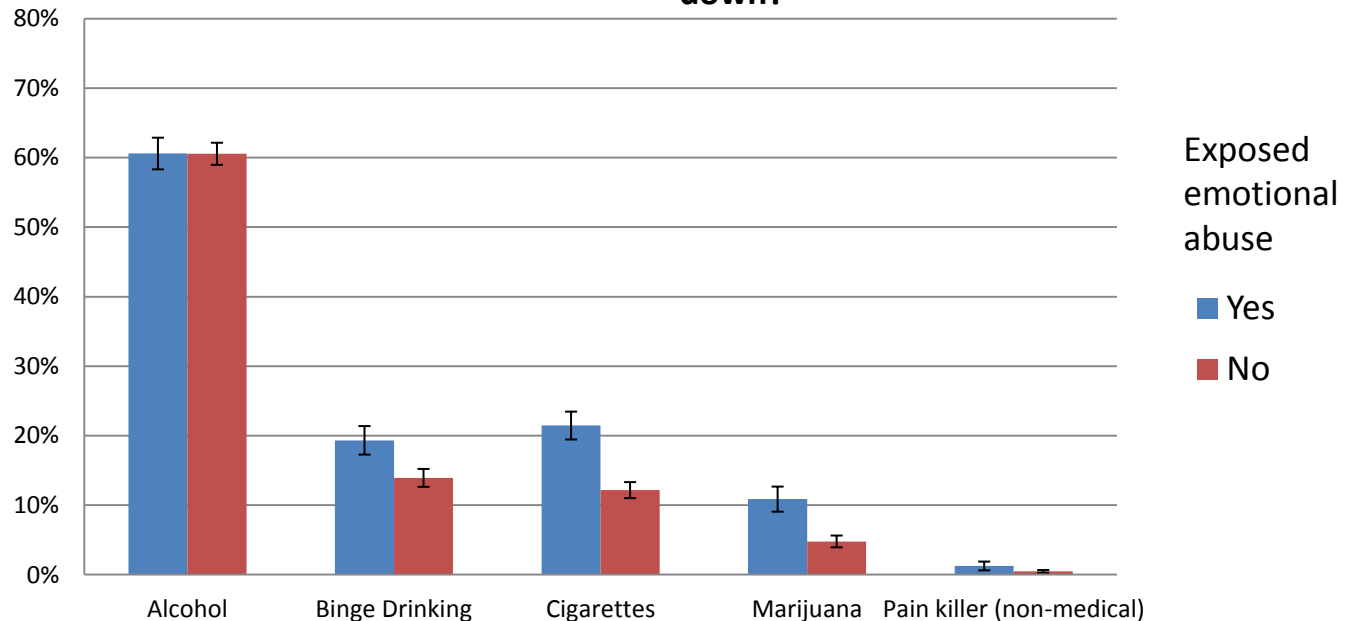
One

Department
Vision
Mission
Core set of Values

Adverse Childhood Experiences

Emotional Abuse:

Did parents or adults in home ever swear at you, insult you, or put you down?



Respondents' Current Substance Use

Source: Behavioral Risk Factors Surveillance System (BRFSS), 2010



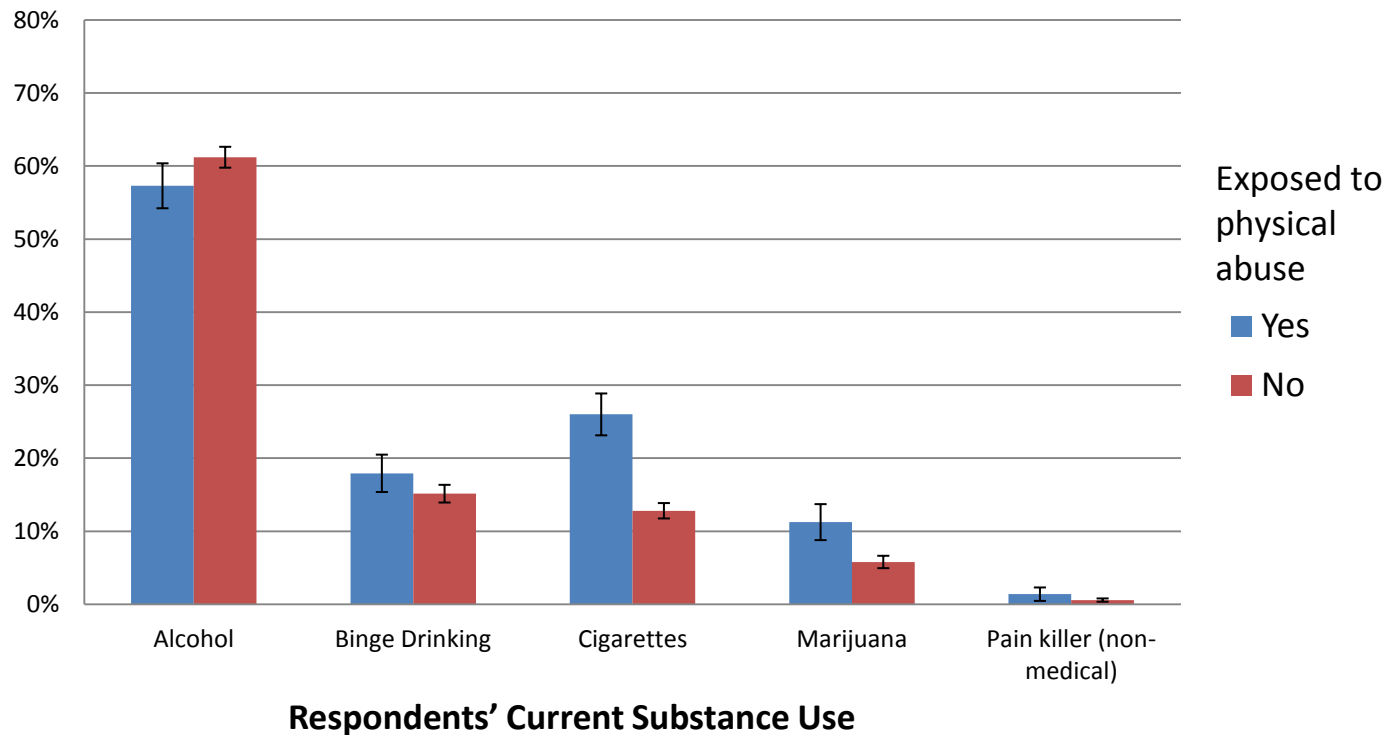
One

Department
Vision
Mission
Core set of Values

Adverse Childhood Experiences

Physical Abuse:

Did parents or adults ever hit, beat, kick, or physically hurt you?



Source: Behavioral Risk Factors Surveillance System (BRFSS), 2010



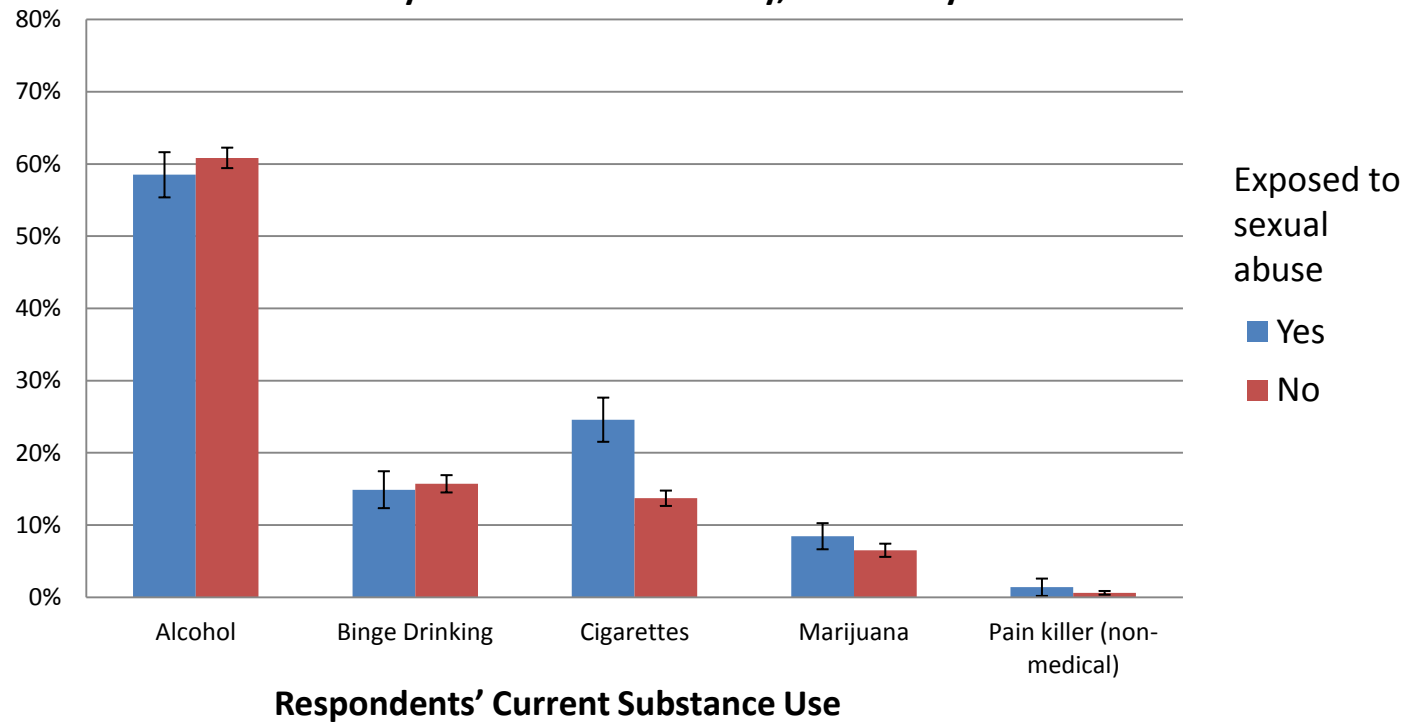
One

Department
Vision
Mission
Core set of Values

Adverse Childhood Experiences

Sexual Abuse:

Did anyone at least 5 years older than you ever touched you sexually, tried to make you touch them sexually, or forced you to have sex?



Source: Behavioral Risk Factors Surveillance System (BRFSS), 2010



One

Department
Vision
Mission
Core set of Values

Adverse Childhood Experiences

Correlations between adverse childhood experiences and substance use (odds ratios)

	Drinking Alcohol	Binge Drinking	Smoking Cigarettes	Using Marijuana	Using Pain Killers to Get High
Family Drinking	1.05	1.54	2.46	2.28	2.92
Family Drug Use	1.01	2.47	3.36	4.15	5.18
Family Mental Illness	1.15	1.51	1.77	2.28	1.96
Household Memembers Incarcerated	0.81	1.93	3.90	4.31	6.92
Parents Divorced or Separated	1.01	1.43	2.39	1.95	1.49
Family Adult Physical Fight	0.84	1.12	1.96	1.66	1.08
Physical Abuse	0.85	1.22	2.39	2.06	2.40
Emotional Abuse	1.00	1.48	1.97	2.43	2.66
Sexual Abuse	0.91	0.94	2.05	1.33	2.26

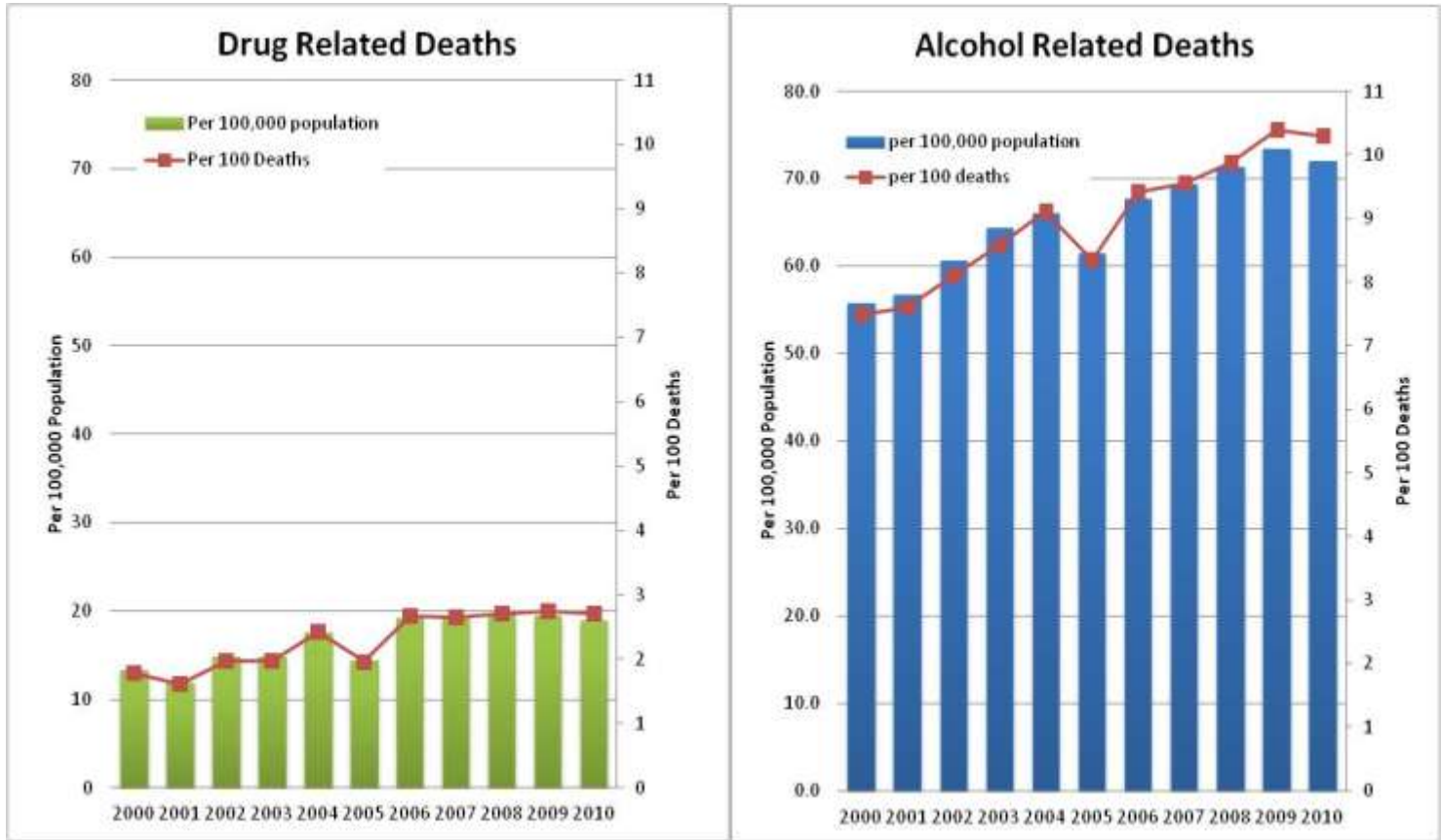
Source: Behavioral Risk Factors Surveillance System (BRFSS), 2010. Shaded odds ratios are statistically significant at the .05 level.



One

Department
Vision
Mission
Core set of Values

Alcohol or Drug Related Deaths



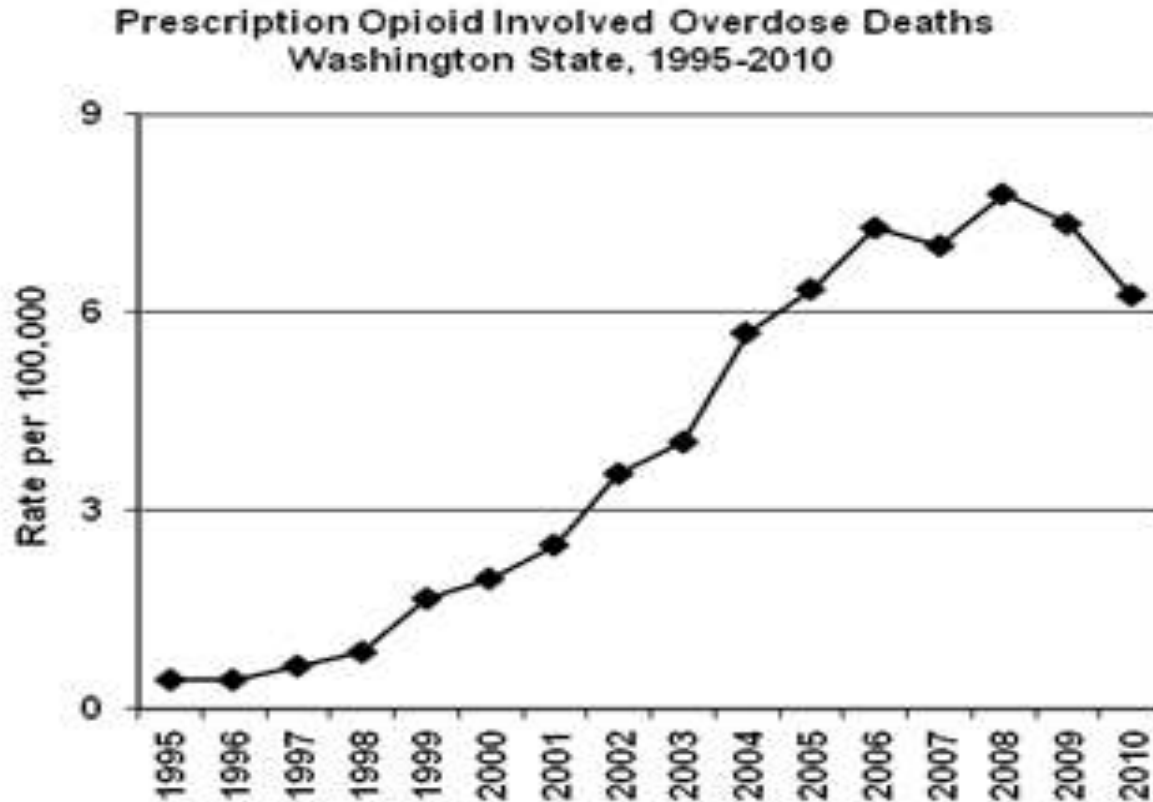
Source: Department of Health, Center for Health Statistics, Death Certificate Data File



One

Department
Vision
Mission
Core set of Values

Prescription Opioid Involved Deaths



Source: Comprehensive Hospital Abstract Reporting System (CHARS)

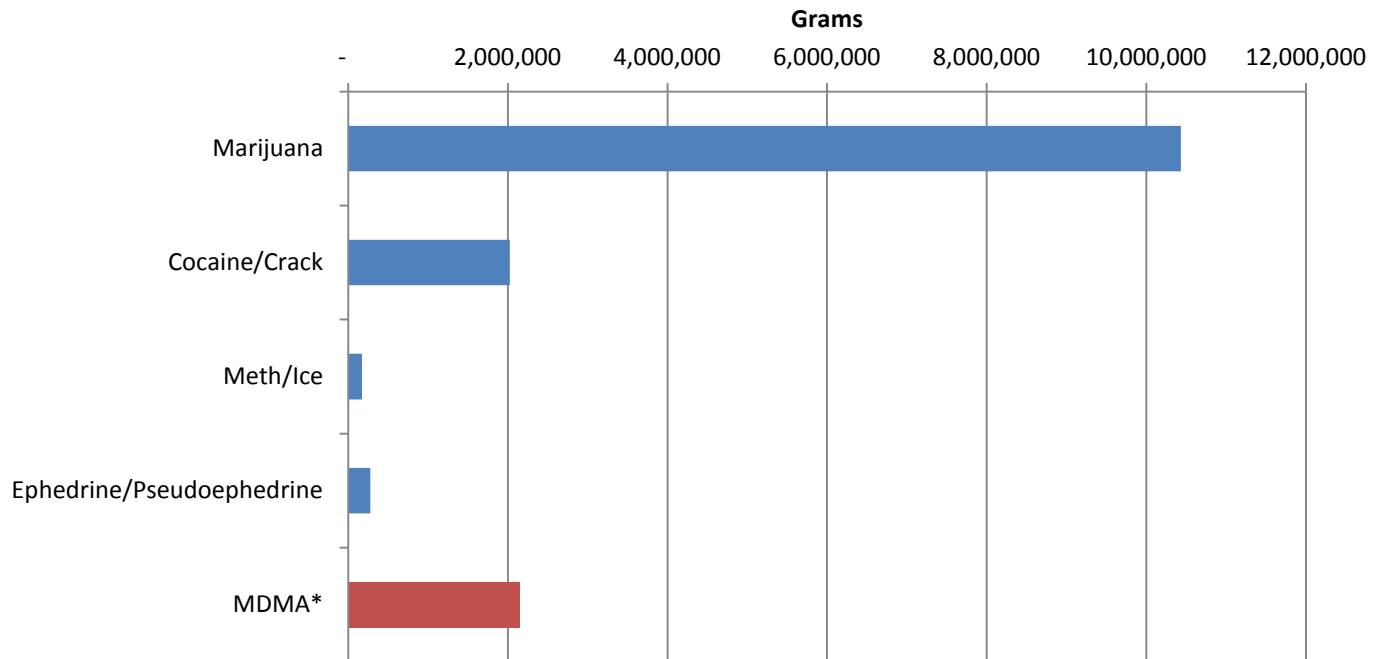


One

Department
Vision
Mission
Core set of Values

Drug Trafficking

Drug Seizures by Northwest High Intensity Drug Trafficking Area-Funded Enforcement Initiatives (2008)



* In dosage units

Source: Northwest HIDTA Threat Assessment and Strategy for Program year 2010



One

Department
Vision
Mission
Core set of Values

Back to Initial Framework

- Considering
 - Rates
 - Trends
 - Economic Impacts
 - Social Impacts



One

Department

Vision

Mission

Core set of Values

Needs Assessment Matrix

Ranking	Alcohol	Tobacco	Marijuana	Meth	Prescription Drug
Prevalence Rates (youth/adult) *	1 st -youth 1 st -adults	3 rd -youth 2 nd -adults	2 nd -youth 3 rd -adults	5 th -youth NA- adults	4 th -youth 4 th -adults
Trends (youth/adult) **	no trend change	no trend change	youth - increasing adult - no change	no trend change	no trend change
Economic Impacts	1 st	3 rd	Illicit drugs: 2 nd		
Social Impact	<ul style="list-style-type: none"> • Deaths: alcohol greater impact than illicit drugs • Drinking and driving: Age dependent • Traffic injuries and fatalities: Age dependent • School related consequences: Mixed 				
OVERALL	1st	3rd	2nd	5th	4th

Notes: *Substances are ranked from the highest prevalence to the lowest. The first number indicates the ranking for youth and the second number indicates the ranking for adults (+18). **Substances are ranked based on trends. The first number indicates the ranking for youth and the second number indicates the ranking for adults (18+). With the exception of youth marijuana use, there has not been any discernible increasing or decreasing trends in these five substances. Youth marijuana use, therefore, was given the highest ranking.



One

Department
Vision
Mission
Core set of Values

Next Steps

- Are there other indicators?
- Are there other ways to consider current data?
- How should we frame a state prevention focus?



One

Department

Vision

Mission

Core set of Values

Background Information

- Source information for surveys and data
 - BRFSS
 - NSDUH
 - HYS
 - PRAMS
 - FARS



One

Department

Vision

Mission

Core set of Values

Behavioral Risk Factors Surveillance System (BRFSS)

- National and statewide annual telephone survey
- Collects information on health behaviors and preventive practices
- Respondents: adults 18 years and older
- Sample size (2010): approximately 20,000 in Washington State



One

Department

Vision

Mission

Core set of Values

National Survey on Drug Use and Health (NSDUH)

- Nationwide annual survey conducted through computerized interviews
- Collects data on the use of tobacco, alcohol, illicit drugs (including non-medical use of prescription drugs) and mental health Indicators
- Respondents: individuals 12 years and older
- Sample size: approximately 70,000 nationally



One

Department

Vision

Mission

Core set of Values

Health Youth Survey (HYS)

- Statewide school survey conducted biannually
- Collects data on health risk behaviors that contribute to morbidity, mortality, and social problems among youth
- Respondents: students in the 6th, 8th, 10th and 12th grade
- Sample size (2010): 211,331 students from 1,145 schools



One

Department

Vision

Mission

Core set of Values

Pregnancy Risk Assessment Monitoring System (PRAMS)

- National and statewide mail and telephone survey
- Collects data on new mothers' behaviors and experiences before, during, and shortly after pregnancy
- Respondents: new mothers 2 to 6 months after delivering a baby
- Sample size: approximately 1,800 surveys mailed each year in Washington with about a 76% response rate



One

Department

Vision

Mission

Core set of Values

Fatality Analysis Reporting System (FARS)

- Nationwide census with data regarding fatal injuries suffered in motor vehicle traffic crashes
- Maintained by National Highway Traffic Safety Administration (NHTSA)
- Data available yearly from 1975
- Collects data on crashes involving a motor vehicle traveling on a traffic way customarily open to the public and result in the death of a person within 30 days of the crash



One

Department

Vision

Mission

Core set of Values

Measuring Serious Psychological Distress (BRFSS)

- Measured by Kessler-6 distress scale
- Serious psychological distress – defined as a score of 13 or more on K-6



One

Department

Vision

Mission

Core set of Values

Estimating Rates of Mental Illness (NSDUH)

- Psychological distress measured by Kessler-6 distress scale
- Functional impairment measured by the World Health Organization Disability Assessment Schedule (WHODAS) and the Sheehan Disability Scale (SDS)
- Conducted clinical interviews with a subsample to determine mental illnesses
- Rates of mental illness estimated using statistical models based on K-6, WHODAS/SDS, and parameters determined by the clinical interviews



One

Department

Vision

Mission

Core set of Values

Estimating Rates of Depression (NSDUH)

- Major depressive episode: defined as in DSM-IV - a period of at least 2 weeks when a person experienced a depressed mood or loss of interest or pleasure in daily activities and had a majority of specified depression symptoms
- Adult questions adapted from the National Comorbidity Survey Replication (NCS-R)
- Youth (12 to 17) questions adapted from the National Comorbidity Survey Adolescent (NCS-A)



One

Department

Vision

Mission

Core set of Values