

Cohort 3

Community Prevention and Wellness Initiative (CPWI)

Resources Assessment Webinar

Conducting a Resources Assessment

Division of Behavioral Health and Recovery

December 2013

Presented by:

Julia Greeson, Prevention System Manager

Scott Waller, Prevention Integration Lead

One

Department
Vision
Mission
Core set of Values

Poll

What stage is your coalition at in resources assessment?

- A. Haven't talked about it yet.
- B. Have a plan, but haven't collected info yet.
- C. Have collected information, but not reviewed.
- D. Have identified gaps in resources.

One

Department
Vision
Mission
Core set of Values

Training Objectives

Participants will:

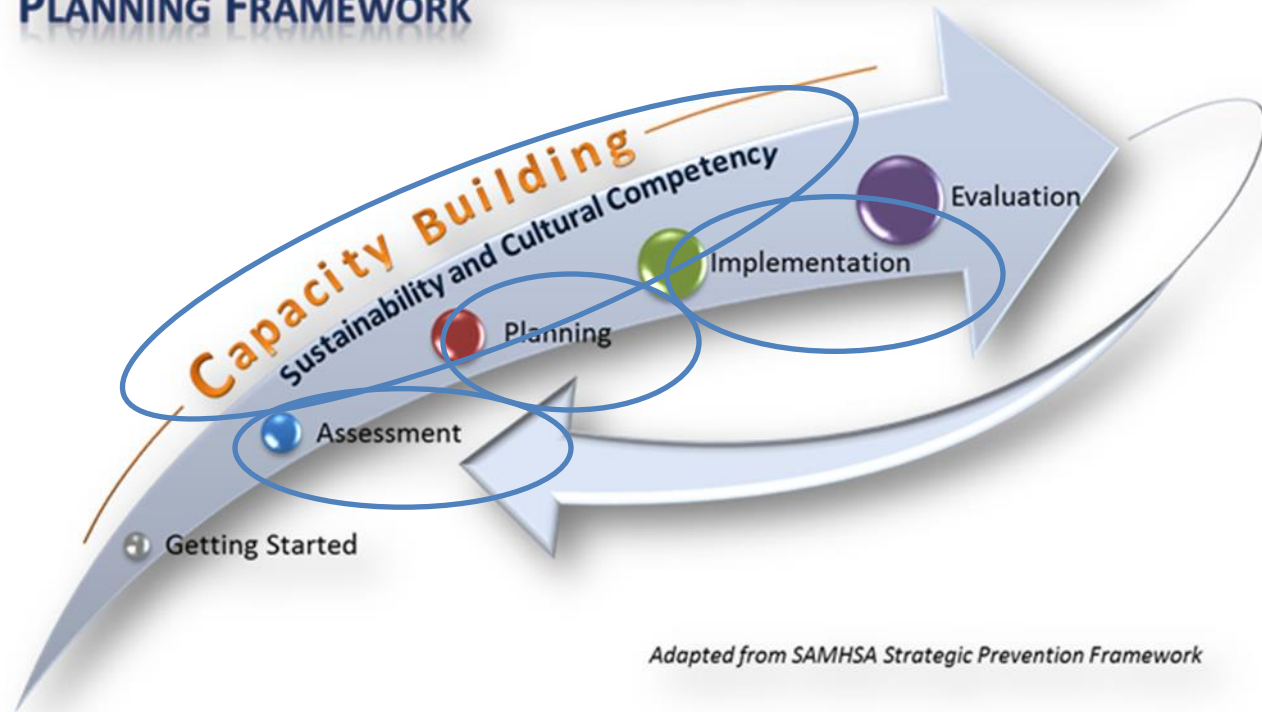
- Understand Resources Assessment key elements and purpose.
- Identify innovative community-friendly ways to make the contacts you need to learn about resources.
- Understand what information to collect on existing resources that addresses priorities identified during needs assessment.
- Get tools and examples for Resources Assessments.
- Plan next steps.

One

Department
Vision
Mission
Core set of Values

CPWI Planning Framework

DBHR COMMUNITY PREVENTION AND WELLNESS INITIATIVE PLANNING FRAMEWORK



Adapted from SAMHSA Strategic Prevention Framework

One

Department
Vision
Mission
Core set of Values

DBHR COMMUNITY PREVENTION AND WELLNESS INITIATIVE PLANNING FRAMEWORK

Capacity Building

Sustainability and Cultural Competency

Getting Started

Assessment

Planning

Implementation

Evaluation

Adapted from SAMHSA Strategic Prevention Framework

STRATEGIC PLANNING MODEL

Steps to Creating Great Communities
Maintaining and Improving the Quality of Community Life

How We'll Know
When We're There

Market Intelligence

Identify qualified suppliers
Understand industry trends
and cost structure

Requirements
Definition

Refine requirements
Standardize requirements

Customer
Warfighter
Taxpayer

Department
Vision
Mission
Core set of Values

Elements of a good Assessment

- Needs
- Resources
- Gaps



Completing a Resources Assessment

Today's Webinar:

1. Process
 2. Findings
- } Today we will cover these parts.

Next Webinar:

3. Analysis and Prioritization

One

Department
Vision
Mission
Core set of Values

Part One:

Process

Who? What? DO.

One

Department
Vision
Mission
Core set of Values

What is a Resources Assessment?

Definition: A resource assessment is a systematic process for examining the current resources in your community which are reducing risk factor and increasing protective factors.

One

Department
Vision
Mission
Core set of Values

What is a “Resource”?



“Resources” are funding, program, policy, initiative, people, and/or services that:

- Can be activated to reduce the likelihood of alcohol, tobacco, and other drugs misuse/abuse.
- Promote healthy communities.
- Address local conditions.
- “Can be directed toward solving the specific problems identified as top community concerns.” *- CADCA, Coalition Academy*

One

Department
Vision
Mission
Core set of Values

Discussion - Identifying Resources

Finding resources that are related to your priorities is a multi-step process.

- Who in the community might serve youth, families and community?
- Who can you talk with?
- How do you meet people?
- How to translate their work into prevention language

One

Department
Vision
Mission
Core set of Values



Chat

Please type your answer into the chat box.

- What is the value-added to your coalition's strategic planning in completing a resources assessment?

One

Department
Vision
Mission
Core set of Values

Benefits of a Resources Assessment

A community resource assessment will assist you to:

- Identify key resources needed to support your Strategic Plan.
- Build collaboration among service providers.
- Recognize the EBP's and environmental efforts currently available in your community.
- Identify gaps in services and avoid duplication in services.
- Promote the work and efforts on the coalition to build capacity and sustainability.

One

Department
Vision
Mission
Core set of Values

Benefits of a Resource Assessment

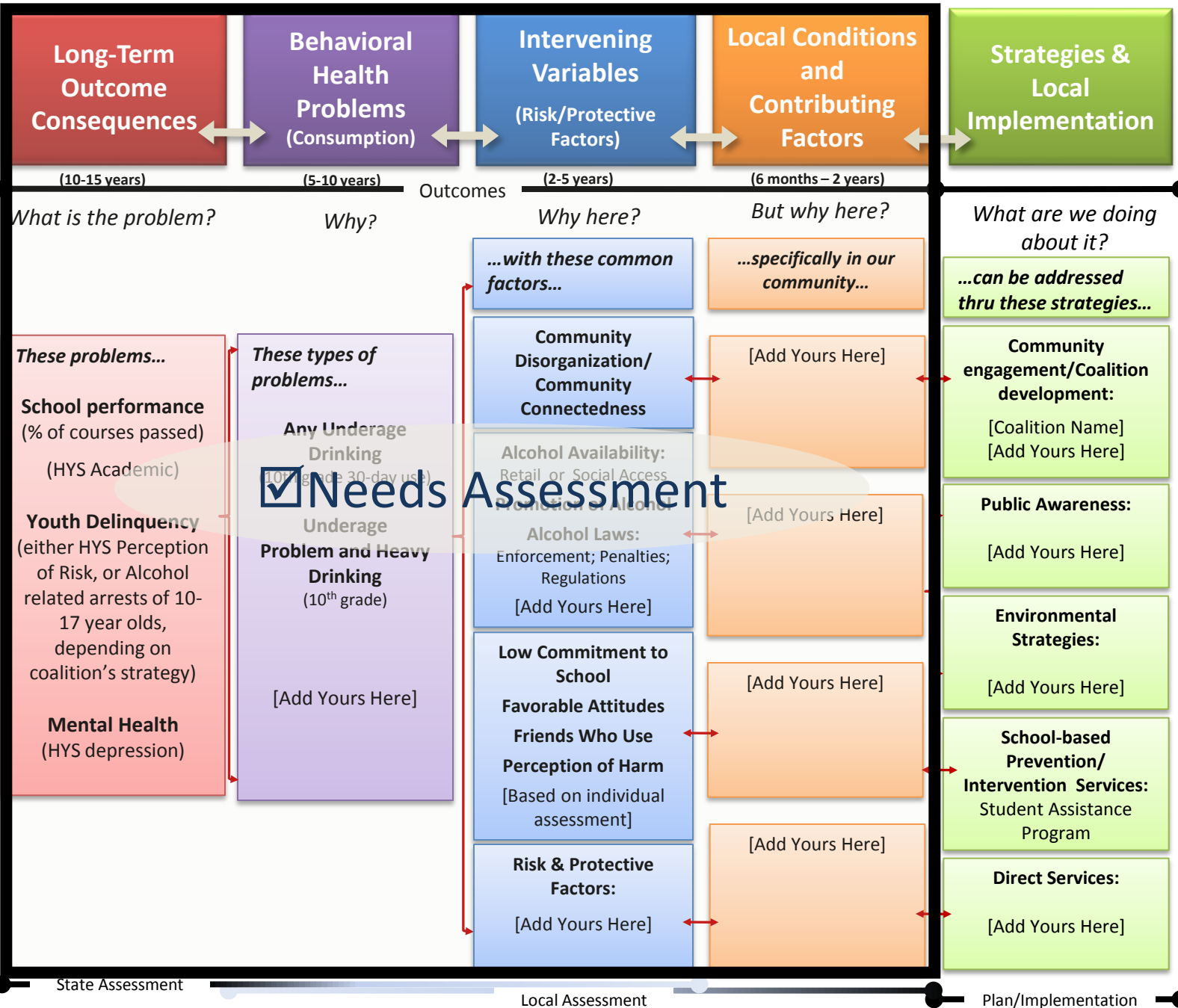
So that..

- Ensure you are putting your time and money where it will have the greatest impact
- Ensure you are creating a comprehensive prevention strategy for your community
- Ensure you are effectively impacting your priority risk and protective factors

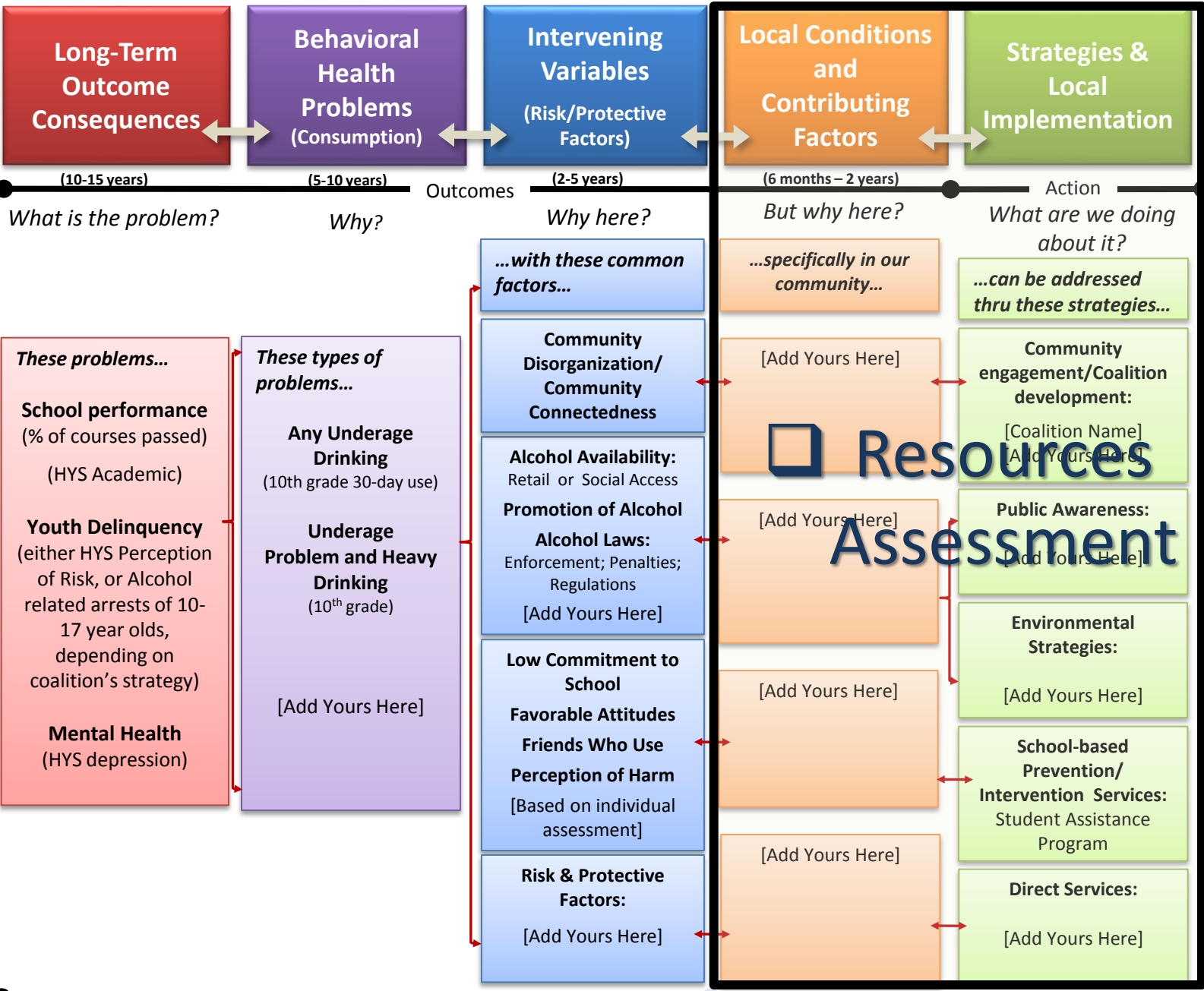
One

Department
Vision
Mission
Core set of Values

[Name] Coalition Logic Model



[Name] Coalition Logic Model



What resources do we have, that we want to include in our plan?

What resources do we need in order to impact the local conditions we want to change?

Resources Assessment

Completing a Resources and Gaps Assessment

Five Steps...

1. Establish your process.
2. Identify, collect, and compile information on each existing resources which address the priority risk and protective factors.
3. Determine gaps in resources.
4. Determine key findings.
5. Integrate information into Strategic Plan.

One

Department
Vision
Mission
Core set of Values

Step 1:

Establish your process

- Gather coalition members to work on Resources Assessment.
- Be clear about your goals and objectives for your Resources Assessment.
- Decide on what information you want to collect.
- Decide on how you will collect information.
- Establish timeframe for collection.

Go forth and collect! ...

One

Department
Vision
Mission
Core set of Values

Discussion

- How are coalition members involved in your Resources Assessment?
 - Collect Information
 - Develop collection tool
 - Review information
 - Present information
 - Write summary of Resources Assessment for Strategic Plan

One

Department
Vision
Mission
Core set of Values

Step 1:

Creating your Collection Tool

- What do you want to know?
- At the end how do you want to present information?
- What information supports determining local conditions and strategy selection?
- What information will support implementation of strategies?

One

Department
Vision
Mission
Core set of Values

Step 2:

Collecting Information

Types of information to be collected:

- Resource/Provider contact info
- Funding sources and duration
- Program/Activity – description, location, when service is offered, type of service, participant cost
- What risk/protective factors and local conditions are addressed
- Target populations - populations served, numbers served
- Type of prevention strategy – CSAP strategies, domain, sector
- Evaluation results

One

Department
Vision
Mission
Core set of Values

Step 2:

Collecting Information

Use the following to identify resources:

- Coalition members
- Directories - Human services, Telephone, Helpline/Crisis Clinic, health department
- City halls (especially in small towns)
- One-stop centers / Food banks
- Medical providers - community health clinic
- Key informants / prevention service providers
- Surveys

What else???

One

Department
Vision
Mission
Core set of Values

Step 2:

Collecting the Information

Community Resources Assessment – Sample Questions

NOTE: You will want to select questions that support what you want and need to learn about your community to support your strategic planning. Also consider the format to meet your needs and method for collection.

1. Program Name: _____
2. Organization Contact Information:
 - Contact Name _____
 - Address _____
 - Phone _____
 - Email _____
 - Website _____
3. Program Description (brief): _____
4. Funding?
 - Funding Type *Federal, state, private, other* _____
 - Funding cycle *One-time only, annual, biennial* _____
 - Current funding period *month/year-month/year* _____
 - Amount \$ _____
5. Does the program impact priority intervening variables and contributing factors?
 - No Yes, which one(s): _____
6. If you answered yes to number 5 (above), which programs or services impact the priority intervening variables and/or contributing factors? And please describe how the program or service impacts the intervening variables and/or contributing factors. _____
7. Level of prevention (check only the primary level of prevention for the program):
 - Universal Selective Indicated Environmental
8. Age group(s) served by the program (check all that apply):
 - Infancy and early childhood (0-4yrs)
 - Middle Childhood (5-11yrs)
 - Pre-Adolescence (12-14yrs)
 - Adolescence (15-17yrs)
 - Young Adulthood (18-24yrs)
 - Adulthood (25-44yrs)
 - Older Adulthood (45-64yrs)
 - Senior Adulthood (65 and older)

1

One

Department
Vision
Mission
Core set of Values



Step 2:

Collecting the Information


WellSpring
 COMMUNITY NETWORK
 - Growing community wellness -

Name: _____ Date: _____
 Phone: _____ Mailing Address: _____
 Email: _____ Organization/Affiliation: _____

WellSpring's Vision:
We are a vibrant community where everyone feels valued and contributes to the wellbeing of all.

WellSpring's Mission:
Through awareness, advocacy, and action we will create a community culture that strengthens families, reduces substance use, and promotes mental, physical, emotional, and spiritual wellness.

- Describe your motivation for being involved with WellSpring. Why is strengthening community important to you? Who do you advocate for or represent?
- What role do you see WellSpring playing to help you accomplish your goals (personal and/or agency). How do you see yourself and/or agency helping WellSpring in meeting its mission?
- How can WellSpring help members maintain enthusiasm for the task?

PO Box 170 Long Beach, Washington 98631 Email: admin@wellspringpacific.com Phone: 360-783-1090



One

Department
 Vision
 Mission
 Core set of Values

Step 2:

Collecting Information

Interviewing a community resource provider:

1. Deliver the 1 minute opening comments.
 - ✓ Introduce yourself
 - ✓ Coalition you are representing
 - ✓ Prevention Redesign Initiative Planning Process
 - ✓ Resource and Gaps Assessment
 - ✓ Information being collected about resources
 - ✓ Importance/relevance of the information
2. Ask if they would like to participate in the effort.
3. Ask questions to gather information on their resource(s). (See handout for ways to do this.)
4. Thanks!

One

Department
Vision
Mission
Core set of Values

Poll

- How difficult have you found it to collect your resources information?
 - Very difficult
 - Somewhat difficult
 - Not too difficult
 - Not difficult at all

One

Department
Vision
Mission
Core set of Values

Step 2:

Compiling your Information

- What do you want to know in the end?

- How will you display information in a way that helps you make decisions?
 - Information listing (Directory)
 - Charts and graphs
 - Maps

One

Department
Vision
Mission
Core set of Values

Chat

Please type your answer into the chat box.

- What methods have you used or will likely use to display your information?

One

Department
Vision
Mission
Core set of Values

Step 2:

Information Listing

SPE Resource Directory
DRAFT 7.20.12

Department of Health
PO Box 47855
Olympia, WA 98504-7855
www.doh.wa.gov

SPE Contact:
Sue Grinnell
360-236-3687
sue.grinnell@doh.wa.gov

Tobacco Program

Lead contact:
Paul Davis
paul.davis@doh.wa.gov
360-236-3642

Coordinated School Health Manager
Washington State Department of Health
Healthy Communities Office
Community Based Prevention Program
111 Israel Rd SE
PO Box 47848

Resource addresses these areas that are prioritized based on our review of data:

- ✓ Underage drinking
- ✓ Marijuana abuse
- ✓ Tobacco prevention

Below is a list of other related issues.

- ✓ Tobacco Cessation

Resource using these strategies for addressing these issues

- ✓ Other Educational programs
- ✓ Law enforcement
- ✓ Community engagement/coalition development

Specific data indicators your agency/organization used in planning/determining and monitoring for the need to support this "resource"

There are dozens of BRFSS and HYS questions that we track. The most important are: 10th grade 30 day use of tobacco, Adult smoking rate, Low income smoking rate, and Exposure to secondhand smoke by youth and adults.

Which population(s) does this "resource" primarily target? (check all that apply)

- ✓ Minority or other underserved populations
- ✓ Low income, public housing

Estimated number of people served/reached with this "resource" state fiscal year 2011 (Jul 2010 - Jun 2011)?
We believe that we serve the entire state's population with our services since we do primary prevention and law enforcement, so that would be about 6.5 million people.

8 | Page

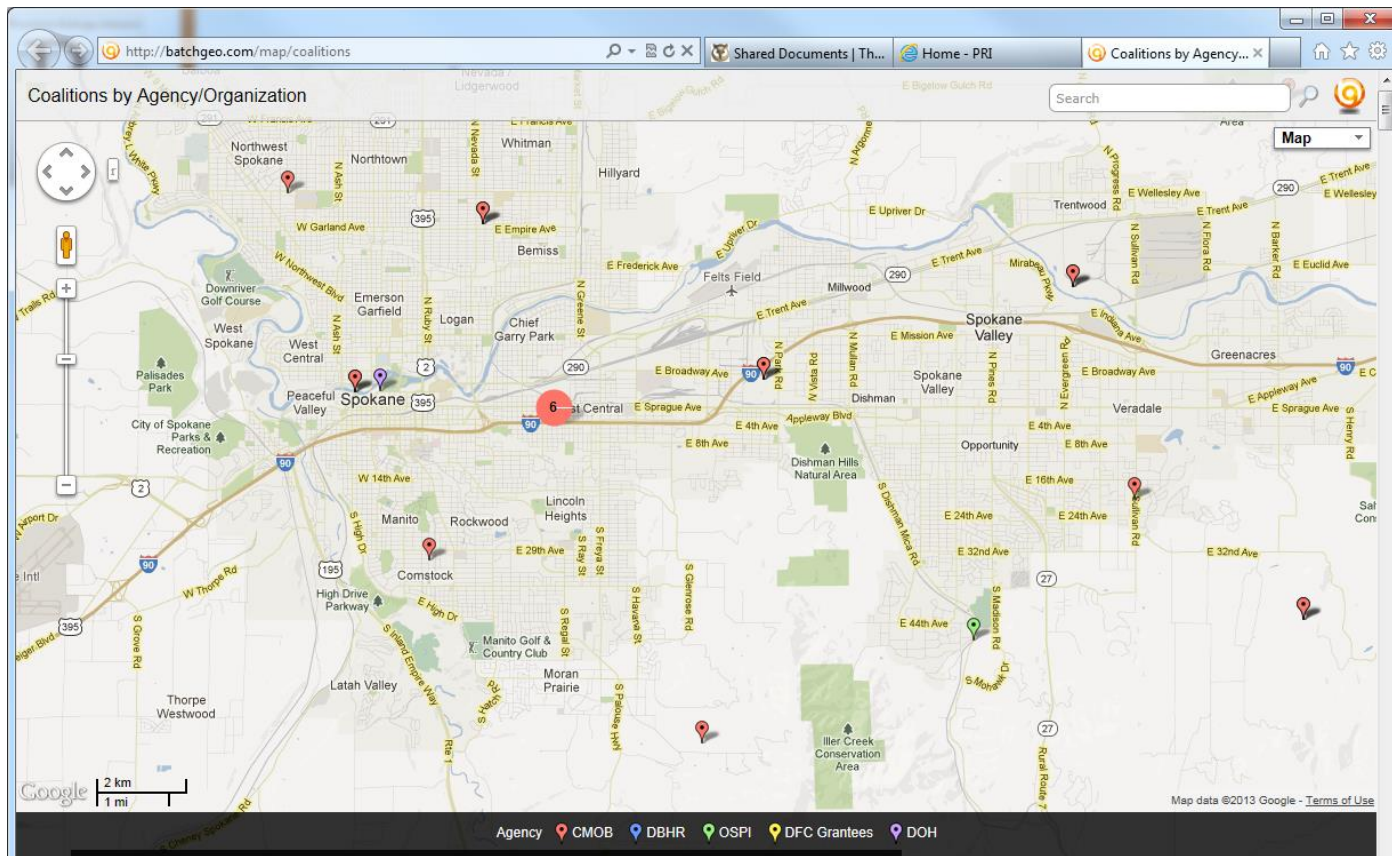
One

Department
Vision
Mission
Core set of Values



Step 2:

Mapping



One

Department
Vision
Mission
Core set of Values

Step 2:

Mapping

The screenshot shows the batchgeo.com website interface with a navigation menu and a form for pasting location data. Below the form is a Microsoft Excel spreadsheet with the following data:

State	County	City	Program	Agency	Zip Code
WA	Benton	Pasco	Coalitions in @ \$6,600 CM Funding; ma	CMOB	99301
WA	Benton	Kennewick	Coalitions in @ \$6,600 CM Funding; ma	CMOB	99337
WA	Benton	Richland	Coalitions in @ \$6,600 CM Funding; ma	CMOB	99352
WA	Chelan	Wenatchee	Coalition in @ \$9,690 CM Funding; ma	CMOB	98801
WA	Clark	West Vancouver	Coalition in @ \$24,900 CM Funding; ma	CMOB	98660
WA	Cowlitz	Kelso	Coalitions in @ \$3,526 CM Funding; ma	CMOB	98626
WA	Cowlitz	Castle Rock	Coalitions in @ \$3,526 CM Funding; ma	CMOB	95611
WA	Cowlitz	Kalama	Coalitions in @ \$3,526 CM Funding; ma	CMOB	98625
WA	Grays Harbor	Aberdeen	Coalitions in @ \$2,432 CM Funding; ma	CMOB	98520
WA	Jefferson	Port Townsend	Coalition @ \$2,000 CM Funding; match	CMOB	98368
WA	Snohomish	Monroe	Coalitions in @ \$2,276 CM Funding; ma	CMOB	98272
WA	King	Skykomish	Coalitions in @ \$2,276 CM Funding; ma	CMOB	98288
WA	King	Seattle	Coalitions in @ \$2,276 CM Funding; ma	CMOB	98168
WA	King	Shoreline	Coalitions in @ \$2,276 CM Funding; ma	CMOB	98155
WA	King	Borhell	Coalitions in @ \$2,276 CM Funding; ma	CMOB	98021
WA	Lewis	Adna	Coalitions at and @ \$1,000 Cm Funding; CMOB	CMOB	98522
WA	Lewis	Centralla	Coalitions at and @ \$1,000 Cm Funding; CMOB	CMOB	98531
WA	Okanogan	Omak	Coalition in @ 5,000 CM Funding; match	CMOB	98841
WA	Okanogan	Omak	Coalition in Omak Middle School @ \$2,C	CMOB	98841
WA	Pierce	Tacoma and Rural Pierce Count	Coalitions in blocks and neighborhoods	CMOB	98444
WA	Skamania	Stevenson	Youth Coalitions in @ \$9,546 CM Fundr	CMOB	98648
WA	Skamania	Carson	Youth Coalitions in @ \$9,546 CM Fundr	CMOB	98610
WA	Snohomish	Mukilteo School District	Coalitions in @ \$2,000 CM Funding; ma	CMOB	98275
WA	Snohomish	Marysville	Coalitions in @ \$2,000 CM Funding; ma	CMOB	98270
WA	Spokane	Spokane, Spokane Valley, Deer	Washington Drug-Free Youth Coalitions	CMOB	99202
WA	Spokane	Spokane, Spokane Valley, Deer	Washington Drug-Free Youth Coalitions	CMOB	99202
WA	Spokane	Spokane, Spokane Valley, Deer	Washington Drug-Free Youth Coalitions	CMOB	99202
WA	Spokane	Spokane, Spokane Valley, Deer	Washington Drug-Free Youth Coalitions	CMOB	99207
WA	Spokane	Spokane, Spokane Valley, Deer	Washington Drug-Free Youth Coalitions	CMOB	99205
WA	Spokane	Spokane, Spokane Valley, Deer	Washington Drug-Free Youth Coalitions	CMOB	99201
WA	Spokane	Spokane, Spokane Valley, Deer	Washington Drug-Free Youth Coalitions	CMOB	99207
WA	Spokane	Spokane, Spokane Valley, Deer	Washington Drug-Free Youth Coalitions	CMOB	99203
WA	Spokane	Spokane, Spokane Valley, Deer	Washington Drug-Free Youth Coalitions	CMOB	99223
WA	Spokane	Spokane, Spokane Valley, Deer	Washington Drug-Free Youth Coalitions	CMOB	99202

One

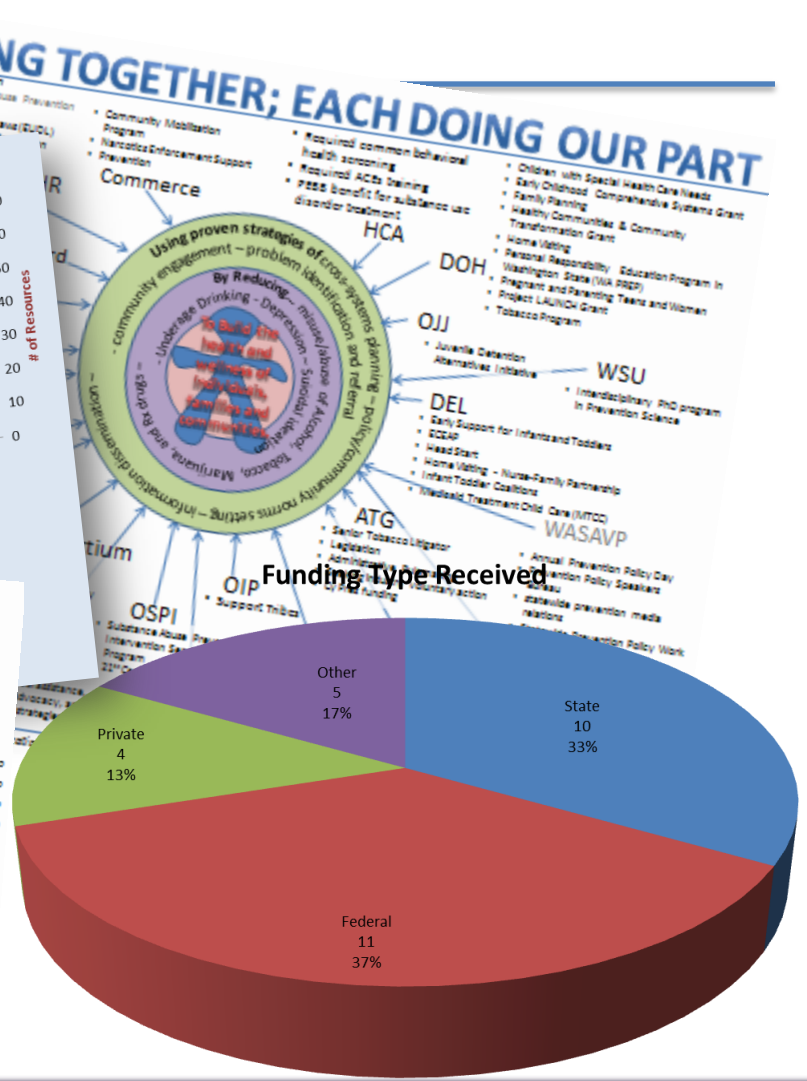
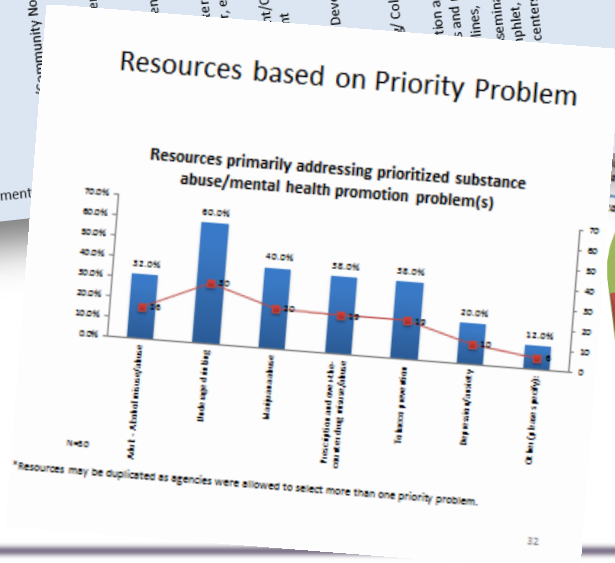
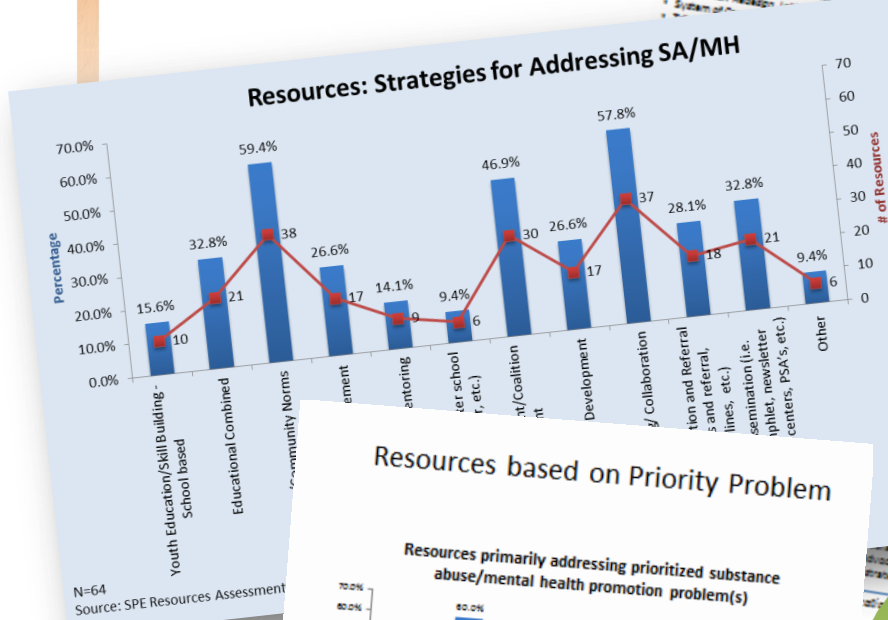
Department
Vision
Mission

Core set of Values

<http://batchgeo.com/>

Step 2:

Charts and Graphs



Step 2:

Examples from Cohort 1

- Well Spring Community Network –
 - Human Capital
 - Community Collaboration and small town political ties
 - Agency support and other service providers
 - Alternatives
 - Funding and in-kind donations
 - Training and Technical Assistance
 - Partnerships

(See p. 14-16)

One

Department
Vision
Mission
Core set of Values

Step 2:

Examples from Cohort 1

Darrington Prevention Intervention Community Coalition–

- The Darrington Family Support and Resource Center

Appendix I: resources

Resource Assessment		Programs & Services (in, or easily accessed by, the community)	
Forrest Service Volunteer Program	Darrington Junior Athletic Association	Darrington Family Support and Resource Center	
Church Youth Groups	Church Sunday Schools	Glad Tidings Home Economics Program	
Darrington Area Business Association	Hampton Lumber Mill Hardship Fund/ Adopt a Family	Darrington Senior Center Services	
Historical Society	Friends of the Library	Scouting Groups	
Darrington Community Center	Town Council	SFA Cooperative Learning	
Clinic Guild	Sauk-Suiattle Recreation	Darrington Recreation & Education Foundation	
Student Intervention/ Assistance Team	School Solutions Network	RAD – Recognizing Achievement in Darrington	
Free & Reduced Lunch Program	School-based Prevention/Intervention Services	Whitehorse Community Club	
4-H Club	PSE	Rotary Club	
Parenting Classes	Family Night	Fun Night	
Community Carnivals	Finance & Budgeting Classes	DSHS	
Gas Vouchers	Alumni Association	Sauk-Suiattle Preschool & Childcare	
Kids' Place	Skill Center	Running Start	
Job Corp.	McKinney Vento Services	Operation School Bell	
HS Leadership Class	Youth Coalition	Mentoring	
Local Institutions (stores, hospitals, restaurants, businesses, etc.)			
Trap/Shoot Club	Senior Center	Blue Grass Association	
Darrington School District	Kids' Place	City Hall	
Recovery Community (including AA and Alanon)	Darrington Area Business Association	Darrington Junior Athletic Association	
Darrington Family Support and	Snohomish County Government	Darrington Archery Association	

Center - The Resource Center
 providing everything from
 parenting classes to hosting
 after school programs &
 summer
 services

- Local Institutions
 Care facilities, institutions
 minded individuals used to
 his staff are key partners in
 forwarded to the community.
- Cultural resources
 Services Department -
 services to Sauk-Suiattle Tribal

staff is reversing public
 to enforcing underage drinking laws.

(See p. 19-20 and Appendix I)

One

Department
 Vision
 Mission
 Core set of Values

Resource Assessment – Challenges

Challenges which may arise during the resource assessment process include:

- Service providers are reluctant to cooperate: “Is this an audit?”
- Difficulty in collecting the information.
- Difficulty in analyzing information.
- Collecting too much information.
- Paralysis by analysis (too much information, no clear process for decision making).
- Running out of time.

What else???

So how do you get past these???

One

Department
Vision
Mission
Core set of Values

Summary:

Resources Assessment Process

So far we...

- ...discussed what a resource assessment is and why it is important
- ...identified programs and services in your community that impact your prioritized intervening variables and/or contributing factors
- ...discussed collecting information for the gaps assessment about the resources in the community

One

Department
Vision
Mission
Core set of Values

Next up

- Next Webinar: Gaps Analysis

Save the Date

January 10, 2014

1:30-3:00pm

One

Department
Vision
Mission
Core set of Values

Resources

- Community Coalition Guide
- The Athena Forum
- Prevention System Managers
- Cohort 1 and 2 Coordinators
- ESD Contacts

One

Department
Vision
Mission
Core set of Values

Questions?

- If you would like additional technical assistance please contact your Prevention System Manager or email PRtraining@dshs.wa.gov.

One

Department
Vision
Mission
Core set of Values