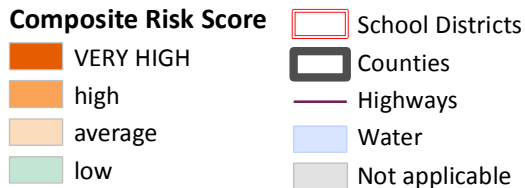
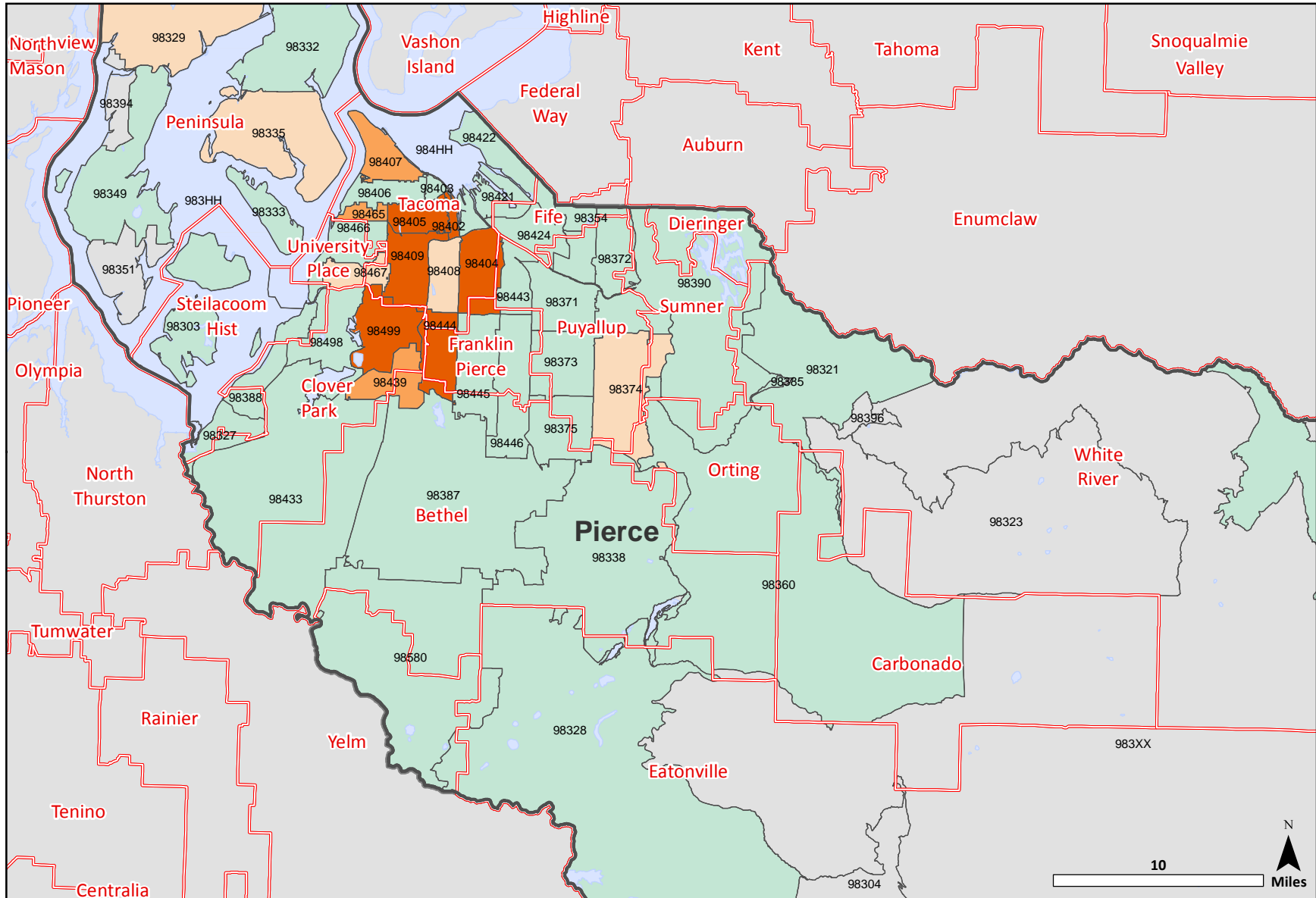


Composite Risk Score

by Zip Code Tabulation Area (ZCTA), Pierce County, 2009



DATA NOTES: Composite Risk Score is an average of risk scores for the following three domains: Poor Mental Health, Economic Deprivation, and Troubled Families. The domain risk scores were calculated using standardized indicators in each domain. Composite Risk Score for each ZCTA is mapped based on the standard deviations from the mean score. ZCTAs are generalized area representations of ZIP Code service routes developed by the Census Bureau for tabulating summary data from Census 2000.

SOURCES: DSHS Research and Data Analysis, Community Outcome and Risk Evaluation Geographic Information System (CORE-GIS). County, School District, and ZCTA boundaries from US Census Bureau 2009 TIGER files.

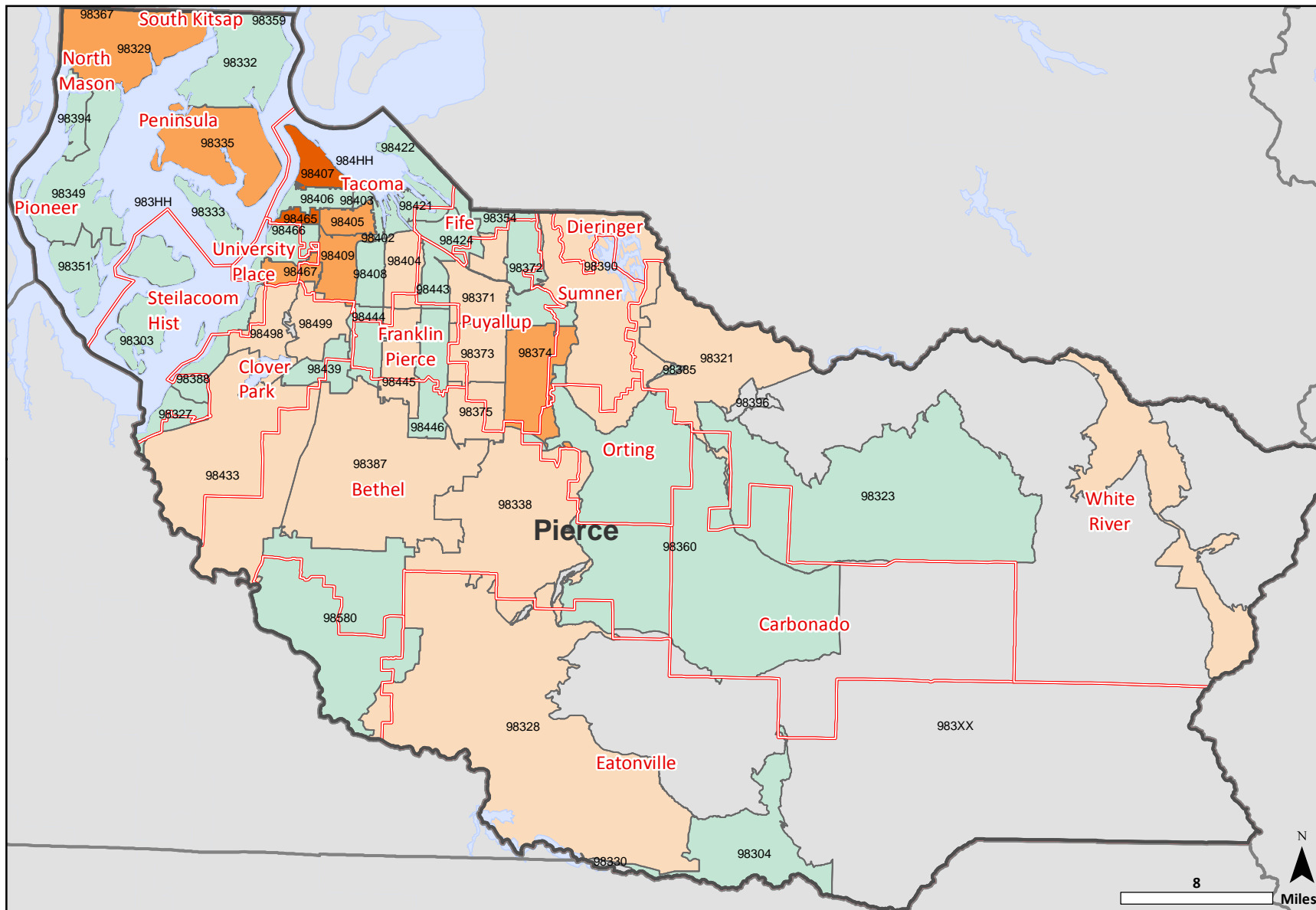


RDA Research & Data
Analysis Division

November 22, 2010

Suicide and Suicide Attempts (Age 10-17)

by Zip Code Tabulation Area (ZCTA), Pierce County, 2009



Rate compared to the State

- VERY HIGH
- high
- average
- low or very low
- School Districts
- Counties
- Water
- Not applicable

DATA NOTES: The number of adolescents (age 10-17) who committed suicide or were admitted to the hospital for suicide attempts, per 100,000 adolescents (age 10-17). Suicides are based on death certificate information. Suicide attempts are based on hospital admissions, but do not include admissions to federal hospitals. ZCTAs are generalized area representations of ZIP Code service routes developed by the Census Bureau for tabulating summary data from Census 2000.

SOURCES: DSHS Research and Data Analysis, Community Outcome and Risk Evaluation Geographic Information System (CORE-GIS). County, School District, and ZCTA boundaries from US Census Bureau 2009 TIGER files.

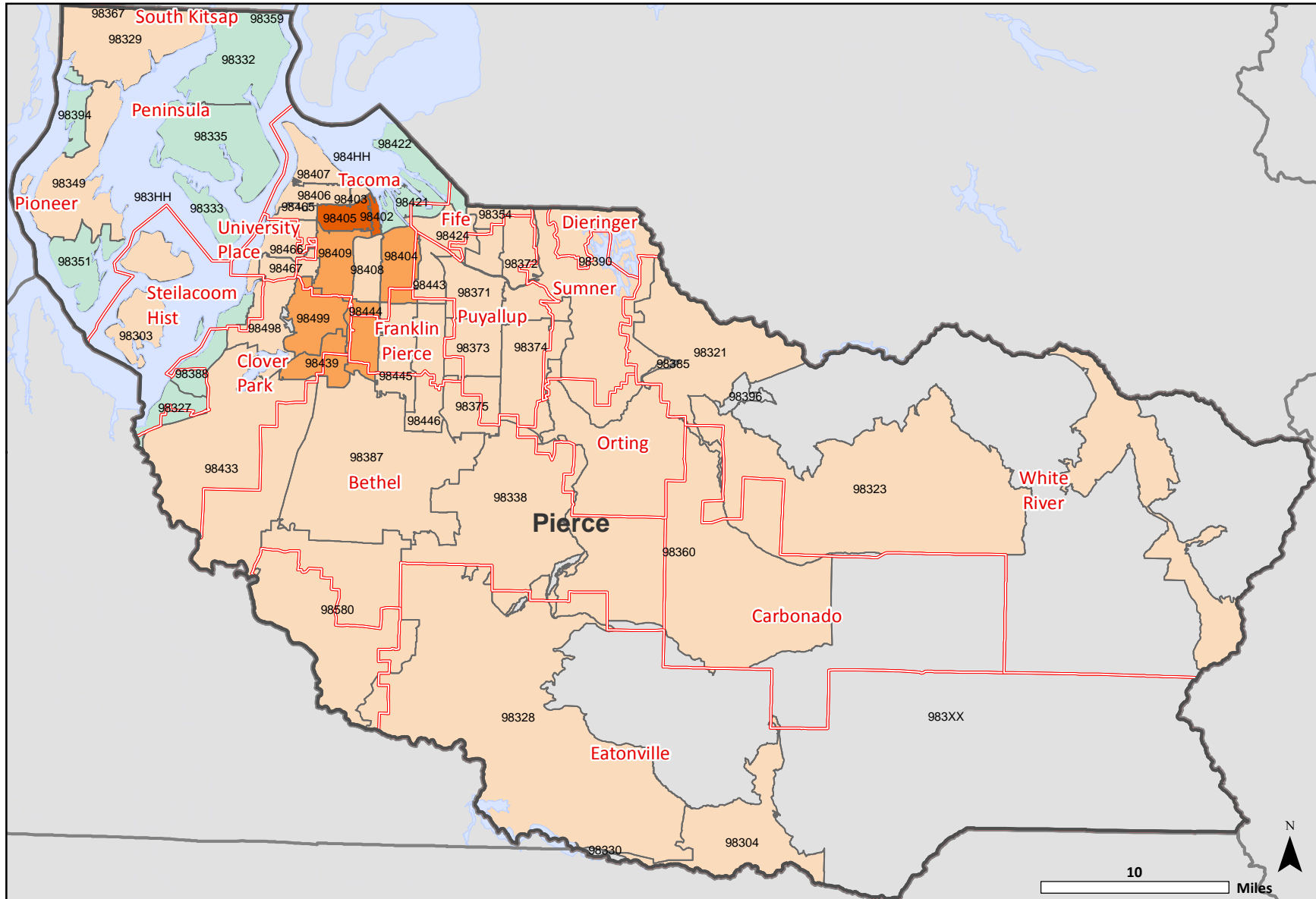


RDA Research & Data Analysis Division

December 13, 2010

Victims of Child Abuse and Neglect in Accepted Referrals

by Zip Code Tabulation Area (ZCTA), Pierce County, 2009



Rate compared to the State

- VERY HIGH
- high
- average
- low or very low
- School Districts
- Counties
- Water
- Not applicable

DATA NOTES: The annual number of children (age birth-17) identified as victims in reports to Child Protective Services that were accepted for further action, per 1,000 children (age birth-17). Children are counted more than once if they are reported as a victim more than once during the year. A 'referral' is a report of suspected child abuse. ZCTAs are generalized area representations of ZIP Code service routes developed by the Census Bureau for tabulating summary data from Census 2000.

SOURCES: DSHS Research and Data Analysis, Community Outcome and Risk Evaluation Geographic Information System (CORE-GIS). County, School District, and ZCTA boundaries from US Census Bureau 2009 TIGER files.

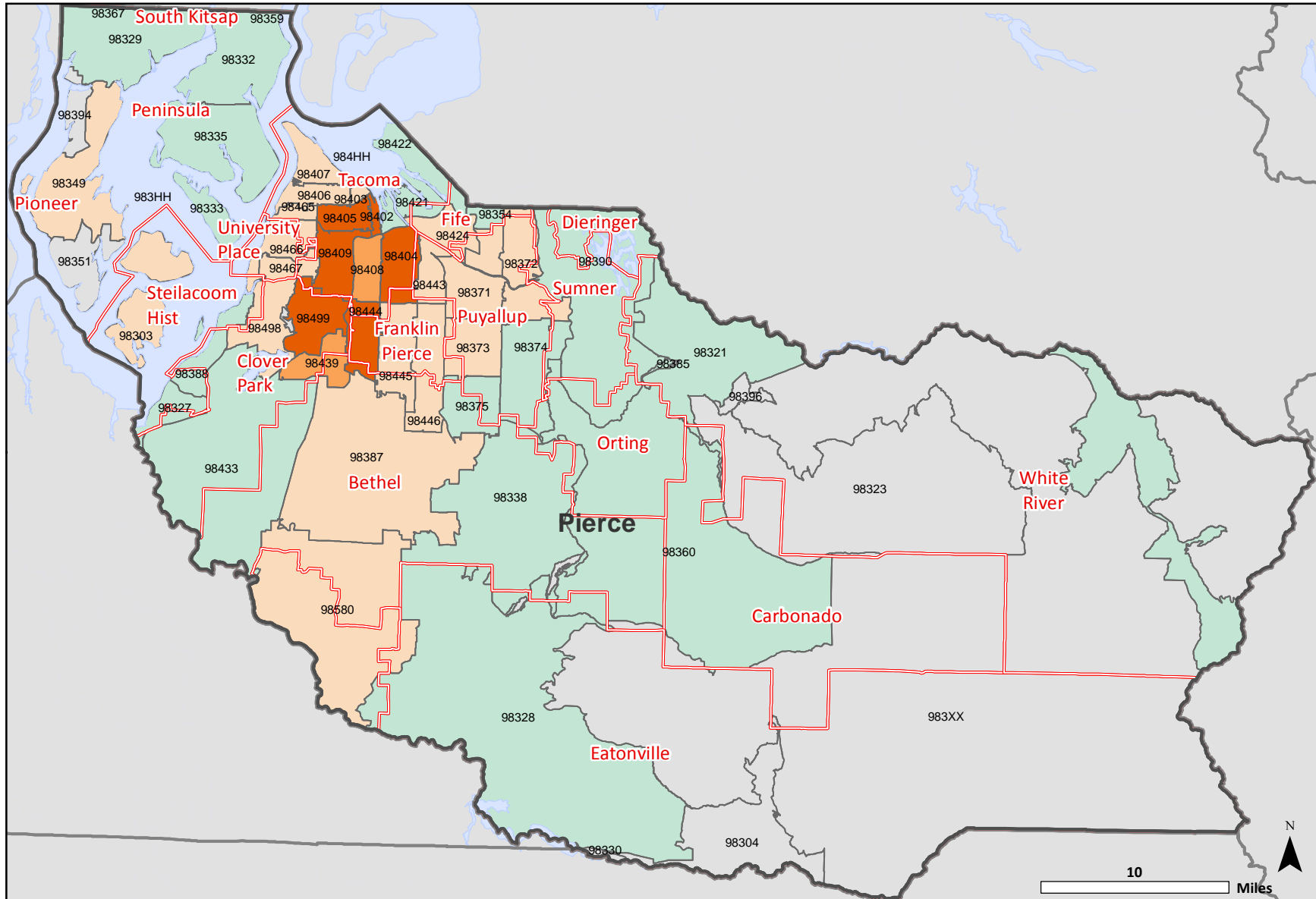


RDA Research & Data Analysis Division

December 14, 2010

Temporary Assistance to Needy Families (TANF), Child Recipients

by Zip Code Tabulation Area (ZCTA), Pierce County, 2009



Rate compared to the State

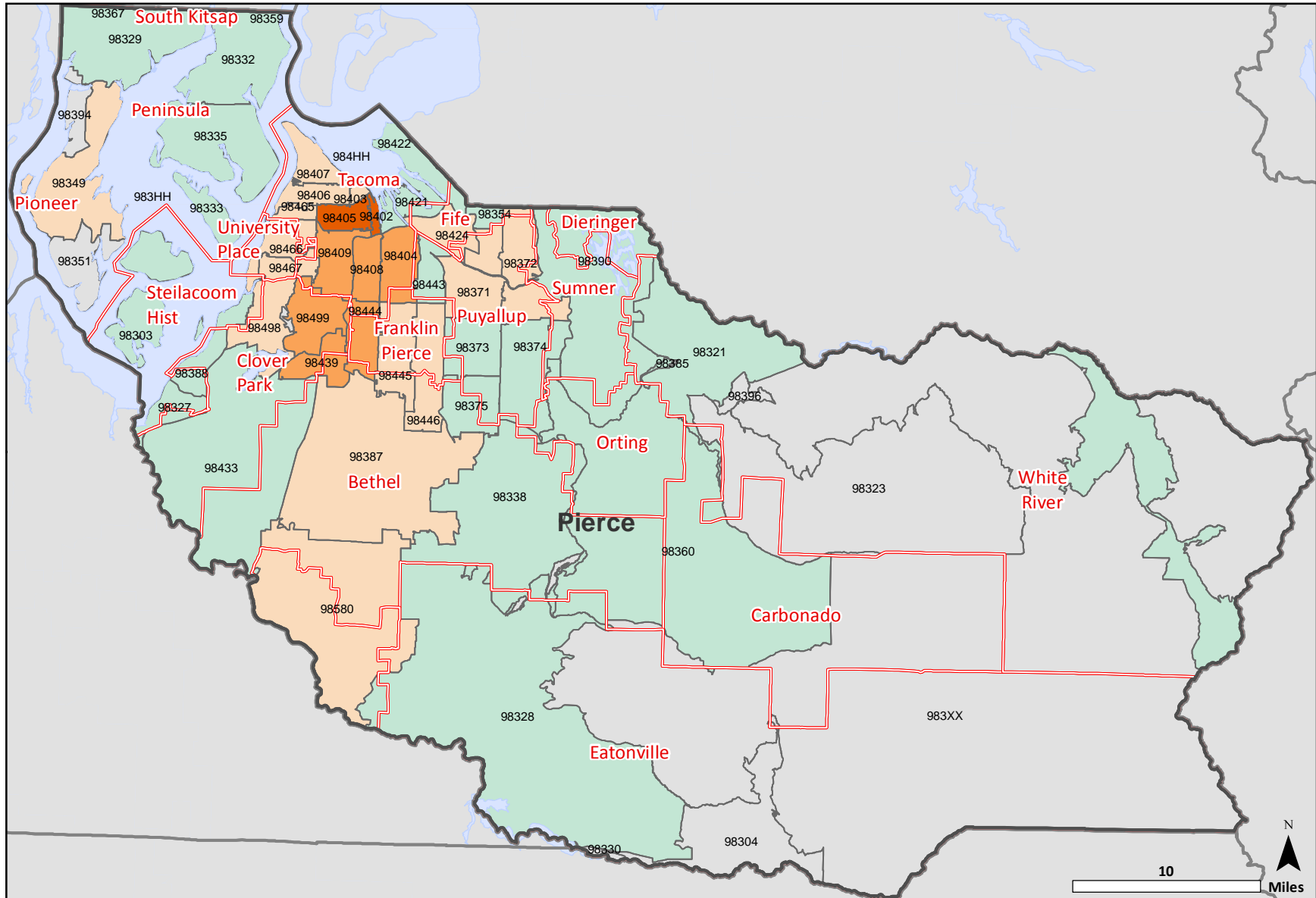
- VERY HIGH
- high
- average
- low or very low
- Not applicable
- School Districts
- Counties
- Water

DATA NOTES: The yearly number of children (age birth-17) participating in Aid to Families (AFDC/TANF) programs in the fiscal year, per 1,000 children (age birth-17). ZCTAs are generalized area representations of ZIP Code service routes developed by the Census Bureau for tabulating summary data from Census 2000.

SOURCES: DSHS Research and Data Analysis, Community Outcome and Risk Evaluation Geographic Information System (CORE-GIS). County, School District, and ZCTA boundaries from US Census Bureau 2009 TIGER files.

Food Stamp Recipients (All Ages)

by Zip Code Tabulation Area (ZCTA), Pierce County, 2009



Rate compared to the State

- VERY HIGH
- high
- average
- low or very low
- School Districts
- Counties
- Water
- Not applicable

DATA NOTES: The number of persons (all ages) receiving food stamps in the fiscal year, per 1,000 persons (all ages). ZCTAs are generalized area representations of ZIP Code service routes developed by the Census Bureau for tabulating summary data from Census 2000.

SOURCES: DSHS Research and Data Analysis, Community Outcome and Risk Evaluation Geographic Information System (CORE-GIS). County, School District, and ZCTA boundaries from US Census Bureau 2009 TIGER files.



RDA Research & Data
Analysis Division

December 14, 2010