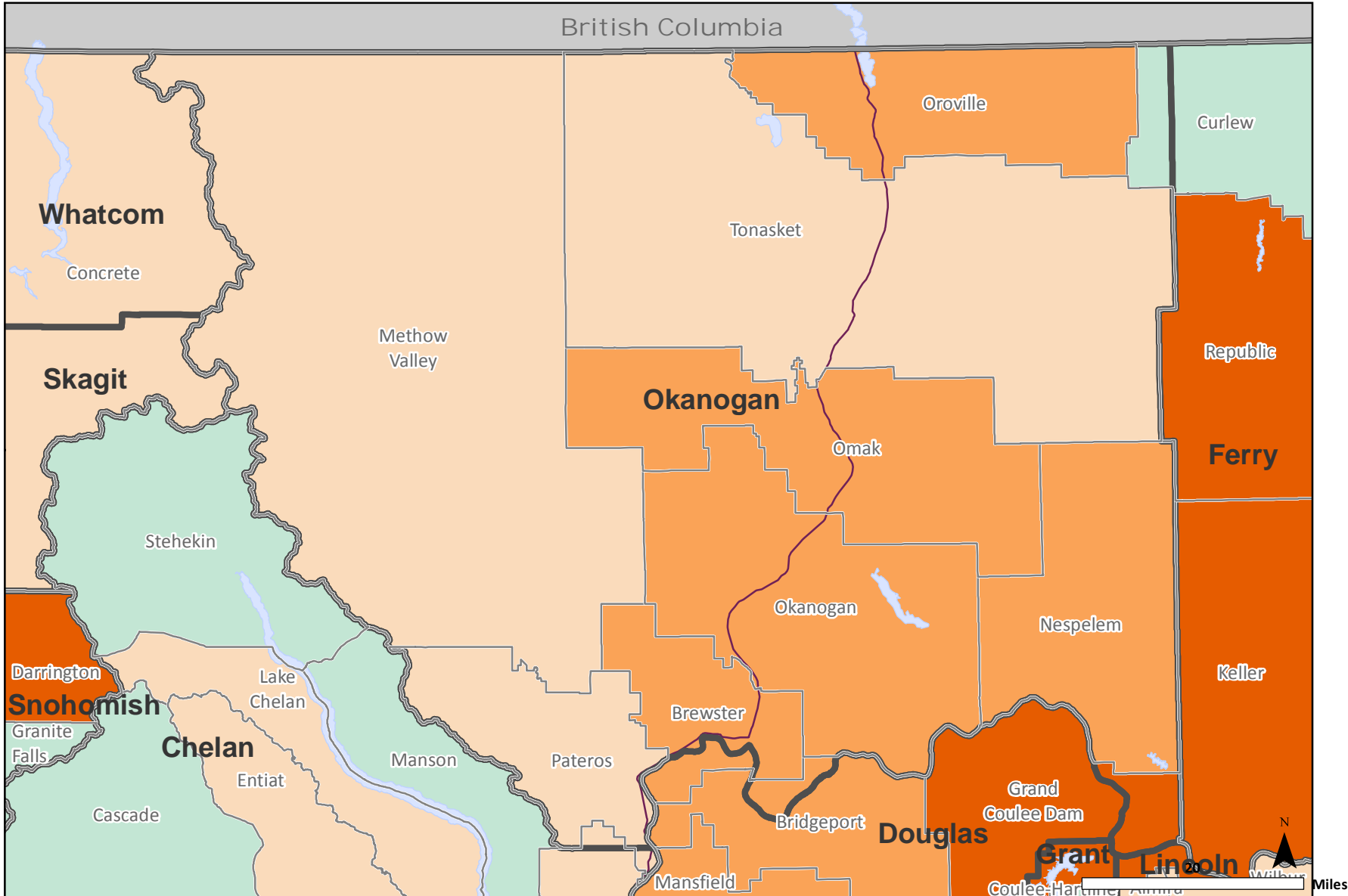


Composite Risk Score

by School District, Okanogan County, 2009



Rate compared to the State

- VERY HIGH
- high
- average
- low or very low
- Counties
- Highways
- Water
- Not applicable

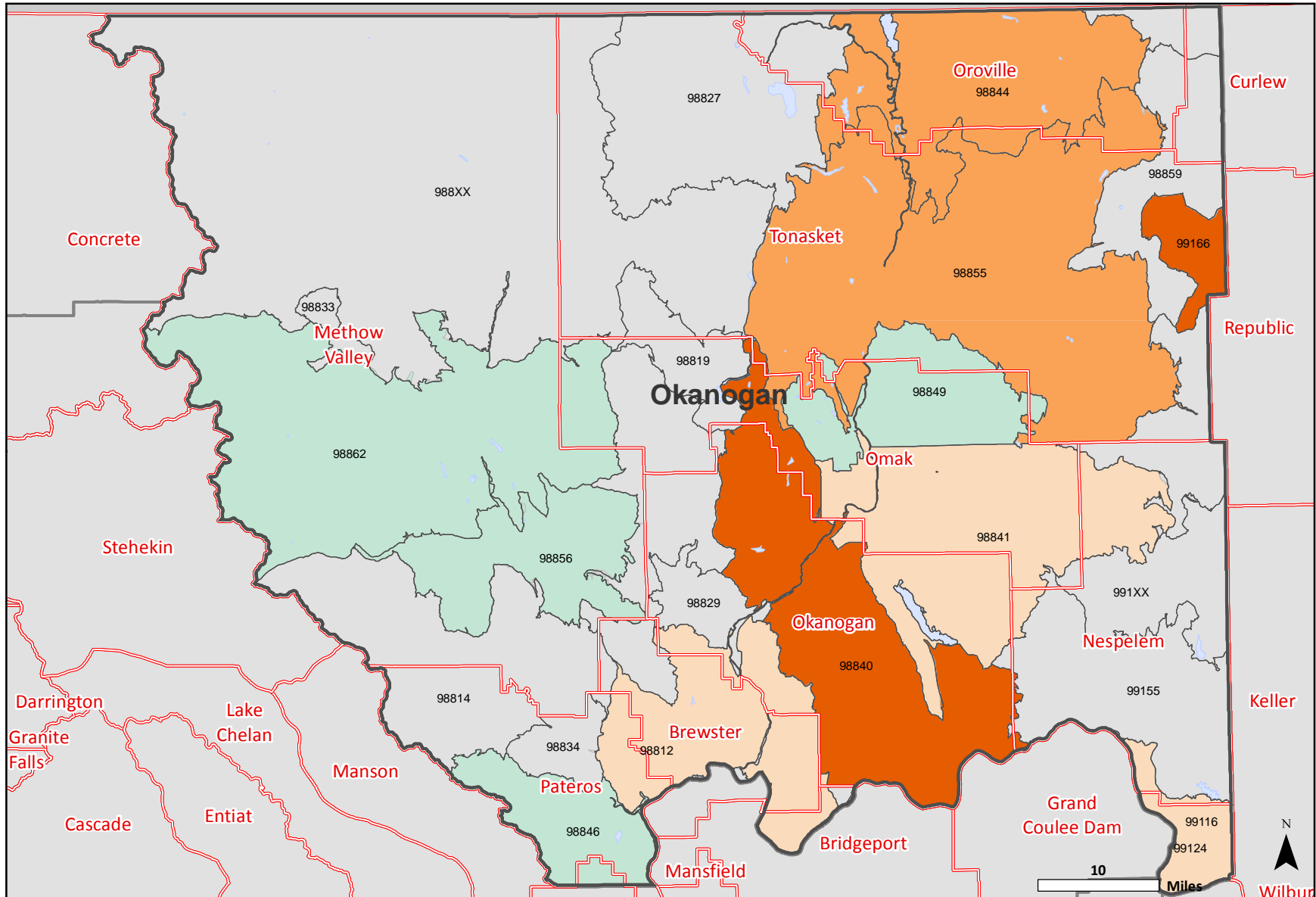
DATA NOTES: An average of risk scores for the following seven domains: Early Academic Failure, Criminal Acts, Poor Mental Health, Poverty, Prevalence of Drug or Alcohol Use, Academic Failure, and Troubled Families. The domain risk scores were calculated using standardized indicators in each domain.

SOURCES: DSHS Research and Data Analysis, Community Outcome and Risk Evaluation Geographic Information System (CORE-GIS)



Composite Risk Score

by Zip Code Tabulation Area (ZCTA), Okanogan County, 2009



Composite Risk Score

- VERY HIGH
- high
- average
- low

- School Districts
- Counties
- Highways
- Water
- Not applicable

DATA NOTES: Composite Risk Score is an average of risk scores for the following three domains: Poor Mental Health, Economic Deprivation, and Troubled Families. The domain risk scores were calculated using standardized indicators in each domain. Composite Risk Score for each ZCTA is mapped based on the standard deviations from the mean score. ZCTAs are generalized area representations of ZIP Code service routes developed by the Census Bureau for tabulating summary data from Census 2000.

SOURCES: DSHS Research and Data Analysis, Community Outcome and Risk Evaluation Geographic Information System (CORE-GIS). County, School District, and ZCTA boundaries from US Census Bureau 2009 TIGER files.

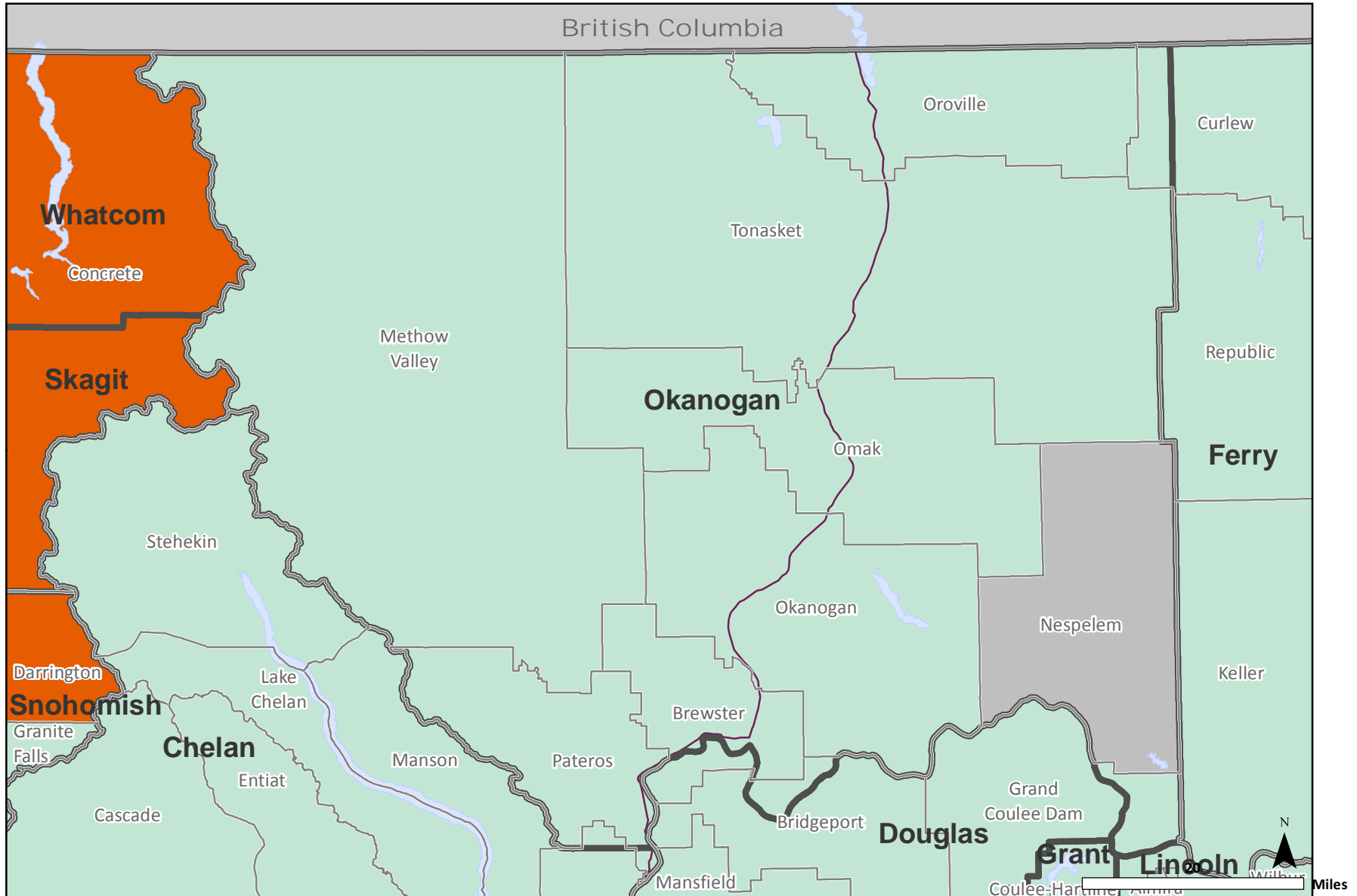


RDA Research & Data
Analysis Division

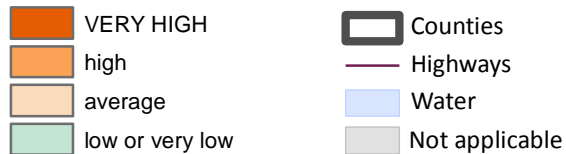
November 22, 2010

Suicide and Suicide Attempts (Age 10-17)

by School District, Okanogan County, 2009



Rate compared to the State



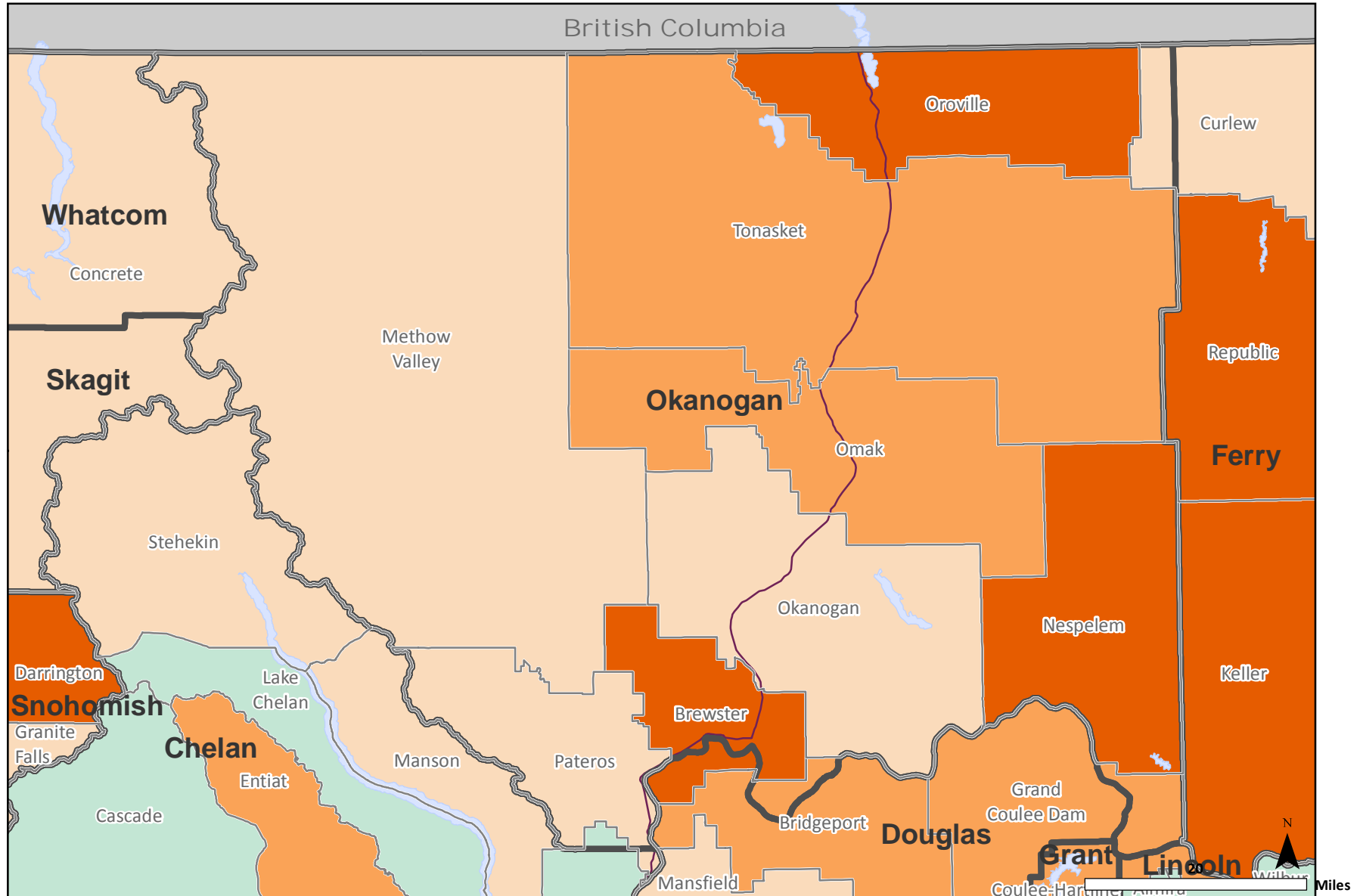
DATA NOTES: The number of adolescents (age 10-17) who committed suicide or were admitted to the hospital for suicide attempts, per 100,000 adolescents (age 10-17).

Suicides are based on death certificate information. Suicide attempts are based on hospital admissions, but do not include admissions to federal hospitals.

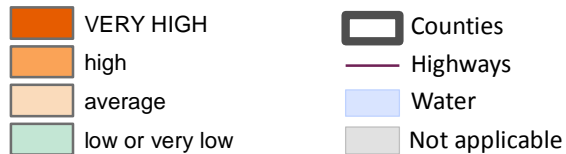
SOURCES: Washington State Department of Health, Comprehensive Hospital Abstract Reporting System (CHARS), Death Certificate Data, Population Estimates

Poor Academic Performance, Grade 4

by School District, Okanogan County, 2009



Rate compared to the State

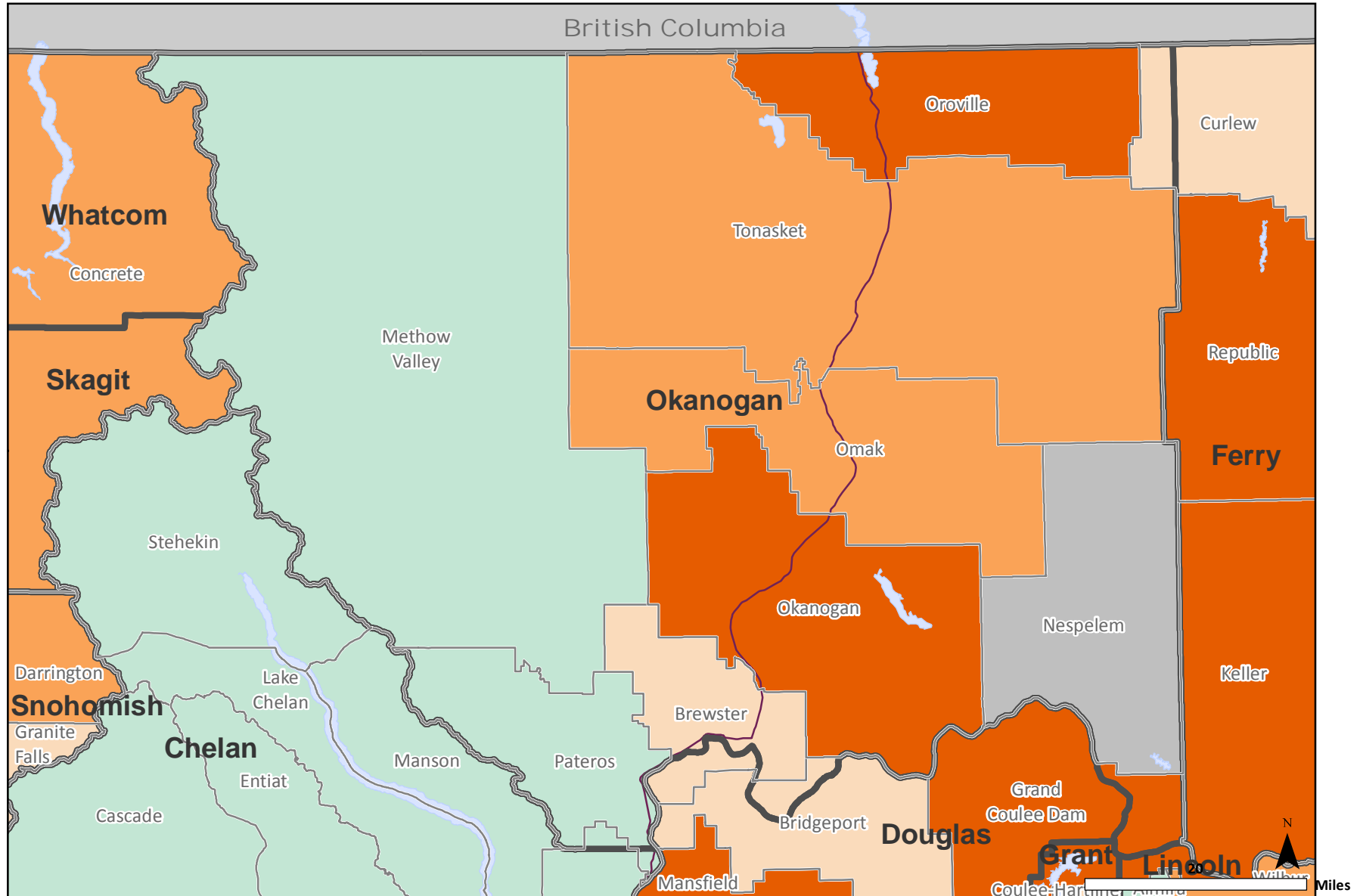


DATA NOTES: The annual number of 4th graders who failed one or more content areas in the Washington Assessment of Student Learning (WASL) as a percentage of all 4th graders

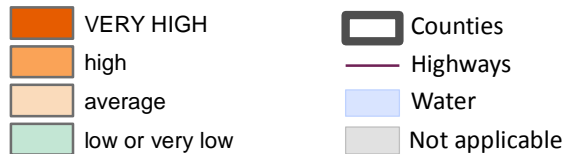
SOURCES: Washington State Office of Superintendent of Public Instruction, Instructional Programs, Curriculum and Assessment.

Victims of Child Abuse and Neglect in Accepted Referrals

by School District, Okanogan County, 2009



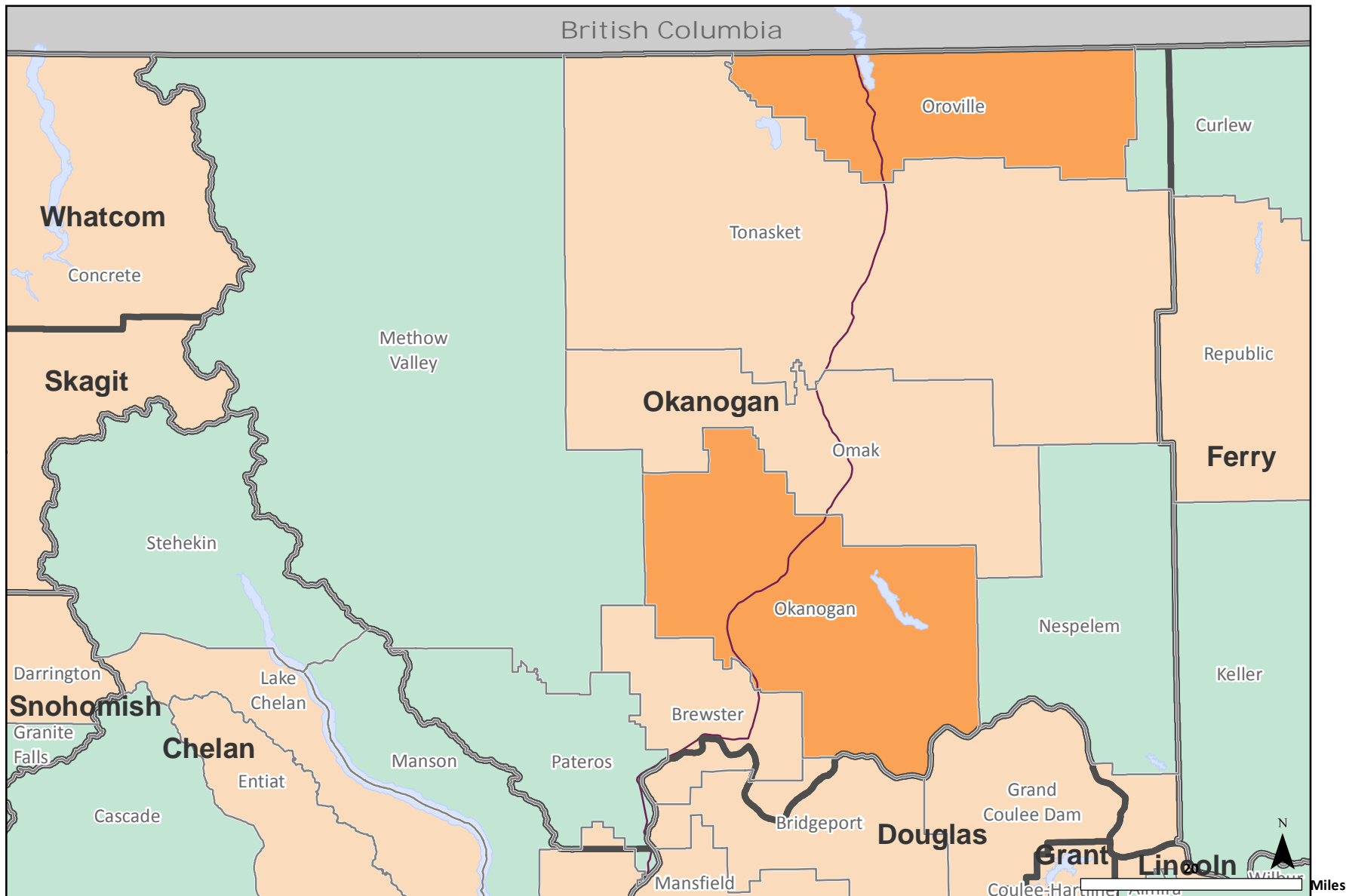
Rate compared to the State



DATA NOTES: The annual number of children (age birth-17) identified as victims in reports to Child Protective Services that were accepted for further action, per 1,000 children (age birth-17). Children are counted more than once if they are reported as a victim more than once during the year. A 'referral' is a report of suspected child abuse.

SOURCES: DSHS Children's Administration, Administrative Services, FamLink Data Warehouse. Population Estimates: Washington State Department of Health

Temporary Assistance to Needy Families (TANF), Child Recipients by School District, Okanogan County, 2009



Rate compared to the State

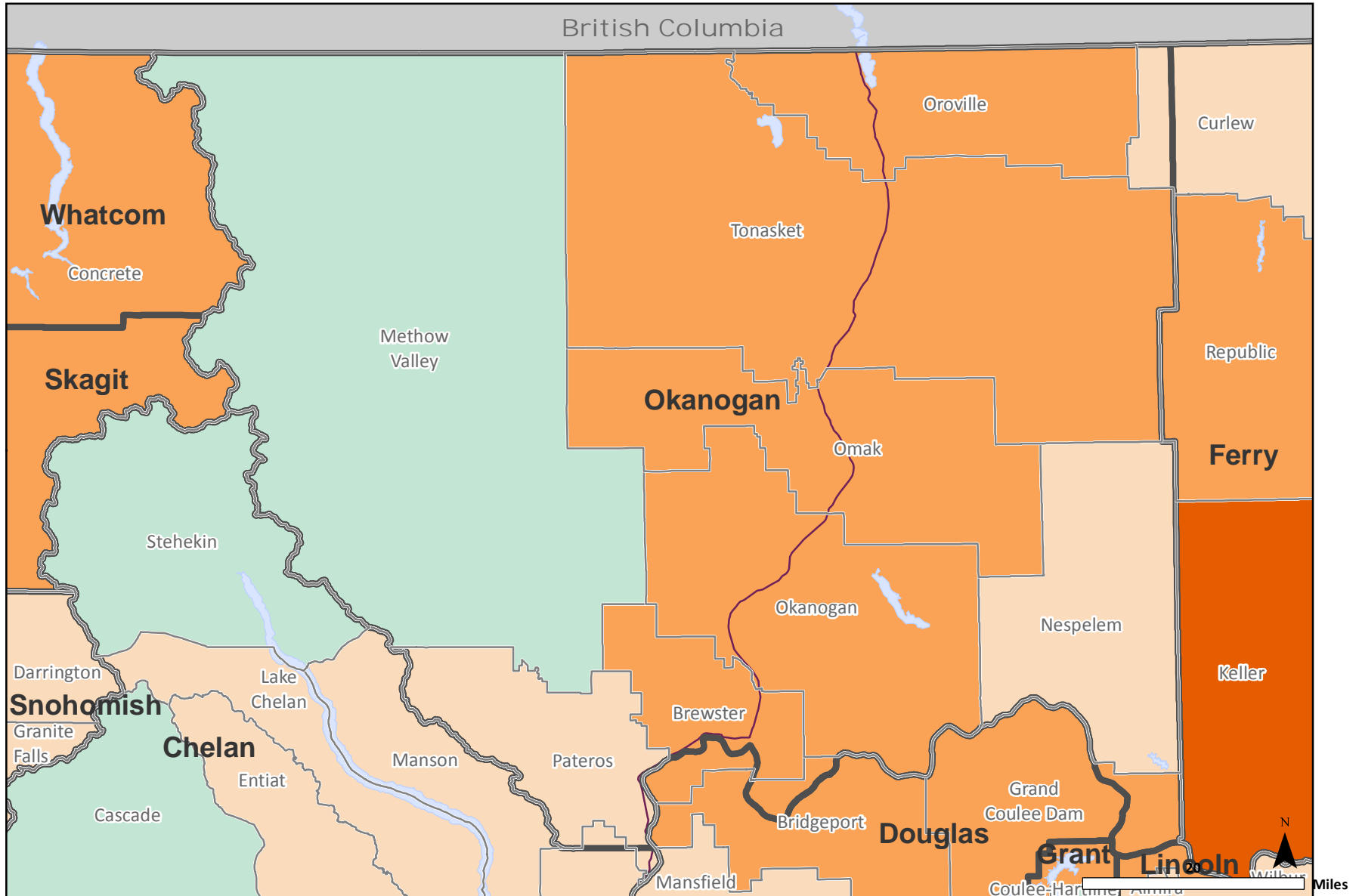


DATA NOTES: The yearly number of children (age birth-17) participating in Aid to Families (AFDC/TANF) programs in the fiscal year, per 1,000 children (age birth-17).

SOURCES: DSHS Research and Data Analysis, Automated Client Eligibility System and Warrant Roll.
Population Estimates: Washington State Department of Health

Food Stamp Recipients (All Ages)

by School District, Okanogan County, 2009



Rate compared to the State

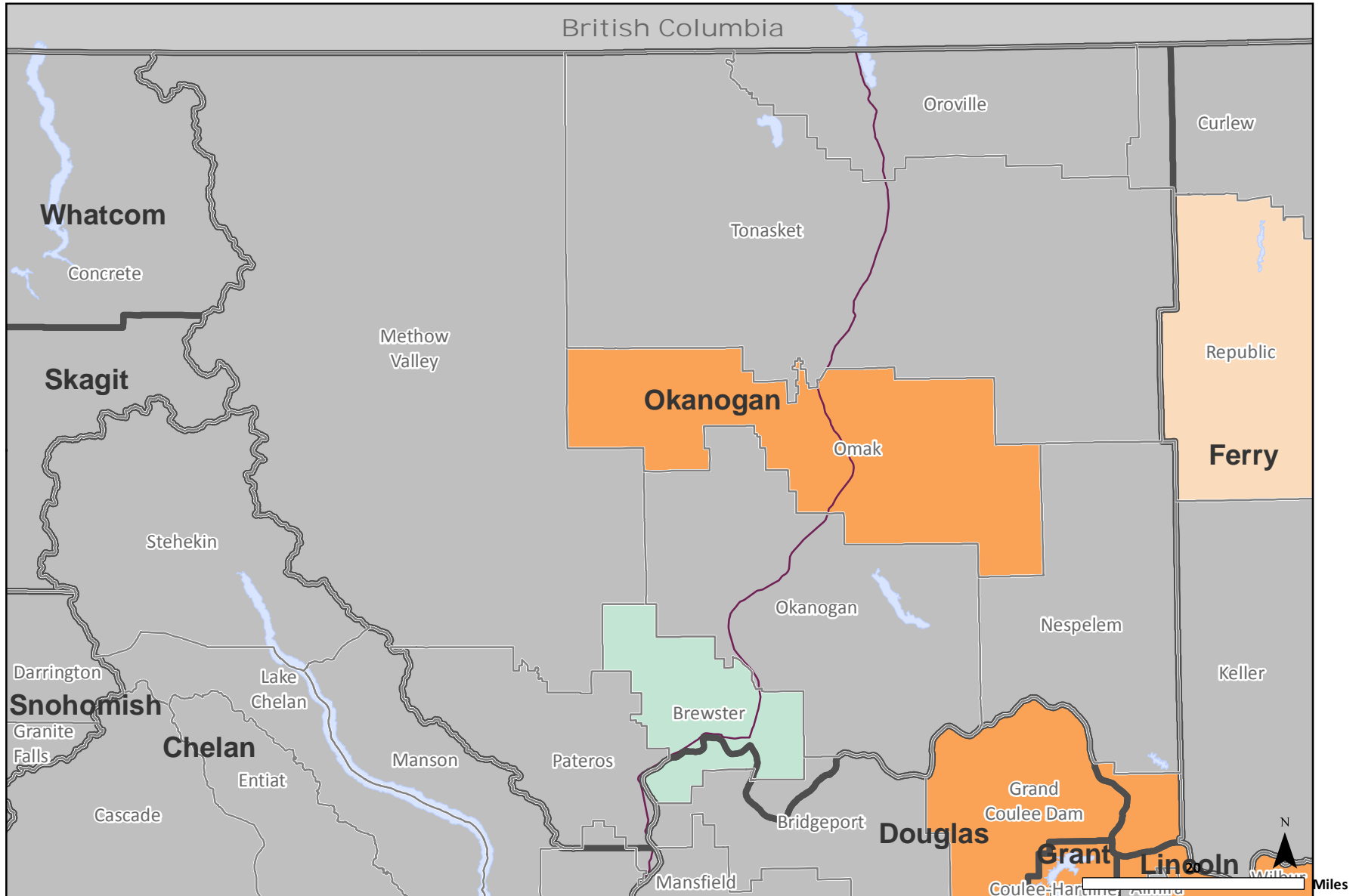
- VERY HIGH
- high
- average
- low or very low
- Counties
- Highways
- Water
- Not applicable

DATA NOTES: The number of persons (all ages) receiving food stamps in the fiscal year, per 1,000 persons (all ages).

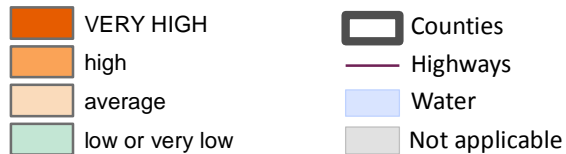
SOURCES: DSHS Research and Data Analysis, Automated Client Eligibility System and Warrant Roll. Population Estimates: Washington State Department of Health

Total Arrests (Age 10-17)

by School District, Okanogan County, 2009



Rate compared to the State

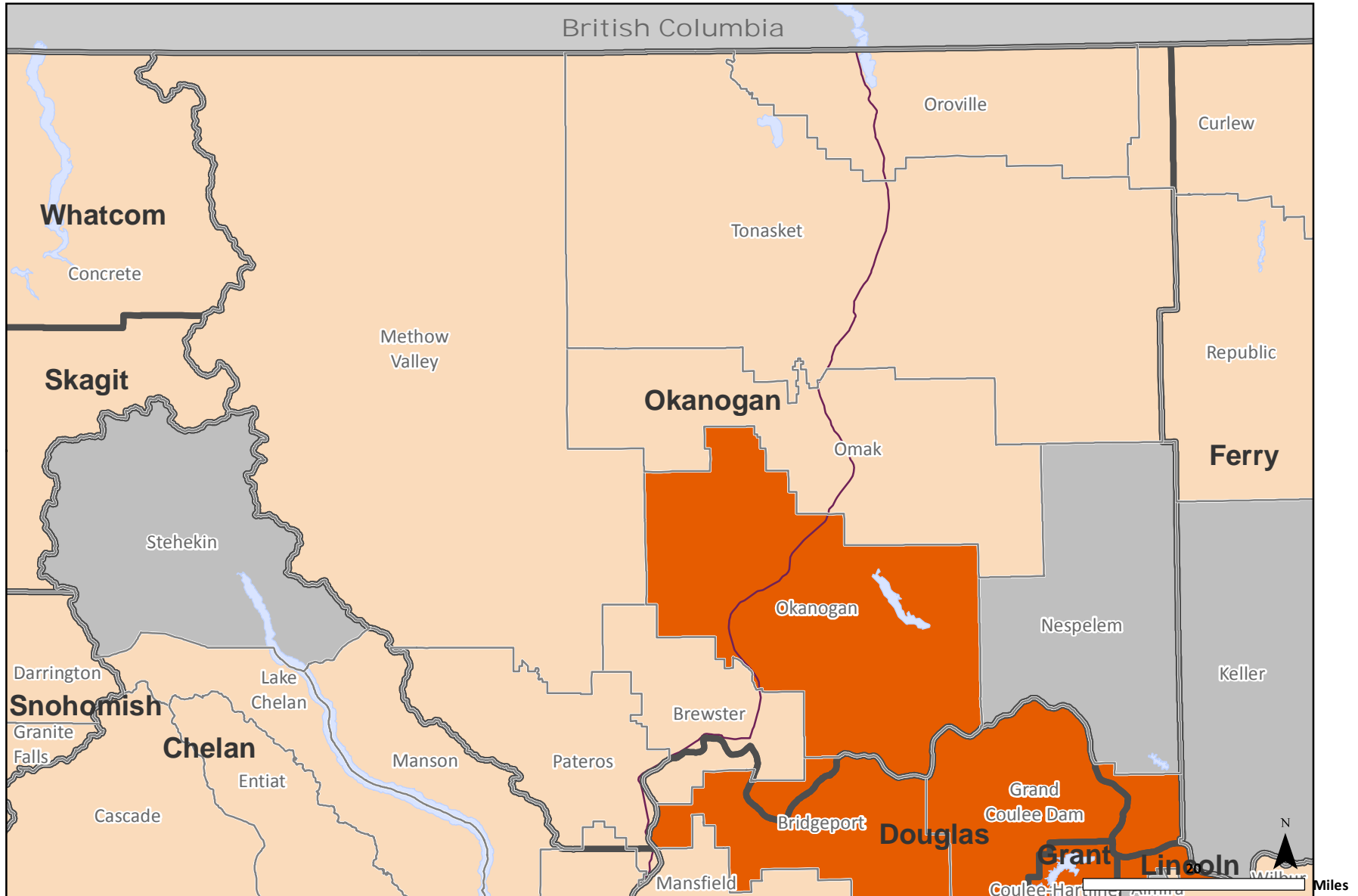


DATA NOTES: The number of arrests of adolescents (age 10-17) for any crime, per 1,000 adolescents (age 10-17).

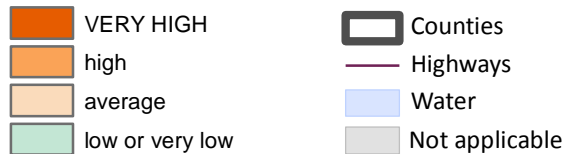
SOURCES: Washington Association of Sheriffs and Police Chiefs, Uniform Crime Report (UCR), Tables 40 and 50. Population Estimates: Washington State Department of Health

Students in Low Performing Schools, Grades 10-12

by School District, Okanogan County, 2009



Rate compared to the State

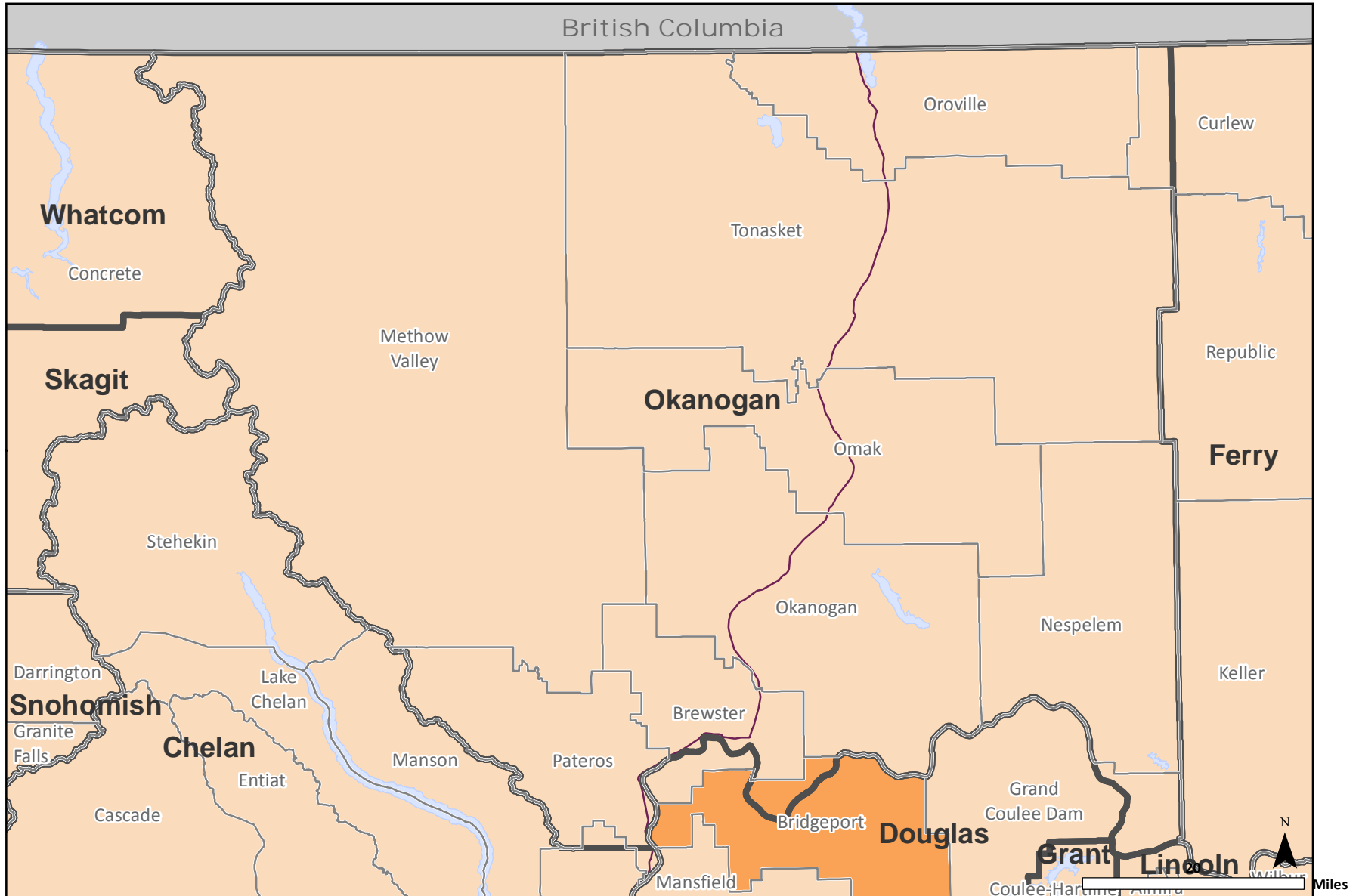


DATA NOTES: Students in grades 10-12 attending low performing schools as a percentage of all students enrolled in grades 10-12 in the district. "Low Performing Schools" include all Tier I and Tier II schools, and the bottom 5 percent of Tier III schools on the Washington state's School Improvement List (<http://www.k12.wa.us/Improvement/FederalGrants/SchoolImprovementListTierI-II-%20IIISchools.pdf>).

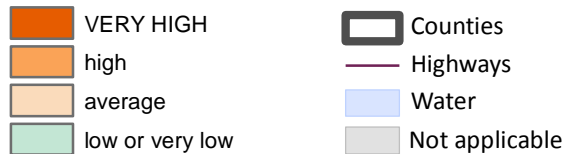
SOURCES: Washington State Office of Superintendent of Public Instruction.

Students in Low Performing Schools, Grades 1-6

by School District, Okanogan County, 2009



Rate compared to the State

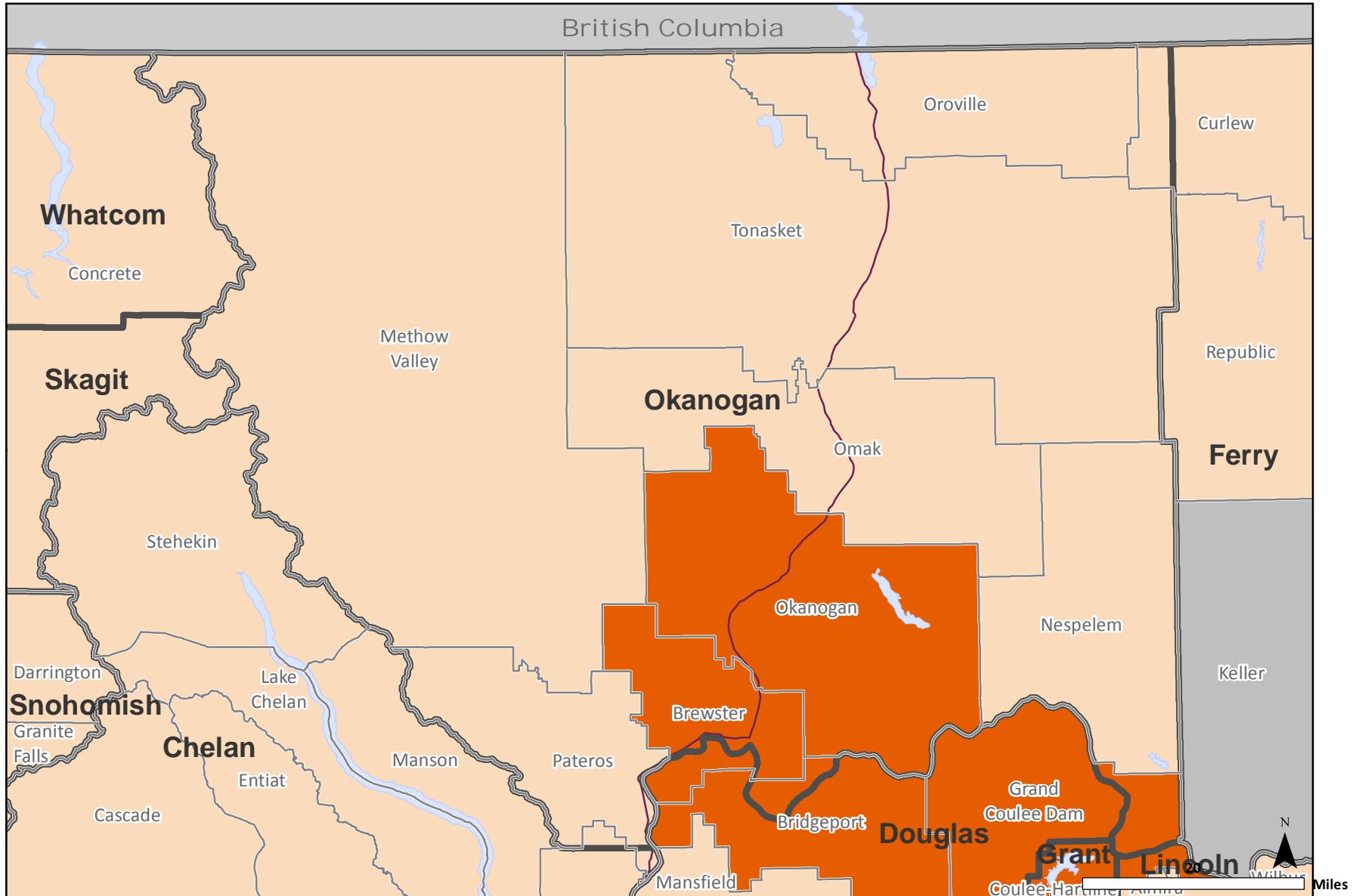


DATA NOTES: Students in grades 1-6 attending low performing schools as a percentage of all students enrolled in grades 1-6 in the district. "Low Performing Schools" include all Tier I and Tier II schools, and the bottom 5 percent of Tier III schools on the Washington state's School Improvement List (http://www.k12.wa.us/Improvement/FederalGrants/SchoolImprovementListTierI-II-%20III_Schools.pdf).

SOURCES: Washington State Office of Superintendent of Public Instruction.

Students in Low Performing Schools, Grades 7-9

by School District, Okanogan County, 2009



Rate compared to the State

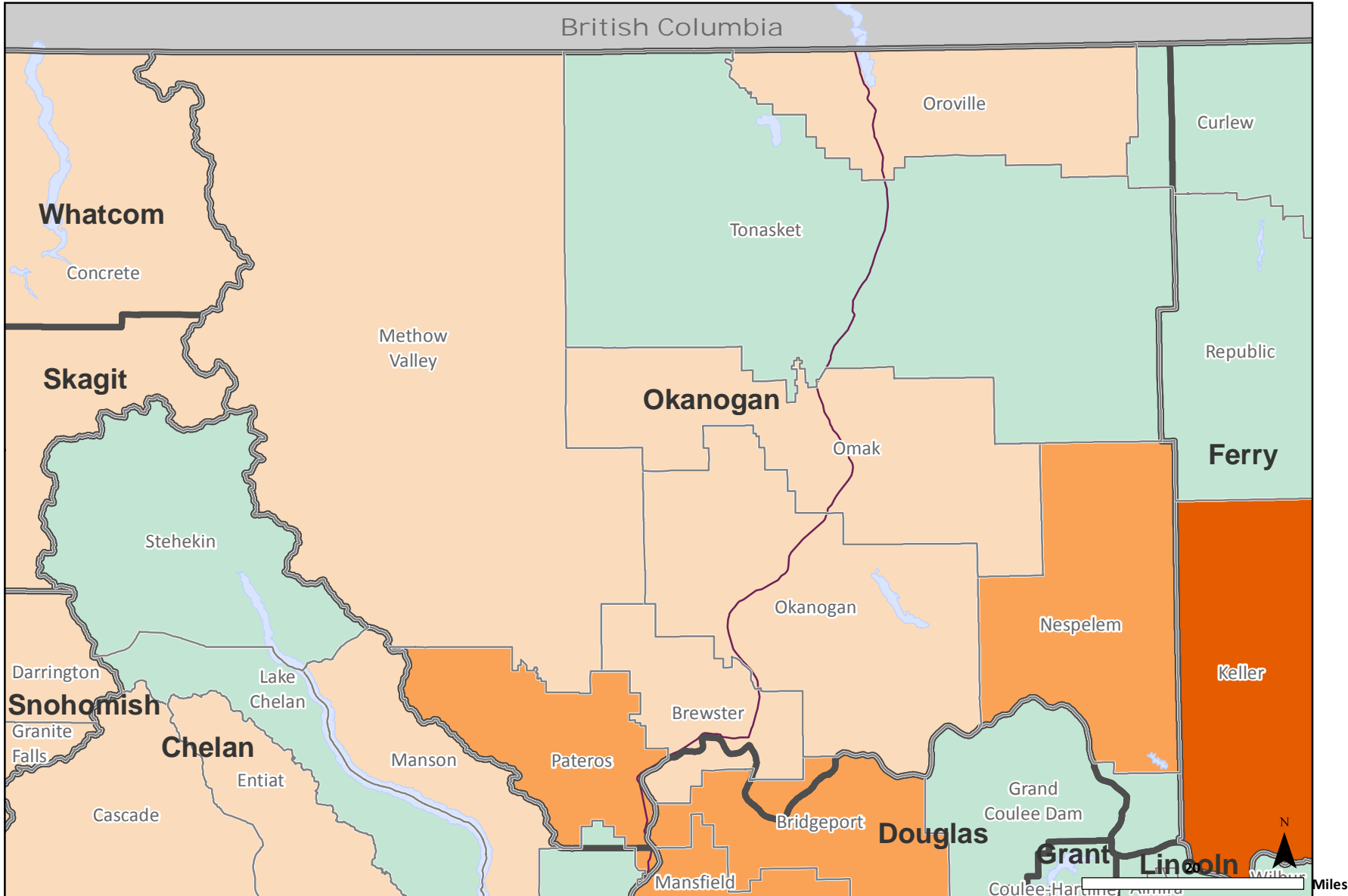
- VERY HIGH
- high
- average
- low or very low
- Counties
- Highways
- Water
- Not applicable

DATA NOTES: Students in grades 7-9 attending low performing schools as a percentage of all students enrolled in grades 7-9 in the district. "Low Performing Schools" include all Tier I and Tier II schools, and the bottom 5 percent of Tier III schools on the Washington state's School Improvement List (http://www.k12.wa.us/Improvement/FederalGrants/SchoolImprovementListTierI-II-%20III_Schools.pdf).

SOURCES: Washington State Office of Superintendent of Public Instruction.

Absenteeism, Grades 1-8

by School District, Okanogan County, 2009



Rate compared to the State

- VERY HIGH
- high
- average
- low or very low

Map Symbols:

- Counties
- Highways
- Water
- Not applicable

DATA NOTES: The number of students in grades 1-8 who have unexcused absences from school as a percentage of the total student days possible in the school year. School days are the number of days taught in the school multiplied by the number of students enrolled in grades 1-8.

SOURCES: Washington State Office of Superintendent of Public Instruction.

