

County Community Risk Profile: Lincoln County

Highest Risk Score		Risk Ranking		Risk Category Rank		Contextual Indicators	
District	Population: Age 0-17	Risk Percentile	Risk Indicator with Data	Consumption (Alcohol)	Consequence	Economic Deprivation	Troubled Family
Reardan-Edwall SD	1,060	95	24	Very High	High	Average	Average
Creston SD	130	75	26	Very High	Very Low	Low	Average
Wilbur SD	269	51	26	Average	Low	Low	Very Low

Other School Districts

District	Population: Age 0-17	Risk Percentile	Risk Indicator with Data	Consumption (Alcohol)	Consequence	Economic Deprivation	Troubled Family
Almira SD	112	36	16	Average	Low	Low	Average
Odessa SD	338	25	8	No Data	Average	Average	High
Davenport SD	843	21	26	Very Low	Average	Average	Average
Harrington SD	175	16	8	No Data	Low	Low	Average
Sprague SD	150	16	7	No Data	Low	Average	Very High

* The alcohol consumption risk score was calculated from prevalence and frequency of underage drinking. The consequence risk score is calculated from school performance, youth delinquency, and mental health indicators.

A Risk Category Rank of "Very High" indicates the referenced School District Risk Score was in the top 10% of School Districts in the risk Category.

A Risk Category Rank of "High" indicates the referenced School District Risk Score was in the top 25% of School Districts in the risk Category.

A Risk Category Rank of "Average" indicates the referenced School District Risk Score was between 25% and 75% of School Districts in the risk Category.

A Risk Category Rank of "Low" indicates the referenced School District Risk Score was in the bottom 25% of School Districts in the risk Category.

A Risk Category Rank of "Very Low" indicates the referenced School District Risk Score was in the bottom 10% of School Districts in the risk Category.

Review Considerations

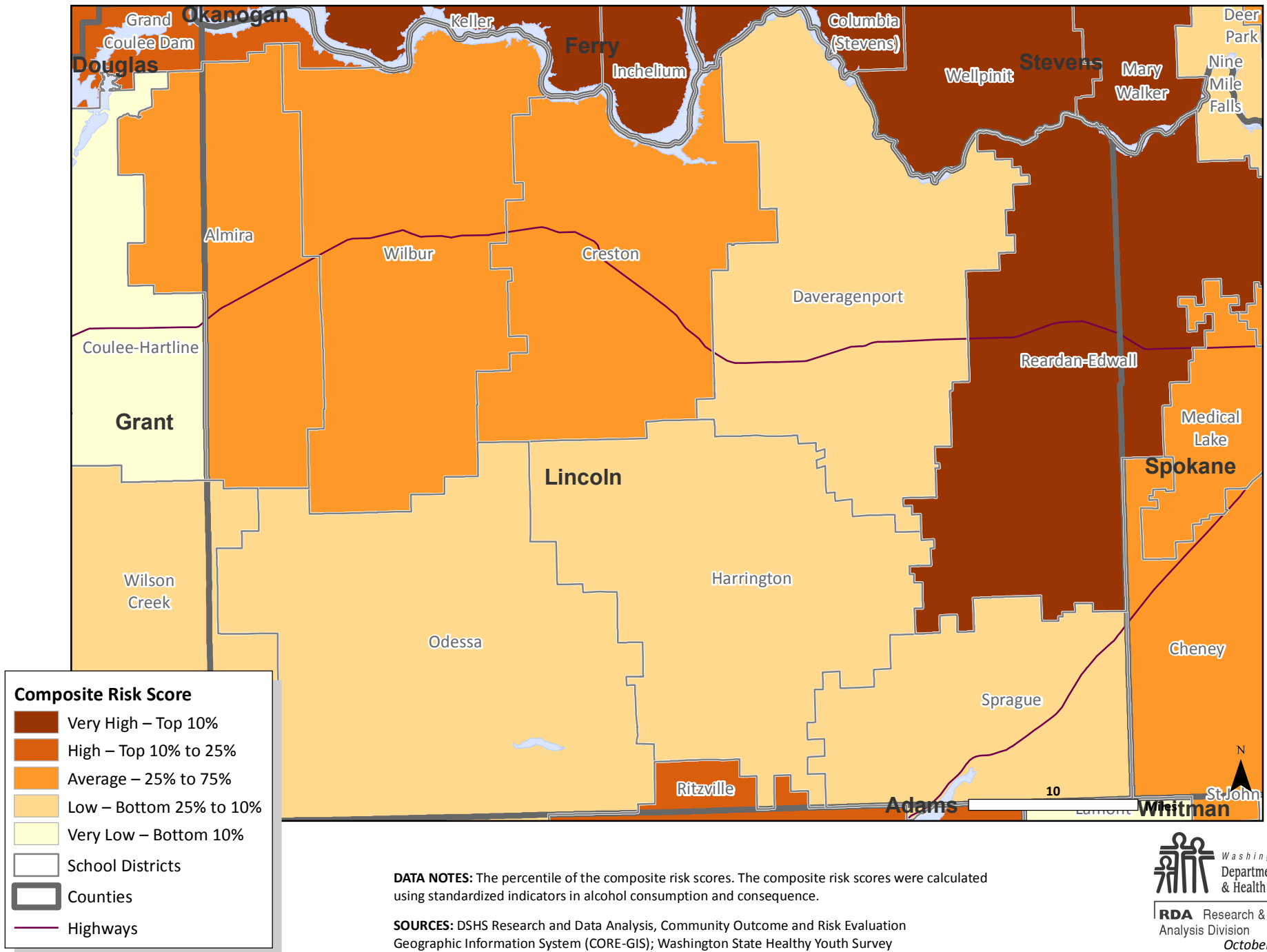
1) To get a overall sense of risk severity for both consumption and consequence, examine the 'Risk Percentile'. It reflects what % of School District had a Risk Score LOWER than the referenced School District.

2) To ensure that the risk score is meaningful, examine the 'Indicators with data' column. Risk scores based on few indicators should be interpreted with caution. In total, 26 indicators were used.

3) To consider other contextual information, examine the 'Population: Age 0-17', "economic deprivation" indicator, and the "troubled family" indicator. Note the "Population 0-17 year olds" value will be greater than district enrollment as it accounts for kids not in school as well as those in private schools.

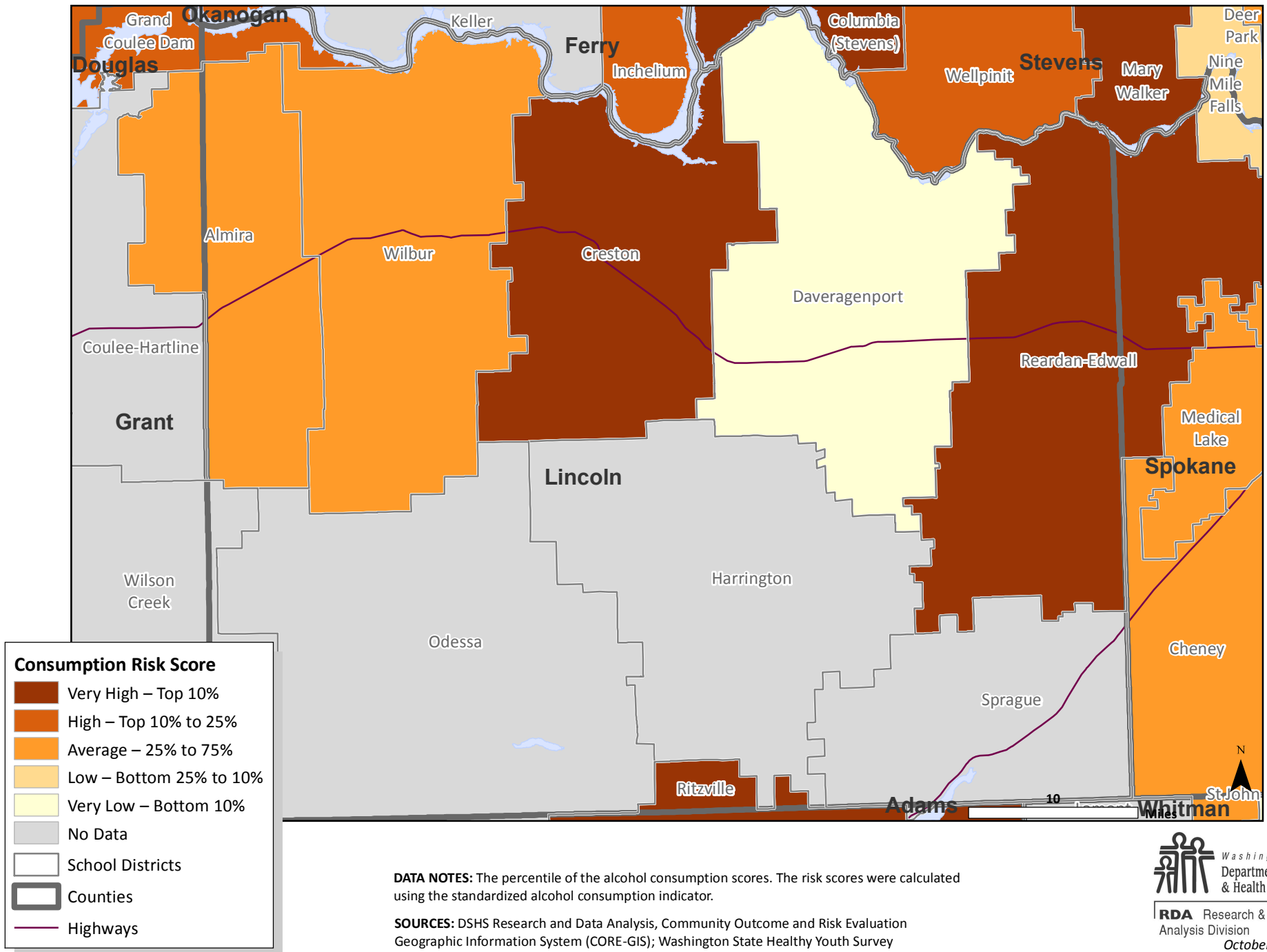
Composite Risk Score

by School District, Lincoln County, 2010



Consumption Risk Score

by School District, Lincoln County, 2010



Consequence Risk Score

by School District, Lincoln County, 2010

