

County Community Risk Profile: King County

Highest Risk Score		Risk Ranking		Risk Category Rank*		Contextual Indicators	
District	Population: Age 0-17	Risk Percentile	Risk Indicator with Data	Consumption (Alcohol)	Consequence	Economic Deprivation	Troubled Family
Highline SD	28,616	77	26	Average	High	High	Average
South Central-Tukwila	4,425	72	26	Average	High	Very High	Average
Federal Way SD	33,164	63	8	No Data	Average	Average	Average

Other School Districts

District	Population: Age 0-17	Risk Percentile	Risk Indicator with Data	Consumption (Alcohol)	Consequence	Economic Deprivation	Troubled Family
Renton SD	26,269	49	26	Average	Average	Average	Average
Kent SD	40,926	42	26	Average	Average	Average	Average
Auburn SD	21,865	40	26	Average	Average	Average	Average
Seattle SD	93,735	37	26	Average	Average	Average	Average
Skykomish SD	81	33	8	No Data	Average	Average	Very Low
Vashon Island SD	2,068	29	26	Average	Very Low	Very Low	Low
Enumclaw SD	5,909	27	26	Average	Low	Low	Average
Snoqualmie Valley SD	9,937	25	26	Low	Low	Very Low	Low
Tahoma SD	10,608	23	26	Low	Low	Very Low	Very Low
Lake Washington SD	41,490	19	26	Low	Low	Very Low	Very Low
Bellevue SD	26,551	13	26	Low	Low	Very Low	Low
Riverview SD	5,162	12	26	Very Low	Low	Very Low	Very Low
Northshore SD	29,579	10	26	Very Low	Low	Very Low	Low
Shoreline SD	12,750	9	26	Very Low	Low	Low	Average
Issaquah SD	26,928	6	26	Very Low	Very Low	Very Low	Very Low
Mercer Island SD	5,573	5	26	Low	Very Low	Very Low	Very Low

County Community Risk Profile: King County

* The alcohol consumption risk score was calculated from prevalence and frequency of underage drinking. The consequence risk score is calculated from school performance, youth delinquency, and mental health indicators.

A Risk Category Rank of "Very High" indicates the referenced School District Risk Score was in the top 10% of School Districts in the risk Category.

A Risk Category Rank of "High" indicates the referenced School District Risk Score was in the top 25% of School Districts in the risk Category.

A Risk Category Rank of "Average" indicates the referenced School District Risk Score was between 25% and 75% of School Districts in the risk Category.

A Risk Category Rank of "Low" indicates the referenced School District Risk Score was in the bottom 25% of School Districts in the risk Category.

A Risk Category Rank of "Very Low" indicates the referenced School District Risk Score was in the bottom 10% of School Districts in the risk Category.

Review Considerations

- 1) To get a overall sense of risk severity for both consumption and consequence, examine the 'Risk Percentile'. It reflects what % of School District had a Risk Score LOWER than the referenced School District.
- 2) To ensure that the risk score is meaningful, examine the 'Indicators with data' column. Risk scores based on few indicators should be interpreted with caution. In total, 26 indicators were used.
- 3) To consider other contextual information, examine the 'Population: Age 0-17', "economic deprivation" indicator, and the "troubled family" indicator. Note the "Population 0-17 year olds" value will be greater than district enrollment as it accounts for kids not in school as well as those in private schools.

Community Risk Profile: Seattle

Health Planning Area	Population: Age 0-17	Risk Ranking		Risk Category Rank		Contextual Indicators	
		Risk Percentile	Risk Indicator with Data	Consumption (Alcohol)	Consequence	Economic Deprivation	Troubled Family
Capitol Hill Eastlake	4634	78	16	Average	High	Very Low	Very Low
Beacon SE Seattle	14972	58	24	Average	High	High	Average
N Seattle Shoreline	24380	55	24	Average	Average	Average	Average
W Seattle Delridge	15669	48	24	Average	Average	Average	Average
Ballard Fremont Greenlake	14524	36	24	Average	Low	Very Low	Low
Downtown Central	10011	32	24	Average	Low	High	Average
Queen Anne Magnolia	7585	15	24	Low	Very Low	Very Low	Very Low
NE Seattle	13162	11	24	Very Low	Low	Very Low	Very Low

* The alcohol consumption risk score was calculated from prevalence and frequency of underage drinking. The consequence risk score is calculated from school performance, youth delinquency, and mental health indicators.

A Risk Category Rank of "Very High" indicates the referenced School District Risk Score was in the top 10% of School Districts in the risk Category.

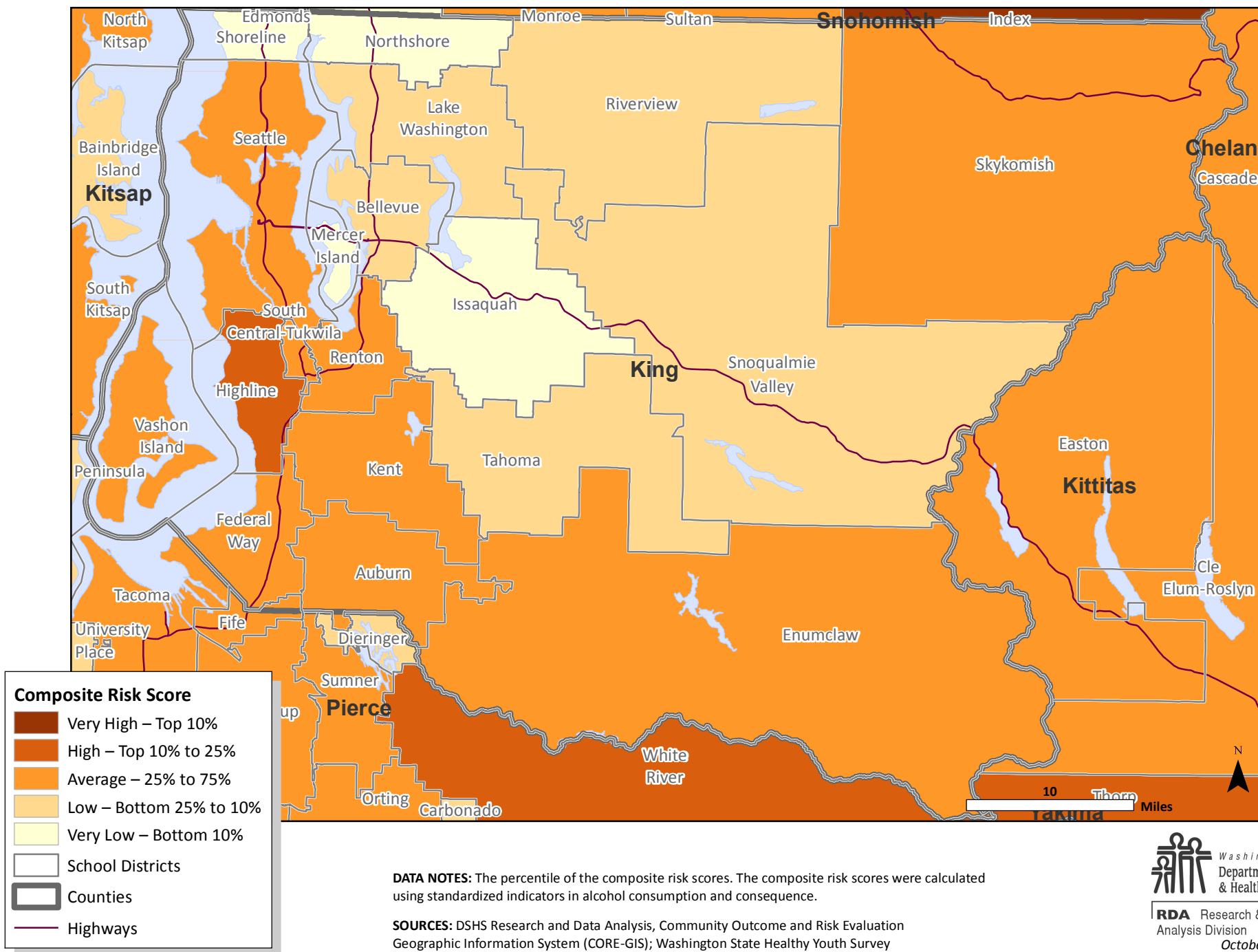
A Risk Category Rank of "High" indicates the referenced School District Risk Score was in the top 25% of School Districts in the risk Category.

A Risk Category Rank of "Average" indicates the referenced School District Risk Score was between 25% and 75% of School Districts in the risk Category.

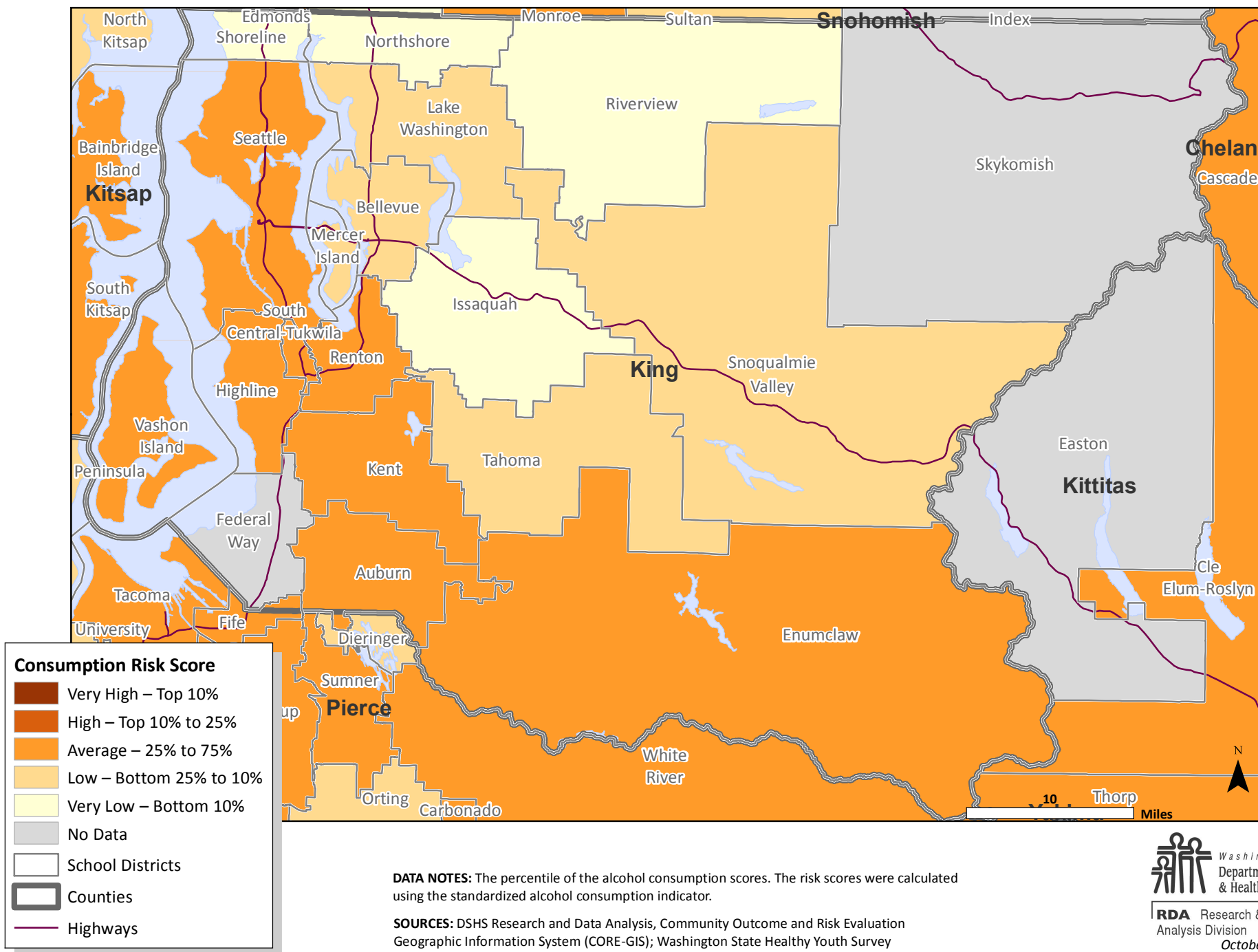
A Risk Category Rank of "Low" indicates the referenced School District Risk Score was in the bottom 25% of School Districts in the risk Category.

A Risk Category Rank of "Very Low" indicates the referenced School District Risk Score was in the bottom 10% of School Districts in the risk Category.

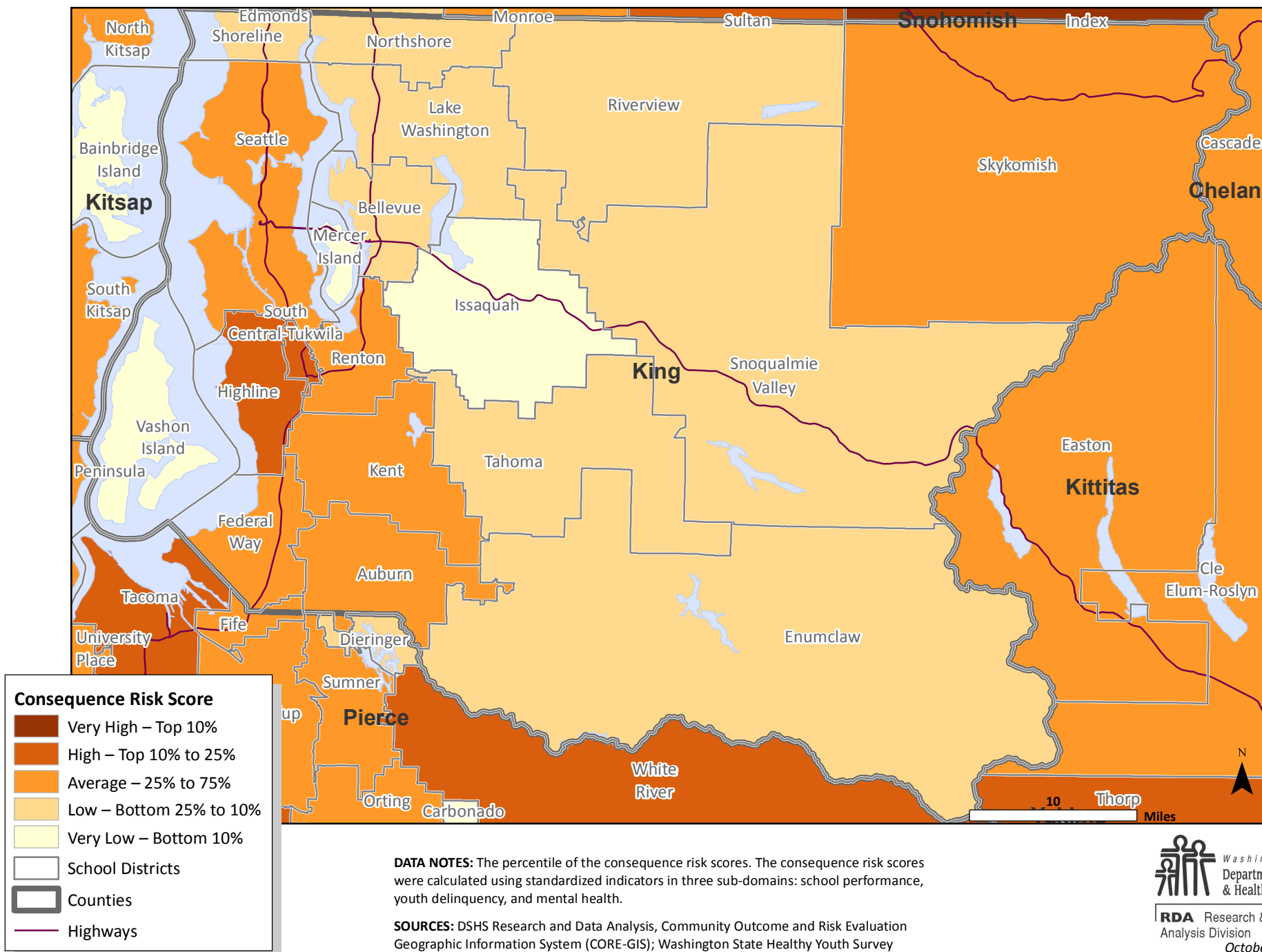
Composite Risk Score by School District, King County, 2010



Consumption Risk Score by School District, King County, 2010

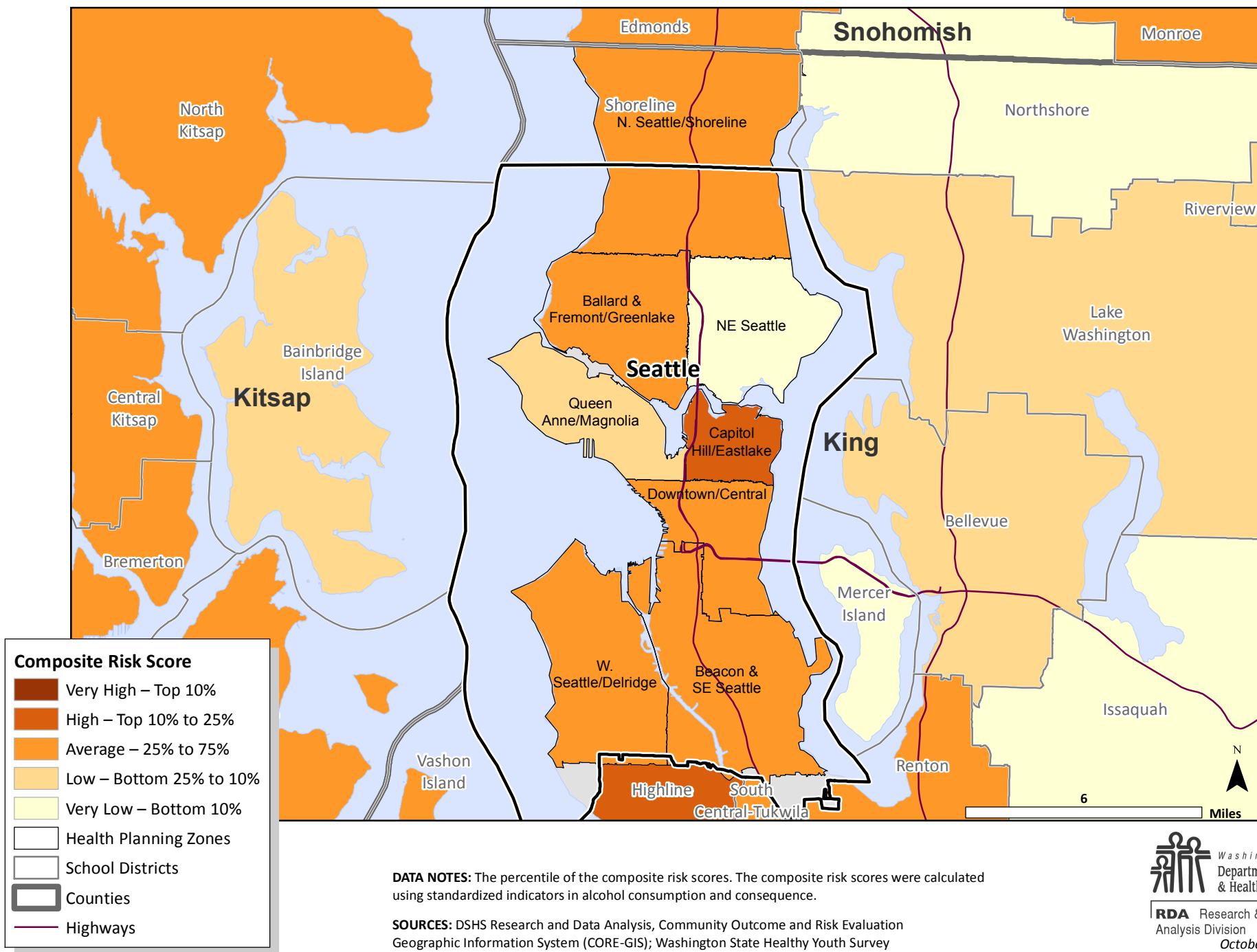


Consequence Risk Score by School District, King County, 2010



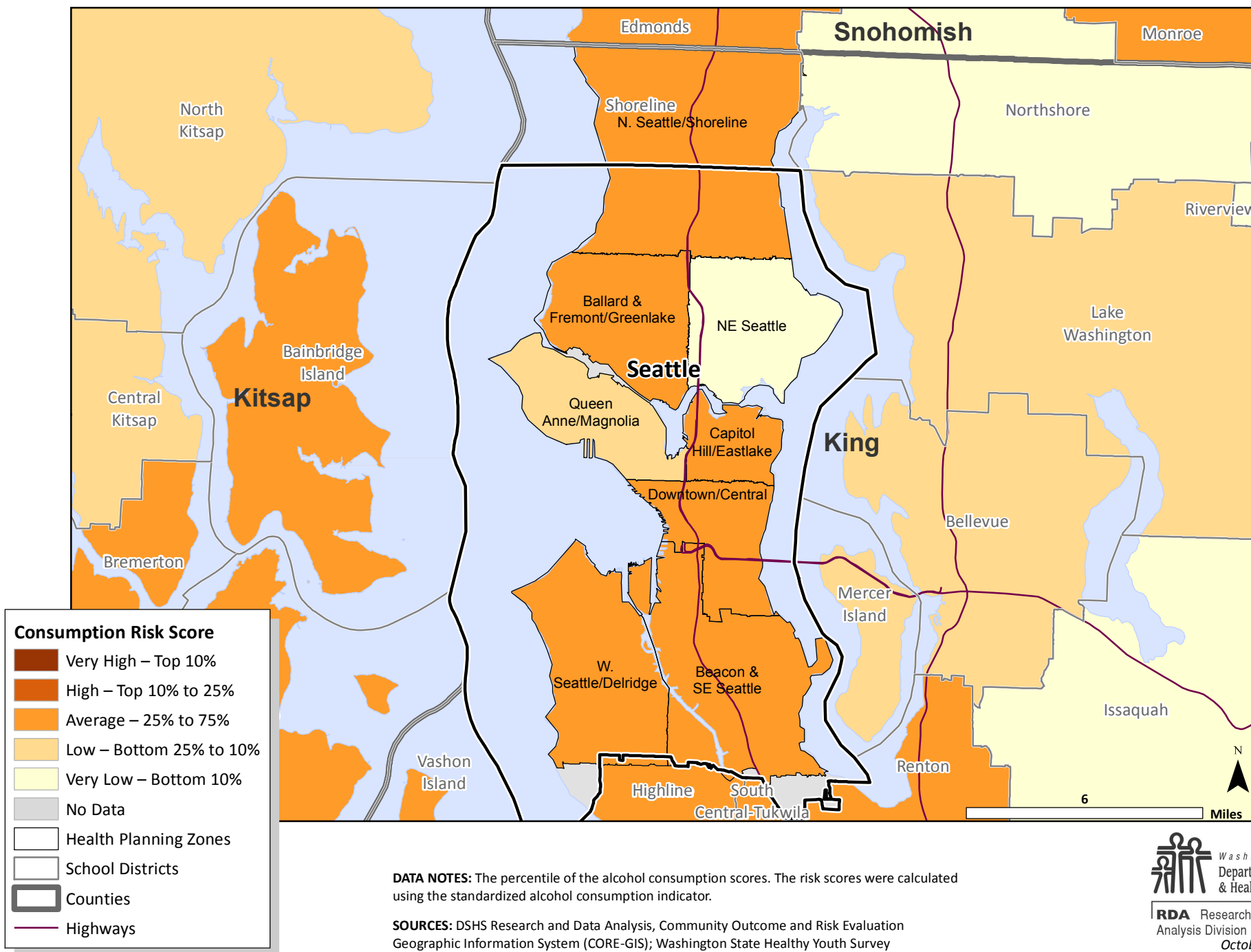
Composite Risk Score

by Health Planning Zone, Seattle School District, 2010



Consumption Risk Score

by Health Planning Zone, Seattle School District, 2010



DATA NOTES: The percentile of the alcohol consumption scores. The risk scores were calculated using the standardized alcohol consumption indicator.

SOURCES: DSHS Research and Data Analysis, Community Outcome and Risk Evaluation Geographic Information System (CORE-GIS); Washington State Healthy Youth Survey

Consequence Risk Score

by Health Planning Zone, Seattle School District, 2010

