

Faith Based Sector: Lessons Learned

March 7, 2013
White Swan, Washington



One

Department

Vision

Mission

Core set of Values

Presented by:

**Nancy Fiander, WS Arts & Community
Coalition Coordinator**

- **Pastor Jerral Campfield, Harrah Assembly of God Church**
- **Pastor Derel Olsen, Wilbur United Methodist Church**
- **Pastor Peter Touhey, Grace Brethren Church**
- **Father Bill Shaw, St. Mary's Catholic Church**



One

Department

Vision

Mission

Core set of Values

Catchment Area : Mt. Adams School District



Harrah
Brownstown
White Swan

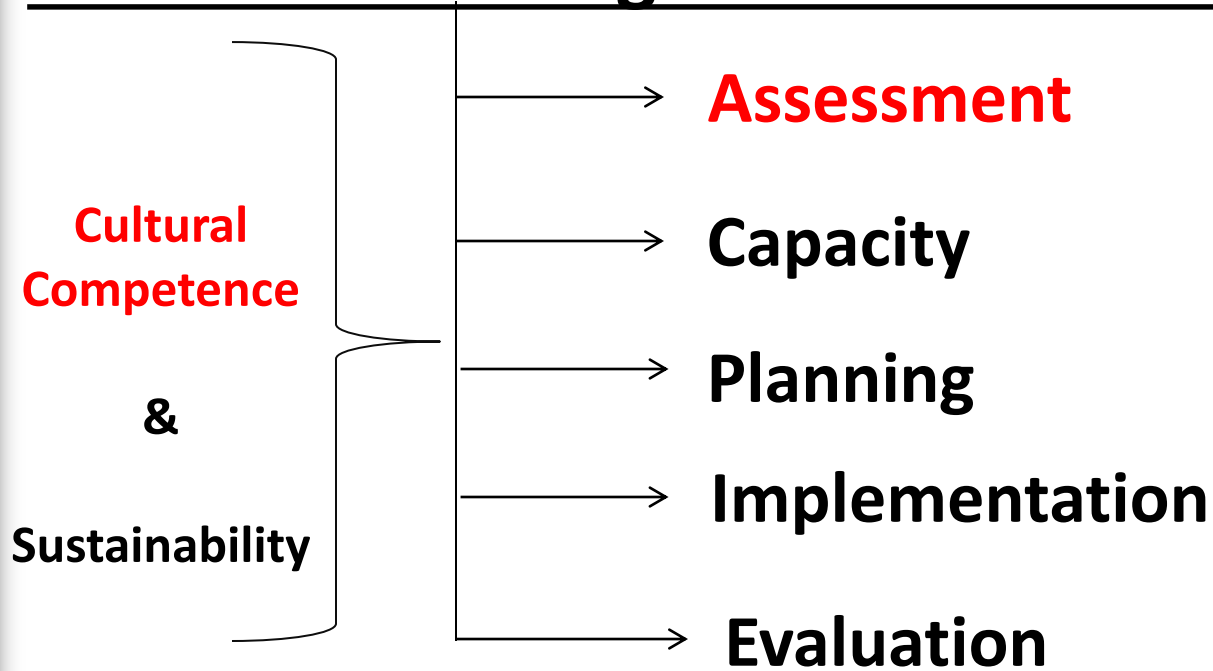


One

Department
Vision
Mission
Core set of Values



SAMHSA's Strategic Prevention Framework



One

Department
Vision
Mission
Core set of Values



White Swan Independent Shaker Church 1953



Toppenish Creek Long House



Four Square Church

Faith-based Community Assessment

White Swan



Indian Shaker Church 1920



Log Church



St. Mary's Catholic Church



Wilbur United Methodist Church



One

Department
Vision
Mission
Core set of Values



Faith-based Community Assessment

Harrah



One

Department
Vision
Mission
Core set of Values

Recruiting Faith-based Members

After you have finished your assessment you will know:

- **Who makes up the faith sectors in your community**
- **What you can do for each other**
- **Where the faith community fits in with your coalition & workgroups**



One

Department

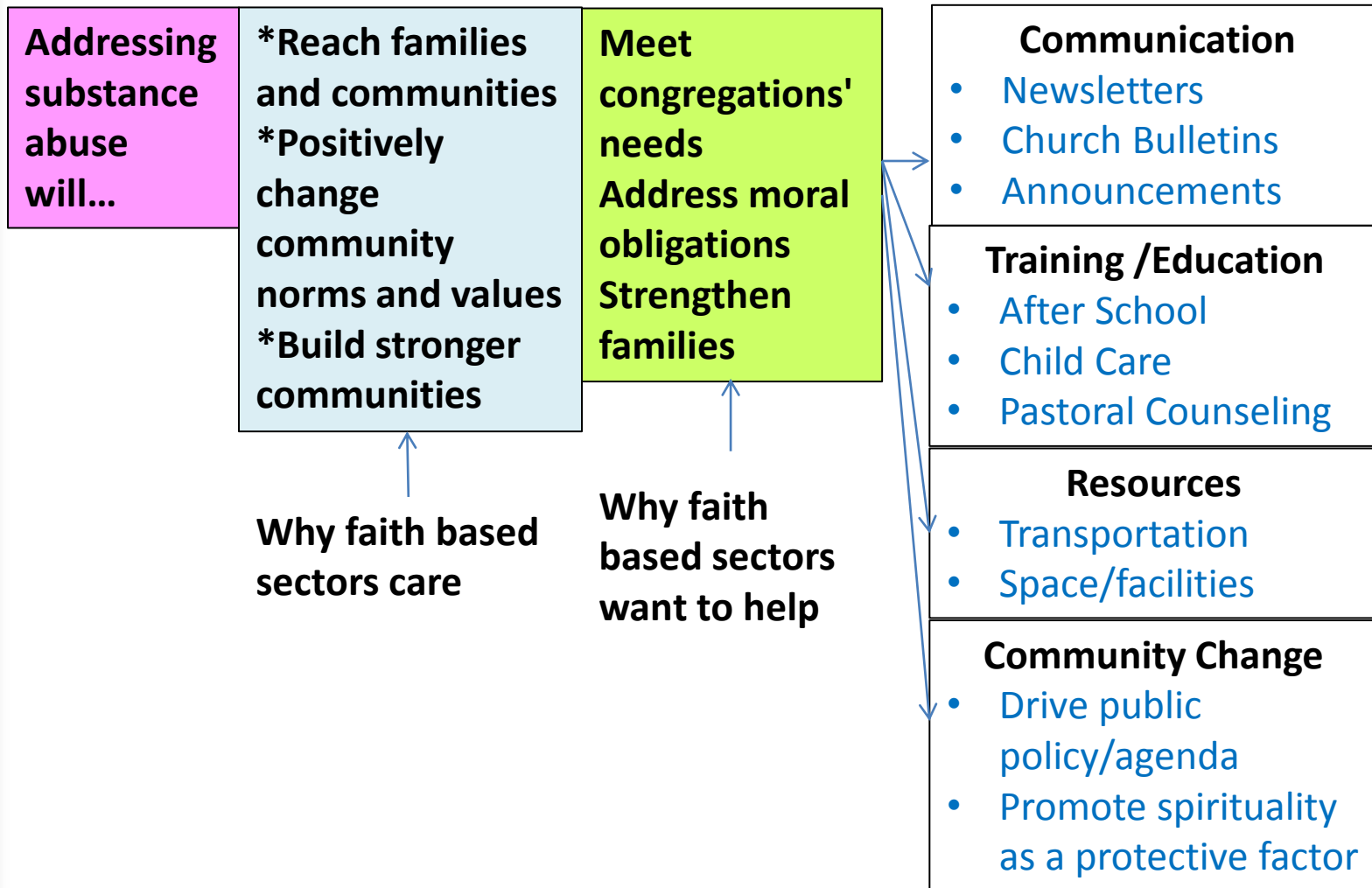
Vision

Mission

Core set of Values

CADCA Planning Worksheet: Faith Based Sector

Opportunities for Collaboration



One

Department
 Vision
 Mission
 Core set of Values

Elevator speech for coalitions to invite the faith based community:

- Strengthens families
- Develops resiliency in youth to resist substance abuse and other high risk behaviors
- Builds communities
- Garneres additional resources to serve congregation and the community at large



One

Department

Vision

Mission

Core set of Values

Recruiting Faith-based Members

What qualities should you look for in recruiting faith based representation on the coalition?

- **Compassion**
- **Willingness to collaborate**
- **Sustainability (commitment)**



One

Department

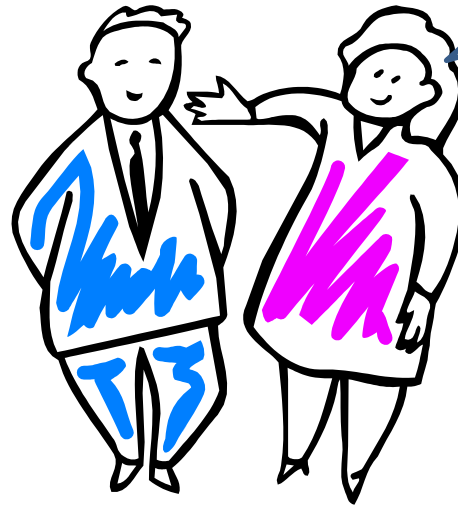
Vision

Mission

Core set of Values

Pastor Jerral Campfield
Pastor Derel Olson
Pastor Peter Touhey
Father William Shaw

I would like to
introduce you to the
members of our faith
based sectors



One

Department

Vision

Mission

Core set of Values

Pastor Jerral Campfield



One

Department

Vision

Mission

Core set of Values

Pastor Derel Olson



One

Department

Vision

Mission

Core set of Values

Pastor Peter Touhey



One

Department

Vision

Mission

Core set of Values

Father William Shaw



One

Department

Vision

Mission

Core set of Values

As members of the faith based community, what experiences have you had as part of the coalition that you would like to share with others?



One

Department

Vision

Mission

Core set of Values

**Please describe how you feel
you are effective in engaging
other faiths in the coalition's
work of addressing underage
drinking?**



One

Department

Vision

Mission

Core set of Values

Why faith-based sectors want to work with coalitions

- Coalitions can provide useful training
- Information sharing – lots going on in our community and state
- Validation and acknowledgement: we all want the same thing – safe and healthy families
- Partnerships lead to a safer community



One

Department

Vision

Mission

Core set of Values

Coalition and Faith-based Collaborations: What is the Mutual Value?

In our coalition we approach faith based sectors the same way we do other potential sector members.....as a collaborative partnership.

- How does your participation on the White Swan Arts & Recreation Community Coalition fit with your position as a faith based leader?



One

Department

Vision

Mission

Core set of Values

Food for Thought

Chronic substance use can decay a person, a family and a community from the inside out. Faith based involvement is crucial in conquering this importance societal epidemic.



One

Department

Vision

Mission

Core set of Values



One

Department

Vision

Mission

Core set of Values

Presenter Contact Information

- Pastor Jerral Campfield
jvc4him@msn.com (509) 848-2600
- Nancy Fiander, White Swan Arts and Recreation Coalition Coordinator
nfiander@masd209.org 509-945-5097
- Pastor Peter Touhey
petertouhey@gmail.com (509) 848-2609
- Pastor Daryl Olsen
derel.olsen@gmail.com (509) 930-5155
- Father William Shaw (509) 874-2436



One

Department

Vision

Mission

Core set of Values