

# County Community Risk Profile (2018): Spokane

		Risk Ranking		Risk Category Rank		Contextual Indicators	
School District	Population: 10-17	ATOD Risk Percentile	Indicators with Data	Consumption (ATOD)	Consequence	Economic Deprivation	Troubled Family
Deer Park	1,376	86	21	Very High	Average	Average	Average
East Valley (Spokane)	2,939	77	21	Average	High	Average	Average
Riverside	1,385	66	13	Average	High	Average	Average
Medical Lake	1,241	64	21	High	Low	Low	Average
Cheney	2,932	48	21	Average	Average	Average	Average
West Valley (Spokane)	1,956	36	21	Average	Average	Average	No Data
Central Valley	9,492	17	21	Low	Average	Average	Average
Mead	6,959	16	13	Low	Low	Low	Average
Freeman	600	10	21	Very Low	Average	Very Low	Low
Nine Mile Falls	1,082	.	4	No Data	No Data	Low	Low
Liberty	476	.	4	No Data	No Data	Low	Average

## NOTES:

**This risk profile reflects the risk levels of this county as of February 2018. School districts with no high schools are not included in this summary. Please note risk levels and risk rankings may change over time.**

The ATOD consumption risk score is calculated from prevalence of alcohol, tobacco, and other drug use. The consequence risk score is calculated from school performance, youth delinquency, and mental health indicators. The overall risk ranking is not computed if either consumption or consequence score is missing.

A Risk Category Rank of "Very High" indicates the referenced School District Risk Score was in the top 10% of School Districts in the risk Category.

A Risk Category Rank of "High" indicates the referenced School District Risk Score was in the top 25% of School Districts in the risk Category.

A Risk Category Rank of "Average" indicates the referenced School District Risk Score was between 25% and 75% of School Districts in the risk Category.

A Risk Category Rank of "Low" indicates the referenced School District Risk Score was in the bottom 25% of School Districts in the risk Category.

A Risk Category Rank of "Very Low" indicates the referenced School District Risk Score was in the bottom 10% of School Districts in the risk Category.

## Review Considerations

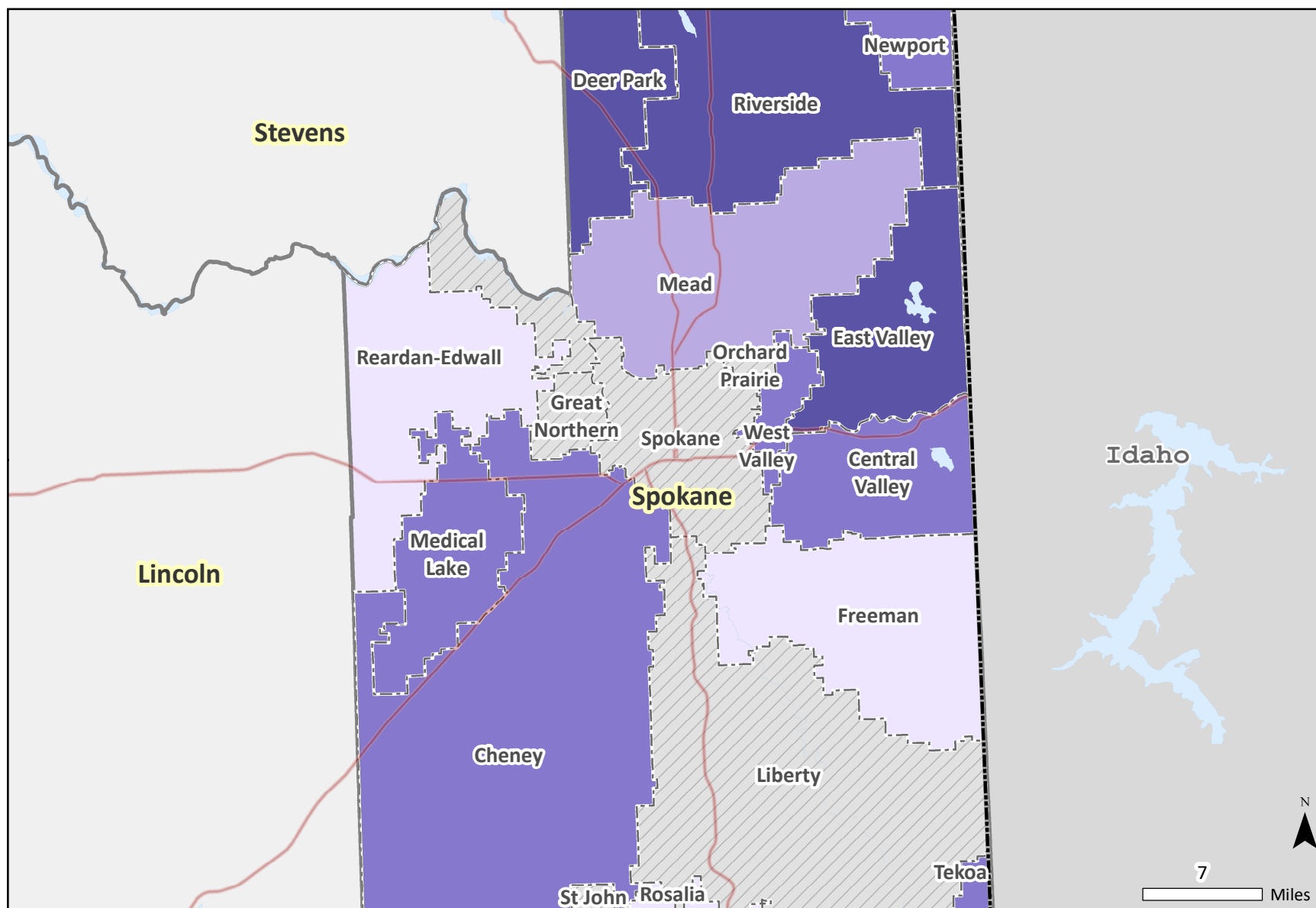
1) To get an overall sense of risk severity for both consumption and consequence, examine the "Risk Percentile". It reflects what % of School District had a Risk Score LOWER than the referenced School District.

2) To ensure that the risk score is meaningful, examine the "Indicators with data" column. Risk scores based on few indicators should be interpreted with caution. In total, 26 indicators were used.

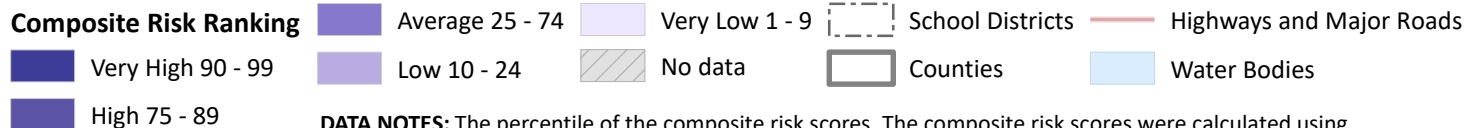
3) To consider other contextual information, examine the "Population: Age 0-17", "economic deprivation" indicator, and the "troubled family" indicator. Note the "Population 0-17 year olds" value will be greater than district enrollment as it accounts for kids not in school as well as those in private schools.

# Marijuana Composite Ranking

by School District, Spokane County, 2018



## Composite Risk Ranking

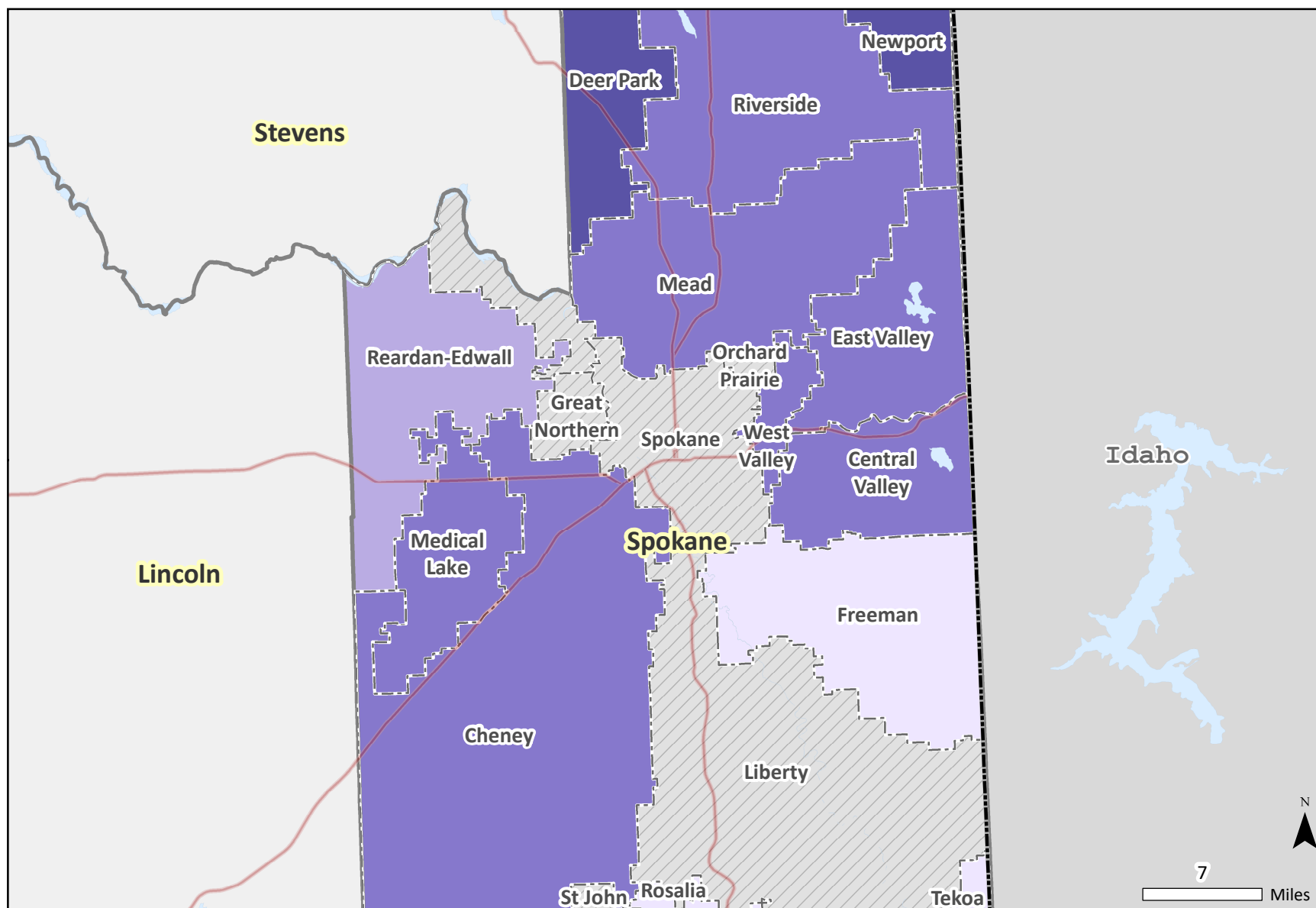


**DATA NOTES:** The percentile of the composite risk scores. The composite risk scores were calculated using standardized indicators in marijuana consumption and consequence. Cartography: Irina Sharkova.

**SOURCE:** DSHS Research and Data Analysis, Community Outcome and Risk Evaluation Information System (CORE).

# Marijuana Consumption Ranking

by School District, Spokane County, 2018



**Consumption Risk Ranking**

Very High 90 - 99	Average 25 - 74	Very Low 1 - 9	School Districts	Highways and Major Roads
High 75 - 89	Low 10 - 24	No data	Counties	Water Bodies

**DATA NOTES:** The percentile of the consumption risk scores. The consumption risk scores were calculated using standardized indicators in marijuana consumption. Cartography: Irina Sharkova.

**SOURCE:** DSHS Research and Data Analysis, Community Outcome and Risk Evaluation Information System (CORE).

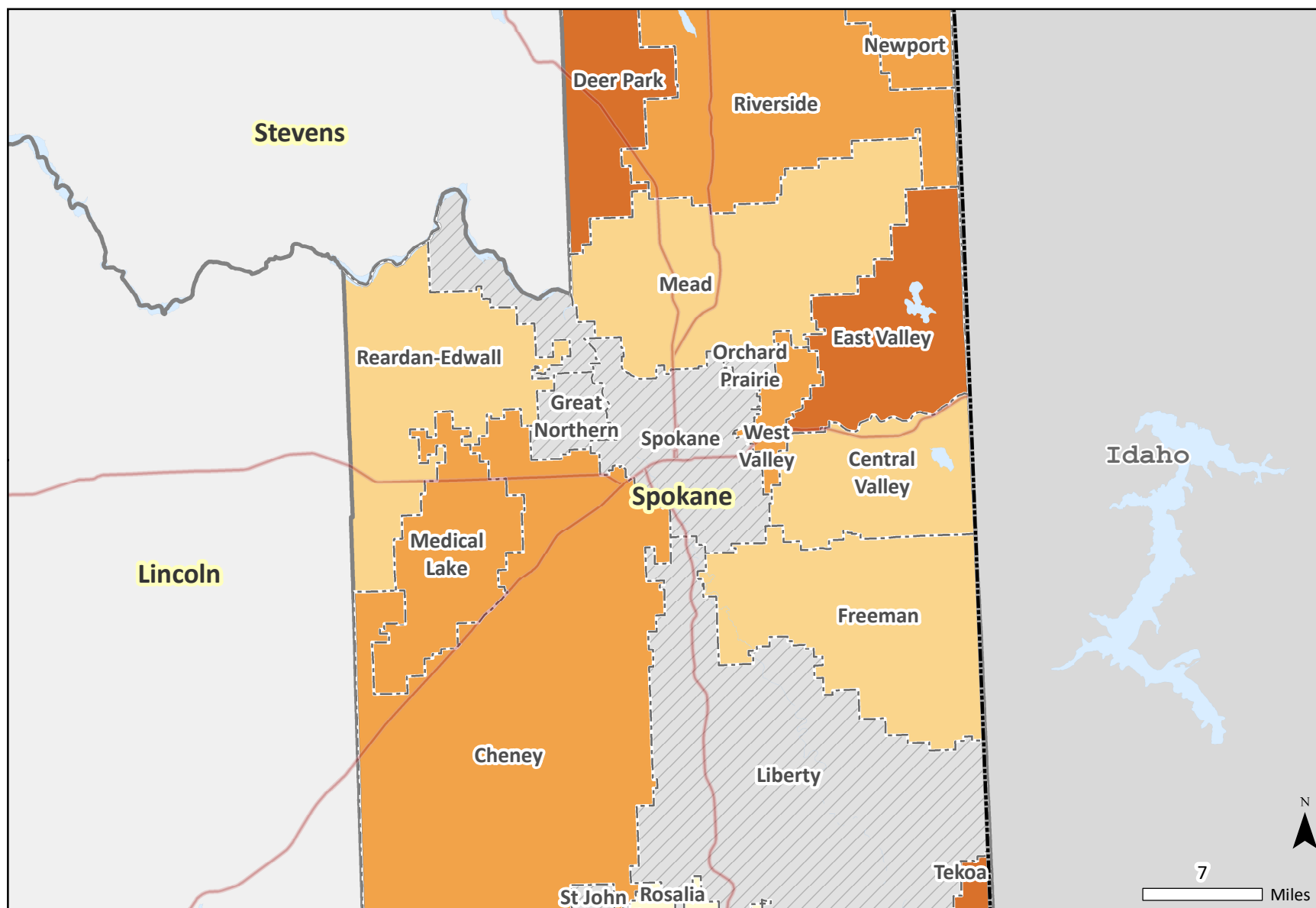


Transforming lives

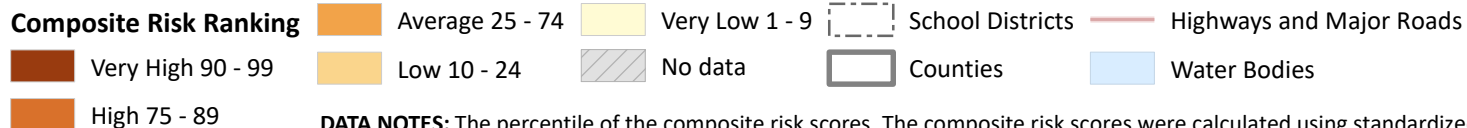
March 20, 2018

# Alcohol, Tobacco and Other Drugs Composite Ranking

by School District, Spokane County, 2018



## Composite Risk Ranking

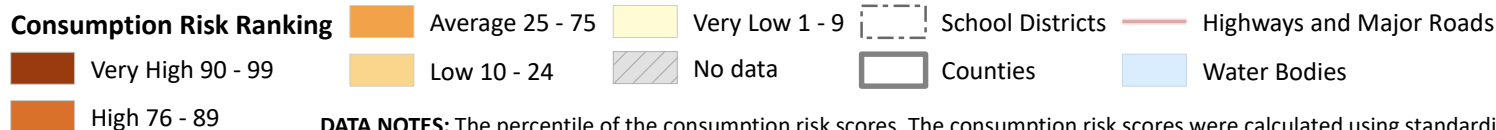
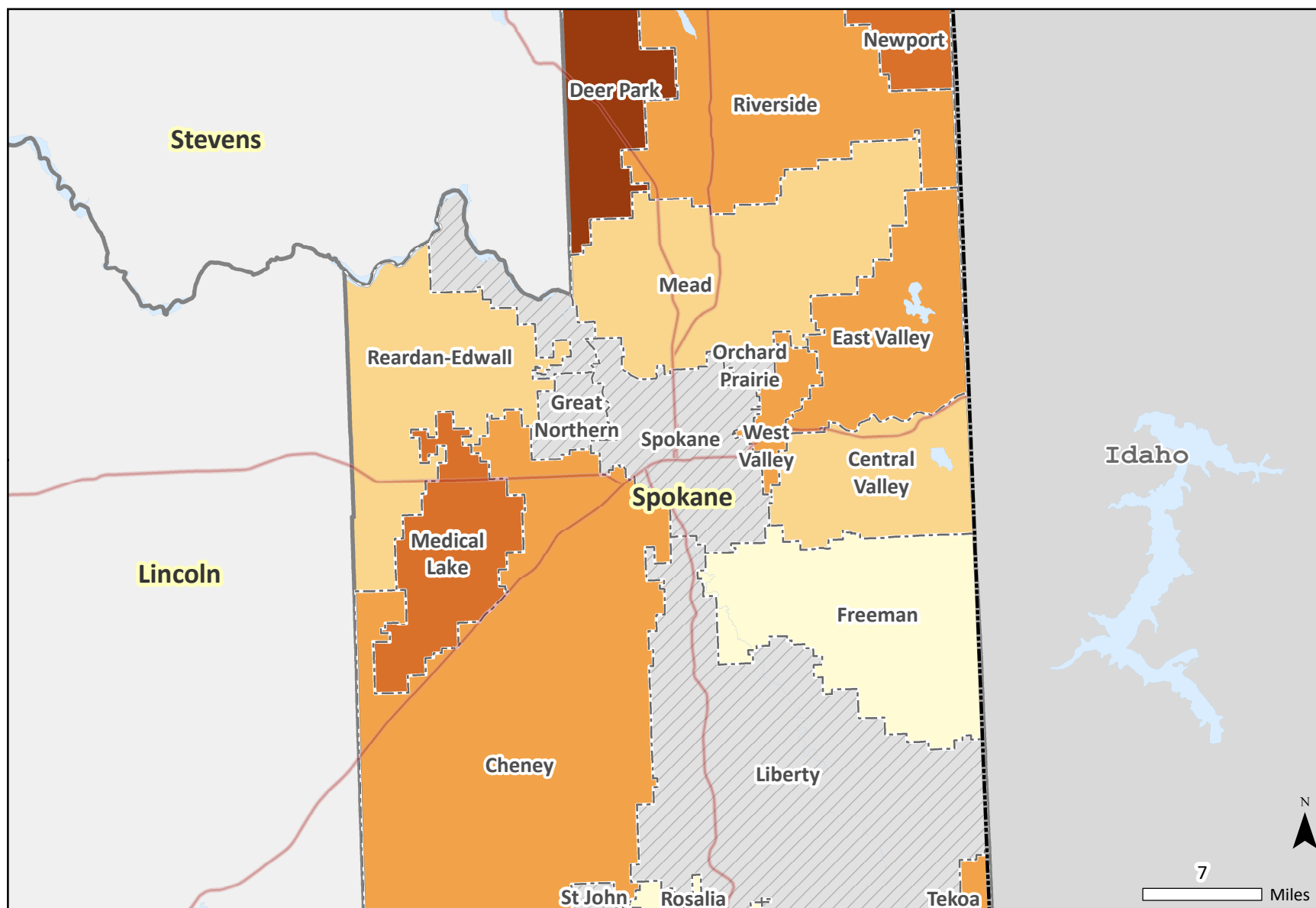


**DATA NOTES:** The percentile of the composite risk scores. The composite risk scores were calculated using standardized indicators in the alcohol, tobacco and other drugs (ATOD) consumption and consequence. Cartography: Irina Sharkova.

**SOURCE:** DSHS Research and Data Analysis, Community Outcome and Risk Evaluation Information System (CORE).

# Alcohol, Tobacco and Other Drugs Consumption Ranking

by School District, Spokane County, 2018

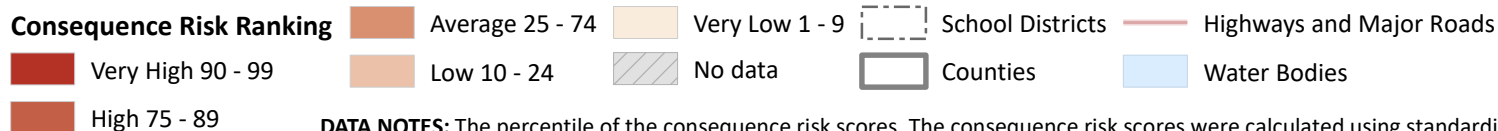
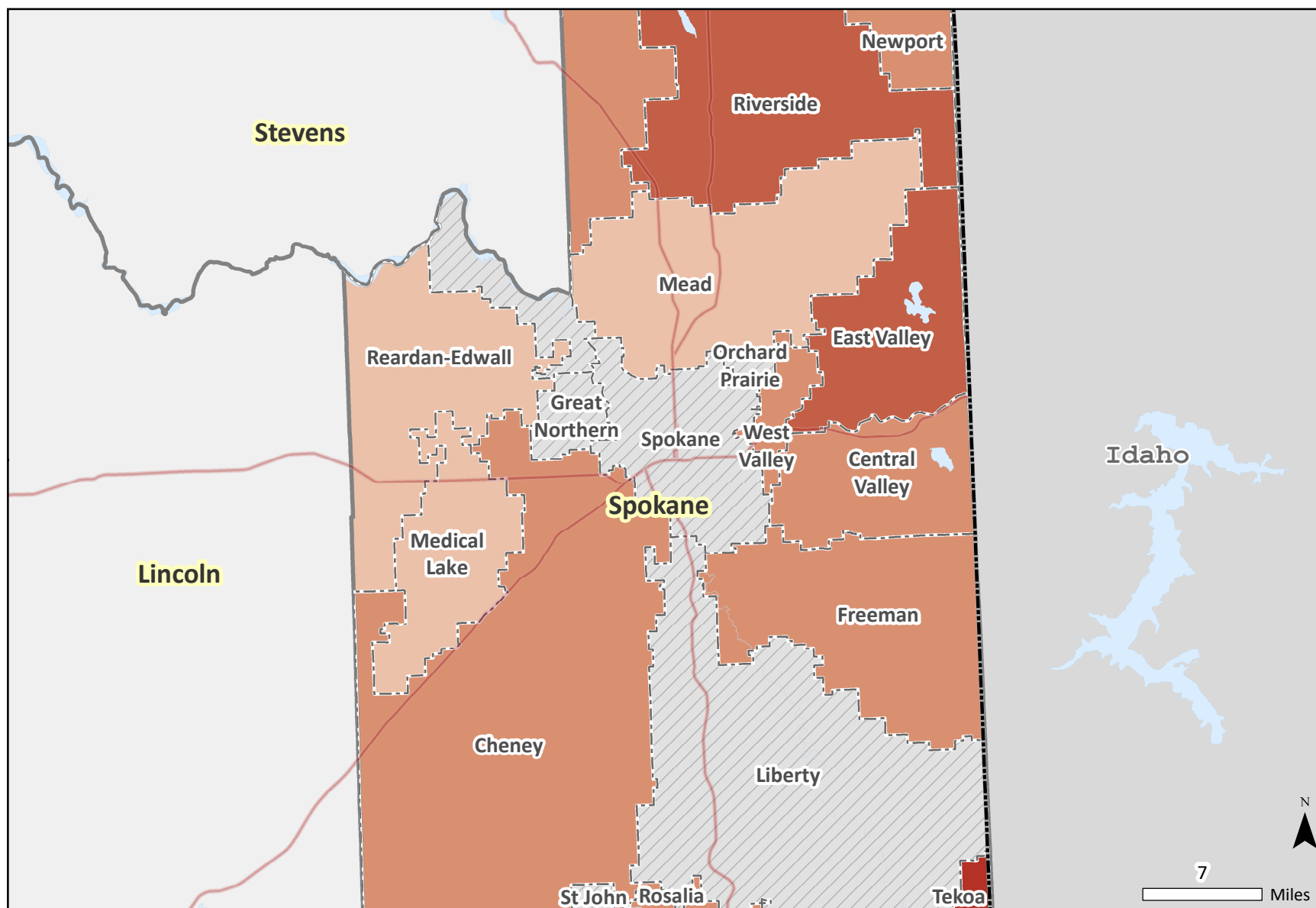


**DATA NOTES:** The percentile of the consumption risk scores. The consumption risk scores were calculated using standardized indicators in the alcohol, tobacco and other drugs (ATOD) consumption. Cartography: Irina Sharkova.

**SOURCE:** DSHS Research and Data Analysis, Community Outcome and Risk Evaluation Information System (CORE).

# Consequence Risk Ranking

by School District, Spokane County, 2018



**DATA NOTES:** The percentile of the consequence risk scores. The consequence risk scores were calculated using standardized indicators in three sub-domains: school performance, youth delinquency, and mental health. Cartography: Irina Sharkova.  
**SOURCE:** DSHS Research and Data Analysis, Community Outcome and Risk Evaluation Information System (CORE).

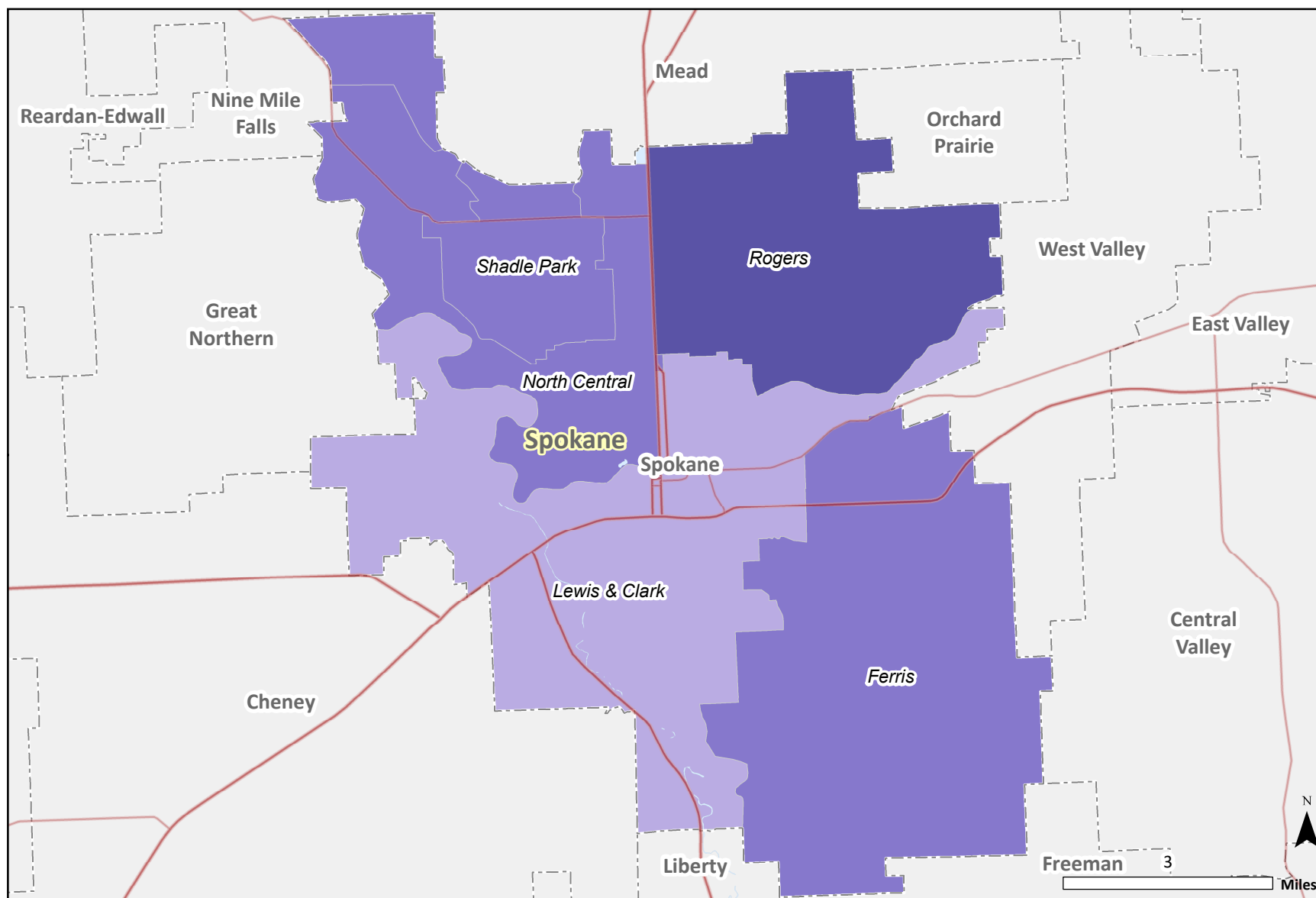
# Risk Profile by High School Attendance Area (2018):     Spokane

		Risk Ranking		Risk Category Rank		Contextual Indicators	
High School	Population: 10-17	ATOD Risk Percentile	Indicators with Data	Consumption (ATOD)	Consequence	Economic Deprivation	Troubled Family
Rogers H.S.	5,067	77	21	High	High	Very High	Very High
Shadle Park H.S.	3,434	73	13	High	Average	Average	No Data
North Central H.S.	3,742	69	21	High	Low	Very High	No Data
Ferris H.S.	4,502	44	21	Average	Average	Average	Very High
Lewis & Clark H.S.	4,978	19	13	Average	Very Low	Very High	Very High



# Marijuana Composite Ranking

by High School Attendance Area, Spokane School District, 2018



**Composite Risk Ranking**

High 75 - 89	Low 10 - 24	School Districts	Highways and Major Roads
Very High 90 - 97	Average 25 - 74	Counties	Water Bodies
	Very Low 5 - 9		

**DATA NOTES:** The percentile of the composite risk scores. The composite risk scores were calculated using standardized indicators in marijuana consumption and consequence. Cartography: Irina Sharkova.

**SOURCE:** DSHS Research and Data Analysis, Community Outcome and Risk Evaluation Information System (CORE).

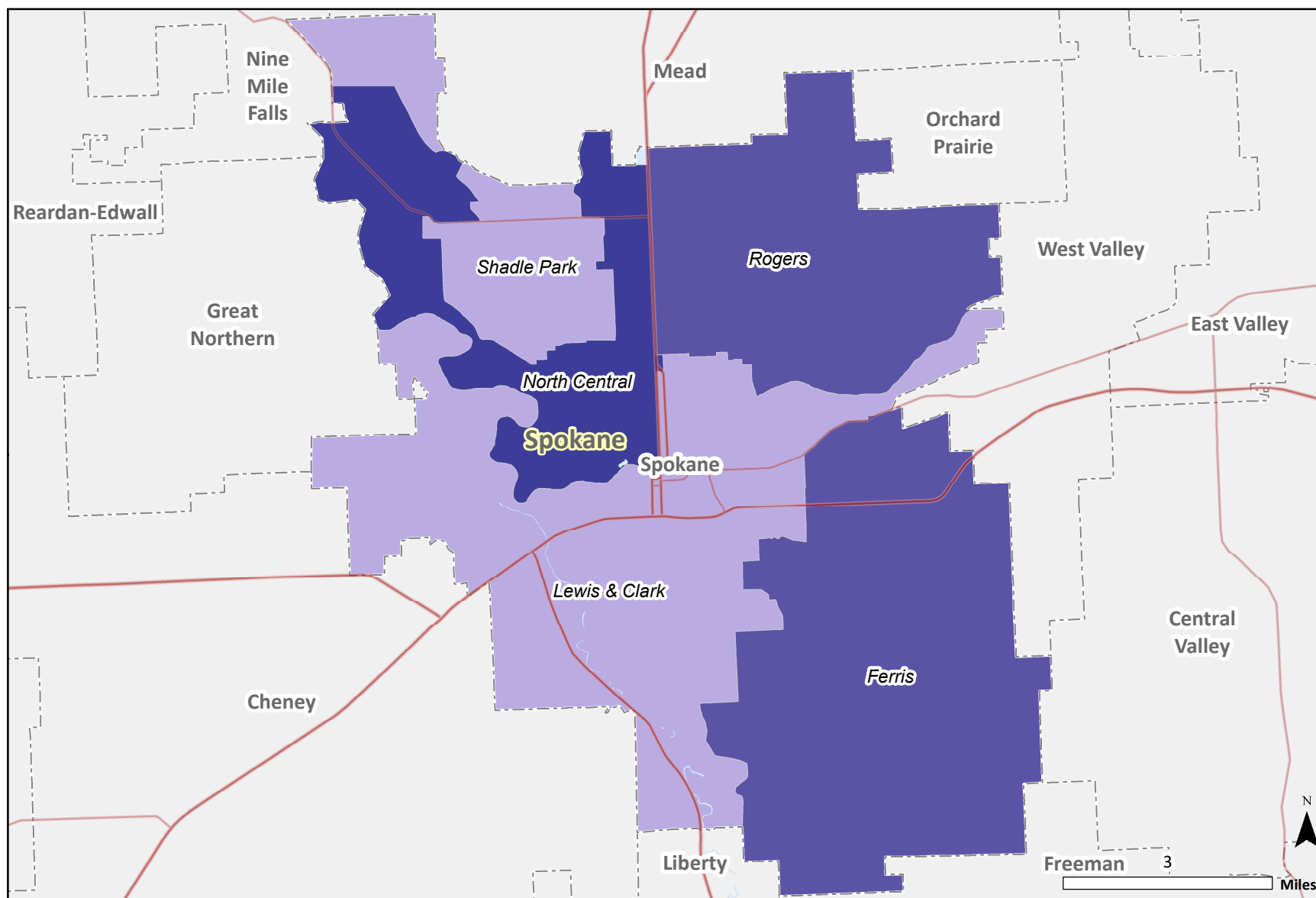


Transforming lives

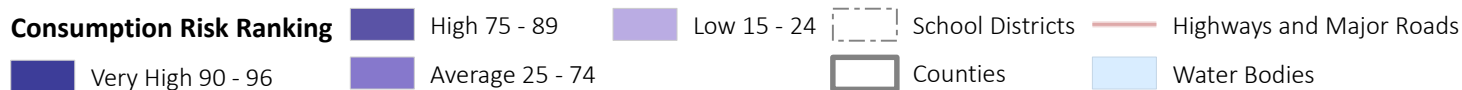
March 20, 2018

# Marijuana Consumption Ranking

by High School Attendance Area, Spokane School District, 2018



## Consumption Risk Ranking

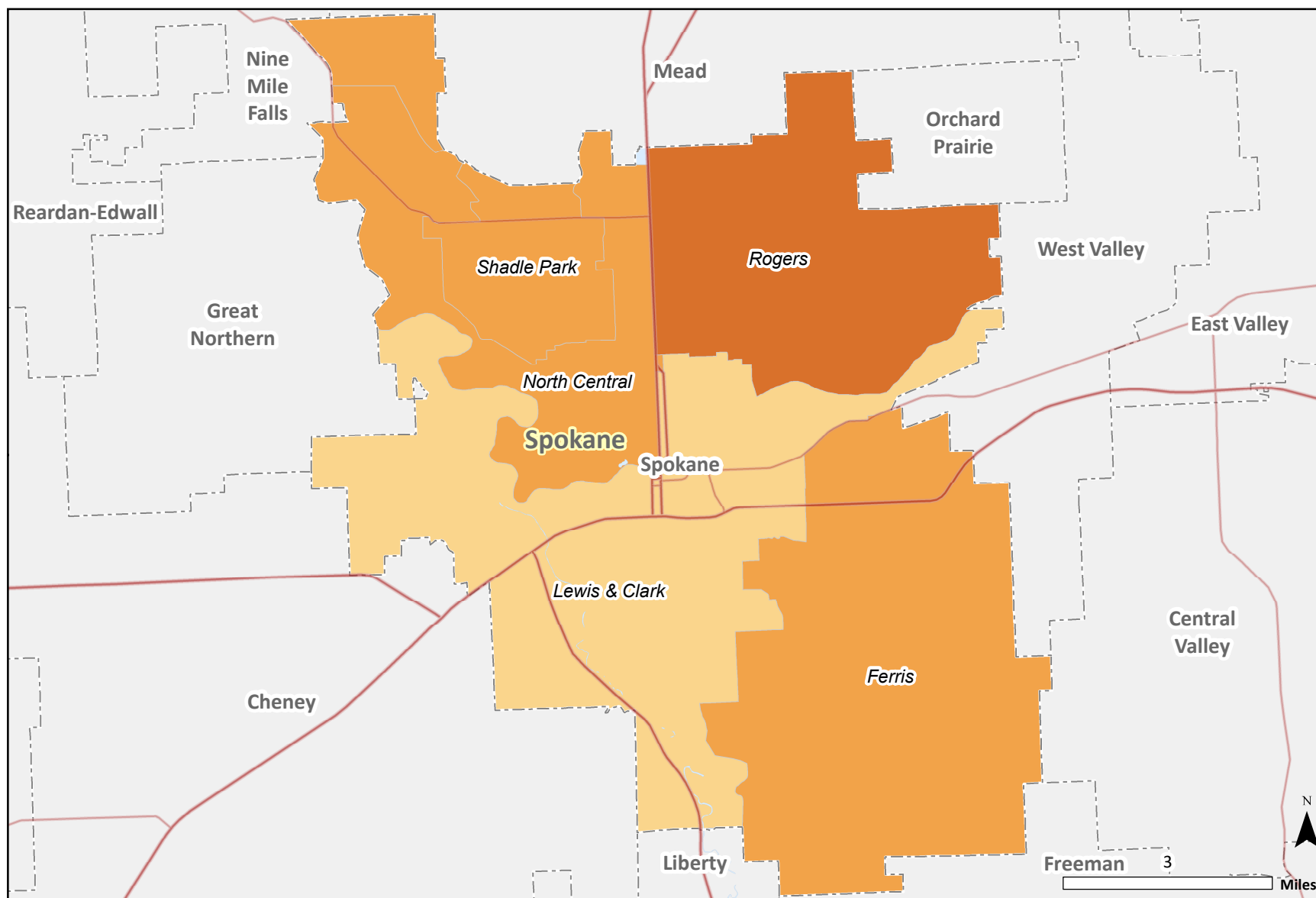


**DATA NOTES:** The percentile of the consumption risk scores. The consumption risk scores were calculated using standardized indicators in marijuana consumption. Cartography: Irina Sharkova.

**SOURCE:** DSHS Research and Data Analysis, Community Outcome and Risk Evaluation Information System (CORE).

# Alcohol, Tobacco and Other Drugs Composite Ranking

by High School Attendance Area, Spokane School District, 2018



**Composite Risk Ranking**

Very High 90 - 97	High 75 - 89	Average 25 - 74	Low 10 - 24	Very Low 7 - 9	School Districts	Highways and Major Roads
Counties	Water Bodies					

**DATA NOTES:** The percentile of the composite risk scores. The composite risk scores were calculated using standardized indicators in the alcohol, tobacco and other drugs (ATOD) consumption and consequence. Cartography: Irina Sharkova.

**SOURCE:** DSHS Research and Data Analysis, Community Outcome and Risk Evaluation Information System (CORE).

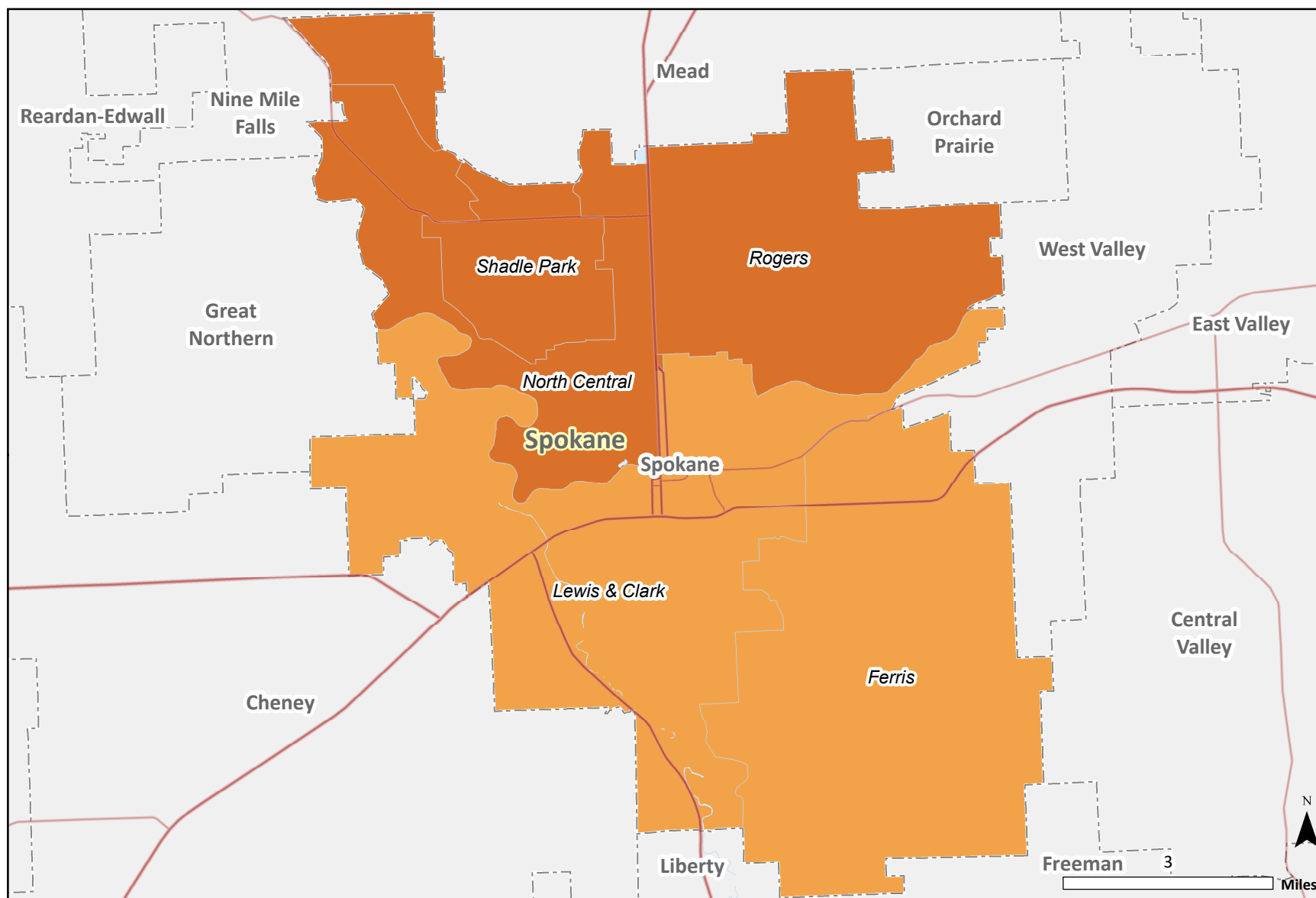


Transforming lives

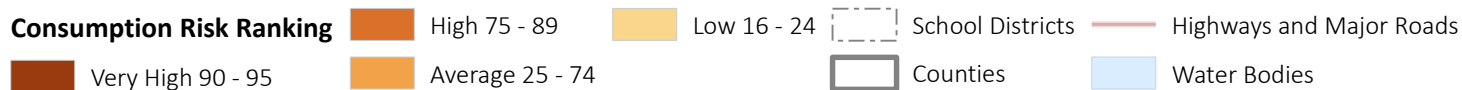
March 20, 2018

# Alcohol, Tobacco and Other Drugs Consumption Ranking

by High School Attendance Area, Spokane School District, 2018



## Consumption Risk Ranking

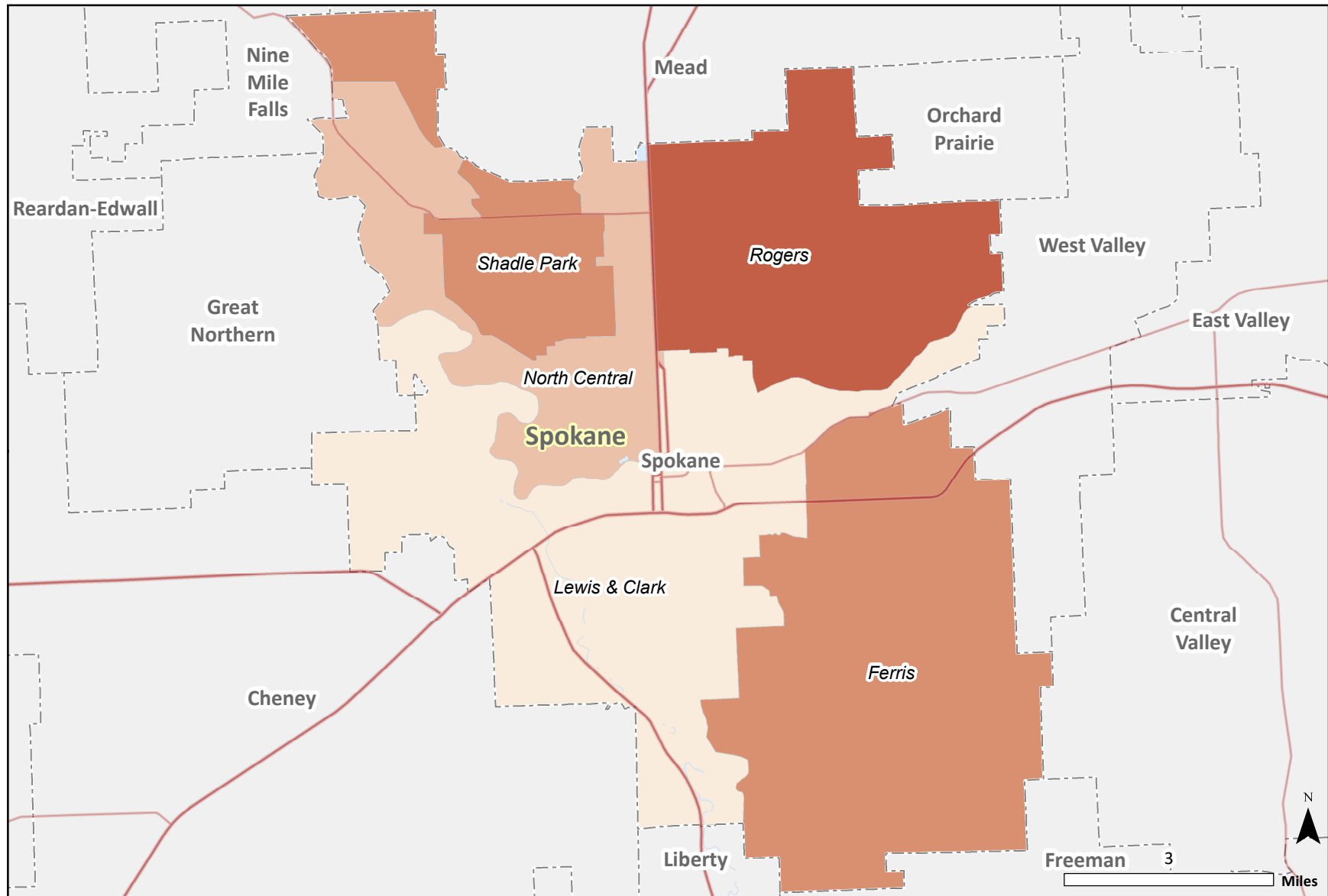


**DATA NOTES:** The percentile of the consumption risk scores. The consumption risk scores were calculated using standardized indicators in the alcohol, tobacco and other drugs (ATOD) consumption. Cartography: Irina Sharkova.

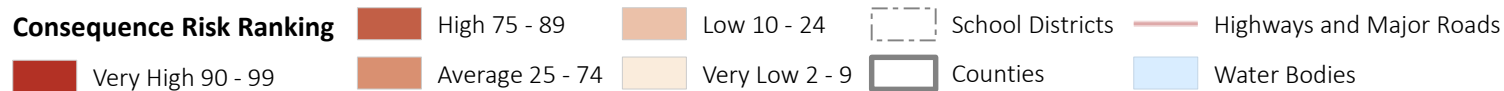
**SOURCE:** DSHS Research and Data Analysis, Community Outcome and Risk Evaluation Information System (CORE).

# Consequence Risk Ranking

by High School Attendance Area, Spokane School District, 2018



## Consequence Risk Ranking



**DATA NOTES:** The percentile of the consequence risk scores. The consequence risk scores were calculated using standardized indicators in three sub-domains: school performance, youth delinquency, and mental health. Cartography: Irina Sharkova.

**SOURCE:** DSHS Research and Data Analysis, Community Outcome and Risk Evaluation Information System (CORE).